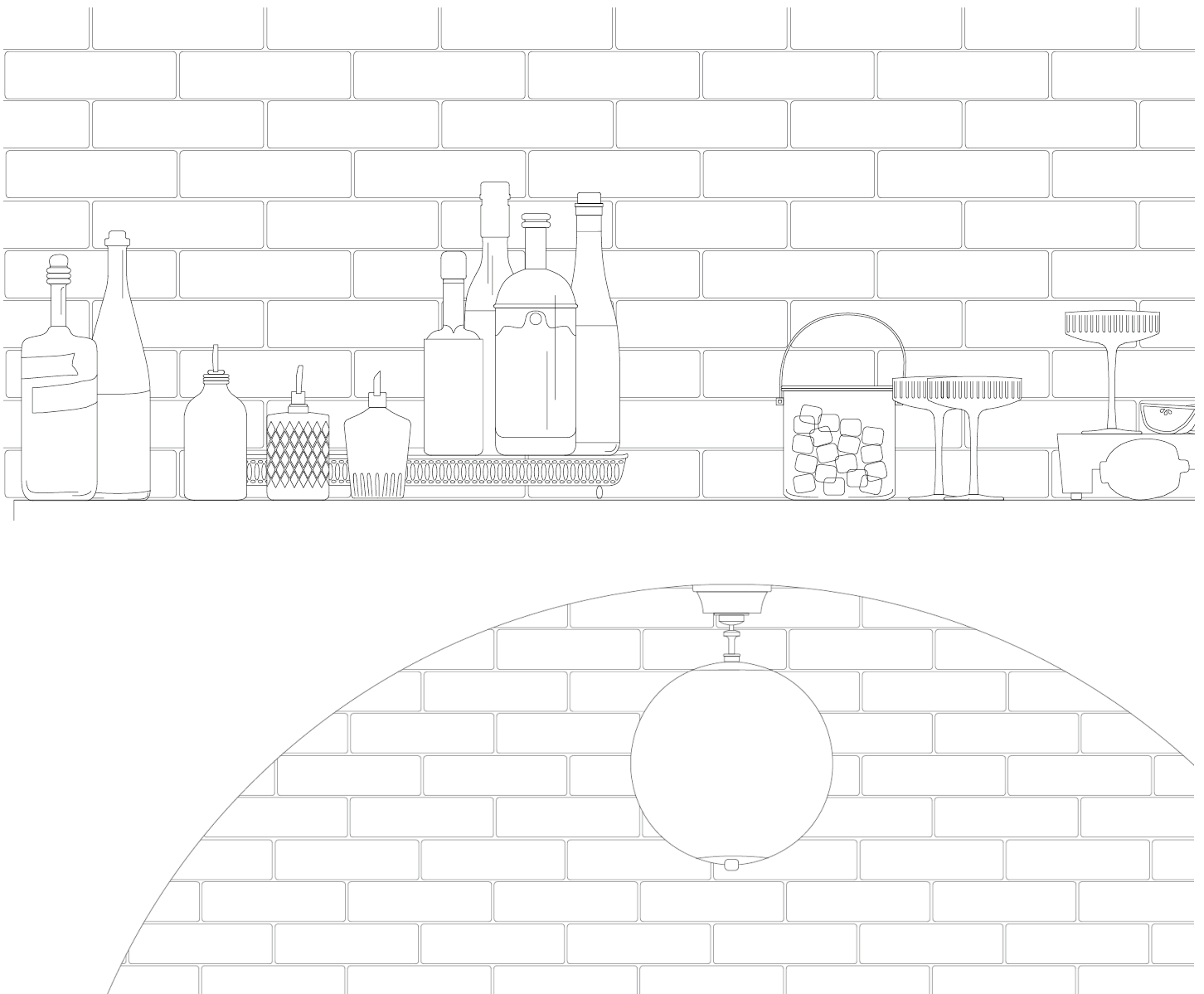
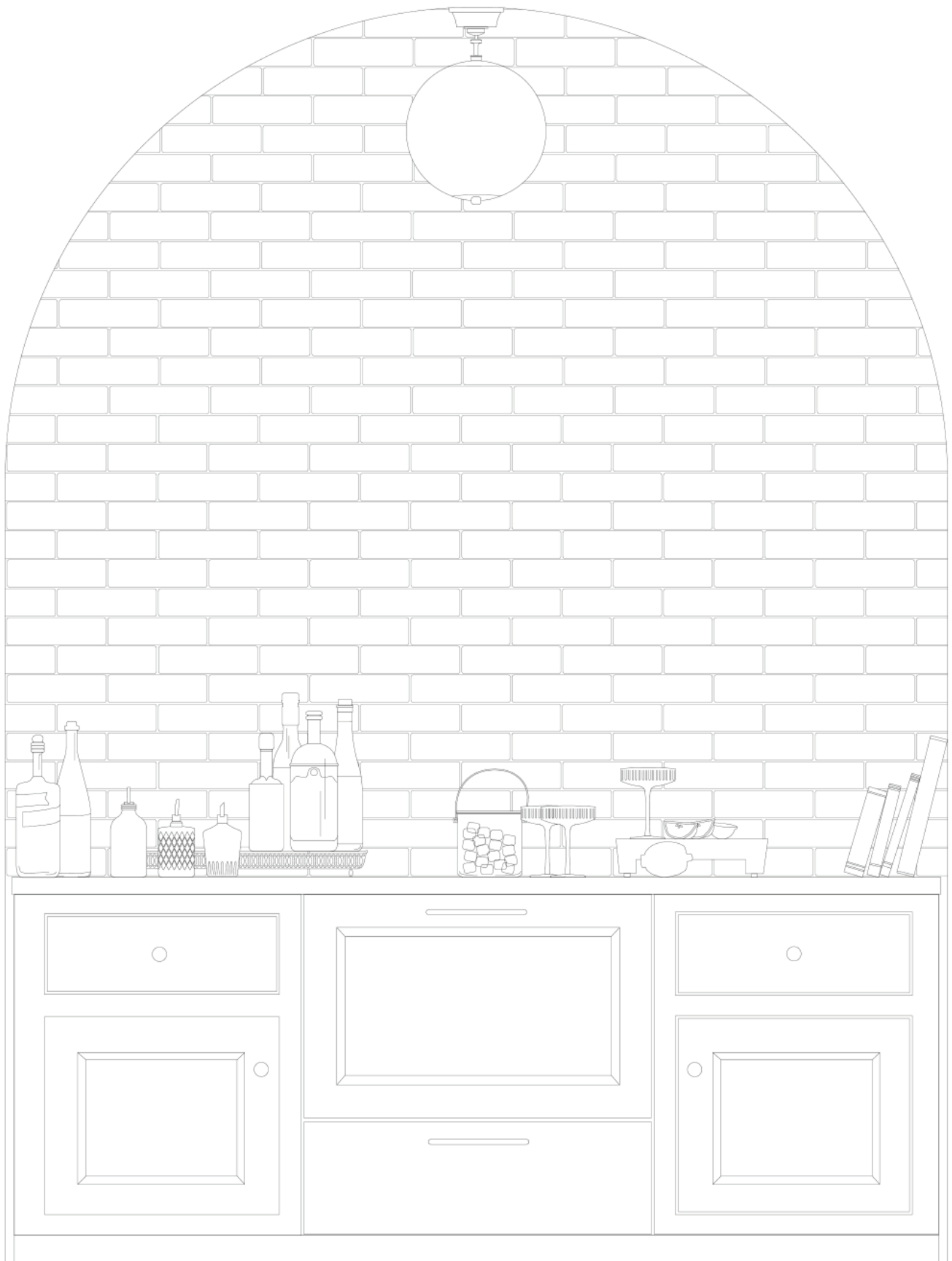


autocad.

While I came into this practice with a decent knowledge of the program, I took time to review from the beginning in case I had any skills I missed. Rather than draw a basic floor plan, which I have confidence in already, I wanted to practice my linework skills. Everything in here from the tile to each bottle is completely hand drawn, and there is more detail in these pieces than is honestly necessary.

- LinkedIn Learning AutoCAD 2023 Essential Training

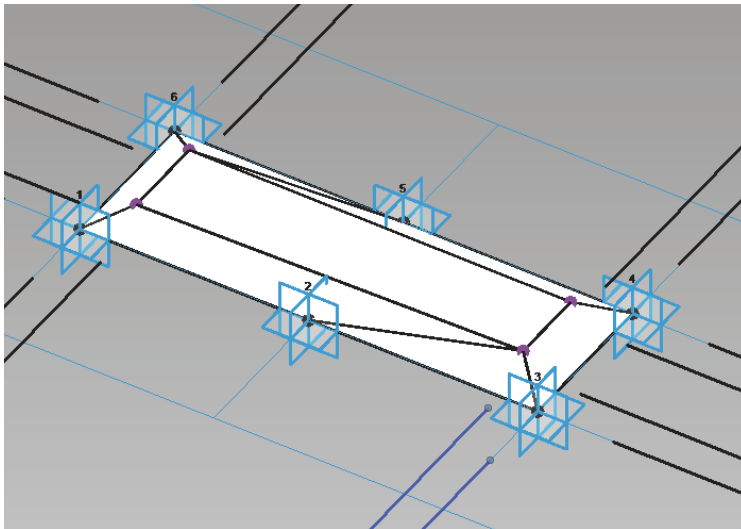




revit.

Revit has always been something that scares me a bit. With such a huge program and so many different aspects to it that are being forever updated, and every firm having their own standards, this one was a bit more like I was starting from the beginning. I always understood laying things out and a few of the more basic components, it was nice to dive back into the program from a long break to gain some confidence for my next internship.

- LinkedIn Learning Learning Revit 2023
- LinkedIn Learning Revit 2019 Professional Office Interior Design
- YouTube Realistic Subway Tile in Revit Tutorial

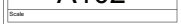


< I was even able to explore modeling my own tile in revit!

I acknowledge some of these components or sections may not be exactly correct as far as connections or wall materials, but this practice was more about getting into the program and reintroducing myself to the way it functions.



< The original image these designs were directly inspired by

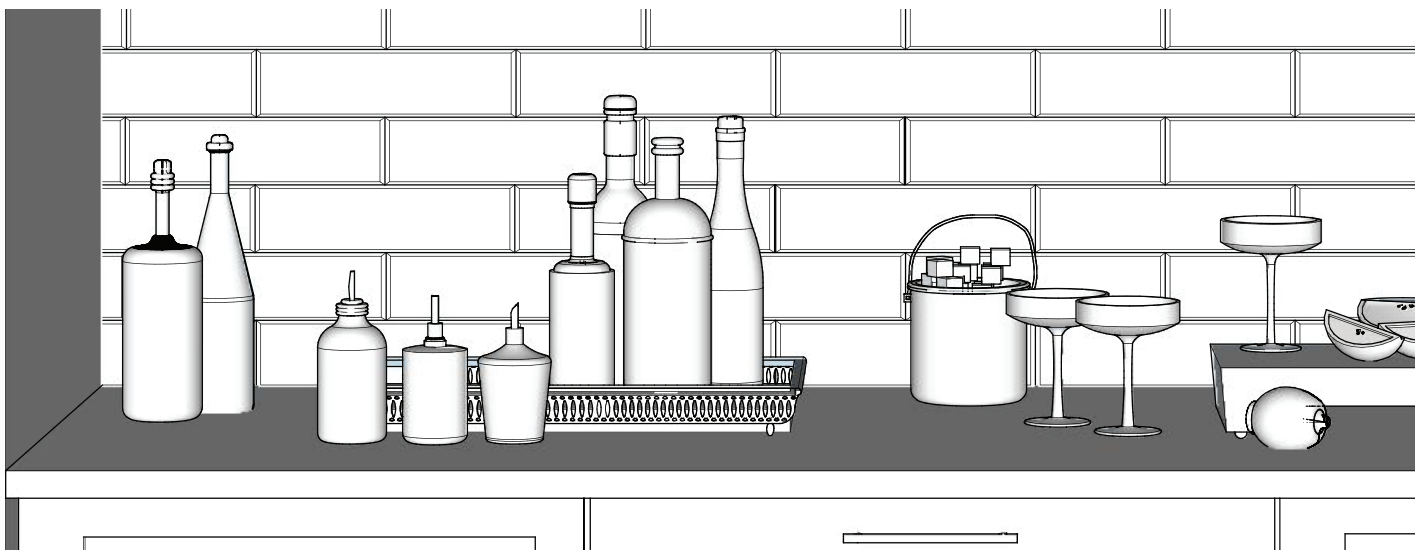
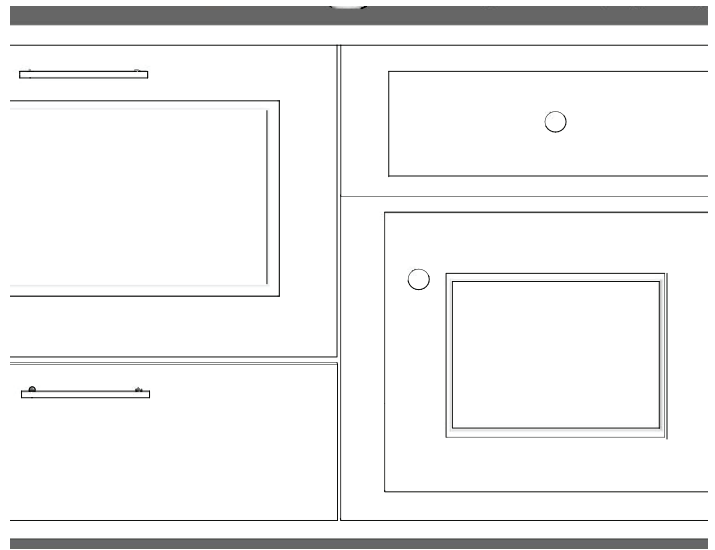
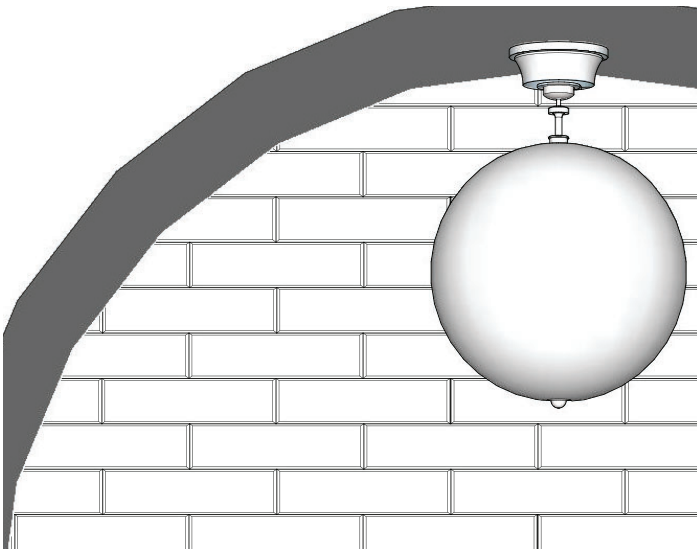


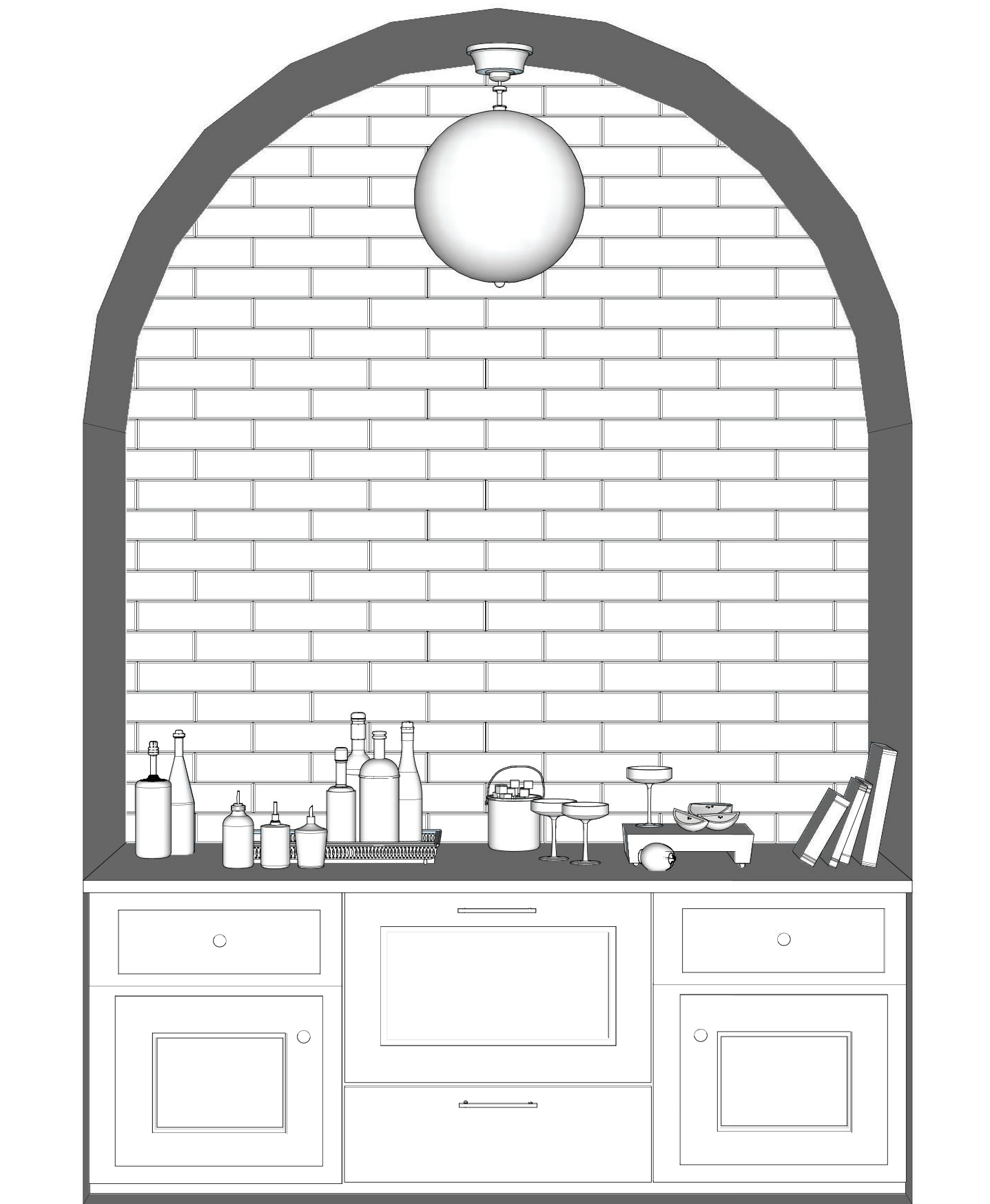
sketchup.

EVERY SINGLE PIECE OF THIS WAS HAND-MODELED BY ME!

From the tile to the bottles, this was my first ever introduction to SketchUp. Having been taught Rhino throughout my university, I chose to challenge myself to get familiar with a new 3D modeling program (and with great detail).

- LinkedIn Learning Sketchup 2021 Essential Training
- LinkedIn Learning Sketchup Pro: Interior Design Detailing
- YouTube How to Model a Bottle in Sketchup
- YouTube SketchUp Layout – How to Use LayOut for SketchUp Pro



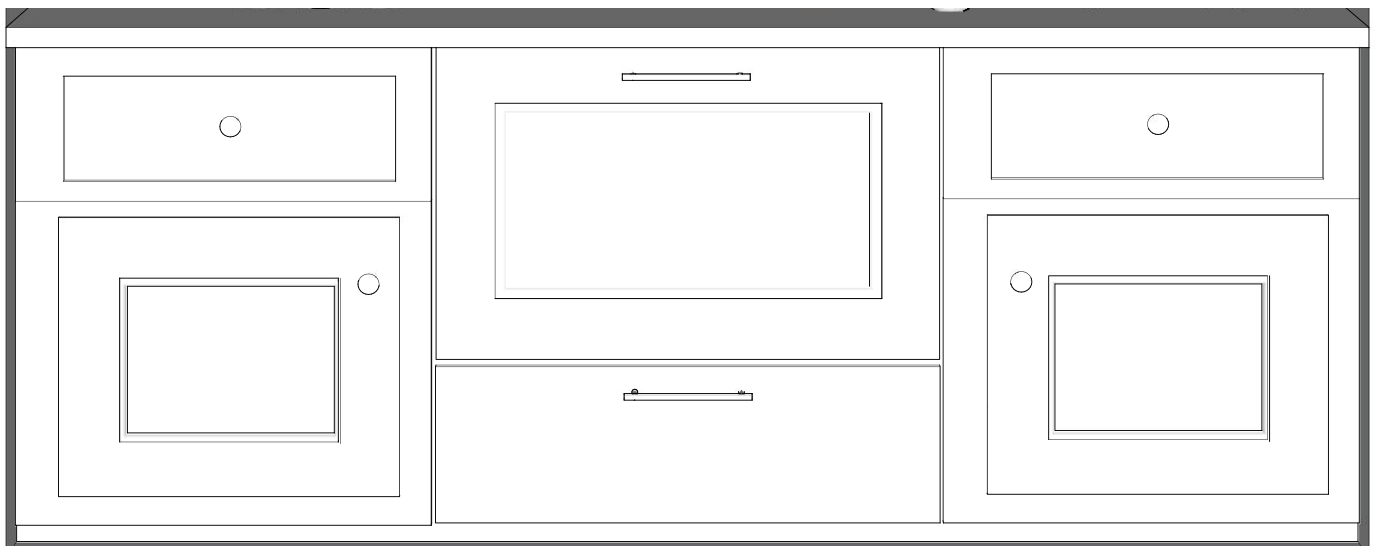
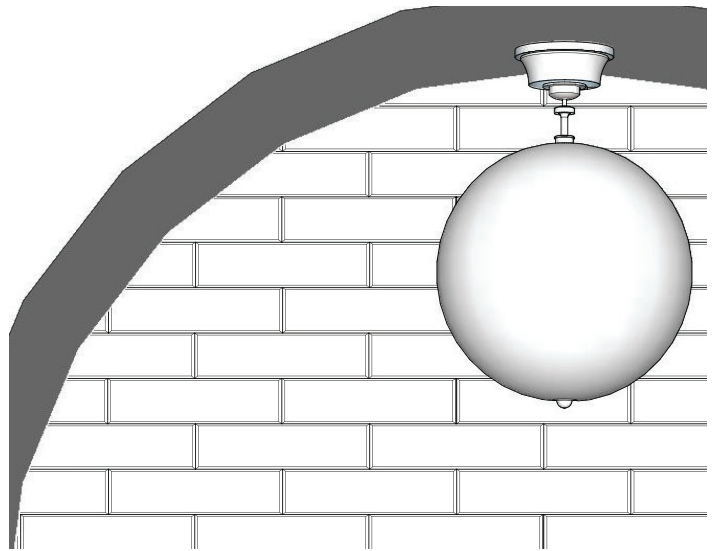


sketchup.

next opportunity for learning -

custom millwork and **lighting documents** coming soon!

I have done work like this for firms in the past, but am able to learn a new skill on my own.



photoshop.

millwork vaneer

having a lighter, warmer natural wood in the space adds to the fresh feeling, while also enhancing the feminine and biophilic touches

drawer handles

using black metal slabs on the millwork adds a contemporary feeling to the space, and breaks up the feminine touches that may overwhelm the space

countertop slab

adding a white slab to the space brings a more airy feeling to the space, helping the light reflect and brighten up the visual of the space

interior arch paint

rather than adding more texture to the interior of the arch, using the same color in paint to create a transition

1/2 step tile backsplash

bringing color into the space with a less saturated green tone will enhance a fresh feel of a space

exterior arch paint

to create a more open space, a lighter paint with a warm undertone will also create a more welcoming feeling





photoshop.

millwork vaneer

using a deep, warm wood tone helps communicate comfort within the masculine tones, as well as move the eye up to the star of the show - the tiles

drawer handles

continuing with the same black metal drawer handles as the other palette, this compliments the dark tones throughout the space, while not distracting from the wood itself.

interior arch plaster

adding more texture to the smooth and sharp tones of the space while complimenting the navy color creates a smoother transition between paint and tile

combination tile backsplash

these two slabs together offer more texture and depth to the space, as well as create a transition to the charcoal slab

countertop slab

to keep up with the moody tone of the palette, the charcoal slab also adds to the masculine feel of the space

exterior arch paint

while continue the warm, masculine feel of the space, this paint also brings a lighter transition



by changing only 3 elements
and some accessories, the same
space is able to communicate a
completely different mood

