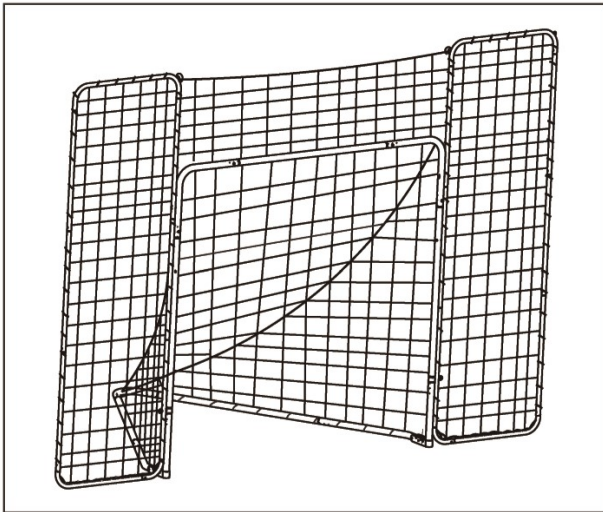




#15

#87616



## BACKSTOP KIT FOR 6'x6' GOAL

| NO. | Sketch | Description           | Part#        | Qty |
|-----|--------|-----------------------|--------------|-----|
| 1   |        | Outside Bottom U Tube | 3096252001   | 2   |
| 2   |        | Top U Tube            | 3096251002   | 2   |
| 3   |        | Lower Inside Upright  | 3096252003   | 2   |
| 4   |        | Upper Inside Upright  | 3096252004   | 2   |
| 5   |        | Middle Inside Upright | 3096251005   | 2   |
| 6   |        | Outside Upright       | 3096251006   | 6   |
| 7   |        | Bolts 8mm x 3"        | B875         | 4   |
| 8   |        | Eye Bolts 8mmx30mm    | E830         | 2   |
| 9   |        | Butterfly Nuts 8mm    | N80          | 5   |
| 10  |        | 15' Rope Black        | 9142         | 6   |
| 11  |        | 5' Rope Black         | 9143         | 2   |
| 12  |        | 15" Rope Black        | 9144         | 6   |
| 13  |        | Side Backstop Net     | 8189         | 2   |
| 14  |        | Top Backstop Net      | 8188 or 9176 | 1   |
| 15  |        | Black Bungees 5"      | 9153         | 6   |
| 16  |        | Bolts 6mm x 3"        | 8014         | 4   |
| 17  |        | Eye Bolts 6mmx30mm    | 8016         | 2   |
| 18  |        | Butterfly Nuts        | 8015         | 5   |

**Installation  
Instructions**  
Please read instructions  
**COMPLETELY**  
before assembly.



**DO NOT  
RETURN  
PRODUCT TO  
THE STORE**

**Missing Parts,  
Need Replacements, or  
Help With Assembly**

Please EMAIL or Call  
Customer Service  
for Assistance  
Service@ezgoal.net  
203 591 9032



## Ezgoal 6x6 Backstop Kit

**Note:** Precision connection will fit snugly, use a rubber mallet or block of wood if needed. Please look at the front of the color box for pictures also.

### Figure 1 Assemble side panels

according to the diagram. Note: The corner loops on each panel should face each other and the down tube loops face back.

### Figure 2 Side panel Assembly Lacing

Secure the 4 corners of the net, so it is easy to lace. The labels should be on top, The lacing should be snug. Start at the bottom in the middle of the wiggle wire. Use the 15' black ropes. see details.

- 1) B Corners, lace every square box.
  - 2) C Side and top, lace every other square box.
  - 3) D Bottom, Lace every square box.
- Tie off with good Knots.

### Figure 3 & 3A Attaching side Panels to frame

There are 2 ways to connect the side panels to the goal. It can be bungeed or bolted to the goal.

### Figure 3 bolting the side panels

If you have an Ezgoal Lacrosse net, the holes are predrilled to secure the side panels.

**If assembling to the Ezgoal 87615 and 87514 goals,** use (2) 3 "Screws and the 2 butterfly Nuts on the top two holes.

Eye bolts on the bottom two-holes.

Figure (E) & (I). Use the 6mm OR 8mm bolts and eye bolts depending on the year of the goal.

There will be extra parts after the backstops is completed.

### Figure 3A Bungee connection or bolt to connection the goal to backstop

If you do not have an Ezgoal goal, use 3 bungees, space evenly, see Figure(3A) & (5) on each side to secure the backstop to the goal. When using bungees, the bungee balls must be on the back side of the goal.

**If you do not have holes on the goal.** Stand the side panels along side of the goal.

Drill 4 - 1/4" holes on the side of the goal to match the backstop holes.

Attach them to the frame using the (4) 3" bolts and butterfly nuts.

The bottom hole tube on the side panels adjusts up and down if needed to match the goal holes.

Detail (I) You can also just bungee the backstops to the goal.

Note: The head of the bolt should be on the inside of the goal.

### Figure 4 backstop top net connection

The thick black rope and label must be on top. (Detail F.)

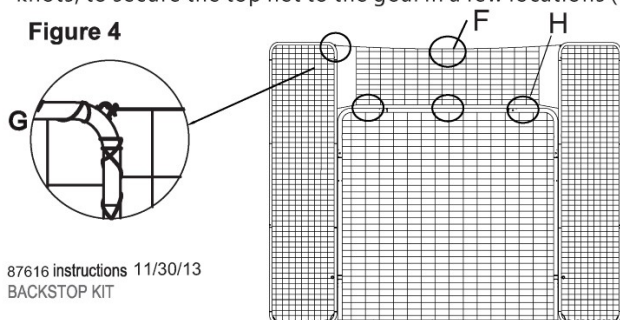
Using thin short rope corner ties, attach the top net to the 4 corner steel loops.

Secure the heavy main rope on one panel to the steel loop, pull tight and secure the main rope to the opposite side panel. See (Detail G.) and the front of the color box.

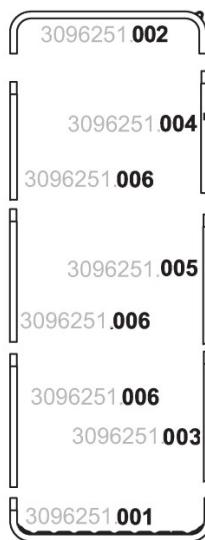
Repeat for the bottom rope. Use the 5'ropes to the lace the top net to the side panels. See detail (G) and

Figure 4. Use the 15" rope, Tie bow knots, to secure the top net to the goal in a few locations (Detail H.)

**Figure 4**



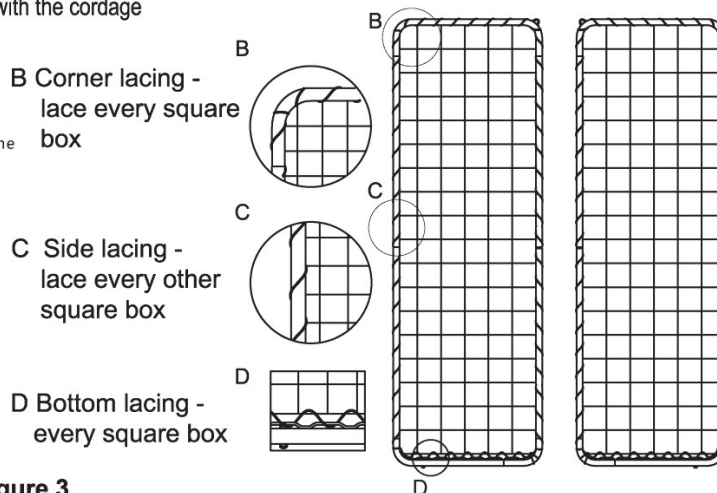
**Figure 1**



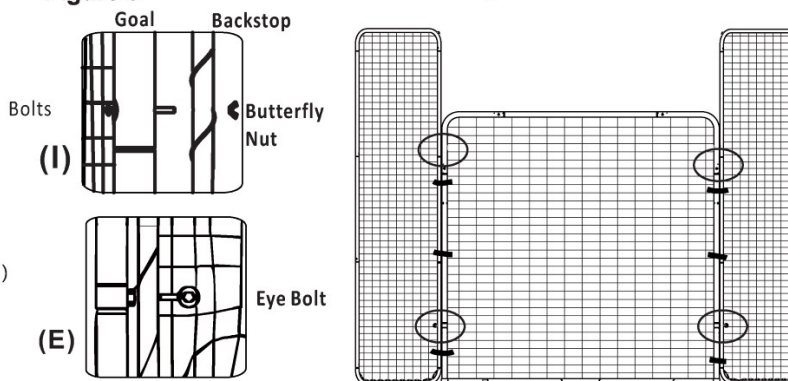
**Model #87616**



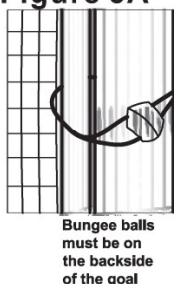
**Figure 2** Fasten tight every other square with the cordage



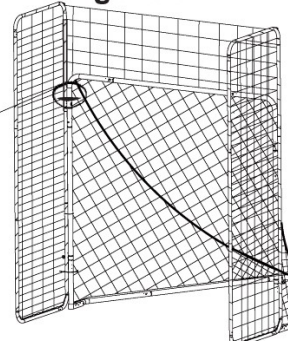
**Figure 3**



**Figure 3A**



**Figure 5**





## Ezgoal 6x6 Backstop Kit

# FOR #86321

Figure 6 86321 backstop top nets

Net assembly 86321 throwback.

Follow directions on Page 2 section 1&2 for assembling & lacing the side nets.

The black thicker rope and labels must be facing up.  
Connect the top net to the bottom of the throwback. The net will be a little wide so as you lace the net, bunch up the extra net and wrap the black rope around it. Put the extra net on the back side of the throwback when lacing so it is not noticeable from the front.

Figure 6A bungee connection

Use 3 bungees space evenly see Figure 7 on each side to secure the back stop to the goal. When using bungees, the bungee balls must be on the back side of the goal so they are not being hit by the lacrosse balls.

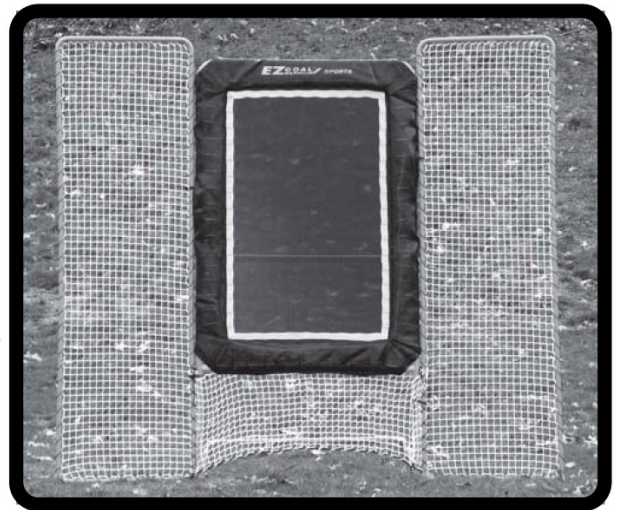


Figure 6

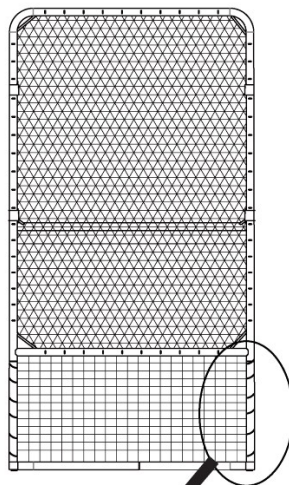
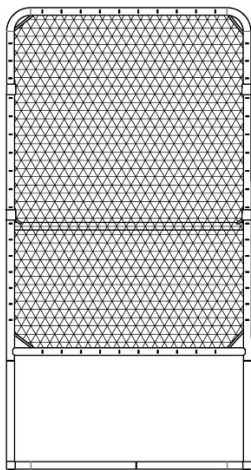
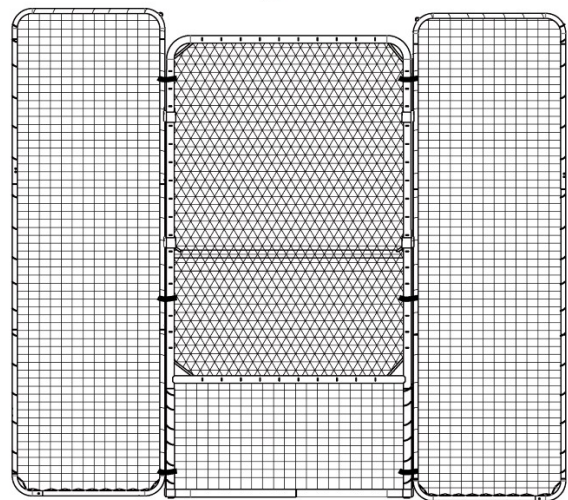


Figure 7

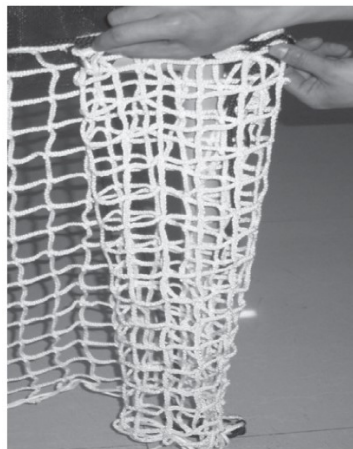


See below .

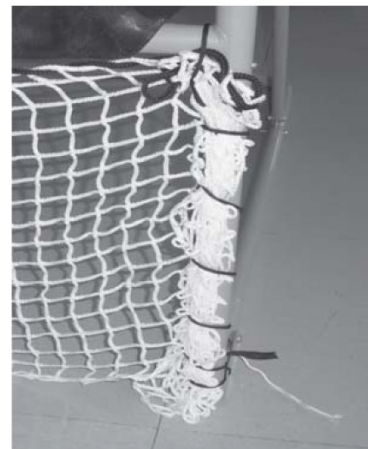
Put the extra net on the back side of the throwback



1



2



3



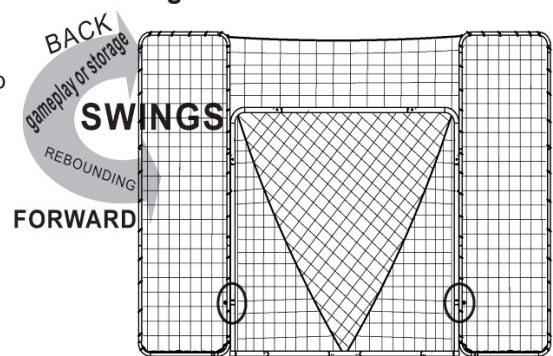
## Folding and storing:

**Note:** This Backstop is designed to fold up in front of goal. To do this you need to find the button on the bottom back of the side uprights of the Ezgoal goal. Press the button in. This will enable the ring on the goal to rotate to the front of the goal with the backstop. This will make it so you can swing the backstop in front of the lacrosse goal for storing.

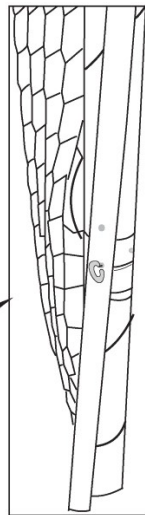
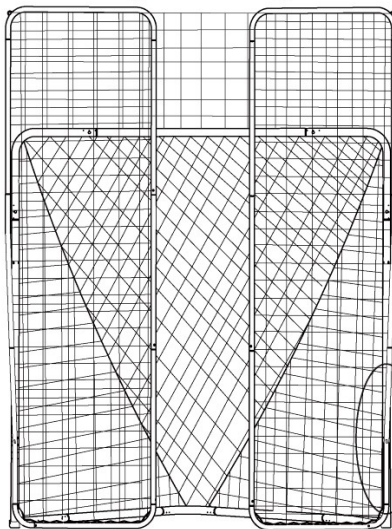
**Note:** For a none Ezgoal goal that is bolted , you will need to take the backstop off for storage.

See figure 8 (1) (2) (3).

Figure 8



Ezgoal Storage



Patent Pending

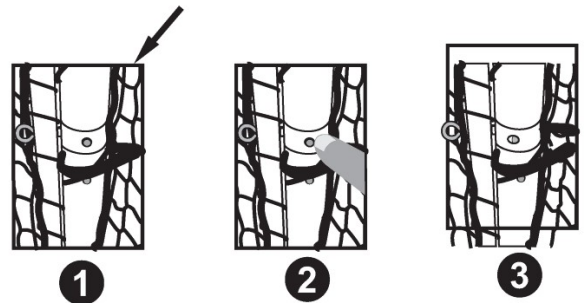
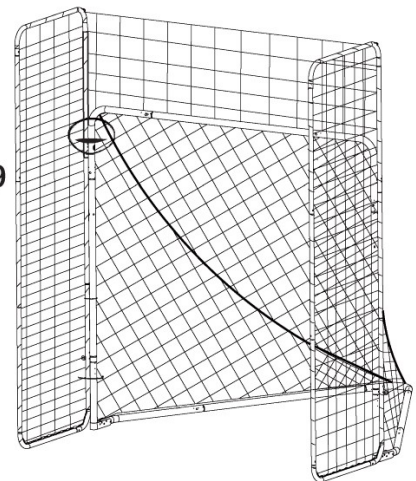


Figure 9



**Figure 9 .** Fold panels forward, this will help stabilize the unit in windy conditions. Note: never leave the unit unattended within 10' from vehicles, boats, homes, or any structure which may incur damage from the backstop or cause damage to the backstop.

## To Order the Backstop Rebounder Visit [ezgoal.net](http://ezgoal.net) **CUSTOMER ASSISTANCE**

For help, replacement parts, questions or concerns about your EZ Goal Products, EMAIL or Call

**EZ Goal Sports**  
Customer Service:  
WATERBURY, CT 06710, U.S.A.

**Service@Ezgoal.net** or 203 591 9032

## **SAFETY PRECAUTIONS**



### **WARNING**

- Manufacturer suggests wearing safety goggles for net assembly, to protect against bungee cords hitting eye.
- As with any play equipment, children **MUST** be supervised at all times.
- Use product on a level surface.
- Never use near steps or stairs.
- For outdoor use only.
- Allow 8 feet from structures such as a fence, garage, house, overhanging branches, laundry lines, or electrical wires.
- Use common sense, and all the same precautions as you would when playing sports.
- Secure unit, so high winds do not blow it over.



### **WARNING**

- **NEVER** allow anyone (people or pets) to stand behind the net or in any possible path of a ball or puck should you miss the net or should the ball or puck go through the net.
- Inspect unit before and during each use. Replace any worn or damaged parts.
- Never allow children to stand on unit. This could cause damage to unit and result in an injury.
- Do not use bungees for any other purposes other than to apply net.
- As with any sporting activity, always wear the recommended safety equipment.
- Never leave children unattended.
- Use protective eyewear when securing bungees.