

# EZ-TAILGATE FOLDING TABLE

**EZTRUNK™**

**ASSEMBLY**

## **MANUAL**

**#1918 2044A   #1918 2055A   #1918 2066A**

### **MAKE IT EZ**

**Print the latest manual &  
Watch the EZTRUNK Video**



**Scan QR CODE for Video &  
PDF MANUALS**

## **Customer Service**

*Any question? WE ARE HERE TO HELP!*

**Text or Call 203-901-0055 / Call 203-591-9060**



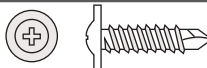




**EMAIL US: SERVICE@EZTRUNK.NET**

*7 days a week 8:30 am EST*

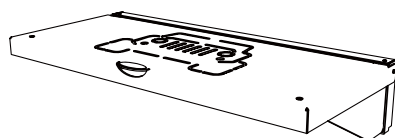
## **WE CAN HELP YOU!**

**PO# :**

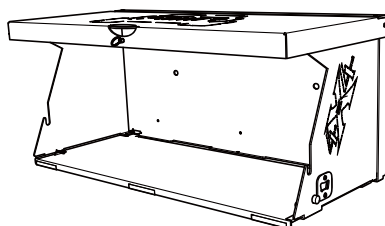
**Please read instructions fully before beginning assembly**

NO	Illustration	Description	Part #	QTY.		
<b>JK EZ-Tailgate Table Hardware List</b>				#1918 2066A #1918 2044A #1918 2055A		
1		EZ-Tailgate Folding Table		1	1	1
2		Rubber Pad Insulator This is for Noise Suppression if needed	21203	6	8	8
3		Self-drilling Screw 4x15	14150	3 +2 extra	6 +2 extra	6 +2 extra
4		Self-drilling Screw 4x30	14300	4 +2 extra	\	\
5		Spring Pin	24811	\	2 +1 extra	4 +2 extra
6		Screw Driver Bit #2	0202	1	1	1
7	 Alcohol	Alcohol Wipes	10075	4	4	4

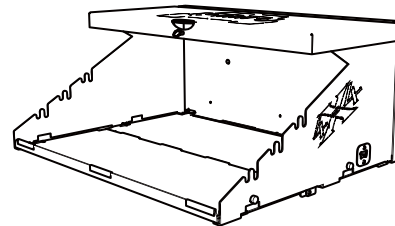
#1918 2044A #1918 2055A #1918 2066A



#1918 2044A  
Single Level



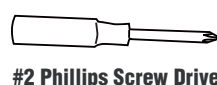
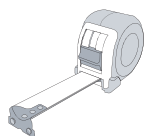
#1918 2055A  
Deluxe Double



#1918 2066A  
Extreme Double

**MAX Loaded Weight 20 Pounds**  
**JL EZ-Tailgate Table Hardware List on Page 5**

## RECOMMENDED TOOLS

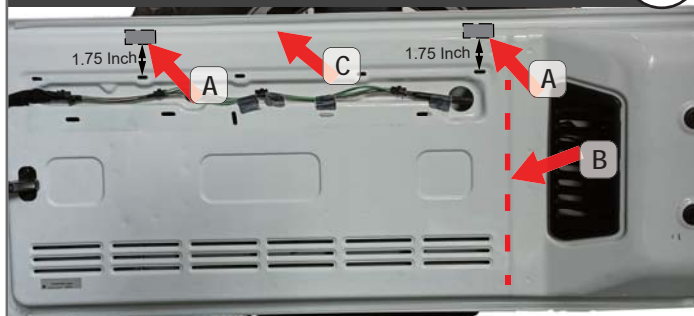


## JK EZ-Tailgate Table Install Instructions 1



Open the vehicle's tailgate. Remove the Plastic cover on the rear tailgate by pulling bottom plastic out first, (GRAB THE BOTTOM EDGE ) The clips will come lose. Do Not pull from the top. The top clips will release when the Inside bottom clips release when pulling out then down.

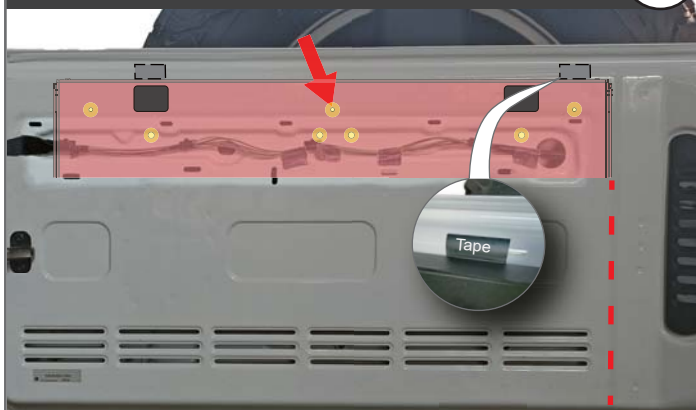
## JK EZ-Tailgate Table Install Instructions 2



Align the EZ-Tailgate Table to the vehicle's tailgate.

The Tailgate Table should be 1.75" above the oval hole Location A. Put tape there to make it EZ. It needs to be below the round edge C on top. The right side of the table should be next to the bend on the right side B. When setting the Tailgate Table in place, make sure the UPPER right hole on the on the back of the Tailgate Table is not where the open slot is on the back door. The 6 holes on the Tailgate Table should be in a solid areas of the tailgate.

## JK EZ-Table Install Holes Layout 3



Single Level table install holes The right side of the table should be next to the bend on the right side B. When setting the Tailgate table in place, make sure the UPPER right hole on the on the back of the Tailgate Table is not where the open slot is on the back door. The 7 holes on the Tailgate Table should be in a solid areas of the tailgate.

## JK EZ-Table Install Holes Layout 4

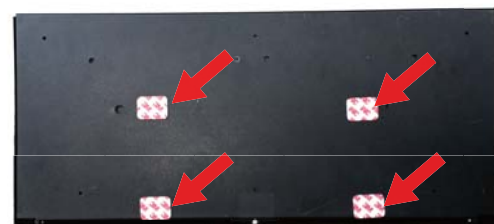


Deluxe double and Extreme Double table install holes. The right side of the table should be next to the bend on the right side B. When setting the Tailgate table in place, make sure the UPPER right hole on the on the back of the Tailgate Table is not where the open slot is on the back door. The 6 holes on the Tailgate Table should be in a solid areas of the tailgate.

## Single Level Table



## Deluxe Double & Extreme Double Table

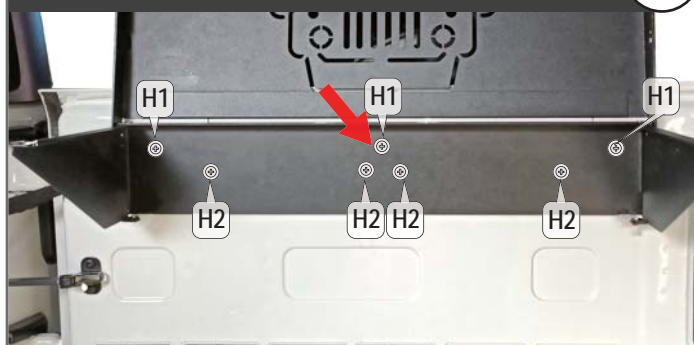


Use alcohol wipes to clean the area on the tailgate where the double tape goes. The Tape is used to help in the assembly to make it easier.

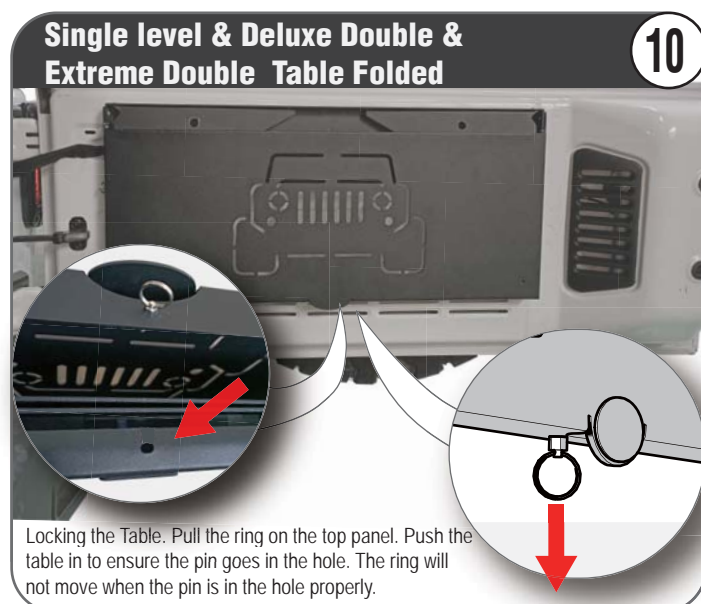
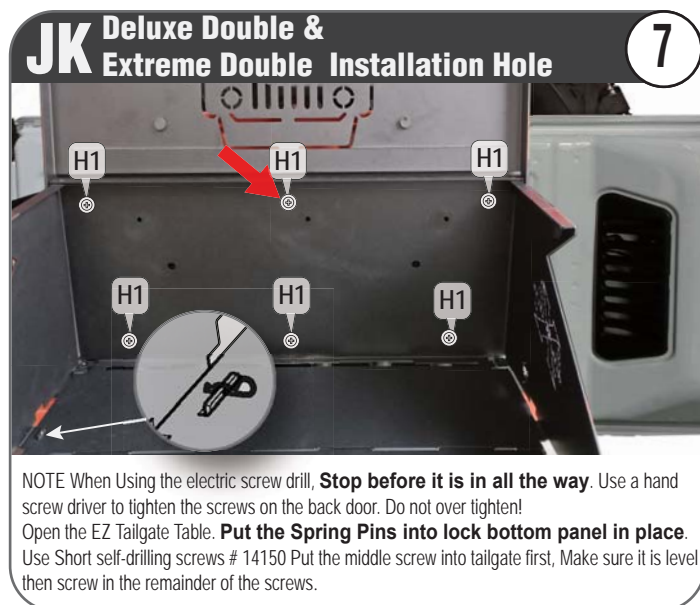
Always hold the Tailgate Table until you have a least 2 screws in the tailgate.

Remove the protective cover from the adhesive tape Carefully align the table and stick EZ-Tailgate Table to vehicle's tailgate.

## JK EZ Table Install Holes Layout 6



NOTE: When Using the electric screw drill, STOP before it is in all the way. Use a hand screw driver to tighten the screws on the back door. **DO NOT OVER TIGHTEN!** Open the EZ Tailgate Table. Put the middle screw into tailgate first, Make sure it is level then Screw into the remainder of the holes Put the Spring Pins into lock bottom panel in place. Use Short self-drilling screws # 14150 to holes H1, Long self-drilling screws #14250 to holes H2. Put the middle screw into tailgate first, Make sure it is level then screw in the remainder of the screws.



# Customer Service




*Any question? WE ARE HERE TO HELP!*

Text or Call **203-901-0055 / Call 203-591-9060**  
**EMAIL US: SERVICE@EZTRUNK.NET**

*7 days a week 8:30 am EST*

## WE CAN HELP YOU!

**Please read instructions fully before beginning assembly**

NO	Illustration	Description	Part #	QTY.		
<div>JL EZ-Tailgate Table Hardware List</div> <div>#1918 2044A#1918 2055A#1918 2066A</div>						
1		Round Head Bolt M6x30	06300	3	3	3
2		Black Metal Washer	1806012	3 +1 extra	3 +1 extra	3 +1 extra
3		Allen wrench #4	60407	1	1	1

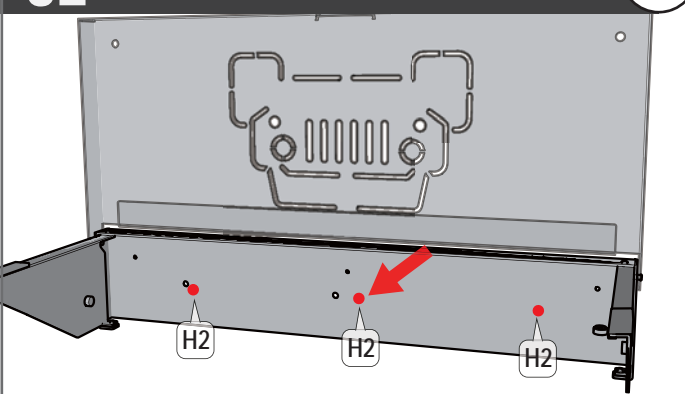
#1918 2044A #1918 2055A #1918 2066A

### JL EZ-Tailgate Table Installation 1



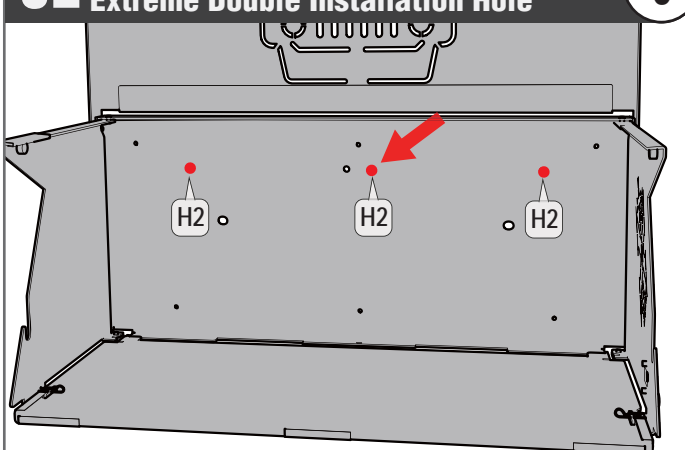
Open your tailgate and remove the plastic panel by gently and evenly pulling at the body clips. Put a piece of paper or tape on the tool so you do not make any marks when taking the panel off.

### JL Single Level Installation Hole 2




Use Bolts #06300 and Washers #1806012 to install EZ-Tailgate Folding Table into holes H2 on vehicle. (See figure)

### JL Deluxe Double & Extreme Double Installation Hole 3




Use Bolts #06300 and Washers #1806012 to install EZ Tailgate Folding Table into holes H2 on vehicle. (See figure)

### Single Level Table 4

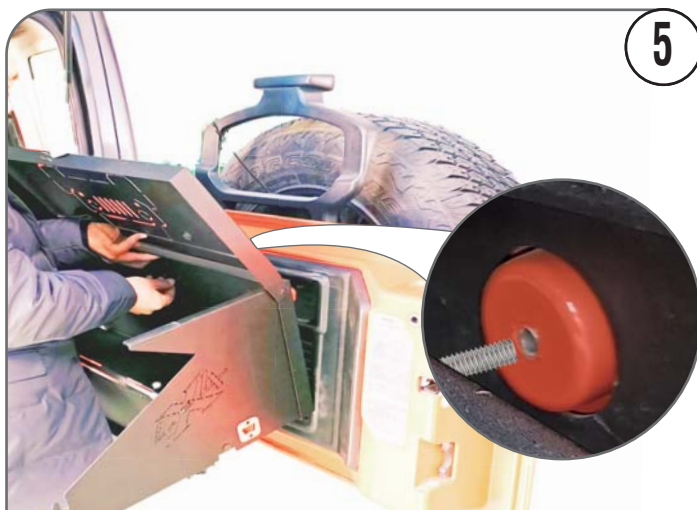


### Deluxe Double & Extreme Double Table



This pads are for Noise Suppression between Table and door. Clean the back Door with the alcohol wipes before peeling of the tape. **The tape is there for Noise Suppression only.**





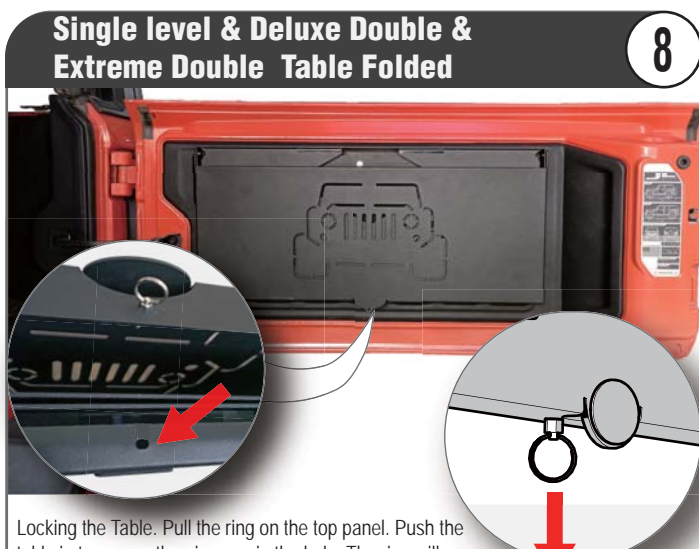
Open the EZ-Tailgate Table. Use Bolt M6x30 and washer to install. Put the Middle Screw in first. Then put in the other 2 screws in. Tighten the bolts snug. **DO NOT OVER TIGHTEN**



Open Position



Open Position



Locking the Table. Pull the ring on the top panel. Push the table in to ensure the pin goes in the hole. The ring will not move when the pin is in the hole properly.

## Customer Service

*Any question? WE ARE HERE TO HELP!*

**Text or Call 203-901-0055 / Call 203-591-9060**  
**EMAIL US: [SERVICE@EZTRUNK.NET](mailto:SERVICE@EZTRUNK.NET)**

*7 days a week 8:30 am EST*

## WE CAN HELP YOU!