

JUNE 26-28, 2024

MARYLAND

CONSTRUCTION & MATERIALS CONFERENCE

CONFERENCE GUIDE

Bridging Change Together



Hyatt Regency Chesapeake Bay

Cambridge, MD

#MCMC



Your Hosts:

Maryland Transportation Builders & Materials Association

Bruce Bergeron
Chair
VP of Construction, Machado Construction Company, Inc.

Michael Sakata
President & CEO
Maryland Transportation Builders & Materials Association

2408 Peppermill Drive, Ste. F
Glen Burnie, MD 21061
WWW.MTBMA.ORG

Maryland Ready Mix Concrete Association

Brendan Quinn
Board President and Chairman of the Board
President & CEO, Bay Ready Mix of Md
LLC/Ernest Maier, Inc.

Dee Dee Kennedy
Executive Director
Maryland Ready Mix Concrete Association
PO Box 617
Frederick, MD 21705
WWW.MARYLANDCONCRETE.COM

Maryland Asphalt Association

Jeff Graf
Chairman
General Manager - Asphalt Operations, Laney Companies

Tim Smith
President
Maryland Asphalt Association
2408 Peppermill Drive, Ste. G
Glen Burnie, MD 21061
WWW.MDASPHALT.ORG





Day 1 – Wednesday, June 26, 2024

- 1:00 – 3:00 pm **MAA Executive Committee Meeting** | Skipjack A/B
1:30 – 3:00 pm **MTBMA Board of Directors Meeting** | The LabRaRtory | Downtown Cambridge, MD
3:00 – 4:30 pm **MRMCA Board of Directors Meeting** | Choptank C
- 3:00 – 6:00 pm **Registration** | Choptank Foyer
3:00 – 6:00 pm **Program Sponsors’ Materials table available** | Choptank Foyer
7:00 – 9:00 pm **“Tropical Night” Cocktails & Dinner** | Crescent Pool Deck (*Choptank Ballroom for bad weather*)

Day 2 – Thursday, June 27, 2024

- 7:00 – 8:00 am **Registration & Breakfast** | Choptank Foyer & Choptank Patio
7:00 am – 7:00 pm **Program Sponsors’ Materials table available** | Choptank Foyer

General Sessions | Early Bird Raffle & Coffee | Choptank Ballroom

- 8:00 – 8:45 am **Economic Outlook for Construction Materials (.5 PDH)**
Presented by: George Reddin, Managing Director, FMI Capital Advisors, Inc.
- 8:45 – 9:15 am **On the Road with Transit (.5 PDH)**
Presented by: Kate Sylvester, Deputy Administrator – Chief Program Delivery Officer, Maryland Transit Administration
- 9:15 – 9:45 am **Buy Clean Maryland/Sustainability & Resilience/Transportation Funding (.5 PDH)**
Presented by: Sarah K. Elfreth, Maryland State Senator
- 9:45 – 10:15 am **Cybersecurity Threats & Operationalizing Zero Trust (.5 PDH)**
Presented by: David Grasso, Director, GDIT Defense Business Unit
- 10:15 – 10:20 am **Day 2 General Session Wrap-Up/Activity Directions**

- 11:00 am – 12:00 pm **Golf Tournament Sign-In & To-Go Lunch** | River Marsh Golf Club
12:30 – 5:00 pm **Golf Tournament Shotgun Start**
11:30 am **Fishing** | Straight Pier
1:00 pm **Yoga** | Manor Lawn (outside) or Choptank C (*inside for weather*)

- 6:15 – 9:00 pm **“Maryland Night” Reception & Dinner** | Regatta Pavilion

Day 3 – Friday, June 28, 2024

- 7:30 – 9:00 am **Registration & Breakfast** | Choptank Foyer
Virtual Presentation **Mental Health and Suicide Prevention in Construction: The Next Dimension of Safety (1 PDH)**
Presented by: Sonya Bohmann, Executive Director, The Construction Industry Alliance for Suicide Prevention
- 9:00 am **Conference Adjourned**

Thank you to our Sponsors!

Maryland Night Dinner
Sponsor



Official Lanyard Sponsor



Breakfast Sponsor



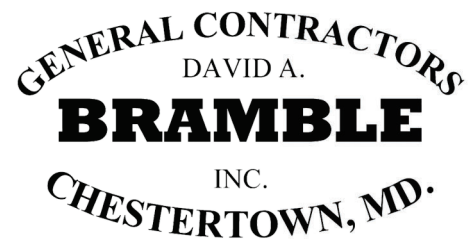
Coffee Station Sponsors



Bar Sponsors



Program Sponsors



Thank you to our Sponsors!

Golf Lunch Sponsor



Beverage Cart Sponsors



Golf Tee Sign Sponsors





Strength and Sustainability Redefined

Master X-Seed® admixtures help you:

- Achieve the Performance of Type I/II cement with Type I L cement
- Maintain consistent set time
- Reduce cement and lower carbon footprint (GWP)
- Improve Workability



www.master-builders-solutions.com

admixtures@masterbuilders.com

About our speakers:

Economic Outlook for Construction Materials



George Reddin
Managing Director,
FMI Capital Advisors, Inc.

George Reddin brings deep experience and expertise to construction materials companies (aggregate, hot-mix asphalt, ready-mixed concrete and concrete product producers) and road-building contractors. His specialties are mergers and acquisitions and financial advisory services.

His thorough familiarity with the industry and strong network of contacts enables him to assist clients in planning their exit strategies. George maps out business continuation plans for clients, including management succession and ownership transfer considerations. This process often involves internal transactions between family members or key employees. He possesses a clear understanding of the need for confidentiality and the desire of many owners to provide an opportunity for the company to continue.

George also knows the buy side, assisting in all stages of buyouts and mergers. He establishes the best acquisition criteria, screens and analyzes candidates, and facilitates purchase negotiations.

On-road Transit Bus System in Maryland

Kate Sylvester is Deputy Administrator and Chief Program Delivery Officer at the Maryland Transit Administration, where she oversees the development and construction of the capital program. Kate guides strategic planning and a wide range of capital projects across six transit modes.

Kate has nearly 20 years of experience working at the intersection of transportation planning and engineering spanning roadway, transit, bicycle, and pedestrian projects. She has a Masters Degree in Urban Planning and a Bachelors Degree in Civil Engineering. She has two daughters and spends her free time gardening, biking and dancing to whatever music her kids put on.



Kate Sylvester
Deputy Administrator,
Chief Program Delivery Officer,
Maryland Transit
Administration

About our speakers:

Buy Clean Maryland/Sustainability & Resilience/Transportation Funding



Sarah K. Elfreth
Maryland State Senator

First elected in 2018 to represent Annapolis and southern Anne Arundel County, Senator Sarah Elfreth is the youngest woman ever elected to the Maryland Senate. She is passionately committed to serving her constituents both in the State House and in the community. Sarah has led the charge to bring colleagues together across the aisle to pass the 91 bills she sponsored in her first six years in office - all with bipartisan votes. These new laws range from implementing the largest investment in Maryland's State Parks, creating Maryland's first Office of Statewide Broadband, providing treatment for veterans living with PTSD, expanding critical prenatal care for healthy Maryland mothers, and protecting forests, oysters, and clean water.

Sarah serves on the Budget & Taxation Committee where she Chairs the Subcommittee on Public Safety, Transportation and Environment and is responsible for balancing and overseeing the budgets of over 20 departments and agencies. As one of two senators representing Maryland on the multi-state Chesapeake Bay Commission, Sarah works with colleagues in Pennsylvania and Virginia to build regional consensus and implement policy solutions to protect and restore the Bay. In May of 2024, Sarah won the Democratic nomination in Maryland's 3rd Congressional District, building a diverse coalition to defeat more than 20 candidates.

Cybersecurity Threats & Operationalizing Zero Trust

Mr. Grasso is a leader with GDIT's Defense Business Unit, currently serving as the Director of Enterprise Architecture & Engineering for the US Southern Command's (USSOUTHCOM) SCITES Program. He leads SOUTHCOM's Zero Trust Cybersecurity Transformation efforts as the SCITES Chief Enterprise Architect and advises USSOUTHCOM Commanders, COO, and CTO. Grasso is known for his innovative leadership in transformations, delivering rapid and sustained innovation, enterprise interoperability, defensibility, and stability.

With over 30 years of experience, Mr. Grasso has led efforts in both private and public sectors, holding leadership roles in companies like Accenture, IBM, and Capgemini. He holds a BS in Mechanical Engineering & Physics from Drexel University and served in the US Nuclear Navy. An accomplished yachtsman and licensed captain, he now resides in St. Petersburg, Florida, after living in Annapolis, Maryland for 20 years.



David Grasso
Director, GDIT Defense
Business Unit

Mental Health and Suicide Prevention in Construction: The Next Dimension of Safety



Sonja Bohmann
Executive Director,
The Construction Industry
Alliance for Suicide
Prevention

Sonja Bohmann is the Executive Director for the Construction Industry Alliance for Suicide Prevention a 501 c (3) started in 2018. Our mission is to provide and disseminate information and resources for suicide prevention and mental health promotion in construction to create a zero-suicide industry.

Sonja has over a decade of experience in commercial remodel & refresh and facilities maintenance. Her background gives her a unique understanding of the mental health challenges construction workers face. This experience has given her valuable insight into how companies of all sizes are addressing these issues and the work that remains.

As a loss survivor, the topic of suicide prevention and awareness is always top of mind. Sitting on several non-profit boards such as the TKD Foundation, the Delaware County Suicide Prevention Task Force, and The Greater Philadelphia Chapter of the American Foundation for Suicide Prevention, Sonya is keenly aware of the work that we still must do to erase the stigma around creating a culture that is smart about Mental Health and Suicide Prevention. Having given over 50 presentations on the topic, it has become a personal mission to educate, bring awareness, and a voice to those who may be silent. The simple act of starting the conversation and creating a safe and open space for dialogue really does save lives.

Quality



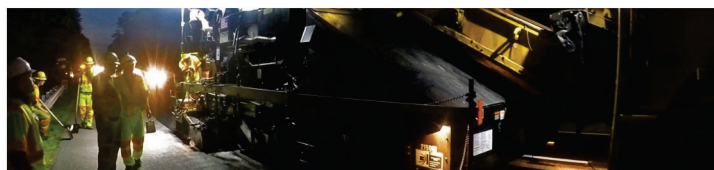
emulsion



for



every



application.



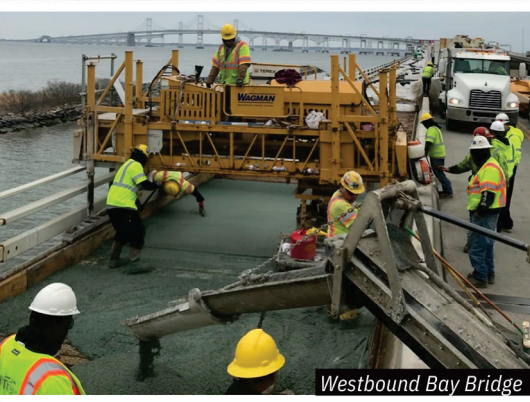
No matter what
you lay down,
we have the tack
and prime coats
to keep it down.

Contact:
Matt Gutkaiss
(804) 393-0790



Design-Build
Marine Construction
Bonded Concrete
Overlays
Infrastructure
Grooving and
Grinding
Geotechnical
Construction Services

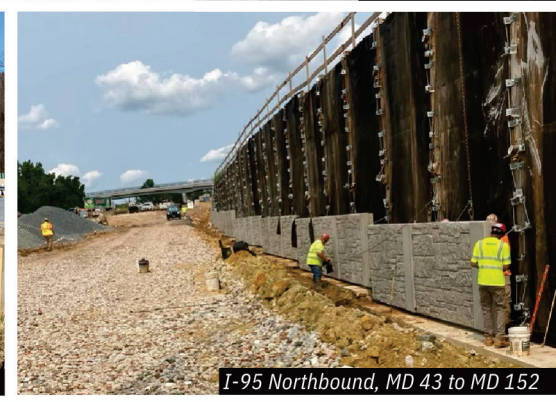
MD 152 Interchange



Westbound Bay Bridge



Westbound Bay Bridge



I-95 Northbound, MD 43 to MD 152

Heavy Civil Construction Experts

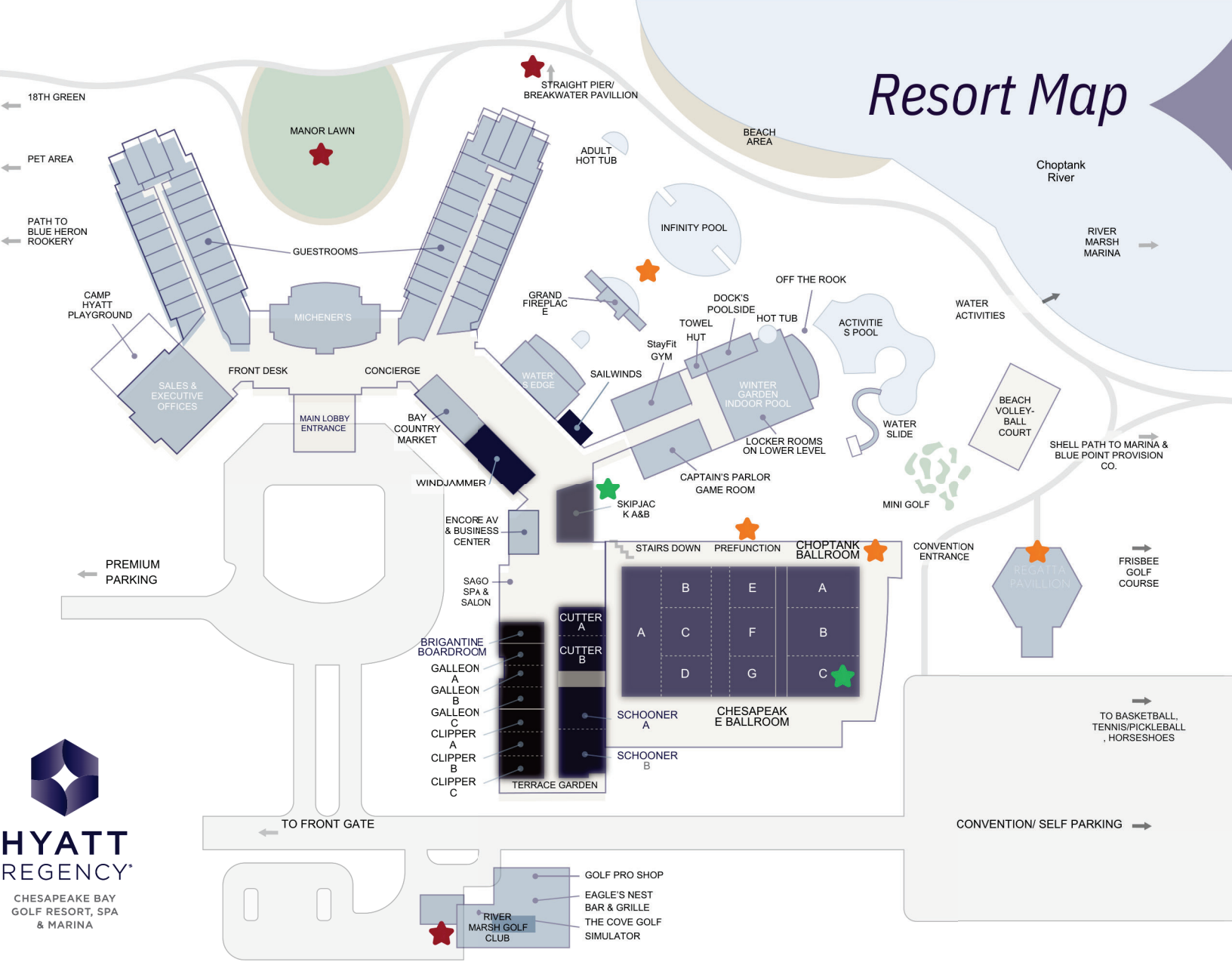
Wagman Heavy Civil is a nationally recognized leader in the transportation industry. We excel at overcoming challenges and providing innovative design and construction solutions on everything we do.



General Construction | Heavy Civil | Geotechnical

wagman.com

Resort Map



**HYATT
REGENCY**
CHESAPEAKE BAY
GOLF RESORT, SPA
& MARINA

Association Board Meetings

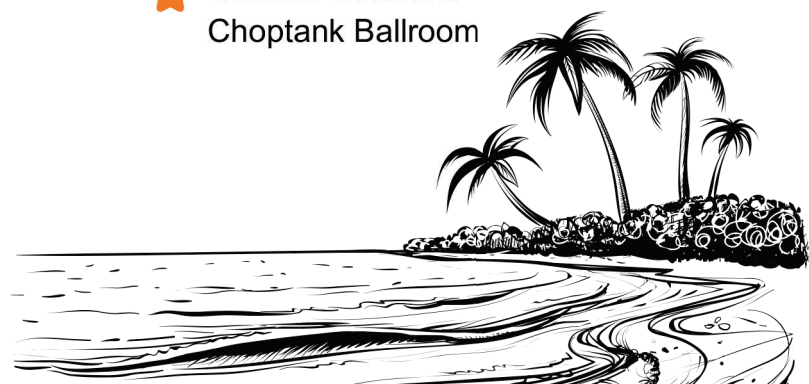
- ★ MAA Executive Committee Meeting
Skipjack A/B
- ★ MRMCA Board of Director Meeting
Choptank C
- ★ MTBMA Board of Directors Meeting, Offsite
The LabRaRtory | Downtown Cambridge, MD

Activities

- ★ Golf Sign-In & Lunch
River Marsh Golf Club
- ★ Fishing Sign-In
Straight Pier
- ★ Yoga Sign-In
Manor Lawn

Meals & Sessions

- ★ Registration/Breakfast Day 2&3
Choptank Foyer
- ★ Day 1 Dinner, "Tropical Night"
Crescent Pool
- ★ Day 2 Dinner, "Maryland Night"
Regatta Pavilion
- ★ General Sessions
Choptank Ballroom





SITE CONTRACTOR

- HOT MIX ASPHALT PAVING
- STORMDRAIN, WATER, AND SEWER
- MASS EXCAVATION
- SITE GRADING

RETAIL SALES

- HOT MIX ASPHALT
- RECYCLED MATERIALS
- SAND, GRAVEL, AND TOPSOIL

SERVICES

- ROLL OFF

NOW HIRING



HOME OFFICE

705 MORGNEC RD
CHESTERTOWN, MD
410-778-3023

SALISBURY OFFICE

28101 OLD EDEN RD
EDEN, MD
410-742-8484

WYE MILLS HOT MIX PLANT

WYE MILLS, MD
410-758-3677

MASSEY HOT MIX PLANT

MASSEY, MD
410-928-3870

Things to do in Cambridge:

OUTDOOR ACTIVITIES

Pintail Point Outfitters

Pintail Point Outfitters offers a safe environment for those looking to enjoy the sport of clay shooting. Certified instructors are on hand and offer lessons to have you shooting like a pro in no time. Gun rentals are available as well as retail ammunition.
(410) 827-7029

Windy Way Horses

Enjoy outdoor activities at Windy Way Horses. This farm located in Hurlock, Maryland, offers horse training, lessons, and most of all, trail rides. Fun for the entire family!
(443) 205-3429

Blackwater Wildlife Refuge

Blackwater National Wildlife Refuge is located approximately 12 miles south of the town of Cambridge. Blackwater was established in 1933 as a refuge for migratory birds. The Refuge includes over 27,000 acres, composed mainly of rich tidal marsh.
www.fws.gov/refuge/blackwater/contact-us

LOCAL LIBATIONS

RAR Brewing

Local boys brewing local beers on the shores of the Chesapeake Bay. Built in an 80-year-old former pool hall and bowling alley and brewing since 2013.
(443) 225-5664

Layton's Chance Winery

The best wine and winery tours this side of the Chesapeake set on more than 14 acres of beautiful vineyards!
(410) 228-1205

Ava's Pizza and Wine Bar

We're located downtown on the corner of Poplar & High Streets in a restored historic building in Cambridge. On beautiful days, enjoy a seat outside in front of our restaurant.
(443) 205-4350

Blue Ruin - Speakeasy Bar

Small Plates with intense flavor with a flare for Mixology!
(410) 995-7559

ARTS + CULTURE

Harriet Tubman Underground Railroad Visitor Center

The 17-acre site adjacent to Blackwater National Wildlife Refuge along MD 335 officially opened on March 11, 2017. The state park is a key destination for the Harriet Tubman Underground Railroad Byway.

Main Street Gallery

Established in 2008 as part of the town's newly designated Arts and Entertainment District. Over the years it has evolved into a privately operated cooperative gallery.

Richardson Maritime Museum

A hidden gem in the heart of Cambridge, Maryland, is the Richardson Maritime Museum. The museum offers tales of Dorchester County's influence on Chesapeake Bay traditional wooden sailing vessels. You will also find a unique collection of exquisite ship models.

Dorchester Heritage Museum & Gardens

Three historic buildings with interactive exhibits about farm life, industry, timbering, water trades, hunting and trapping and Native Americans families of the area.

SHOPPING + ENTERTAINMENT

Bay Country Antiques

The Eastern Shore of Maryland offers many antique shops where you can discover the area's history and tradition.

Dark Horse Antiques

Experience the area's history and tradition through antiquing.

Choptank Bowling Center

Looking for something to do that is fun for the whole family? Head over to Choptank Bowling Center.

Downtown Cambridge, MD

Cambridge, Maryland, is known for its beautiful buildings, and rich maritime and cultural heritage. From unique shops, amazing restaurants, and farmers markets,

Cambridge History

The city of Cambridge was founded in 1684. It is one of the oldest communities in Maryland. Cambridge was incorporated as a city in 1793. The present-day territory of Cambridge was originally a part of the Choptank Indian Reservation. Cambridge is known as the Queen City on the Eastern Shore. It played a key role in the Civil Rights Movement.



Thank you for joining us at the Maryland Construction & Materials Conference!

#MCMC



MARYLAND ASPHALT ASSOCIATION

