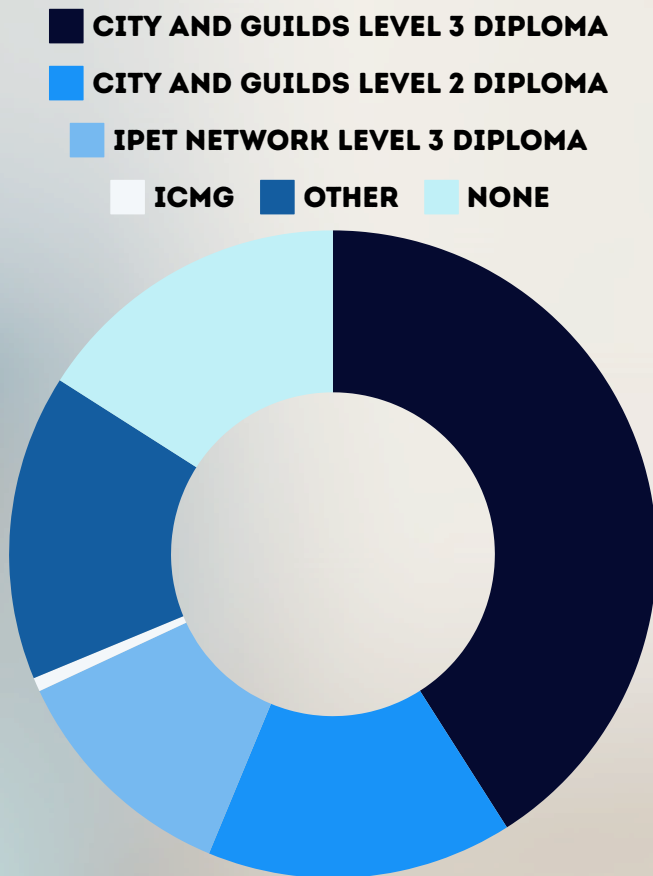


# A STUDY INTO COMMON GROOMING ISSUES - FRONT LEG SENSITIVITIES

A summary of the information gathered in the survey created for dog groomers. Over 200 people responded to the survey.

## QUALIFICATIONS

What qualification do you currently hold?

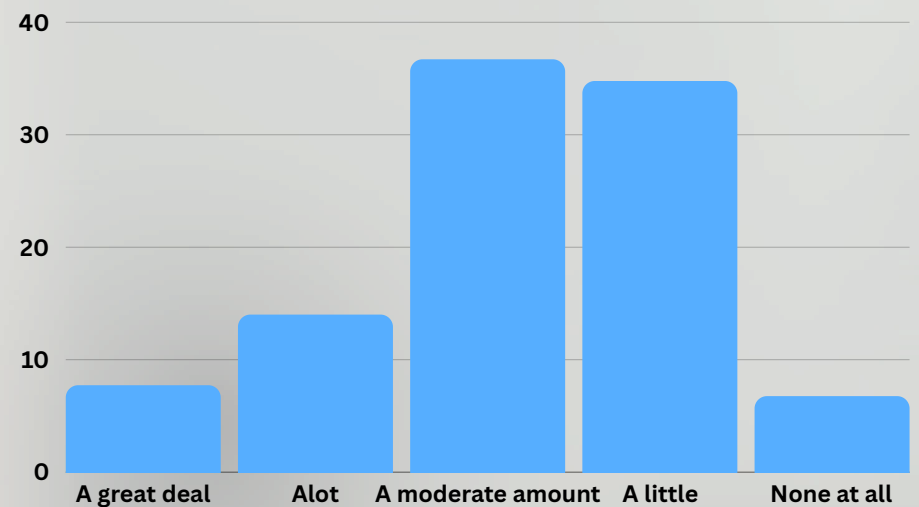
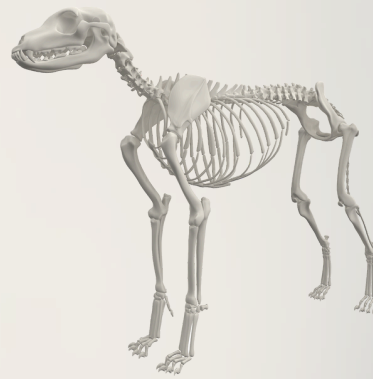


Those who answered none stated they had in house training, online training or were self taught

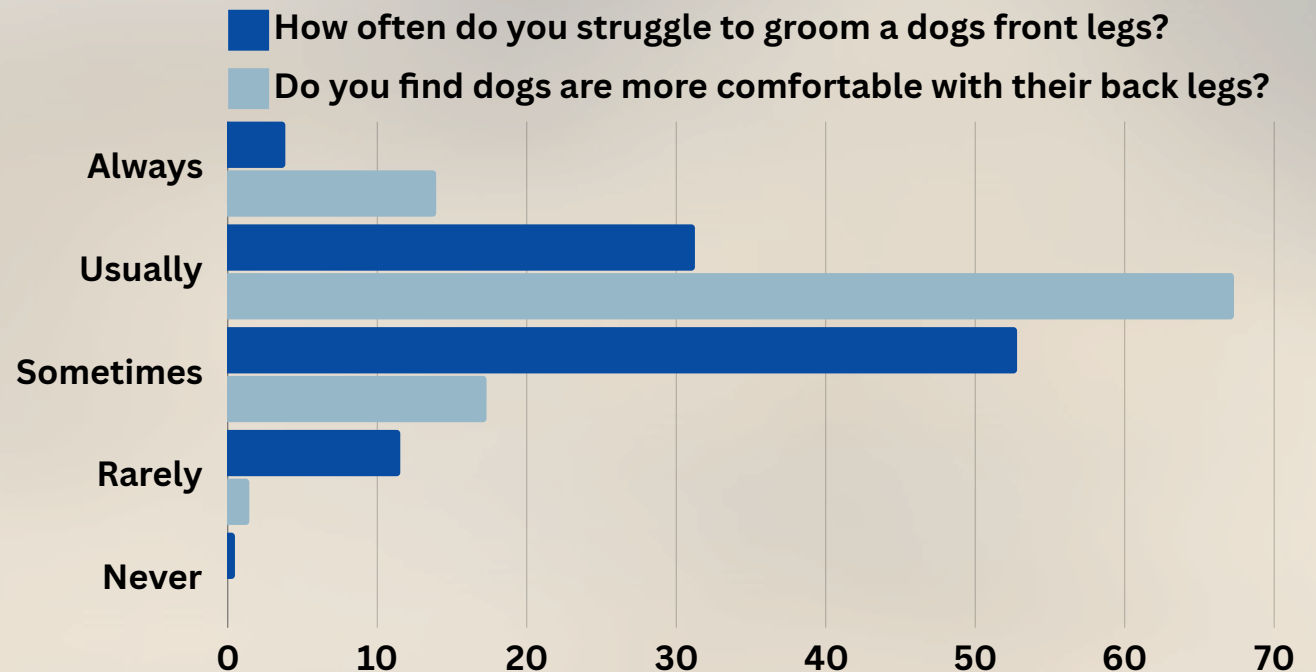


## TRAINING CONTENT

How much training did you receive on canine anatomy?



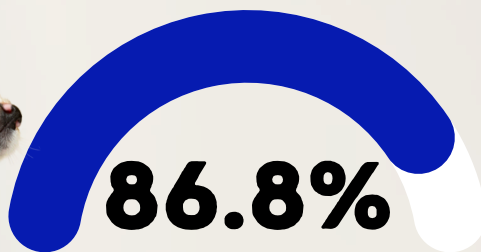
## HOW COMMON IS THE PROBLEM



# A STUDY INTO COMMON GROOMING ISSUES - FRONT LEG SENSITIVITIES

A summary of the information gathered in the survey created for dog groomers. Over 200 people responded to the survey.

## BEHAVIOUR

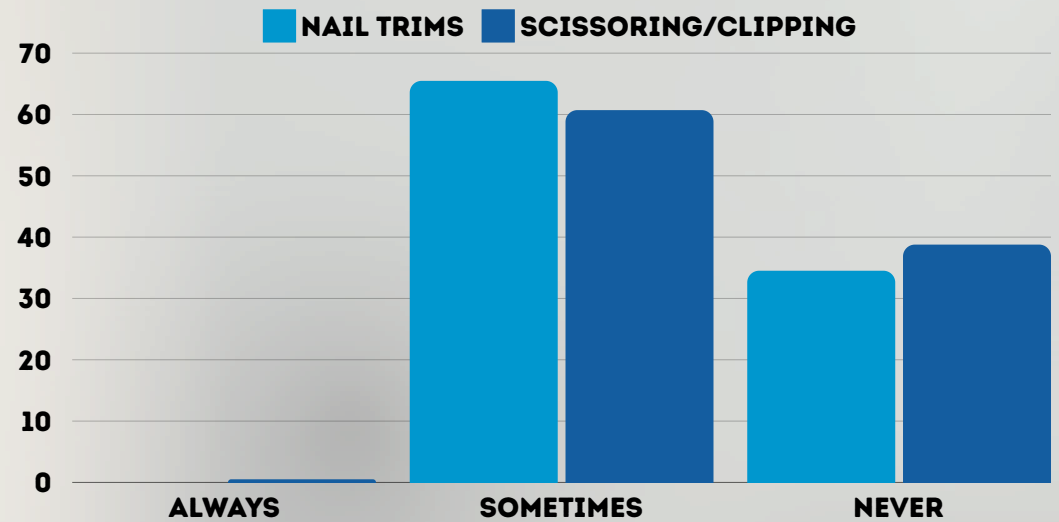


Said a dog has reacted aggressively to them when grooming their front legs

8% said they didn't inform the guardian



How often do you need to use a muzzle to complete the following?



Some groomers stated they would only use a muzzle if it had been positively introduced.

Some also stated they preferred to use a buster collar or groomers helper



49%

Said they can complete the groom without the dog needing to return to finish their front legs

56%

Said they felt the dogs were in **little or no pain.** 29% said 50/50

9%

Said they felt majority of their clients would visit the vets on the groomers advice

61%

Said they found it easier to clip a dogs back claws. 34% said it was about the same for front and back

# A STUDY INTO COMMON GROOMING ISSUES - FRONT LEG SENSITIVITIES

A summary of the information gathered in the survey created for dog groomers. Over 200 people responded to the survey.

## IS THERE A PARTICULAR BREED YOU THINK STRUGGLES MORE WITH THEIR FRONT LEGS BEING HANDLED?



It's important to note that the vast majority of dogs visiting the groomers are cockapoos and doodles

4% of groomers felt it was more to do with a dogs conformation rather than breed specific or that it was due to them being overweight

