

# OIPMU

## THE OHIO INSTITUTE OF PERMANENT MAKEUP



# SCHOOL CATALOG

**AUTHORIZED BY THE OHIO BOARD OF CAREER COLLEGES & SCHOOLS  
REGISTRATION #2273**

*September 2025 Edition*

# **Approved Programs**

## **100-Hour AAM Permanent Brows Certificate Program – Board Certification**

Objective: To prepare students for professional PMU practice and AAM board certification through in-depth training, advanced techniques, and six model procedures. This program emphasizes mastery of artistry, safety, and client care.

AAM-approved curriculum (American Academy of Micropigmentation)

Includes 6 brow models with instructor evaluation

Comprehensive theory + advanced business prep

Tuition: \$6,799 (kit included)

AAM Exam Fee: \$397 (paid separately)

Model Deposit Required: \$100 Refundable Deposit

## **50-Hour Powder Ombre & Combo Brows Certificate Program**

Objective: To advance student skills in brow artistry by combining classroom instruction with an apprenticeship experience. Students will complete five live model procedures to build consistency, control, and professional readiness.

Builds on fundamentals with advanced shading, depth & pressure techniques.

Includes 5 live model procedures (1 during class + 4 in apprenticeship)

Instructor review and apprenticeship supervision

Tuition: \$4,124 (kit included)

Apprenticeship model fee: \$100

## **30-Hour Fundamentals of PMU Brows Certificate Program**

Objective: To introduce students to the foundational skills of permanent makeup brows, focusing on Powder Ombre and Combo techniques. Students will gain understanding through theory, practice on latex and mannequins, and one live model procedure.

Learn Powder Ombre & Combo Brows

Includes brow mapping, color theory and best practices

1 live model + latex & mannequin practice

Tuition: \$3,424 (kit included)

# **Table Of Contents**

Introduction .....	<b>4</b>
Administrative Staff, Faculty, Facilities .....	<b>5</b>
Admission Requirements .....	<b>6</b>
Class Schedule .....	<b>6</b>
Process and Grading .....	<b>7</b>
Enrollment Procedures .....	<b>7</b>
Graduation Requirements .....	<b>8-11</b>
Attendance, Dismissals, & Reentrance Policies .....	<b>12-13</b>
Dress Code and Conduct .....	<b>14-15</b>
Refund Policies, Grievances, & Appeals .....	<b>15-16</b>
Placement Policy .....	<b>17</b>
Holiday .....	<b>17</b>
Program Outlines .....	<b>18-25</b>
Tuition .....	<b>25-26</b>

## Message From The Director



**Brensha "Shay" Searcy, BSc, DiAAM**  
Founder & School Director  
AAM Board Certified Trainer

Welcome to **The Ohio Institute of Permanent Makeup**, and congratulations on taking the first step into the transformative world of permanent cosmetics. You're joining a community committed to artistry, precision, and professional excellence.

At OIPMU, our mission is to elevate the standards of PMU education by developing skilled, confident, and ethical technicians. We believe that when artists are well-trained, clients are well-served and that integrity in education shapes the integrity of the entire industry.

Here, you'll find a supportive, professional learning environment where every student receives personalized attention, hands-on practice, and mentorship from experienced instructors and advanced artists. We're deeply committed to your growth, confidence, and long-term success.

We ask that you bring the same dedication and professionalism to your training that we bring to your education. Together, we'll turn your passion into a career that truly makes a difference.

**Welcome to the OIPMU family—where education meets excellence and artists become professionals.**

# **Administrative Staff, Faculty, Facilities**

Brensha Searcy, B.Sc., DiAAM  
School Director/AAM Board Certified Trainer

The school is designed for the training of beginner students for the study of permanent cosmetics, with a focus on foundational principles and brow tattooing techniques – Powder Ombre and Combination Brows. Our current space is 1400 sq. ft and is equipped to provide students with classroom & hands-on training. There is a maximum of 3 students per cohort in our current setting.

OIPMU is located at 9425 Olde 8 Rd #2, Northfield Center OH 44067. There is plenty of parking at the front entrance of the building.

In our classroom, we use a variety of tools such as latex, silicone & mannequin heads for students to train with that simulate working on skin. Students will be shown how to properly execute brow tattooing techniques & understand depth, pressure, & will be educated on BBP requirements.

## **Professional Memberships & Associations**

OIPMU is an approved educational provider for the following organization:

American Academy of Micropigmentation (AAM)

# Admission Requirements

Students must present a valid photo identification and a valid bloodborne pathogens (BBP) and First Aid/CPR certificate. All applications for class will be reviewed by the director for approval. No one will be denied admittance base on age, sex, race, or religion. We are an equal opportunity school with a diverse student base.

## Class Schedule

In-Class Course ( 5 days 100 hr)

Thursday-Monday 11:00am to 8:00pm

**Direct Hands-On Procedures (Apprenticeship Component 20hrs)** to be completed within 8 weeks from last day of class (all models will be scheduled by appointment only).

In-Class Course (3 Days 30hr & 50 hr)

Thursday-Saturday 11:45am to 6:00pm

**Direct Hands-On Procedures (50 hr Apprenticeship Component 20hrs)** to be completed within 8 weeks from last day of class (all models will be scheduled by appointment only).

Apprenticeship hours are scheduled on Tuesday, Wednesday, Thursday, and Saturday from 1:30 p.m.–7:00 p.m. (Saturdays until 6:00 p.m.). Apprenticeships are by appointment only and availability is not guaranteed. Hours may be limited or adjusted based on scheduling demands and space limitations. Students are responsible for scheduling their apprenticeship hours in advance to ensure placement.

# Process And Grading

Students will be graded daily and given direct feedback to ensure that the work is being understood and completed. Students must complete and submit all quizzes & homework assignments by the due date. Students in the 100hr & 50hr programs must complete a final written exam with a grade of 80% or higher.

**Satisfactory Progress Policy** – A variety of methods including observation, hands-on client work, quizzes, homework, class participation and the final exam are used to determine student progress. A minimum grade of 80% on the final written exam and the successful completion of model work is required to successfully complete the program. Missed or unsatisfactory performance on quizzes, homework, final exam and hands-on client model work must be made up within 14 days. Students making unsatisfactory progress are given options to improve skills. These options include attendance at additional classes, shadowing opportunities, tutorials, and supervision.

**Course Repetitions** – A student must repeat the program if the student fails to meet the requirements. Full fees must be paid for the program.

## Enrollment Procedures

Before attending class, each student must complete an application form, student enrollment form, Ohio student disclosure form and required training agreements. Space is limited, a registration fee of \$125 must be paid to book your seat for class. Balance must be paid 2 weeks before the 1st day of class.

# Graduation Requirements

## **100HR AAM PERMANENT BROWS CERTIFICATE PROGRAM**

To be awarded a Certificate of Completion, students must meet all of the following requirements:

- Successful completion of 100 clock hours.
- Achieve 80% or higher on the final written examination.
- Successful completion of 6 client brow procedures evaluated by an Instructor. A minimum of 2 procedures must be fully supervised by an Instructor and the student must successfully complete at least 90% of the procedure unassisted to demonstrate the minimum competency required to advance to the apprenticeship component. If the student is unable to meet the 90% requirement, they will not be permitted to advance to the model/apprenticeship component until satisfactory work has been completed on latex.
- Adherence to sanitation and Bloodborne Pathogens (BBP) protocols is **mandatory**. Any procedure in which sanitation, safety, or BBP standards are not properly followed will be considered unsuccessful and must be repeated under instructor supervision. Additional fees will apply for repeat or make-up procedures.
- Students will be evaluated and graded on the following core competencies: depth/pressure, stretch, brow mapping/shaping, color selection, client consultation, and sanitation.
- Sit for the AAM Board Certification Examination within 90 days of completing the final model procedure. Students who fail to schedule or sit for the exam within this timeframe will not be issued a Certificate of Completion.
- Exam fees and any costs associated with scheduling, rescheduling, or retaking the AAM Board Certification Examination are the responsibility of the student.

## **50HR POWDER OMBRÉ & COMBO BROWS CERTIFICATE PROGRAM**

To be awarded a Certificate of Completion, students must meet all of the following requirements:

- Successful completion of 50 clock hours.
- Achieve 80% or higher on the final written examination.



# Graduation Requirements

- Successful completion of 5 client brow procedures (apprenticeship) evaluated by an Instructor. A minimum of 1 procedure on day 3 must be supervised, and the student must complete at least 90% of the procedure unassisted to demonstrate the minimum competency required to advance to the apprenticeship component. If the student is unable to meet the 90% requirement, they will not be permitted to advance to the model/apprenticeship component until satisfactory work has been completed on latex.
- Adherence to sanitation and Bloodborne Pathogens (BBP) protocols is mandatory. Any procedure in which sanitation, safety, or BBP standards are not properly followed will be considered unsuccessful and must be repeated under instructor supervision. Additional fees will apply for repeat or make-up procedures.
- Students will be evaluated and graded on the following core competencies: depth/pressure, stretch, brow mapping/shaping, color selection, client consultation, and sanitation.

## **30HR FUNDAMENTALS OF PERMANENT MAKEUP BROWS CERTIFICATE PROGRAM**

To successfully complete this program, students must meet all of the following requirements:

- Successful completion of 30 clock hours.
- Successful completion of 1 client brow procedure performed on day 3, evaluated by an Instructor. The student must complete at least 90% of the procedure unassisted to demonstrate a basic level of competency.
- Adherence to sanitation and Bloodborne Pathogens (BBP) protocols is mandatory. Any procedure in which sanitation, safety, or BBP standards are not properly followed will be considered unsuccessful and must be repeated under instructor supervision. Additional fees will apply for repeat or make-up procedures.
- Students will be evaluated and graded on the following core competencies: depth/pressure, stretch, brow mapping/shaping, color selection, client consultation, and sanitation.

# Graduation Requirements

## **Certificates:**

- All students will receive a Certificate of Attendance for participation in their enrolled program.
- Students who successfully complete all requirements of the 100HR and 50HR programs will be awarded a Certificate of Completion, verifying that all graduation requirements have been met.
- The 30HR program awards a Certificate of Attendance only.
- The Ohio Institute of Permanent Makeup reserves the right to withhold certificates if graduation requirements are not fully met or if professional conduct standards are violated.

## **Apprenticeship Program Policy**

The apprenticeship component is designed to provide students with practical, hands-on experience with Instructor feedback to ensure skill development and competency prior to program completion. The following policies apply:

## **Scheduling & Hours**

- Apprenticeship hours are scheduled on Tuesday, Wednesday, Thursday, and Saturday from 1:30 p.m.–7:00 p.m. (Saturdays until 6:00 p.m.). Apprenticeships are by appointment only, and availability is not guaranteed. Hours may be limited or adjusted based on scheduling demands and space limitations. Students are responsible for scheduling their apprenticeship hours in advance to ensure placement.
- Apprenticeships are conducted under limited supervision with staff on site. Students are expected to perform procedures independently, demonstrating basic level competency and professionalism. Prior to beginning work, students are required to obtain instructor approval of brow shaping and color selection. Students are not permitted in the office or studio without an instructor present on site.

## **Model Fee**

- A \$100 model fee is required at the time of scheduling to confirm each appointment. If the fee is not submitted, the appointment

# Graduation Requirements

will be removed from the calendar. For students in the 100hr program, the \$100 will be refunded once the appointment is completed. If the appointment is cancelled without proper notice or if the client is a no-show, the deposit will not be refunded and a new model fee will be required to reschedule.

## Consent & Documentation

- All client consent forms must be signed and completed before any procedure begins. Completed forms must be reviewed and signed off by an instructor.

## Insurance Requirement (50HR Program Only)

- Students enrolled in the 50HR Powder Ombré & Combo Brows Certificate Program are required to maintain active professional & liability insurance before apprenticeship can begin. Proof of coverage must be submitted prior to scheduling apprenticeship hours.

## Attendance & Cancellations

- Students are expected to attend all scheduled apprenticeship appointments. Failure to appear for a scheduled model or apprenticeship session may result in additional fees and may delay program completion. Cancellations must follow the school's 72-hour cancellation policy.

## Sanitation & Safety

- Strict adherence to sanitation and Bloodborne Pathogens (BBP) protocols is required during every apprenticeship procedure. Any procedure in which sanitation, safety, or BBP standards are not properly followed will be considered unsuccessful and must be repeated under instructor supervision. Additional fees may apply for repeat or make-up procedures.

## Completion Requirement

- All apprenticeship hours and required procedures must be completed within the program timeframe of 8 weeks.

# **Attendance, Dismissals, & Reentrance Policies**

OIPMU is not responsible for delays in completion due to student failure to schedule or attend apprenticeship hours.

## Program Compliance

- Failure to follow program rules, policies, or professional conduct standards may result in dismissal from the program and loss of access to the institute for model work.

## Attendance & Completion Policy

Timely attendance and completion of coursework are essential to ensure skill retention, competency, and fairness for all students. The following rules apply:

- Attendance Requirement
  - Students must attend all scheduled classes.
  - Advance notice must be given to the school for any intended absences.
  - Missed classes must be rescheduled for the next available date, as determined by the instructor.
- Absences
  - More than two absences during the week course may result in dismissal unless a valid reason is accepted by the school.
- Leaves of Absence
  - Requests must be submitted in writing and approved by the School Instructor or Director.
  - An approved leave is valid for up to 6 months to make up missed classes and/or client procedures.
  - After 6 months, the student will be dismissed from the program.
- Model Work & Apprenticeship Completion
  - All requirements must be completed within 2 months from the last day of class.

# **Attendance, Dismissals, & Reentrance Policies**

- A one-month extension may be granted if the student submits a written request with valid reason to the School Director. Approval is at the Director's discretion and not guaranteed.
- Financial Responsibility
  - Students who fail to complete within the required timeframe (including any approved extension) will be dismissed and may be required to re-enroll and pay additional tuition or fees to complete training.
- Dismissal & Appeals
  - Failure to adhere to any attendance or completion requirement will result in dismissal from the program.
  - Students have the right to appeal within 48 hours of dismissal notification by submitting a written appeal.
  - If approved, the student may be reinstated and allowed to reschedule remaining classes or requirements at no additional cost.

Reentrance – Students dismissed for unsatisfactory performance and who have proven themselves incapable of doing the work required will not be permitted to reenter. If a student has previously withdrawn, all current application and admission procedures must be followed as if the student is a new applicant. Full tuition, at current rates, must be paid.

# Dress Code and Conduct

Students are expected to conduct themselves in an ethical and professional manner. Behavioral conduct such as academic dishonesty, harassment, theft, damage to school property, damage to another's property on school premises, verbal, or physical abuse to a OIPMU employee, student or customer on or off the premises, and intentional disruption or obstruction of any school proceeding, may have consequences up to and including class failure and/or termination from the school.

OIPMU will follow all safety & sanitation protocols set forth from the Ohio Department of Health and the State of Ohio regarding infectious disease. Students are expected to follow all safety & sanitation protocols as required by the school and the Ohio Department of Health. Failure to follow safety & sanitation rules may have consequences up to and including class failure and/or termination from the school.

OIPMU has a zero on campus drug and alcohol policy. OIPMU will support any student and/or employee seeking treatment for drug or alcohol abuse.

OIPMU is a smoke-free campus, outside of specific designated smoking areas. This includes any vape devices. Persons with a strong smell of smoke may be asked to leave and return after removing the smell for hands on activities and labs.

## **SCRUB UNIFORM REQUIREMENTS:**

Students must wear solid black scrubs during all model and client practicals. Scrubs must be clean and professional in appearance, and closed-toe shoes are required. Students not in proper uniform will be dismissed from the practical and required to make up the session. Make-up sessions will incur additional fees as determined by the school.

Prohibited Attire. The following are not permitted during practicals: denim, leggings/joggers not designed as scrubs, shorts, crop tops, sheer fabrics, open-toe/vented footwear, and outerwear that obscures the uniform while performing services.

# **Dress Code and Conduct**

Clothing should allow for full coverage and mobility as well as anti-slip shoes in procedure areas. Disposable aprons provided by the school may be used during procedures.

Rings should be removed during procedures. Fingernails must be modest in length and appropriate for hands on activities and procedures. Appropriate appearance and cleanliness are always expected, and you may be asked to leave and return prepared if not appropriate and clean.

If circumstances prohibit you from adhering to the above, please discuss with the administration as additional support options may be available.

## **Refund Policies, Grievances, & Appeals**

The school provides education and training services to the community. The registration of a student in the assignment of class space, the employment of instructors, and other provisions must be contracted in advance. A full refund of monies shall be returned to an applicant cancelling enrollment within five (5) business days of signing the enrollment agreement. After five (5) days, the application and registration fees will be non-refundable. Refunds will be made within 30 days of cancellation. Additionally, OIPMU reserves the right to delay and/or cancel a program start when the number of enrolled for that start date is too small to economically begin that class. Students may accept the new start date or have all monies refunded.

The Ohio Institute of Permanent Makeup refund policy will follow the guidelines as established in the Ohio Administrative Rule 3332-1-10 and refunds will be issued within thirty days of student's withdrawal.

# **Refund Policies, Grievances, & Appeals**

1. A student who starts class and withdraws before the academic term is fifteen percent complete will be obligated for twenty-five percent of the tuition and refundable fees plus the registration fee.
2. A student who starts class and withdraws after the academic term is fifteen percent complete but before the academic term is twenty-five percent completed will be obligated for fifty percent of the tuition and refundable fees plus the registration fee.
3. A student who starts class and withdraws after the academic term is twenty-five percent complete but before the academic term is forty percent completed will be obligated for seventy-five percent of the tuition and refundable fees plus the registration fee.
4. A student who starts class and withdraws after the academic term is forty percent completed will not be entitled to a refund of the tuition and fees.

If a student has any concerns, complaints, or grievances with their classes or instructors, the student is encouraged first to speak with the director. Every effort will be made to achieve resolution.

A student may also direct any complaints to the Ohio State Board of Career Colleges and Schools, 30 East Broad St., Suite 2481, Columbus, Ohio, 43215, Phone 877-275-4219.

Students wishing to appeal a decision made by OIPMU may do so in writing within two days of the incident. Any mitigating circumstances should be included in the written statement for consideration and directed to the administration office. Students will be notified of the decision in writing within one week.



# **Placement Policy**

In Compliance with the Federal Trade Commission of Ohio State Law, OIPMU does not guarantee the student a job. The student understands that upon graduation, the tuition paid was for instruction, not job placement. Our school can advise on job placement or business startup assistance. Our school is designed to train in the profession of permanent cosmetics. Our goal upon graduation is that our beginner students will be ready to begin a career as a competent Permanent Makeup Technician.

## **Holiday**

There will be no classes on following holidays:

NEW YEAR'S EVE

NEW YEAR'S DAY

MEMORIAL DAY

INDEPENDENCE DAY

LABOR DAY

THANKSGIVING DAY

CHRISTMAS EVE

CHRISTMAS DAY

Any classes scheduled to start on a holiday will begin the following day. Instruction missed due to a holiday will be made up in a day and time designated by your instructor.

# 100HR AAM PERMANENT BROWS CERTIFICATE PROGRAM

This curriculum exceeds the minimum requirements that have been set by the Ohio Department of Health for new permanent makeup technicians. The Ohio Department of Health regulates facilities for compliance and does not play a role in PMU education. The following curriculum has been approved by the American Academy of Micropigmentation (AAM) and students will be eligible to sit for the AAM board certification exam upon program completion.

## Summary Of Curriculum

### PRE-CLASSWORK & HOME STUDY (35 HOURS):

- 2 Hours: Bloodborne Pathogen Certificate (Online Training)
- 33 Hours: Homework Assignments (5 hrs) & Home Study (28 hrs)
  - Home Study Requirements: 2 weeks prior to class Students will receive the training guide & begin receiving additional guides (educational videos, quizzes, info sheets) and are expected to complete 2 hrs per day reviewing and studying the material to count towards the home study requirement.

### **CLASSROOM & HANDS-ON TRAINING (65 HOURS):**

#### **DAY 1: 10 HOURS**

- 45min: Welcome & AAM Overview / Apprenticeship Program Introduction
- 1hr 15min: Program Overview & Intro to Permanent Makeup Lecture
  - Skin Anatomy & Types
  - Health Contraindications
  - Color Theory: Corrections & Wheel
  - Sanitation Standards
- 1hr 30min: PMU Kit & Supplies Overview
  - Tattoo Needle Labels & Configurations
- 2hr: Latex & Mannequin Practice
  - Machine Mechanics
  - Techniques: Flicking, Pendulum, Pointillism, Back & Forth

# 100HR AAM PERMANENT BROWS CERTIFICATE PROGRAM

## DAY 1 Continued..

- Brow Outlining & Whip Shading (Video)
- Microblading Head Strokes & Combo Brows o Balloon Practice
- Balloon Practice
- 1hr 30min: Brow Mapping Techniques
  - Line Placement
  - Eyebrow Anatomy
  - Hands-on Mapping Practice
- 1hr: Continued Latex & Mannequin Practice
- 1hr: ▪ Health Dept. Licensing Requirements ▪
  - Cross Contamination Risks
  - In-Class Student Quiz
- Homework: Latex Practice, Online Quizzes

## DAY 2: 10 HOURS

- 45min: Microblading Head Strokes (Combo Brows Technique)
- 2hr 15min: Latex/Mannequin Practice
  - Pigment Swatch Sheet Exercise
- 1hr: Brow Mapping Practice
- 3hr: **Live Client Brow Demo by Shay**
  - Tray Setup & Client Consultation Process
- 1hr: Needle Configurations & Label Reading
  - Quiz
- 1hr: Client Consent Forms & Documentation
  - Medical Profile Review
  - Record Keeping & Photo Releases
  - Watch: AAM Mastering Client Consultations Video
- Homework: Latex Practice, Videos, Online Quizzes

## DAY 3: 10 HOURS

1hr: Latex & Mannequin Practice (Machine & Combo Brows)

1hr 15min: Workstation Setup

4hr 45min: **Student Model Practical #1**

# 100HR AAM PERMANENT BROWS CERTIFICATE PROGRAM

## DAY 3 continued..

- 30min: PPE & Workstation Breakdown ▪
  - Review
- 30min: Marketing & Photography
  - Photo Watermarking Apps
  - Pre & Post-Care Review
- 1hr: Continued Latex & Mannequin Practice
- 1hr: Brow Mapping Practice
- Homework: Latex Practice, Videos, Online Quizzes

## DAY 4: 10 HOURS

- 1hr: Pigment Selection & Topical Anesthetics
- 1hr 15min: Latex & Mannequin Practice
- 15min: Workstation Setup
- 4hr: **Student Model Practical #2**
  - Room Setup & Breakdown
  - Content Creation & Photos
- 30min: Model Review & Q&A
- 1hr: Color Theory & Corrections
  - Mixing Colors
  - Brow Corrections & Neutralization Activity
  - Quiz
- Homework: Latex Practice, Videos, Online Quizzes

## DAY 5: 10 Hours

2hr: Shading Practice on Latex & Mannequins  
1hr: Microblading & Combo Brows Practice  
2hr: Brow Mapping Practice  
2hr: Advanced Shading Techniques  
1hr: Final Quiz & Review

# 100HR AAM PERMANENT BROWS CERTIFICATE PROGRAM

## **DAY 5 continued..**

- 1hr: Sales & Marketing
  - Student Certificates & Final Photos
  - Online Presence, Apps, and Professionalism
  - Aftercare Products & Supplier List
  - Next Steps in the Program
- Homework: Latex Practice, Videos, Online Quizzes

## **Additional Models (4)**

In Class: 20 hours

- 4 Live Procedures

\*Students will complete an additional 4 models at OIPMU under limited supervision that will be reviewed by instructor for satisfactory completion. Each procedure will count as (5) hours per model towards the 65-hour classroom instruction requirement. Students are responsible for securing their own models during the apprenticeship component.

## **Additional Fees or Expenses**

Models during the apprenticeship component will incur an additional expense of \$100 per model, to be paid at the time of scheduling. This fee is non-refundable. Liability insurance will be required for each student and will vary between \$500 and \$900 annually.

# **50HR POWDER OMBRE & COMBO BROWS CERTIFICATE PROGRAM**

This program exceeds the minimum requirements that have been set by the Ohio Department of Health for new permanent makeup technicians. The Ohio Department of Health regulates facilities for compliance and does not play a role in PMU education. Our school is committed to raising awareness regarding the lack of inefficient training requirements in PMU education and is committed to providing students with an appropriate education that supports the development of new PMU technicians entering the industry.

## **Summary Of Curriculum – 50HR PROGRAM (CLOCK HRS)**

### **PRE-CLASSWORK & HOME STUDY (6 HOURS):**

- 2 Hours: Bloodborne Pathogens Online Training (Lecture)
- 4 Hours: Home Study (Lecture)
  - Home Study Requirements: 2 weeks prior to class Students will receive the training guide & begin receiving additional guides (educational videos, quizzes, info sheets) and are expected to complete time per day reviewing and studying the material to count towards the home study requirement.

### **CLASSROOM & HANDS-ON TRAINING (44 HOURS):**

#### **DAY 1: 8 HOURS**

##### **In Class: 6 Hours**

- 1.5 Hours: Introduction to Permanent Makeup (Lecture)
- 30 min: Machine & Kit Supplies/Machine Mechanics (Lab)
- 1hr 30 min: Brow Mapping Line Placements, Eyebrow Anatomy & Mapping Practice on Mannequin Head & Students (Lab)
- 2 Hours: Latex & Mannequin Practice (Lab)
- 30 min: Sanitation & Health Department Licensing Requirements; Dangers of Cross Contamination (Lecture)
  - Homework: 2 Hr
    - Latex Practice



# 50HR POWDER OMBRE & COMBO BROWS CERTIFICATE PROGRAM

## DAY 2: 8 HOURS

In Class: 6 Hours

- 2 Hours: Latex & Mannequin Practice (Lab)
- 1 Hour: Brow Mapping Practice (Lab)
- 3 Hours: Instructor Demonstration & Client Consultation (Lab)
  - Homework: 2 hrs
    - Latex Practice (Lab)

## DAY 3: 8 HOURS

In Class: 8 Hours

- 4 Hours: Latex & Mannequin Practice (Lab)
- 4 Hours: **Student Model Practical**
  - PPE & Workstation Setup (Lab)

Additional Models (4) – APPRENTICESHIP COMPONENT: 20 HOURS

In Class: 20 hours

- Student Practical (Lab)
  - Students will complete an additional 4 models at OIPMU under limited supervision within 2 months that will be reviewed by instructor for satisfactory completion. Each procedure will count as (5) hours per model. Students are responsible for securing their own models during the apprenticeship component.

# **30 HR FUNDAMENTALS OF PERMANENT MAKEUP BROWS CERTIFICATE PROGRAM**

Students completing this program will learn 2 brow techniques: Powder Ombre Brows & 3D Combination Brows. Students will also learn brow mapping techniques and how to perform color corrections and coverups.

## **Summary Of Curriculum – 30 CLOCK HOURS**

### **PRE-CLASSWORK & HOME STUDY (6 HOURS):**

- 2 Hours: Bloodborne Pathogens Online Training (Lecture)
- 4 Hours: Home Study (Lecture) or Home Study Requirements: 2 weeks prior to class Students will receive the training guide & begin receiving additional guides (educational videos, info sheets, & online quizzes) and are expected to complete time per day reviewing and studying the material to count towards the home study requirement.

### **CLASSROOM & HANDS-ON TRAINING (24 HOURS):**

#### **DAY 1: 8 HOURS**

##### **In Class: 6 Hours**

- 1.5 Hours: Introduction to Permanent Makeup (Lecture)
- 30 min: Machine & Kit Supplies/Machine Mechanics (Lab)
- 1hr 30min: Brow Mapping Line Placements, Eyebrow Anatomy & Mapping Practice on Mannequin Head & Students (Lab)
- 2 Hours: Latex & Mannequin Practice (Lab)
- 30 min: Sanitation & Health Department Licensing Requirements; Dangers of Cross Contamination (Lecture)
  - Homework: 2 Hrs
    - Latex Practice



# 30 HR FUNDAMENTALS OF PERMANENT MAKEUP BROWS CERTIFICATE PROGRAM

## DAY 2: 8 HOURS

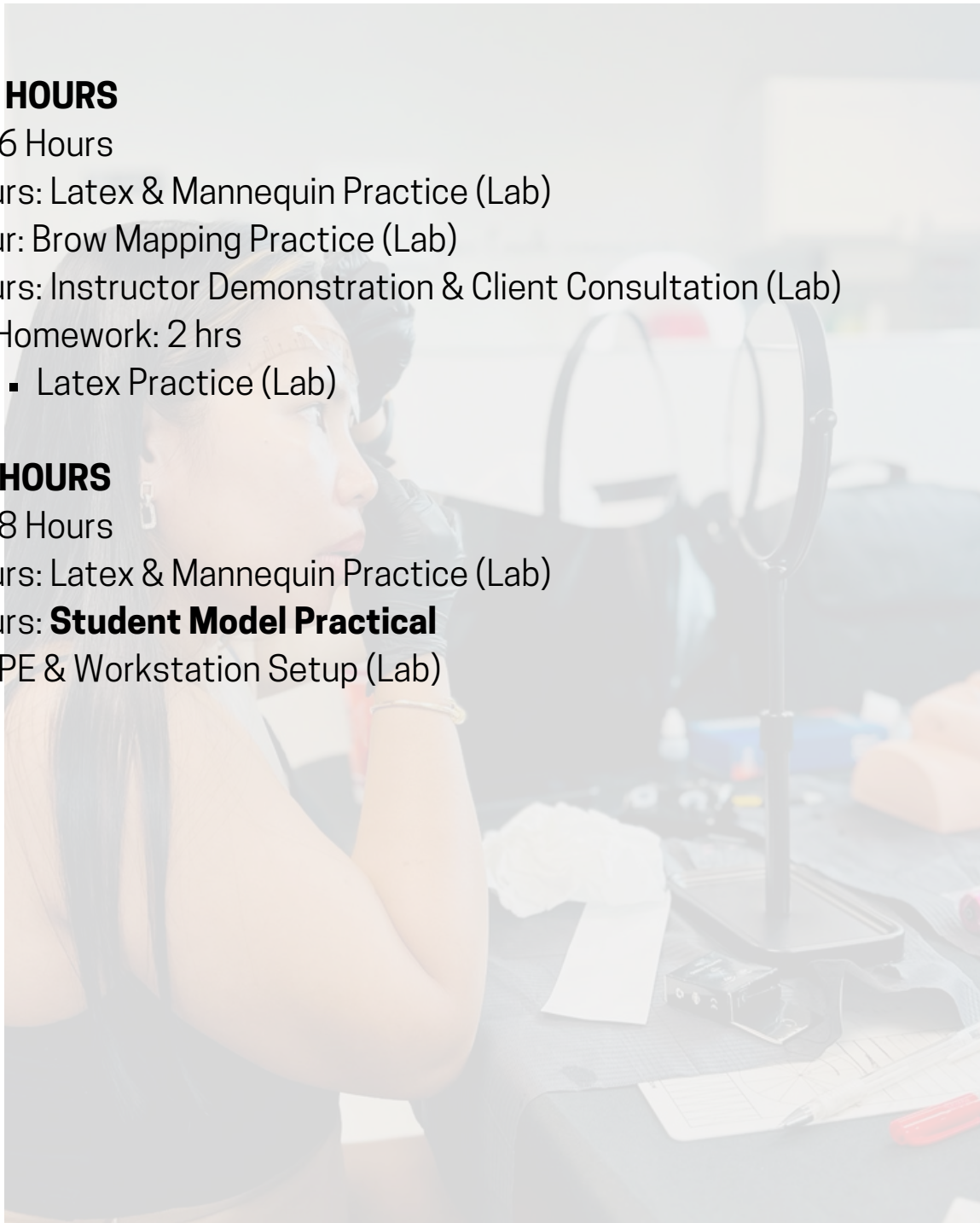
In Class: 6 Hours

- 2 Hours: Latex & Mannequin Practice (Lab)
- 1 Hour: Brow Mapping Practice (Lab)
- 3 Hours: Instructor Demonstration & Client Consultation (Lab)
  - Homework: 2 hrs
    - Latex Practice (Lab)

## DAY 3: 8 HOURS

In Class: 8 Hours

- 4 Hours: Latex & Mannequin Practice (Lab)
- 4 Hours: **Student Model Practical**
  - PPE & Workstation Setup (Lab)



# TUITION

## **100HR AAM PERMANENT BROWS CERTIFICATE PROGRAM**

Registration Fee \$125.00

Tuition \$6,674.00

Total Cost \$6799.00

The tuition fee for the 100hr PMU Brows Certification is \$6799.00. A student kit including a tattoo machine, pigments, training book, guides, disposables, needles, etc. are included.

### **Additional Fees or Expenses**

Students wishing to sit for the AAM Board Examination will assume an exam fee of \$397. Liability insurance will be required and will vary between \$500-900 annually.

A \$100 model deposit is required for the model component of the program. This deposit is separate from tuition and other fees. The deposit will be refunded within 7 days after the appointment has been completed. Deposits are non-refundable for no-shows or cancellations made within 72 hours of the scheduled appointment.

## **50HR POWDER OMBRE & COMBO BROWS CERTIFICATE PROGRAM**

Registration Fee \$125.00

Tuition \$3999.00

Total Cost \$4124.00

The tuition fee for the 50hr Powder Ombre & Combo Brows Certificate Program is \$4124. A student kit including a tattoo machine, pigments, training book, guides, disposables, needles, etc. are included.

# TUITION

## **Additional Fees or Expenses**

Models during the apprenticeship component will incur an additional expense of \$100 per model to be paid at the time of scheduling. This fee is nonrefundable. Liability insurance will be required for each student and will vary between \$500-900 annually.

## **30 HR FUNDAMENTALS OF PERMANENT MAKEUP BROWS CERTIFICATE PROGRAM**

Registration Fee \$125.00

Tuition \$3299.00

Total Cost \$3424.00

The tuition fee for the Fundamentals of PMU Brows Certificate Program is \$3424. A student kit including a tattoo machine, pigments, numbing solution, training book, guides, disposables, needles, etc. are included.