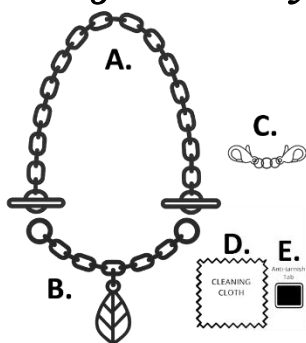


## ChangeOut Jewelry



Our Jewelry System was created to bring confidence, comfort, and customization to everyone - including those living with Arthritis, dexterity or mobility limitations.

**Your Jewelry. Your Way. Finally.**

Each ChangeOut Jewelry package includes:

- A. Main Chain** (22 inches, toggle bar ends)
- B. ChangeOut Pendant -or- Clip Pendant Chain** (toggle rings)
- C. Style Set Connector** (optional use)
- D. Polishing Cloth**
- E. Anti-Tarnish Tab**
- **Resealable Storage Bag**

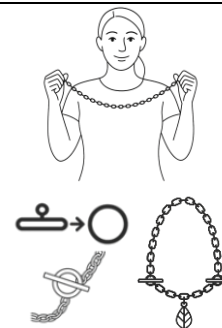
### Putting on Your ChangeOut Chain + Pendant

#### STEP 1: The Main Chain (Long): *No reaching required*

- a. Hold one toggle bar in each hand.
- b. Tuck elbows in; then, raise hands towards face (about shoulder height).
- c. Swing the chain over your head.

#### STEP 2: Connect to Pendant Chain (Short): *Easy Front Closure – No Clasps*

Attach ChangeOut Pendant or Clip Pendant: Insert Main Chain toggle bars through Pendant toggle rings at each end. You're Done!

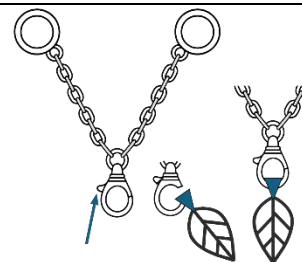


#### Purchased our Clip Pendant to *wear your own pendants?*

1. Open clip: Find the **small lever** near the top of clip.
2. Push the spring-action lever **upwards to open**.
3. Slide your pendant's bail (or loop) onto the ring.
4. Release the lever to close securely.

The Clip fits pendant bales up to approximately ¼ inch wide.

💡 Tip: Wide bale? Slide bale onto clip at the narrow end of bale.



#### Style Set Connector (Optional Use) – Video at website.

**Adjust the chain** by moving the connector. Lobster claws connect into the chain links.

- Connector set **closer** to the toggle bars = **shorter** necklace length.
- Connect set **farther** from the toggle bars = **longer** necklace length.

#### To Attach:

1. Fold the chain in half, aligning the toggle bars.
  2. Pinch both sides at your desired length.
  3. Clip each lobster claw into a chain link at pinch point - one on each side.
- 💡 Tip: Ensure both claws are attached evenly, the same distance from each toggle bar.
- Choker Length (16" chain) place connector 6.5+/- inches from toggles.
  - Princess Length (18" chain) place connector 7.5+/- inches from toggles.

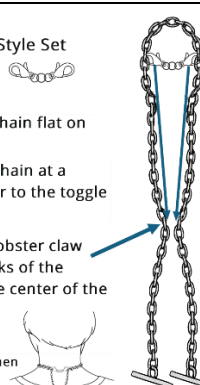
Using the Style Set Connector (Shorten)

Lay Main Chain flat on table.

Pinch the chain at a point closer to the toggle bars.

Move the lobster claw clasp to links of the chain in the center of the pinch

Back View when Complete



#### Caring for Your Jewelry

- **To Clean:** Use the included microfiber polishing cloth to gently wipe areas that contact skin. Also use to polish pendant, toggle bars, and rings.
- **Avoid:** *Submerging in water or using chemicals cleaners.*
- **To Store:** Place jewelry, polishing cloth, and anti-tarnish tab back into the resealable bag.

