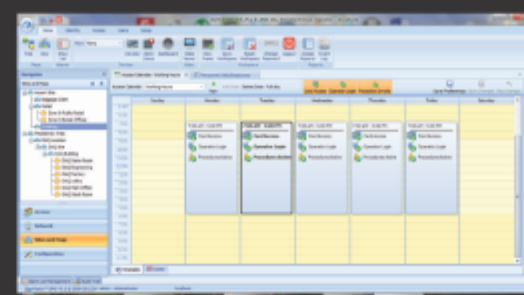


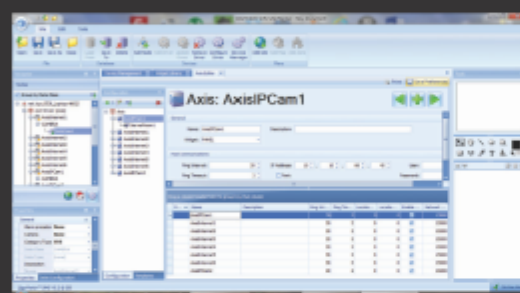
OSIM

OSIM

Details



i Calendar Based System Access Management



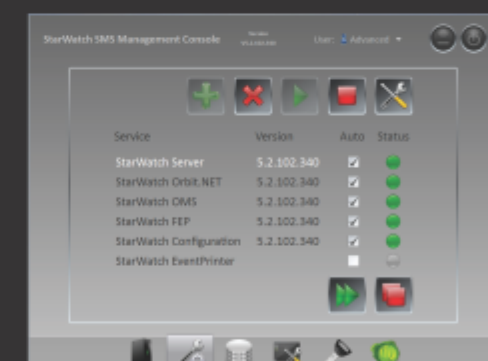
i Integrated Camera Management, Viewing, and PTZ Control



i Photo Based Credential Management



i Intuitive Site Planner with Real Time Visual System Notifications



i Simplified Administrator Console

OPEN SECURITY INTEGRATION
AND MANAGEMENT

Security 2000, LLC
40 Route 36
Suite 3
West Long Branch, NJ 07764

113 Regent Ct
Clayton, NC 27527

P (732) 280-6540
F (732) 903-2159
www.security2k.com

Security
2000

CALL
(732) 280-6540
FOR A
FREE SYSTEM
ASSESSMENT



OSIM is unlike anything previously available to ICIDS stakeholders

Security 2000 is pleased to present and demonstrate a security integration program unlike anything previously available to ICIDS stakeholders – the S2k Open Security Integration and Management Program, or OSIM. Specifically, OSIM will demonstrate a customized solution capable of integrating nearly any contemporary third party CCTV and Access Control system with a new, state-of-the-art ICIDS software platform.

Single point of interface

Without changing any hardware in most circumstances, OSIM will give system operators and administrators a single point of interface to what will be a truly integrated system – ICIDS, CCTV, and Access Control operation and administration from a single piece of software. There is no longer a reason for multiple standalone systems. There is no longer a reason to train and continually educate a staff on multiple software platforms. And there is no reason you cannot continue to utilize hardware that you have already paid for and deployed on a large scale.

Scalability

Due to the unparalleled scalable nature of the program, OSIM can be installed on a modular basis or as a full system upgrade. What this means is that budgetary, infrastructure, or bureaucratic constraints do not have to negatively influence the implementation of this program – it can be implemented at a gradual pace if necessary. This is due to the ability of the OSIM software platform to communicate with older ICIDS software platforms already in place. For example – OSIM can be implemented within a SCIF; the SCIF CCTV, IDS, and Access Control systems can take advantage of the advanced integration capabilities of OSIM while reporting system conditions to an ICIDS III or IV based front-end monitoring center. With this approach, a full upgrade program can be planned, budgeted, and rolled out in a much more controllable and fluid manner.



OSIM Features

- Dynamic GUI interface
- Intuitive navigation of information
- Automated decision making capabilities
- Real-time views with overlay capabilities
- Direct compatibility with third party cameras, radars, and CBRNE sensors
- GIS-based graphics
- Supports the latest CAC and biometric technologies
- PTZ camera control, sequencing, and queue/slew/alert/view capabilities



The most advanced and streamlined approach to security systems integration

The S2k OSIM Program is designed to meet or exceed all applicable sections of ICS 705 and FIPS 201 to include the utilization of CAC technology as an Access Control credential. S2k has worked in conjunction with DAQ, the manufacturers of ICIDS hardware and software, in fielding this cutting edge software suite since the inaugural release earlier this year, and we continue this relationship in efforts to create the most advanced and streamlined approach to security systems integration on the market today. Most poignantly stated, Security 2000 possesses the relationships and subject matter expertise to change the S2k OSIM Program objectives as quickly as required by our client. As new technology becomes available and when new threats become apparent, the S2k OSIM Program is right in step. The S2k OSIM Program is the most advanced and flexible security integration solution available to ICIDS based physical security programs today.