

“Paperless Cockpit”

The point of this seminar is:

ForeFlight is unique in letting you BOTH

- **Upload your own PDFs,**
- AND**
- **Also ‘Doodle’ on them**

So anything that you might have ever wanted on paper, can now be here!

Follow up questions? Email me at: **Henry@N78HF.com**



Home Page: **Table of Contents**

NOTES	CRAFT #1	CRAFT #3
Scratchpad	ATIS # 1	ATIS # 2

ST	Identifier	Name	Identifier	Name
IL	KPWK	Chicago Executive	KDKB	DeKalb
	3CK	Lake in the Hills	KMDW	Midway
	KUGN	Waukegan	KRPJ	Rochelle
	KRFD	Rockford	KBMI	Bloomington
	C77	Poplar Grove		/Normal
WI	KSUE	Sturgeon Bay	C02	Grand Geneva
	KBUU	Burlington	KJVL	Janesville
	3D2	Ephraim/Gibraltar	KMSN	Madison
	C59	Lake Lawn	KLNR	Lone Rock
	C35	Reedsburg	KENW	Kenosha
MI	KMCD	Mackinac Island	KGRR	Grand Rapids

IN [\[HOME\]](#) **KSUE** [Sturgeon Bay/ Cherryland](#) [\[HOME\]](#) CTZ

02 | 20 Wind 0

10 - 28 @ Kts

C.R.A.F.T Gusting Visibility 10

On PREVIOUS Page.

1 28.32 BKN OVC **1,700**

920/743-7087

1 22.70 BKN OVC **724**

7 CLICKS FOR RLLS

1 Temp DewPt

1 19.25 Altimeter

Barbara

Jerry S20 snow removal

Cab: 920/818-1124 (\$24 to Scataros; \$65 to Our Spot)

[DownCountyCab@gmail.com](#)

[\[HOME\]](#)

"Next Page" for KSUE

NOTES

To set Time on the JPI:

- Power EDM up and the self-test; when asked to fill fuel tap step button a couple of times to clear it.
- Hold buttons 1 & 2 down until you see **PROGRAM** then release the buttons,
- Tap the STEP or NEXT until you see **Time**.
- For any settings in gray (like Time) you must
 - Hold buttons 1 & 2; Make your edits, then; Hold 1 & 2 down again to save
- Once set tap NEXT until you exit program.

To Lean ROP via the JPI:

A. Be in stable cruise (about 1 minute) and Pre-lean your mixture (about 15 gph?).

B. Tap the LF button (verify ROP appears).

Scratchpad

HOME

LIGHTS

REIL

Gate Codes:

South Gate: 1 2 2 7

North Gate: # 2 5 2 5 (literally include 'w')
FBO Lounge: 1 2 3 4 5 (S. side of Bldg.)

Restaurants in Sturgeon Bay:

- Scataros (Breakfast, Lunch, Bakery)
- Kitty's Irish Pub (Lunch) 59 E Oak St.
- Blue Front Café Cozy spot with an artful ambience serving specialty sandwiches & more. 86 W Maple St.
- DC Fire Company (Sports Bar) 38 S 3rd Ave, Sturgeon Bay.

Ray 02

5 Nm

3,500' MSL

Ray 02

4 Nm

4,500' MSL

Ray 02

4 Nm

4,500' MSL

Ray 02

4 Nm

4,500' MSL

HOME Henry@N78HF.com

Using basic WORD and a few 'transfer to iPad' tricks, you can create a complete suite of personalized crib sheets, a dossier of your airports, and just about anything else you want.

Like having a full color notebook with all the pages of information you want, but with none of the paper hassle!

Spoiler alert:
This is as simple as:

- **Create whatever Doc you want in Word** (*with tables, pictures, website links, anything!*)
- **Do a “Save As”** to a free “DropBox Folder” on your PC.
- **Automatically** (or manually) **upload file(s)** to your ForeFlight Documents Binder.

Some sample pages that I have...

[HOME] KSUE Sturgeon Bay/ Cherryland CTZ		
02 20 <small>PAPI</small> 4,600 x 75 <small>PAPI</small> <small>RLLS</small> Miri ---		Wind 0 @ Kts
10 - 28 <small>PAPI</small> 3,200 x 75 <small>PAPI</small> --- Miri ---		
C.R.A.F.T On PREVIOUS Page.		Gusting Visibility 10 5 Snow Fog Haze Rain
1 28.32 920/743-7087	BKN OVC Few SCT , 00'	Pattern 1,700 Elevation 724
1 22.70 7 CLICKS FOR RLLS	BKN OVC Few SCT , 00'	Density Altitude
GROUND 1 -----	Temp DewPt	INFORMATION
CLEAR 1 19.25	Altimeter 29 30	Barbara Jerry \$20 snow removal Cab: 920/818-1124 (\$24 to Scaturus; \$65 to Our Spot) DoorCountyCab@gmail.com [HOME]

I make one of these for every airport I go to...

To add a new airport, I just Copy/Paste the last, blank page, and fill in the blanks with new values.

Some sample pages that I have...

FFM Airport-ATIS_CRAFT.pdf

[HOME] Cleared To: **CRAFT (#1)** 1 [HOME]

	AF	via	Fly	Or	Deg
	RV		Rwy Hdg		Upon Entering Controlled Airspace
1 PMPKN			6	COMP	
2 NEATO					DIRECT
3 DLLAN					
4 RONIS					
5 BAE					
		Climb	2	Expect	5 10 15
			3	4	,000'
		Freq	120.55	125.00	
		1			
		Squawk			
Void	Released (immediate)	Void	If not off by	Airport	
advise if not off by		Time is NOW:		Runway [HOME]	

16 of 65

I never liked anyone else's CRAFT, so I designed my own!

And since I fly out of my home PWK airport a lot, I have my home frequencies and common Clearance 'suggestions' typed in.

AND! (since there is no cost regardless of how many pages I have), I will have a 'customized' CRAFT for each of the 3-4 airports I frequently fly out of, if they have 'common' clearances!

Some sample pages that I have...

The screenshot shows a flight information page titled "CRAFT (KSUE- KPWK)". It includes fields for "Cleared To:", "AF", "RV", "Fly", "Rwy Hdg", "Or", "Deg", "Expect", "Freq", "Squawk", "Airport", "Runway", and "Time is NOW!". A blue cloud annotation points to the "Expect" field, stating: "A special CRAFT from UNControlled KSUE inserted next to my KSUE ATIS". A red arrow points to the "Freq" field, which displays "119.25 GB". Another red arrow points to the "Airport" field, which displays "KSUE". A third red arrow points to the "Runway" field, which displays "28" and "20". A red double-headed arrow is on the left side of the page. The page number "23 of 65" is at the bottom.

[HOME] Cleared To:		CRAFT (KSUE- KPWK)		[HOME]	
AF		via		Fly	
RV				Or	
Rwy Hdg				Deg	
1 OBK		6		DIRECT	
4		2		Expect 5 10 15	
5		3		,000'	
		Freq		119.25 GB	
		Squawk			
Void Released (immediate)		Void if not off by		Airport KSUE	
advise if not off by		Time is NOW:		Runway 28 20	
		23 of 65		[HOME]	

For CRAFT departures from UN-controlled airports, my CRAFT has more space for "VOID TIMES"

And since I frequently fly from KSUE back home, I have those values in a separate CRAFT that I keep on the 'next page' from my KSUE ATIS!

(You can always "pinch-and-stretch" to enlarge any section!)

Some sample pages that I have...

NOTES

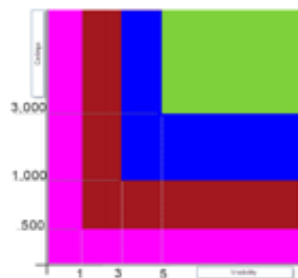
[NOTES]

Lost Communications: 7600; Depart Hold at time specified

FPM = **FPM x 60 / Kts** Kts is Ground Speed. IAS is conservative surrogate
 = FPM x 60 / 96 V_x is 96 Kts
 = FPM x 0.63 ~ **FPM x 0.6** ~ 2/3rds of FPM

Ft/Nm:		
	Ground Speed	
	96 Kts	115 Kts
500 fpm	310	260
800 fpm	500	415

	Ceiling	Visibility
VFR	>3,000'	5+
MVFR	1-3,000	3-5
SVFR	Clear of	1+
IFR	500-1k	1-3
LIFR	<500	0-1
Alternate: if Primary TAF is ± 1 Hr, < 2K' AGL ceilings or < 3sm vis Alternate TAF must have : 600' ceilings for ILS, 800 otherwise		



TAFs are good for a 5nm radius surrounding the airport, and are updated every 6 hours, and are valid for 24 hrs.

ICING: trace: ¼" > 60 min; Light in 15-60, Moderate in 5-15; Heavy < 5 min

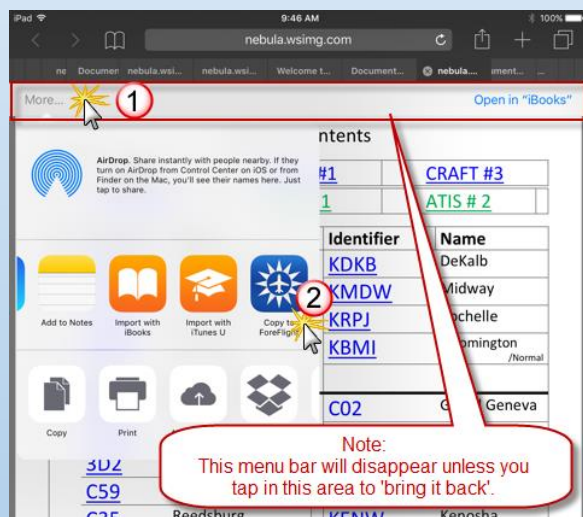
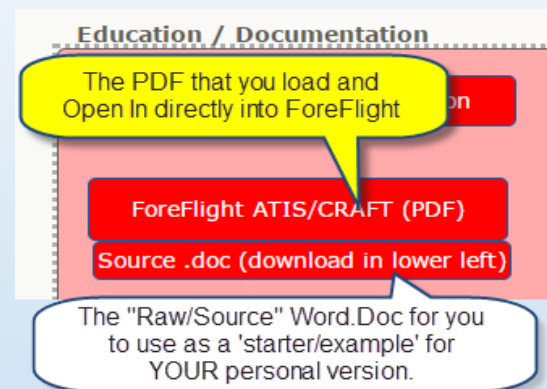
Light Gun Signals	In the Air	On the Ground
Steady Green	Cleared to Land	Cleared for TakeOff
Flashing Green	Return for Landing	Cleared for Taxi
Steady Red	Give way and Circle	STOP
Flashing Red	DO NOT LAND	Taxi Clear of Runway in use
Flashing WHITE	n/a	Return to starting point
Red/Green	EXTREME CAUTION	EXTREME CAUTION

And then there's all the things that I oughta remember (like setting time on my JPI, light gun signals, etc.), but that I just plain old tend to forget, I must confess.

But now I have a 'cheat sheet' of everything I might want, built into this docu!

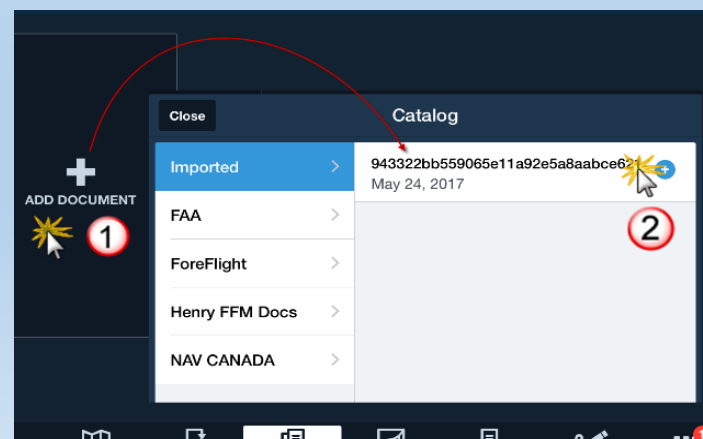
Try this out on your iPad!

For a quick preview, start by using *my* PDF:
Go to www.N78HF.com , then **Documents**
(It's a Blue button on top right of the Home page...)
then open the **PDF** as shown. →



← When the PDF opens, tap where the document says “Table of Contents” and a menu bar will appear! Then Tap **MORE..** in the upper left corner, and swipe the top row of options to find **Copy to ForeFlight**

In ForeFlight, tap on
“**ADD DOCUMENT**” and
select this from **IMPORTED** →



Ok, Lets try it on the iPad...



Some quick Word “Tips and Tricks”:

**Bookmarks and
Hyperlink** (that take you TO those bookmarks!)

To insert a new Bookmark:

Note that Bookmarks cannot start with a number, so put a K in front of every airport even if it doesn't need one

Click Bookmark
(may have to widen the screen to have this button shown on its own)

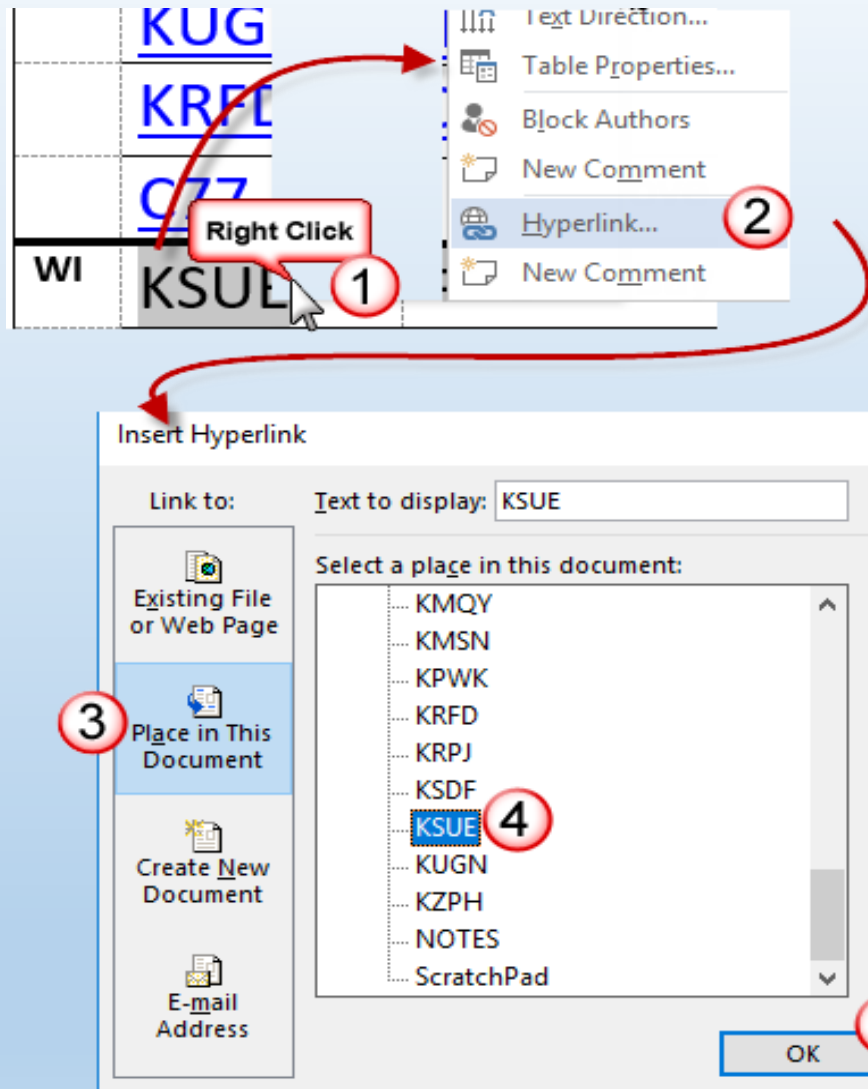
Click
Where you want the Bookmark to be inserted..

Bookmark name:
KSUE

Add

(This is a confusing part)
JUST START TYPING to clear a space for your new 'bookmark name'

Inserting the
Hyperlink to jump
to that Bookmark is
even easier...

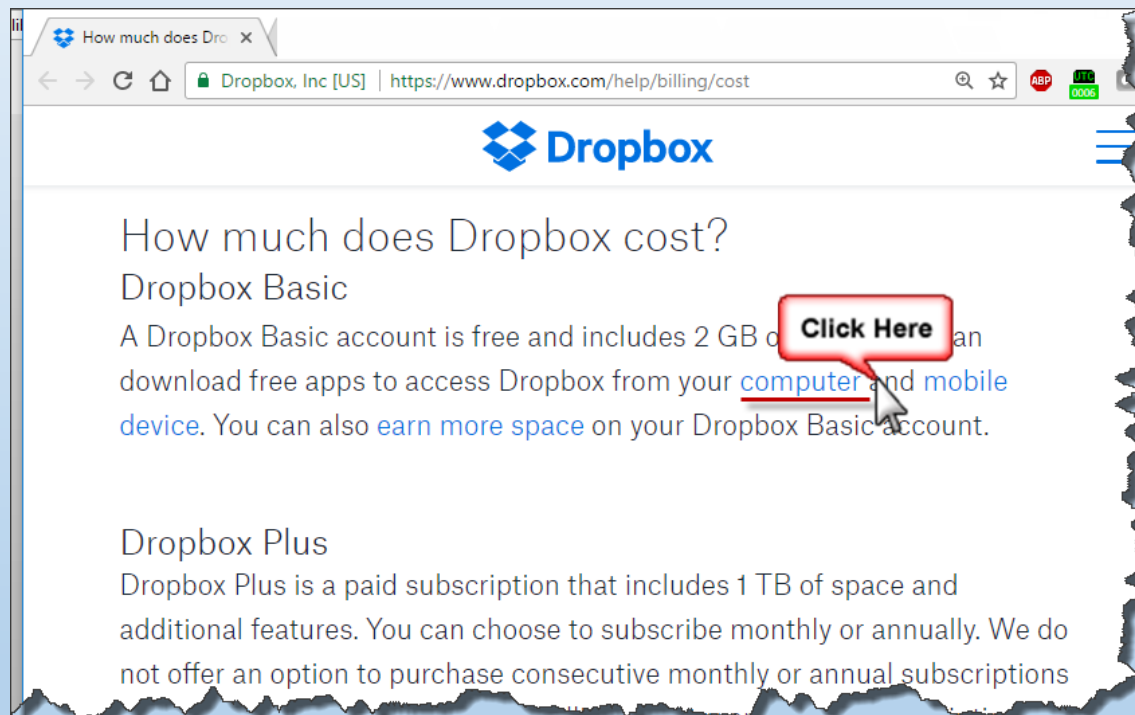


Some mechanics to implement...

- DropBox
- ForeFlight (*configurations*)



- Go to <https://www.dropbox.com/help/billing/cost>



Download, and
Install on your PC.

Warning: Dropbox sells 'for a price' similar service, but for what you need, be sure to use the FREE version!

If you do NOT have FF ProPlus

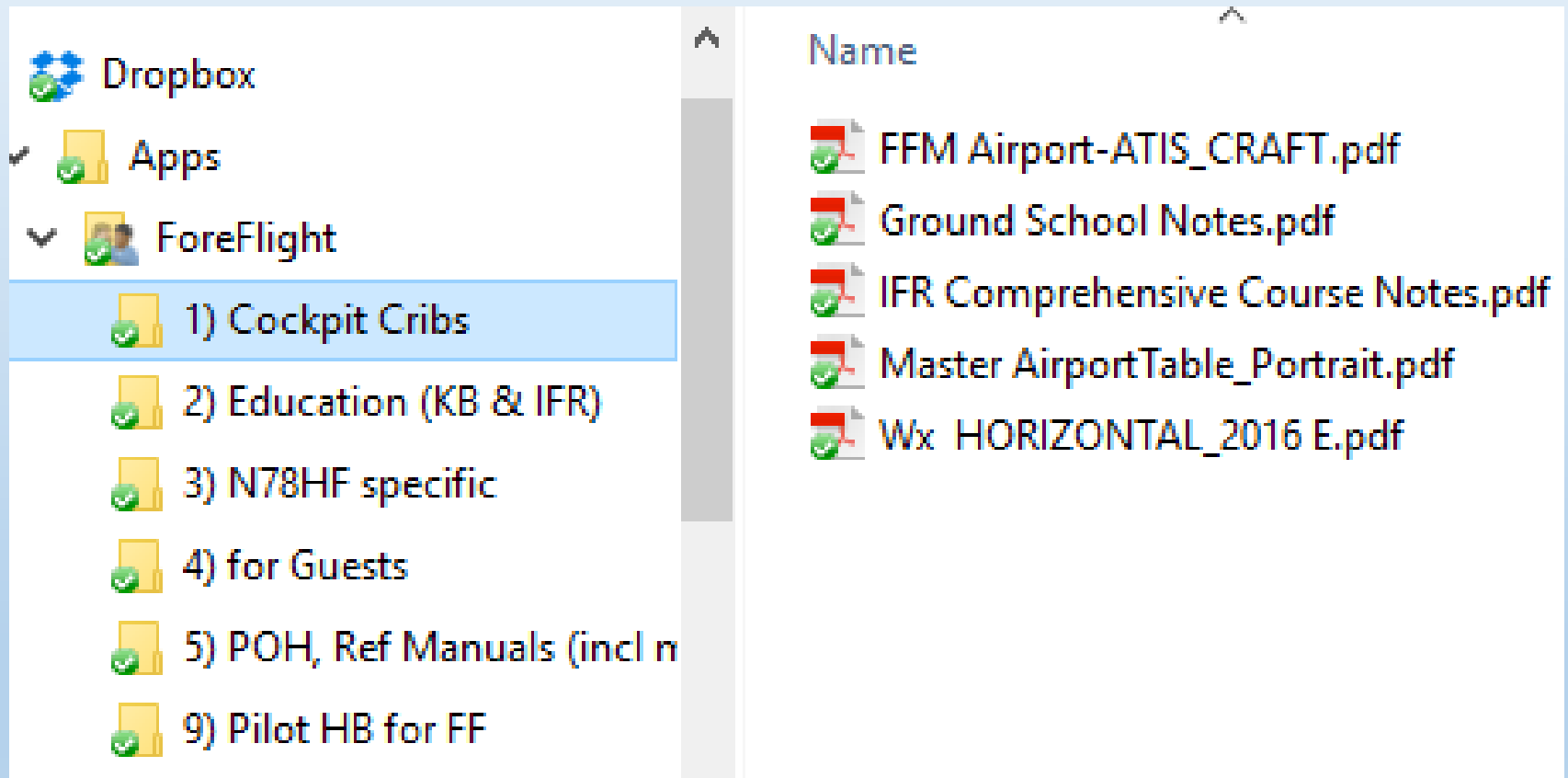
You can still do all this, but the following automatic syncing via ForeFlight will have to instead be done manually via a Drop Box that you install on your iPad

We don't discuss this here at the moment, but it's pretty straightforward. Start by downloading DropBox from the AppStore on your iPad..

(You open the PDF in the iPad DropBox, and then do an Open In... to ForeFlight)

Hint:

Set up your DB folders on your PC to match your ForeFlight Binders



The screenshot shows a Windows File Explorer window. The left sidebar displays the navigation pane with the following structure:

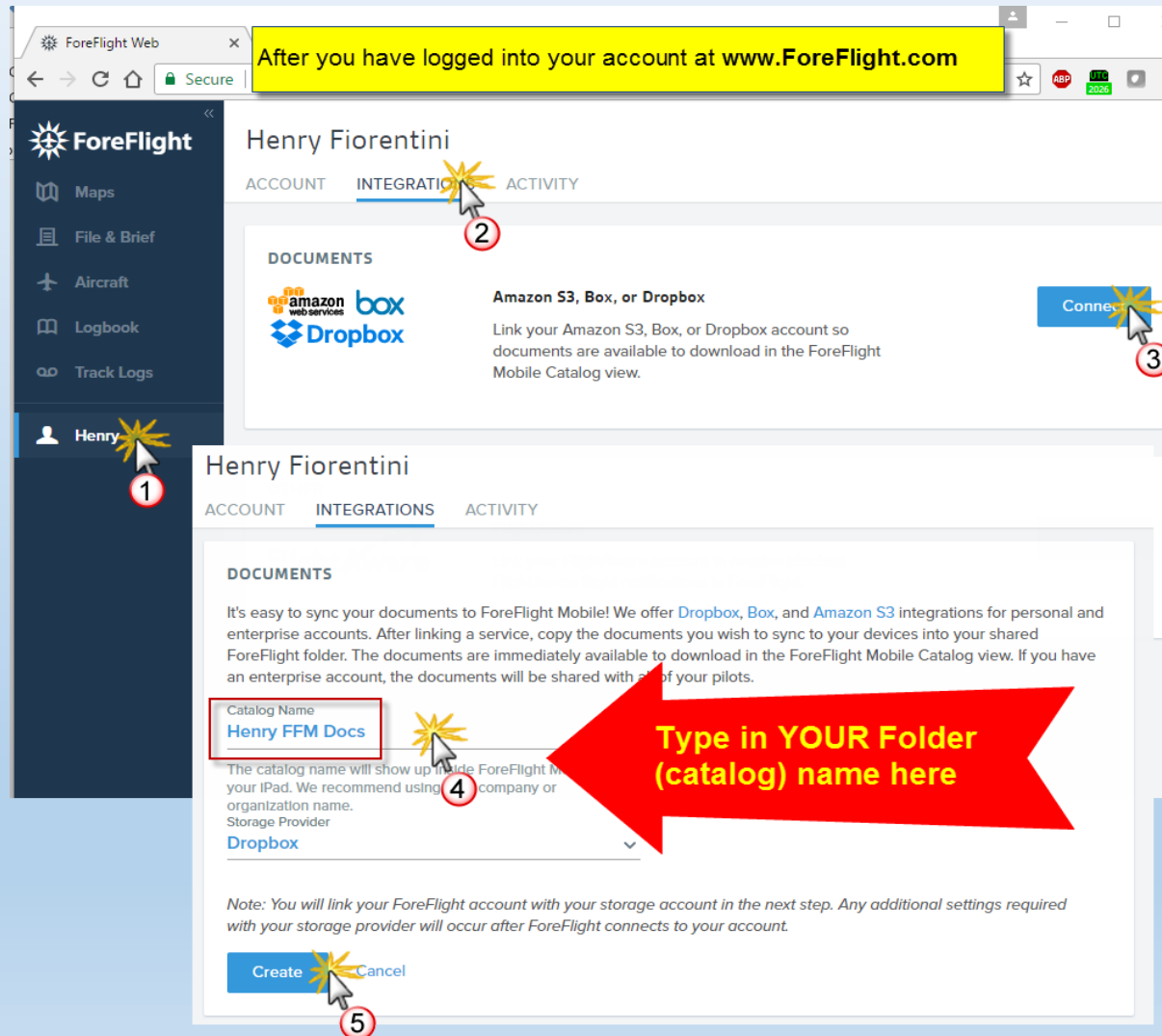
- Dropbox
- Apps
- ForeFlight
 - 1) Cockpit Crib (highlighted)
 - 2) Education (KB & IFR)
 - 3) N78HF specific
 - 4) for Guests
 - 5) POH, Ref Manuals (incl n
 - 9) Pilot HB for FF

The main pane shows a list of PDF files under the heading "Name":

- FFM Airport-ATIS_CRAFT.pdf
- Ground School Notes.pdf
- IFR Comprehensive Course Notes.pdf
- Master AirportTable_Portrait.pdf
- Wx HORIZONTAL_2016 E.pdf

Auto-Sync via ForeFlight

(Pro Plus version)



Login to your account at www.ForeFlight.com

Go to your account name,

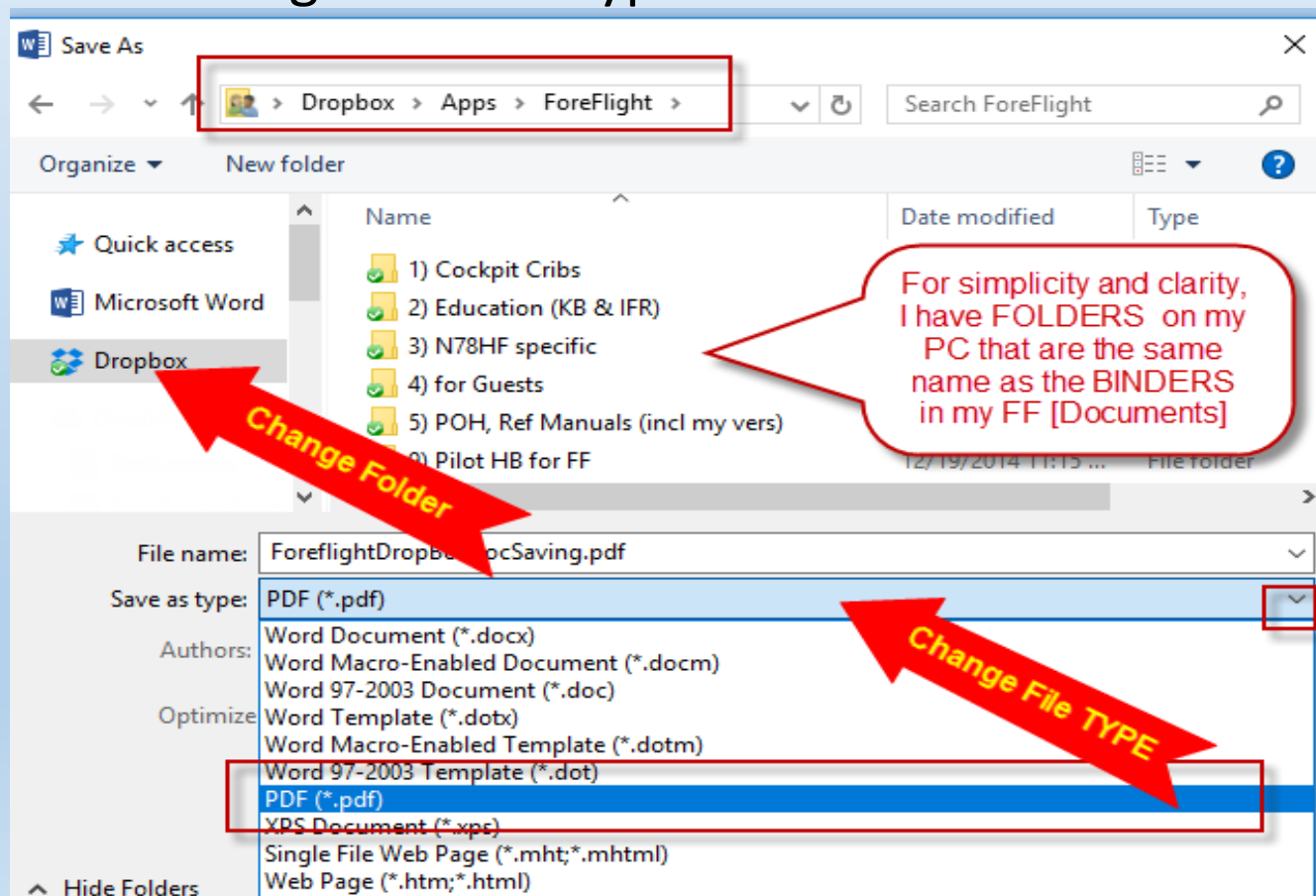
then **Integration** as shown.

The name you pick here (**Henry FFM Docs**) is what will show up as a 'source' of documents when you are in ForeFlight.

Then to make your WORD Doc appear as a PDF on your iPad:

- SaveAs

- To the DROPBOX folder on your C: drive
- And change the File Type from .DOC to .PDF



Then just add it to the appropriate FF Binder

1) Cockpit Cribs

Henry FFM Docs
Smart Binder (47 documents)

1) Cockpit Cribs
5 documents

2) Education (KB & IFR)
0 documents

3) N78HF Specific
0 documents

4) For Guests
0 documents

5) POH, Reference manuals
0 documents

My Documents
0 documents

ADD DOCUMENT

Close

Catalog

Imported

FAA

ForeFlight

Henry FFM Docs

NAV CANADA

1) COCKPIT CRIBS

FFM Airport-ATIS_CRAFT.pdf
Updated May 7, 2017

Ground School Notes.pdf
Updated Mar 25, 2017

IFR Comprehensive Course Notes.pdf
Updated Mar 25, 2017

Master AirportTable_Portrait.pdf
Updated Mar 20, 2017

Wx HORIZONTAL_2016 E.pdf
Updated Mar 20, 2017

2) EDUCATION (KB & IFR)

ASPEN 2017 and ILS Approach.pdf
Updated Mar 15, 2017

ASPEN with ILS Approach.pdf
Updated Mar 16, 2017

Aspen Example - ILS w GPSS and APPR m...
Updated Jan 29, 2017

Your Binder Names are completely independant of everything else.

But it is convenient if you match your **DropBox Folders** to match your **Foreflight Binders**

← Note
Henry FFM Docs

NOTE: If you SaveAs to the same Folder/Binder as a previous version of the PDF file, FF will *automatically* replace the 'old' file with the new version!