

VPH 3-1720

12.4.2017



Portable Screening Buckets

[KBI Website](#)

Dimensions

- A Width 81"
- B Depth 69"
- C Height 55"

Weight

5,400 lbs

For excavators

48,500 - 55,000 lbs

For loaders

26,500 - 35,000 lbs

Hydraulic Flow

40 gpm - continuous flow

Volume ISO/SAE

3.0 yd³ / 3.3 yd³

Screening area

1.7 yd²

Number of axles

3

Blade thickness

16 mm

Blade material

Hardox 500

Blade spacing

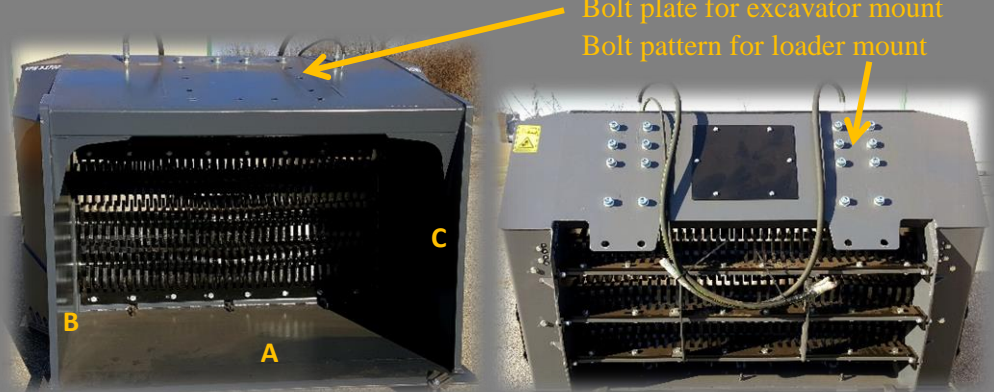
25 mm

Chassis material

100% Hardox construction

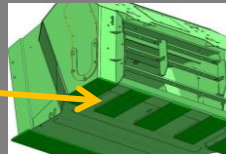
Max Pressure

3,100 Psi

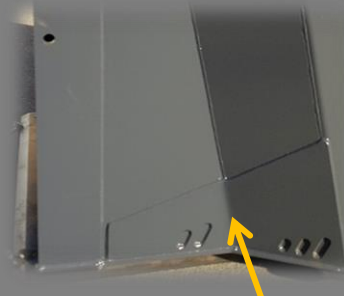


Bolt plate for excavator mount
Bolt pattern for loader mount

- Bolted and changeable bottom wear plates, length 520 mm & 25 mm thick (5 pcs)



-The unique center twin spiral blade design move material sideways; to the center of the bucket and to the side of the bucket when rotating clockwise or counterclockwise



Reinforcement in bucket upper corner
Reinforced side cutting edge to 30 mm thick

New shaping and bigger wear plate on side

* Please note when used with combination machines where back and front attachments are possible the recommended base machine weights can be higher

Main applications

- *topsoil screening / black dirt reclamation
- *pipe back filling
- *foundation back filling

- *producing quality soil and mixed materials
- *composting
- *curb & gutter back filling

- Viper VPH 3-1700PD range includes buckets for 48,500 lb excavators and 26,500 lb loaders



Call Ken Burns Inc
(563) 927-2307
kbiwdc@gmail.com



www.KENBURNSINC.com

Ken Burns Inc
Contact Information

WATCH VIDEOS ON OUR WEBSITE