

# VPH 2-1700 HD

5.6.2025



KBI Website

## Portable Screening Buckets

### Dimensions

A Width 76"  
B Depth 53"  
C Height 45"

### Weight

3,100 lbs

### For excavators

26,500 - 46,000 lbs

### For loaders

15,400 - 26,500 lbs

### Hydraulic Flow

40 gpm - continuous flow

### Volume ISO/SAE

1.5 yd<sup>3</sup>

### Number of axles

2

### Number of motors

2

### Blade material

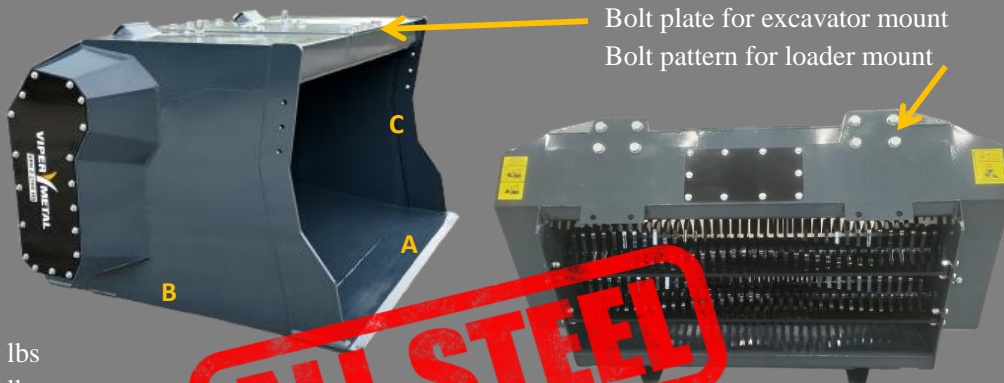
Hardox 500

### Chassis material

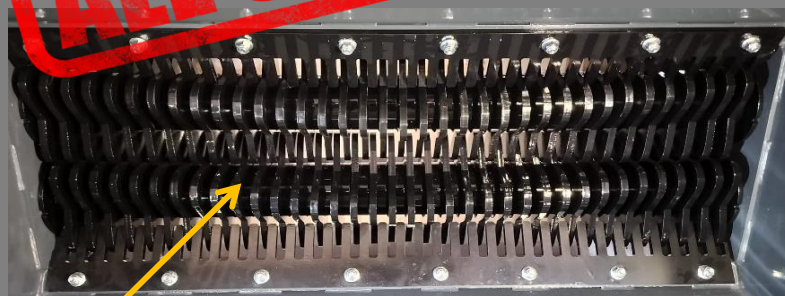
100% Hardox Steel

### Max Pressure

3100 Psi

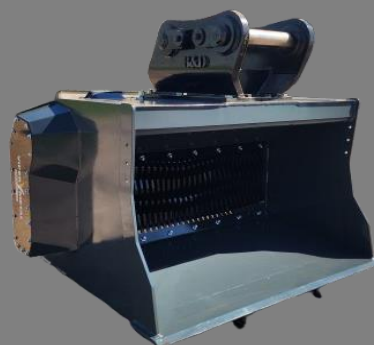


**ALL STEEL**



-The unique center twin spiral blade design move material sideways; to the center of the bucket and to the side of the bucket when rotating clockwise or counterclockwise

\* Please note when used with combination machines where back and front attachments are possible the recommended base machine weights can be higher



### Main applications

- \*topsoil screening / black dirt reclamation
- \*pipe back filling
- \*foundation back filling

- \*producing quality soil and mixed materials
- \*composting
- \*curb & gutter back filling

- Viper VPH 2-1700 HD range includes buckets for 26,500 lb excavators and 16,000 lb loaders

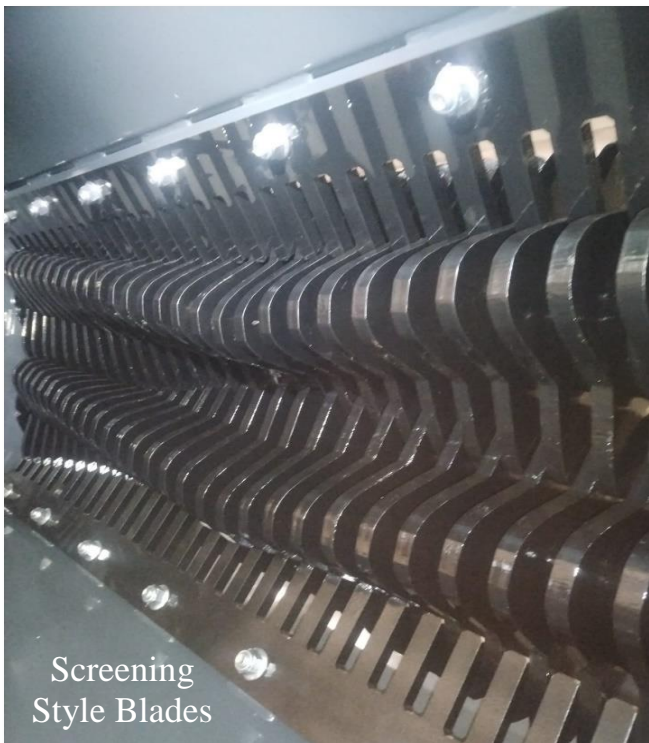
Call Ken Burns Inc  
(563) 927-2307  
kbiwdc@gmail.com



[www.KENBURNSINC.com](http://www.KENBURNSINC.com)

WATCH VIDEOS ON OUR WEBSITE

# VPH 2-1700 HD Pictures



Screening  
Style Blades

