

ADU'S AND TINY HOME COLLECTION



Discover beautifully designed accessory dwelling units (ADUs) and tiny homes in a collection that celebrates the joys of compact living.

Each design not only prioritizes attention to detail but also ensures exceptional energy efficiency and functionality, providing you with a living space that harmonizes seamlessly with modern lifestyles.

We invite you to explore a variety of inspiring options that make cozy, stylish living truly attainable.



HELLO!

Introducing the Eco-Shell framework—a game-changer in construction that brings essential building science principles to the forefront from day one.

Whether you're a DIY enthusiast, a homeowner, or a construction veteran, this user-friendly approach empowers everyone to collaborate seamlessly with contractors to build a top-notch home.

With a solid commitment to durability and "common sense" building practices, we stand as reliable partners in home building—armed not with capes but with a fantastic selection of high-quality materials and proven building sciences designed to create an outstanding building envelope that addresses the most common homeowner concerns.

TABLE OF CONTENTS

02 Table of Contents

04 About US

06 The Woodland

08 Cedar Ridge

10 The Carriage House

12 The Brookstone

14 The Willow

16 What's in our Kits?

18 What is an Eco-shell?

20 Contact Us

ABOUT US

We pride ourselves on our straightforward motto: "A great product for a great price." Sure, we can discuss high-end options and dive deep into the technical details (and believe us, we love doing that!). But we find that keeping it simple often works best.

Imagine a building envelope designed to keep your home dry in any weather, cozy in winter, and refreshingly cool in summer—all while enhancing indoor air quality for your family. It's like having your cake and eating it too... except the cake is actually a well-constructed home!

Our Mission

Eco-Shell is committed to transforming housing by empowering consumers and builders to "build differently and build better." Our durable housing solutions enhance quality of life without sacrificing comfort or style. We create homes that promote health and sustainability by combining practical building knowledge with innovative building science. We here at Eco-Shell believe everyone deserves a home that reflects their values and are dedicated to making that vision a reality.

All Eco-Shell ADUs are designed to maximize every inch of space with intelligent design—think multifunctional furniture and open layouts that make even smaller units feel spacious and inviting.

HOW IT WORKS

WHAT IS AN ADU?

Welcome to the exciting world of Accessory Dwelling Units (ADUs)! Have you ever thought about transforming your property into a flexible living space that adds value and solves housing challenges? An ADU could be just what you need—a charming guesthouse, a cozy basement apartment, or even a stylish converted garage.

ADUs are becoming increasingly popular in urban areas for a reason: they offer affordable living options for families, seniors, and renters alike. They're not just a trend; they're a smart way to enhance your living space and increase your property's value!

Why Consider an ADU?

First, investing in an ADU can significantly boost your property's resale value. Future buyers love the flexible living arrangements that ADUs provide, making them a sought-after feature. Plus, they can be a fantastic financial move—think of the return on investment!

Need a little extra income? Renting out your ADU can be a dependable source of cash flow, helping you cover expenses like your mortgage. And if you have family nearby, ADUs are perfect for multigenerational living. They allow aging parents or young adults coming back home to enjoy their independence while being nearby.

In short, ADUs are a brilliant investment in your future. They boost property value, generate income, and offer flexibility for family dynamics. Whether you're creating space for loved ones or exploring rental opportunities, ADUs are a fantastic option to consider!

THE WOODLAND RETREAT

Total House Square feet: 880



Coming Soon!



Details

Heated SQ FT:		Features		Specs	
Total Heated SQ FT:	880	Bedrooms:	1	Total Width:	30'-0"
First Floor:	560	Bathrooms:	1.5	Total Depth:	28'-0"
Second Floor:	329	Levels	2	Total Height:	21'-4"
Unheated SQ FT				Foundation Type:	Slab
				Main Roof Pitch:	2.12
				Ceiling Height:	9'-4"
Deck:	336				



Introducing the Woodland Retreat, an inviting two-story Accessory Dwelling Unit (ADU) that offers a thoughtfully designed 880 square feet of living space.

The first floor features a cozy living room that seamlessly connects to the kitchen and dining area, and a laundry room. Upstairs, you'll find a loft bedroom overlooking the living area and a full bathroom. This upper level serves as a perfect retreat for guests or can be transformed into a peaceful home office. It also opens to a balcony, providing an ideal outdoor space to unwind and enjoy the fresh air.

Whether you envision hosting friends and family or are seeking an attractive rental opportunity, this space adapts effortlessly to your needs.



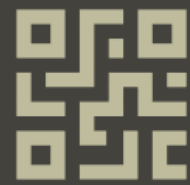
FIRST FLOOR PLAN



SECOND FLOOR PLAN

CEDAR RIDGE

Total House Square feet: 880

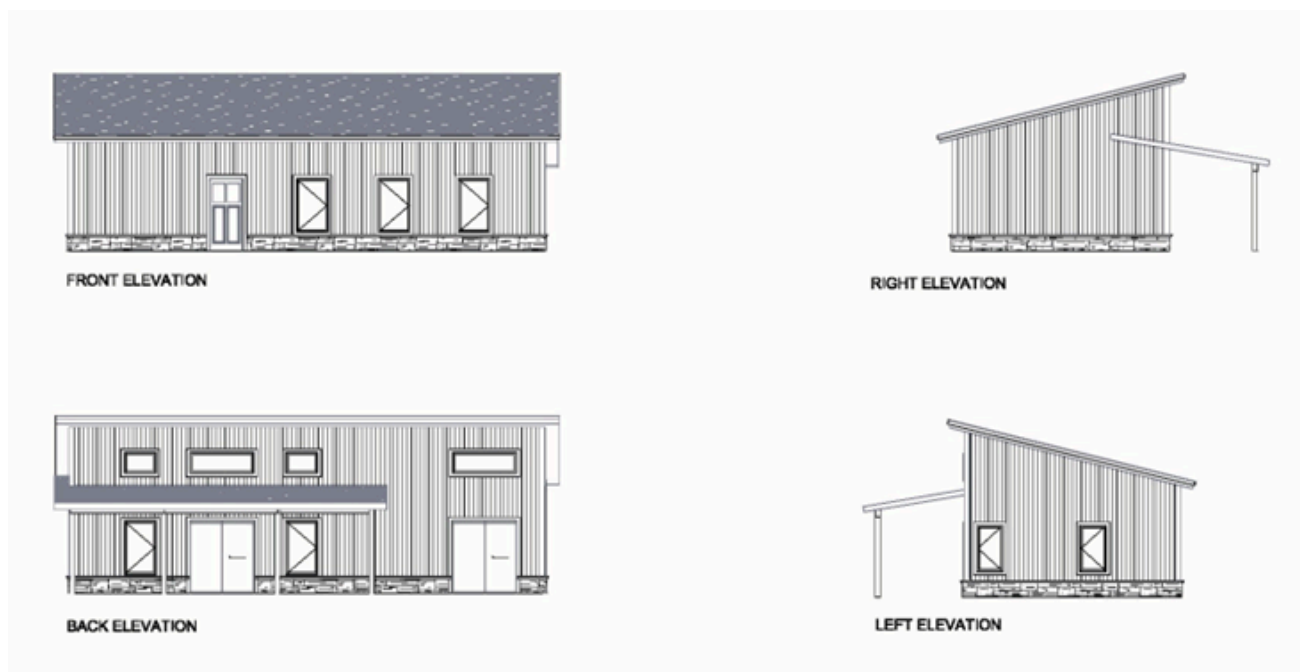


Coming Soon!



Details

Heated SQ FT:		Features		Specs	
Total Heated SQ FT:	880	Bedrooms:	1	Total Width:	44'-0"
First Floor:	560	Bathrooms:	1	Total Depth:	28'-0"
		Levels	1	Total Height:	15'-4"
Unheated SQ FT				Foundation Type:	Slab
Deck:	336			Main Roof Pitch:	3.12
				Ceiling Height:	9'-4"



Discover Cedar Ridge, an enchanting single-story ADU that perfectly blends modern comfort and charm. With 880 heated square feet, this home features high ceilings that create an expansive feel. Relax in the spacious bedroom with a luxurious walk-in closet, and enjoy the convenience of a full bathroom.

The inviting eat-in kitchen is a chef's delight, seamlessly flowing into a cozy living room—perfect for entertaining or unwinding after a long day. Step outside to your impressive 224 square-foot covered deck, ideal for morning coffee or evening gatherings under the stars.

Cedar Ridge is not just a home; it's your personal oasis waiting to be enjoyed!



MAIN FLOOR PLAN

THE CARRIAGE HOUSE

Total House Square feet: 800

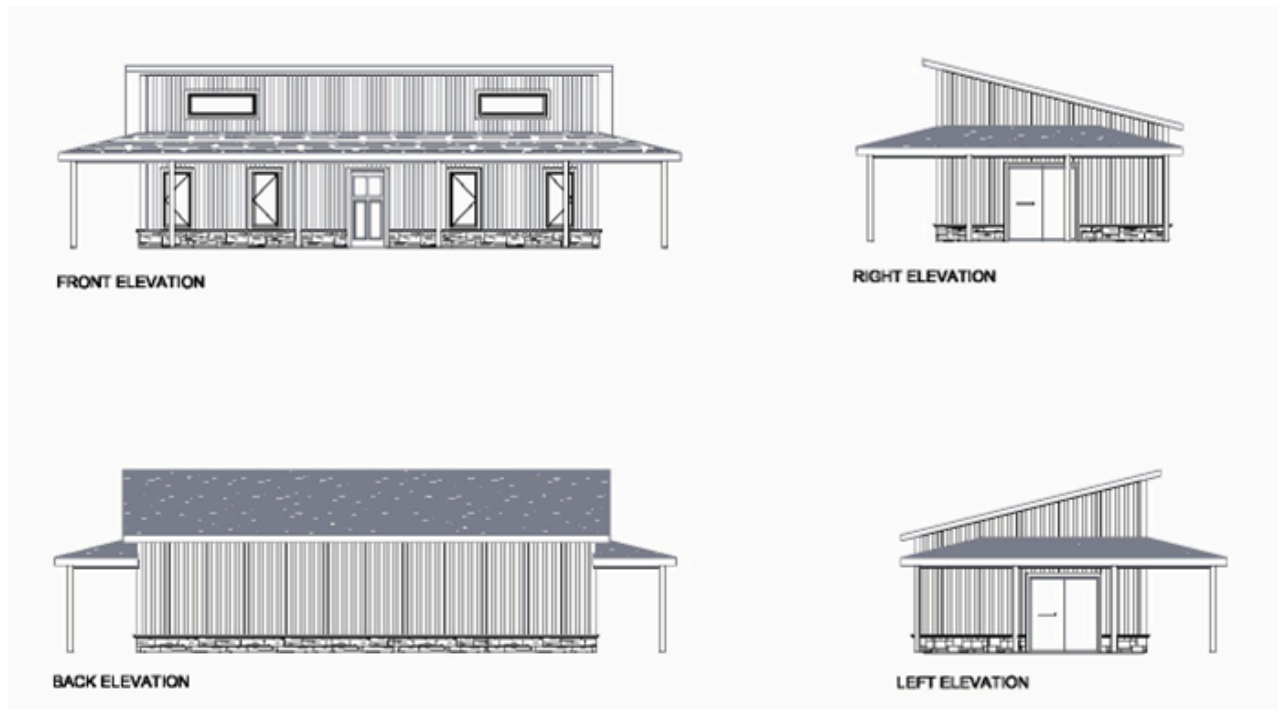


Coming Soon!



Details

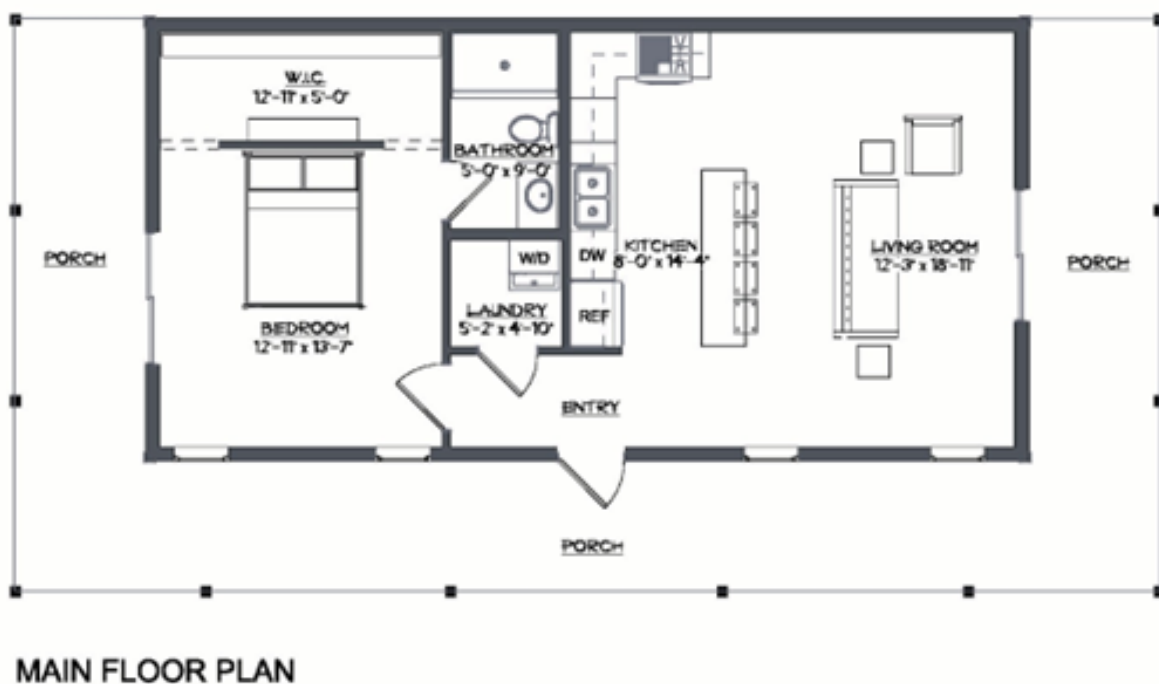
Heated SQ FT:		Features		Specs	
Total Heated SQ FT:	800	Bedrooms:	1	Total Width:	52'-0"
First Floor:	880	Bathrooms:	1	Total Depth:	26'-0"
		Levels	1	Total Height:	15'-2"
Unheated SQ FT				Foundation Type:	Slab
Deck:	552			Main Roof Pitch:	3.12
				Ceiling Height:	9'-4"



Welcome to The Carriage House, a charming single-story ADU designed for modern living. With 800 heated square feet, this cozy haven features soaring high ceilings that create an open atmosphere. The spacious bedroom offers a large walk-in closet, providing ample storage for all your needs. The thoughtfully designed eat-in kitchen makes meal prep a joy, while the inviting living room is perfect for relaxing or entertaining guests.

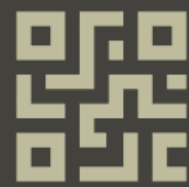
Enjoy the outdoors with the expansive 552-square-foot three-sided covered deck, where you can soak in the beauty of nature and host gatherings year-round. This versatile space seamlessly blends comfort and style, making The Carriage House the perfect retreat for those seeking a peaceful yet vibrant lifestyle.

Don't miss your chance to call this delightful ADU your home!



THE BROOKSTONE

Total House Square feet: 980

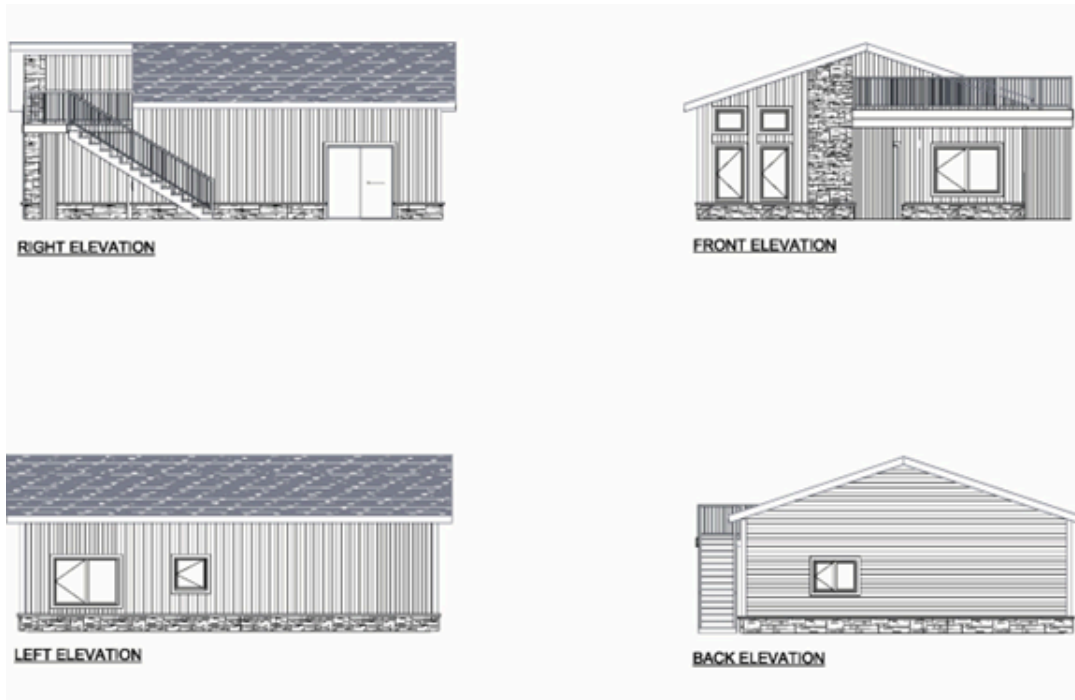


Coming Soon!



Details

Heated SQ FT:		Features		Specs	
Total Heated SQ FT:	980	Bedrooms:	2	Total Width:	32'-0"
First Floor:	980	Bathrooms:	1	Total Depth:	38'-0"
		Levels	1	Total Height:	16'-1"
Unheated SQ FT				Foundation Type:	Slab
Deck:	320			Main Roof Pitch:	6.12
				Ceiling Height:	9'-4"



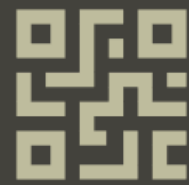
Welcome to Brookstone, a charming single-story ADU that perfectly blends comfort and style in its 980 heated square feet. Boasting high ceilings that create an airy and spacious atmosphere, this well-designed home features two comfortable bedrooms and a fully equipped bathroom. The open-concept eat-in kitchen and living room provide a perfect space to unwind and relax. Step outside to your stunning 320-square-foot covered deck, or take the stairs to the open-air roof deck, perfect for enjoying morning coffee or hosting weekend gatherings. Brookstone offers the ideal balance of modern living and outdoor enjoyment, making it a must-see for anyone looking to create lasting memories in a beautiful, functional space. Don't miss out on the chance to call this lovely home yours!



MAIN FLOOR PLAN

THE WILLOW

Total House Square feet: 572



Coming Soon!

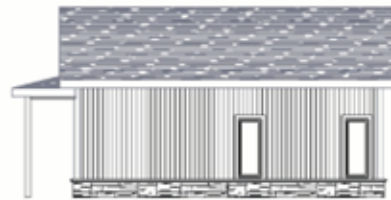


Details

Heated SQ FT:		Features		Specs	
Total Heated SQ FT:	672	Bedrooms:	1	Total Width:	22'-0"
First Floor:	572	Bathrooms:	1	Total Depth:	26'-0"
		Levels	1	Total Height:	16'-3"
Unheated SQ FT				Foundation Type:	Slab
Deck:	200			Main Roof Pitch:	6.12
				Ceiling Height:	9'-4"



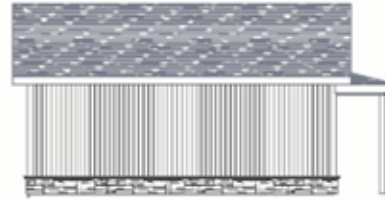
FRONT ELEVATION



RIGHT ELEVATION



BACK ELEVATION



LEFT ELEVATION

Introducing the Willow, a single-story ADU that seamlessly integrates with your main residence, making it seem like a natural extension of your home rather than a jarring structure in the backyard. Spanning 572 heated square feet, it maximizes comfort in a thoughtful design.

Step inside to discover high ceilings that enhance the open feel of the living space. The eat-in kitchen invites cozy meals and entertaining, the open space concept flowing effortlessly into the inviting living room—perfect for relaxation.

Retreat to the spacious bedroom and unwind in the full bath, designed to be your private oasis. But the true highlight? A stunning 200-square-foot deck that extends your living space outdoors, ideal for morning coffees or evening gatherings.

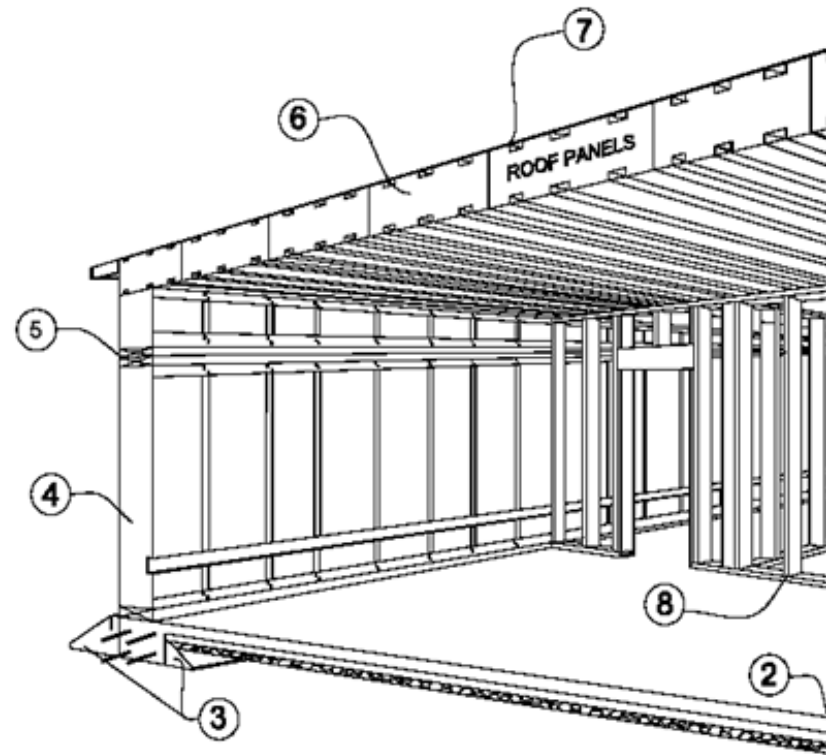
The Willow is not just a home; it's a lifestyle. Embrace the perfect blend of modern convenience and serene living—your dream getaway awaits, designed to harmonize beautifully with your existing home!



MAIN FLOOR PLAN

The Building Blocks: Unpacking My Construction Kit

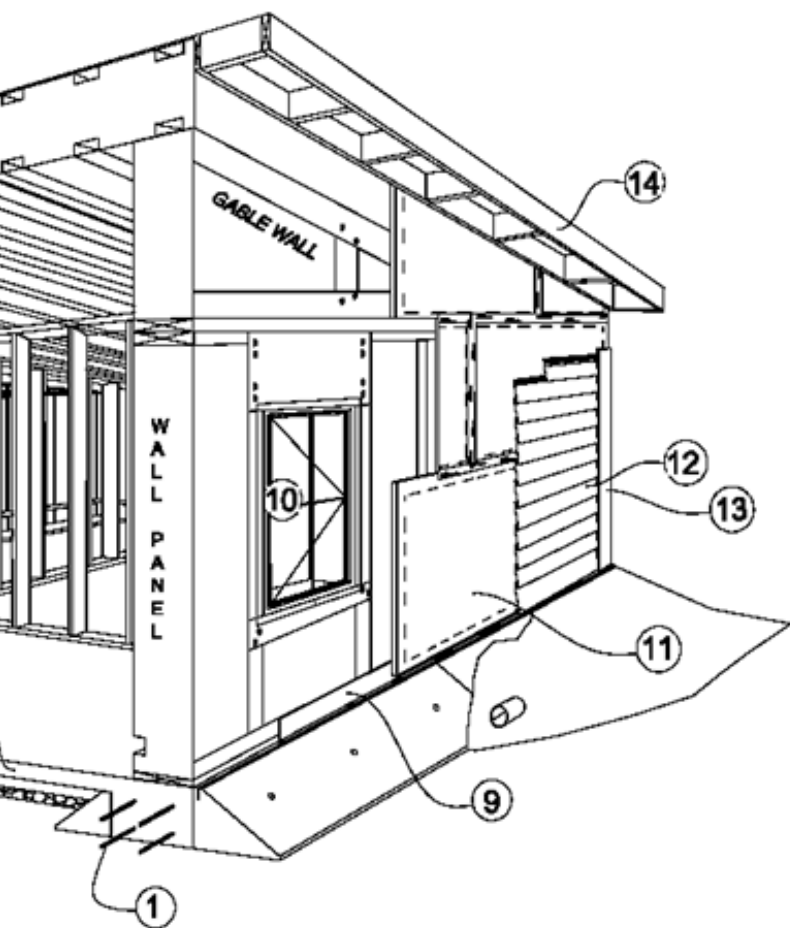
Our basic Eco-Shell package provides everything you need your ADU shell: insulated foundation materials, a wall and roof panel system tough enough to withstand the elements, weather protection barriers, quality interior framing lumber, and premium vinyl siding. Practical, affordable solutions for your home—not your average contractor's toolkit, but definitely a smart choice that can send those common homeowner woes packing! Let's build your dream home together—because who says good design can't be sensible?



Plans, Plans, and More Plans!

- Floorplans
- Elevations
- All Window/Door Schedules
- Roof plan
- Typical framing detail (Floor, Ceiling, etc.)
- All Details needed for Shell
- IECC Chart
- General notes pertaining to IRC code

(Plan will be engineered per build location)



1. Concrete footer and Rebar
2. Insulated monolithic slab
3. Insulated Foundation forms
4. Light steel framed pre-insulated wall panel
5. Sill plates and top plates
6. Light steel framed pre insulated roof panels
7. Roof water and Vapor barrier
8. Interior framing lumber
9. Foundation flashing
10. Exterior IECC Compliant windows and doors
11. Exterior water flashing
12. High Quality mastic or cement board siding
13. Exterior trim
14. Overhang framing material

Exterior Cladding

Stone Options: We proudly offer Versetta Stone. This versatile and durable choice and its various textures and colors can complement multiple architectural styles, ensuring your ADU stands out while maintaining a cohesive look with your primary residence.

Siding Options: Our high-end Mastic siding brings together both beauty and quality. Available in a vibrant palette of colors, this siding lets you unleash your inner designer and infuse your personal style into your ADU's exterior. Choose from traditional Lapped, trendy Board and Batten, or chic Shaker styles,

We offer Cement Board siding as an upgrade for those who crave a modern twist.

Did Someone say "Upgrades?"

Want to Customize?
Aiming for Net-Zero or Phisus?
Just want more features?
Ask about our upgrade packages!

WHAT IS A ECO-SHELL??

The Eco-Shell Building System is your go-to solution for a fully engineered, highly insulated structural building envelope that meets or exceeds all major building codes—ensuring your home is not just built, but built right. This innovative system combines cold-formed steel and expanded polystyrene (EPS) to create complete wall and roof sub-systems, bringing together over 40 years of proven technology.

This means you can enjoy unmatched energy efficiency, exceptional design flexibility, and a structure that's significantly stronger than traditional framing. It's all about giving you peace of mind while creating a comfortable, durable, and stylish home that truly stands the test of time.

The Eco-Shell Building System maintains its simplicity and efficiency by utilizing common installation practices and familiar building components. This assembly integrates seamlessly with standard construction methods. Originating from both stick-built and SIP (Structural Insulated Panel) construction techniques, it employs dimensional lumber for corner connections and plates.

Unlike traditional stick framing, SIPs, and ICFs (Insulated Concrete Forms), the Eco-Shell system streamlines the construction process by eliminating several steps. This not only results in lighter material handling but also significantly reduces construction time, all while ensuring the high standards of quality and durability that you can expect from the Eco-Shell Building System.

A SOLIDLY BUILT HOME

The Eco-Shell Building System is not just about creating a stylish and durable home; it's also designed to bring you lasting benefits from the very beginning of construction for both builders and owners.

With the potential to assemble 1,500 square feet in about 30 days, you could experience faster construction and reduced loan payments.* Our efficient methods eliminate the need for insulation contractors, minimize waste, and incur limited facility charges.

Once you move in, the benefits continue with potential energy savings of 75 to 85% on heating and cooling costs, thanks to reduced air leakage. Plus, our designs meet stringent Passive House and LEED standards, making your ADU an environmentally friendly choice that may qualify for tax rebates. Durability is another key feature; our thermal envelope extends the lifespan of building materials and lowers maintenance costs.

By choosing Eco-Shell, you're not only investing in your future but also preserving the environment—saving 20 mature Douglas Fir trees for every 1,000 square feet constructed.

*pending weather, economic issues, or other factors outside Eco-Shell control.

CONTACT US



859-492-4222
859-368-8823



ecoshells.com



P.O. box 383 Sneads Ferry NC, 28460

ECO-SHELL LLC
Sustainable Homes and Building Systems

