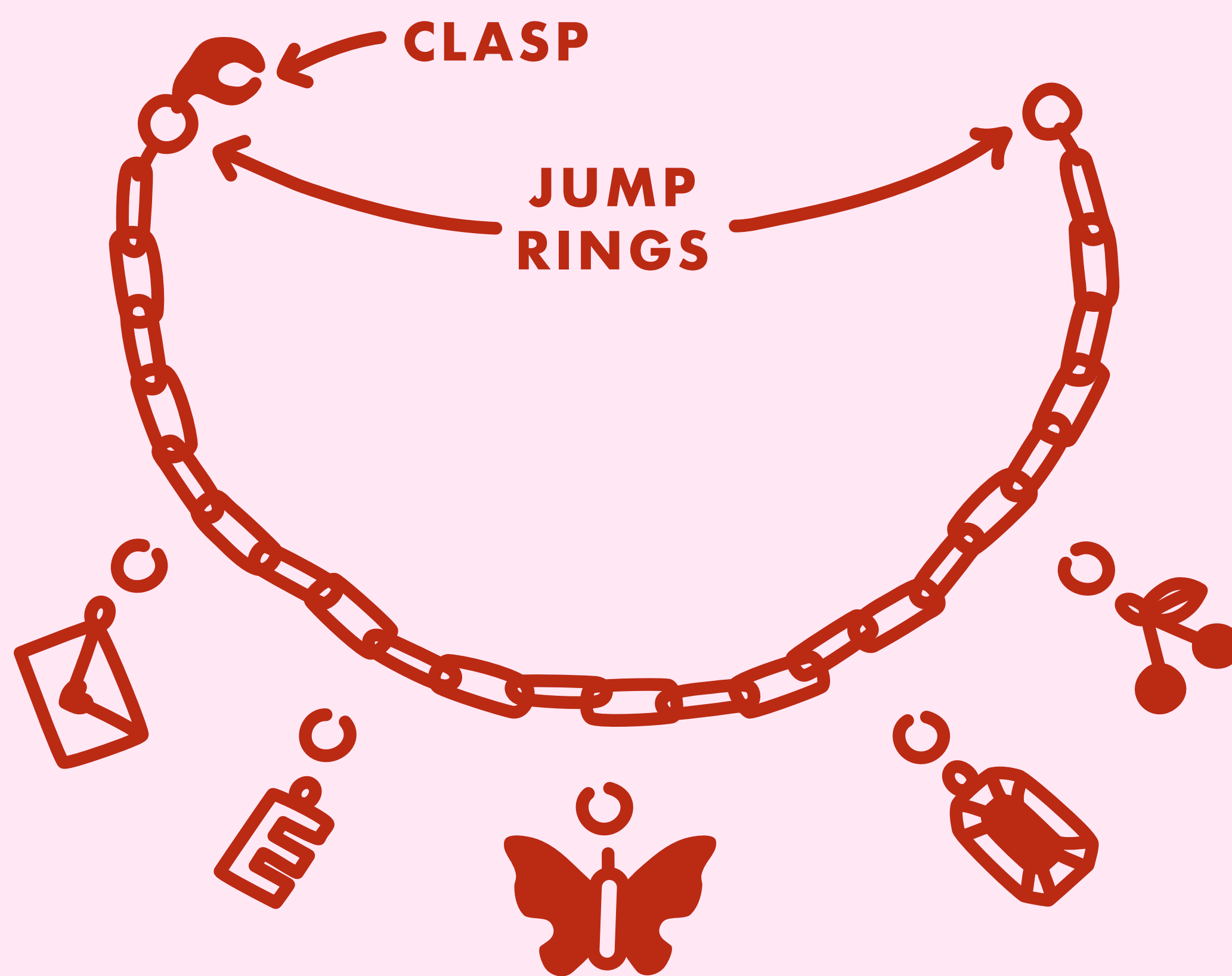


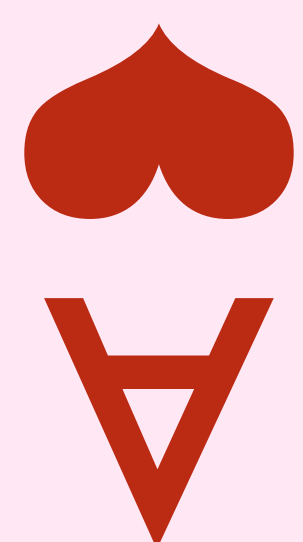
**LAY OUT YOUR DESIGN.**

**YOU'LL NEED A JUMP RING  
FOR EACH CHARM, TWO JUMP  
RINGS FOR THE ENDS OF THE  
CHAIN AND ONE CLASP!**

**WE SUGGEST GOING WITH THE  
HEAVIEST PIECE IN THE CENTER.**



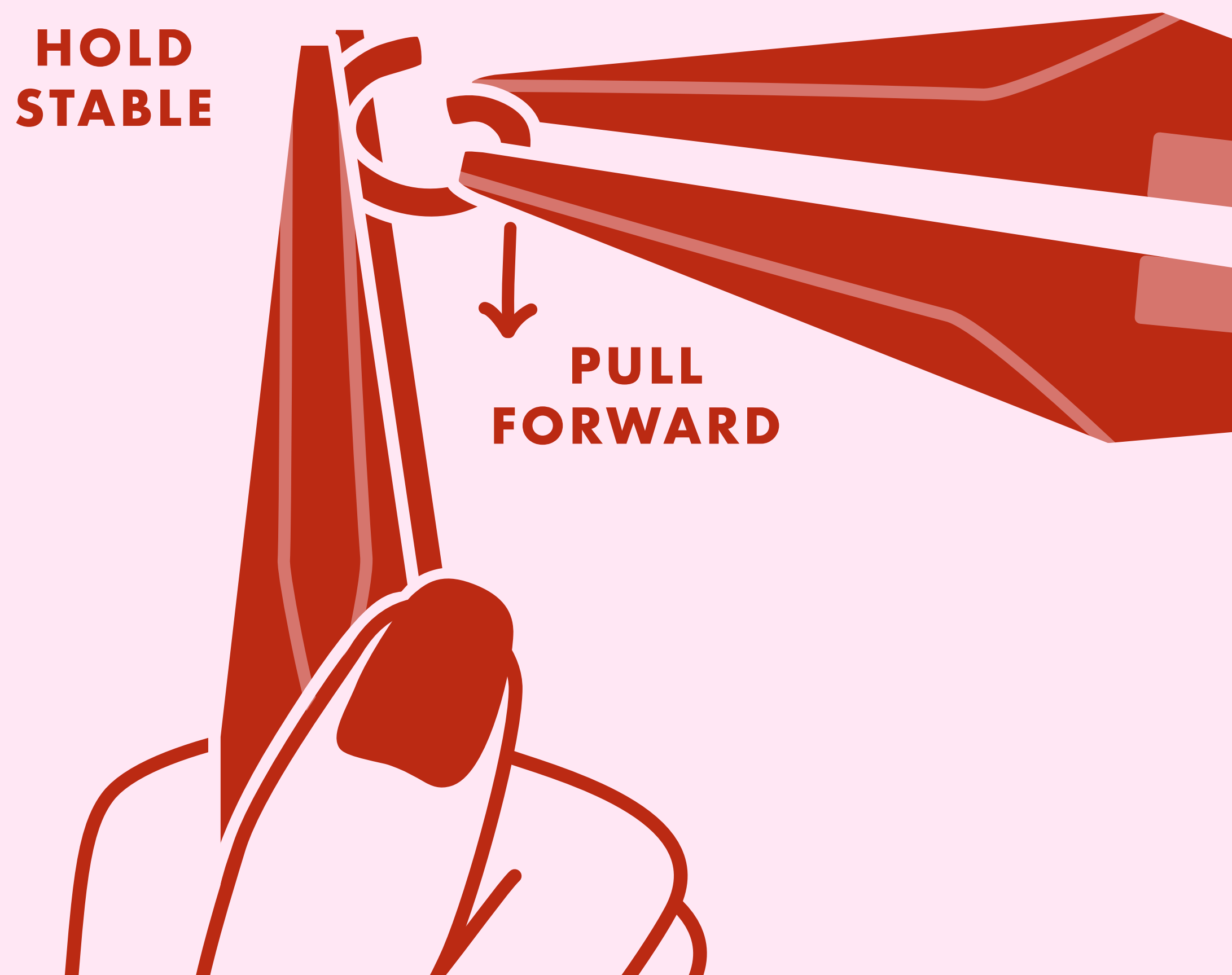
**FOR NECKLACES, KEEP THE  
CHARMS LOWER ON THE CHAIN  
SO THAT WHEN YOU WEAR IT,  
THE CHARMS ALL SHOW  
IN THE FRONT!**



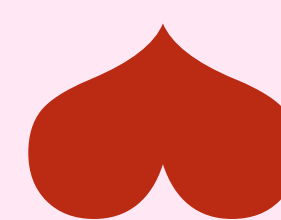
2



**HOLD ONE PLIER  
VERTICALLY TO HOLD  
HALF OF THE JUMP RING  
IN PLACE,**



**USE THE OTHER PLIER  
TO PULL THE OTHER HALF  
FORWARD TO OPEN.**



2

3  
♥

**FOR NECKLACES, START WITH  
YOUR CENTER CHARM TO  
ENSURE PROPER SPACING!**

**FOR BRACELETS, YOU  
CAN START ON ONE END  
OR IN THE CENTER!**



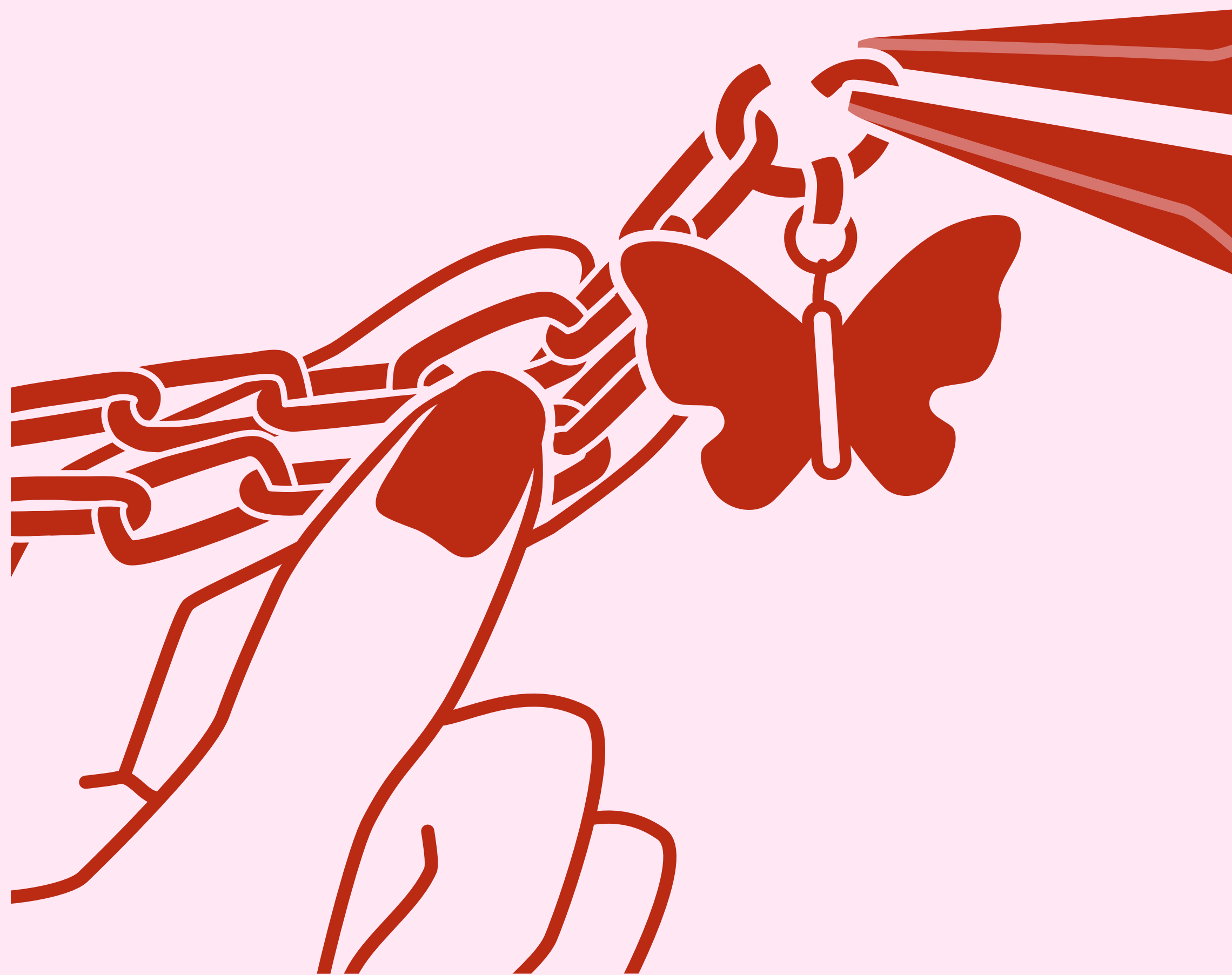
**CLAMP THE BOTTOM OF  
THE JUMP RING AND SLIDE  
ONE END THROUGH  
THE HOLE IN YOUR CHARM.**

♥  
3

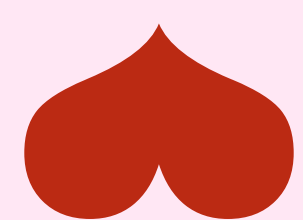
4



**CAREFULLY HOLD ONE  
END OF YOUR JUMP RING**



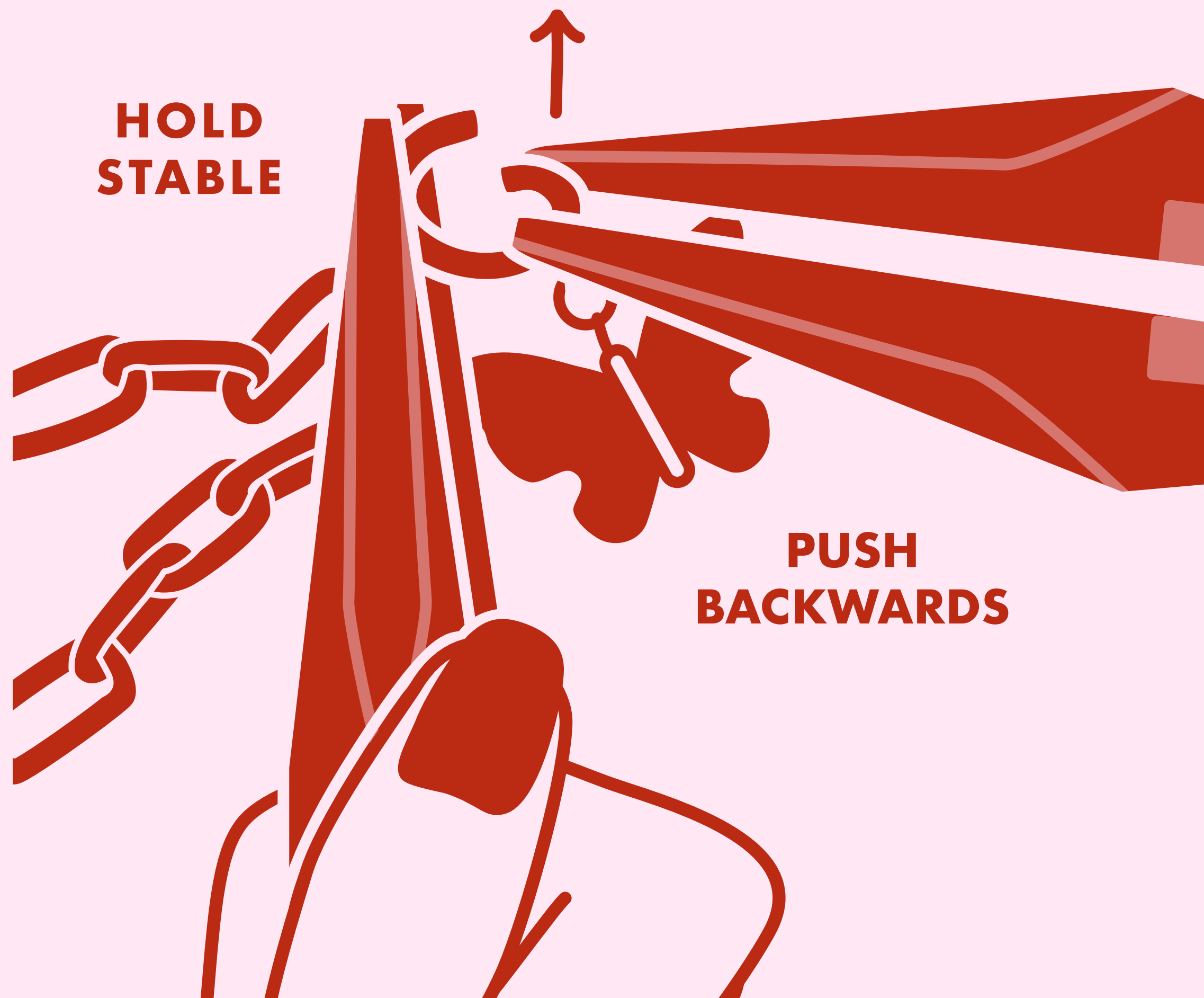
**AND SLIDE THE OTHER  
END THROUGH  
THE CENTER LINK OF  
YOUR CHAIN.**



4

5  
♥

**ONCE THE CHAIN AND  
CHARM ARE INSIDE THE JUMP  
RING, GRAB YOUR OTHER  
PLIER TO HOLD ONE SIDE OF  
THE JUMP RING STABLE.**

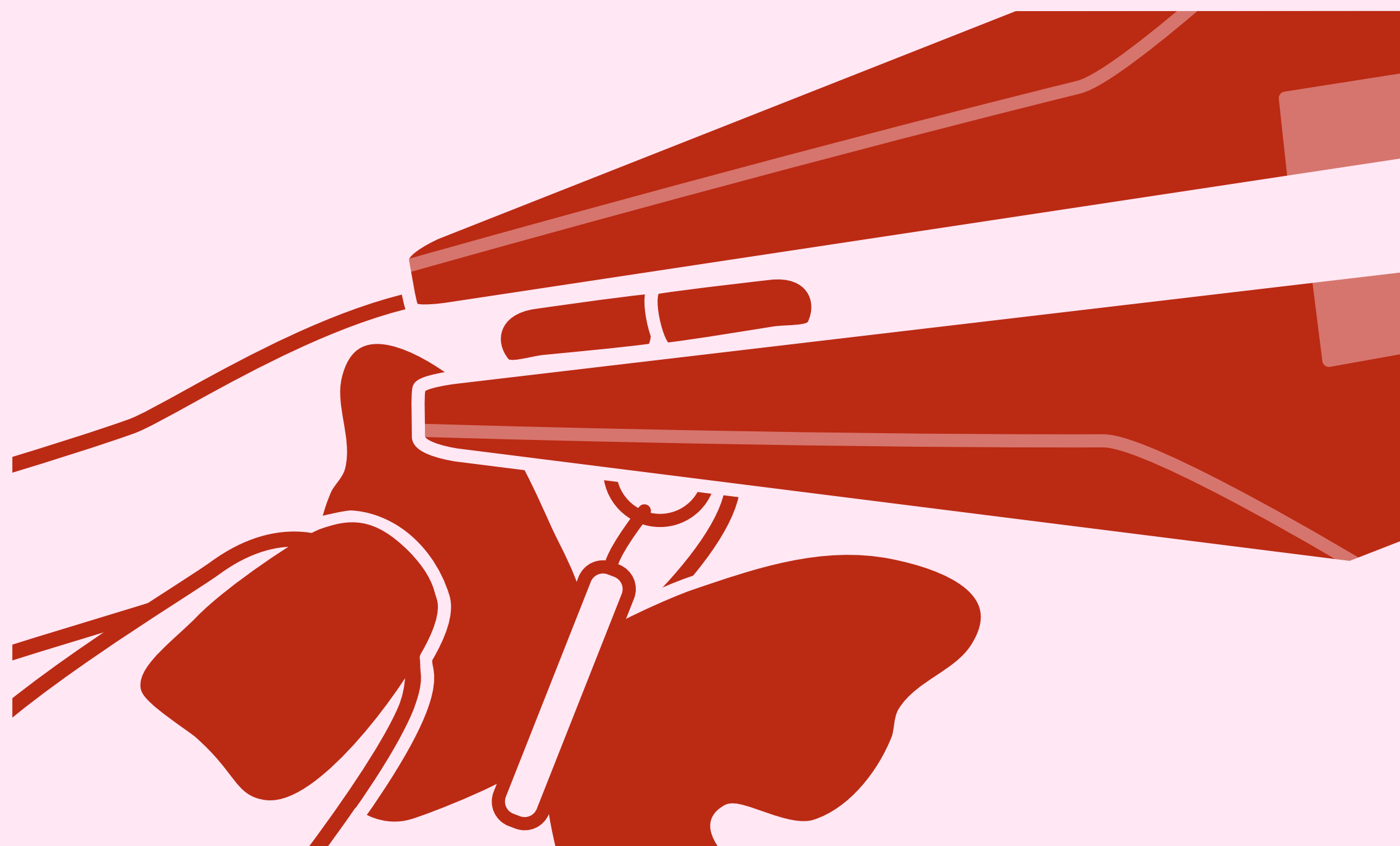


**PUSH THE RIGHT SIDE OF THE  
JUMP RING BACKWARDS  
TO CLOSE THE JUMP RING.**

♥  
5

6  
♥

**CHECK ALIGNMENT  
+ REPEAT FOR THE REST  
OF YOUR CHARMS!**



**SOME PEOPLE FIND IT  
HELPFUL TO COUNT  
THE LINKS BETWEEN THE  
CHARMS SO THAT THE  
CHARMS ARE  
SPACED OUT EVENLY.**

♥  
9

7  
♥



**FINAL TIPS/REMINDERS:**

**HEAVIER CHARMS LOOK  
GREAT IN THE CENTER!**

**WHEN IN DOUBT, USE  
A LARGER SIZE JUMP RING!**

**START WITH THE CENTER  
CHARM TO ENSURE  
THAT WHEN YOU WEAR  
YOUR NECKLACE,  
EVERYTHING IS CENTERED.**

**ATTACH YOUR CLASP  
USING A JUMP RING!**

**DON'T BE AFRAID TO  
ASK FOR HELP!**

**HAVE FUN!**

♥  
7