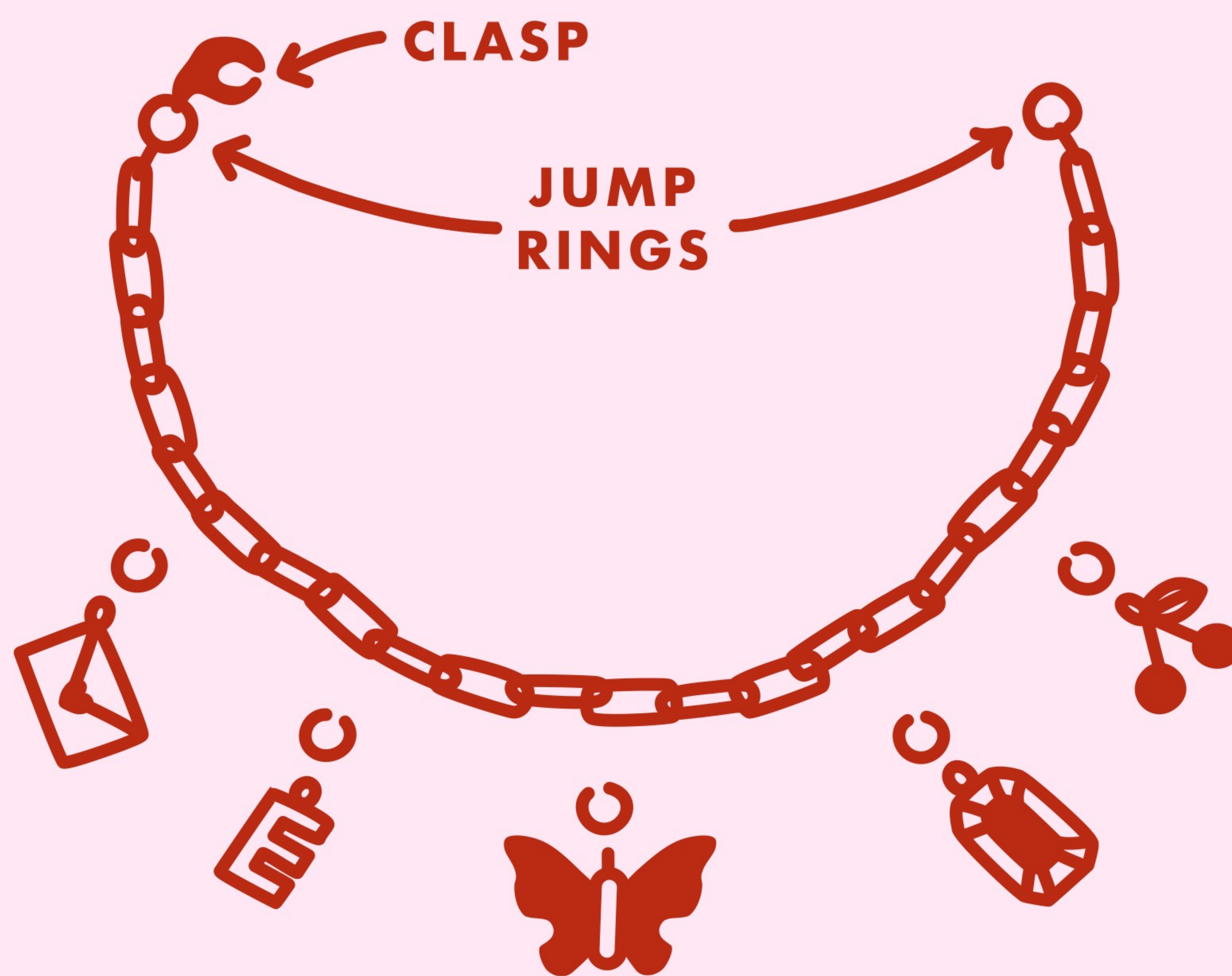


LAY OUT YOUR DESIGN.

**YOU'LL NEED A JUMP RING
FOR EACH CHARM, TWO JUMP
RINGS FOR THE ENDS OF THE
CHAIN AND ONE CLASP!**

**WE SUGGEST GOING WITH THE
HEAVIEST PIECE IN THE CENTER.**



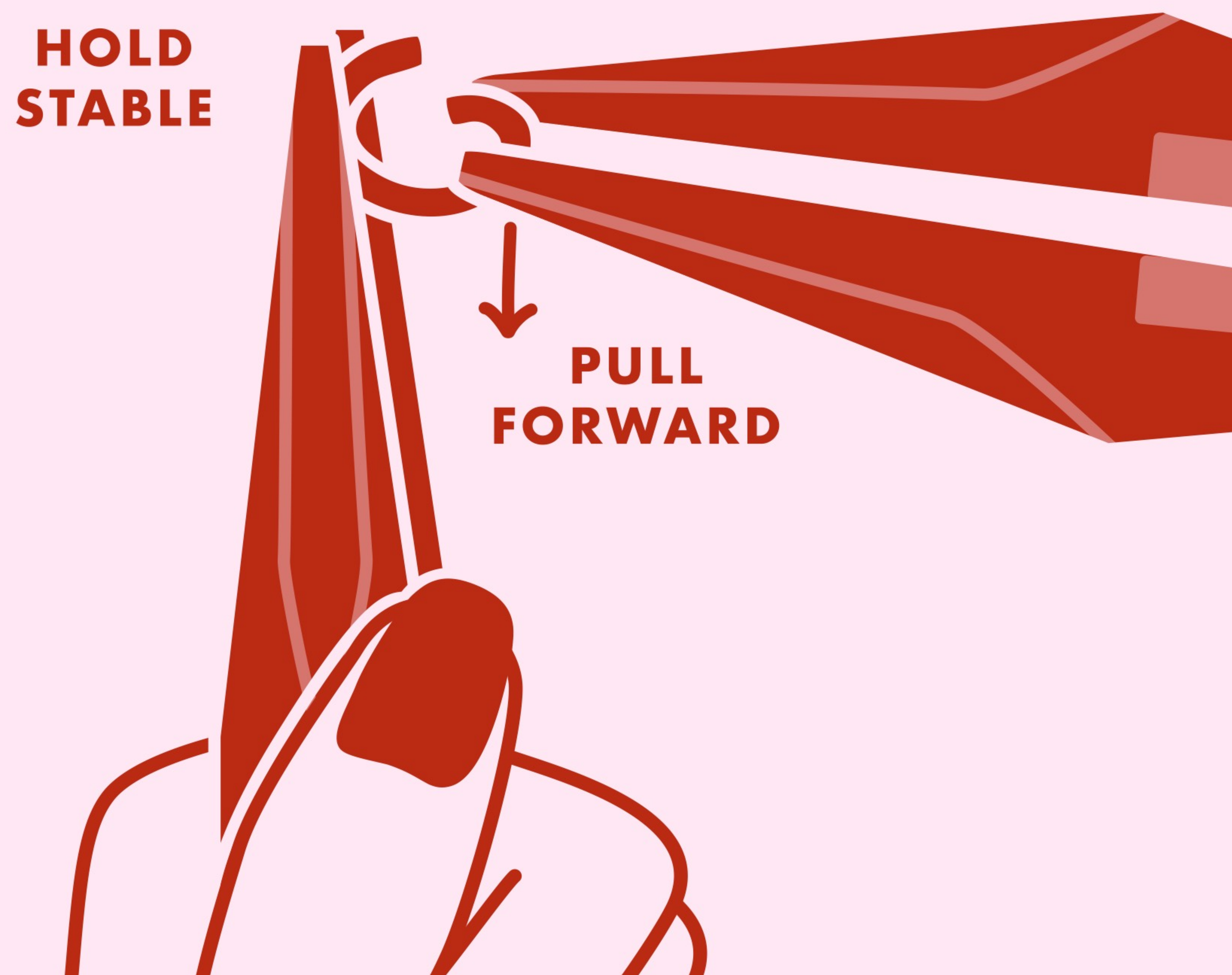
**FOR NECKLACES, KEEP THE
CHARMS LOWER ON THE CHAIN
SO THAT WHEN YOU WEAR IT.
THE CHARMS ALL SHOW
IN THE FRONT!**



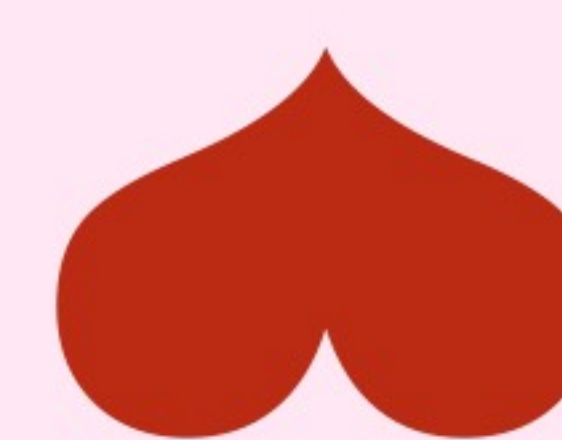
2



**HOLD ONE PLIER
VERTICALLY TO HOLD
HALF OF THE JUMP RING
IN PLACE,**



**USE THE OTHER PLIER
TO PULL THE OTHER HALF
FORWARD TO OPEN.**



2

3
♥

**FOR NECKLACES, START WITH
YOUR CENTER CHARM TO
ENSURE PROPER SPACING!**

**FOR BRACELETS, YOU
CAN START ON ONE END
OR IN THE CENTER!**



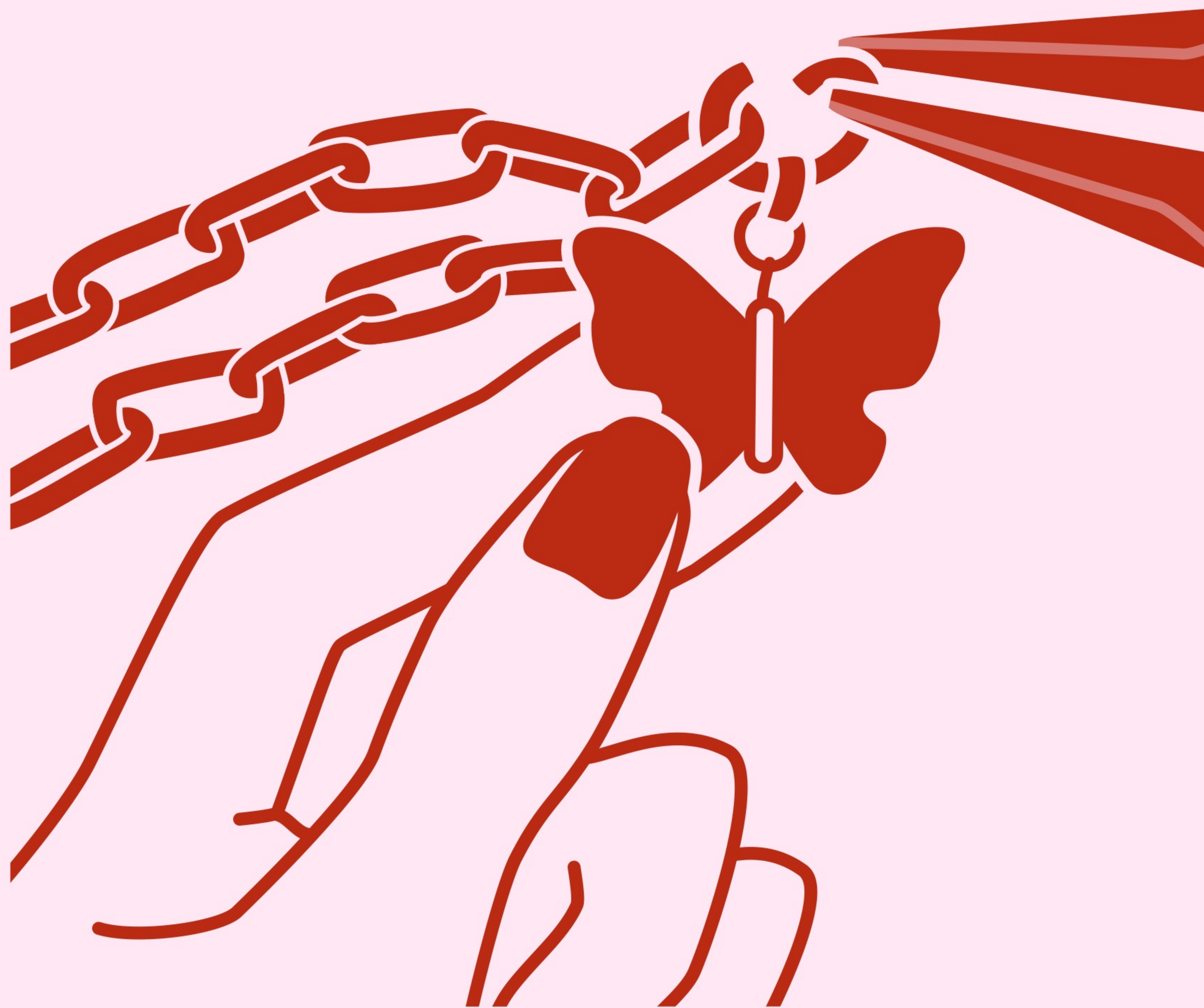
**CLAMP THE BOTTOM OF
THE JUMP RING AND SLIDE
ONE END THROUGH
THE HOLE IN YOUR CHARM.**

♥
3

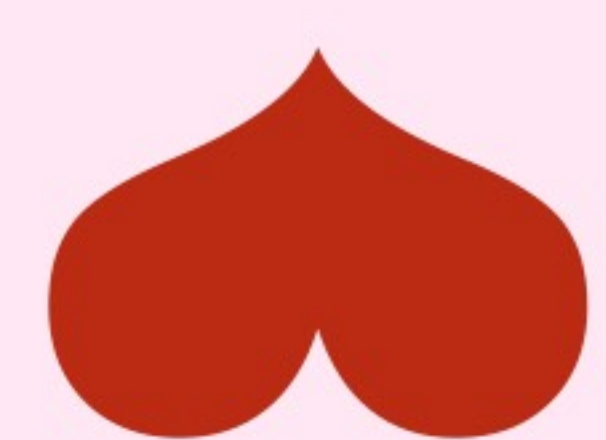
4



**CAREFULLY HOLD ONE
END OF YOUR JUMP RING**



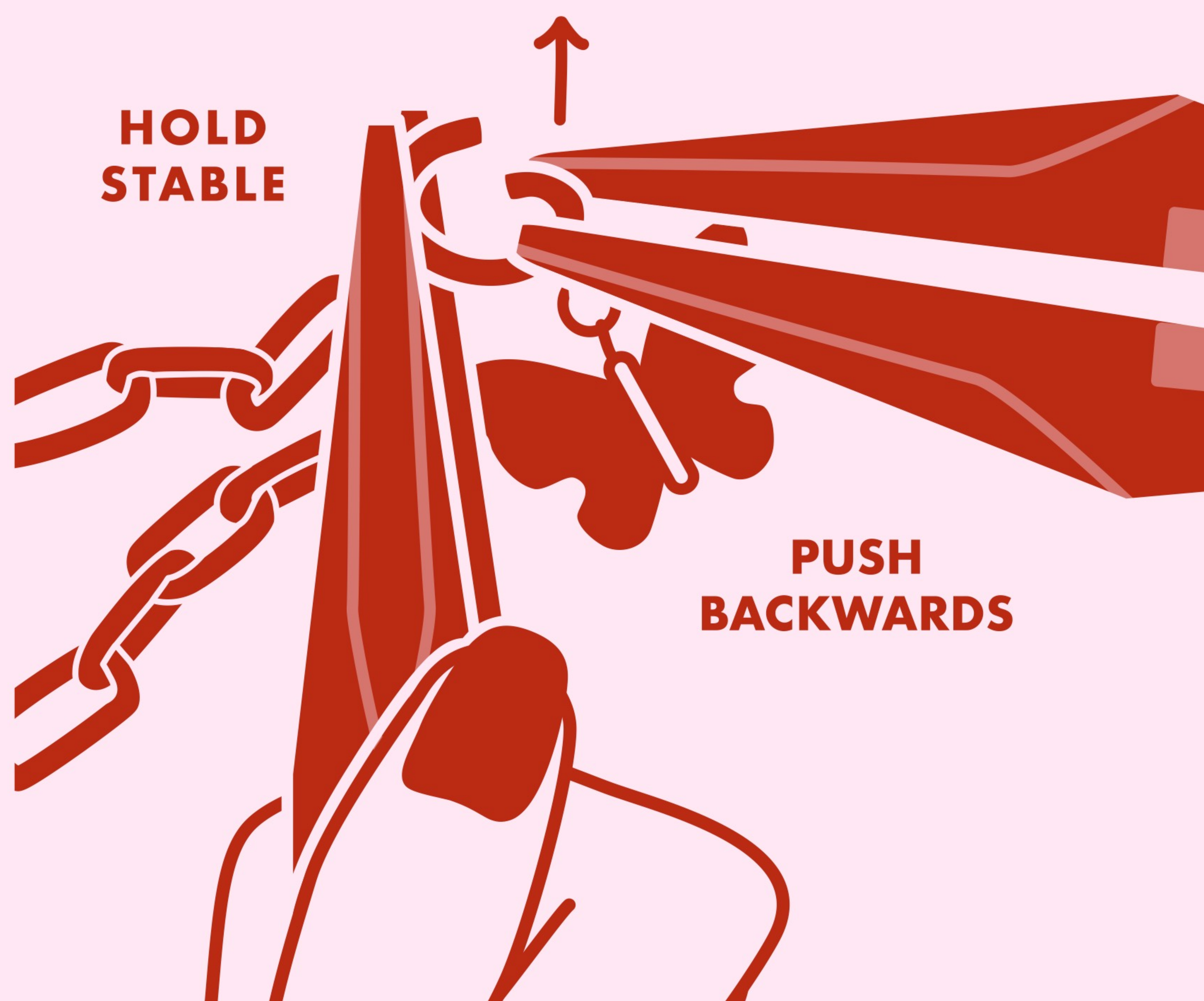
**AND SLIDE THE OTHER
END THROUGH
THE CENTER LINK OF
YOUR CHAIN.**



4

5
♥

**HOLD ONTO YOUR
CHAIN AND THE BOTTOM
OF THE JUMP RING.**

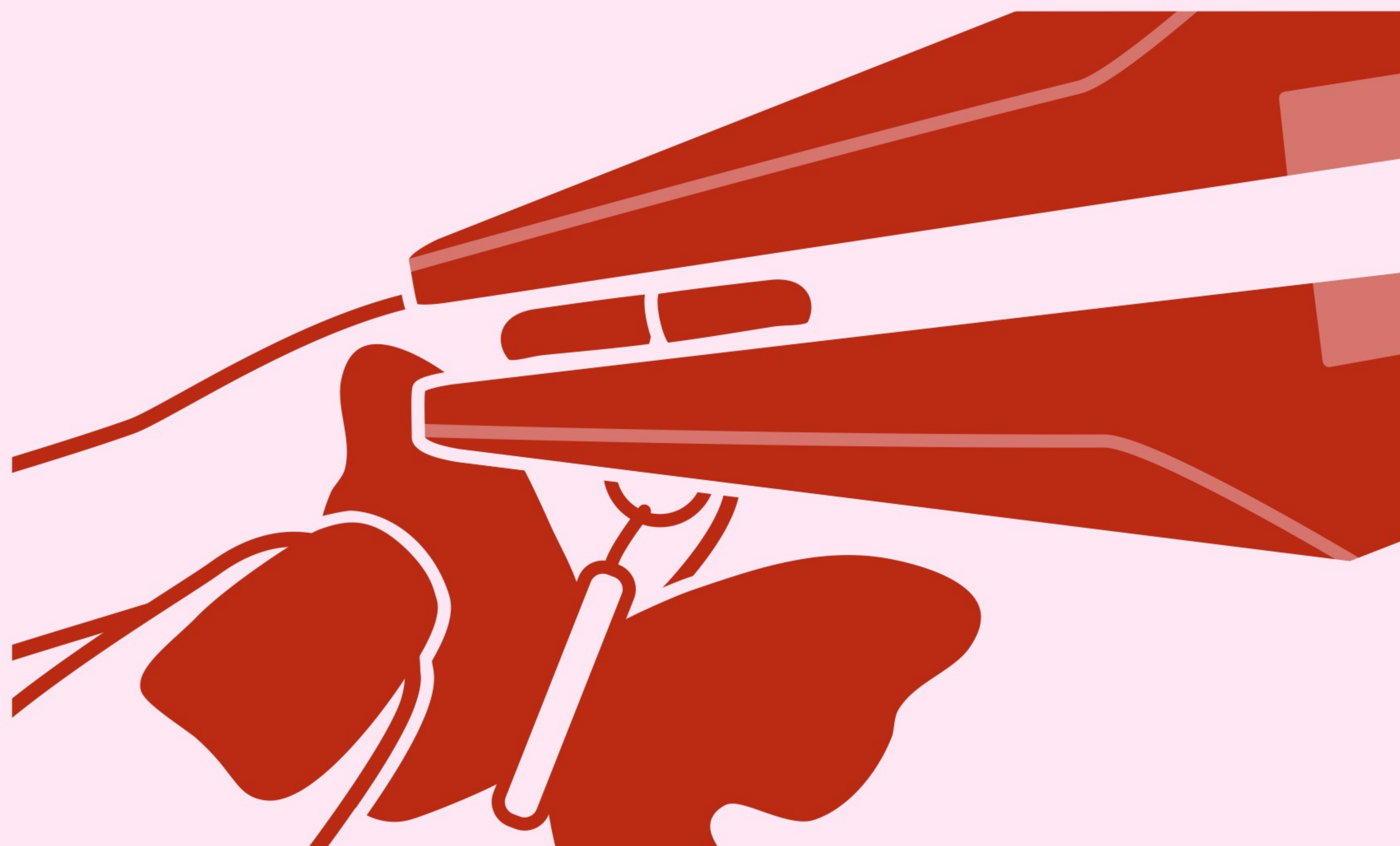


**PUSH THE RIGHT SIDE OF THE
JUMP RING BACKWARDS
TO CLOSE THE JUMP RING.**

♥
5

6
♥

**CHECK ALIGNMENT
+ REPEAT FOR THE REST
OF YOUR CHARMS!**



**+ SOME PEOPLE FIND IT
HELPFUL TO COUNT
THE LINKS BETWEEN THE
CHARMS SO THAT THE
CHARMS ARE
SPACED OUT EVENLY.**

♥
9

7
♥



FINAL TIPS/REMINDERS:

**HEAVIER CHARMS LOOK
GREAT IN THE CENTER!**

**WHEN IN DOUBT, USE
A LARGER SIZE JUMP RING!**

**START WITH THE CENTER
CHARM TO ENSURE
THAT WHEN YOU WEAR
YOUR NECKLACE,
EVERYTHING IS CENTERED.**

**DON'T BE AFRAID TO
ASK FOR HELP!**

HAVE FUN!

♥
7