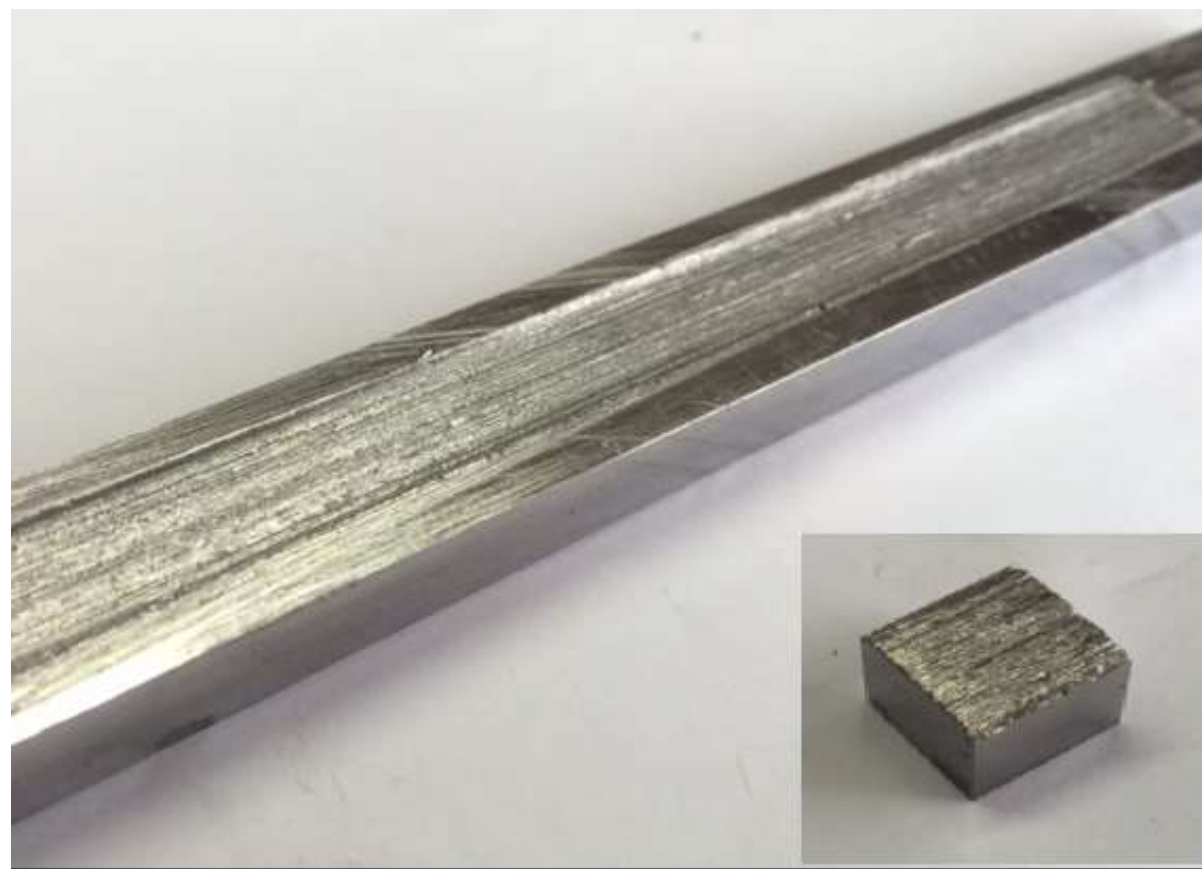
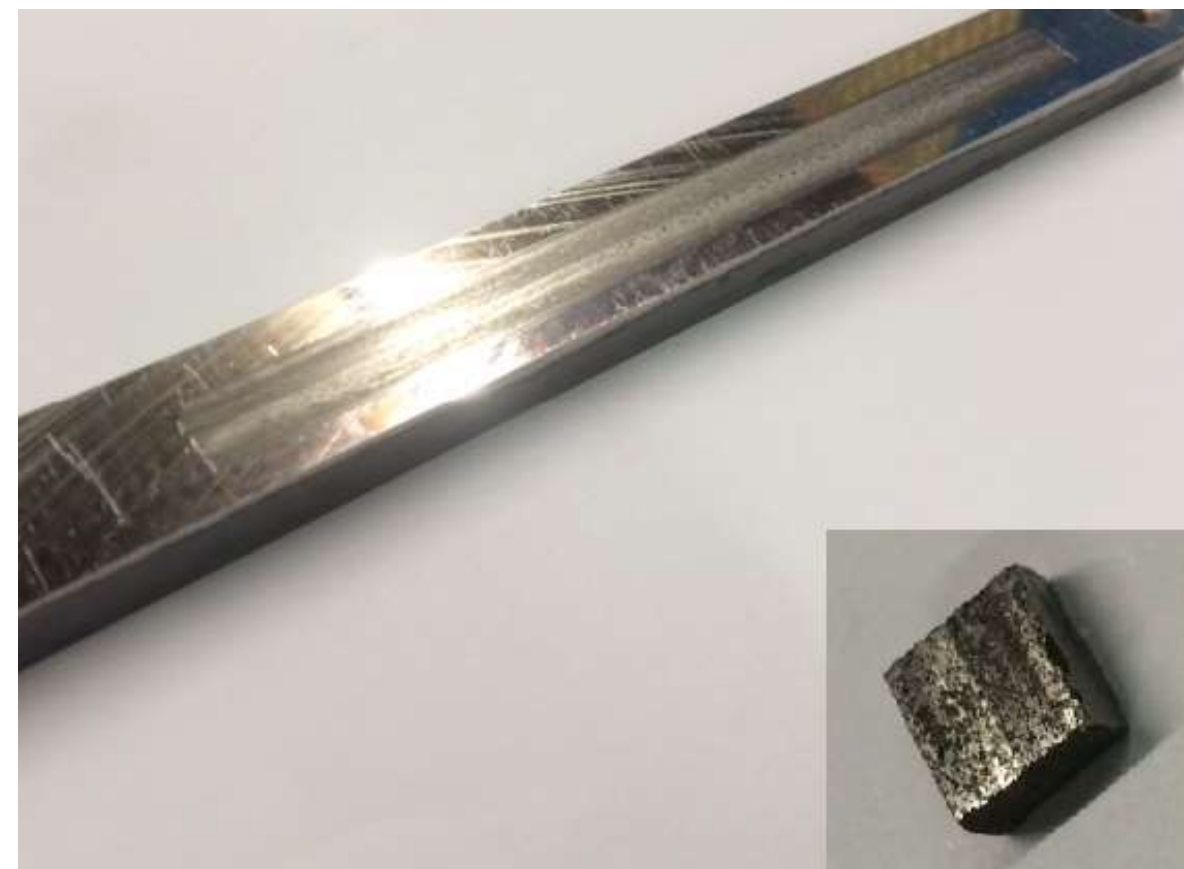


Sliding wear against steel

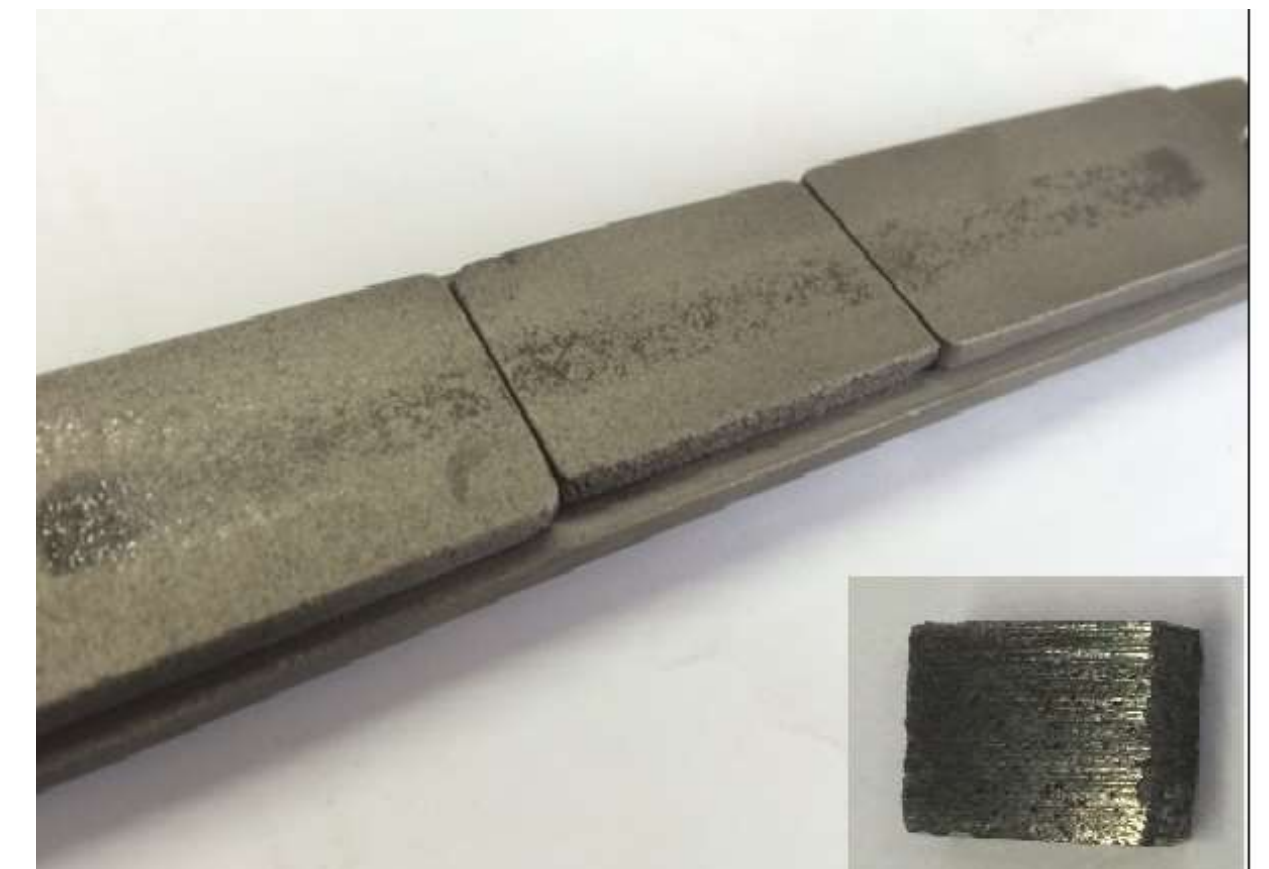
Sliding wear performance	Wear of pad in mm per km	Relative wear performance vs steel on steel	Wear of counterface in mm per km	Relative wear performance vs steel on steel
Hardened steel pad on hardened steel counterface	22.8	-	7.6	-
Ferobide pad on hardened steel counterface	0.03	711 times longer life of pad	0.4	19 times less wear of counterface
Ferobide pad on Ferobide counterface	0.3	79 times longer life of pad	n/a	n/a



Steel on Steel



Ferobide on Steel



Ferobide on Ferobide

→ Ferobide sliding on steel will last about 700 times longer than conventional hardened steels whilst the counterface will wear 19 times less