



RUNAWAY RESOURCES

1-800-RUNAWAY

24/7 & CONFIDENTIAL

Services: Crisis intervention, safe shelter referrals, free bus rides home, message relays between youth and families

www.1800runaway.org



SAFE PLACE

Look for the yellow "Safe Place" signs at businesses, libraries, and fire departments for immediate help

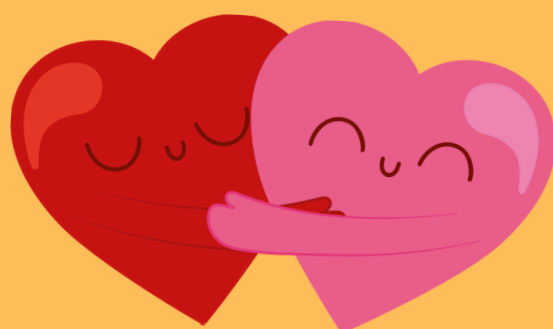
www.nationalsafeplace.org



LOVE IS RESPECT

Services: Support for teens in abusive or controlling relationships, which is often a factor in running away

www.loveisrespect.org



TEEN HELPLINE

NAMI peer-support service that offers information, resource referrals, and support to teens and young adults.

Text "Friend" to 62640



CRISIS HELP

NAMI Help is always available when you text, call or chat 988 to connect with the 988 Lifeline 24 hours a day, 7 days a week, and every day of the year.

