

MM-8945 **NEW Immersive*

FDA Class II Medical



- **Immersive Audio & Massage** – Built-in speakers with adjustable sound settings, a headphone port for private listening, and an **air bladder massage with three intensity levels.**
- **Personalized Comfort** – **Power headrest, lumbar support, three-zone heating, with 5 Motor Infinite Position, Tilt/Zero Gravity**
- **Convenient Features** – Pull-out arms with a self-leveling cup holder and a wireless charging station, plus a magnetic remote holder.
- **Tilt-elevates you from front to back similar to a rocking chair. This provides a zero-gravity experience offering a weightless experience**
- **Backup Power & Storage** – **A lithium battery backup** ensures functionality during power outages, with side pockets for easy storage.
- **Warranty** – Two years on parts and service; limited lifetime on steel lift frame

Stocked Cover: Capriccio 85% Polyester 15% Polyurethane - WS



Smoke



Cappuccino



Slate

H 40.5", W 39.5", D 41.5"; seat width 22", seat depth 20.5", seat height 23", full recline 72.5", full lift 57", distance from wall 14.5" *Weight Capacity: 375 lbs*



Experience top-notch entertainment: Immerse yourself fully with the Bluetooth sound system. Easily adjust the volume, treble, and bass with a simple dial. Customize the vibration intensity to your liking. Plug in your headset to enjoy without disturbing those around you. Connect wirelessly or via a wired connection. Located in left arm facing (LAF) storage arm.



Soothe your achy muscles: Enjoy 3-zone heating and air pocket massage both with three intensity settings. Located in right arm facing (RAF) storage arm.



Self-leveling cup holder in pull-out arm ensures your drink stays secure in any position (RAF).



Convenient tray table easily attaches and stores flat inside the storage arm for quick and easy access (LAF).



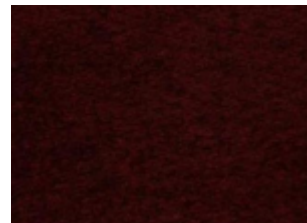
Wireless charging station with fast-charging USB-A and USB-C ports (LAF).

MM-201



- 2 motor - infinite position where the back and chaise work independently
- Two pocket on both sides of the recliner
- Chaise pad comfort - head to toe support
- Extended footrest
- 325 lb. occupant weight capacity
- Integrated emergency battery back up
- Warranty two years on parts and service; limited lifetime on steel lift frame

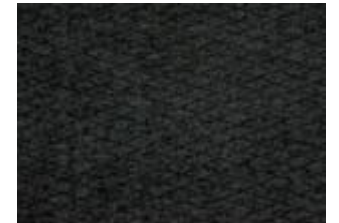
Stocked Cover: Guild-100% Polyester - W



Merlot



Wheat



Shadow

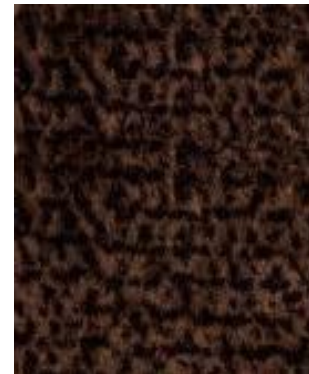
H 43.5", W 33.5", D 36"; seat to floor H 19", seat D 21", seat W 21"; Total recline length 75"

NM -1652SO



- 2 Motor System – *Lay flat, Zero Gravity and Trendelenberg (feet above the heart and head position - soothing/therapeutic)*
- Split Ottoman – extends for more leg support
- *Pocketed Coil Spring seat construction*
- *Extended foot rest*
- Available in Performance Fabrics and/or Deluxe Heat & Massage system – special order
- 375 lb. occupant weight capacity
- H 47", W 37.5", D 44.5"; Seat H 20.5", seat D 21", seat W 20"; Total recline length 80"

Fabric: Angus – 100% Polyester - S



Chocolate



Nutmeg



Slate



*FDA Class II
Medical Device*

NM-1652SO HM

With Heat/Massage



- 2 Motor System – *Lay flat, Zero Gravity and Trendelenberg (feet above the heart and head position - soothing/therapeutic)*
- Split Ottoman – extends for more leg support
- *Pocketed Coil Spring seat construction*
- *Extended foot rest*
- Comes with Deluxe Heat & Massage system
- 375 lb. occupant weight capacity
- H 47", W 37.5", D 44.5"; Seat H 20.5", seat D 21", seat W 20"; Total recline length 80"

Fabric: Angus – 100% Polyester - S



Chocolate



Nutmeg



Slate



*FDA Class II
Medical Device*

MM-2001



**FDA Class II
Medical Device***

- Comfort Control: Whisper Quiet Power Recline and Lift - Recline to your own comfort zone, or use the lift function to aid in sitting or exiting your chair-Single Motor
 - USB Port in Hand wand – Charge your tablet or phone from the comfort of your recliner
 - Easy to reach side pockets on both sides – Store your magazines, newspapers or remote controls
 - Chaise pad construction – Head to toe comfort and support
 - 375 Pound Weight Capacity
-
- H 40.5", W 32.5", D 37"; Seat H 18.5", seat D 20", seat W 20.5"; Total recline length 65"

Fabric: Pocono – 100% Polyester - S



Cement



Chocolate



Portobello



Midnight

MM-3250



- Comfort Control: Whisper Quiet Power Recline and Lift - Recline to your own comfort zone, or use the lift function to aid in sitting or exiting your chair-Single Motor
- USB Port in Hand wand – Charge your tablet or phone from the comfort of your recliner
- Easy to reach side pockets on both sides – Store your magazines, newspapers or remote controls
- Chaise pad construction – Head to toe comfort and support
- 375 lb. occupant weight capacity
- H 40.5", W 34", D 36.5"; Seat H 20.5", seat D 20.5", seat W 22.5"; Total recline length 63"

Fabric: Polo – 94% Polyester, 6% Nylon - W



Java



Lapis

**FDA Class II
Medical Device***

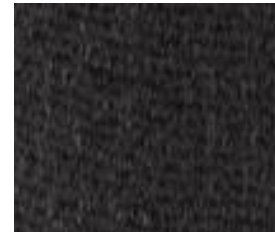
MM-3600

Mega Motion's FIRST Single Motor Lay-Out with Adjustable Headrest



- Lay-out, Recline & Lift Recline to your comfort zone, or use the lift function to aid in sitting or exiting your chair
- Pull out arms with cup holders
- Remote comes through either side pocket for a right- or left-handed person
- Convenient USB ports (USB-A and USB-C)
- Two pocket on both sides of the recliner
- Chaise pad comfort - head to toe support
- Extended footrest
- 325 lb. occupant weight capacity
- Integrated emergency battery back up
- Warranty two years on parts and service; limited lifetime on steel lift frame

Fabric: Trento- 100% Polyester



Charcoal



Pewter



Ash

H 43", W 38.5", D 43"; seat to floor H 20", seat D 20.5", seat W 20"; Total recline length 72.5"

MM-3601



- Single Motor system
- **Standard Heat & Massage System with three massage wave/intensity** settings; Massage motors in back and seat, Heat pad in lower back
- Chaise pad seat Construction
- 325 lb Occupant capacity
- H 42", W 33.5, D 38.5", Seat H 19.5", Seat D 20", Seat W 22"; Total recline length 57"

Fabric Options: Spice – 100% Polyester - W



Stone



Walnut

**FDA Class II
Medical Device***

MM-3603

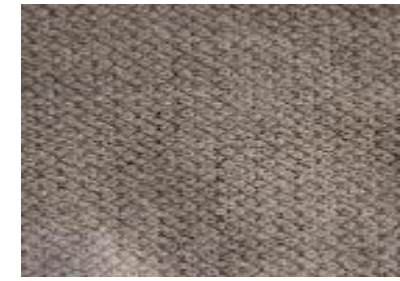


- Casual Styling comfort in a power recliner with lift function
- **2 motor Recline and Lift system: infinite positions up to Lay Flat**
- Chaise pad seat construction with extension ottoman
- Center mounted hand wand for either left or right handed users with a USB port for charging electronic devices
- Side pockets on both sides of the recliner for lots of storage room
- Battery Back via two nine volt batteries (not included) placed in the transformer
- Heavy Duty Steel Mechanism
- 375 lbs. Occupant weight capacity
- 36: W x 39.5" OD x 43.75" H'; seat H 19", seat D 21", seat W 21", Total recline D 73.5"

Fabric Options: Merino 100% Polyester - W



Latte



Steel

**FDA Class II
Medical Device***

MM-3604



**FDA Class II
Medical Device***

- Single Motor system
- Covered in Lexi – StaKleen:
Medical Grade 100%
Polyurethane fabric, bleach
cleanable, anti-microbial and
water repellant
- Chaise pad seat Construction
- Dual Side Pockets
- 325 lb Occupant capacity
- H 42", W 33.5, D 38.5", Seat H
19.5", Seat D 20", Seat W
22"; Total recline length 57"

sta★kleen®
PERFORMANCE FABRIC



Chestnut

MM-3605



**FDA Class II
Medical Device***

- Transitional style
- Single motor recline and lift system
- USB port, 2 Side pockets
- Chaise pad seat construction
- 32.5"W x 38.5: OD x 43" H; seat H 20.5", seat W 21.5", seat D 20.5", Total recline length 66"
- 325 lbs. Occupant weight capacity
- *EMC tested and approved*

Fabric Options: Burbank



Taupe



Java



Pewter

MM-3615



**FDA Class II
Medical Device***

- Single Motor
- **Standard Heat and Massage** soothing relief – massage in seat and back, heat in lower back
- Chaise Pad Seat Construction
- 325 Pound occupant weight capacity
- 32"W x 38.5: OD x 43" H; seat H 19.5", seat W 22", seat D 21.5", Total recline length 66.5"
- **EMC tested and approved**

Fabric Options: Saville 100% Polyester - W



Grey



Earth

MM-3620



FDA Class II Medical Device*

**FDA Class II
Medical Device**

- Comfort Control: Whisper Quiet Power Recline and Lift - Recline to your own comfort zone, or use the lift function to aid in sitting or exiting your chair-Single Motor
- **Standard Heat & Massage – Heat pad in lower back area, multi-function/intensity massage motor in seat and back areas**
- Deeply padded arms for added comfort and support on entering and exiting the recliner
- Chaise pad construction – Head to toe comfort and support
- 325 Pound occupant weight capacity
- MegaGuard Anti Microbial Fabric upgrade

Fabric: MegaGuard - Dynamo



Leather



Indigo



MM-3710



**FDA Class II
Medical Device***

- Infinite Position: **Lay-Flat, Recline & Lift**
Recline to your comfort zone, or use the lift function to aid in sitting or exiting your chair
- **MegaGuard™ Fabric** with Alta Senior Living finish – Anti-Microbial, stain resistant, simple to clean, water repellant with a moisture barrier backing (does not allow any liquid to penetrate into the filling materials)
- **Four Motor Comfort System**
 - **Power-Tilt Headrest and Power Adjustable Lumbar**
 - **Dual motors allow the footrest and back to be controlled independently**
- **Three Zone Heat** – Heat in upper back, lower back and chaise pad ottoman areas – keeps your back and legs warm
- Easy to reach side pockets on both sides – Store your magazines, newspapers or remote controls
- Chaise pad construction – Head to toe comfort and support
- 375 Pound weight test
- **Lithium battery included**

H 42", W 36", D 43"; Seat H 19.5", seat D 21", seat W 19"; Total recline length 72"

Stocked Cover: Velvety



Natural



Mink



Navy

MM-3712



**FDA Class II
Medical Device***

- Infinite Position: **Lay-Flat, Recline & Lift**
- **MegaGuard™ Fabric** with Alta Senior Living finish – Anti-Microbial, stain resistant, simple to clean, water repellant with a moisture barrier backing (does not allow any liquid to penetrate into the filling materials)
- **Four Motor Comfort System**
 - **Power-Tilt Headrest and Power Adjustable Lumbar**
 - **Dual motors** allow the footrest and back to be controlled independently
- **Three Zone Heat** – Heat in upper back, lower back and chaise pad ottoman areas – keeps your back and legs warm
- **Pullout Cup Holder (LAF front arm) FLAT CHARGING STATION (RAF)** Easy to reach side pockets on both sides – Store your magazines, newspapers or remote controls
- Chaise pad construction – Head to toe comfort and support
- Standard glide-extension footrest
- 375 Pound occupant weight capacity
- **Lithium Battery Pack included**

H 43", W 39.5", D 43"; Seat H 20", seat D 21.5", seat W 21"; Total recline length 72"

Stocked Cover: Ovation



Ebony



Stone



Mink

MM-3730



**FDA Class II
Medical Device***

- Casual Styling comfort in a power recliner with lift function
- 4 motor Recline and Lift system: **infinite positions up to Lay Flat with Power Adjustable Headrest and Lumbar Comfort Zones**
- Chaise pad seat construction with extension ottoman
- Center mounted hand wand for either left or right handed users with a USB port for charging electronic devices
- 375 lbs. Occupant weight capacity
- **Lithium Battery Pack included**
- 36: W x 39.5" OD x 43.75" H'; seat H 19", seat D 21", seat W 21", Total recline D 73.5"

EMC tested and approved

Fabric: Stonewash

NEW COLOR



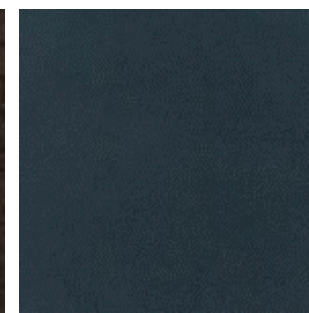
Dove



Granite



Gunmetal



Ocean

MM-3815

New Air Bladder Massage

Weight Capacity:
Occupant weight up to
375 lbs.

4 motor lift and recline
Infinite Position to lay flat-back
and chaise work independently

Air bladder massage

***Adjustable headrest and
lumber***

Pull out arms with cup holders



***FDA Class II Medical
Device****

Fabric – Capricio Walnut 85% Poly/15%PU



Walnut



Olive



Saddle

MM-3900 *NEW Tilt Chair*



- 5 Motor *Infinite Position*
- 375 lb. occupant weight capacity
*with pull out arms Wireless
Charger/Cup Holder*
- *Tilt chair-true zero gravity*
- *Three Zone Heat-back, seat and
chaise*
- *Adjustable headrest and lumbar
with extended ottoman*
- Easy to use toggle remote
- *Lithium Battery Included*

*FDA Class II
Medical Device**

Stocked Cover: Arula-Cleaning code W



Elephant



Mink



Dove

MM-3975

Exclusive Independent Tilt with Toggle Remote



Mega Motions FIRST top grain leather to pass stringent testing for use on Medical devices. This top grain leather is on back, seat and chaise. Vinyl match on sides and back of chair



H 43", W 40", D 42"; seat to floor H 21", seat D 21", seat W 22"; Total recline length 74"

5 Motor infinite position Zero Gravity Lay-Flat, Recline & Lift

- Pull out arms one with wireless charging station and the other with a self leveling cup holder

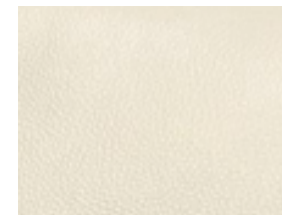
Convenient USB Ports (USB-A and USB-C)

- Tilt-elevates you from front to back similar to a rocking chair. This provides a zero-gravity experience offering a weightless experience
- Three Zone Heat-back, seat and chaise
- Adjustable headrest and lumbar with extended ottoman
- Easy to use toggle remote
- Remote comes through either side pocket for a right-or left-handed person
- Lithium Battery included
- Warranty two years on parts and service; limited lifetime on steel lift frame

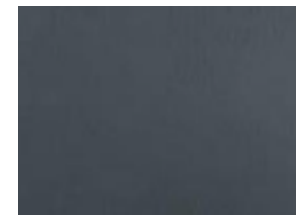
Stocked Cover Sorrento - Top Grain Leather



Coffee



Dove



Ocean

MM-4020 **NEW**



- **3 position chair slender design with taller back**
- Single Motor system
- Hand wand with USB
- Easy to reach side pockets on both sides – Store your magazines, newspapers or remote controls
- Chaise pad seat Construction
- 325 lbs. Occupant capacity



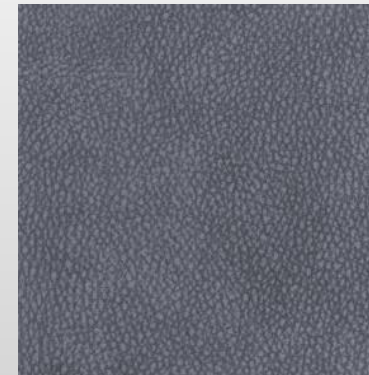
FDA Class II Medical Device

**FDA Class II
Medical Device***

Fabric Options: Arula 100% Polyester - W



Dove



Dolphin

MM-5001



**FDA Class II
Medical Device***

- Comfort Control: Whisper Quiet Power Recline and Lift - Recline to your own comfort zone, or use the lift function to aid in sitting or exiting your chair-Single Motor
- USB Port in Hand wand – Charge your tablet or phone from the comfort of your recliner
- Chaise pad construction – Head to toe comfort and support
- 375 Pound Weight Capacity

H 44", W 37, D 38", Seat H 21", Seat D 20", Seat W 22.5";
Total recliner length 67.5"

Fabric: Kaysen - 100% Polyester - S



Chocolate



Graphite



Mushroom

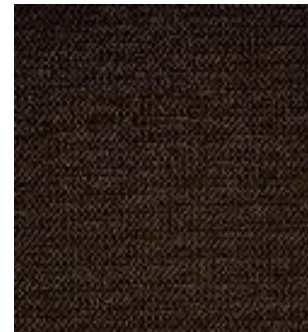
MM-5300



**FDA Class II
Medical Device***

- Comfort Control Single Motor recline and lift function system-Single Motor
- Chaise pad comfort – head to toe support; ample seat width
- Scoop seat for added comfort
- 375 lb. occupant weight capacity
- H 45", W 39.5", D 39.5"; Seat H 21.5", seat D 21", seat W 20.5"; Total recline length 69.5"

Fabric: Domain– 100% Polyester – S/W



Chocolate



Iron

MM-6200



FDA Class II
Medical Device*



**FDA Class II
Medical Device***

- Comfort Control Single Motor recline and lift function system
- Two pocket on both sides of the recliner
- Chaise pad comfort – head to toe support; ample seat width
- Extended foot rest to comfortably seat someone 6"4'
- Comes with scratch resistant fabric upgrade
- 375 lb. occupant weight capacity
- H 47.5", W 43", D 37.5"; Seat H 21.5", seat D 21", seat W 22.5"; Total recline length 72.5"

Fabric: Watford Cognac- 100% Polyester - W

MM-6410

New TruPetite



***FDA Class II
Medical Device****

- TruPetite™ - 17.5 inch seat height allows easier entering and exit of the recliner
- Single motor with 375 pound weight capacity
- Seat Width 19' Depth 18' Height 17.5'
- Total Width 30.5' Depth 36' Height 39.5'

Stocked Cover: Benti – Performance Finished



Latte



Espresso

NM-7001

Weight Capacity: Occupant weight up to 500 lbs.



- Dual motor recline and lift system-synchronized to keep the recliner level to floor when reclining or lifting
- 500 lb. occupant weight capacity
- Chaise pad head to toe comfort
- H44", W 39.5", D 44"; seat H 19.5", seat W 26", seat D 22"; total recliner length 71.5"

Fabric – Vance – 100% Polyester - WS



Blue



Cafe



Wine

***FDA Class II
Medical Device****

NM-7001HM

Heat/Massage

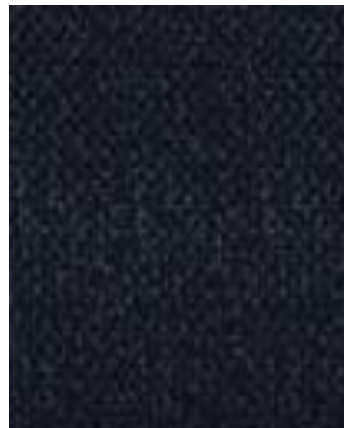


*FDA Class II
Medical Device**

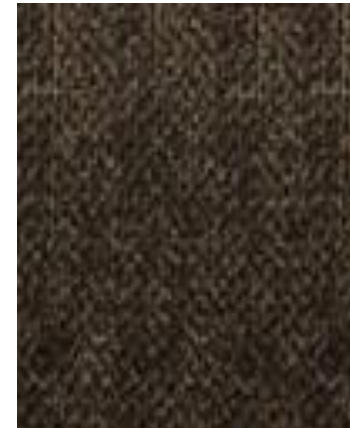
***Weight Capacity: Occupant
weight up to 500 lbs.***

- Dual motor recline and lift system-synchronized to keep the recliner level to floor when reclining or lifting
- 500 lb. occupant weight capacity
- Chaise pad head to toe comfort
- H44", W 39.5", D 44"; seat H 19.5", seat W 26", seat D 22"; total recliner length 71.5"

Fabric – Vance – 100% Polyester - WS



Blue



Cafe



Wine

MM-7305

***Weight Capacity: Occupant weight
up to 500 lbs.***



- Dual sync drive and lift system-synchronized to keep the recliner level to floor when reclining or lifting
- 500 lb. occupant weight capacity
- Chaise pad head to toe comfort

Stocked Cover: Darby – Performance Fabric



Pewter



Java



Midnight

***FDA Class II
Medical Device****

Mega Motion Heat & Massage Systems

DELUXE HEAT & MASSAGE

Two massage zones

- Dual massage motors located in the middle of the recliner's back and middle of the seat
- Three levels of massage intensity – adjust to your requirements
- Three massage patterns – varying from pulse, wave and full massage

Two heat zones in the lower back area (lumbar area) and seat area

- Two easy-to-use temperature selections – low and high
- System cycles off after 20 minutes of use



STANDARD HEAT & MASSAGE

Two massage zones

- Single massage motor located in the middle of the recliner's back and middle of the seat
- Three levels of massage intensity – adjust to your requirements
- Three massage patterns – varying from pulse, wave and full massage

Heat zone in the lower back (lumbar) area

- Two easy-to-use temperature selections – low and high
- System cycles off after 20 minutes of use

