

# NIGHT FURNITURE & DAY™



## CATALOG

*Diamond Distribution*

### MARYLAND OFFICE

Tel: 240-646-0802  
Fax: 301-497-1183  
[diamondfurnishings@yahoo.com](mailto:diamondfurnishings@yahoo.com)

### FLORIDA OFFICE

Tel: 407-253-7909  
Fax: 888-316-9886  
[shannon@anchorfurniture.com](mailto:shannon@anchorfurniture.com)



## **WELCOME TO NIGHT & DAY FURNITURE**

At Night & Day Furniture, we believe that smartly designed furniture is an extremely valuable asset. Our product assortment essentially revolves around sleep solutions specializing in space saving solutions in the following categories: youth and adults bedrooms, bunk beds and accessories, Murphy Cabinet beds, desk beds, convertible sleepers, and Futon frames.

The Night & Day Furniture product line is manufactured in our own factories located in Malaysia and Indonesia. We use “Para” wood, also known as “Rubberwood”, which are plantation grown hardwoods, harvested and managed through systematic planting and replanting programs.

We provide information and support through product videos, virtual tours, point of purchase (POP), online product dimension specifications and clear line drawing product assembly instructions to enhance both the retailer and the customer experience.

The core principles at Night & Day Furniture are to strive to do business based on the following core principles QUALITY...VALUE...AVAILABILITY and SERVICE.

The team at Night & Day Furniture has been designing and manufacturing furniture for over 30 years. We know what it takes to build quality furniture. Our QC teams are based at the factories in Malaysia and Indonesia allowing them to inspect product throughout the production process.

Our mission: “The perfect sleeping solution for small spaces in today’s home designs”

**Small Enough to Know You... Large Enough to Serve you!**

# FUTON COLLECTION

- *All arm styles can be paired with either standard side operating body, or upgraded to Moonglider front operating body*
- *Hardwood construction*
- *Multiple size options*
- *5 year warranty*





*Winter Futon*





# ALBANY



Arm Set: BA-ABY-xx  
 Moonglider Full Body: BMG-FUL-xx  
 Moonglider Queen Body: BMG-QEN-xx  
 Standard Full Body: BJ-FUL-xx  
 Standard Queen Body: BJ-QEN-xx

## Options



Shown in CHO



Shown in CH



Shown in NA

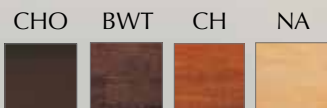
## Accessories



Rolling Storage Drawer:  
 BD-FUL-xx  
 BD-QEN-xx



# AUTUMN



Arm Set: BA-AUT-xx  
 Standard Full Body: BJ-FUL-xx  
 Standard Queen Body: BJ-QEN-xx  
 Moonglider Full Body: BMG-FUL-xx  
 Moonglider Queen Body: BMG-QEN-xx

## Options



Shown in CHO



Shown in BWT



Shown in CH



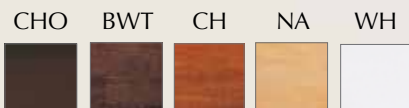
Shown in NA

## Accessories



Rolling Storage Drawer:  
 BD-FUL-xx  
 BD-QEN-xx

# EUREKA



Arm Set: BA-EUR-xx  
 Standard Full Body: BJ-FUL-xx  
 Standard Queen Body: BJ-QEN-xx  
 Moonglider Full Body: BMG-FUL-xx  
 Moonglider Queen Body: BMG-QEN-xx

## Options



Shown in CHO



Shown in CH



Shown in NA



Shown in WH

## Accessories



Rolling Storage Drawer:  
 BD-FUL-xx  
 BD-QEN-xx



# FUJI



Arm Set: BA-FUJ-xx  
 Standard Full Body: BJ-FUL-xx  
 Standard Queen Body: BJ-QEN-xx  
 Moonglider Full Body: BMG-FUL-xx  
 Moonglider Queen Body: BMG-QEN-xx

## Options



Shown in CHO



Shown in CH

## Accessories



Rolling Storage Drawer:  
 BD-FUL-xx  
 BD-QEN-xx

# KINGSTON



Arm Set: BA-KIN-xx  
 Standard Full Body: BJ-FUL-xx  
 Standard Queen Body: BJ-QEN-xx  
 Moonglider Full Body: BMG-FUL-xx  
 Moonglider Queen Body: BMG-QEN-xx

## Options



Shown in CHO



Shown in BWT



Shown in NA

## Accessories



Rolling Storage Drawer:  
 BD-FUL-xx  
 BD-QEN-xx

# MONTEREY



CHO

CH



Arm Set: LKA-MON-xx  
Full Body: LKB-FUL- xx  
Queen Body: LKB-QEN-xx

## Options



Shown in CHO



Shown in CH

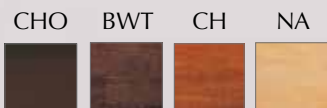
## Accessories



Rolling Storage Drawer:  
BD-FUL-xx  
BD-QEN-xx



# NAPLES



\*Built-in side table

Arm Set: BA-NAP-xx  
 Standard Full Body: BJ-FUL-xx  
 Standard Queen Body: BJ-QEN-xx  
 Moonglider Full Body: BMG-FUL-xx  
 Moonglider Queen Body: BMG-QEN-xx

## Options



Shown in CHO



Shown in BWT



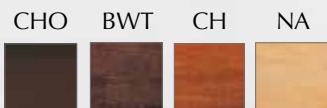
Shown in NA

## Accessories



Rolling Storage Drawer:  
 BD-FUL-xx  
 BD-QEN-xx

# PORTOFINO



\*Armrest storage

Arm Set: BA-POR-xx  
 Standard Full Body: BJ-FUL-xx  
 Standard Queen Body: BJ-QEN-xx  
 Moonglider Full Body: BMG-FUL-xx  
 Moonglider Queen Body: BMG-QEN-xx

## Options



Shown in CHO



Shown in CH



Shown in NA

## Accessories



Rolling Storage Drawer:  
 BD-FUL-xx  
 BD-QEN-xx

# RUSKIN



CHO

CH



Arm Set: LKA-RUS-xx  
Full Body: LKB-FUL- xx  
Queen Body: LKB-QEN-xx

## Options



Shown in CHO



Shown in CH

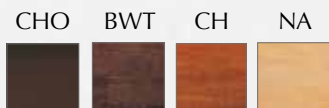
## Accessories



Rolling Storage Drawer:  
BD-FUL-xx  
BD-QEN-xx



# SOLSTICE



Arm Set: BA-SOL-xx  
 Standard Full Body: BJ-FUL-xx  
 Standard Queen Body: BJ-QEN-xx  
 Moonglider Full Body: BMG-FUL-xx  
 Moonglider Queen Body: BMG-QEN-xx

## Options



Shown in CHO



Shown in BWT



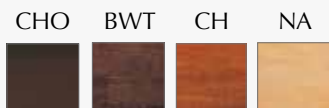
Shown in NA

## Accessories



Rolling Storage Drawer:  
 BD-FUL-xx  
 BD-QEN-xx

# SUNRISE



\*Built-in side table

Arm Set: BA-SUN-xx  
 Standard Full Body: BJ-FUL-xx  
 Standard Queen Body: BJ-QEN-xx  
 Moonglider Full Body: BMG-FUL-xx  
 Moonglider Queen Body: BMG-QEN-xx

## Options



Shown in CHO



Shown in CH



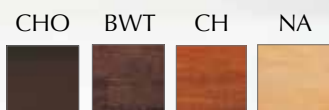
Shown in NA

## Accessories



Rolling Storage Drawer:  
 BD-FUL-xx  
 BD-QEN-xx

# TRINITY



Arm Set: BA-TRI-xx  
 Standard Full Body: BJ-FUL-xx  
 Standard Queen Body: BJ-QEN-xx  
 Moonglider Full Body: BMG-FUL-xx  
 Moonglider Queen Body: BMG-QEN-xx

## Options



Shown in CHO



Shown in CH



Shown in NA

## Accessories



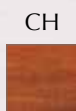
Rolling Storage Drawer:  
 BD-FUL-xx  
 BD-QEN-xx



# VENICE



Arm Set: BA-VNC-xx  
 Standard Full Body: BJ-FUL-xx  
 Standard Queen Body: BJ-QEN-xx  
 Moonglider Full Body: BMG-FUL-xx  
 Moonglider Queen Body: BMG-QEN-xx



## Options



Shown in Cherry

## Accessories



Rolling Storage Drawer:  
 BD-FUL-xx  
 BD-QEN-xx

# WINCHESTER



Arm Set: BA-WNC-xx  
 Standard Full Body: BJ-FUL-xx  
 Standard Queen Body: BJ-QEN-xx  
 Moonglider Full Body: BMG-FUL-xx  
 Moonglider Queen Body: BMG-QEN-xx

## Options



Shown in CHO



Shown in BWT



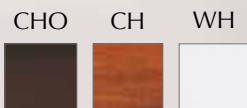
Shown in NA

## Accessories



Rolling Storage Drawer:  
 BD-FUL-xx  
 BD-QEN-xx

# WINSTON



\*Built-in side table

Arm Set: LKA-WIN-xx  
Full Body: LKB-FUL- xx  
Queen Body: LKB-QEN-xx

## Options



Shown in CHO



Shown in CH

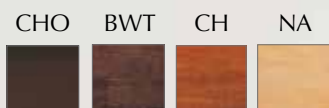
## Accessories



Rolling Storage Drawer:  
BD-FUL-xx  
BD-QEN-xx



# WINTER



Arm Set: BA-WNT-xx  
 Standard Full Body: BJ-FUL-xx  
 Standard Queen Body: BJ-QEN-xx  
 Moonglider Full Body: BMG-FUL-xx  
 Moonglider Queen Body: BMG-QEN-xx

## Options



Shown in CHO



Shown in CH



Shown in NA

## Accessories



Rolling Storage Drawer:  
 BD-FUL-xx  
 BD-QEN-xx

# *Summer Breeze*



*Bali Futon*

# BALI



BDR

SKY



Arm Set: LKA-BALI-xx  
Full Body: LKB-FUL-xx  
Queen Body: LKB-QEN-xx

## Options



Shown in SKY

## Accessories



Rolling Storage Drawer:  
LKD-DWR2-FUL-xx  
LKD-DWR2-QEN-xx



# KEY WEST



WH



Arm Set: BA-KEY-WH  
 Standard Full Body: BJ-FUL-WH  
 Standard Queen Body: BJ-QEN-WH  
 Moonglider Full Body: BMG-FUL-WH  
 Moonglider Queen Body: BMG-QEN-WH

## Options



## Accessories



Rolling Storage Drawer:  
 BD-FUL-xx  
 BD-QEN-xx

# RALEIGH



\*Built-in side table

Arm Set: LKA-RAL-xx  
Full Body: LKB-FUL-xx  
Queen Body: LKB-QEN-xx

## Options



Shown in SKY

## Accessories



Rolling Storage Drawer:  
LKD-DWR2-FUL-xx  
LKD-DWR2-QEN-xx





# FUTON MATTRESSES

- *Made in U.S.A.*
- *Available in multiple sizes*
- *Available in multiple fabric options*
- *Mattresses available with sewn on covers*
- *Foam and cotton mattresses available in multiple thicknesses*
- *Traditional innerspring as well as individually pocketed coil innerspring available*

# *The Mattress*



# FUTON MATTRESSES



Premium 6" *Available in black only*

**Full:** MAT-FUL-DBL-BLK-PREM-6

**Queen:** MAT-QEN-DBL-BLK-PREM-6

Premium 8" *Available in black only*

**Full:** MAT-FUL-DBL-BLK-PREM-8

**Queen:** MAT-QEN-DBL-BLK-PREM-8



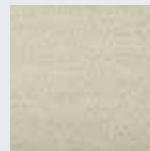
Premium 10" *Shown in natural*

**Full:** MAT-FUL-NAT-PREM-10

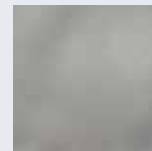
**Full:** MAT-FUL-GRY-PREM-10

**Queen:** MAT-QEN-NAT-PREM-10

**Queen:** MAT-QEN-GRY-PREM-10



Natural NAT



Gray GRY



Premium Innerspring *Shown in Gray*

**Full:** MAT-FUL-IS-5-NAT-PREMIUM

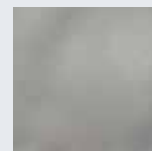
**Full:** MAT-FUL-IS-5-GRY-PREMIUM

**Queen:** MAT-QEN-IS-5-NAT-PREMIUM

**Queen:** MAT-QEN-IS-5-GRY-PREMIUM



Natural NAT



Gray GRY



# FUTON MATTRESSES



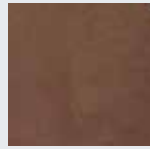
## Oceanside-2

**Full - Dark Brown:** MAT-FUL-OCE2-DKB

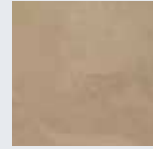
**Full - Mocha:** MAT-FUL-OCE2-MOC

**Full - Navy:** MAT-FUL-OCE2-NAV

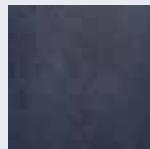
**Full - Charcoal:** MAT-FUL-OCE2-CC



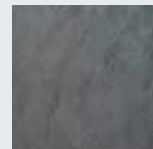
Dark Brown DKB



Mocha MOC



Navy NAV



Charcoal CC

# *Product Specs and Dimensions*

