

**FLEXSTEEL**<sup>®</sup>  
Industries

**October 2024 High Point Market**  
As Seen At Market

Latitudes  
New Introductions



1645 ALEXANDER



706-03



706-71



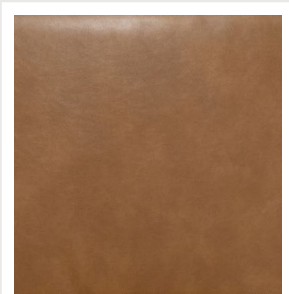
FLEXSTEEL®



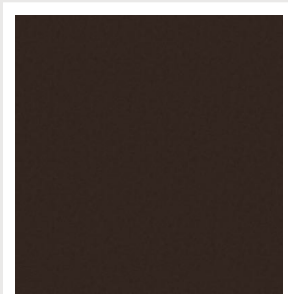
1158 ALISTER



326-11



734-72



946-71





1823 ARTEMIS



886-01



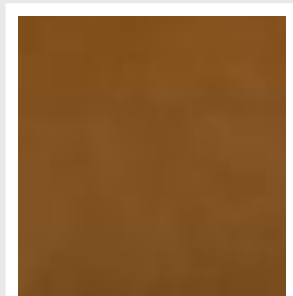
886-72



FLEXSTEEL®



1354 AUBREY



734-71

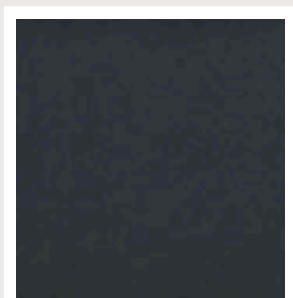


141-02

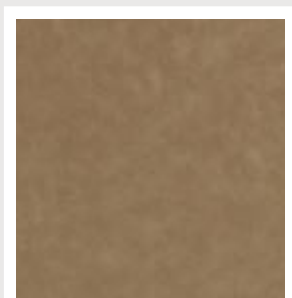
FLEXSTEEL®



1427 CAMDEN



732-40



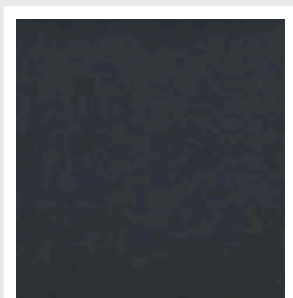
732-72



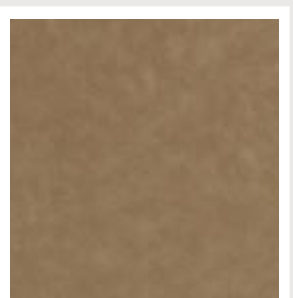
FLEXSTEEL®



1427 CAMDEN



732-40



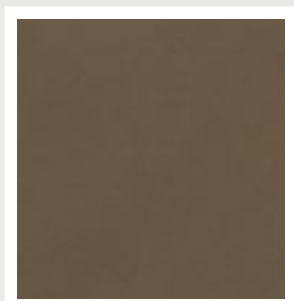
732-72



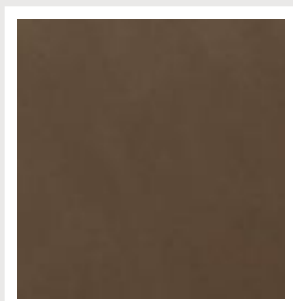
FLEXSTEEL®



Q3966 DIGBY



715-70



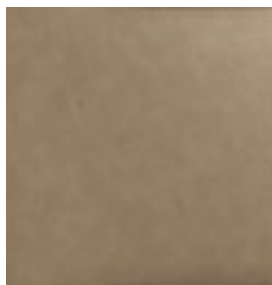
734-01

FLEXSTEEL®

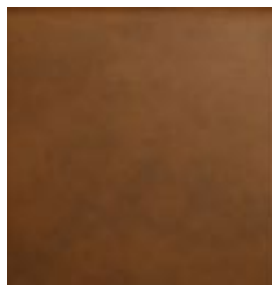




Q3010 FINLEY



946-78

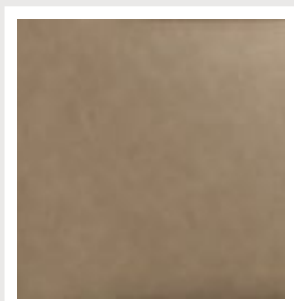


705-72

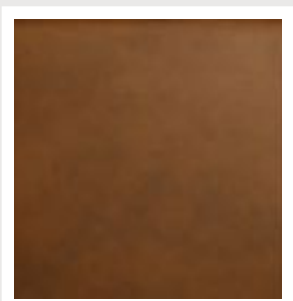
FLEXSTEEL®



Q3010 FINLEY



946-78

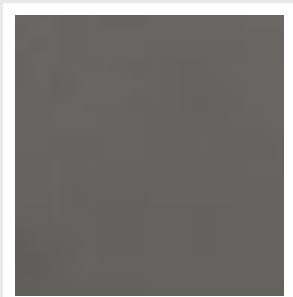


705-72

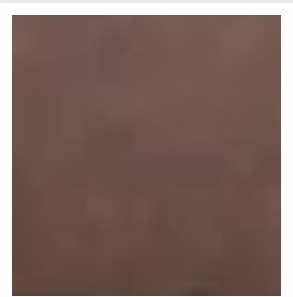
FLEXSTEEL®



1872 HAYES



114-02



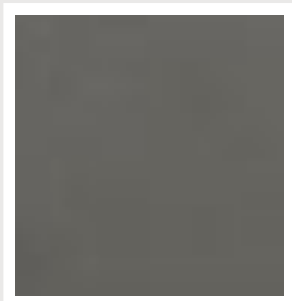
117-71



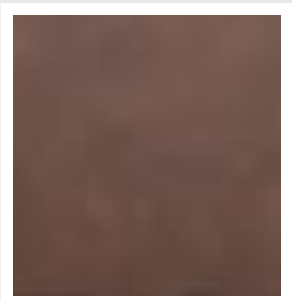
Concealed Headrest



1872 HAYES



114-02



117-71



Concealed Headrest

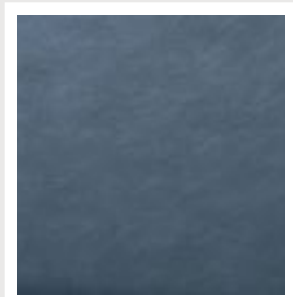
FLEXSTEEL®



1750 OASIS



705-70



734-40

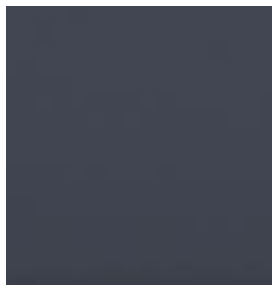
FLEXSTEEL®



1845 SAWYER



009-01



009-42



Cooler Console

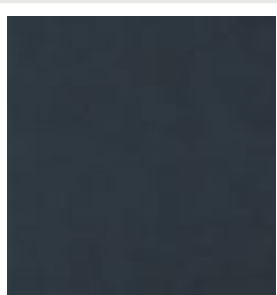
FLEXSTEEL®



1524 VIEW



050-01



050-40



050-70

FLEXSTEEL®



1592 VERNON



FLEXSTEEL®





1592 VERNON



386-40



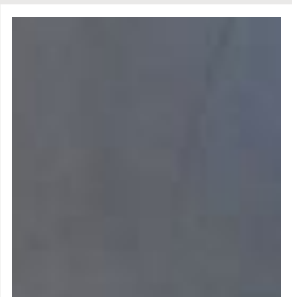
386-01



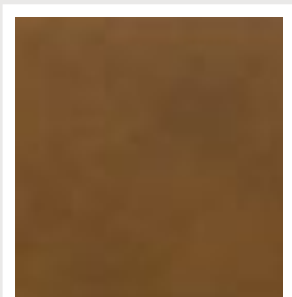
FLEXSTEEL®



1596 WYATT



705-02



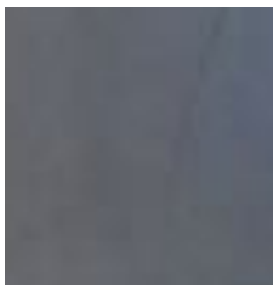
705-72



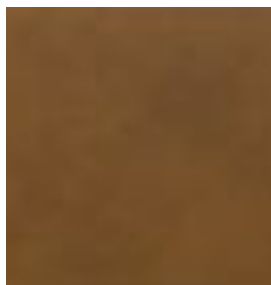
2 cupholders on each side on sides of arms



1596 WYATT



705-02



705-72



2 cupholders on each  
side on sides of arms

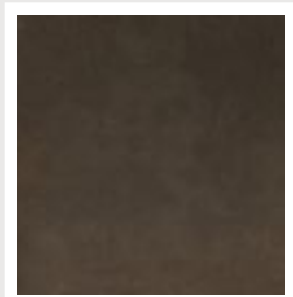
FLEXSTEEL®



1587 CARTER



886-02

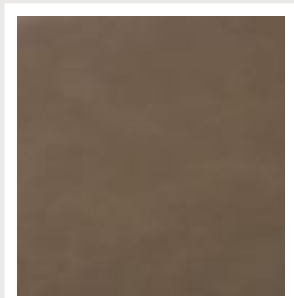


886-72

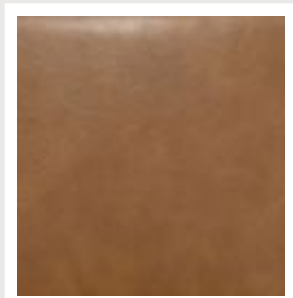
FLEXSTEEL®



1865 ARIA



734-01



734-72

FLEXSTEEL®