

# ZAMBELLI *Enotech*

Since 1888

## Listino Prezzi Price List 2023



Via dell'Artigianato, 70/72 36043 Camisano Vic. (VI) Italy  
Tel. +39 0444.719402 - Fax +39 0444.719423  
Web site: [www.zambellienotech.com](http://www.zambellienotech.com)  
E-mail: [info@zambellienotech.com](mailto:info@zambellienotech.com)

## CONDIZIONI GENERALI DI VENDITA

### **PREZZI**

I PREZZI DELLE NOSTRE MACCHINE SONO QUELLI INDICATI NEL NOSTRO LISTINO IN VIGORE.

ESSI POTRANNO ESSERE VARIATI IN QUALUNQUE MOMENTO SENZA ALCUN OBBLIGO DI PREAVVISO DA PARTE NOSTRA, ANNULLANDO ANCHE LA VALIDITA' DEL PRESENTE LISTINO.

### **CONFERMA D'ORDINE**

L'ordine rimessoci è subordinato all'approvazione della nostra Ditta. La merce si intende consegnata Franco nostra fabbrica di Camisano Vicentino (VI). I prezzi delle nostre merci sono quelli indicati nel nostro Listino di Vendita in vigore al momento della consegna.

### **TERMINE DI CONSEGNA**

Il termine di consegna è puramente indicativo. Nostri eventuali ritardi non producono né recesso del contratto, né rifusione di danni o interessi di mora.

### **COLLAUDO E RECLAMI**

Il collaudo delle attrezzature viene effettuato presso la nostra ditta.

Ogni eventuale reclamo dovrà pervenire alla Zambelli Enotech srl entro otto giorni dal ricevimento della merce. Il reclamo non esonera l'acquirente dall'obbligo di ritirare altra merce regolarmente ordinata né di ridurre o sospendere i pagamenti che si è obbligato a fare.

NESSUNA RESPONSABILITÀ VIENE ASSUNTA DALLA FORNITRICE PER DANNI A PERSONE, COSE ED ANIMALI DERIVANTI DALL'USO IMPROPRIO O PER MODIFICHE APPORTATE ALLE MACCHINE SU ESPLICITA RICHIESTA DEL CLIENTE.

Le caratteristiche tecniche riportate nel presente listino sono indicative. Per ogni contestazione unico Foro competente è quello di Vicenza.

L'acquirente con l'ordine accetta le suddette condizioni generali di vendita.

### **PAGAMENTO**

I pagamenti dovranno essere effettuati al domicilio della Fornitrice:

Zambelli Enotech srl – 36043 CAMISANO VIC. (VI). L'inosservanza delle condizioni di pagamento da parte dell'acquirente dà alla Fornitrice il diritto di sospendere i suoi obblighi di garanzia o di risolvere il contratto con semplice comunicazione.

Trascorso il termine fissato per il pagamento decorreranno gli interessi di mora.

## GENERAL TERMS OF SALE

### **PRICES**

THE PRICES OF OUR MACHINES ARE THE PRICES SHOWED IN OUR PRICE LIST.

THE PRICES MAY BE CHANGED IN EVERY MOMENT WITHOUT OBLIGE OF PRE-ADVISE FROM US, CANCELLING ALSO THE VALIDITY OF THE PRESENT PRICE LIST.

### **CONFIRM OF ORDER**

The order made to us is submitted to the approval of our firm. The goods are intended EX-WORKS to our factory of CAMISANO VICENTINO, VICENZA. The prices of our machines are the prices indicated on our Price List valid on the moment of consign.

### **TERM OF DELIVERY**

The terms of delivery are purely indicatives. Our possible delays on deliveries do not produce withdrawal of the contract, reimbursement of damages or interest for delay on delivery.

### **TESTING AND CLAIMS**

The test of the machines is done by our factory.

Any incidental claim has to be sent to Zambelli Enotech srl till eight days after receipt of the goods. The claim does not exonerate the buyer from the obligation of retire the goods regularly ordered and to reduce or suspend the payments that is obligated to do.

NO RESPONSIBILITY IS TAKEN FROM THE SUPPLIER FOR DAMAGES TO PEOPLE, OBJECTS AND ANIMALS FROM THE IMPROPER USE OR MODIFICATIONS MADE ON THE MACHINES ON EXPLICIT REQUESTS OF THE CUSTOMER.

The technical characteristics written in the present price list are approximated. For each controversy the place of jurisdiction is in Vicenza.

The purchaser accept the above mentioned general terms of sale.

### **PAYMENT**

Zambelli Enotech srl – 36043 CAMISANO VIC. (VI). The inobservance of the terms of sale from the buyer gives to the supplier the right to suspend its guarantee obligation or to rescind the contract with a simple communication.

After the settled term of payment will start the payments on arrears.

**RACCORDI PER POMPE TIFONE**  
**FITTINGS FOR TIFONE PUMP**

POMPA PUMPS	RACCORDO STANDARD STANDARD FITTING	ALTRI RACCORDI STANDARD OTHER STANDARD FITTINGS	RACCORDI CON SUPPLEMENTO PAYEMENT FITTINGS 30,00÷40,00 € NETTI 30,00÷40,00 € NET
<b>T 12</b>	<b>PORTAGOMMA Ø20</b> FITTING (HOSE HOLDER) Ø20	TRI CLAMP 1" – TRI CLAMP 1" ½ DIN 20 – DIN 25 – BS 25 – BS 38	
<b>T 25</b>	<b>PORTAGOMMA Ø25</b> FITTING (HOSE HOLDER) Ø25	TRI CLAMP 1" – TRI CLAMP 1" ½ DIN 25 – DIN 32 – BS 25 – BS 38	DIN 40 – MACON 40
<b>T 40</b>	<b>GAROLLA 40</b>	TRI CLAMP 1" ½ – DIN 25 – DIN 32 – DIN 40 – MACON 40 – BS 38 – 5/4 AUSTRIA	
<b>T 70</b>	<b>GAROLLA 40</b>	TRI CLAMP 1" ½ – TRI CLAMP 2" – DIN 32 – DIN 40 – MACON 40 – MACON 50 – BS 38 – BS 51 – 5/4 AUSTRIA	DIN 50
<b>T 110</b>	<b>GAROLLA 50</b>	TRI CLAMP 2" – DIN 40 – DIN 50 – MACON 40 – MACON 50 – BS 30 – BS 51	TRI CLAMP 1" ½
<b>T 180</b>	<b>GAROLLA 60</b>	TRI CLAMP 2" – TRI CLAMP 2" ½ – DIN 50 – MACON 50 – BS 51 – BS 63	DIN 60
<b>T 250</b>	<b>GAROLLA 80</b>	TRI CLAMP 2" ½ – DIN 50 – DIN 60 – DIN 65	TRI CLAMP 3" – MACON 50 – MACON 70 – BS 63 – BS 76
<b>T 500</b>	<b>GAROLLA 80</b>	TRI CLAMP 3" – DIN 65 – DIN 80 – MACON 70 – BS 76	MACON 80
<b>T 800</b>	<b>GAROLLA 100</b>	TRI CLAMP 3" – TRI CLAMP 4" – DIN 100 – MACON 80 – BS 76	

**IL PREZZO DI RACCORDI NON INCLUSI NELLA TABELLA VERRÀ VALUTATO ALLA RICHIESTA**  
**THE PRICE OF FITTINGS NOT INCLUDED IN THE TABLE WILL BE VALUED ON REQUEST**

<b>RACCORDERIA GAROLLA</b> GAROLLA FITTING	
RACCORDO – FITTING	PREZZO – PRICE €
<b>PORTAGOMMA GAROLLA 40</b> GAROLLA FITTING (HOSE HOLDER) 40	13,90
<b>MORSETTO GAROLLA 40</b> GAROLLA CLAMP 40	11,20
<b>GUARNIZIONE GAROLLA 40</b> GAROLLA GASKET 40	1,90
<b>PORTAGOMMA GAROLLA 50</b> GAROLLA FITTING (HOSE HOLDER) 50	15,50
<b>MORSETTO GAROLLA 50</b> GAROLLA CLAMP 50	13,40
<b>GUARNIZIONE GAROLLA 50</b> GAROLLA GASKET 50	2,30
<b>PORTAGOMMA GAROLLA 60</b> GAROLLA FITTING (HOSE HOLDER) 60	17,40
<b>MORSETTO GAROLLA 60</b> GAROLLA CLAMP 60	13,90
<b>GUARNIZIONE GAROLLA 60</b> GAROLLA GASKET 60	2,60
<b>PORTAGOMMA GAROLLA 80</b> GAROLLA FITTING (HOSE HOLDER) 80	21,00
<b>MORSETTO GAROLLA 80</b> GAROLLA CLAMP 80	14,00
<b>GUARNIZIONE GAROLLA 80</b> GAROLLA GASKET 80	2,50
<b>PORTAGOMMA GAROLLA 100</b> GAROLLA FITTING (HOSE HOLDER) 100	27,00
<b>MORSETTO GAROLLA 60</b> GAROLLA CLAMP 100	20,00
<b>GUARNIZIONE GAROLLA 100</b> GAROLLA GASKET 100	3,90

<b>RACCORDERIA GAROLLA</b> GAROLLA FITTING	
RACCORDO – FITTING	PREZZO – PRICE €
<b>PORTAGOMMA GAROLLA 120</b> GAROLLA FITTINGS (HOSE HOLDER) 120	55,00
<b>MORSETTO GAROLLA 120</b> GAROLLA CLAMP 120	22,50
<b>GUARNIZIONE GAROLLA 120</b> GAROLLA GASKET 120	5,20
<b>RIDUZIONE GAROLLA 50-40</b> GAROLLA FITTING ADAPTER 50-40	27,60
<b>RIDUZIONE GAROLLA 60-40</b> GAROLLA FITTING ADAPTER 60-40	30,20
<b>RIDUZIONE GAROLLA 60-50</b> GAROLLA FITTING ADAPTER 60-50	30,20
<b>RIDUZIONE GAROLLA 80-50</b> GAROLLA FITTING ADAPTER 80-50	45,00
<b>RIDUZIONE GAROLLA 80-60</b> GAROLLA FITTING ADAPTER 80-60	45,00
<b>RIDUZIONE GAROLLA 100-60</b> GAROLLA FITTING ADAPTER 100-60	57,20
<b>RIDUZIONE GAROLLA 100-80</b> GAROLLA FITTING ADAPTER 100-80	57,20
<b>RIDUZIONE GAROLLA 120-80</b> GAROLLA FITTING ADAPTER 120-80	59,80
<b>RIDUZIONE GAROLLA 120-100</b> GAROLLA FITTING ADAPTER 120-100	59,80

## POMPA A GIRANTE FLESSIBILE TIFONE

### "T 12" "T 25"

#### CARATTERISTICHE STANDARD

- AUTOADESCANTE
- IN ACCIAIO INOX AISI 304
- REVERSIBILITA' DEL FLUSSO (DX-SX)
- TENUTA A PARAOLIO

#### TIFONE IMPELLER PUMP

### "T 12" "T 25"

#### TECHNICAL FEATURES

- SELF-PRIMING
- MADE IN STAINLESS STEEL AISI 304
- AMBIVALENT SUCTION (RIGHT-LEFT)
- OIL SEAL

<b>T 12: PORTATA MASSIMA</b>	<b>1200 Lt/h</b>
MAX FLOWRATE	1200 Lt/h
<b>T 25: PORTATA MASSIMA</b>	<b>2500 Lt/h</b>
MAX FLOWRATE	2500 Lt/h

T 25 SPECIAL



T 25 EXPORT



T 12 MANICO



T 25 MANICO + BYPASS

COD.	ARTICOLO – ITEM		PRICE €
5312	<b>T 12 MANICO</b> – Senza By Pass - portagomma Ø 20 mm	3-phase	480,00
5313	T 12 WITH HANDLE – Without By Pass - Fittings (hose holder) Ø20 mm	1-phase	494,00
5312-R	<b>T 12 PER RIEMPITRICE</b>	3-phase	482,00
5313-R	T 12 FOR FILLER	1-phase	496,00

COD.	ARTICOLO – ITEM		PRICE €
5900	<b>T 25 MANICO</b> – Senza By Pass - Portagomma Ø 25 mm	3-phase	590,00
5901	T 25 WITH HANDLE – Without By Pass - Fittings (hose holder) Ø25mm 900 rpm	1-phase	622,00
5919	<b>T 25 H.SPEED MANICO</b> – Senza By Pass - Portagomma Ø 25 mm	3-phase	570,00
5920	T 25 H.SPEED W. HANDLE – Without By Pass - Fittings (hose holder) Ø25mm 1400 rpm	1-phase	602,00
5911	<b>T 25 EXPORT</b> – Senza By Pass - Portagomma Ø 25 mm	3-phase	653,00
5912	T 25 EXPORT – Without By Pass - Fittings (hose holder) Ø25mm 900 rpm	1-phase	685,00
5925	<b>T 25 H.SPEED EXPORT</b> – Senza By Pass - Portagomma Ø 25 mm	3-phase	614,00
5926	T 25 H.SPEED EXPORT – Without By Pass - Fittings (hose holder) Ø25mm 1400 rpm	1-phase	646,00
5906	<b>T 25 CARR. SPECIAL</b> – Senza By Pass - Portagomma Ø 25 mm	3-phase	839,00
5907	T 25 TROLLEY SPECIAL – Without By Pass - Fittings (hose holder) Ø25mm 900 rpm	1-phase	878,00
5900-R	<b>T 25 PER RIEMPITRICE</b> – Senza By Pass - Condensatore disgiunto	3-phase	646,00
5901-R	T 25 FOR FILLER – Without By Pass -With disjointed capacitor 900 rpm	1-phase	679,00
BP25	<b>BY PASS</b> – Solo per T 25 BY PASS – Only T 25		40,00

**DIFFERENZA PER RACCORDI SPECIALI A POMPA € 30,00 NETTI – DIFFERENZA MOTORE VOLTAGGIO SPEC. € 25,00 NETTI**

FOR SPECIAL PUMP FITTINGS ADD 30,00 € NET – THE DIFFERENCE FOR SPECIAL VOLTAGE MOTOR ADD 25,00 € NET

**DIFFERENZA PER MOTORI 110V 45,00 € NETTI – FOR 110V MOTOR ADD 45,00 € NET**

**POMPA A GIRANTE FLESSIBILE TIFONE**  
**"T 25 VM" "T 25 INV"**  
 CARATTERISTICHE STANDARD

- AUTOADESCANTE
- IN ACCIAIO INOX AISI 304
- CON E SENZA BY PASS
- REVERSIBILITA' DEL FLUSSO (DX-SX)
- TENUTA A PARAOLIO
- MOTORIZZAZIONI:
  - CON VARIATORE MECCANICO DI GIRI 170-900 rpm
  - CON INVERTER

**TIFONE IMPELLER PUMP**  
**"T 25 VM" "T 25 INV"**  
 TECHNICAL FEATURES

- SELF-PRIMING
- MADE IN STAINLESS STEEL AISI 304
- WITH OR WITHOUT BY PASS
- AMBIVALENT SUCTION (RIGHT-LEFT)
- OIL SEAL
- MOTORIZED WITH:
  - MECHANICAL SPEED VARIATOR 170-900 rpm
  - FREQUENCY DRIVE CONTROLLER

**T 25: PORTATA MASSIMA**  
 MAX FLOWRATE

**2500 Lt/h**  
 2500 Lt/h



**T 25 VM170**

**T 25 INV**

COD.	ARTICOLO – ITEM	PRICE €
5915	<b>T 25 VM170</b> – Variatore meccanico - Senza By Pass - portagomma Ø 25 mm	3-phase 1.070,00
5916	<i>T 25 VM170 – Mechanical variator - Without By Pass - Fittings (hose holder) Ø25mm</i>	1-phase 1.120,00
5913	<b>T 25 INV</b> – Inverter - Senza By Pass - portagomma Ø 25 mm	3-phase 1.770,00
5914	<i>T 25 INV – Frequency drive controller - Without By Pass - Fittings (hose holder) Ø25mm</i>	1-phase 1.800,00
5917	<b>T 25 INV/RF</b> – Inverter con radiocomando a filo (cavo 10m) Senza By Pass - portagomma Ø 25 mm	3-phase 1.752,00
5918	<i>T 25 INV/RF – Frequency drive controller with cable remote control (cable 10m) Without By Pass - Fittings (hose holder) Ø25mm</i>	1-phase 1.858,00
BP25	<b>BY PASS</b>	40,00

**VASCHETTA "VR-TIFONE"**

Vaschetta multiuso con coclea e motoriduttore per prodotti densi e semi densi applicabile alle pompe serie "Tifone". Dimensioni vasca 340x340x220(h). Da abbinare alle pompe Tifone a partire dalla Tifone T 70.

**COLLECTING TANK WITH HOPPER "VR-TIFONE"**

Multipurpose hopper for medium and high density products, connectable to our "Tifone" pumps. Dimensions 340x340x220(h) To be used with Tifone pumps from mod. T 70.



**VR-TIFONE**

COD.	ARTICOLO – ITEM	PRICE €
3030	<b>VR-TIFONE</b>	3-phase 610,00
3031	<i>VR-TIFONE</i>	1-phase 626,00

**DIFFERENZA PER RACCORDI SPECIALI A POMPA € 30,00 NETTI – DIFFERENZA MOTORE VOLTAGGIO SPEC. € 25,00 NETTI**  
 FOR SPECIAL PUMP FITTINGS ADD 30,00 € NET – FOR SPECIAL VOLTAGE MOTOR ADD 25,00 € NET  
**DIFFERENZA PER MOTORI 110V 45,00 € NETTI – FOR 110V MOTOR ADD 45,00 € NET**

## POMPA A GIRANTE FLESSIBILE TIFONE "T 40"

### CARATTERISTICHE STANDARD

- AUTOADESCANTE
- IN ACCIAIO INOX AISI 304
- SENZA BY PASS
- REVERSIBILITA' DEL FLUSSO (DX-SX)
- 900 rpm
- TENUTA A PARAOLIO
- RACCORDO STANDARD GAROLLA Ø40
- OPTIONAL: BY PASS

### IMPELLER PUMP TIFONE "T 40"

#### TECHNICAL FEATURES

- SELF-PRIMING
- MADE IN STAINLESS STEEL AISI 304
- WITHOUT BY PASS
- AMBIVALENT SUCTION (RIGHT-LEFT)
- 900 rpm
- OIL SEAL
- GAROLLA Ø40 STANDARD FITTINGS
- OPTIONAL: BY PASS

**T 40: PORTATA MASSIMA**  
MAX FLOWRATE

**5300 Lt/h**  
5300 Lt/h

**T 40 CARRELLO + BYPASS**



**T 40 MANICO + BYPASS**

COD.	ARTICOLO – ITEM		PRICE €
5700	<b>T 40 MANICO</b> – Senza By Pass	3-phase	697,00
5701	T 40 WITH HANDLE – Without By Pass	1-phase	775,00
5704	<b>T 40 CARRELLO EXPORT</b> – Senza By Pass	3-phase	742,00
5705	T 40 WITH EXPORT TROLLEY – Without By Pass	1-phase	819,00
BP40	<b>BY PASS</b>		40,00

**DIFFERENZA PER RACCORDI SPECIALI A POMPA € 30,00 NETTI – DIFFERENZA MOTORE VOLTAGGIO SPEC. € 25,00 NETTI**  
FOR SPECIAL PUMP FITTINGS ADD 30,00 € NET – FOR SPECIAL VOLTAGE MOTOR ADD 25,00 € NET  
**DIFFERENZA PER MOTORI 110V 45,00 € NETTI – FOR 110V MOTOR ADD 45,00 € NET**

## POMPA A GIRANTE FLESSIBILE TIFONE "T 70"

### CARATTERISTICHE STANDARD

- AUTOADESCANTE
  - IN ACCIAIO INOX AISI 304
  - CON BY PASS
  - REVERSIBILITA' DEL FLUSSO (DX-SX)
  - TENUTA MECCANICA / TENUTA A PARAOLIO (MODELLO FL)
  - RACCORDO STANDARD GAROLLA Ø40
  - CARRELLO INOX
- OPTIONAL: RADIOCOMANDO ON/OFF INVERSIONE DX/SX

### IMPELLER PUMP TIFONE "T 70"

#### TECHNICAL FEATURES

- SELF-PRIMING
  - MADE IN STAINLESS STEEL AISI 304
  - WITH BY PASS
  - AMBIVALENT SUCTION (RIGHT-LEFT)
  - MECHANICAL SEAL / OIL SEAL (FL MODEL)
  - GAROLLA Ø40 STANDARD FITTINGS
  - STAINLESS STEEL TROLLEY
- OPTIONAL: REMOTE RADIO CONTROLLER: ON/OFF REVERSE SUCTION RIGHT/LEFT

**T 70: PORTATA MASSIMA  
MAX FLOWRATE**

**6800 Lt/h  
6800 Lt/h**

T 70 VM



T 70 ICDR



T 70 A2V



T 70 FL



COD.	ARTICOLO – ITEM		PRICE €
5852	<b>T 70 FL</b> – Flangiata 1 velocità 900 rpm (Tenuta a paraolio)	3-phase	890,00
5853	TIFONE T 70 FL – FLANGED 1 SPEED 900 rpm (Oil seal)	1-phase	941,00
5254	<b>T 70 A2V</b> – Assiale 2 velocità 435/870 rpm	3-phase	1.784,00
5555	T 70 A2V – Axial 2 speeds 435/870 rpm		
5352	<b>T 70 VM155</b> – Motovariatore 155÷1000 rpm	3-phase	2.010,00
5353	T 70 VM155 – Motovariator 155÷1000 rpm	1-phase	2.067,00
5362	<b>T 70 VM0</b> – Motovariatore 0÷900 rpm	3-phase	2.571,00
5363	T 70 VM0 – Motovariator 0÷900 rpm	1-phase	2.627,00
5931	<b>T 70 ICDR</b> – Inverter con radiocomando (modello ECO)	3-phase	3.465,00
5932	T 70 ICDR – Freq. drive controller with remote radio-control (eco model)	1-phase	3.495,00
RAS	<b>RADIOCOMANDO MOD. ECO</b> – Per T 70 A2V-VM0-VM155 REMOTE RADIO CONTROLLER ECO MODEL – For T 70 A2V-VM0-VM155		750,00
RTL	<b>RADIOCOMANDO LUNGO RAGGIO MOD. LR</b> – Solo T 70 ICDR LONG RANGE REMOTE RADIO CONTROLLER LR MODEL – Only T 70 ICDR		690,00
RFP	<b>RADIOCOMANDO MOD. FP</b> – Per zone con disturbi di frequenza REMOTE RADIO CONTROLLER FP MODEL- For areas with frequency interferences	Solo ICDR Only ICDR	975,00
SML	<b>VUOTOSTATO</b> – Sensore assenza liquido per T 70 A2V-VM0-VM155 VACUUM SWITCH – Sensor against dry running for T 70 A2V-VM0-VM155		700,00
SML-I	<b>VUOTOSTATO E RADIOCOMANDO LR</b> – per T 70 ICDR VACUUM SWITCH AND LONG RANGE RADIO CONTROLLER – for T 70 ICDR		1.375,00

**DIFFERENZA PER RACCORDI SPECIALI A POMPA € 30,00 NETTI – DIFFERENZA MOTORE VOLTAGGIO SPEC. € 29,00 NETTI**  
 FOR SPECIAL PUMP FITTINGS ADD 30,00 € NET – FOR SPECIAL VOLTAGE MOTOR ADD 29,00 € NET  
**DIFFERENZA PER MOTORI 110V 45,00 € NETTI – FOR 110V MOTOR ADD 45,00 € NET**

## POMPA A GIRANTE FLESSIBILE TIFONE "T 110"

### CARATTERISTICHE STANDARD

- AUTOADESCANTE
  - IN ACCIAIO INOX AISI 304
  - SENZA BY PASS
  - REVERSIBILITA' DEL FLUSSO (DX-SX)
  - TENUTA MECCANICA / TENUTA A PARAOLIO (MODELLO FL)
  - RACCORDO STANDARD GAROLLA Ø50
  - CARRELLO INOX
- OPTIONAL: BY PASS  
OPTIONAL: RADIOCOMANDO ON/OF INVERSIONE DX/SX

### IMPELLER PUMP TIFONE "T 110" TECHNICAL FEATURES

- SELF-PRIMING
  - MADE IN STAINLESS STEEL AISI 304
  - WITHOUT BY PASS
  - AMBIVALENT SUCTION (RIGHT-LEFT)
  - MECHANICAL SEAL / OIL SEAL (FL MODEL)
  - GAROLLA Ø50 STANDARD FITTINGS
  - STAINLESS STEEL TROLLEY
- OPTIONAL: BY PASS  
OPTIONAL: REMOTE RADIO CONTROLLER: ON/OF REVERSE SUCTION RIGHT/LEFT

T 110: PORTATA MASSIMA  
MAX FLOWRATE

12000 Lt/h  
12000 Lt/h

T 110 VM



T 110 ICDR



T-110 A2V



T 110 FL



COD.	ARTICOLO – ITEM		PRICE €
5610	<b>T 110 FL</b> – Flangiata 1 velocità 900 rpm (Tenuta a paraolio)	3-phase	1.060,00
5611	<i>TIFONE T 110 FL – FLANGED 1 SPEED 900 rpm (Oil seal)</i>	1-phase	1.244,00
5612	<b>T 110 A2V</b> – Assiale 2 velocità 435/870 rpm	3-phase	1.826,00
	<i>T 110 A2V – Axial 2 speeds 435/870 rpm</i>		
5613	<b>T 110 VM155</b> – Motovariatore 155÷1000 rpm	3-phase	2.210,00
5617	<i>T 110 VM155 – Motovariator 155÷1000 rpm</i>	1-phase	2.290,00
5614	<b>T 110 VM0</b> – Motovariatore 0÷900 rpm	3-phase	2.667,00
	<i>T 110 VM0 – Motovariator 0÷900 rpm</i>		
5615	<b>T 110 ICDR</b> – Inverter con radiocomando (modello ECO)	3-phase	3.660,00
5616	<i>T 110 ICDR – Freq. drive controller with remote radio-control (eco model)</i>	1-phase	3.690,00
RAS	<b>RADIOCOMANDO MOD. ECO</b> – Per T 110 A2V-VM0-VM155		750,00
	<i>REMOTE RADIO CONTROLLER ECO MODEL – For T 110 A2V-VM0-VM155</i>		
RTL	<b>RADIOCOMANDO LUNGO RAGGIO MOD. LR</b> – Solo T 110 ICDR		690,00
	<i>LONG RANGE REMOTE RADIO CONTROLLER LR MODEL – Only T 110 ICDR</i>		
RFP	<b>RADIOCOMANDO MOD. FP</b> – Per zone con disturbi di frequenza	Solo ICDR	975,00
	<i>REMOTE RADIO CONTROLLER FP MODEL- For areas with frequency interferences</i>	Only ICDR	
SML	<b>VUOTOSTATO</b> – Sensore assenza liquido per T 110 A2V-VM0-VM155		700,00
	<i>VACUUM SWITCH – Sensor against dry running for T 110 A2V-VM0-VM155</i>		
SML-I	<b>VUOTOSTATO E RADIOCOMANDO LR</b> – per T 110 ICDR		1.375,00
	<i>VACUUM SWITCH AND LONG RANGE RADIO CONTROLLER – for T 110 ICDR</i>		
BP110	<b>BY PASS</b>		51,00

**DIFFERENZA PER RACCORDI SPECIALI A POMPA € 35,00 NETTI – DIFFERENZA MOTORE VOLTAGGIO SPEC. € 40,00 NETTI**

*FOR SPECIAL PUMP FITTINGS ADD 35,00 € NET – FOR SPECIAL VOLTAGE MOTOR ADD 40,00 € NET*

**DIFFERENZA PER MOTORI 110V 45,00 € NETTI – THE DIFFERENCE FOR 110V MOTOR ADD 45,00 € NET**



## POMPA A GIRANTE FLESSIBILE TIFONE "T 180"

### CARATTERISTICHE STANDARD

- AUTOADESCANTE
  - IN ACCIAIO INOX AISI 304
  - SENZA BY PASS
  - REVERSIBILITA' DEL FLUSSO (DX-SX)
  - TENUTA A PARAOLIO
  - FLANGIATA O TRASMISSIONE A CINGHIA
  - RACCORDO STANDARD GAROLLA Ø60
  - CARRELLO INOX
- OPTIONAL: BY PASS

### IMPELLER PUMP TIFONE "T 180" TECHNICAL FEATURES

- SELF-PRIMING
  - MADE IN STAINLESS STEEL AISI 304
  - WITHOUT BY PASS
  - AMBIVALENT SUCTION (RIGHT-LEFT)
  - OIL SEAL
  - FLANGED OR BELT TRANSMISSION
  - GAROLLA Ø60 STANDARD FITTINGS
  - STAINLESS STEEL TROLLEY
- OPTIONAL: BY PASS

**T 180: PORTATA MASSIMA**  
MAX FLOWRATE

**20000 Lt/h**  
20000 Lt/h



T 180 QR

T 180 TC



T-180 FL



T-180 FL S/CARRELLO

COD.	ARTICOLO – ITEM		PRICE €
5217	<b>T 180 QR</b> – Quadro programmabile per rimontaggi <i>T 180 QR – Programmable control panel for repassing of must over the grape dregs - without bypass</i>	3-phase	2.005,00
5218	<b>T 180 FL SENZA CARRELLO</b> – Accensione sul motore <i>T 180 FL WITHOUT TROLLEY – Switch motor on the engine without By Pass</i>	3-phase	1.126,00
5219	<b>T 180 FL SENZA CARRELLO</b> – Senza quadro <i>T 180 FL WITHOUT TROLLEY – Without panel control</i>	3-phase	1.120,00
5221	<b>T 180 FL</b> – Flangiata 1 velocita' 900 rpm <i>T 180 FL – Flanged single speed 900 rpm</i>	3-phase	1.345,00
5222	<b>T 180 TC2V</b> – Trasmissione a cinghia 2 velocità 350/550 rpm <i>T 180 TC2V – Belt transmission 2 speeds 350/550 rpm</i>	3-phase	1.533,00
5223		1-phase	1.614,00
5232	<b>T 180 TC4V</b> – Trasmissione a cinghia 4 vel. 350/550/680/1080 rpm <i>T 180 TC2V – Belt transmission 4 speeds 350/550/680/1080 rpm</i>	3-Phase	1.789,00
BP180	<b>BY PASS</b>		51,00

**DIFFERENZA PER RACCORDI SPECIALI A POMPA € 35,00 NETTI – DIFFERENZA MOTORE VOLTAGGIO SPEC. € 40,00 NETTI**  
FOR SPECIAL PUMP FITTINGS ADD 35,00 € NET – FOR SPECIAL VOLTAGE MOTOR ADD 40,00 € NET  
**DIFFERENZA PER MOTORI 110V 45,00 € NETTI – FOR 110V MOTOR ADD 45,00 € NET**

## POMPA A GIRANTE FLESSIBILE TIFONE "T 180"

### CARATTERISTICHE STANDARD

- AUTOADESCANTE
  - IN ACCIAIO INOX AISI 304
  - SENZA BY PASS
  - REVERSIBILITA' DEL FLUSSO (DX-SX)
  - TENUTA MECCANICA
  - RACCORDO STANDARD GAROLLA Ø60
  - CARRELLO INOX
- OPTIONAL: BY PASS  
OPTIONAL: RADIOCOMANDO ON/OF INVERSIONE DX/SX  
OPTIONAL: SENSORE ASSENZA LIQUIDO

### IMPELLER PUMP TIFONE "T 180"

#### TECHNICAL FEATURES

- SELF-PRIMING
  - MADE IN STAINLESS STEEL AISI 304
  - WITHOUT BY PASS
  - AMBIVALENT SUCTION (RIGHT-LEFT)
  - MECHANICAL SEAL
  - GAROLLA Ø60 STANDARD FITTINGS
  - STAINLESS STEEL TROLLEY
- OPTIONAL: BY PASS  
OPTIONAL: REMOTE RADIO CONTROLLER: ON/OF REVERSE SUCTION RIGHT/LEFT  
OPTIONAL: SENSOR AGAINST DRY RUNNING

**T 180: PORTATA MASSIMA**      **20000 Lt/h**  
**MAX FLOWRATE**                      **20000 Lt/h**



COD.	ARTICOLO – ITEM		PRICE €
5255	<b>T 180 A2V</b> – Assiale 2 velocità 435/870 rpm <i>T 180 A2V – Axial 2 speeds 435/870 rpm</i>	3-phase	2.030,00
5292	<b>T 180 VM155</b> – Motovariatore 155÷750 rpm <i>T 180 VM155 – Motovariator 155÷750 rpm</i>	3-phase	2.367,00
5282	<b>T 180 VM0</b> – Motovariatore 0÷750 rpm <i>T 180 VM0 – Motovariator 0÷750 rpm</i>	3-phase	3.203,00
5910 5909	<b>T 180 ICDR</b> – Inverter con radiocomando (modello ECO) <i>T 180 ICDR – Freq. drive controller with remote radio-control (eco model)</i>	3-phase 1-phase	3.888,00 3.930,00
RAS	<b>RADIOCOMANDO MOD. ECO</b> – Per T 180 A2V-VM0-VM155 <i>REMOTE RADIO CONTROLLER ECO MODEL – For T 180 A2V-VM0-VM155</i>		750,00
RTL	<b>RADIOCOMANDO LUNGO RAGGIO MOD. LR</b> – Solo T 180 ICDR <i>LONG RANGE REMOTE RADIO CONTROLLER LR MODEL – Only T 180 ICDR</i>		690,00
RFP	<b>RADIOCOMANDO MOD. FP</b> – Per zone con disturbi di frequenza <i>REMOTE RADIO CONTROLLER FP MODEL- For areas with frequency interferences</i>	Solo ICDR Only ICDR	975,00
SML	<b>VUOTOSTATO</b> – Sensore assenza liquido per T 180 A2V-VM0-VM155 <i>VACUUM SWITCH – Sensor against dry running for T 180 A2V-VM0-VM155</i>		700,00
SML-I	<b>VUOTOSTATO E RADIOCOMANDO LR</b> – per T 180 ICDR <i>VACUUM SWITCH AND LONG RANGE RADIO CONTROLLER – for T 180 ICDR</i>		1.375,00
BP180	<b>BY PASS</b>		51,00

**DIFFERENZA PER RACCORDI SPECIALI A POMPA € 35,00 NETTI – DIFFERENZA MOTORE VOLTAGGIO SPEC. € 40,00 NETTI**  
*FOR SPECIAL PUMP FITTINGS ADD 35,00 € NET – FOR SPECIAL VOLTAGE MOTOR ADD 40,00 € NET*  
**DIFFERENZA PER MOTORI 110V 50,00 € NETTI – FOR 110V MOTOR ADD 50,00 € NET**

## POMPA A GIRANTE FLESSIBILE TIFONE "T 250"

### CARATTERISTICHE STANDARD

- AUTOADESCANTE
  - IN ACCIAIO INOX AISI 304
  - SENZA BY PASS
  - REVERSIBILITA' DEL FLUSSO (DX-SX)
  - TENUTA MECCANICA
  - RACCORDO STANDARD GAROLLA Ø80
  - CARRELLO INOX
- OPTIONAL: RADIOCOMANDO ON/OFF INVERSIONE DX/SX  
OPTIONAL: SENSORE ASSENZA LIQUIDO

### IMPELLER PUMP TIFONE "T 250" TECHNICAL FEATURES

- SELF-PRIMING
  - MADE IN STAINLESS STEEL AISI 304
  - WITHOUT BY PASS
  - AMBIVALENT SUCTION (RIGHT-LEFT)
  - MECHANICAL SEAL
  - GAROLLA Ø80 STANDARD FITTINGS
  - STAINLESS STEEL TROLLEY
- OPTIONAL: REMOTE RADIO CONTROLLER: ON/OFF REVERSE  
SUCTION RIGHT/LEFT  
OPTIONAL: SENSOR AGAINST DRY RUNNING

**T 250: PORTATA MASSIMA**      **24000 Lt/h**  
**MAX FLOWRATE**                      **24000 Lt/h**



T 250 VM



T 250 ICDR



T-250 A2V

COD.	ARTICOLO – ITEM		PRICE €
5600	<b>T 250 A2V</b> – Assiale 2 velocità 435/870 rpm T 250 A2V – Axial 2 speeds 435/870 rpm	3-phase	2.152,00
5601	<b>T 250 VM155</b> – Motovariatore 155÷750 rpm T 250 VM155 – Motovariator 155÷750 rpm	3-phase	2.933,00
5602	<b>T 250 VM0</b> – Motovariatore 0÷750 rpm T 250 VM0 – Motovariator 0÷750 rpm	3-phase	3.459,00
5603 5604	<b>T 250 ICDR</b> – Inverter con radiocomando (modello ECO) T 250 ICDR – Freq. drive controller with remote radio-control (eco model)	3-phase 1-phase	4.529,00 4.589,00
RAS	<b>RADIOCOMANDO MOD. ECO</b> – Per T 250 A2V-VM0-VM155 REMOTE RADIO CONTROLLER ECO MODEL – For T 250 A2V-VM0-VM155		750,00
RTL	<b>RADIOCOMANDO LUNGO RAGGIO MOD. LR</b> – Solo T 250 ICDR LONG RANGE REMOTE RADIO CONTROLLER LR MODEL – Only T 250 ICDR		690,00
RFP	<b>RADIOCOMANDO MOD. FP</b> – Per zone con disturbi di frequenza REMOTE RADIO CONTROLLER FP MODEL- For areas with frequency interferences	Solo ICDR Only ICDR	975,00
SML	<b>VUOTOSTATO</b> – Sensore assenza liquido per T 250 A2V-VM0-VM155 VACUUM SWITCH – Sensor against dry running for T 250 A2V-VM0-VM155		700,00
SML-I	<b>VUOTOSTATO E RADIOCOMANDO LR</b> – per T 250 ICDR VACUUM SWITCH AND LONG RANGE RADIO CONTROLLER – for T 250 ICDR		1.375,00

**DIFFERENZA PER RACCORDI SPECIALI A POMPA € 35,00 NETTI – DIFFERENZA MOTORE VOLTAGGIO SPEC. € 46,00 NETTI**  
**FOR SPECIAL PUMP FITTINGS ADD 35,00 € NET – FOR SPECIAL VOLTAGE MOTOR ADD 46,00 € NET**  
**DIFFERENZA PER MOTORI 110V 60,00 € NETTI – FOR 110V MOTOR ADD 60,00 € NET**

## POMPA A GIRANTE FLESSIBILE TIFONE "T 500"

### CARATTERISTICHE STANDARD

- AUTOADESCANTE
  - IN ACCIAIO INOX AISI 304
  - SENZA BY PASS
  - REVERSIBILITA' DEL FLUSSO (DX-SX)
  - TENUTA MECCANICA
  - RACCORDO STANDARD GAROLLA Ø80
  - CARRELLO INOX
- OPTIONAL: RADIOCOMANDO ON/OFF INVERSIONE DX/SX  
OPTIONAL: SENSORE ASSENZA LIQUIDO

### IMPELLER PUMP TIFONE "T 500" TECHNICAL FEATURES

- SELF-PRIMING
  - MADE IN STAINLESS STEEL AISI 304
  - WITHOUT BY PASS
  - AMBIVALENT SUCTION (RIGHT-LEFT)
  - MECHANICAL SEAL
  - GAROLLA Ø80 STANDARD FITTINGS
  - STAINLESS STEEL TROLLEY
- OPTIONAL: REMOTE RADIO CONTROLLER: ON/OFF REVERSE  
SUCTION RIGHT/LEFT  
OPTIONAL: SENSOR AGAINST DRY RUNNING

**T 500: PORTATA MASSIMA** 44000 Lt/h  
**MAX FLOWRATE** 44000 Lt/h



COD.	ARTICOLO – ITEM	PRICE €
5801	<b>T 500 A2V</b> – Assiale 2 velocità 435/870 rpm T 500 A2V – Axial 2 speeds 435/870 rpm	3-phase 3.497,00
5802	<b>T 500 VM155</b> – Motovariatore 155÷750 rpm T 500 VM155 – Motovariator 155÷750 rpm	3-phase 4.389,00
5812	<b>T 500 VM0</b> – Motovariatore 0÷750 rpm T 500 VM0 – Motovariator 0÷750 rpm	3-phase 5.177,00
5920	<b>T 500 ICDR</b> – Inverter con radiocomando (modello ECO) T 500 ICDR – Freq. drive controller with remote radio-control (eco model)	3-phase 5.965,00
RAS	<b>RADIOCOMANDO MOD. ECO</b> – Per T 500 A2V-VM0-VM155 REMOTE RADIO CONTROLLER ECO MODEL – For T 500 A2V-VM0-VM155	750,00
RTL	<b>RADIOCOMANDO LUNGO RAGGIO MOD. LR</b> – Solo T 500 ICDR LONG RANGE REMOTE RADIO CONTROLLER LR MODEL – Only T 500 ICDR	690,00
RFP	<b>RADIOCOMANDO MOD. FP</b> – Per zone con disturbi di frequenza REMOTE RADIO CONTROLLER FP MODEL- For areas with frequency interferences	Solo ICDR Only ICDR 975,00
SML	<b>VUOTOSTATO</b> – Sensore assenza liquido per T 500 A2V-VM0-VM155 VACUUM SWITCH – Sensor against dry running for T 500 A2V-VM0-VM155	700,00
SML-I	<b>VUOTOSTATO E RADIOCOMANDO LR</b> – per T 500 ICDR VACUUM SWITCH AND LONG RANGE RADIO CONTROLLER – for T 500 ICDR	1.375,00

**DIFFERENZA PER RACCORDI SPECIALI A POMPA € 35,00 NETTI – DIFFERENZA MOTORE VOLTAGGIO SPEC. € 70,00 NETTI**  
FOR SPECIAL PUMP FITTINGS ADD 35,00 € NET – FOR SPECIAL VOLTAGE MOTOR ADD 70,00 € NET  
**DIFFERENZA PER MOTORI 110V 80,00 € NETTI – FOR 110V MOTOR ADD 80,00 € NET**

## POMPA A GIRANTE FLESSIBILE TIFONE "T 800"

### CARATTERISTICHE STANDARD

- AUTOADESCANTE
- IN ACCIAIO INOX AISI 304
- SENZA BY PASS
- REVERSIBILITA' DEL FLUSSO (DX-SX)
- TENUTA MECCANICA
- RACCORDO STANDARD GAROLLA Ø100
- CARRELLO INOX

OPTIONAL: RADIOCOMANDO ON/OFF INVERSIONE DX/SX

OPTIONAL: SENSORE ASSENZA LIQUIDO

### IMPELLER PUMP TIFONE "T 800"

#### TECHNICAL FEATURES

- SELF-PRIMING
  - MADE IN STAINLESS STEEL AISI 304
  - WITHOUT BY PASS
  - AMBIVALENT SUCTION (RIGHT-LEFT)
  - MECHANICAL SEAL
  - GAROLLA Ø100 STANDARD FITTINGS
  - STAINLESS STEEL TROLLEY
- OPTIONAL: REMOTE RADIO CONTROLLER: ON/OFF REVERSE SUCTION RIGHT/LEFT
- OPTIONAL: SENSOR AGAINST DRY RUNNING

**T 800: PORTATA MASSIMA**      **63000 Lt/h**  
MAX FLOWRATE                      63000 Lt/h

T 800 ICDR



T-800 A2V+SML



COD.	ARTICOLO – ITEM	PRICE €
5979	<b>T 800 A2V</b> – Assiale 2 velocità 435/870 rpm T 800 A2V – Axial 2 speeds 435/870 rpm	3-phase 4.310,00
5980	<b>T 800 ICDR</b> – Inverter con radiocomando (modello ECO) T 800 ICDR – Freq. drive controller with remote radio-control (eco model)	3-phase 6.623,00
RAS	<b>RADIOCOMANDO MOD. ECO</b> – Per T 800 A2V-VM0-VM155 REMOTE RADIO CONTROLLER ECO MODEL – For T 800 A2V-VM0-VM155	750,00
RTL	<b>RADIOCOMANDO LUNGO RAGGIO MOD. LR</b> – Per T 800 ICDR LONG RANGE REMOTE RADIO CONTROLLER LR MODEL – For T 800 ICDR	690,00
RFP	<b>RADIOCOMANDO MOD. FP</b> – Per zone con disturbi di frequenza REMOTE RADIO CONTROLLER FP MODEL- For areas with frequency interferences	Solo ICDR Only ICDR 975,00
SML	<b>VUOTOSTATO</b> – Sensore assenza liquido per T 800 A2V VACUUM SWITCH – Sensor against dry running for T 800 A2V	700,00
SML-I	<b>VUOTOSTATO E RADIOCOMANDO LR</b> – per T 800 ICDR VACUUM SWITCH AND LONG RANGE RADIO CONTROLLER – for T 800 ICDR	1.375,00

**DIFFERENZA PER RACCORDI SPECIALI A POMPA € 40,00 NETTI – DIFFERENZA MOTORE VOLTAGGIO SPEC. € 70,00 NETTI**  
FOR SPECIAL PUMP FITTINGS ADD 40,00 € NET – FOR SPECIAL VOLTAGE MOTOR ADD 70,00 € NET  
**DIFFERENZA PER MOTORI 110V 100,00 € NETTI – FOR 110V MOTOR ADD 100,00 € NET**

## CONTALITRI “CDZ”

### CARATTERISTICHE STANDARD

- FLUSSIMETRO A INDUZIONE MAGNETICA
- QUADRO CON INVERTER E PRESA PER COMANDO POMPA
- CARRELLO
- TUBAZIONE E RACCORDI STANDARD Ø60 CDZ-60
- TUBAZIONE E RACCORDI STANDARD Ø80 CDZ-80

## “CDZ” FLOWMETER

### TECHNICAL FEATURES

- MAGNETIC INDUCTION FLOWMETER
- CONTROL PANEL WITH FREQUENCY DRIVE CONTROLLER AND REMOTE CONTROL PUMP PLUG
- WITH TROLLEY
- STANDARD PIPE AND FITTINGS Ø60 FOR CDZ-60
- STANDARD PIPE AND FITTINGS Ø80 FOR CDZ-80

<b>CDZ-60: PORTATA MASSIMA</b>	<b>24000 Lt/h</b>
MAX FLOWRATE	24000 Lt/h
<b>CDZ-80: PORTATA MASSIMA</b>	<b>90000 Lt/h</b>
MAX FLOWRATE	90000 Lt/h



**CONTALITRI CDZ**  
CDZ Flowmeter

**ATTENZIONE: NON ADATTO AGLI OLII**  
**WARNING: NOT SUITABLE FOR OLIVE OIL**

COD.	ARTICOLO – ITEM	PRICE €
5989-6	<b>CONTALITRI CDZ-60</b> FLOWMETER CDZ-60	3-phase 3.598,00
5989-8	<b>CONTALITRI CDZ-80</b> FLOWMETER CDZ-80	3-phase 5.466,00

## POMPE MONOVITE TRAMOGGIATE “PM”

Ideali per uva diraspata, pigiata, fermentata e vino

### CARATTERISTICHE STANDARD

- IN ACCIAIO INOX AISI 304
- TRAMOGGIATA
- 1 VELOCITÀ 195 rpm
- PREVALENZA 30 Mt.
- SENSORE ASSENZA LIQUIDO
- OPTIONAL: INVERTER
- OPTIONAL: SONDA DI LIVELLO

### SINGLE-SCREW MONO PUMPS “PM”

Suggested for: destemmed grape, crushed grape, fermented grape and wine

### TECHNICAL FEATURES

- MADE IN STAINLESS STEEL AISI 304
- WITH LOADING HOPPER
- 1 SPEED 195 rpm
- TOTAL HEAD 30 Mt.
- SENSOR AGAINST DRY RUNNING
- OPTIONAL: FREQUENCY DRIVE CONTROLLER
- OPTIONAL: PROBE LEVEL SENSOR

<b>PM 7: PORTATA</b>	<b>7 Ton/h</b>
FLOWRATE	7 Ton/h
<b>PM 12: PORTATA</b>	<b>12 Ton/h</b>
FLOWRATE	12 Ton/h
<b>PM 22: PORTATA</b>	<b>22 Ton/h</b>
FLOWRATE	22 Ton/h
<b>PM 30: PORTATA</b>	<b>30 Ton/h</b>
FLOWRATE	30 Ton/h



PM 30



PM 7+INV



PM 12

COD.	ARTICOLO – ITEM		PRICE €
PM7	<b>POMPA MONOVITE PM 7</b> SINGLE-SCREW PUMP PM 7	3 kW 3-phase	6.085,00
PM12	<b>POMPA MONOVITE PM 12</b> SINGLE-SCREW PUMP PM 12	4 kW 3-phase	7.476,00
PM22	<b>POMPA MONOVITE PM 22</b> SINGLE-SCREW PUMP PM 22	5,5 kW 3-phase	9.069,00
PM30	<b>POMPA MONOVITE PM 30</b> SINGLE-SCREW PUMP PM 30	7 kW 3-phase	11.410,00
INV-PM	<b>INVERTER</b> – Per pompa PM FREQUENCY DRIVE CONTROLLER – For PM pump	3-phase	1.810,00
INV-AS	<b>SONDA DI LIVELLO AD ASTE</b> ELECTRIC PROBE LEVEL SENSOR		680,00

**PER MOTORI A VOLTAGGIO SPECIALE SARA' AGGIUNTA UNA DIFFERENZA DA 50,00 A 100,00 €**  
FOR SPECIAL VOLTAGE MOTORS WILL BE ADDED AN EXTRA OF 50,00 € ÷100,00

## POMPE A STATORE FLOTTANTE “SF”

Adatte a: vino, birra, olio e liquidi alimentari; ideali per linee di imbottigliamento e filtrazione.

### CARATTERISTICHE STANDARD

- IN ACCIAIO INOX AISI 304
  - STATORE NBR
  - TENUTA IN GRAFITE
  - SENZA BY PASS
  - INVERTER
  - PREDISPOSTE CON COMANDO REMOTO
- OPTIONAL: BY PASS  
OPTIONAL: SENSORE ASSENZA LIQUIDO  
OPTIONAL: RADIOCOMANDO

## WOBBLE COMPACT MONO PUMPS “SF”

For wine, beer, olive oil and foodgrade liquids. Perfectly suitable with bottling and filtering lines.

### TECHNICAL FEATURES

- MADE IN STAINLESS STEEL AISI 304
  - NBR STATOR
  - GRAPHITE MECHANICAL SEAL
  - WITHOUT BY PASS
  - WITH FREQUENCY DRIVE CONTROLLER
  - WITH REMOTE CONTROL (FOR AUTOMATIC BOTTLING LINE)
- OPTIONAL: BY PASS  
OPTIONAL: SENSOR AGAINST DRY RUNNING  
OPTIONAL: REMOTE RADIO CONTROLLER

<b>SF 25: PORTATA</b>	<b>2500 Lt/h</b>
FLOWRATE	2500 Lt/h
<b>SF 40: PORTATA</b>	<b>5000 Lt/h</b>
FLOWRATE	5000 Lt/h
<b>SF 80: PORTATA</b>	<b>8000 Lt/h</b>
FLOWRATE	8000 Lt/h



COD.	ARTICOLO – ITEM	PRICE €
SF-25B	<b>SF25 BREW</b> – Versione per birra e aceto in acciaio inox aisi 316, statore EPDM, tenuta in tungsteno <i>SF25 BREW – Beer and vinegrad version in stainless steel Aisi 316, EPDM stator, tungsten mechanical seal</i>	1-phase 2.550,00
SF-25M SF-25T	<b>SF 25</b> – 0,55 kW	1-phase 2.502,00 3-phase 2.642,00
BP-SF25	<b>BY PASS</b> – Per SF 25 <i>BY PASS – For SF 25</i>	206,00
SF-40MS SF-40TS	<b>SF 40</b> – 1,5 kW	1-phase 3.122,00 3-phase 3.231,00
BP-SF40	<b>BY PASS</b> – Per SF 40 <i>BY PASS – For SF 40</i>	550,00
SF-80T	<b>SF 80</b> – Completa di By Pass <i>SF 80 – With By Pass</i>	2,2 kW 3-phase 4.764,00
SVT	<b>VUOTOSTATO</b> – Sensore assenza liquido <i>VACUUM SWITCH – Liquid absence sensor</i>	340,00
RTE	<b>RADIOCOMANDO MOD. ECO</b> – Per pompe SF <i>REMOTE RADIO CONTROLLER ECO MODEL – For SF pump</i>	316,00
RTL	<b>RADIOCOMANDO LUNGO RAGGIO MOD. LR</b> – Per SF <i>LONG RANGE REMOTE RADIO CONTROLLER LR MODEL – For SF pump</i>	690,00
RFP	<b>RADIOCOMANDO MOD. FP</b> – Per zone con disturbi di frequenza <i>REMOTE RADIO CONTROLLER FP MODEL- For areas with frequency interferences</i>	975,00

PER MOTORI A VOLTAGGIO SPECIALE SARA' AGGIUNTA UNA DIFFERENZA TRA I 50,00 E I 70,00 €  
FOR SPECIAL VOLTAGE MOTORS WILL BE ADDED AN EXTRA OF 50,00 ÷ 70,00 €



## POMPE MONOVITE DIRETTE “PMTI”

### CARATTERISTICHE STANDARD

- ROTORE IN ACCIAIO INOX AISI 304
  - CORPO IN ACCIAIO INOX AISI 304
  - STATORE IN NBR
  - GIUNTO APERTO AUTOLUBRIFICANTE
  - INVERTER
  - SENSORE ASSENZA LIQUIDO
- OPTIONAL: BY PASS  
OPTIONAL: RADIOCOMANDO A LUNGO RAGGIO

## SINGLE-SCREW MONO PUMPS “PMTI”

### TECHNICAL FEATURES

- STAINLESS STEEL ROTOR
  - STAINLESS STEEL BODY
  - NBR STATOR
  - SELF-LUBRICATING OPEN JOINT
  - FREQUENCY DRIVE CONTROLLER
  - SENSOR AGAINST DRY RUNNING
- OPTIONAL: BY PASS  
OPTIONAL: LONG RANGE REMOTE RADIO CONTROL

<b>PMTI 70: PORTATA</b>	<b>7000 Lt/h</b>
FLOWRATE	7000 Lt/H
<b>PMTI 120: PORTATA</b>	<b>12000 Lt/h</b>
FLOWRATE	12000 Lt/h
<b>PMTI 200: PORTATA</b>	<b>20000 Lt/h</b>
FLOWRATE	20000 Lt/h
<b>PMTI 300: PORTATA</b>	<b>30000 Lt/h</b>
FLOWRATE	30000 Lt/h
<b>PMTI 600: PORTATA</b>	<b>45000 Lt/h</b>
FLOWRATE	45000 Lt/h
<b>PMTI 800: PORTATA</b>	<b>60000 Lt/h</b>
FLOWRATE	60000 Lt/h

PMTI 120+BY PASS



COD.	ARTICOLO – ITEM		PRICE €
PMTI-70	<b>POMPA MONOVITE PMTI 70</b> SINGLE-SCREW PUMP PMTI 70	3-Phase 2,2 kW	4.938,00
BP-70	<b>BY PASS – PMTI 70</b> BY PASS – PMTI 70		941,00
PMTI-120	<b>POMPA MONOVITE PMTI 120</b> SINGLE-SCREW PUMP PMTI 120	3-Phase 3 kW	5.569,00
BP-120	<b>BY PASS – PMTI 120</b> BY PASS – PMTI 120		1.023,00
PMTI-200	<b>POMPA MONOVITE PMTI 200</b> SINGLE-SCREW PUMP PMTI 200	3-Phase 4 kW	6.760,00
BP-200	<b>BY PASS – PMTI 200</b> BY PASS – PMTI 200		1.117,00
PMTI-300	<b>POMPA MONOVITE PMTI 300</b> SINGLE-SCREW PUMP PMTI 300	3-Phase 7,5 kW	9.584,00
BP-300	<b>BY PASS – PMTI 300</b> BY PASS – PMTI 300		1.239,00
PMTI-600	<b>POMPA MONOVITE PMTI 600</b> SINGLE-SCREW PUMP PMTI 600	3-Phase 11 kW	12.790,00
BP-600	<b>BY PASS – PMTI 600</b> BY PASS – PMTI 600		1.275,00
PMTI-800	<b>POMPA MONOVITE PMTI 800</b> SINGLE-SCREW PUMP PMTI 800	3-Phase 15 kW	15.110,00
BP-800	<b>BY PASS – PMTI 800</b> BY PASS – PMTI 800		1.640,00
RTL	<b>RADIOCOMANDO LUNGO RAGGIO MOD. LR</b> – Per PMTI LONG RANGE REMOTE RADIO CONTROLLER LR MODEL – For PMTI pump		690,00
RFP	<b>RADIOCOMANDO MOD. FP</b> – Per zone con disturbi di frequenza REMOTE RADIO CONTROLLER FP MODEL- For areas with frequency interferences		975,00

PER MOTORI A VOLTAGGIO SPECIALE SARA' AGGIUNTA UNA DIFFERENZA DI 45,00 €  
FOR SPECIAL VOLTAGE MOTORS WILL BE ADDED AN EXTRA OF 45,00 €

## POMPA PERISTALTICA "ZETA-PE "

### CARATTERISTICHE STANDARD

- IN ACCIAIO INOX AISI 304
- REVERSIBILITA' DEL FLUSSO (DX-SX)
- FUNZIONAMENTO A SECCO
- AUTOADESCAMENTO IN PROFONDITA'
- A 1 VELOCITÀ MOD. Z-PE 16
- INVERTER PER Z-PE 30/45/50/65

### PERISTALTIC PUMP "ZETA-PE"

#### TECHNICAL FEATURES

- MADE IN STAINLESS STEEL AISI 304
- AMBIVALENT SUCTION (R-L)
- DRY RUNNING
- IN-DEPTH AUTO-PRIMING
- 1 SPEED FOR Z-PE 16
- FREQUENCY DRIVE CONTROLLER FOR Z-PE 30/45/50/65

## PORTATA POMPE A VELOCITÀ FISSA

### FLOW RATE 1 SPEED PUMP

Z-PE 16: 910 Lt/h

## PORTATA POMPE CON INVERTER

### FLOW RATE FREQUENCY CONTROLLER PUMP

Z-PE 30: 200÷3000 Lt/h

Z-PE 45: 500÷8000 Lt/h

Z-PE 50: 1700÷13000 Lt/h

Z-PE 65: 4800÷23000 Lt/h

Portata indicativa con vino/liquido – Indicative flowrate with wine/liquid

Z-PE 50 TRAMOGGIATA  
Z-PE 50 WITH HOPPER



Z-PE 16



Z-PE 50



COD.	ARTICOLO – ITEM		PRICE €
6016	<b>ZETA-PE 16</b> – Uscita Ø22 mm, pressione 4 Bar ZETA-PE 16 – Outlet Ø22 mm, pression 4 Bar	0,37 kW 1-phase	3.075,00
6031	<b>ZETA-PE 30</b> – Inverter, uscita Ø35 mm, pressione 2,5 Bar ZETA-PE 30 – With freq. drive controller, outlet Ø35 mm, pression 2,5 Bar	1,5 kW 3-phase	5.055,00
6041	<b>ZETA-PE 45</b> – Inverter, uscita Ø35 mm, pressione 2,5 Bar ZETA-PE 45 – With freq. drive controller, outlet Ø35 mm, pression 2,5 Bar	2,2 kW 3-phase	6.335,00
6051	<b>ZETA-PE 50</b> – Inverter, uscita Ø55 mm, pressione 2,5 Bar ZETA-PE 50 – With freq. drive controller, outlet Ø55 mm, pression 2,5 Bar	4 kW 3-phase	7.555,00
6052	<b>ZETA-PE 50 TRAMOGGIATA</b> – Inverter, uscita Ø55 mm ZETA-PE 50 WITH HOPPER – With freq. drive controller, outlet Ø55 mm	4+0,75 kW 3-phase	9.960,00
6061	<b>ZETA-PE 65</b> – Inverter, uscita Ø65 mm, pressione 2,5 Bar ZETA-PE 65 – With freq. drive controller, outlet Ø65 mm, pression 2,5 Bar	4 kW 3-phase	10.020,00
6062	<b>ZETA-PE 65 TRAMOGGIATA</b> – Inverter, uscita Ø65 mm ZETA-PE 65 WITH HOPPER – With freq. drive controller, outlet Ø65 mm	4+0,75 kW 3-phase	13.070,00
0800	<b>PRESSOSTATO</b> – Per Z-PE 30/50/65 MANOSTAT – For pumps Z-PE 30/50/65		267,00
0801	<b>SONDA DI LIVELLO AD ASTE</b> ELECTRIC PROBE LEVEL SENSOR		364,00
0803	<b>SISTEMA VUOTO CONTINUO</b> – Z-PE 50/65 tramoggiate VACUUM SYSTEM – For Z-PE 50/65 with hopper		1.395,00
0804	<b>RADIOCOMANDO LUNGO RAGGIO MOD. LR</b> – Per Z-PE LONG RANGE REMOTE RADIO CONTROLLER LR MODEL – For Z-PE pump		690,00
RFP	<b>RADIOCOMANDO MOD. FP</b> – Per zone con disturbi di frequenza REMOTE RADIO CONTROLLER FP MODEL- For areas with frequency interferences	Solo ICDR Only ICDR	975,00

PER MOTORI A VOLTAGGIO SPECIALE SARA' AGGIUNTA UNA DIFFERENZA  
FOR SPECIAL VOLTAGE MOTORS WILL BE ADDED AN EXTRA

## FLOTTATORE "CRYSTAL ECO"

PER LA CHIARIFICA DEI MOSTI BIANCHI E ROSE'  
 La flottazione del mosto aiuta a risparmiare tempo e a ridurre il consumo energetico limitando l'uso del refrigeratore durante la chiarifica del vino

### CARATTERISTICHE STANDARD

- IN INOX AISI 304
- POMPA CENTRIFUGA BI-GIRANTE (INOX)
- PRE-FILTRO
- CARRELLATO
- OPTIONAL: VALVOLA A REGOLAZIONE MICROMETRICA

## FLOATING UNIT "CRYSTAL DELUXE"

TO CLARIFY WHITE AND ROSE' WINE MUSTS  
 Must flotation helps to save time and reduce energy expenditure by limiting cooling requirements during wine clarification.

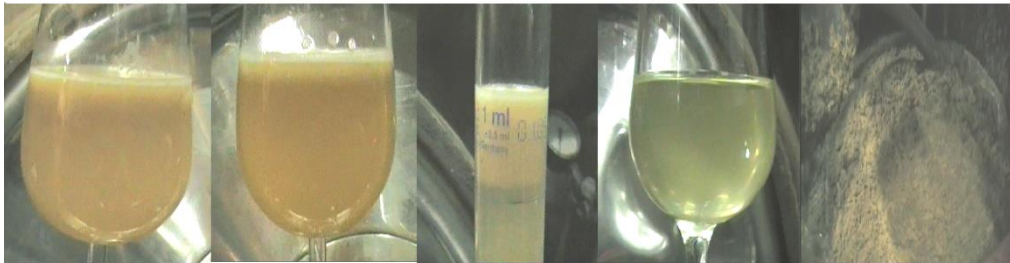
### TECHNICAL FEATURES

- MADE IN STAINLESS STEEL AISI 304
- DOUBLE (S.STEEL) IMPELLER CENTRIFUGAL PUMP
- PREFILTER
- WITH TROLLEY
- OPTIONAL: MICRO-METRIC BUTTERFLY VALVE

<b>ECO:</b>	<b>PRODUZIONE ORARIA</b>	<b>12000 Lt/h</b>
	HOURLY OUTPUT	12000 Lt/h
<b>DELUXE:</b>	<b>PRODUZIONE ORARI</b>	<b>22000 Lt/h</b>
	HOURLY OUTPUT	22000 Lt/h



CRYSTAL "ECO"+MCR



Before clarification      After 10 minutes      After 25 minutes      Final result      Yeast left after work



CRYSTAL "DELUXE"

COD.	ARTICOLO – ITEM	PRICE €
2010	<b>FLOTTATORE CRYSTAL ECO</b> FLOTATION UNIT CRYSTAL ECO	4 kW 3-phase 4.347,00
2011	<b>FLOTTATORE CRYSTAL DELUXE</b> FLOTATION UNIT CRYSTAL DELUXE	7,5 kW 3-phase 5.017,00
MCR	<b>VALVOLA MICROMETRICA</b> MICRO-METRIC BUTTERFLY VALVE	322,00

**PER MOTORI A VOLTAGGIO SPECIALE SARA' AGGIUNTA UNA DIFFERENZA DI € 250,00 NETTI**  
 FOR SPECIAL VOLTAGE MOTORS WILL BE ADDED AN EXTRA € 250,00 NET

**ZAMBELLI** *Enotech*

**since 1888**

*wine, fruit and olive oil equipment*