

Eurasian Watermilfoil in the Briggs Lake Chain: 2019

Rush Lake (#71-0147)

Briggs Lake (#71-0146)

Julia Lake (#71-0145)

Big Elk Lake (#71-0141)

Surveyed June 26, August 2, & August 19, 2019



Survey, Analysis, and Reporting by:

James A. Johnson – *Aquatic Ecologist, Freshwater Scientific Services, LLC*



Certified Lake Manager
www.NALMS.org

Purpose of Survey

These surveys were designed to locate and delineate areas of Eurasian watermilfoil (*Myriophyllum spicatum*, henceforth referred to as EWM) in Briggs Lake, Julia Lake, Rush Lake, and Big Elk Lake in the summer of 2019. At the request of the Three Lake Improvement District, Rush Lake was surveyed in late June to help guide any summer herbicide treatments, while the remaining lakes were surveyed in August. These later surveys maximized the likelihood of finding any small areas of EWM by allowing any EWM time to grow to the water surface where it would be more easily found.

Survey Method

EWM Delineation Surveys

Freshwater Scientific Services surveyed Rush Lake on June 26 and Briggs, Julia, and Big Elk Lake on Aug 19, 2019, with an additional EWM search of Julia during the point-intercept plant survey conducted on Aug 2. During each of these surveys, we navigated a meandering transect over the portion of each lake that supported plants (generally <10 ft). In addition, we conducted a more intensive search (additional rake tosses) in the area surrounding the channel between Rush and Briggs. In all, we surveyed a total path length of 26 miles across all 4 lakes. While navigating these search paths, we used a combination of surface observations, sonar readings, and rake tosses to locate and delineate areas of EWM growth. Sonar and visual assessments were conducted continuously, with subsequent rake tosses to assess EWM abundance at locations where plants were not identifiable from the surface.

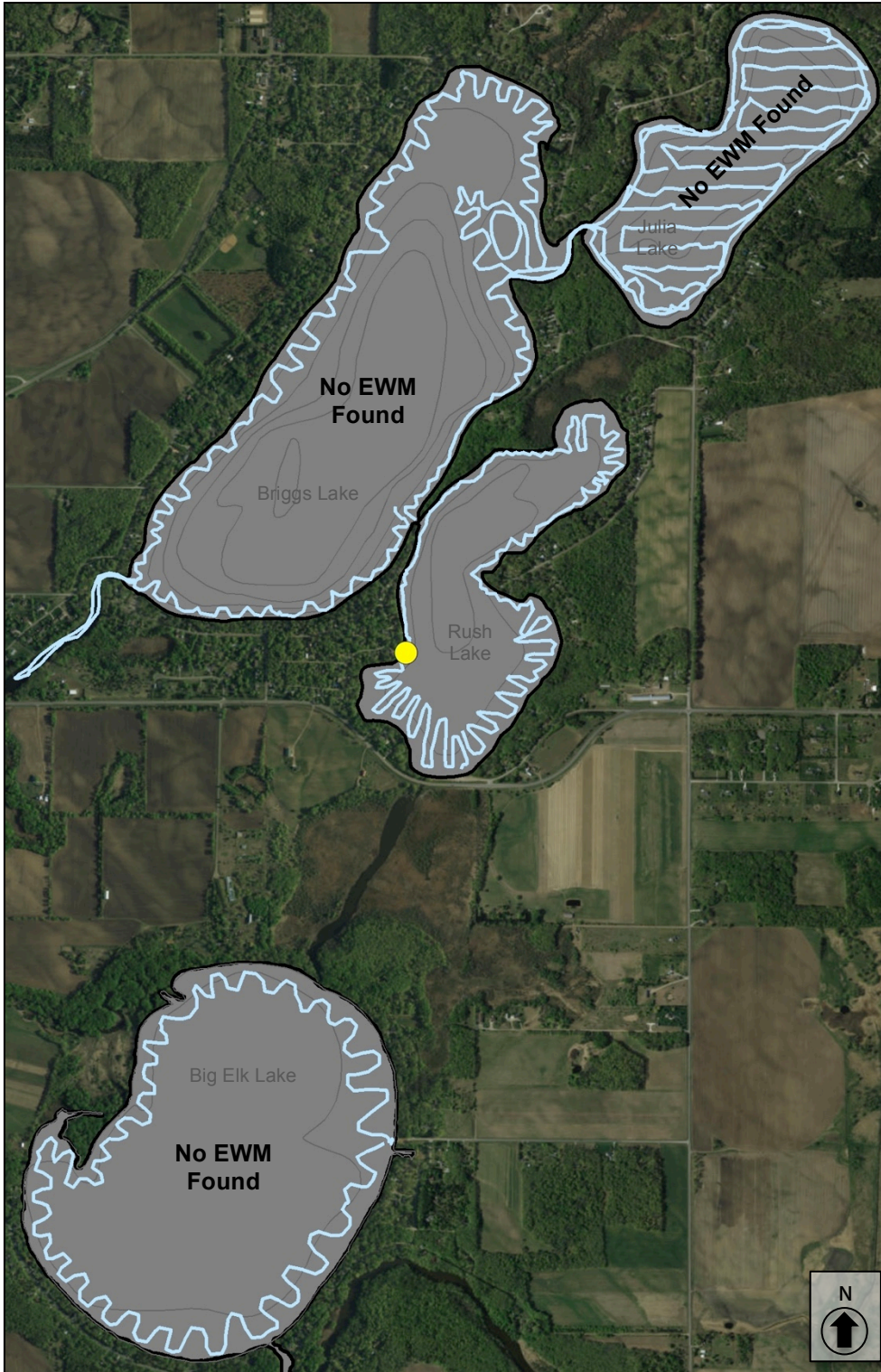
Results & Management Context

EWM in the Briggs Chain

During the 2019 surveys, we found only one location with EWM (single EWM plant in Rush Lake). This suggests that the management of EWM in Rush Lake over the past few years has been very effective. Furthermore, it suggests that EWM has not spread to the other lakes in the chain and that the threat of such spread is currently low. Based upon experience with similar EWM control projects in other lakes, it is likely that some EWM remains in the lake and we may see some patches of EWM reestablish from remaining roots in the coming years. However, TLID should be commended on a very successful EWM management program in 2018 and 2019.

Briggs Lake Chain

2019 Eurasian Watermilfoil Search & Delineation Survey



— Surveyed Path
(26 miles)

EWM Location

● 1 (single EWM plant)

Surveyed: Jun & Aug 2019
Methods: Visual, Sonar, Rake
Surveyor: JA Johnson

 **Certified Lake Manager**
www.NALMS.org

Map produced for the
Three Lake Improvement District by:


15771 Creekside Lane
Osseo, MN 55369
fixmylake.com
(651) 336-8696

Online Resources & Contacts

Minnesota Administrative Rules for Aquatic Plant Management
<https://www.revisor.mn.gov/rules/?id=6280>

Minnesota DNR – Aquatic Plant Management Regulations & Permit Application Forms
<http://www.dnr.state.mn.us/apm/index.html>

Christine Jurek

Invasive Species Specialist
Minnesota DNR
christine.jurek@state.mn.us
(320) 223-7847

Wendy Crowell

ALS Management Coordinator
Minnesota DNR
wendy.crowell@state.mn.us
(651) 259-5085