

Hurricane Proof Window System



SOFLO TRADE

QUALITY PRODUCTS WHOLESALE PRICES



Product ranges

WINDOWS

- Shopfront
- Fixed Window
- Awning Window
- Casement Window
- Sliding Window
- Single Hung Window (Coming Soon)

DOORS

- Sliding Door
- Hinged Door
- Pivot Door
- Bi-fold Door



SHOPFRONT

FPA NO.: [FL29474-R2](#)

SPA150 HURRICANE PROOF SYSTEM

○ Frame Data:

- Aluminum Grade: 6063-T6
- Extrusion wall thickness: 0.1"
- Frame size: 6" * 2"
- Frame finish: Powder coated/Anodized

○ Window Specification:

- Maximum Window Width: varied by height
- Maximum Window Height: 13'
- Maximum Wind Load Capacity: 70-105 PSF
- U-Value: 0.4-0.6 Btu/(ft².h.°F)



PICTURE WINDOW

FPA NO.: [FL30922-R1](#)

SPA100 HURRICANE PROOF SYSTEM

○ Frame Data:

- Aluminum Grade: 6063-T6
- Extrusion wall thickness: 0.08"
- Frame size: 4" * 2"
- Frame finish: Powder coated/Anodized

○ Window Specification:

- Maximum Window Width: varied by height
- Maximum Window Height: 10'
- Maximum Wind Load Capacity: 60-90 PSF
- U-Value: 0.4-0.6 Btu/(ft².h.°F)



AWNING WINDOW

FPA NO.: [FL30922-R1](#)

SPA100 HURRICANE PROOF SYSTEM

○ Frame Data:

- Aluminum Grade: 6063-T6
- Extrusion wall thickness: 0.08"
- Frame size: 4" * 2"
- Frame finish: Powder coated/Anodized

○ Window Specification:

- Maximum Window Width: 7'
- Maximum Window Height: 7'
- Maximum Wind Load Capacity: 50-75 PSF
- U-Value: 0.4-0.6



CASEMENT WINDOW

FPA NO.: [FL30922-R1](#)

SP60 HURRICANE PROOF SYSTEM

○ Frame Data:

- Aluminum Grade: 6063-T6
- Extrusion wall thickness: 0.08"
- Frame size: 2.36" * 2"
- Frame finish: Powder coated/Anodized

○ Window Specification:

- Maximum Window Width(single leaf): 3'
- Maximum Window Height: 6'
- Maximum Wind Load Capacity: 50-65 PSF
- U-Value: 0.4-0.6



SLIDING WINDOW

FPA NO.: [FL30923-R1](#)

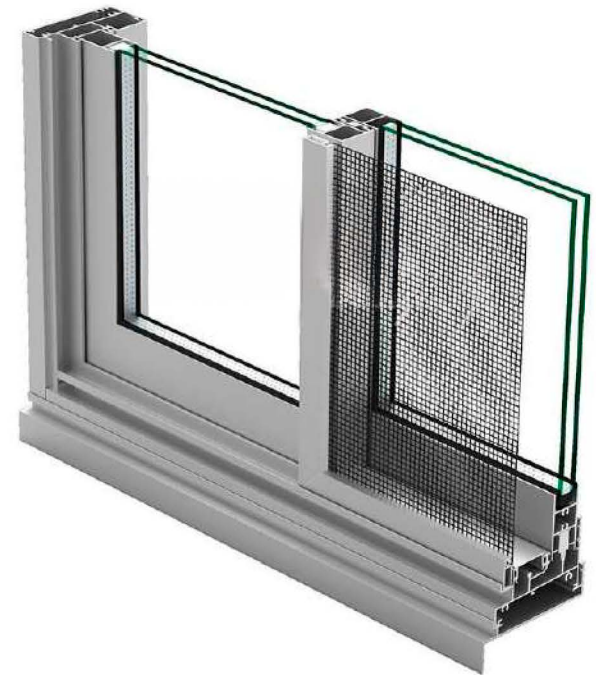
SPA100 HURRICANE PROOF SYSTEM

○ Frame Data:

- Aluminum Grade: 6063-T6
- Extrusion wall thickness: 0.08"
- Frame size: 4" * 2"
- Frame finish: Powder coated/Anodized

○ Window Specification:

- Maximum Window Width(single pane): 5'
- Maximum Window Height: 6'
- Maximum Wind Load Capacity: 50-65 PSF
- U-Value: 0.4-0.6



SLIDING/STACKER DOOR

FPA NO.: [FL30906-R1](#)

SPA100/150 HURRICANE PROOF SYSTEM

○ Frame Data:

- Aluminum Grade: 6063-T6
- Extrusion wall thickness: 0.08"
- Frame size: 4" * 2" (Slider)
6" * 2" (Stacker)
- Frame finish: Powder coated/Anodized

○ Window Specification:

- Maximum Door Width(single pane): 5'
- Maximum Door Height: 10'
- Maximum Wind Load Capacity: 50-75 PSF
- U-Value: 0.4-0.6



HINGED DOOR

FPA NO.: [FL29092-R2](#)

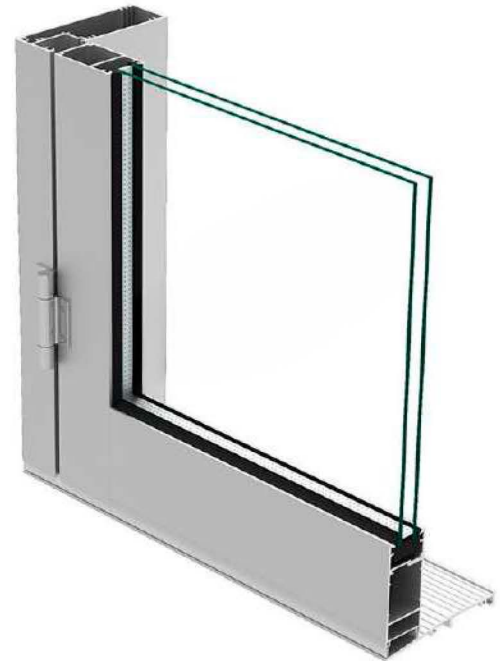
SPA100 HURRICANE PROOF SYSTEM

○ Frame Data:

- Aluminum Grade: 6063-T6
- Extrusion wall thickness: 0.08"
- Frame size: 4" * 2"
- Frame finish: Powder coated/Anodized

○ Window Specification:

- Maximum Door Width(single leaf): 3.25'
- Maximum Door Height: 10'
- Maximum Wind Load Capacity: 50-75 PSF
- U-Value: 0.4-0.6



PIVOT DOOR

FPA NO.: [FL29092-R2](#)

SPA100 HURRICANE PROOF SYSTEM

○ Frame Data:

- Aluminum Grade: 6063-T6
- Extrusion wall thickness: 0.08"
- Frame size: 4" * 2"
- Frame finish: Powder coated/Anodized

○ Window Specification:

- Maximum Door Width: 5'
- Maximum Door Height: 10'
- Maximum Wind Load Capacity: 50-60 PSF
- U-Value: 0.4-0.6



Bi-fold door

FPA NO.: [FL32506-R1](#)

SPA115 HURRICANE PROOF SYSTEM

○ Frame Data:

- Aluminum Grade: 6063-T6
- Extrusion wall thickness: 0.12"
- Frame size: 4.5" * 2"
- Frame finish: Powder coated/Anodized

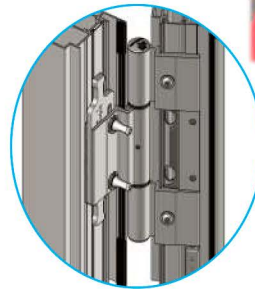
○ Window Specification:

- Maximum Door Width(single leaf): 3.25'
- Maximum Door Height: 10'
- Maximum Wind Load Capacity: 60-90 PSF
- U-Value: 0.4-0.6



WINDOW & DOOR HARDWARES

- Use original European hardware to improve the quality and perfect our window performance.
- Trustful hardware greatly longer the lifespan of a window.
- Provide smooth operating feeling, warrant carefree user experience.
- Free replacement while hardware be broken in guarantee period.



ALUMINUM PROFILE

- Profiles from Top 3 aluminum extrusion profile supplier.
- Use high purity aluminum ingot to extrude the 6063-T5/T6 aluminum profile, with great duration of fire resistance, deflection resistance and destruction resistance.
- Profile wall thickness from 2.0mm-2.5mm, both for windows and doors, stronger in commercial grade than regular profiles.



WINDOW GLASS

- Only select the glass supplier who have got authentic IGCC certified glass. ASTM 2190 tested and ANSI Z97.1 standard.
- Use grade A glass raw material to fit with our fine quality windows, choose USA Solutia hurricane rated PVB layer and Dupont SGP layer for hurricane rated windows.
- Glass proceeded in world advanced machinery and which glass with high rupture tenacity, resistant to thermal stress and 100% no impurity inside.
- Pilkington Energy Advantage Low-E tech for glass, high transparency and energy saving performance

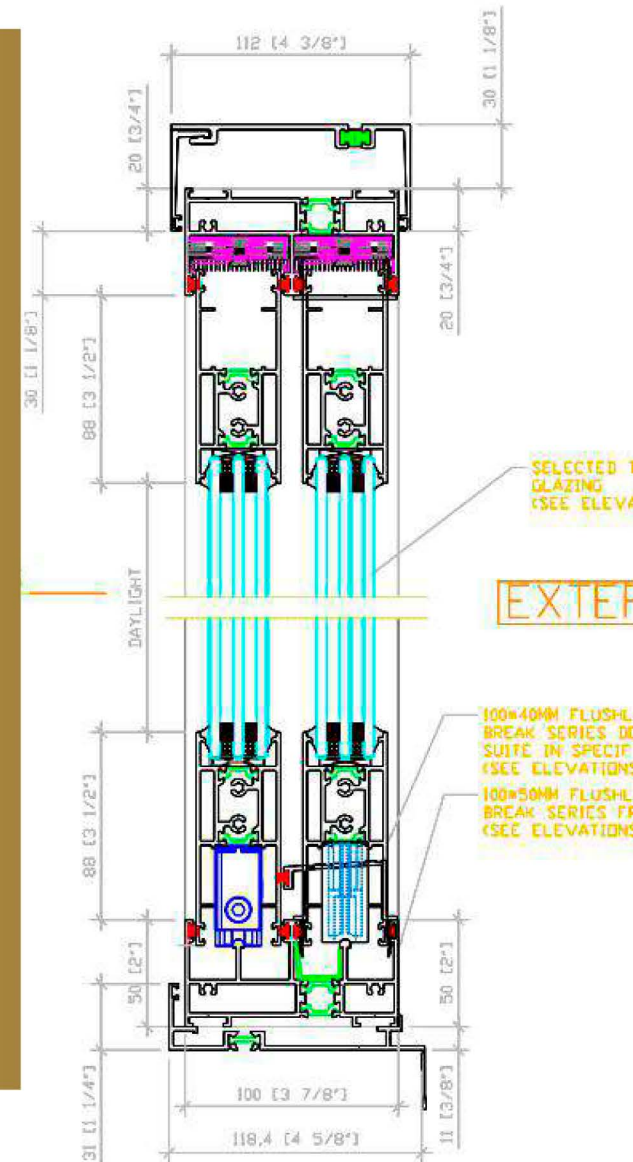


WINDOW ACCESSORY

Our windows are in one system, including the accessories that makes our windows outstanding.

1. Sub-frame

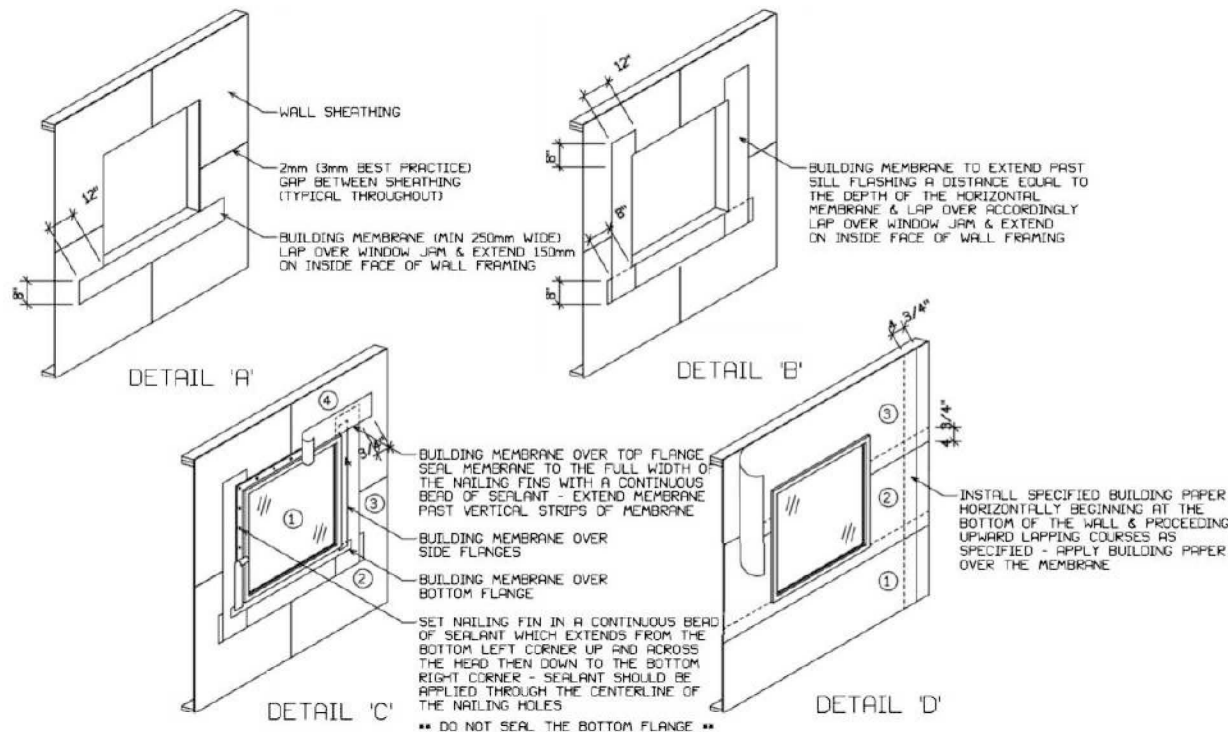
Including sub-head & sub-sill to provide convenient installation, meanwhile improving the water tightness, shock resistance and drainage performance.



WINDOW ACCESSORY

2. Nailing fin

This accessory is typical for timber stud frame houses wall structure in North American, provide a very easy installation.

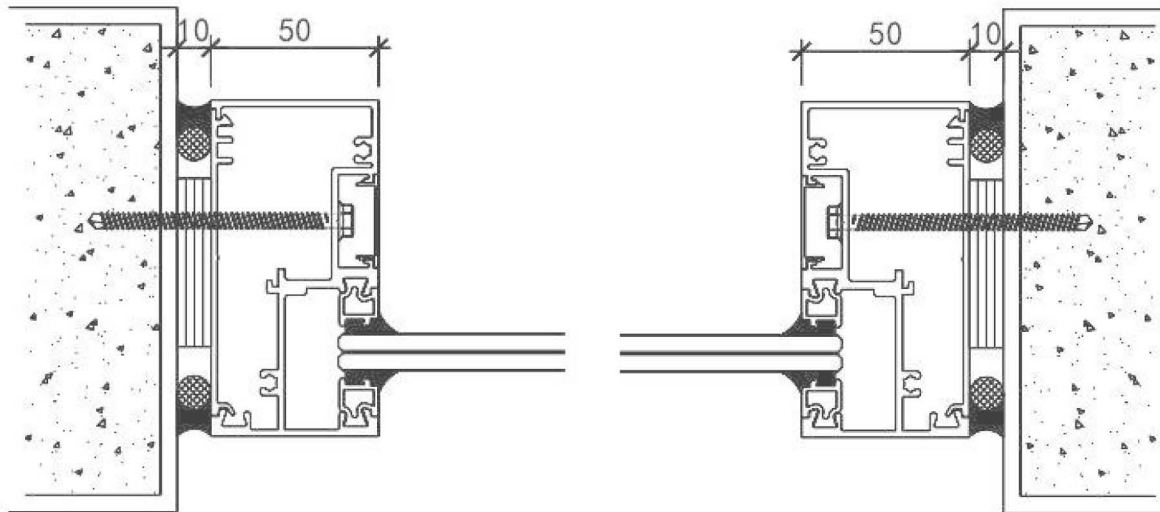


WINDOW ACCESSORY

3. Screw Face Installation

This way is well work on concrete or steel frame house, really easy installation process by typical SOCKET FRAME design on our hurricane window systems.

Strongly recommended!

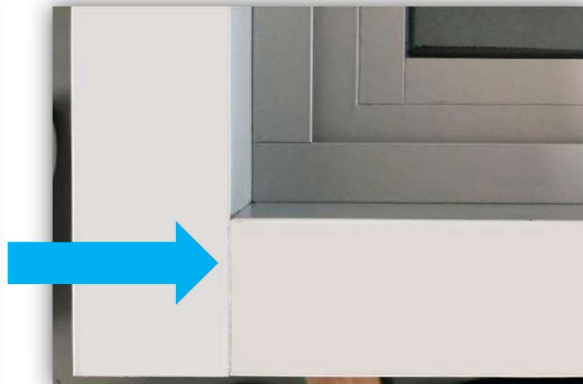


Window Sealant

The tightness of a window is mainly determined by the connection between sections.

Whether for profiles connecting or glass sealing, we use world class sealant and adhesive to insure a 100% compact window.

Such sealant can endure sun exposure, temperature sudden changing, and strong impact.



PROFILE POWDER COATING

- Interpon® Powder from AkzoNobel, the leader in powder coatings. Provide 10-30 years warranty on different powder series.
- 100% pollution-free powder, promise you a green living environment.
- Super thick coating (100+μm) have better scratch resistance.

Interpon.
powder coatings
EVERY COLOR IS GREEN



PRODUCT PACKING

Packing is the last but most important step to insure the customer will receive their windows in complete good condition.

We never think there is too many protections for our windows, because we know the quality products will be presented in our customer' hands with their fully trust.



❶ Window corner protection



❷ Window information & QC sticker



❸ Air bags protection



❹ Overall film protection



❺ Skillful container loading



❻ Checking & container sealing

PREJECTS REFERRAL

Our hurricane rated windows are widely used in Florida and Caribbean regions, We supplied qiality windows for several large commercial/residential buildings and more than 200+ charming houses, following are flagship projects you can see and feel our window quality in Florida.

Project: LA QUINTA INN

Address: Highway 98, Mirimar Beach, Walton Country, Florida ▼



PREJECTS REFERRAL

Project: CONDO HOTEL

Address: 7491W Irlo Bronson Hwy Kissimmee, FL 34747 ▼



PREJECTS REFERRAL

Project: AIRPORT HOTEL

Address: 965 University Parkway Sarasota, FL 34234 ▼



PREJECTS REFERRAL

Project: VIB BEST WESTERN HOTEL

Address: 6805 Visitors Circle, Orlando, FL 32819 ▼



PREJECTS REFERRAL

Project: HOLIDAY INN EXPRESS & SUITES

Address: 2025 Wade Hampton Boulevard , Greenville, South Carolina 29615 ▼



PROJECTS REFERRAL

Project: GALAXY HOTEL

Address: 102 Fareham Pl N, St. Petersburg, FL 33701 ▼



**We do our best to
provide you and your
family a safer and more
comfortable home with
our doors and windows**

THANKS!

WILLIAM BARRERA

Wholesaler

305-771-4820

williambarrera.info

wbfgservices@gmail.com

