



ARTIST IMPRESSION ONLY

ARTIST IMPRESSION ONLY

ARTIST IMPRESSION ONLY

ARTIST IMPRESSION ONLY

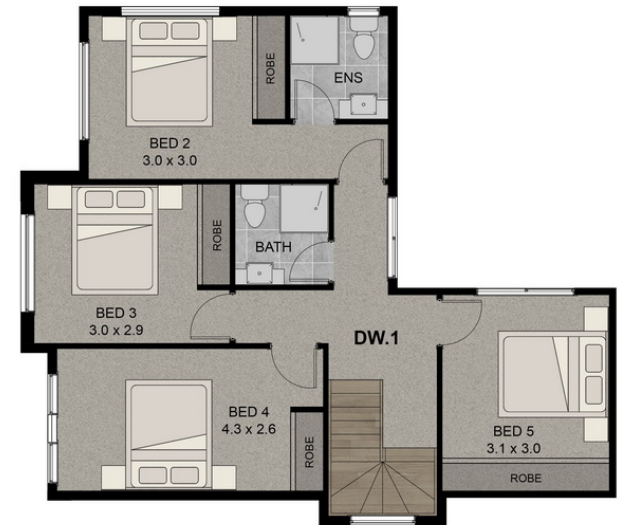
64 Panorama Street, Clayton

- Clayton 黄金三角中心位置！秒到莫纳什医疗中心、火车站，购物街的 3-5 房大室内空间别墅，本地知名建商承建！
- **校区房**
- 4 分钟开车至 Clayton North 小学
- 6 分钟开车至 Westall 中学
- 5 分钟开车至 Monash 大学
- **交通杠杆**
- 维州迄今最大规模铁路建设：Suburban Rail Loop 一期项目：贯通 Cheltenham、Clayton、Monash、Glen Waverley、Burwood 到 Box Hill 各大火车站
- 4 分钟开车至 Clayton 火车站，火车直达 Caulfield 及墨尔本市中心
- **购物中心**
- 5 分钟开车至 Clayton 商业中心、Coles 超市、M-City 购物中心
- 7 分钟开车至 IKEA 和 Bunnings
- 10 分钟开车至 Chadstone 购物中心
- **公园**
- 步行 400 米至 Evelyn St 绿色保护区
- 8 分钟开车至 Huntingdale 高尔夫场
- **医疗设施**
- 步行 350 米至 Monash 医疗中心
- Located at the heart of Clayton! Next to Monash Medical Centre, Clayton Station, Commercial Street, 3-5 bedroom townhouses with large interior, built by leading builders!
- **School Zone**
- 4 mins drive to Clayton North Primary School
- 6 mins drive to Westall Secondary College
- 5 mins drive to Monash University
- **Connectivity**
- The biggest infrastructure investment is ever undertaken in Victoria – Suburban Rail Loop
- Stage 1: Connect Cheltenham, Clayton, Monash, Glen Waverley, Burwood to Box Hill
- 5 mins drive to Clayton Station, with direct access to Caulfield, Melbourne CBD
- **Shopping**
- 5 mins to Clayton Shopping Centre, Coles, M-City Shopping Centre
- 7 mins drive to IKEA & Bunnings
- 10 mins drive to Chadstone - The Shopping Centre
- Surrounding Parks
- 400m walk to Evelyn St Reserve
- 8 mins drive to Huntingdale Golf Club
- **Medical Centre**
- 350m walk to Monash Medical Centre

GROUND FLOOR



FIRST FLOOR

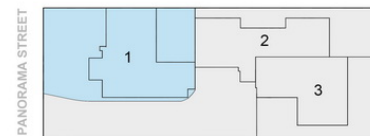


UNIT 1

5 **3** **2**

**64 PANORAMA STREET,
CLAYTON**

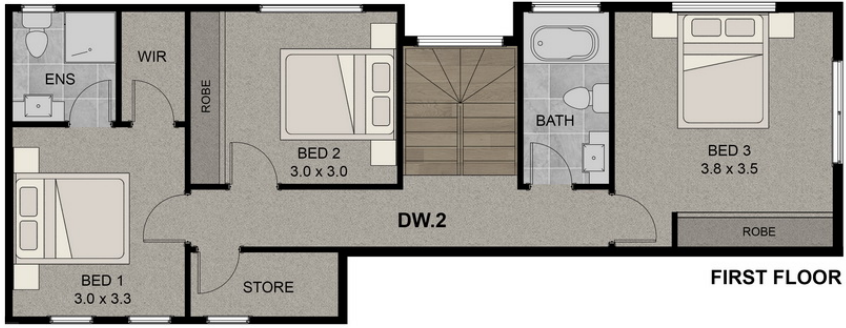
GROUND FLOOR	75 sqm
FIRST FLOOR	75 sqm
GARAGE	24 sqm
PORCH/ALFRESCO	4 sqm
POS	94 sqm



Note. All images are drawings depicted herein are for illustration purposes only. All measurements are approximate & individuals should rely on their own information. No responsibility is accepted by any parties for error or omission.



GROUND FLOOR



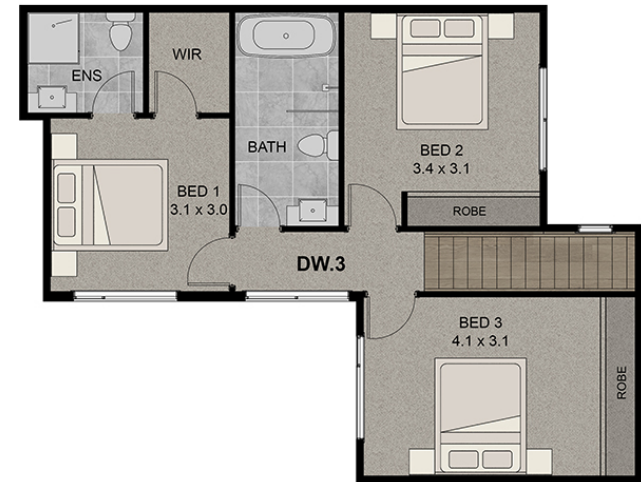
FIRST FLOOR

UNIT 2	3 2 3 2		
64 PANORAMA STREET, CLAYTON	GROUND FLOOR	54 sqm	
	FIRST FLOOR	70 sqm	
	GARAGE	37 sqm	
	PORCH	2.5 sqm	
	POS	75 sqm	
			<p>Note. All images are drawings depicted herein are for illustration purposes only. All measurements are approximate & individuals should rely on their own information. No responsibility is accepted by any parties for error or omission.</p>

GROUND FLOOR



FIRST FLOOR



UNIT 3

3 2 3 2

**64 PANORAMA STREET,
CLAYTON**

GROUND FLOOR	58 sqm
FIRST FLOOR	61 sqm
GARAGE	24 sqm
PORCH	1.7 sqm
POS	66 sqm



Note. All images are drawings depicted herein are for illustration purposes only. All measurements are approximate & individuals should rely on their own information. No responsibility is accepted by any parties for error or omission.