



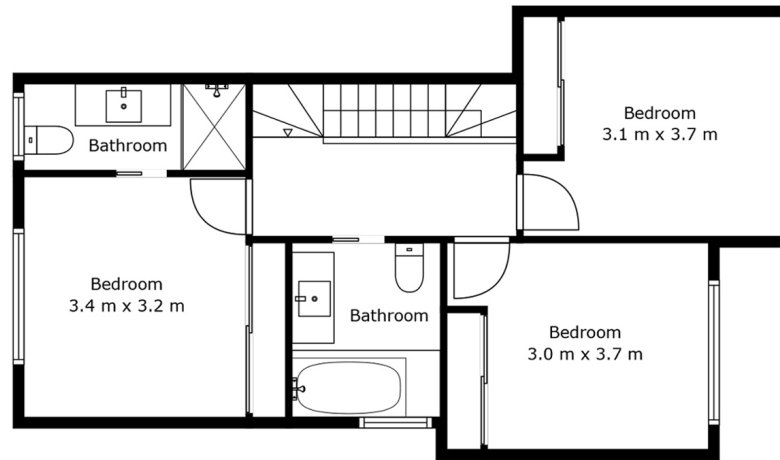
Unit 2, 7 Thompson Street, Clayton

Clayton 中心位置! 900米秒到 Clayton 火车站和莫纳什医院四房别墅, 当地知名builder承建! 35 分钟开车至墨尔本市中心经 M1 高速

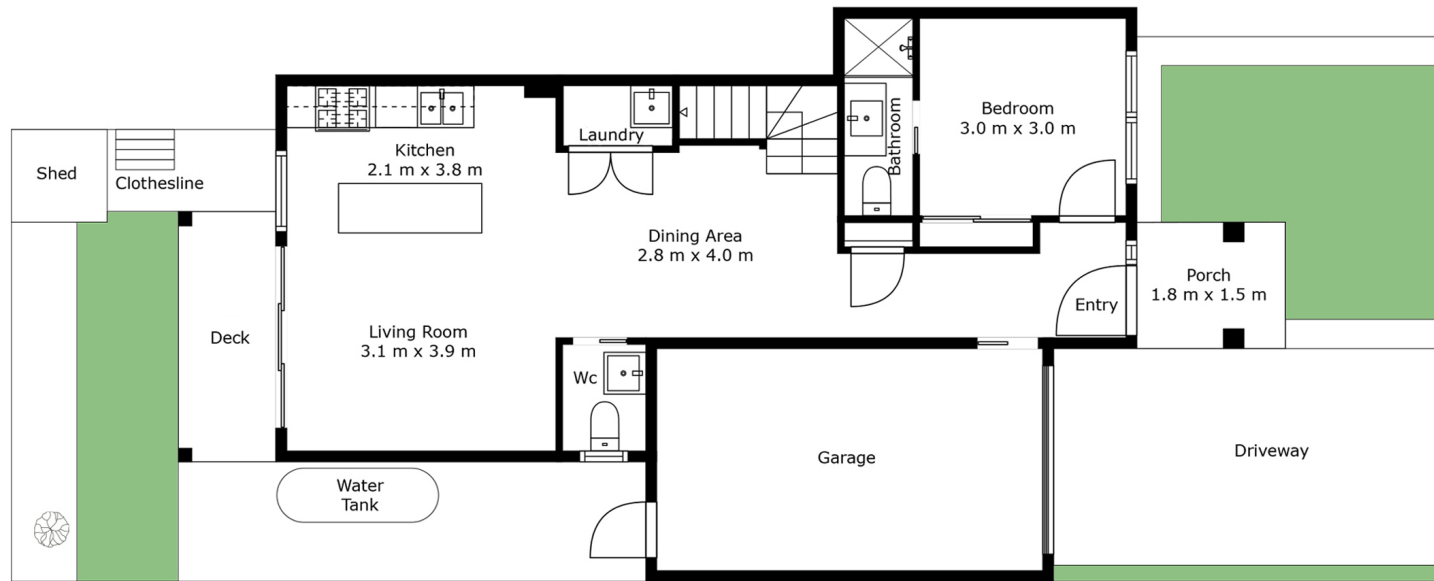
- 校区房
 - 6 分钟开车至 Clayton North 小学
 - 8 分钟开车至 South Oakleigh 中学
 - 7 分钟开车至 Monash 大学
- 交通杠杆
 - 维州迄今最大规模铁路建设: Suburban Rail Loop
 - 一期项目: 贯通Cheltenham、Clayton、Monash、Glen Waverley、Burwood 到 Box Hill 各大火车站
 - 900 米步行至 Clayton 火车站, 火车直达 Caulfield 及墨尔本市中心
- 购物中心
 - 3 分钟开车至 Clayton 商业街、Coles 超市
 - 6 分钟开车至 M-City 购物中心
 - 8 分钟开车至 Springvale IKEA
 - 9 分钟开车至 Chadstone 购物中心
- 公园
 - 500 米步行至 Meade 绿色保护区
 - 5 分钟开车至 Huntingdale 高尔夫场
- 医疗设施
 - 950 米步行至 Monash 医疗中心

Clayton Primary Location! 900m to Clayton Station & Monash Medical Centre 4-bedroom house, built by leading builders, only 35 mins to Melbourne CBD via M1 freeway!

- School Zone
 - 6 mins drive to Clayton North Primary School
 - 8 mins drive to South Oakleigh Secondary College
 - 7 mins drive to Monash University
- Connectivity
 - The biggest infrastructure investment is ever undertaken in Victoria – Suburban Rail Loop
 - Stage 1: Connect Cheltenham, Clayton, Monash, Glen Waverley, Burwood to Box Hill
 - 900m walk to Clayton Station, with direct access to Caulfield, Melbourne CBD
- Shopping
 - 3 mins drive to Clayton Shopping Centre, Coles
 - 6 mins drive to M-City Shopping Centre
 - 8 mins drive to Springvale IKEA
 - 9 mins drive to Chadstone - The Fashion Capital
- Surrounding Parks
 - 500m walk to Meade Reserve
 - 5 mins drive to Huntingdale Golf Club
- Medical Centre
 - 950m walk to Monash Medical Centre



First Floor



Ground Floor

UNIT 2	4  3  4  1+1 	
7 THOMPSON STREET CLAYTON VIC 3168	GROUND FLOOR	89 m ²
	FIRST FLOOR	60 m ²
	PORCH	2.5 m ²
	TOTAL FLOOR AREA	16.3 SQ / 151.5 m ²
	LAND SIZE	203 m ²
	TOTAL AREA	28.2 SQ / 263 m ²



The site plan and floor plan are not to scale, measurements are indicative and in metres. Bushes and trees are placed for illustration purposes. Plans should not be relied on. Interested parties should make and rely on their own enquiries.