

# REGATTA

COLLINS WHARF





Collins Wharf is on the land and waters of the Woiwurrung people of the Kulin Nation. We acknowledge their Elders past and present and their connection to Country and community.

Lendlease works across many locations, we have a responsibility to listen, learn, and walk alongside First Nations peoples to ensure our activities support the ongoing connection to lands, waters, cultures, languages and traditions.

# REGATTA

COLLINS WHARF





# DISCOVER LIFE ON THE WATER

Welcome to Collins Wharf, an exclusive waterfront neighbourhood, where Melbourne's most iconic street meets the harbour.





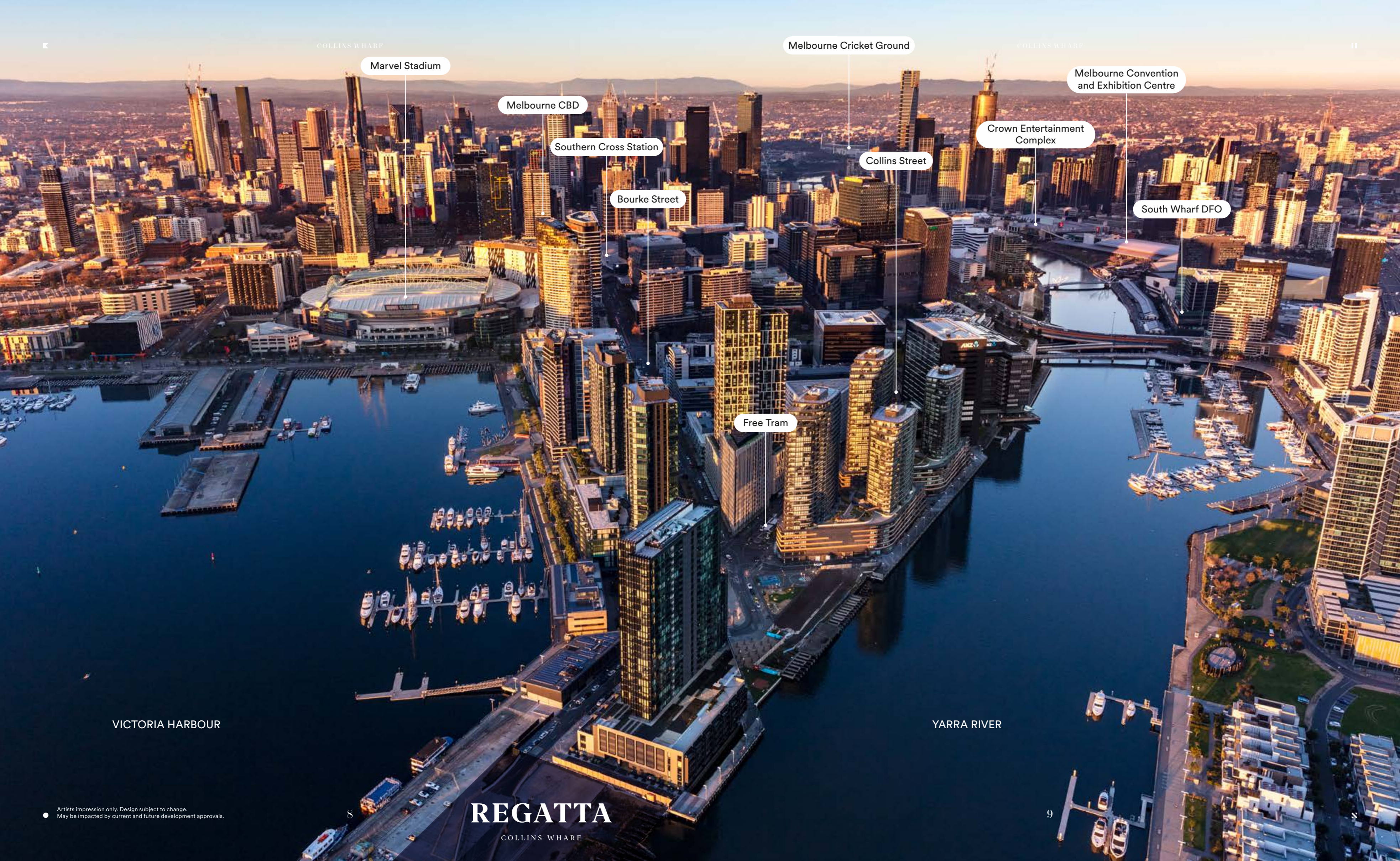
# WHERE THE CITY MEETS THE HARBOUR

Regatta at Collins Wharf provides a breathtaking modern lifestyle, while drawing inspiration from the location's past.

Collins Wharf is a unique dual-waterfront location offering stunning views and direct access to the best of city living – at one of the most prestigious addresses in Melbourne. Inspired by the wharf's nautical heritage, award-winning architects Warren and Mahoney have imagined a stunning residential masterpiece. Its shimmering façade reflects the surrounding water and captures the spirit of sails on the bay.

Sophisticated Collins Street Harbourhomes, Riverhomes with private water views, panoramic Skyhomes, and one-, two- and three-bedroom Waterfront Apartments provide the rare opportunity to live in tranquillity on the water – with the best of Melbourne city right on your doorstep.

Collins Wharf is your place to live well.



Marvel Stadium

Melbourne CBD

Southern Cross Station

Bourke Street

Melbourne Cricket Ground

Collins Street

Melbourne Convention and Exhibition Centre

Crown Entertainment Complex

South Wharf DFO

Free Tram

VICTORIA HARBOUR

YARRA RIVER

● Artists impression only. Design subject to change. May be impacted by current and future development approvals.



# WE'VE REIMAGINED COLLINS STREET

Regatta at Collins Wharf puts you moments away from the cultural heart of Australia and its endless number of things to see, do and experience.

Stay connected to all that's enticing about the inner city – and beyond.



## AN AREA ALIVE WITH POSSIBILITY



### PUTTING ON A SHOW

Take in an enchanting performance at Sidney Myer Music Bowl, try your luck at Crown Casino or catch the big game or a concert at Marvel Stadium and the MCG.



### THE CREATIVE SIDE

Exercise your mind at the Library at the Dock, a contemporary civic landmark overlooking Victoria Harbour. Take a front row seat at a concert at Hamer Hall, one of the Arts Centre's many magnificent venues, or explore the Docklands Public Art Walk, home to outdoor works that are integrated into the public landscape.



### WHERE ART LIVES

Peruse an exhibition at the National Gallery of Victoria, with its two galleries of thought-provoking work from around the country – and the rest of the art world. For art you can take home, visit APY Gallery and be captivated by the visual stories of the world's oldest living culture. Or if you like your art on screen, you can visit ACMI - Australia's national museum of screen culture, located in Fed Square.



### THE HEIGHT OF FASHION

Some of the biggest couture houses in the world call Melbourne's CBD home. Breathe new life into your wardrobe with masters of modern luxury and style.



### THE ESSENTIALS

Trusted grocery chains, artisan bakeries, delis and organic markets will help you pick up the ingredients you need, while trusted essential services offer convenient expertise and support for all ages.



### CONNECTED

Wherever you need to go and however you want to get there, outstanding connections means the choice is yours at Regatta at Collins Wharf. With a positive walking score, you can make your commute to work a leisurely stroll or a quick cycle, or jump on the freeway if you need to drive further afield.



**FILL UP YOUR CUP**

Start your day with a takeaway from your favourite barista or settle in for a long brunch at one of the beloved cafes within walking distance of Collins Wharf.



**CULINARY DELIGHTS**

Enjoy exquisite, elegant fine dining experiences from renowned chefs or find your next favourite secret spot in a phenomenal array of restaurants. From salumi bars to street food, the casual to the spectacular, you'll find it all just footsteps away.



**RAISE YOUR GLASS**

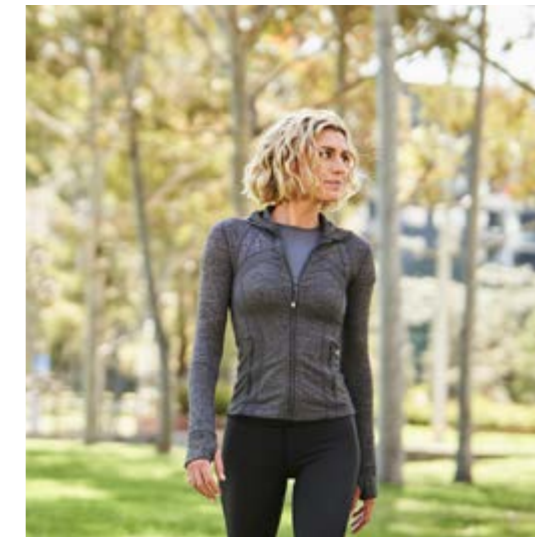
Raise a glass to everything Melbourne has to offer. Sip a cocktail in an eclectic laneway, dive into a deep wine list, pull up a chair for Friday drinks or toast another milestone.





### WELLNESS, YOUR WAY

A happier, healthier you is within reach with endless places to unwind, recharge and workout around Collins Wharf. Try a yoga class, book a massage or meditation session or get some fresh air as you travel via cycling and walking paths in and around Victoria Harbour and the CBD.



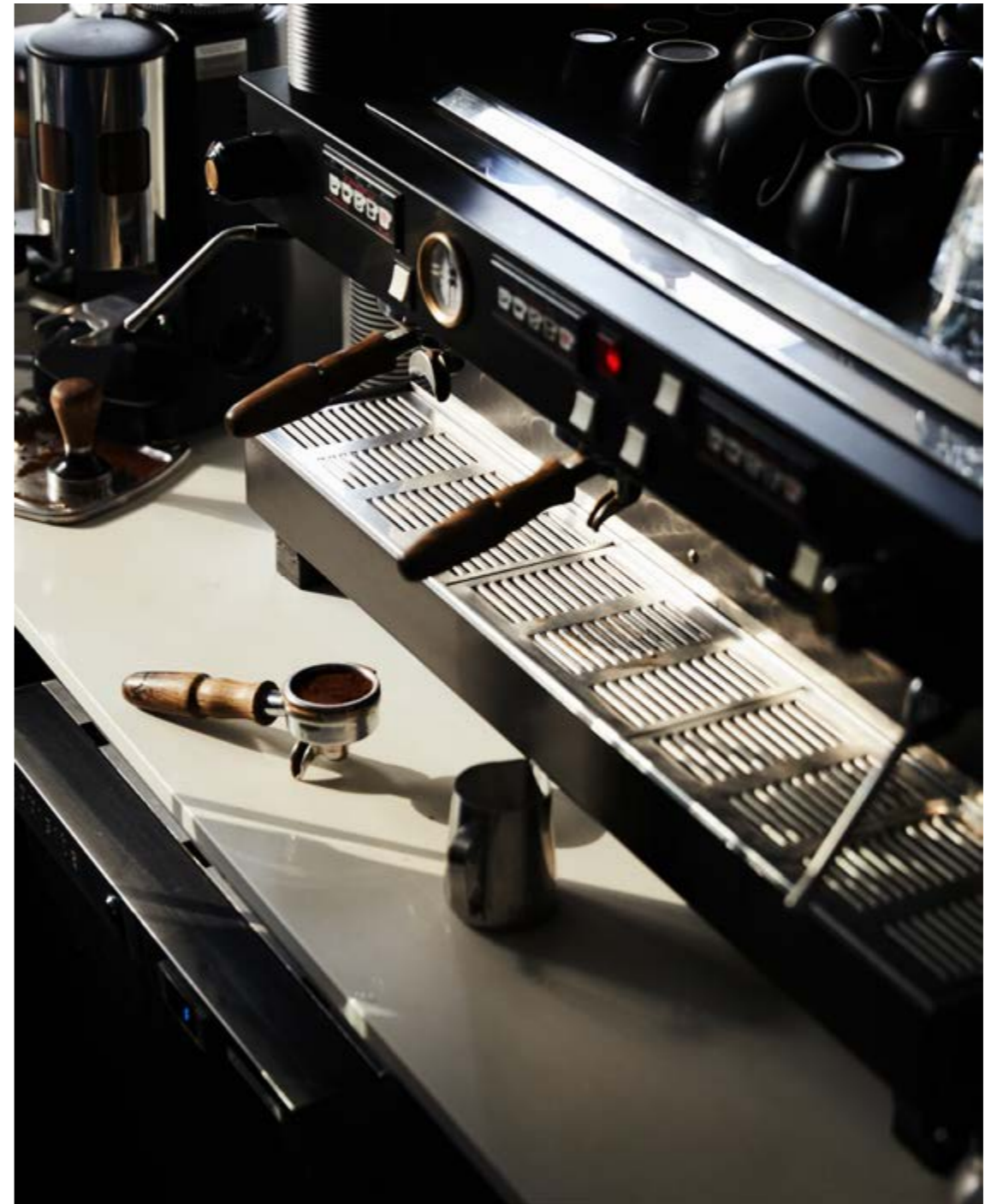
### A BREATH OF FRESH AIR

Parklands and sporting areas provide plenty of space to get out and get active, right on the waterfront. Take a walk with your four-legged friends and enjoy weekend biking adventures.



### GET ON BOARD

Set within the Free Tram Zone, getting around the city couldn't be more convenient. And with Melbourne's major train stations, Southern Cross Station and Flinders Street Station close by, it's also easy to explore further afield. Jump on the V/Line to visit regional Victoria by rail or the SkyBus to Tullamarine airport and fly away.





# THE ESSENCE OF WATERFRONT LIVING

Live a life of ease beside the water,  
from the glint of the morning sun on the river  
to the reflection of the city lights at night.



## DESIGNED BY WARREN AND MAHONEY

Responsible for bringing to life some of the most impressive projects in Australia and New Zealand, Warren and Mahoney embraces a multi-disciplinary approach informed by deep insights. This helps them better capture and reflect the identity of the places and communities they enhance.

Proudly punctuating their work with an adventurous Pacific spirit, Warren and Mahoney's team of global experts use their mastery of advanced technology and partnership model in each collaboration they take part in.

As a leading Pacific design practice, the firm takes pride in being an environmentally stable design leader, helping establish the New Zealand Green Building Council and playing a part in the development and piloting of Green Star tools.







## A SHIMMERING MASTERPIECE REFLECTING PRESTIGE AND NAUTICAL LIVING



Standing tall at 29 storeys, Regatta at Collins Wharf will demand – and earn – attention. Rising from the stunning water level into the glimmering tower above, its harmonious synchronicity reflects the beauty of the Yarra River, the harbour and the city.





The rippled appearance of bronze glass gives way to a reflective, angled façade as eyes are drawn upward, capturing the spirit and movement of sails on the bay.

The building also offers seamless access to walkways and green spaces along the Yarra, bringing even more vibrancy and vitality to the people who live, work and play alongside it.





# ELEVATE YOUR EXPECTATIONS

Regatta at Collins Wharf's breathtaking bronze-clad entrance, soaring four storeys, sets a new benchmark for service and style. Step inside and feel the essence of true luxury in every detail, where your dedicated concierge is ready to provide support with discretion and efficiency.



# EFFORTLESS TRANQUILITY

Living well has never been easier.

With stunning water vistas, the 25-metre residents' pool keeps you connected to the waterfront. Complete your morning laps or enjoy much-deserved tranquillity on a day bed as you look out towards the Yarra River and Victoria Harbour.

Welcome the same stunning waterfront outlook while you work out in your well-equipped residents' gym.

# THE COLLINS ROOM

Gather with friends and family and celebrate together in the stunning residents' lounge and dining room – with Victoria Harbour the spectacular backdrop for your private function.

Or host an exclusive viewing in the adjacent screening room for an intimate cinema experience.

# PANORAMIC VIEWS

Multiple rooftop spaces ensure you stay connected to the outdoors all year-round.

Your rooftop sanctuary awaits on Level 17, with sweeping water and city views, barbecues, and a glasshouse winter garden. For a more sheltered breath of fresh air, unwind on the Level 4 rooftop, with views stretching across the water.



## SERVICE & AMENITY



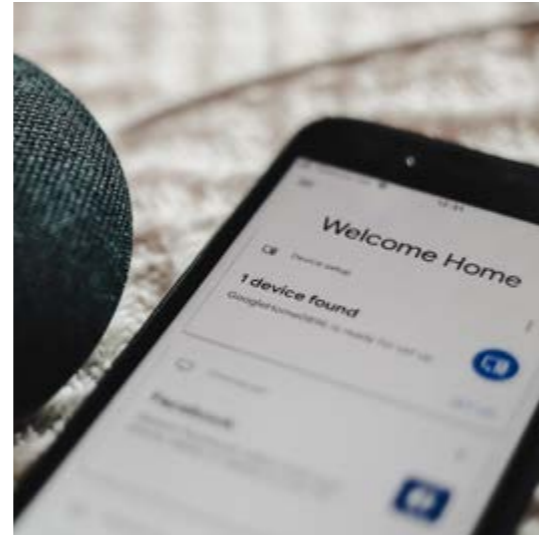
### LIFE MADE EASY

Enjoy five-star, hotel-style concierge convenience including booking services within the precinct, parcel delivery, collection and more – helping make life easier than ever.



### SUSTAINABLE LIVING

Regatta at Collins Wharf will be an all-electric building, built to environmental five star Green Star standards. With EV backbone infrastructure allowed for, you can rest assured knowing the building is future proofed if you wish to upgrade to enable connection to EV charging.



### TECHNOLOGY

Every residence comes ready for home automation, to help you make life easier. Enjoy the best of smart technology including video intercom, keyless entry and more. Plus, with high-speed fibre connection and WIFI throughout the building, you'll always stay connected.







# A STUNNING COLLECTION OF WATERFRONT APARTMENTS & HOMES

From sunrise over the city to sunset over the water,  
every day is more perfect than the next at your new  
waterfront retreat.

## LIVE WELL, BY THE WATER

### WATERFRONT APARTMENTS

One-, two- and three-bedroom residences offer accessible entry points to a Collins Wharf lifestyle – without compromise. Live the good life with state-of-the-art European appliances, premium finishes and flexible spaces that flow effortlessly, as well as a choice between river or harbour views.

## PREMIER COLLECTION

### HARBOURHOMES

The ten Collins Street Harbourhomes each offer pure decadence spread over four levels. From your own private lift and elegant staircase to a secluded rooftop terrace that's just for you, they offer a life reserved for the fortunate few.

### RIVERHOMES

With a limited collection of Riverhomes available, these premium residences make the most of their location. Some residences feature the flowing beauty of double-height living spaces while others offer expansive glass-framed river-frontage views that will never be built out.

### SKYHOMES

Welcome to the height of luxury. Each of the five two-storey Skyhomes provides panoramic scenes of Victoria Harbour and the Yarra River from dawn to dusk, while some penthouses offer double-height living spaces that focus all attention on the view.





# WATERFRONT APARTMENTS

Life is smooth sailing with a selection of light-filled apartments offering flexibility, convenience and incredible water views.



## REFINED CITY LIVING

● Artist impression only. Waterfront Apartment shown.  
● Design subject to change. View lines, fixtures and finishes may differ from that shown.

Featuring timeless interiors that flow effortlessly from open plan living to outdoor terraces or balconies, these apartments are designed for ambitious urban dwellers who aspire to live close to the pulse of the city. With flexible spaces ready to adapt for your lifestyle and home needs, they are an impeccable investment in your future.

Choose a contemporary Light or metropolitan Dark interior colour scheme, with a curated selection of quality finishes and materials.

Every bedroom is designed to offer ultimate comfort and maximise natural light – and make the most of stunning views of Victoria Harbour or the Yarra River.



## LIGHT SCHEME



Artist impression only. Waterfront Apartment bathroom Light scheme shown.  
Design subject to change. View lines, fixtures and finishes may differ from that shown.

Choose from two sophisticated colour schemes to make your Waterfront Apartment truly your own.

The Light scheme brings a sense of calm and tranquillity to your space – and leaves room for personal touches through your own furnishings and artwork.



Artist impression only. Waterfront Apartment kitchen Light scheme shown.  
Design subject to change. View lines, fixtures and finishes may differ from that shown.



## DARK SCHEME

Envelop yourself in the elegant sophistication of the Dark colour palette, that brings depth and interest to both your home and décor.



Artist impression only. Waterfront Apartment kitchen Dark scheme shown.  
Design subject to change. View lines, fixtures and finishes may differ from that shown.



# HARBOURHOMES, RIVERHOMES & SKYHOMES

Live first class with our Premier Collection of stunning residences, for those who appreciate the finer things in life.



## DISCOVER THE ULTIMATE IN WATERFRONT LUXURY

Regatta at Collins Wharf's limited Premier Collection is your opportunity to experience waterfront living like no other. The exclusive selection of residences offer breathtaking river or harbour views, carefully crafted with flawlessly executed details and high-end features and fittings.

From private entrances and open, spacious layouts to natural stone features, porcelain tiles and quality European appliances, this is the embodiment of luxury.





Designed to impress and composed with meticulous precision, it's the opulent details that make Regatta at Collins Wharf's Premier Collection truly unique.

● Artist impression only. Harbourhome shown. Design subject to change. View lines, fixtures and finishes may differ from that shown.



Riverhomes redefine luxury. Discover a riverside oasis, with its own private footbridge entrance from the riverfront boardwalk, timeless premium interiors and uninterrupted glittering water views.





Discover unrivalled sophistication and lavish interiors, with flowing spaces that evoke the calmness of the water beyond – and provide the ultimate living experience. Find it all in the Premier Collection at Regatta at Collins Wharf.



# MELBOURNE'S HISTORIC HARBOUR

One of the world's most famous and liveable locales.

Nestled between the Yarra River and Victoria Harbour, Collins Wharf is a place of rich history, diversity and beautifully modern waterfront homes.

## EMBRACING MELBOURNE'S MARITIME HERITAGE TO GUIDE A BOLD VISION FOR THE FUTURE

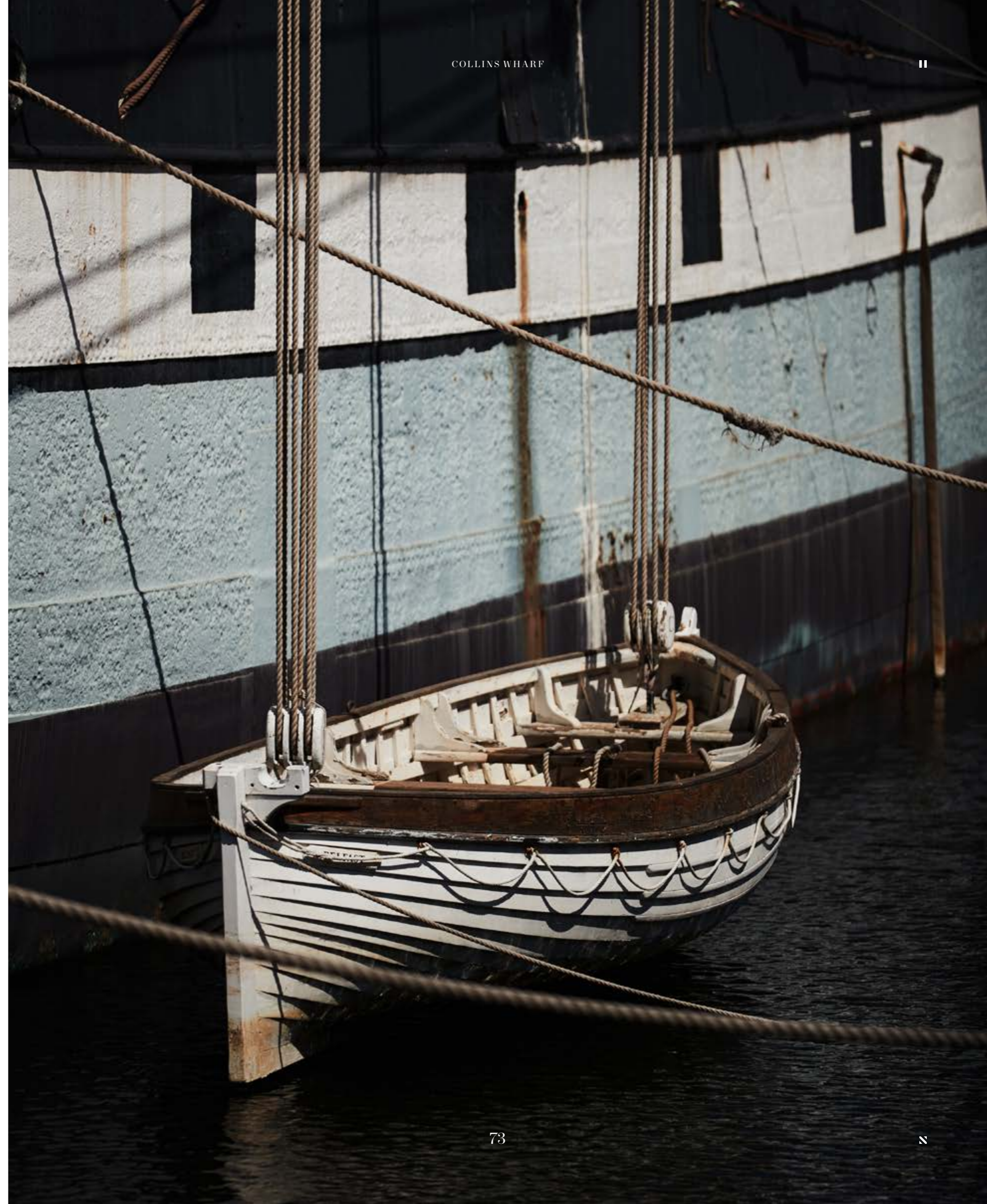


The Yarra River, or Birrarung, has always been a focal point of life for the Woiwurrung people, who fished and foraged along its banks for generations.

During Melbourne's 19th-century inception, the river became a new source of opportunity and prosperity, playing a crucial role in the area's ascension to one of the world's most famous and liveable locales.

A hub of activity during Melbourne's foundation, the riverfront was the epicentre of some of the city's earliest commercial and residential development.

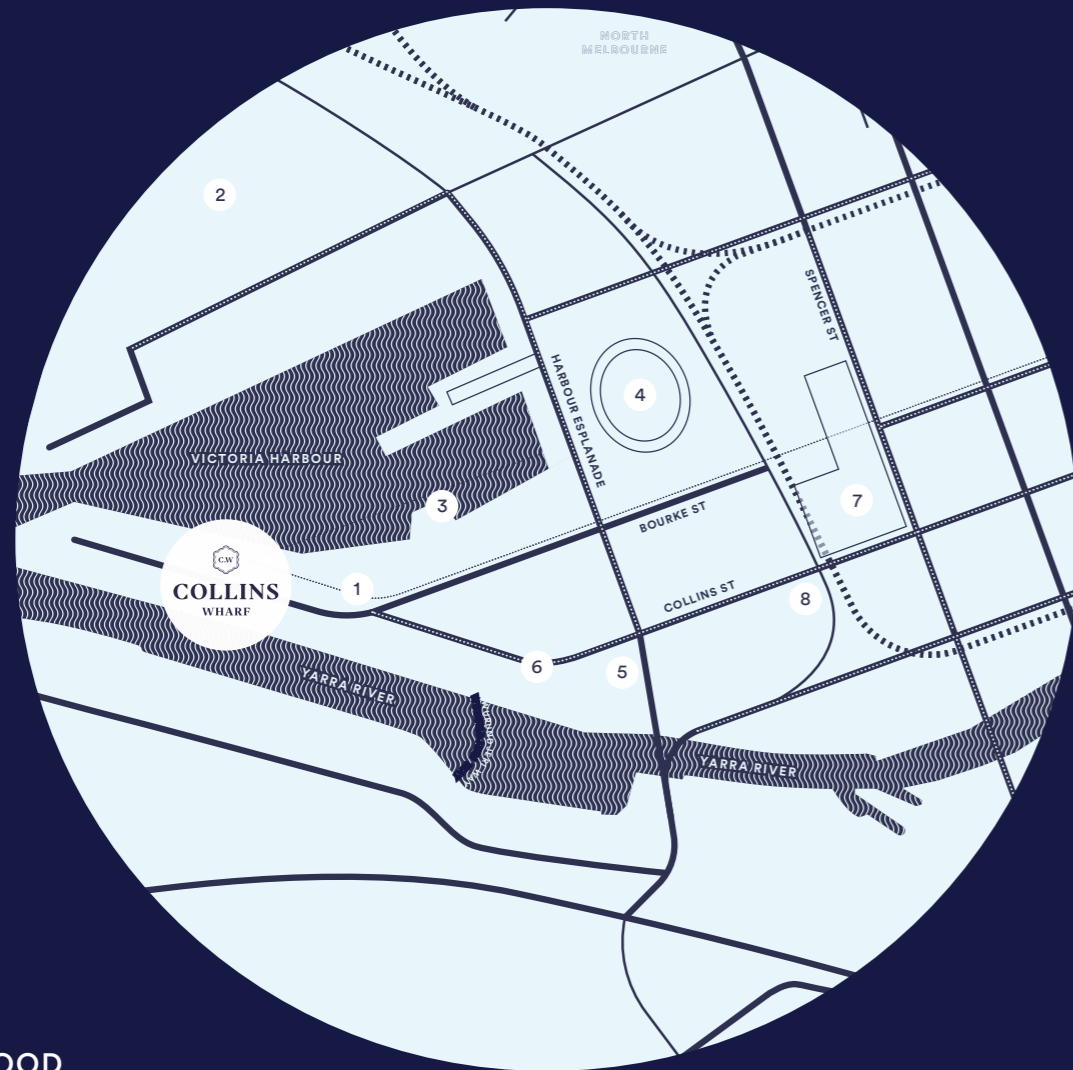
As Melbourne developed, so did the area's commercial prominence. The advent of rail infrastructure unlocked new industry, enhancing the Docklands' growing stature as a buzzing port. And the addition of Victoria Dock and West Melbourne Dock created lasting harbour icons.



# TRANQUILITY OF THE WATER, ACCESSIBILITY OF THE CITY

Collins Wharf is the next chapter in Victoria Harbour's vision – and your chance to live life on the water, at the city's edge. Collins Wharf holds prime position between the river and the harbour, just five minutes by tram or a short walk from the lively Melbourne CBD. It is a sanctuary from the city with fast connections.

A vibrant, sophisticated waterfront neighbourhood home to one of the city's most prestigious addresses, Collins Wharf is ideally placed amongst distinguished retail, prominent corporate headquarters and Melbourne's world-famous cultural attractions and laneways.



## YOUR NEIGHBOURHOOD

### 1 LIBRARY AT THE DOCK

A fully integrated community and cultural space, offering a modern library service with recording studio, bookable spaces and free WIFI.

### 2 THE DISTRICT DOCKLANDS

Art to fashion, bars to fresh food - a hub for waterfront dining, retail and entertaining.

### 3 RIVER CRUISES

Cruises and boat hire offer unique sightseeing opportunities throughout the city's waterways, including Port Phillip ferries.

### 4 MARVEL STADIUM

The go-to destination for major sporting events and big-name concerts.

### 5 DOCKLANDS PARK

Landscaped gardens offering free barbecue facilities, public art and an interactive playground.

### 6 COLLINS STREET TRAM

Located in the Free Tram Zone providing easy access from Victoria Harbour to the city.

### 7 SOUTHERN CROSS STATION

V/Line regional rail, metropolitan trains, The Overland rail service, connections to Sydney and coach services to Melbourne's airports.

### 8 MELBOURNE QUARTER

A buzzing precinct with offices, apartments, retail and hospitality venues. Home to the Sky Park, a public green space nestled high above the bustling Collins Street.

## YOUR CITY

### 1 CROWN ENTERTAINMENT COMPLEX

A spectacular riverside entertainment complex with hotels, spas, casino and luxury retail. Restaurants include Nobu, Bistro Guillaume and Rockpool.

### 2 ARTS CENTRE MELBOURNE

Under its famous spire, Australia's largest and busiest performing arts centre stages thousands of performances and events annually.

### 3 EMPORIUM

One of Australia's largest designer precincts, with unique dining outlets, local and international fashion and world class architecture.

### 4 FLINDERS STREET STATION

A famous meeting place for Melburnians and the busiest suburban railway station in the Southern Hemisphere.

### 5 MELBOURNE CONVENTION AND EXHIBITION CENTRE

Unique venue by the South Bank, hosting more than 1,000 events each year and home to the LUME.

### 6 NATIONAL GALLERY OF VICTORIA

The oldest, most visited art gallery in Australia, containing over 76,000 works spanning thousands of years.

### 7 MELBOURNE UNIVERSITY

Victoria's oldest sandstone university, offering academic, sporting and cultural programs. Other universities located within Melbourne's CBD, include RMIT, LaTrobe and Monash University.



## REALISED BY LENDLEASE: CREATING THE WORLD'S MOST LIVEABLE PLACES



277 FIFTH AVENUE, NEW YORK



ONE CIRCULAR QUAY, SYDNEY



CENTRAL PARK TOWER, NEW YORK

LENDLEASE STRIVES TO CREATE BUILDINGS THAT ENRICH THE LIVES OF THE PEOPLE WHO INHABIT THEM, AND PLACES THAT LEAVE A POSITIVE LEGACY.

Ensuring you live well is at the heart of every home we create. At Lendlease we know how profoundly your home is intrinsic to your way of life – and we want you to love and be proud of yours.

That means creating homes that suit your life, now and into the future. It's about creating places that connect you with others and immerse you in your environment. And it's about understanding that great homes are located in vibrant, thriving communities.

From luxury residential buildings to large-scale commercial and urban regeneration projects, our vision and forward-thinking approach has seen the creation of globally

recognised cornerstones and symbols of the communities, cities and the countries they inhabit. Projects like Sydney Opera House, Malaysia's Petronas Twin Towers and award-winning residential towers in Sydney and New York.

With a history spanning more than 60 years, Lendlease has created some of the world's most iconic landmarks and established itself as a leading global integrated real estate and investments group. And with a development portfolio that includes the Americas, Europe, Asia and Australia, our name has become synonymous with quality and delivery.



## OUR MISSION ZERO

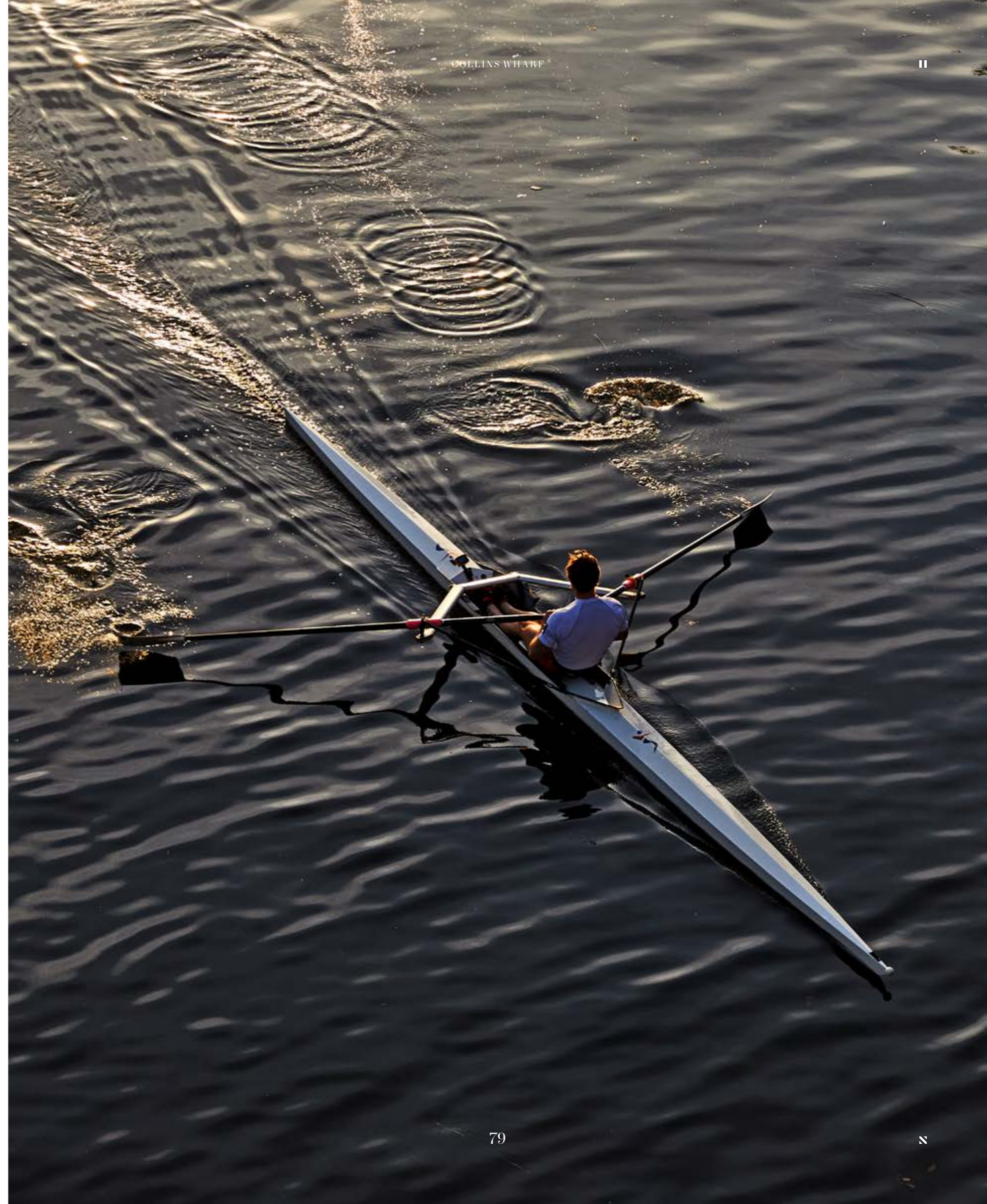


DARLING SQUARE, SYDNEY

A community can't thrive if the world around it doesn't. At Lendlease, we take our responsibility to the planet seriously.

Lendlease is dedicated to leading the evolution of our industry to be truly sustainable—environmentally, socially and economically—so we create the best places for people today and for generations to come.

Our Mission Zero initiative, based on ambitious science-based emissions reductions targets, is our commitment to the planet. We intend to reach net zero carbon emissions by 2025 and zero by 2040.





# DISCOVER LIFE ON THE WATER

Waterfront living at Regatta at Collins Wharf sets a new standard in redefining bespoke luxury. It provides an unparalleled dual-waterfront lifestyle where tranquillity and urbanity are in perfect balance.

We invite you to discover a life on water, one that will captivate the senses in a location like no other.





[collinswharf.com](http://collinswharf.com)