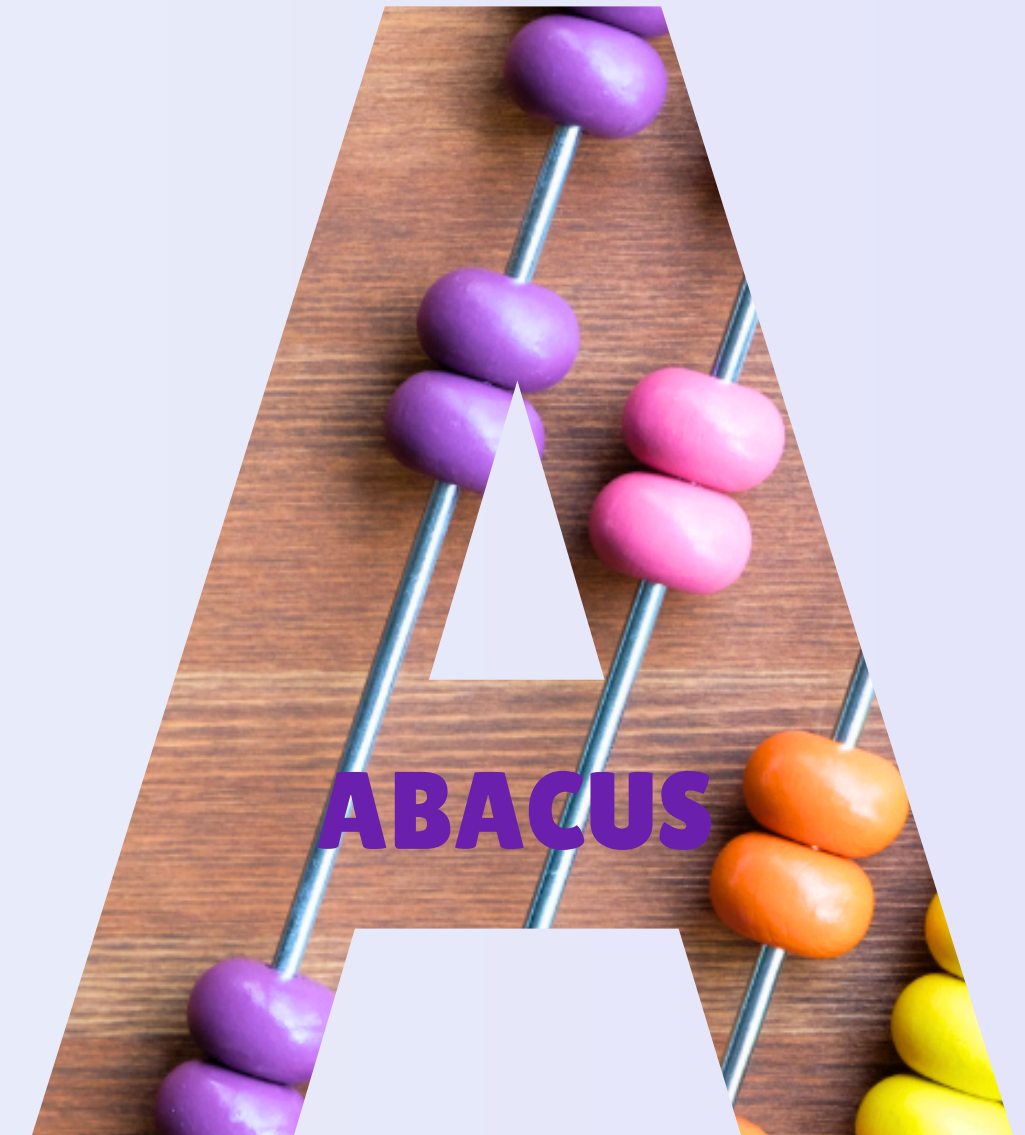


# CAPABILITIES BREIFING

UNLEASHING THE POWER OF FUTURISTIC  
TECHNOLOGY

**WEBSITE:**

**[ABACUSETECH.COM](http://ABACUSETECH.COM)**



**Emerging Technologies™**



# ABOUT US

## Count on Abacus

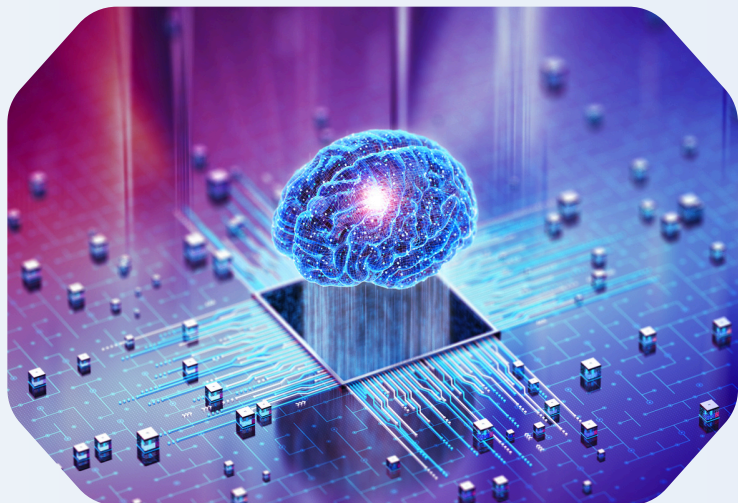
**Abacus Emerging Tech** is a **Women-Owned Small Business (WOSB)** that pioneers disruptive, futuristic, innovative, and superior solutions that meet GSA's Emerging Technology intent to mature high-impact capabilities and transform mission outcomes rapidly. We integrate advanced Artificial Intelligence (AI) and Machine Learning (ML), Next-Generation Cybersecurity, and sophisticated Data Analytics to deliver scalable, secure, and decision-advancing systems that accelerate operations, reduce risk, and enable transformational change.

## Core Values

- Innovation through intelligence
- Collaboration through technology
- Security through precision



# CORE CAPABILITIES



- **Artificial Intelligence and Machine Learning:** Driving intelligent automation, predictive analytics, and data-informed decision-making across missions.



- **Data Analytics and Visualization:** Transforming complex data into actionable insights that guide strategic outcomes and innovation.



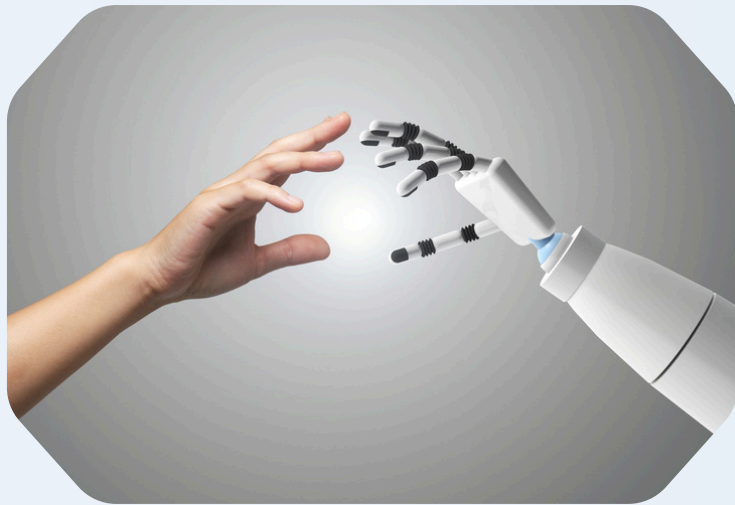
- **Cybersecurity and Zero Trust Architecture:** Securing systems, networks, and data with proactive defense and continuous monitoring.



- **Cloud Computing:** Delivering scalable infrastructure and on-demand computing power to support advanced workloads, quantum integration, and enterprise agility.



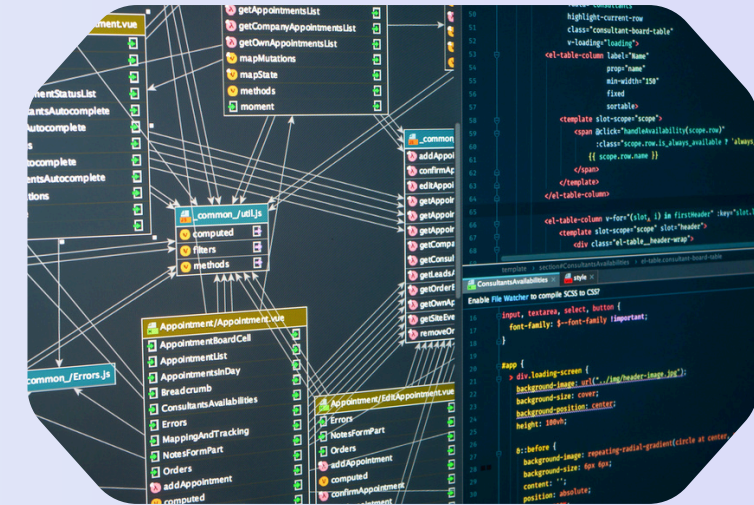
# CORE CAPABILITIES



- **Robotic Process Automation (RPA):**  
It is the process of having robots or a set of code work alongside humans to increase efficiency. Doing mundane or repetitive tasks such as rules-based digital tasks, like logging into applications, copying and pasting data, and processing forms.



- **Internet of Things (IoT):**  
Having physical objects all talking over a network and interacting with each other either through the network or through physical means.



- **DevSecOps:**  
Integrating security, development, and operations to deliver secure, agile, and reliable software solutions.



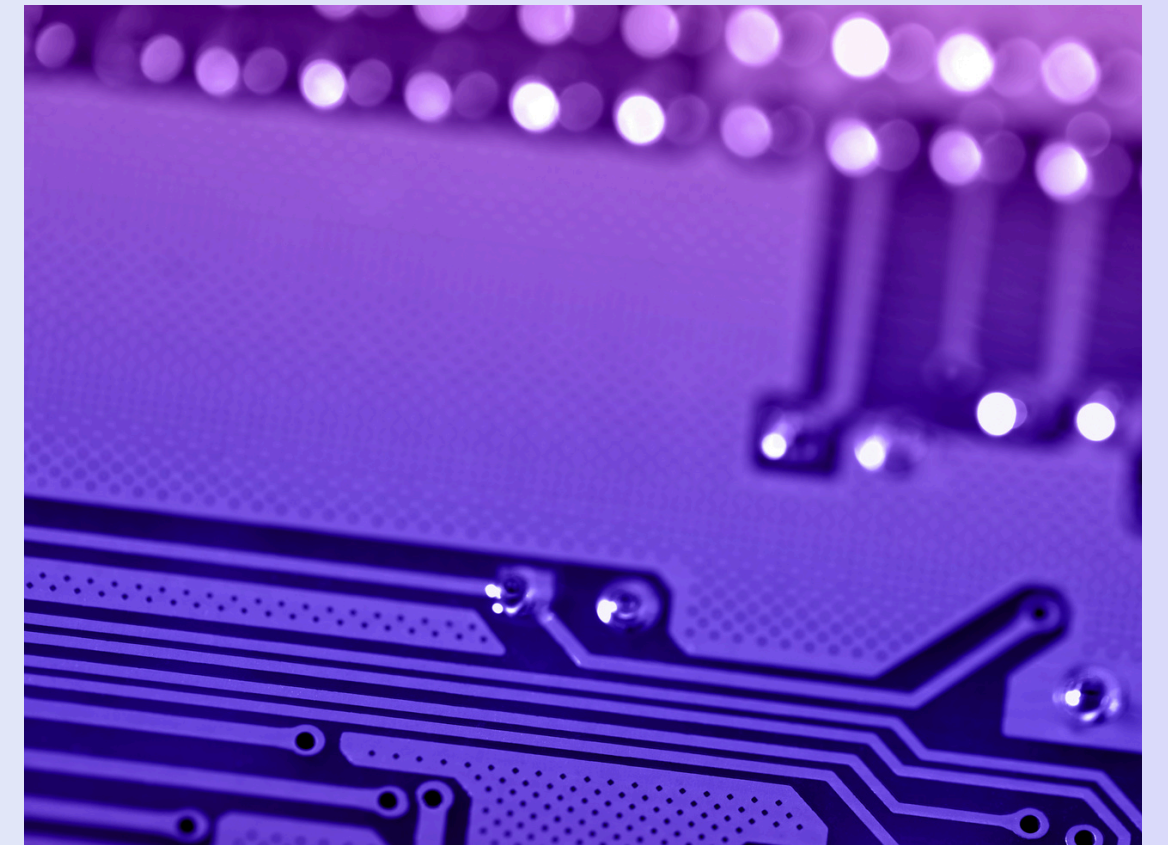
# CORE CAPABILITIES

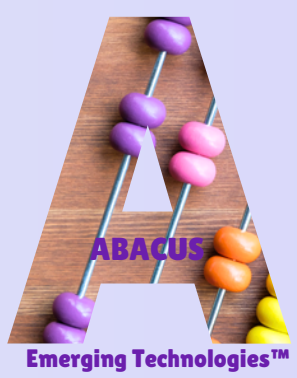
## NAICS

- **518210** – Computing Infrastructure Providers, Data Processing, Web Hosting, and Related Services
- **541512** – Computer Systems Design Services
- **541511** – Custom Computer Programming Services
- **541519** – Other Computer Related Services
- **541715** - Research and Development in the Physical, Engineering, and Life Sciences
- **541330** - Engineering Services
- **541611** - Administrative Support Services
- **541990** - All Other Professional, Scientific, and Technical Services
- **541690** - Other Scientific and Technical Consulting Services

## Small Business

- Women Owned Small Business (**WOSB**)
- Small Disadvantaged Business (**SDB**)
- Economically Disadvantaged Women-Owned Small Business (**EDWOSB**)





# EMERGING TECHNOLOGIES

## ARTIFICIAL INTELLIGENCE AND MACHINE LEARNING

Abacus leverages advanced artificial intelligence and machine learning to power **intelligent automation, predictive analytics, and real time decision support**. Our AI and ML capabilities transform complex data into meaningful insights that enhance mission performance, reduce operational burden, and enable smarter, faster actions across any environment.



### DESCRIPTION

AI and ML systems learn from data to automate processes, detect patterns, and deliver predictive insights.



### ABACUS CAPABILITY FOCUS

Development and integration of AI and ML models for automation, forecasting, anomaly detection, natural language processing, and decision support.



### IMPACT ON MISSION OUTCOMES

Improves accuracy and speed, enhances situational awareness, enables proactive decision making, and drives mission success through data informed intelligence.



# EMERGING TECHNOLOGIES

## DATA ANALYTICS

Abacus transforms complex data into clear insights that drive operational strategy and measurable outcomes. Our analytics and visualization platforms help clients track performance, identify trends, and anticipate future challenges. By combining **real-time dashboards with AI-powered interpretation**, Abacus enables smarter, faster, and more strategic decision-making.

### DESCRIPTION

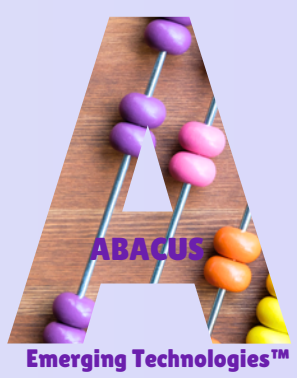
Converts raw data into actionable intelligence for real-time insights.

### ABACUS CAPABILITY FOCUS

Builds custom analytics dashboards and visualization platforms for government clients.

### IMPACT ON MISSION OUTCOMES

Empowers evidence-based decisions, enhances transparency, and measures mission impact.



# EMERGING TECHNOLOGIES

## CLOUD COMPUTING

Cloud computing powers scalability, flexibility, and innovation across every mission environment. Abacus leverages cloud technologies to **modernize infrastructure, optimize performance, and ensure secure, data-driven operations** across agencies and enterprises.

### **DESCRIPTION**

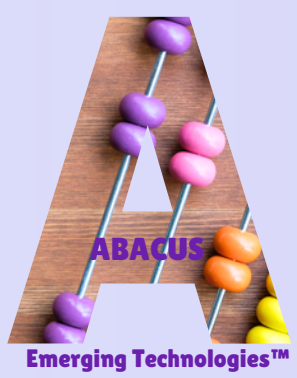
Provides on-demand access to computing resources, storage, and services through virtualized environments.

### **ABACUS CAPABILITY FOCUS**

Design and deployment of secure, scalable cloud architectures that support AI/ML, analytics, and emerging technologies.

### **IMPACT ON MISSION OUTCOMES**

Accelerates modernization, enhances collaboration, and ensures resilient and agile operations.



# EMERGING TECHNOLOGIES

## CYBERSECURITY

At Abacus, cybersecurity is built into every layer of technology. Our Zero Trust approach ensures that verification is continuous, access is controlled, and data remains secure from endpoint to cloud. **Through active threat monitoring, advanced encryption, and AI-driven defense**, we help clients stay ahead of evolving cyber risks while maintaining compliance and trust.



### DESCRIPTION

Protects digital infrastructure and sensitive data from evolving cyber threats.



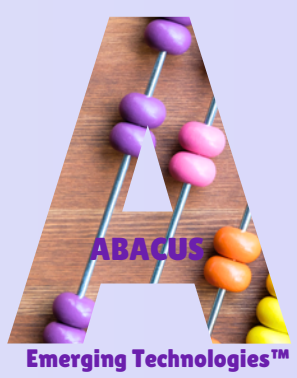
### ABACUS CAPABILITY FOCUS

Implements Zero Trust frameworks, continuous monitoring, and AI-driven threat detection.



### IMPACT ON MISSION OUTCOMES

Strengthens operational resilience, protects national assets, and builds digital trust.



# EMERGING TECHNOLOGIES

## ROBOTIC PROCESS AUTOMATION (RPA)

Abacus implements Robotic Process Automation to eliminate repetitive, manual tasks and enable digital efficiency. Our RPA solutions integrate seamlessly with enterprise systems to **streamline workflows** in procurement, finance, HR, and IT. By deploying intelligent bots, we reduce human error, accelerate delivery times, and allow teams to focus on higher-value mission objectives.

### DESCRIPTION

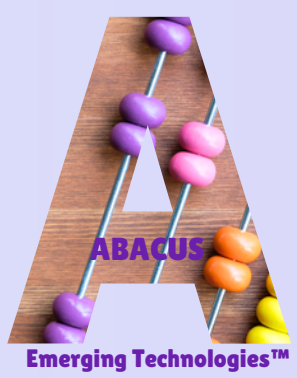
Automates repetitive, rules-based tasks to enhance efficiency.

### ABACUS CAPABILITY FOCUS

Designs and deploys scalable RPA bots that streamline procurement, HR, and finance workflows.

### IMPACT ON MISSION OUTCOMES

Our team operates within a management framework designed to maximize efficiency and effectiveness, ensuring everyone is focused on the right priorities and executing each task with precision.



# EMERGING TECHNOLOGIES

## INTERNET OF THINGS (IOT)

The Internet of Things connects systems, sensors, and assets across physical and digital networks. Abacus utilizes IoT to deliver smarter, more responsive ecosystems that **enhance visibility, automation, and mission control in real time.**

### **DESCRIPTION**

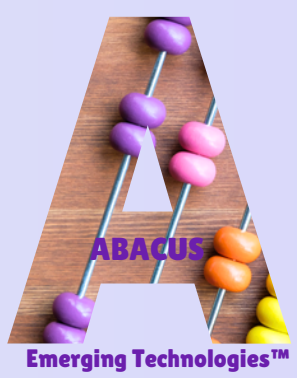
Integrates connected devices and sensors to collect and analyze real-time operational data.

### **ABACUS CAPABILITY FOCUS**

Implementation of secure IoT frameworks that connect field assets with centralized data platforms for predictive insights.

### **IMPACT ON MISSION OUTCOMES**

Improves situational awareness, operational efficiency, and proactive decision-making across critical mission areas.



# EMERGING TECHNOLOGIES

## DEVSECOPS

Abacus embeds security into every stage of software development through DevSecOps. By **integrating automated testing, continuous integration/continuous delivery (CI/CD), and threat detection** into the development lifecycle, we deliver rapid, secure, and scalable solutions. Our DevSecOps approach empowers organizations to innovate with confidence while minimizing risk.



### DESCRIPTION

Embeds security across the entire software development lifecycle.



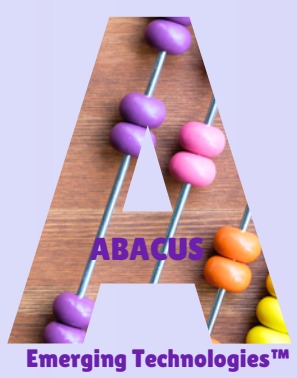
### ABACUS CAPABILITY FOCUS

Integrates automated testing, vulnerability scanning, and CI/CD pipelines.



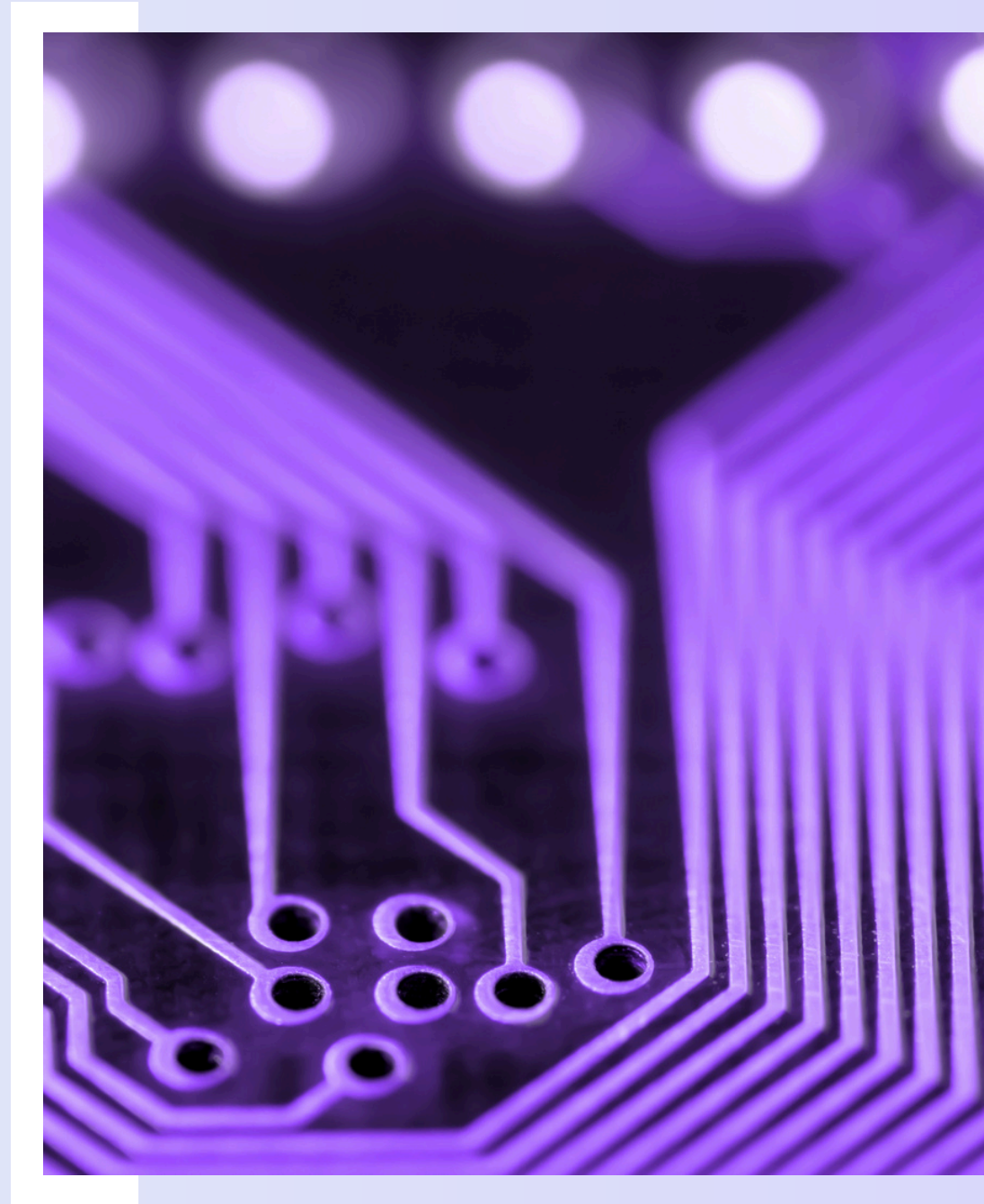
### IMPACT ON MISSION OUTCOMES

Faster delivery of more secure applications that adapt to evolving requirements.



# OUR FRAMEWORK: HOW ABACUS DRIVES INNOVATION AND RESULTS

- **We assess client needs:** current systems, data maturity, risk posture, and procurement/contract framework.
- **We apply a modular architecture:** selecting the right mix of AI, blockchain, IoT, or RPA for the specific business problem.
- **We emphasize governance & security:** establishing frameworks for data use, transparency, ethical deployment, and audibility.
- **We deliver outcomes:** faster procurement cycles, better supplier/supply-chain visibility, cost savings, improved risk management, and more responsive operations.
- **We support scaling:** piloting solutions, then scaling across divisions or geographies, ensuring sustainable growth.





# CONTACT US

Count on Abacus!



**President and CEO**

Louise Venkatesan

lvenkatesan@abacusetech.com

(301) 651-0946

## OUR PARTNERS



[www.abacusetech.com](http://www.abacusetech.com)

