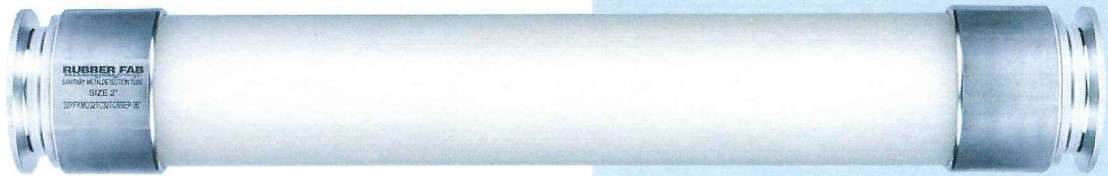


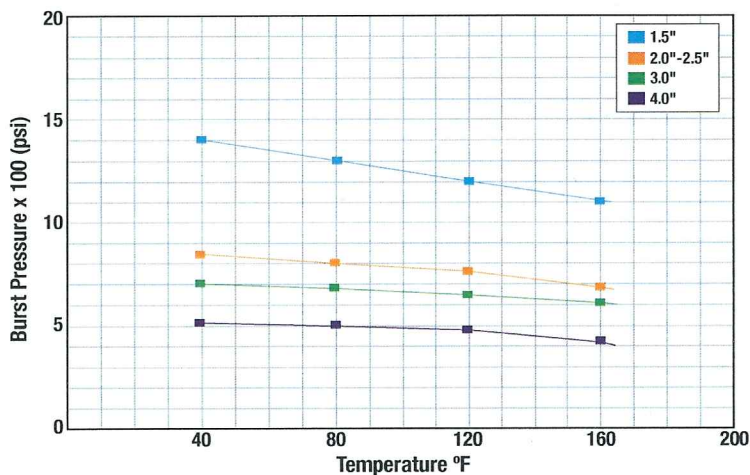


# Rubber Fab Technology Group's **SANITARY METAL DETECTION TUBES**



All Sanitary Metal Detection Tube Assemblies are manufactured using steam-cleanable USDA, FDA approved schedule 80 PVDF pipe suitable for system temperatures of -40°F to +240°F and 316L Sanitary Tri-Clamp Connections.

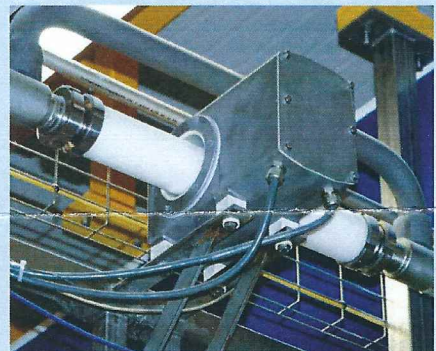
**Technical Data**



Notes:

1. Burst pressure based on tensile strength:  $B.P. = 2(T.S. \times Wall) / O.D.$
2. To calculate working pressure, divide burst pressure by a safety factor of 3
3. Pressure calculated for tubing only. Connections and ends must be calculated separately.

SIZE	PART NUMBER
1.5"	24RFKMD24TC24TCSS
2"	32RFKMD32TC32TCSS
2.5"	40RFKMD40TC40TCSS
3"	48RFKMD48TC48TCSS
4"	64RFKMD64TC64TCSS



**RUBBER FAB**  
*technologies group*

26 Brookfield Drive • Sparta, NJ 07871  
973.579.2959 • 866-442-2959 Toll Free  
973.579.7275 Fax • [www.rubberfab.com](http://www.rubberfab.com)

**Air-Fluid Tech, Inc.**  
**10936 N. Port Washington Rd**  
**Suite 241**  
**Mequon, WI 53092 - 5031**

**Contact Us:**  
**(414) 355 - 9597**  
**[peter@airfluidtech.com](mailto:peter@airfluidtech.com)**