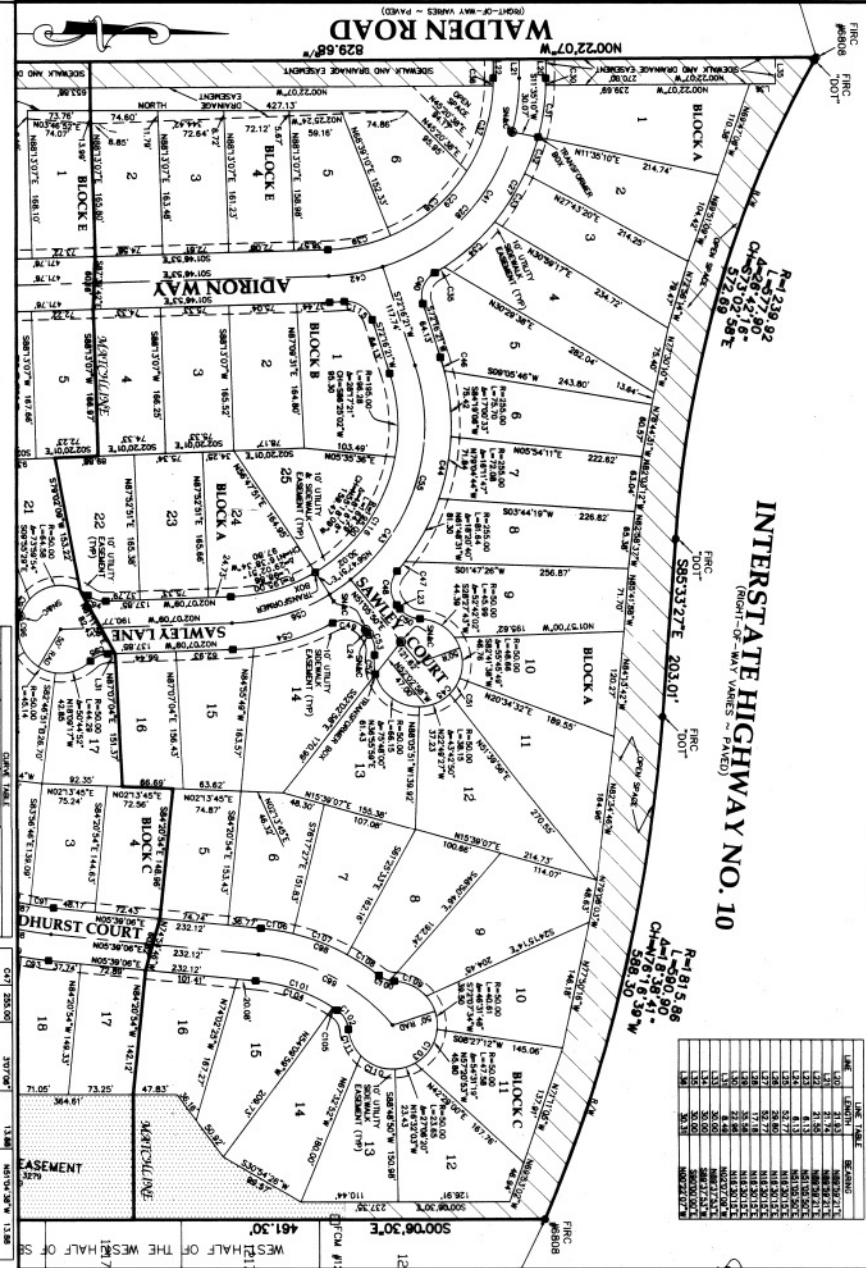


ADDIRON WOODS

INTERSTATE HIGHWAY NO. 10



LINE	LENGTH	BEARING
LINE 1	41.24	S 87° 18' 30" W
LINE 2	73.83	N 87° 18' 30" E
LINE 3	51.13	S 87° 18' 30" W
LINE 4	113.91	N 87° 18' 30" E
LINE 5	52.72	S 87° 18' 30" W
LINE 6	52.72	N 87° 18' 30" E
LINE 7	52.72	S 87° 18' 30" W
LINE 8	52.72	N 87° 18' 30" E
LINE 9	52.72	S 87° 18' 30" W
LINE 10	52.72	N 87° 18' 30" E

SURVEYOR'S CERTIFICATION:
 I hereby certify that this survey was made under my
 responsible direction and supervision, is a correct
 representation of the land surveyed, that the Permanent
 monuments and bearings are as shown on the plat and
 complies with both Chapter 177 of the Florida Statutes
 and with the minimum technical standards for Land
 Surveying (F.A.C. 12G17-01)

JAMES T. RODDENBERRY
 Surveyor & Mapper, P.L.L.C. No. 4281

DATE: 09/19/05

SURVEYOR'S SEAL

- LEGEND**
- SET 5/8" x 1/4" x 1/8" ROD #1760
 - UNLESS NOTED OTHERWISE
 - OPEN TRIANGULAR POINT
 - CIRCULAR POINT
 - POINT OF BEGINNING
 - POINT OF INTERSECTION
 - POINT OF DISTANCE
 - POINT OF ADJACENT PROPERTY
 - SET 1" x 1" x 1/2" CONCRETE MONUMENT
 - SET 2" x 2" x 1" CONCRETE MONUMENT
 - SET 3" x 3" x 1" CONCRETE MONUMENT
 - SET 4" x 4" x 1" CONCRETE MONUMENT
 - SET 6" x 6" x 1" CONCRETE MONUMENT
 - SET 8" x 8" x 1" CONCRETE MONUMENT
 - SET 10" x 10" x 1" CONCRETE MONUMENT
 - SET 12" x 12" x 1" CONCRETE MONUMENT
 - SET 14" x 14" x 1" CONCRETE MONUMENT
 - SET 16" x 16" x 1" CONCRETE MONUMENT
 - SET 18" x 18" x 1" CONCRETE MONUMENT
 - SET 20" x 20" x 1" CONCRETE MONUMENT
 - SET 22" x 22" x 1" CONCRETE MONUMENT
 - SET 24" x 24" x 1" CONCRETE MONUMENT
 - SET 26" x 26" x 1" CONCRETE MONUMENT
 - SET 28" x 28" x 1" CONCRETE MONUMENT
 - SET 30" x 30" x 1" CONCRETE MONUMENT
 - SET 32" x 32" x 1" CONCRETE MONUMENT
 - SET 34" x 34" x 1" CONCRETE MONUMENT
 - SET 36" x 36" x 1" CONCRETE MONUMENT
 - SET 38" x 38" x 1" CONCRETE MONUMENT
 - SET 40" x 40" x 1" CONCRETE MONUMENT
 - SET 42" x 42" x 1" CONCRETE MONUMENT
 - SET 44" x 44" x 1" CONCRETE MONUMENT
 - SET 46" x 46" x 1" CONCRETE MONUMENT
 - SET 48" x 48" x 1" CONCRETE MONUMENT
 - SET 50" x 50" x 1" CONCRETE MONUMENT
 - SET 52" x 52" x 1" CONCRETE MONUMENT
 - SET 54" x 54" x 1" CONCRETE MONUMENT
 - SET 56" x 56" x 1" CONCRETE MONUMENT
 - SET 58" x 58" x 1" CONCRETE MONUMENT
 - SET 60" x 60" x 1" CONCRETE MONUMENT
 - SET 62" x 62" x 1" CONCRETE MONUMENT
 - SET 64" x 64" x 1" CONCRETE MONUMENT
 - SET 66" x 66" x 1" CONCRETE MONUMENT
 - SET 68" x 68" x 1" CONCRETE MONUMENT
 - SET 70" x 70" x 1" CONCRETE MONUMENT
 - SET 72" x 72" x 1" CONCRETE MONUMENT
 - SET 74" x 74" x 1" CONCRETE MONUMENT
 - SET 76" x 76" x 1" CONCRETE MONUMENT
 - SET 78" x 78" x 1" CONCRETE MONUMENT
 - SET 80" x 80" x 1" CONCRETE MONUMENT
 - SET 82" x 82" x 1" CONCRETE MONUMENT
 - SET 84" x 84" x 1" CONCRETE MONUMENT
 - SET 86" x 86" x 1" CONCRETE MONUMENT
 - SET 88" x 88" x 1" CONCRETE MONUMENT
 - SET 90" x 90" x 1" CONCRETE MONUMENT
 - SET 92" x 92" x 1" CONCRETE MONUMENT
 - SET 94" x 94" x 1" CONCRETE MONUMENT
 - SET 96" x 96" x 1" CONCRETE MONUMENT
 - SET 98" x 98" x 1" CONCRETE MONUMENT
 - SET 100" x 100" x 1" CONCRETE MONUMENT

LOT	AREA	PERCENTAGE	BEARING	DISTANCE	ADJACENT
C01	325.00	3.25	S 87° 18' 30" W	13.88	802' 04" 2" S 87.31 E
C02	325.00	3.25	S 87° 18' 30" W	13.88	802' 04" 2" S 87.31 E
C03	325.00	3.25	S 87° 18' 30" W	13.88	802' 04" 2" S 87.31 E
C04	325.00	3.25	S 87° 18' 30" W	13.88	802' 04" 2" S 87.31 E
C05	325.00	3.25	S 87° 18' 30" W	13.88	802' 04" 2" S 87.31 E
C06	325.00	3.25	S 87° 18' 30" W	13.88	802' 04" 2" S 87.31 E
C07	325.00	3.25	S 87° 18' 30" W	13.88	802' 04" 2" S 87.31 E
C08	325.00	3.25	S 87° 18' 30" W	13.88	802' 04" 2" S 87.31 E
C09	325.00	3.25	S 87° 18' 30" W	13.88	802' 04" 2" S 87.31 E
C10	325.00	3.25	S 87° 18' 30" W	13.88	802' 04" 2" S 87.31 E
C11	325.00	3.25	S 87° 18' 30" W	13.88	802' 04" 2" S 87.31 E
C12	325.00	3.25	S 87° 18' 30" W	13.88	802' 04" 2" S 87.31 E
C13	325.00	3.25	S 87° 18' 30" W	13.88	802' 04" 2" S 87.31 E
C14	325.00	3.25	S 87° 18' 30" W	13.88	802' 04" 2" S 87.31 E
C15	325.00	3.25	S 87° 18' 30" W	13.88	802' 04" 2" S 87.31 E
C16	325.00	3.25	S 87° 18' 30" W	13.88	802' 04" 2" S 87.31 E
C17	325.00	3.25	S 87° 18' 30" W	13.88	802' 04" 2" S 87.31 E
C18	325.00	3.25	S 87° 18' 30" W	13.88	802' 04" 2" S 87.31 E
C19	325.00	3.25	S 87° 18' 30" W	13.88	802' 04" 2" S 87.31 E
C20	325.00	3.25	S 87° 18' 30" W	13.88	802' 04" 2" S 87.31 E
C21	325.00	3.25	S 87° 18' 30" W	13.88	802' 04" 2" S 87.31 E
C22	325.00	3.25	S 87° 18' 30" W	13.88	802' 04" 2" S 87.31 E
C23	325.00	3.25	S 87° 18' 30" W	13.88	802' 04" 2" S 87.31 E
C24	325.00	3.25	S 87° 18' 30" W	13.88	802' 04" 2" S 87.31 E
C25	325.00	3.25	S 87° 18' 30" W	13.88	802' 04" 2" S 87.31 E
C26	325.00	3.25	S 87° 18' 30" W	13.88	802' 04" 2" S 87.31 E
C27	325.00	3.25	S 87° 18' 30" W	13.88	802' 04" 2" S 87.31 E
C28	325.00	3.25	S 87° 18' 30" W	13.88	802' 04" 2" S 87.31 E
C29	325.00	3.25	S 87° 18' 30" W	13.88	802' 04" 2" S 87.31 E
C30	325.00	3.25	S 87° 18' 30" W	13.88	802' 04" 2" S 87.31 E
C31	325.00	3.25	S 87° 18' 30" W	13.88	802' 04" 2" S 87.31 E
C32	325.00	3.25	S 87° 18' 30" W	13.88	802' 04" 2" S 87.31 E
C33	325.00	3.25	S 87° 18' 30" W	13.88	802' 04" 2" S 87.31 E
C34	325.00	3.25	S 87° 18' 30" W	13.88	802' 04" 2" S 87.31 E
C35	325.00	3.25	S 87° 18' 30" W	13.88	802' 04" 2" S 87.31 E
C36	325.00	3.25	S 87° 18' 30" W	13.88	802' 04" 2" S 87.31 E
C37	325.00	3.25	S 87° 18' 30" W	13.88	802' 04" 2" S 87.31 E
C38	325.00	3.25	S 87° 18' 30" W	13.88	802' 04" 2" S 87.31 E
C39	325.00	3.25	S 87° 18' 30" W	13.88	802' 04" 2" S 87.31 E
C40	325.00	3.25	S 87° 18' 30" W	13.88	802' 04" 2" S 87.31 E
C41	325.00	3.25	S 87° 18' 30" W	13.88	802' 04" 2" S 87.31 E
C42	325.00	3.25	S 87° 18' 30" W	13.88	802' 04" 2" S 87.31 E
C43	325.00	3.25	S 87° 18' 30" W	13.88	802' 04" 2" S 87.31 E
C44	325.00	3.25	S 87° 18' 30" W	13.88	802' 04" 2" S 87.31 E
C45	325.00	3.25	S 87° 18' 30" W	13.88	802' 04" 2" S 87.31 E
C46	325.00	3.25	S 87° 18' 30" W	13.88	802' 04" 2" S 87.31 E
C47	325.00	3.25	S 87° 18' 30" W	13.88	802' 04" 2" S 87.31 E
C48	325.00	3.25	S 87° 18' 30" W	13.88	802' 04" 2" S 87.31 E
C49	325.00	3.25	S 87° 18' 30" W	13.88	802' 04" 2" S 87.31 E
C50	325.00	3.25	S 87° 18' 30" W	13.88	802' 04" 2" S 87.31 E
C51	325.00	3.25	S 87° 18' 30" W	13.88	802' 04" 2" S 87.31 E
C52	325.00	3.25	S 87° 18' 30" W	13.88	802' 04" 2" S 87.31 E
C53	325.00	3.25	S 87° 18' 30" W	13.88	802' 04" 2" S 87.31 E
C54	325.00	3.25	S 87° 18' 30" W	13.88	802' 04" 2" S 87.31 E
C55	325.00	3.25	S 87° 18' 30" W	13.88	802' 04" 2" S 87.31 E
C56	325.00	3.25	S 87° 18' 30" W	13.88	802' 04" 2" S 87.31 E
C57	325.00	3.25	S 87° 18' 30" W	13.88	802' 04" 2" S 87.31 E
C58	325.00	3.25	S 87° 18' 30" W	13.88	802' 04" 2" S 87.31 E
C59	325.00	3.25	S 87° 18' 30" W	13.88	802' 04" 2" S 87.31 E
C60	325.00	3.25	S 87° 18' 30" W	13.88	802' 04" 2" S 87.31 E
C61	325.00	3.25	S 87° 18' 30" W	13.88	802' 04" 2" S 87.31 E
C62	325.00	3.25	S 87° 18' 30" W	13.88	802' 04" 2" S 87.31 E
C63	325.00	3.25	S 87° 18' 30" W	13.88	802' 04" 2" S 87.31 E
C64	325.00	3.25	S 87° 18' 30" W	13.88	802' 04" 2" S 87.31 E
C65	325.00	3.25	S 87° 18' 30" W	13.88	802' 04" 2" S 87.31 E
C66	325.00	3.25	S 87° 18' 30" W	13.88	802' 04" 2" S 87.31 E
C67	325.00	3.25	S 87° 18' 30" W	13.88	802' 04" 2" S 87.31 E
C68	325.00	3.25	S 87° 18' 30" W	13.88	802' 04" 2" S 87.31 E
C69	325.00	3.25	S 87° 18' 30" W	13.88	802' 04" 2" S 87.31 E
C70	325.00	3.25	S 87° 18' 30" W	13.88	802' 04" 2" S 87.31 E
C71	325.00	3.25	S 87° 18' 30" W	13.88	802' 04" 2" S 87.31 E
C72	325.00	3.25	S 87° 18' 30" W	13.88	802' 04" 2" S 87.31 E
C73	325.00	3.25	S 87° 18' 30" W	13.88	802' 04" 2" S 87.31 E
C74	325.00	3.25	S 87° 18' 30" W	13.88	802' 04" 2" S 87.31 E
C75	325.00	3.25	S 87° 18' 30" W	13.88	802' 04" 2" S 87.31 E
C76	325.00	3.25	S 87° 18' 30" W	13.88	802' 04" 2" S 87.31 E
C77	325.00	3.25	S 87° 18' 30" W	13.88	802' 04" 2" S 87.31 E
C78	325.00	3.25	S 87° 18' 30" W	13.88	802' 04" 2" S 87.31 E
C79	325.00	3.25	S 87° 18' 30" W	13.88	802' 04" 2" S 87.31 E
C80	325.00	3.25	S 87° 18' 30" W	13.88	802' 04" 2" S 87.31 E
C81	325.00	3.25	S 87° 18' 30" W	13.88	802' 04" 2" S 87.31 E
C82	325.00	3.25	S 87° 18' 30" W	13.88	802' 04" 2" S 87.31 E
C83	325.00	3.25	S 87° 18' 30" W	13.88	802' 04" 2" S 87.31 E
C84	325.00	3.25	S 87° 18' 30" W	13.88	802' 04" 2" S 87.31 E
C85	325.00	3.25	S 87° 18' 30" W	13.88	802' 04" 2" S 87.31 E
C86	325.00	3.25	S 87° 18' 30" W	13.88	802' 04" 2" S 87.31 E
C87	325.00	3.25	S 87° 18' 30" W	13.88	802' 04" 2" S 87.31 E
C88	325.00	3.25	S 87° 18' 30" W	13.88	802' 04" 2" S 87.31 E
C89	325.00	3.25	S 87° 18' 30" W	13.88	802' 04" 2" S 87.31 E
C90	325.00	3.25	S 87° 18' 30" W	13.88	802' 04" 2" S 87.31 E
C91	325.00	3.25	S 87° 18' 30" W	13.88	802' 04" 2" S 87.31 E
C92	325.00	3.25	S 87° 18' 30" W	13.88	802' 04" 2" S 87.31 E
C93	325.00	3.25	S 87° 18' 30" W	13.88	802' 04" 2" S 87.31 E
C94	325.00	3.25	S 87° 18' 30" W	13.88	802' 04" 2" S 87.31 E
C95	325.00	3.25	S 87° 18' 30" W	13.88	802' 04" 2" S 87.31 E
C96	325.00	3.25	S 87° 18' 30" W	13.88	802' 04" 2" S 87.31 E
C97	325.00	3.25	S 87° 18' 30" W	13.88	802' 04" 2" S 87.31 E
C98	325.00	3.25	S 87° 18' 30" W	13.88	802' 04" 2" S 87.31 E
C99	325.00	3.25	S 87° 18' 30" W	13.88	802' 04" 2" S 87.31 E
C00	325.00	3.25	S 87° 18' 30" W	13.88	802' 04" 2" S 87.31 E

PREPARED BY:
JAMES T. RODDENBERRY & ASSOCIATES, INC.
 Professional Surveyors and Mappers

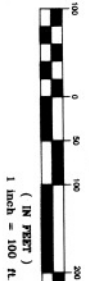
P.O. Box 100 • 125 Sheldon Street • Sepecherra, FL 32586-0100 • (850) 862-2538
 DATE: 09/20/05 DRAWN BY: MMD
 FILE: 050428P.DWG SEC: 9 TIN: RW JOB NUMBER: 05-042

NOTICE:
 This plat, or recorded in its graphic form, is the official depiction of the survey as shown on the plat and is to be used as the basis for all future surveys. No other plat or survey is to be relied upon for any additional restrictions that are not recorded on this plat that may be found in the public records of this county.

PLAT BOOK 16 PAGE 79

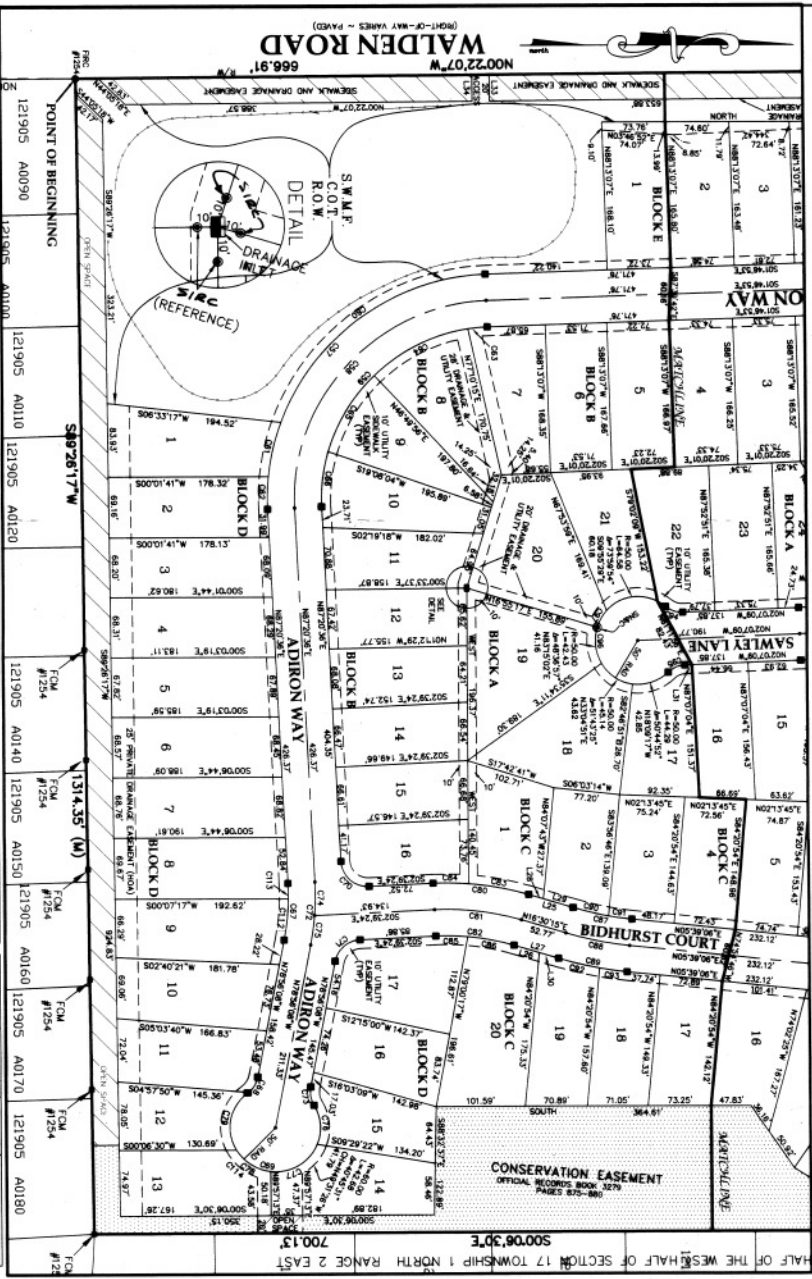
SHEET 2 OF 3

GRAPHIC SCALE



A SUBDIVISION LYING WITH SECTION 17, TOWNSHIP 1 NORTH, RANGE 2 EAST, LEON COUNTY, FLORIDA AND LYING WITHIN THE CITY LIMITS OF TALLAHASSEE, FLORIDA

ADIRON WOODS



LEGEND

- 1" = 5/8" NE-1/4 1/160
- 1" = 3/4" NE-1/4 1/160
- 1" = 1/2" NE-1/4 1/160
- 1" = 1/4" NE-1/4 1/160
- ▲ 1" = 1/8" NE-1/4 1/160
- 1" = 1/32" NE-1/4 1/160
- 1" = 1/64" NE-1/4 1/160
- 1" = 1/128" NE-1/4 1/160
- 1" = 1/256" NE-1/4 1/160
- ▲ 1" = 1/512" NE-1/4 1/160
- 1" = 1/1024" NE-1/4 1/160
- 1" = 1/2048" NE-1/4 1/160
- 1" = 1/4096" NE-1/4 1/160
- 1" = 1/8192" NE-1/4 1/160
- ▲ 1" = 1/16384" NE-1/4 1/160

● 1" = 1/2" NE-1/4 1/160

○ 1" = 1/4" NE-1/4 1/160

□ 1" = 1/8" NE-1/4 1/160

■ 1" = 1/16" NE-1/4 1/160

▲ 1" = 1/32" NE-1/4 1/160

● 1" = 1/64" NE-1/4 1/160

○ 1" = 1/128" NE-1/4 1/160

□ 1" = 1/256" NE-1/4 1/160

■ 1" = 1/512" NE-1/4 1/160

▲ 1" = 1/1024" NE-1/4 1/160

● 1" = 1/2048" NE-1/4 1/160

○ 1" = 1/4096" NE-1/4 1/160

□ 1" = 1/8192" NE-1/4 1/160

■ 1" = 1/16384" NE-1/4 1/160

▲ 1" = 1/32768" NE-1/4 1/160

SURVEYOR'S CERTIFICATION:

I hereby certify that this survey was made under my personal direction and supervision, that the instruments used were true and correct, and that the measurements were taken in accordance with the laws of the State of Florida, and that the boundaries and contents of the land shown on this plat are true and correct, and that the survey data and monuments are reliable and permanent.

[Signature]

SURVEYOR'S SEAL

CASE	MARKS	BEARING	DISTANCE	AREA	REMARKS
C01	58.00	0°00'00"	3.50	0.000	...
C02	58.00	90°00'00"	3.50	0.000	...
C03	58.00	180°00'00"	3.50	0.000	...
C04	58.00	270°00'00"	3.50	0.000	...
C05	58.00	360°00'00"	3.50	0.000	...
C06	58.00	0°00'00"	3.50	0.000	...
C07	58.00	90°00'00"	3.50	0.000	...
C08	58.00	180°00'00"	3.50	0.000	...
C09	58.00	270°00'00"	3.50	0.000	...
C10	58.00	360°00'00"	3.50	0.000	...
C11	58.00	0°00'00"	3.50	0.000	...
C12	58.00	90°00'00"	3.50	0.000	...
C13	58.00	180°00'00"	3.50	0.000	...
C14	58.00	270°00'00"	3.50	0.000	...
C15	58.00	360°00'00"	3.50	0.000	...
C16	58.00	0°00'00"	3.50	0.000	...
C17	58.00	90°00'00"	3.50	0.000	...
C18	58.00	180°00'00"	3.50	0.000	...
C19	58.00	270°00'00"	3.50	0.000	...
C20	58.00	360°00'00"	3.50	0.000	...
C21	58.00	0°00'00"	3.50	0.000	...
C22	58.00	90°00'00"	3.50	0.000	...
C23	58.00	180°00'00"	3.50	0.000	...
C24	58.00	270°00'00"	3.50	0.000	...
C25	58.00	360°00'00"	3.50	0.000	...
C26	58.00	0°00'00"	3.50	0.000	...
C27	58.00	90°00'00"	3.50	0.000	...
C28	58.00	180°00'00"	3.50	0.000	...
C29	58.00	270°00'00"	3.50	0.000	...
C30	58.00	360°00'00"	3.50	0.000	...

NOTICE:

The above plat was prepared by the graphic form in the office description of the land contained herein and will in no circumstances be supported in any other manner, written or oral, except as herein provided. There may be obtained from the surveyor a copy of the original plat, which may be obtained from the surveyor upon payment of the fee therefor. The original plat is not to be used as a basis for any other plat.

PREPARED BY:
PHILIP RAYMOND RAYMOND, SURVEYOR & ASSOCIATES, INC.
Professional Surveyors and Mappers
P.O. Box 100 • 125 Sheldon Street • Seopony, FL 32358-0100 • (850) 962-2538
LB NO. 7160

DATE	DRAWN BY	N.B.	P.S.	COUNTY	JOB NUMBER
09/20/05	MMD			LEON	05-042
	SEC. 9	TIN	RW		



UNOFFICIAL DOCUMENT