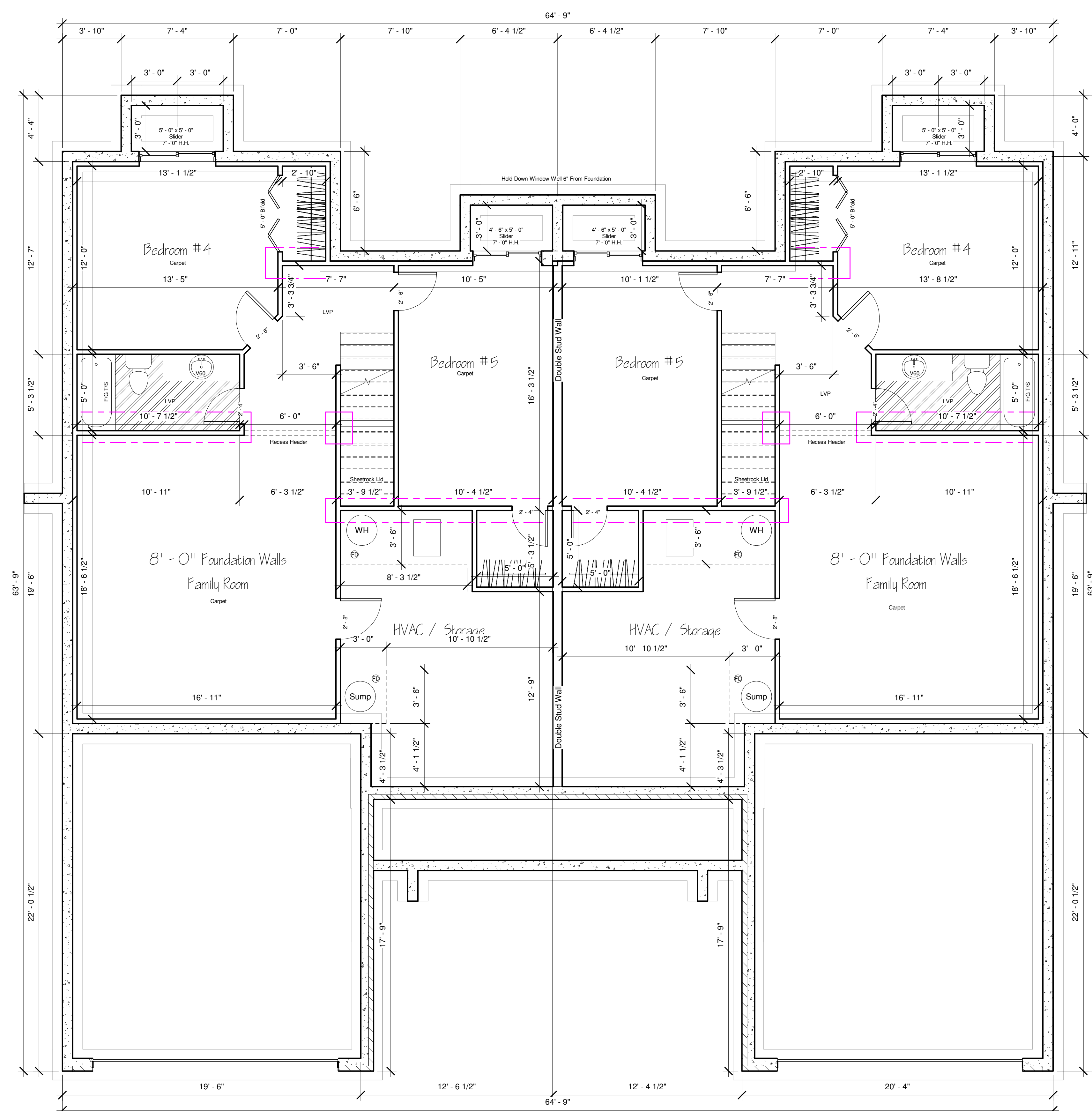




www.craigsharphomes.com

All plans are copyrighted and may not be reproduced either in whole or in part, in any form, without the written permission of Craig Sharp Homes

**FRAMING NOTE:**  
Permanent posts for decks to be set by Framer. Use Permacast columns when necessary.



House:	2378
Garage:	882
Front Porch:	124
Back Porch:	310
Finished Basement:	1788

Chuck  
Monarch 6th

**Foundation**

Date	5/29/24
Drawn by	BMS
Checked by	CAS

**A101**

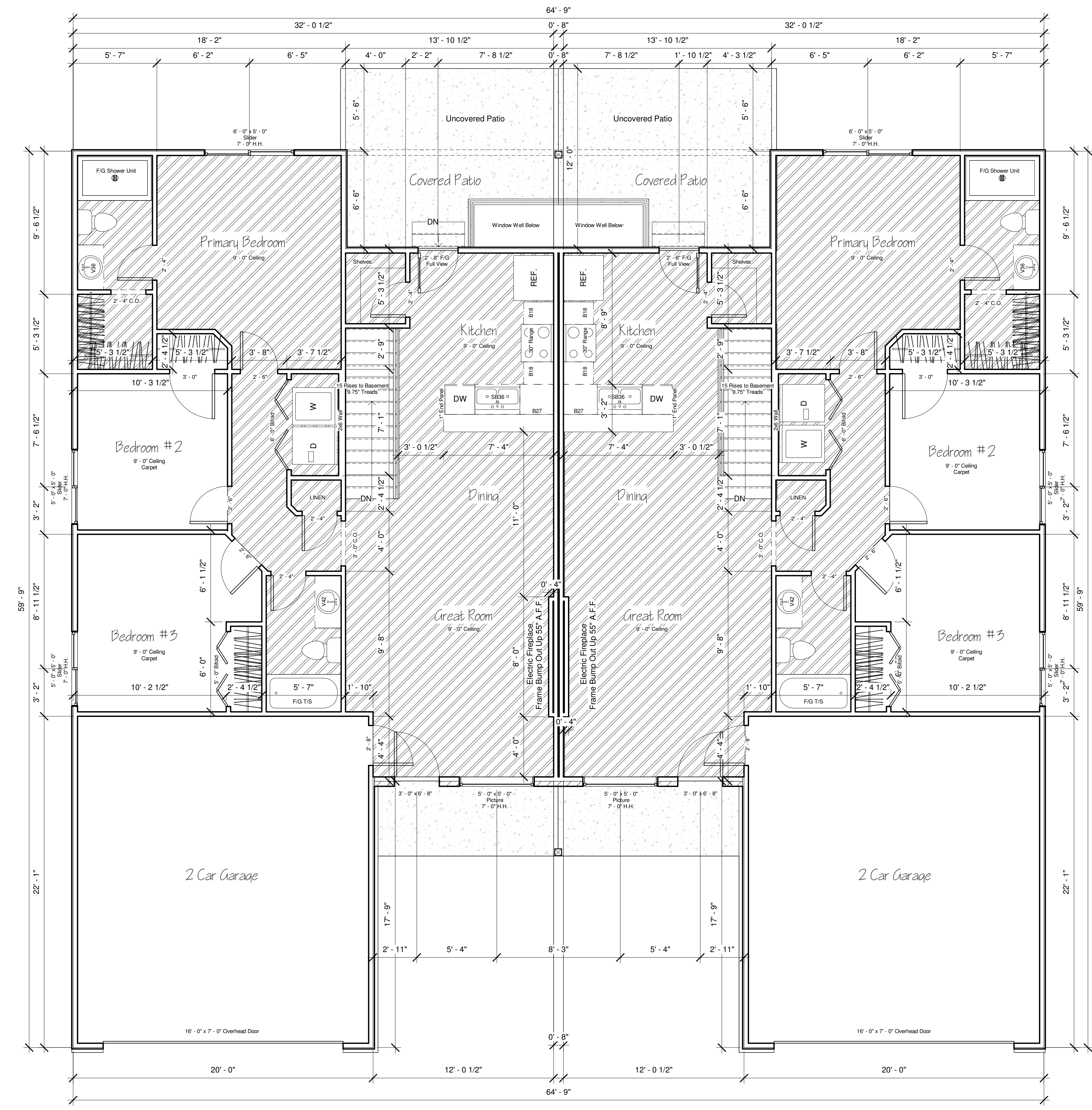
Scale	1/4" = 1'-0"
-------	--------------



www.craigsharphomes.com

All plans are copyrighted and may not be reproduced either in whole or in part, in any form, without the written permission of Craig Sharp Homes

**FRAMING NOTE:**  
Permanent posts for decks to be set by Framer. Use Permacast columns when necessary.



House:	2378
Garage:	882
Front Porch:	124
Back Porch:	310
Finished Basement:	1788

**Chuck  
Monarch 6th**

**Floor Plan**  
Date: 5/29/24  
Drawn by: BMS  
Checked by: CAS

**A102**  
Scale: 1/4" = 1'-0"

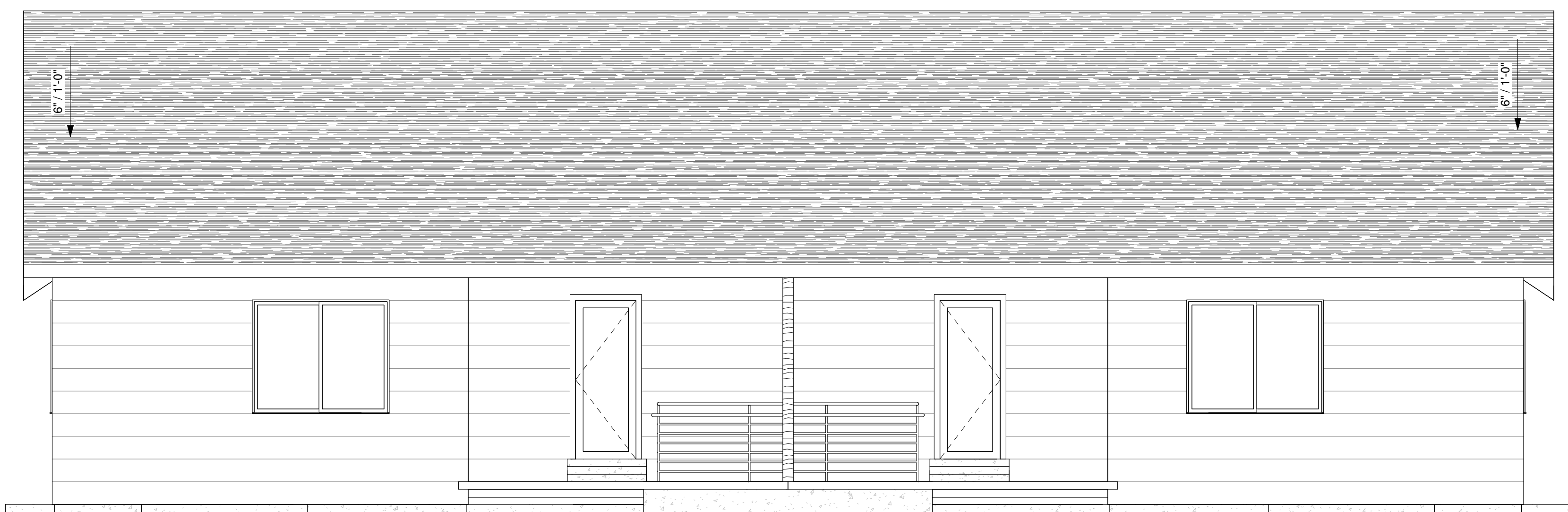
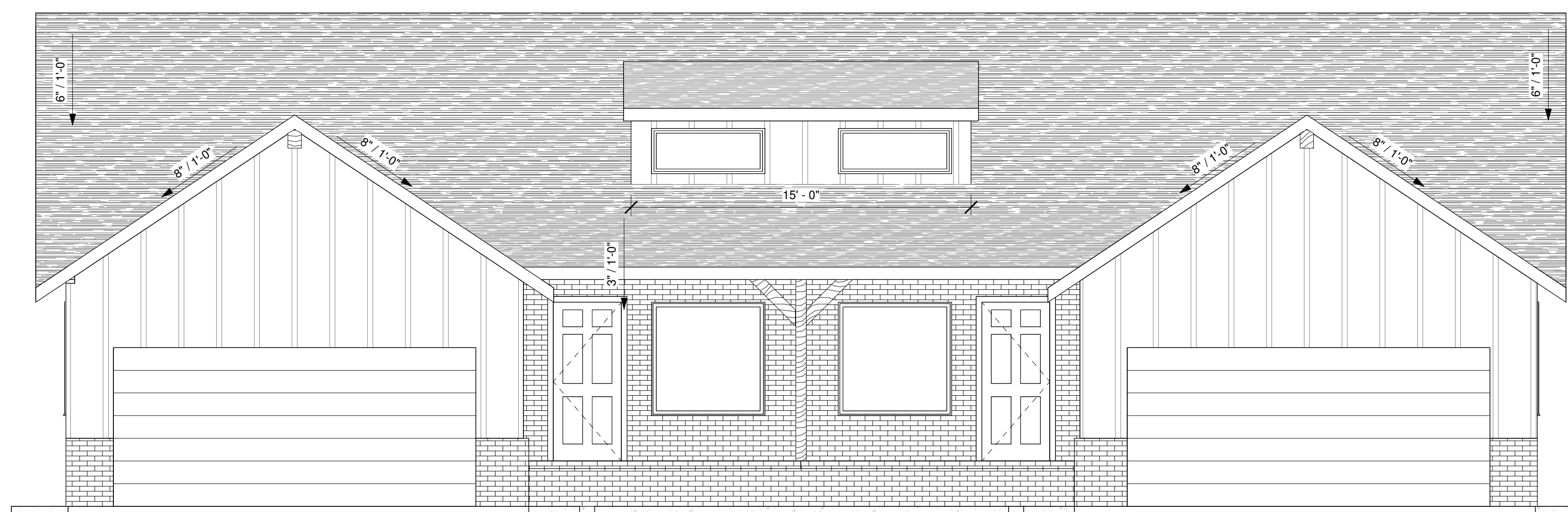


www.craigsharphomes.com

All plans are copyrighted and may not be reproduced either in whole or in part, in any form, without the written permission of Craig Sharp Homes

**FRAMING NOTE:**  
Permanent posts for decks to be set by Framer. Use Permacast columns when necessary.

White Windows Throughout  
Craftsman Fiberglass Front Door  
Black Shingle Roof



House:	2378
Garage:	882
Front Porch:	124
Back Porch:	310
Finished Basement:	1788

**Chuck  
Monarch 6th**

<b>Front / Back Elevation</b>	
Date	5/29/24
Drawn by	BMS
Checked by	CAS

**A103**

Scale 1/4" = 1'-0"

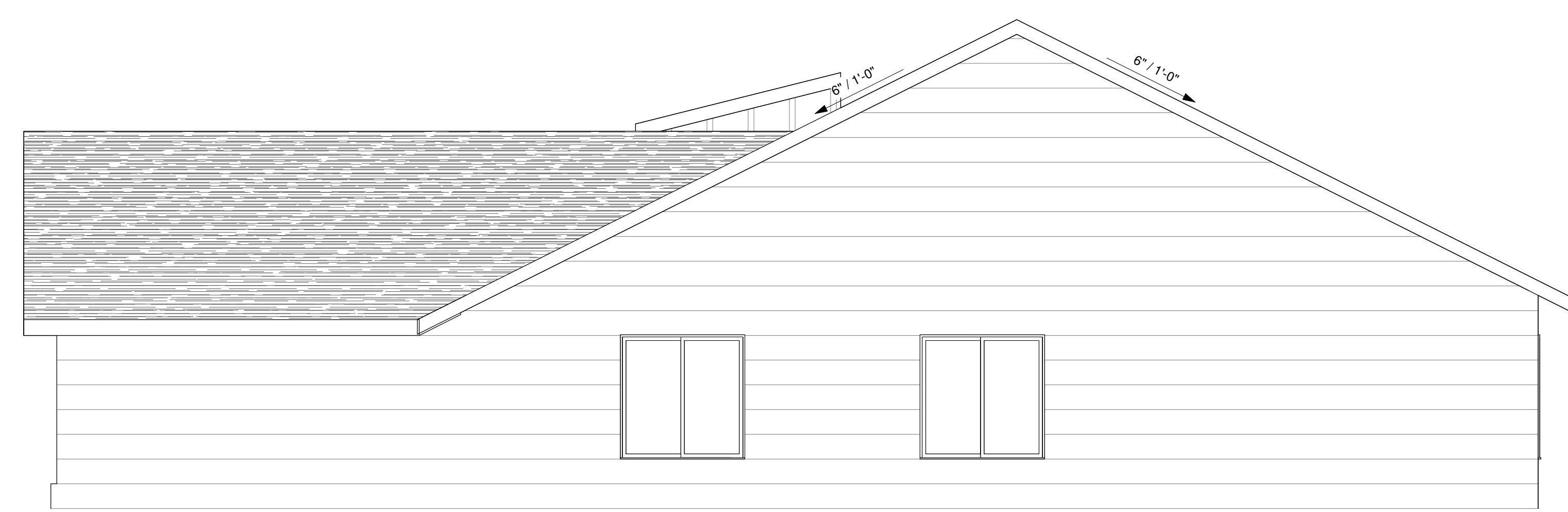




www.craigsharphomes.com

All plans are copyrighted and may not be reproduced either in whole or in part, in any form, without the written permission of Craig Sharp Homes

**FRAMING NOTE:**  
Permanent posts for decks to be set by Framer. Use Permacast columns when necessary.



① Left  
1/4" = 1'-0"



② Right  
1/4" = 1'-0"

House:	2378
Garage:	882
Front Porch:	124
Back Porch:	310
Finished Basement:	1788

**Chuck  
Monarch 6th**

**Left / Right Elevations**

Date	5/29/24
Drawn by	BMS
Checked by	CAS

**A104**

Scale	1/4" = 1'-0"
-------	--------------