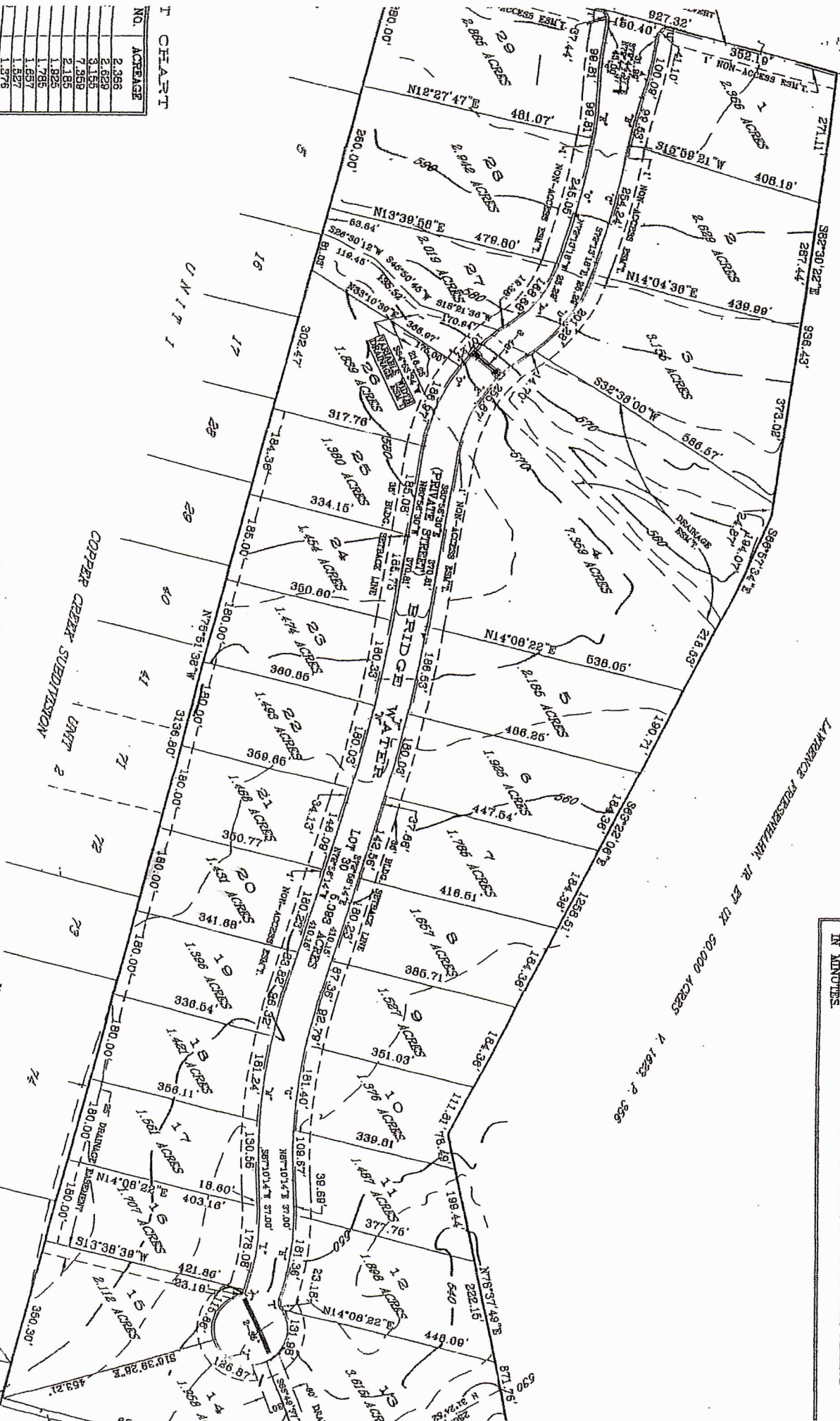


**T CHART**

NO.	ACREAGE
1	2.366
2	2.629
3	3.155
4	7.959
5	2.185
6	1.825
7	1.785
8	1.657
9	1.627
10	1.487
11	1.898
12	3.615
13	2.958
14	2.112
15	1.707
16	1.561
17	1.421
18	1.396
19	1.431
20	1.456
21	1.488

**G.V.E.C. METER TYPICAL**  
 MADE TO SCALE

NOTE: EVERY METER TYPICAL SHALL HAVE ACCESS TO THE WATER MAIN AND TO THE WATER TREATMENT PLANT FROM THE METER. THE METER SHALL BE INSTALLED IN A CONCRETE ENCLOSURE. THE METER SHALL BE INSTALLED IN A CONCRETE ENCLOSURE. THE METER SHALL BE INSTALLED IN A CONCRETE ENCLOSURE.



THIS PLAT IS UNRECORDED IN WILSON COUNTY, TEXAS A ONE-FOURTH-NON-AL-  
 EASEMENT, AROUND THE RIGHT OF WAY OF ANY ROAD ON THIS PLAT THAT  
 IS NOT DEDICATED TO WILSON COUNTY. THE NON-ACCESS EASEMENT MAY NOT  
 BE USED FOR THE PURPOSE OF CONSTRUCTING ANY BUILDING.  
 WHEN THE ROADS AND DRAINAGE STRUCTURES SHOW ON THIS PLAT HAVE  
 BEEN CONSTRUCTED IN ACCORDANCE WITH THE WILSON COUNTY  
 SUBDIVISION REGULATIONS, THE WILSON COUNTY COMMISSIONERS COURT  
 SHALL RELEASE THE NON-ACCESS EASEMENT, AND NOTE SUCH RELEASE  
 IN MINUTES.