

ENVISION 2030 PROJECT UPDATES

July 2025

Phases 1-5 will be complete for the start of the 2025 school year. These areas include a new three-classroom addition, renovated existing classrooms, turf courtyard, renovated media center, and wellness offices. New instructional furniture is slated to be installed in completed areas later this month. The remaining three phases of work will update the two-story classroom wing, related arts rooms, and the cafeteria. Work is scheduled to be complete in August 2026.

PROJECT HIGHLIGHT: L. C. SCHMITT ELEMENTARY SCHOOL



Media Center receiving new paneling and glazing



New addition and turf courtyard

R. L. JOHNSON EARLY EDUCATION

Work is almost complete at Johnson. Six new classrooms and several support spaces will be opening in August 2025 to welcome the district's youngest learners. The classrooms match what was done in the first phase of work and have all new casework, finishes, and furniture. Students in these rooms will also have access to the new playground, completed earlier this year.



Toddler classroom nearing completion

L. C. SCHMITT ELEMENTARY

The new addition at Schmitt – designed to bridge the gap between the original Harry Weese building and the 1990s addition – features three classrooms, each with an individual restroom, ample daylight, and access to both learning commons and an outdoor courtyard. All classrooms also have new instructional technology and upgraded mechanical systems.



Classroom in recently completed addition

MAPLE GROVE ELEMENTARY

The district's newest building is scheduled to break ground this fall! Maple Grove is designed to serve up to 600 students and their families starting in 2027-2028 school year. The building embraces its idyllic natural setting with neutral colors and finishes. The school will have many large windows and clerestories to bring in daylight and provide views to the woods on the site.



Rendering of new cafeteria

L. FRANCES SMITH ELEMENTARY

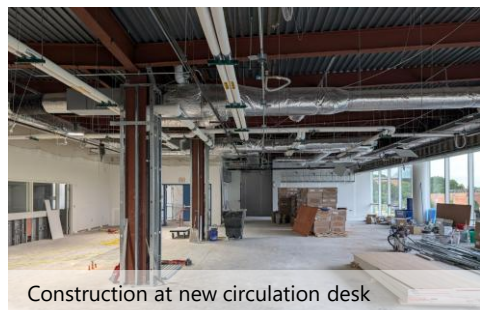
As summer work in the cafeteria and pre-K classroom concludes, work on Phase 1 classroom renovations continues. Scheduled to be complete by Fall Break 2025, the updated classrooms will each have an individual restroom, access to a small-group room and learning commons, and visibility to the corridor (shown below). The remaining seven phases of work are scheduled to conclude in August 2027.



Phase 1 classroom renovation

CENTRAL MIDDLE

A renovated media center, new wellness offices, and a new maker space are shaping up and will be operational in October 2025! All spaces have been framed out, and drywall installation is ongoing. Casework and finishes will follow, creating a welcoming, updated set of spaces for student use. Several vibrant pieces of new furniture in the school's colors will accent an otherwise neutral color palette and will serve as the finishing pieces of the design.



Construction at new circulation desk

NORTHSIDE MIDDLE

If you've driven past the Northside campus recently, you may have noticed a gaping hole in the side of the building! The old pool wall has been demolished and is serving as the main path for debris leaving the building. The first phases of work focus on renovation of all classrooms on the north side of the building and the room that will eventually become a large group space, replacing the old pool. The project is scheduled to be complete in summer 2027.



North classrooms w/interior walls demolished

COLUMBUS EAST HIGH

Demolition of the existing C4 Health Sciences classrooms commenced at the end of the Spring 2025 semester. In addition to the reconfigured labs and classrooms, new dental chairs, long-term hospital beds, and other real-world medical equipment is being integrated into the space to give students hands-on training. Renovations will continue into the 2025-2026 school year.

MT. HEALTHY ELEMENTARY

Schematic design is underway on Mt. Healthy! Initial design concepts addressing safety, circulation, and acoustics are being developed for review by the teacher-led design team. Design is scheduled to continue through the end of the year, and construction – led by construction manager, CORE – is slated to begin in early 2026.

COLUMBUS NORTH HIGH

A second dedicated biomedical sciences lab is opening this fall at Columbus North High School. The lab combines an existing C4 classroom with a room previously used for storage, allowing for dedicated areas within the space for both lab and lecture content.