

# Skewers

## Chess Tactics for INTERMEDIATE

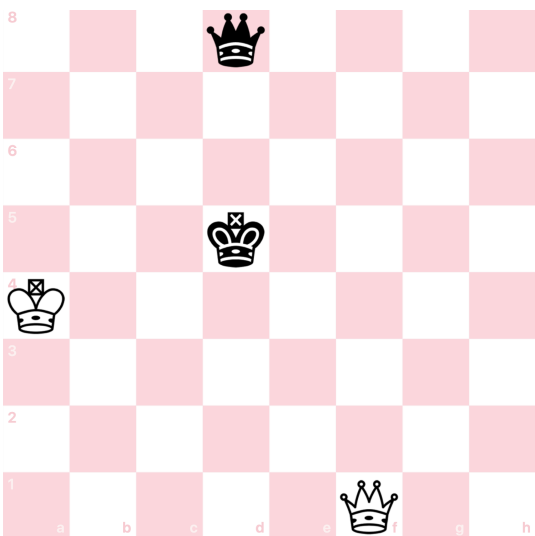


Name \_\_\_\_\_ Grade \_\_\_\_\_ Score \_\_\_\_\_

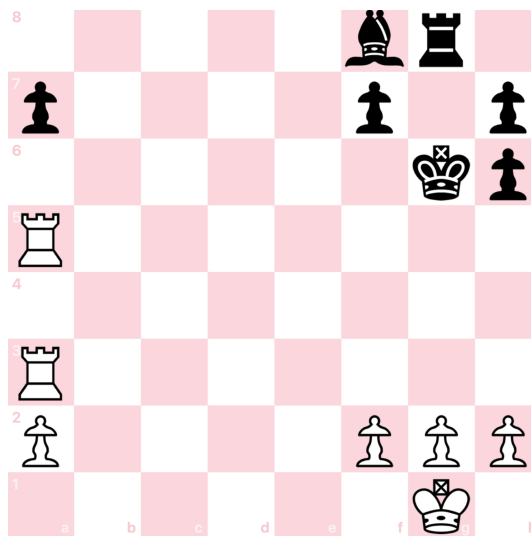
A skewer is a chess tactic where there is attack upon two pieces in a line. The more valuable piece is under direct attack and when it moves away the other piece behind it is captured.  
A skewer is the OPPOSITE of a pin where the less valuable piece is first in the line.

Using chess notation make the best move for WHITE using a SKEWER!

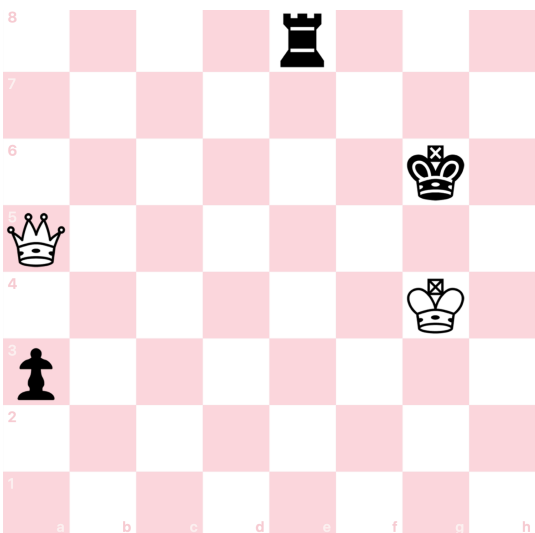
PUZZLE #1



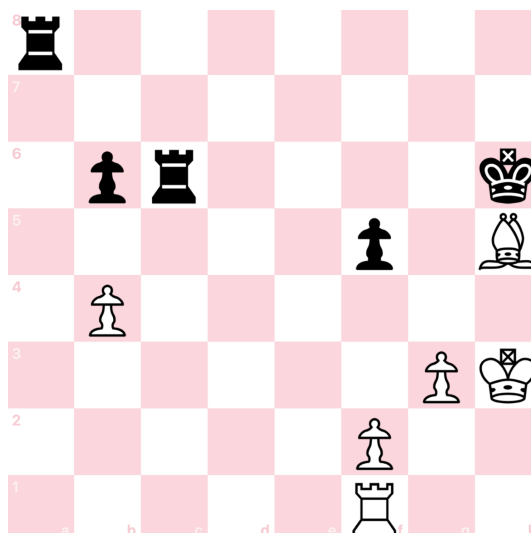
PUZZLE #2



PUZZLE #3

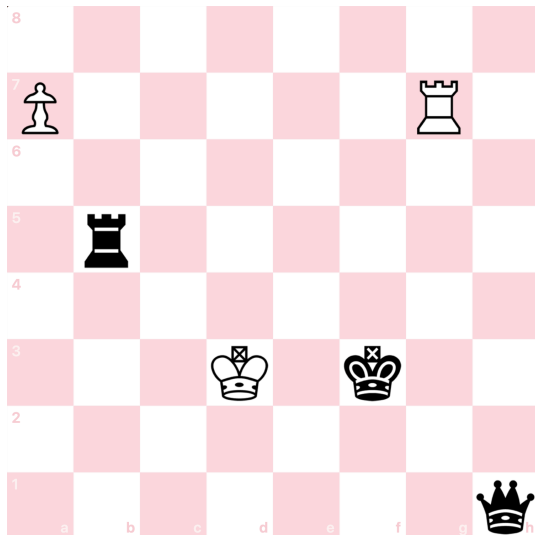


PUZZLE #4

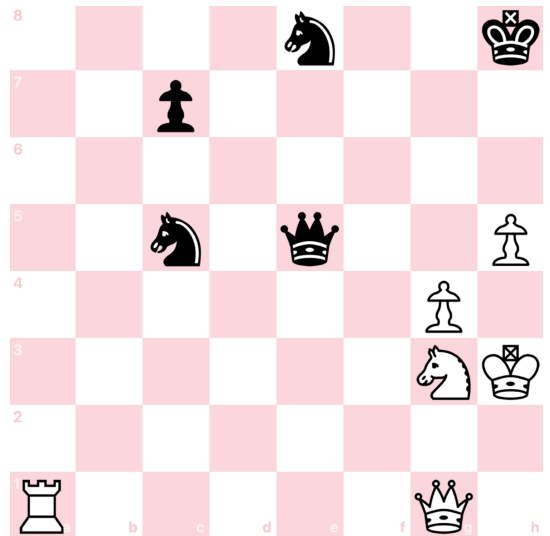


Using chess notation write the best move for white using a skewer.

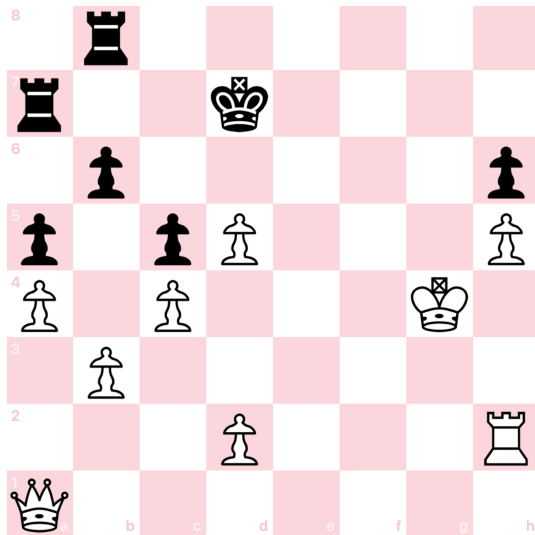
PUZZLE #5



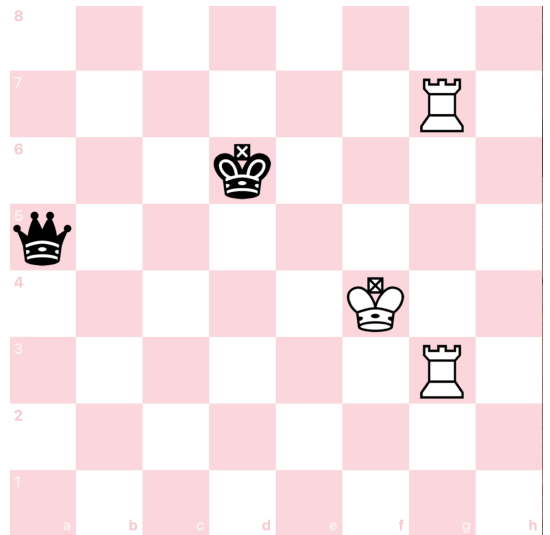

PUZZLE #6




PUZZLE #7




PUZZLE #8




**GRANDMASTER TIP:** Did you know there are short range pieces and long range pieces in chess?  
 Only the *LONG RANGE* pieces can execute a skewer!

*Short range pieces:* Pawn, Knight and King  
*Long range pieces:* Bishop, Rook and Queen