

Discovery!

Chess Tactics for INTERMEDIATE

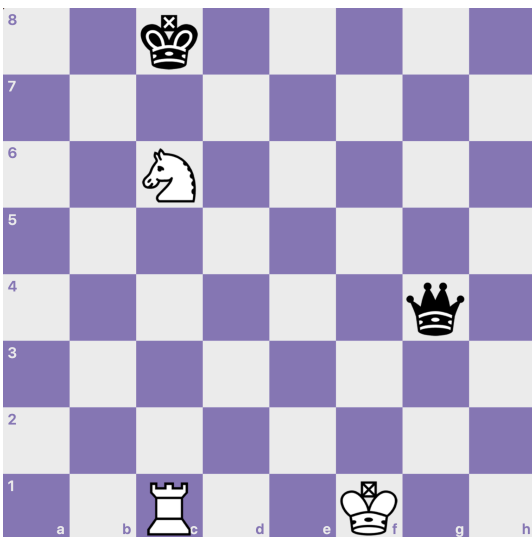


Name _____ Grade _____ Score _____

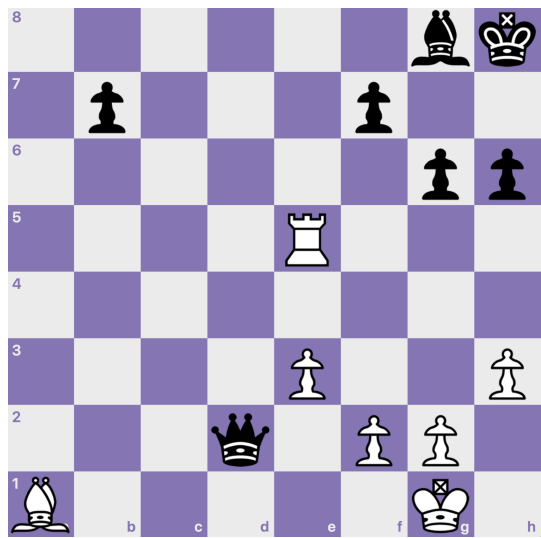
In chess, a discovery is an attack revealed when one piece moves out of the way of an attacking piece. Discovered attacks can be extremely powerful, as the piece that is moved can make its own attack at the same time as the piece uncovered.

Using chess notation make the best move for WHITE using a DISCOVERY.

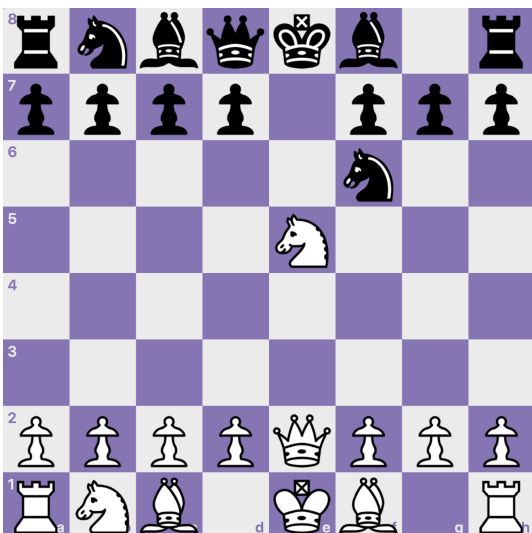
PUZZLE #1



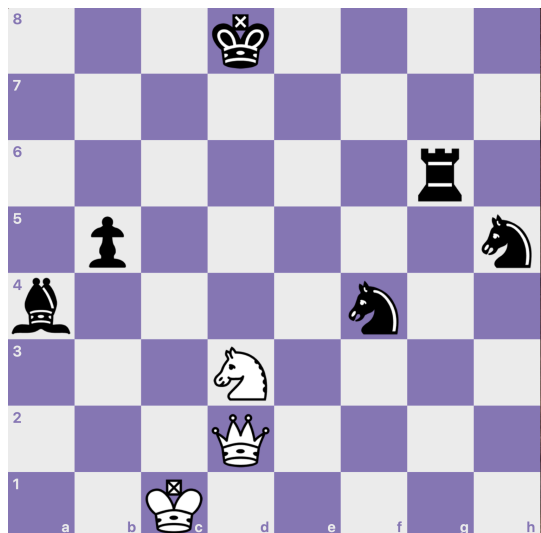
PUZZLE #2



PUZZLE #3

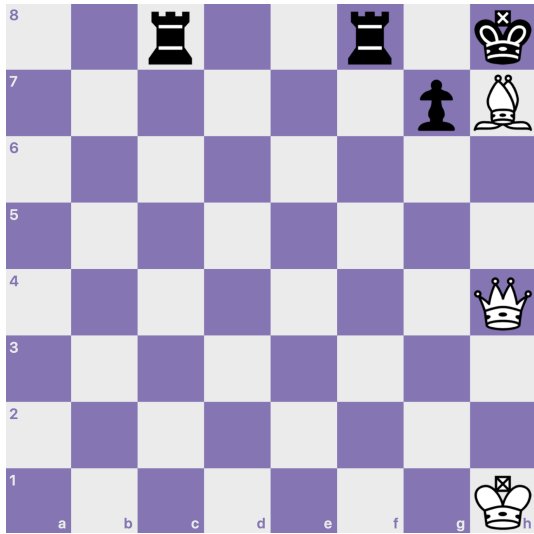


PUZZLE #4

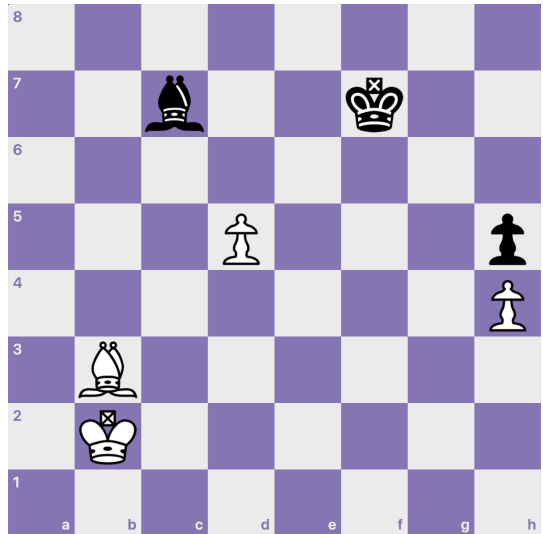


Using chess notation write the best move for white using a discovery.

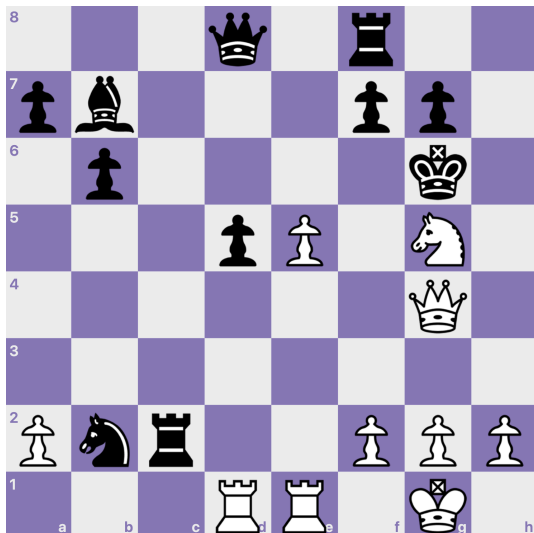
PUZZLE #5



PUZZLE #6



PUZZLE #7



PUZZLE #8



GRANDMASTER TIP: Did you know there are three different kinds of discoveries?
Discovered Check: When the discovery reveals an attack on the King
Discovered Attack: Another name for a discovery, but this is the normal type of discovery
Double Check: When both the piece revealed and the piece that moves check the King at the same time!