



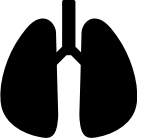


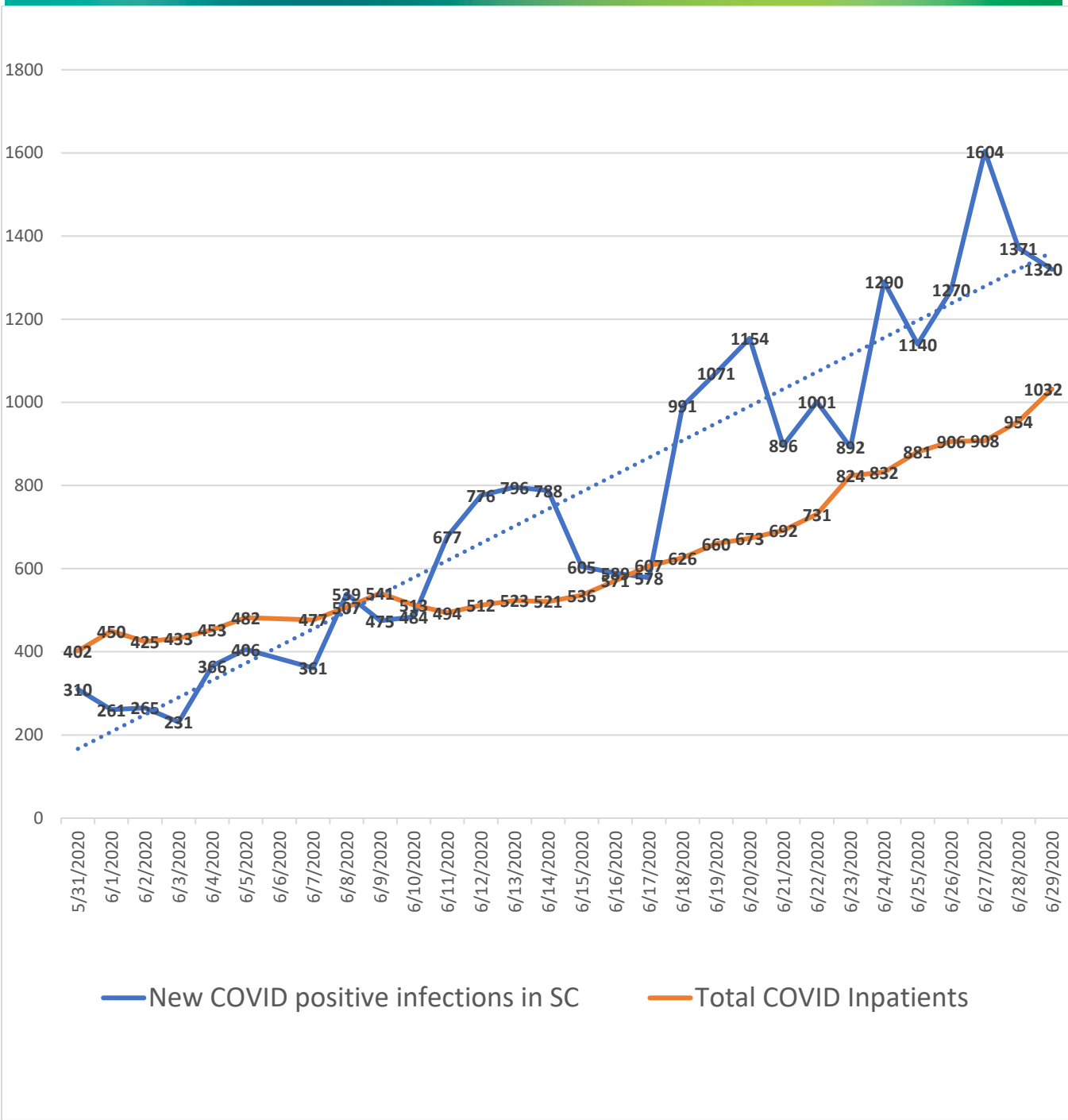
COVID-19 DAILY DATA INPUTS: 6/29/2020

	6/28/2020	6/29/2020	
	New COVID Deaths:	5	5
	Total COVID Deaths:	712	717
	New COVID Positive Infections:	1,371	1,320
	% Positive Cases Among Individuals Tested:	20.2%	15.5%
	Total COVID Positive Infections:	33,226	34,546
	Total COVID Patients Ventilated:	106	117
	% of COVID Patients Ventilated:	11.2%	11.4%
	% Acute Inpatients that are COVID Positive:	13.5%	14.9%
	Total Acute Care COVID Inpatients:	949	1,027
	Total COVID Inpatients:	954	1,032
	Available Acute Care Staffed Beds:	2,847	2,991
	Acute Care Staffed Beds Utilization:	71.2%	69.7%
	Total Available Inpatient Beds:	3,025	3,169
	Total Inpatient Utilization:	71.2%	69.8%
	Total Available ICU/Critical Care Beds:	444	461
	Total ICU/Critical Care Bed Utilization:	70.0%	68.7%
	Available Acute Care Vents:	1,520	1,513
	Acute Care Vent Utilization:	21.0%	21.3%
	Total Available Vents:	1,563	1,558
	Total Vent Utilization:	22.2%	22.4%

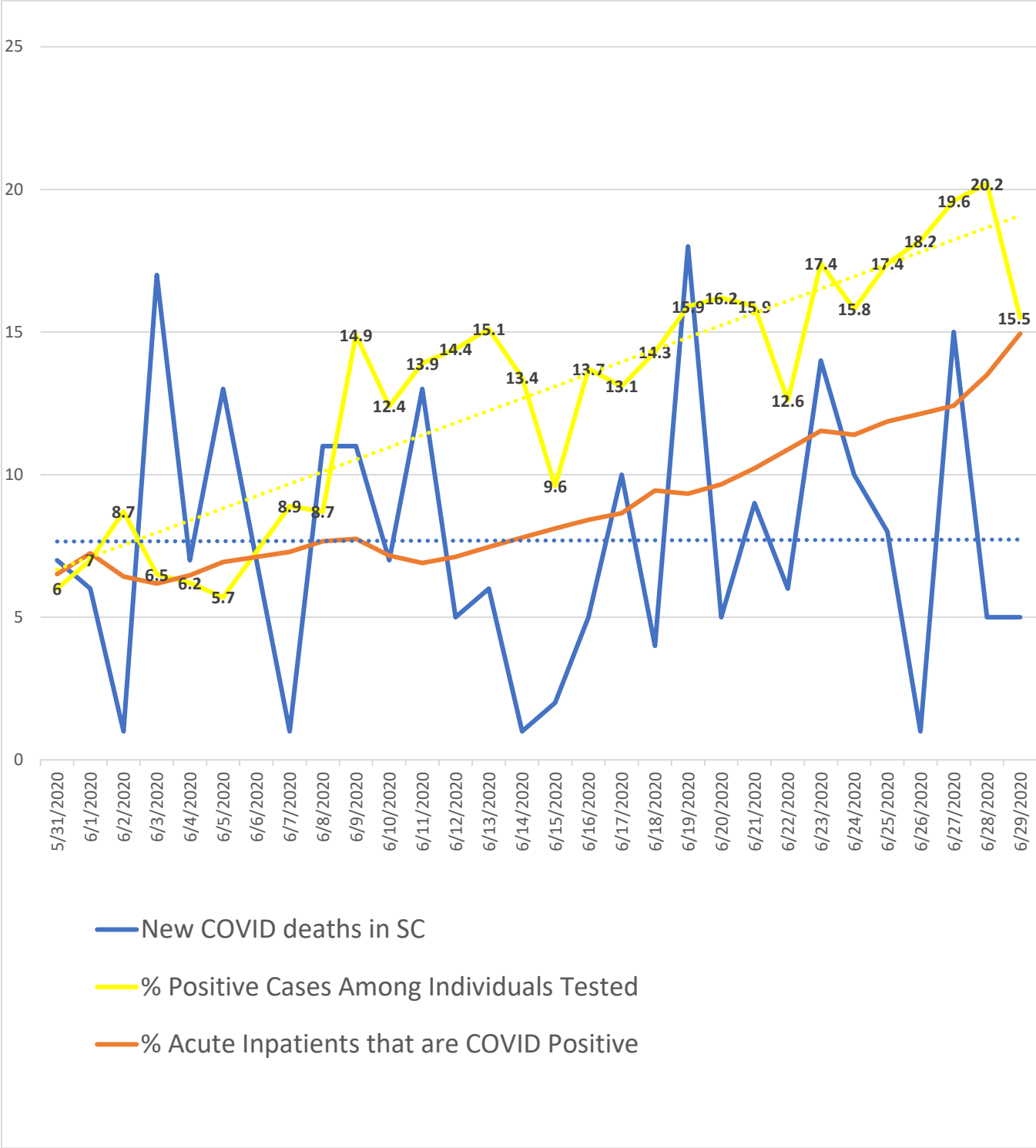
THIS REPORT NOW INCLUDES DATA FROM LONG-TERM ACUTE CARE FACILITIES.

ALL BEDS SHOWN IN THIS REPORT ARE INPATIENT BEDS.

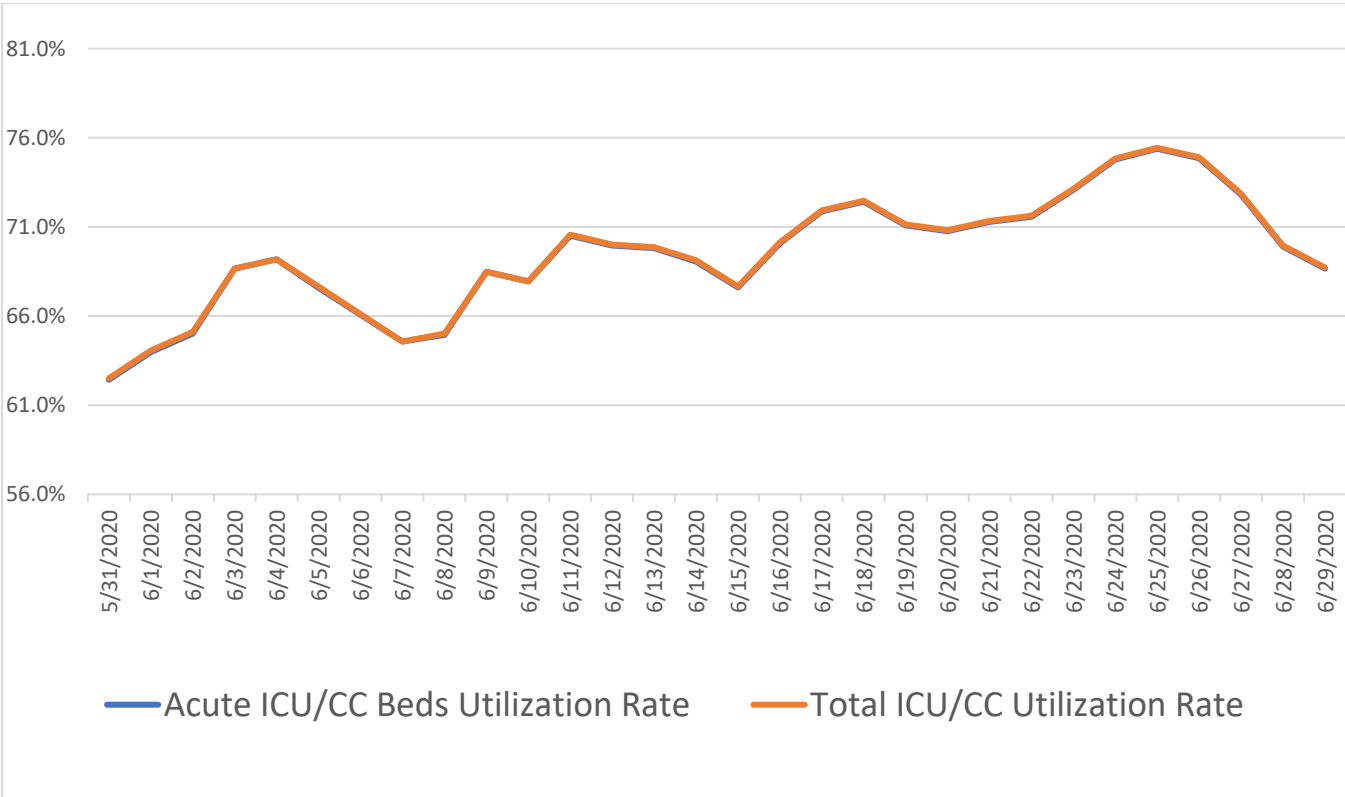
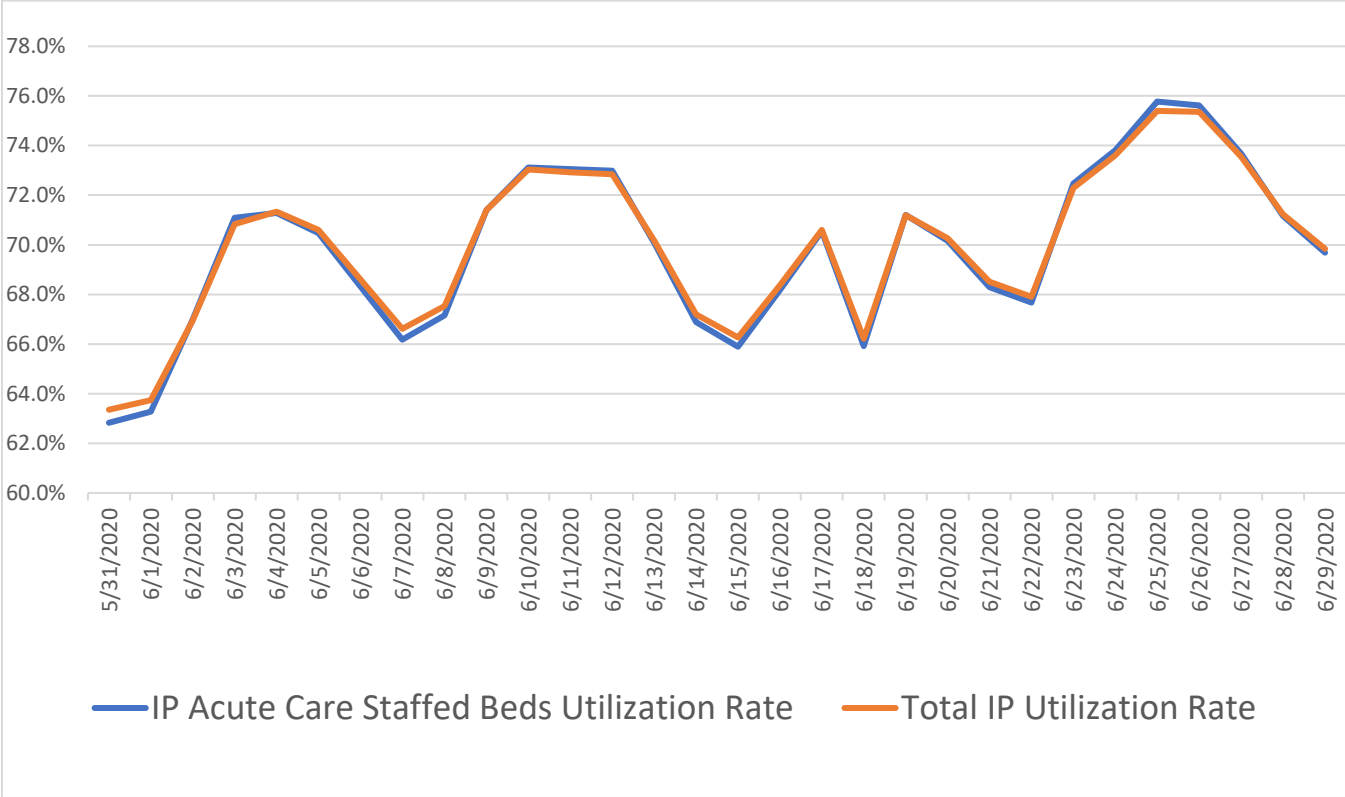
COVID-19 DAILY DATA TRENDS



COVID-19 DAILY DATA TRENDS



COVID-19 DAILY DATA TRENDS



COVID-19 DAILY DATA TRENDS

