



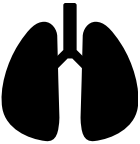


COVID-19 DAILY DATA INPUTS: 9/17/2020

9/16/2020

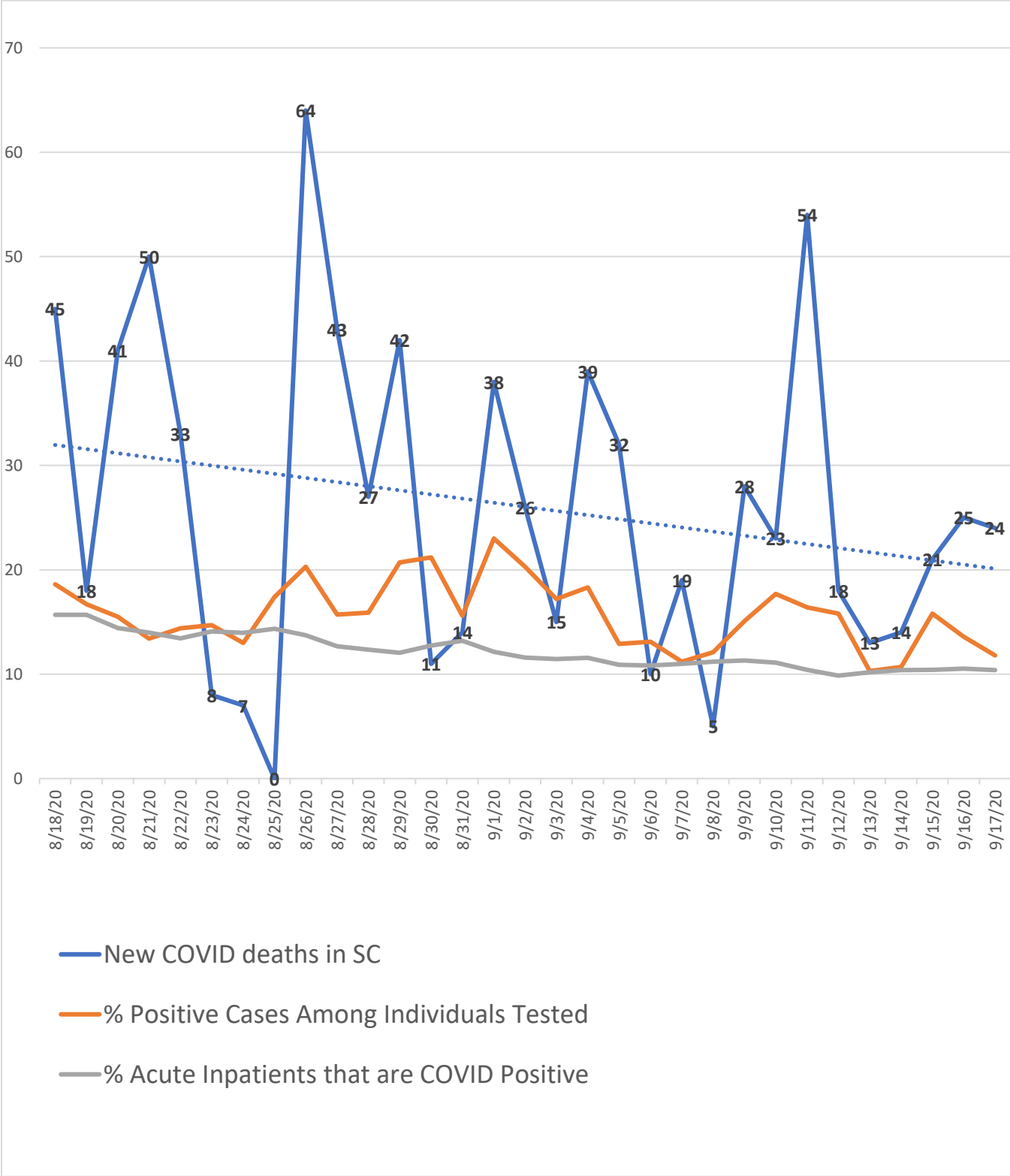
9/17/2020

	New COVID Deaths:	25	24
	Total COVID Deaths:	2,968	2,992
	New COVID Positive Infections:	495	740
	Total Daily Tests Performed:	3,640	6,271
	% Positive Cases Among Individuals Tested:	13.6%	11.8%
	Total COVID Positive Infections:	131,825	132,565
	Total COVID Patients Ventilated:	136	123
	% of COVID Patients Ventilated:	17.3%	15.6%
	% Acute Inpatients that are COVID Positive:	10.5%	10.4%
	Total Acute Care COVID Inpatients:	753	754
	Total COVID Inpatients:	784	784
	Hospitals with >= 90% Occupancy (out of 64):	12	14
	Available Acute Care Staffed Beds:	1,852	1,751
	Acute Care Staffed Beds Utilization:	79.5%	80.5%
	Total Available Inpatient Beds:	2,045	1,921
	Total Inpatient Utilization:	79.9%	81.1%
	Total Available ICU/Critical Care Beds:	371	375
	Total ICU/Critical Care Bed Utilization:	74.4%	74.0%
	Available Acute Care Vents:	1,035	1,086
	Acute Care Vent Utilization:	30.3%	29.0%
	Total Available Vents:	1,060	1,113
	Total Vent Utilization:	31.4%	30.0%

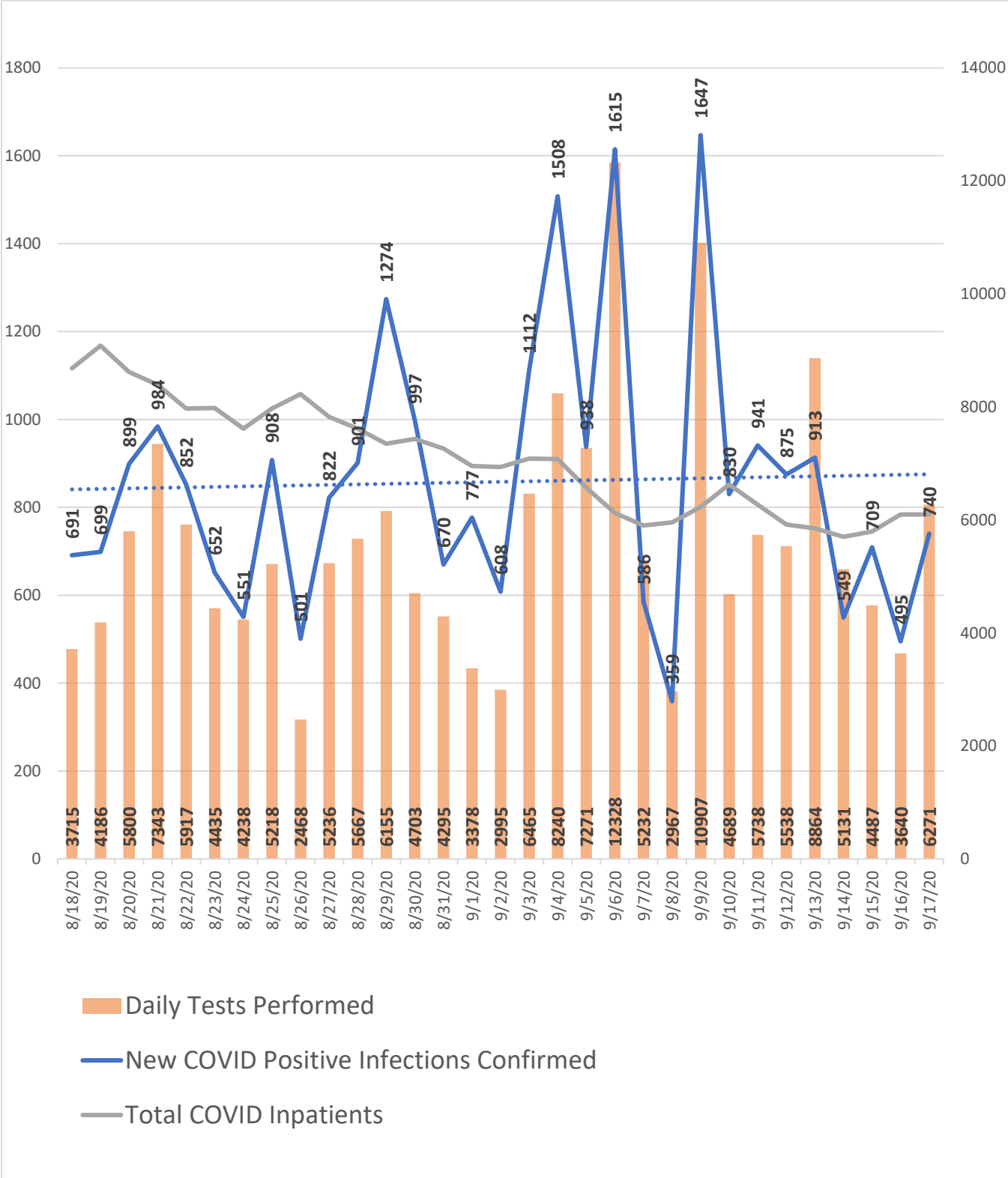
Data Source: TeleTracking Federal Reporting Platform

NOTE: This report includes data from long-term acute care facilities. All beds shown in this report are inpatient beds

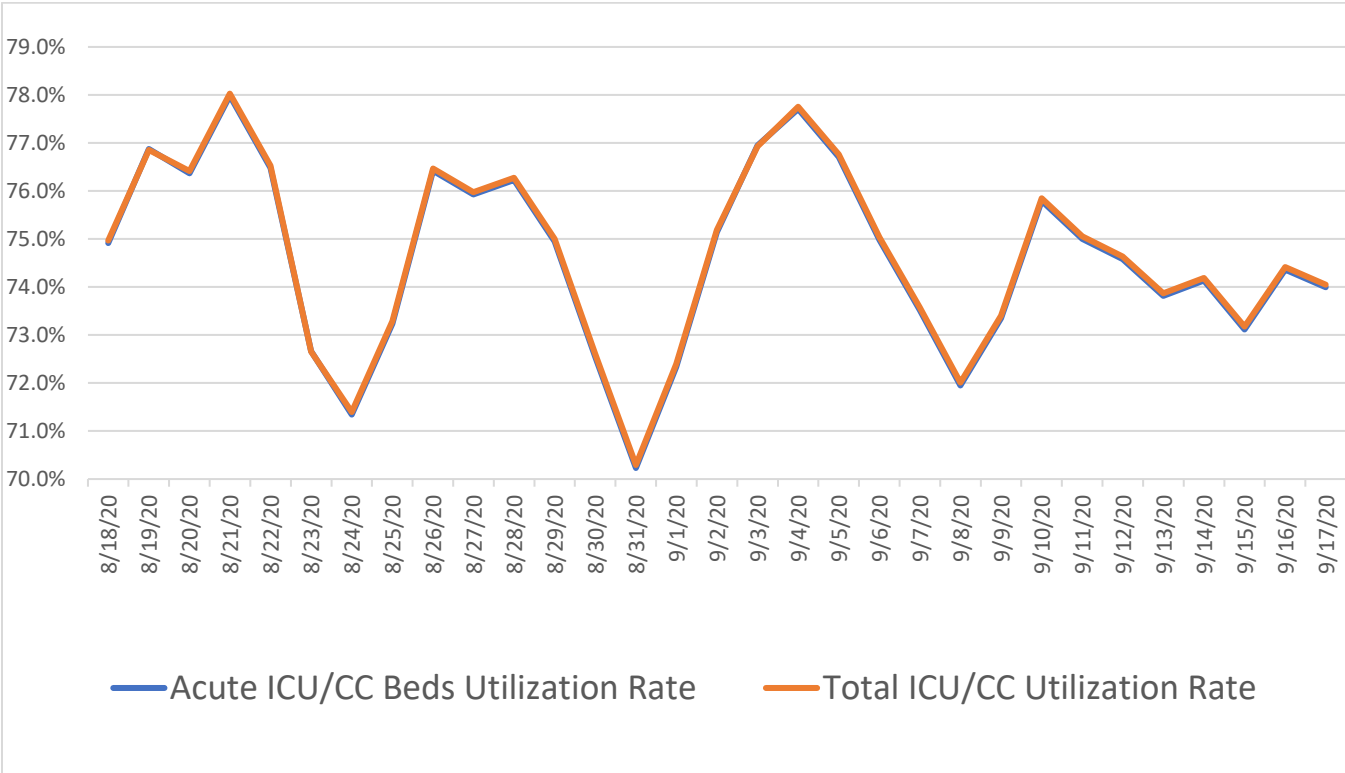
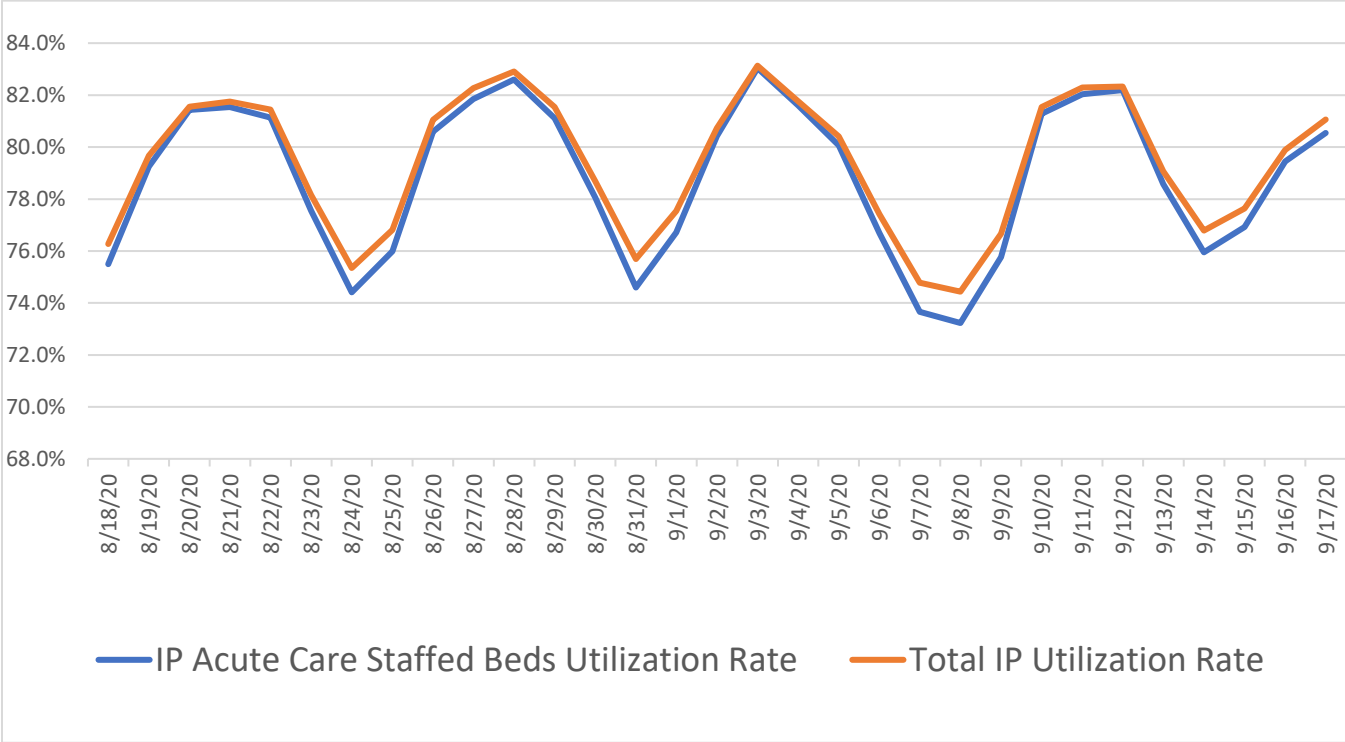
COVID-19 DAILY DATA TRENDS



COVID-19 DAILY DATA TRENDS



COVID-19 DAILY DATA TRENDS



COVID-19 DAILY DATA TRENDS

