



# RS20

**SKID STEER LOADER**







# RS20

## Skid steer loader

RS20 is a new heavy-duty skid steer loader launched by Rippa. The whole machine adopts a high-power engine, which increases the flow of the whole machine and meets more machine needs. The wheelbase of the whole machine is enlarged to ensure stability and safety under high load. It is mainly used in high-intensity and high-load working environments such as large construction sites, mining operations, and heavy equipment handling.



# RS20 Details and benefits

## Strong power, energy saving and high efficiency

- Equipped with the Kubota V2607 engine, delivering powerful output with lower fuel consumption, ensuring reliable performance across demanding job sites.
- The double-speed motor with maximum speed up to 10km/h is installed to achieve high working efficiency.
- It can respond faster to the needs of emergency working conditions such as rapid snow removing.
- The hydrostatic drive device is applied to realize quick change of appropriate attachments in the operation site.



## Hydraulic system is stable and reliable

- Equipped with a load-sensing multi-way valve, ensuring precise flow control and efficient power transmission, adapting to varying load conditions, and enhancing work efficiency and stability.
- Equipped with a four-pump hydraulic system: two tandem closed-loop pumps, an internal charge pump, and a gear pump, with flow rates of 108+108+35.7+108 L/min, ensuring efficient power distribution and smooth, stable operation.



## Comfortable operating environment

- RIPPA skid steer loader introduces the concept of "functional area" and is designed based on user operating comfort. Luxurious adjustable seats with shock absorption and seat belts, and ergonomically controlled electronic control handles give drivers a different driving experience. The rocker switch of the whole machine is integrated on the left column of the cab. Some commonly used horn and accessory control switches (such as planer cylinder control switches) are integrated on the left and right joysticks (optional).



- The layout of joysticks and the instrument panel is optimized in accordance with ergonomic principles so that all drivers of different body sizes can always maintain the best comfort to make operations easier.
- Centralized switch design greatly improves equipment operation convenience and driver work efficiency.
- The cab is equipped with a radio player. When working for a long time, listening to music or radio can relax the mind, relieve fatigue, and improve the operator's mental state and work concentration.
- The cab is spacious and the seats are adjustable. , which greatly improves comfort.



## More function designs

- The hydraulic oil cylinder with strengthened design and integrated design can reduce welding seams and prevent the oil cylinder from breaking easily.
- The air conditioner can adjust the temperature according to the season, cooling in summer and heating in winter, allowing operators to work in a comfortable environment all year round and reduce fatigue
- The LCD multi-function display more intuitively displays various parameter information such as machine fuel volume, power, temperature, time, speed, etc.





# Maintenance, easy and convenient



## [ENGINE]

RS20 skid steer loader equipped with Kubota engine. Powerful performance in a compact design, the excellent performance brought by the extra torque greatly contributes to the improvement of processing performance. At the same time, low fuel consumption, low vibration, low noise, and consideration for the environment have reached a high level.

## [REPAIR PARTS]

- All maintenance parts are in the back, and the rear guard can be opened for maintenance and easy replacement.
- The maintenance points are concentrated on the rear of the machine to realize the one-stop repairs/maintenances without lifting up the cab
- The cab can be tilted backward at a large angle to repair and maintenance portions more accessible.
- The back cover is easy to open, and all components and pipelines are within easy reach, saving time and effort for maintenance.





# One machine with multiple functions

## Multi-machine application

- Industry-standard quick coupler, compatible with mainstream attachments, allowing a fast 30-second switch to boost work efficiency. Versatile in use, compatible with dozens of attachments, including augers, breakers, quick couplers, soil loosening tools, snowplows, 4-in-1 buckets, and dozer blades, meeting various work needs and enhancing operational efficiency and flexibility.
- Equipped with two main auxiliary hydraulic lines and one unloading line, enabling quick connection of various attachments to enhance job flexibility and operational efficiency.



Digger



Auger



Pallet Fork



Rock Bucket



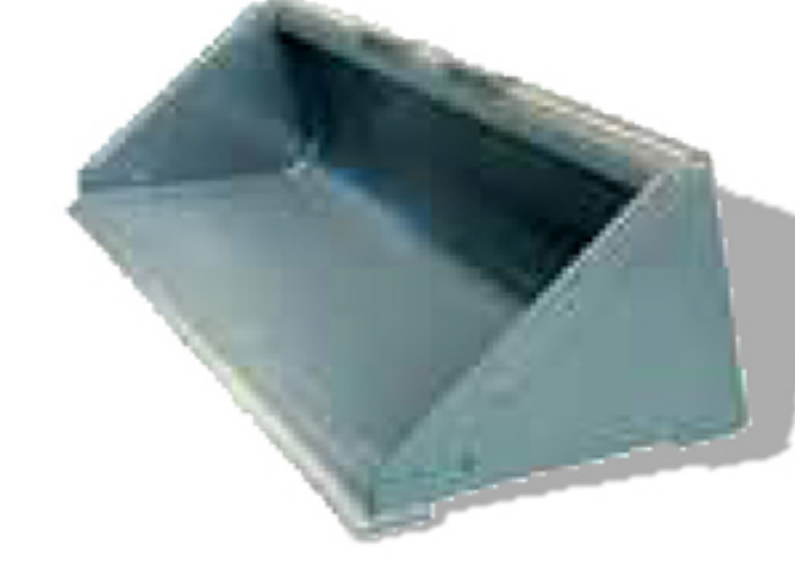
Hydraulic breaker



Rotary drill



Angle Broom



Standard Bucket



4in 1 Bucket



Pile Driver



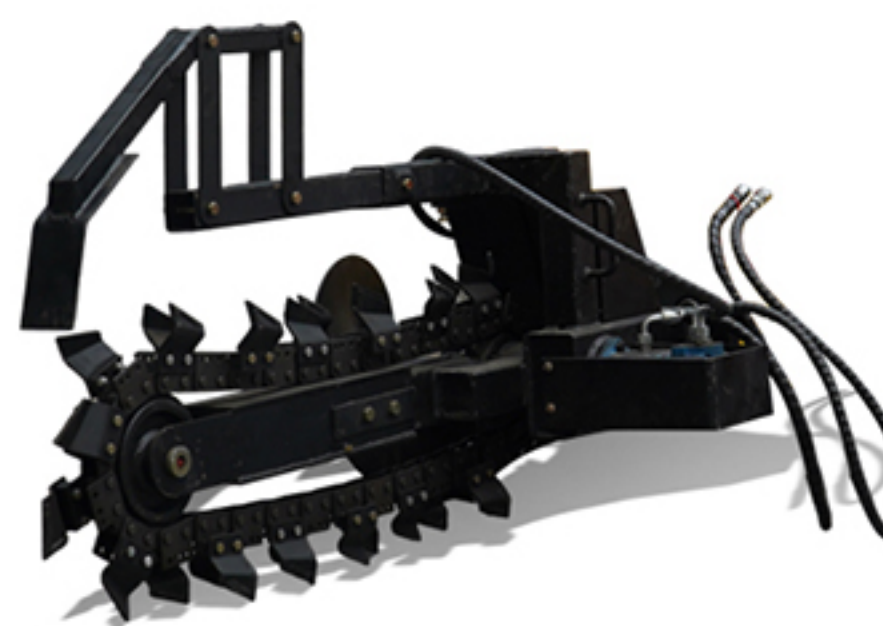
Fork Clamp



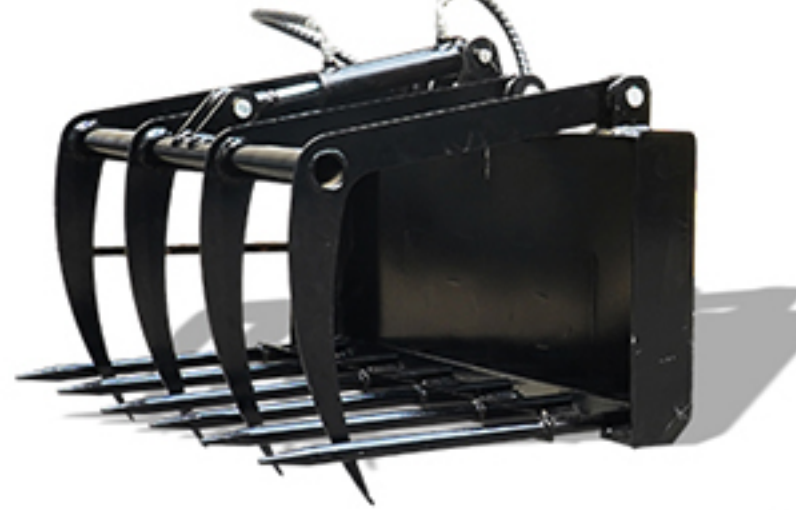
Ditch Compactor

## Install different assistive devices

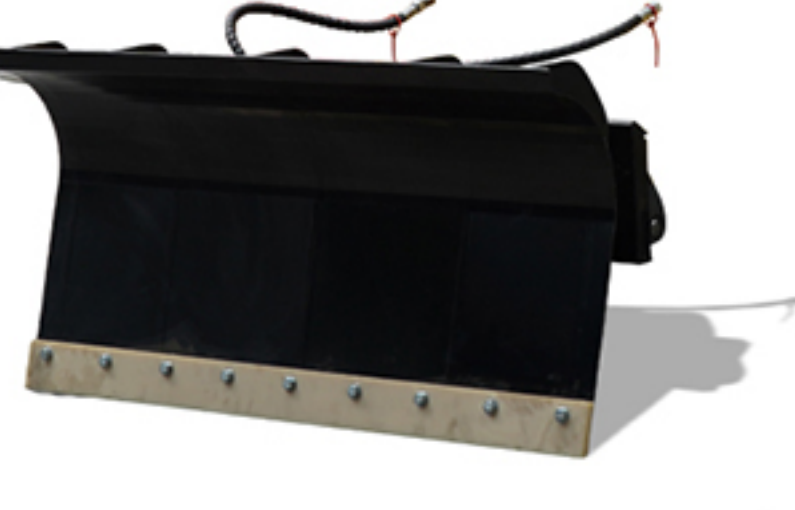
When replacing auxiliary equipment such as hydraulic quick changers, breakers, and wood grabbers, you can easily replace them by pressing the button, which is convenient and quick.



Trencher



Grass Clip



Snow Blade



Grapple

### TRACKS (WHEELED OPTIONAL)

Made of thickened and wear-resistant Rubber tracks make the machine more Stable, smooth and safe when walking.



### [ EXHAUST FAN ]

The double-row fan is located above the rear of the machine, which can quickly dissipate heat to the engine and improve work efficiency.



### [ BUCKET ]

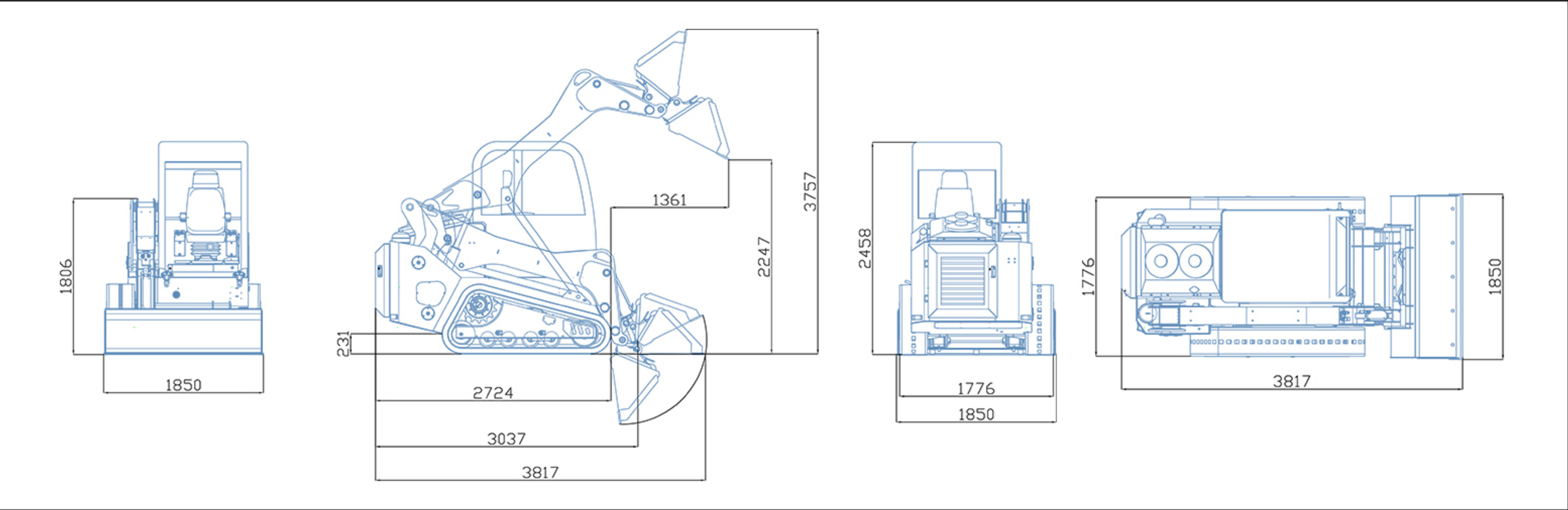
Large-capacity bucket, high working efficiency, can shovel up to 2100 kg of cargo.





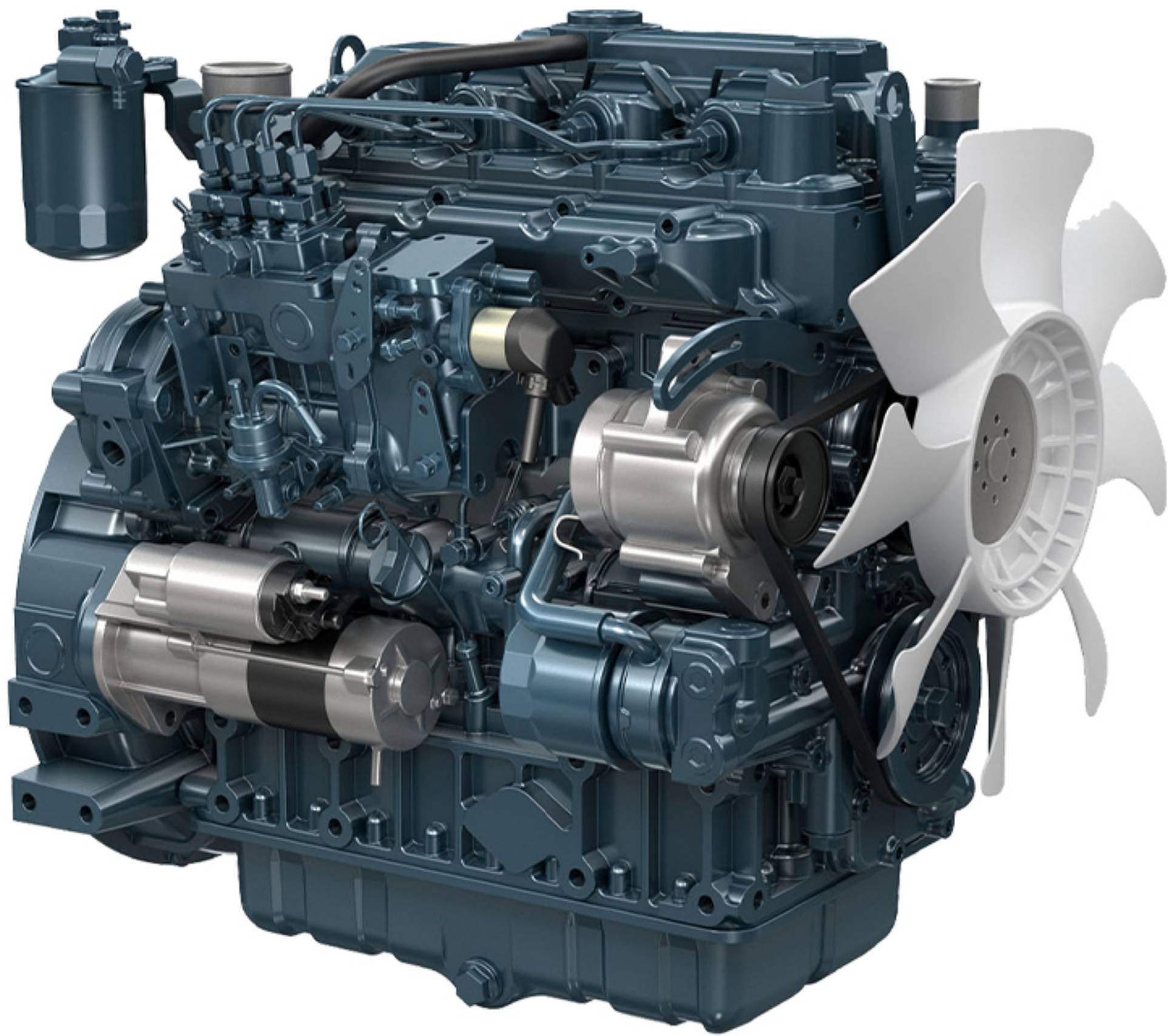
# More performance parameters

## Envelope diagram



## Product parameters

Technical parameters	Model	units	Imperial units
Machine working weight		4225kg	9295lb
Bucket capacity		0.4m³	14.1ft³
Rated load mass(safe load)		1050kg	2310lb
Maximum load mass		2100kg	4620lb
Travel speed low/high speed		0-5/0-10km/h	0-3.1/0-6.2mph
Gradeability		25%	25%
Ground pressure		52.16kpa	7.57psi
Maximum unloading height		2250mm	88.6in
Maximum loading height		3750mm	147.6in
Maximum unloading distance		1360mm	53.5in
Minimum ground clearance		230mm	9.1in
Transport length - with bucket		3820mm	150.4in
Transport length - without bucket		3040mm	119.7in
Transport width		1850mm	72.8in
Transport height		2460mm	96.9in
Bucket width		1850mm	72.8in
Travel pump type			Double closed pump
Work Pressure		4713.8psi	32.5MPa
Fuel charge pump type		Closed pump with built-in gear pump	
Working pump type			Plunger pump
Work Pressure		3045.8psi	21MPa



POWERED BY  
**KUBOTA**  
**V2607**



### High Performance Engine

High performance engines provide a powerful boost for tough works.



### Clean and Low-Noise

Ultra-low noise design, friendly to people and the environment.

Model	RS20
Engine brand	Kubota
Engine model	V2607
Maximum horsepower (ps/hp)	48.3/47.6
Maximum power (Kw)	35.5
Maximum speed (rpm)	2200
Displacement (L)	2.615
Number of cylinders	4
Cooling method	Water cooling



# WE ARE RIPPA

Shandong Rippa Machinery Group Co., Ltd. is located at No. 39, Guang'an Road, Liuhang Sub-district Office, High-tech Zone, Jining City, Shandong Province. It is a national high-tech enterprise with the right to import and export.

The company's staff are vigorous and enterprising, and constantly create the legend and glory of the rippa!



**Shandong Rippa Machinery Group Co., Ltd.**

Add: No. 39, Guang'an Road, Liuhang Subdistrict Office, High-tech Zone, Jining City, Shandong Province

Some specifications are based on engineering measurements and may deviate from actual conditions. Specifications are for comparison purposes only and are subject to change without notice. Specifications of individual Rippa equipment will vary based on normal variations in design, manufacturing, operating conditions and other factors. Some pictures of Rippa equipment are not limited to standard packages.



**[www.rippa.com](http://www.rippa.com)**