



ARIA® NiTiFlex

Endoscopy Made in Italy



 **Foschi**

www.foschigroup.com



THE FIRST LINE OF ENDOSCOPES MADE IN ITALY

The choice of innovative materials elevates us to new and improved quality standards.

**+ ALUMINIUM CHASSIS
FOR STRUCTURAL SOLIDITY**

+ NITINOL SHEATH STRUCTURE

**+ SHAPE-MEMORY INSERT
FOR A LONGER DURABILITY**

**+ FULL HD VIDEO SENSOR
FOR A SUPERIOR IMAGE QUALITY**

+ AUTOCLAVABLE UP TO 10 CYCLES

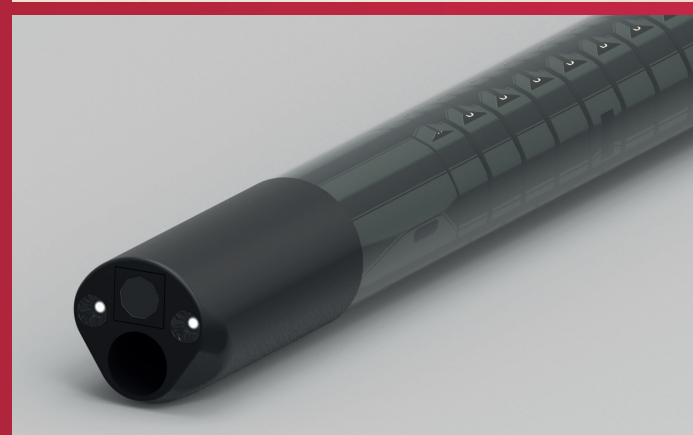
**+ 2 MODEL AVAILABLE
WITH DIFFERENT DIAMETERS**

ARIA NiTiFlex v2.85 Video Endoscope provides excellent diagnostic quality, which is obtained via a state-of-the-art **Full HD 1080p** output CMOS sensor. This technology guarantees a high resolution image with spectrometrically calibrated colours and it is able to accurately replicate various typologies of organic tissues. .

The handle has been tested and designed to be extremely ergonomic, in order to optimise usability of transendoscopic accessories, facilitate handling and minimise weariness during standard utilisation.

With **850mm of working length** and 2,8mm of external diameter, the insert is coated with a biocompatible material—sheath made of **Nitinol**, a Nickel and Titanium shape memory alloy characterised by excellent resistance and flexibility. The choice of these innovative materials allows a wide working channel of 1,2mm and a **distal angulation (up/down) up to 270°**.

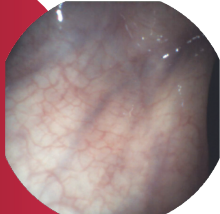
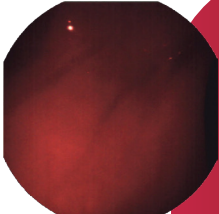
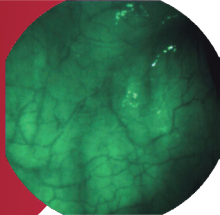
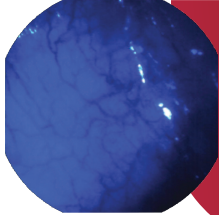
The combination of all these FEATURES is what makes ARIA NiTiFlex v2.85 Endoscope absolutely unique.





DEEVIEW VIDEO PROCESSOR

By connecting the Video Endoscope EndoFlex v2.85 to the Video Processor MP-DEEVIEW RGB LED, you can access a powerful, next-generation LED lighting system, paired with an optical filter switch that allows vision on three different depth levels. Therefore, this system enables early diagnosis and identification of the margins of injuries.

<p>W-EMOS Enables high-resolution vision of internal structures</p>		<p>R-EMOS Emphasises vascularisation patterns of the first layer underlying the mucous membrane</p>	
<p>G-EMOS Emphasises vascularisation patterns of the second layer underlying the mucous membrane</p>		<p>B-EMOS Emphasises vascularisation patterns of the third layer underlying the mucous membrane</p>	

FEATURES

Observation	Output video signal	HDMI
	Image enhancement	Spectrometrically calibrated colours Automatic border enhancement Automatic range selection
	Brightness correction	Incremental with potentiometer 0-100 (%)
	Colour filters	Optical enhancement of the morphological structure of the mucous membrane to reveal up to three depth levels of tissue (selectable through switch on processor)
	White balance	Dedicated button on processor
	Multifunction button	Selectable function between Gain and Enhance
Power	Power supply	~110V/220V AC (±10%)
	Frequency	50Hz/60Hz
Noise	dB	< 52
Light	Bulb	LED
	Colour temperature	≥ 5500K





NITIFLEX v 2.85



The unique characteristics of **NiTiFlex v2.85** make it the perfect instrument for the endoscopic examination of the upper and lower respiratory tracts, the urinary tract and the upper digestive tract of companion animals. It is also a fundamental tool for exotic animal distinctive tool for unconventional animal medicine.



FEATURES

Code	00007366
Working length	850 mm
External diameter	2,85 mm
Working channel	1,2 mm
Distal angulation	up 270°/down 270°
Fibre luce	2



→ External diameter 2,8 mm

→ Working length 1,2 mm

NITIFLEX v 4.4



NiTiFlex v4.4 is the essential tool for the endoscopy examination of companion animals. With its incredible ratio between the external diameter and the large working channel, it allows the vet to successfully carry out all diagnostic and therapeutic procedures.

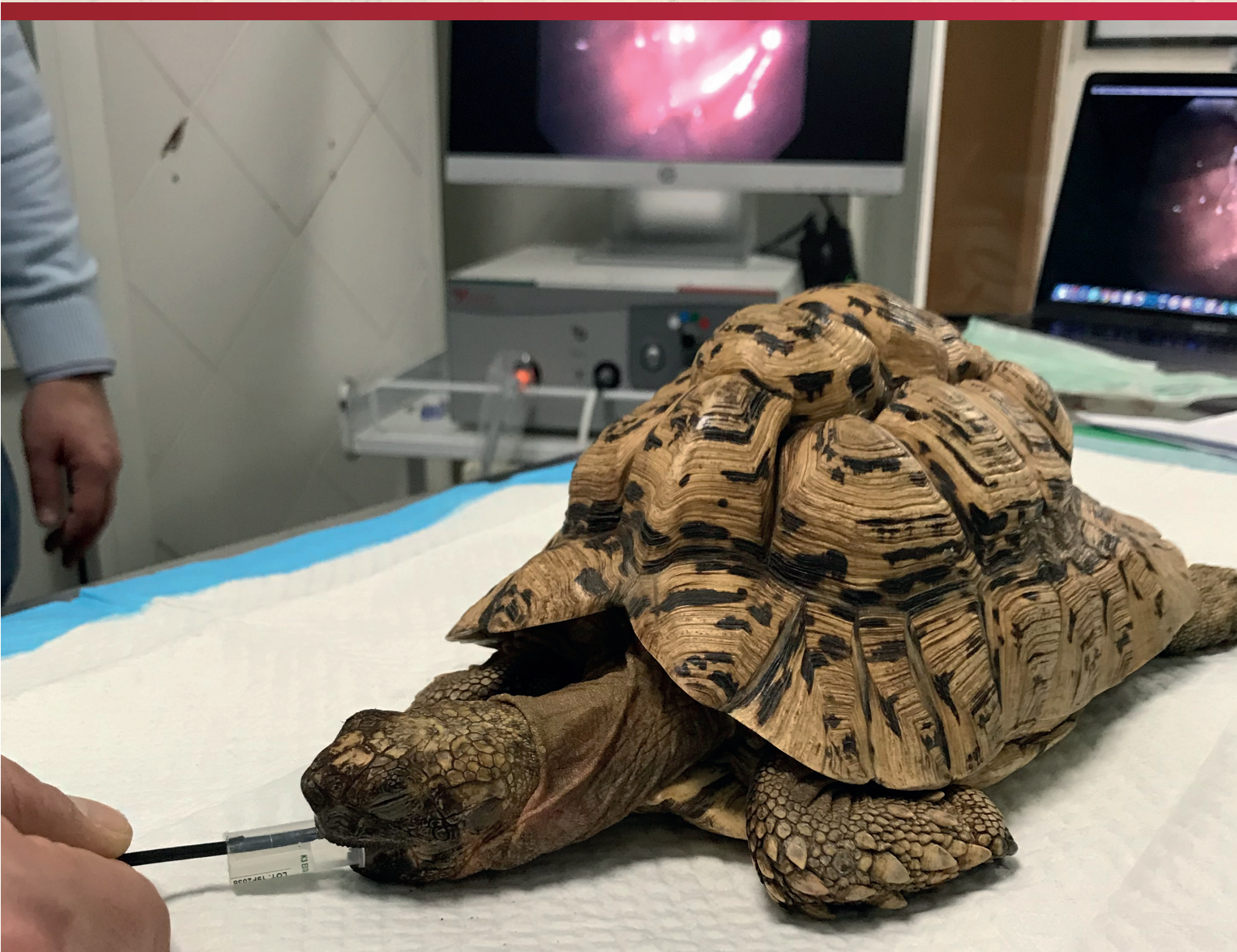
FEATURES

Code	00008294
Working length	850 mm
External diameter	4,4 mm
Working channel	2,2 mm
Distal angulation	up 180°/down 180°
Fibre luce	2



→ External diameter 4,4 mm

→ Working length 2,2 mm



OPTIONAL CAMERA FOR RIGID ENDOSCOPY

The camera head provides excellent diagnostic quality, which is obtained via a state-of-the-art Full HD 1080p CMOS sensor (NATIVE). This technology guarantees a high resolution image with spectrometrically calibrated colours and it is able to accurately replicate various typologies of organic tissue.



C-mount attachment coupler for full compatibility with rigid optics



Next-generation Full HD 1080p CMOS sensor NATIVE (1920x1080), with HDMI digital output



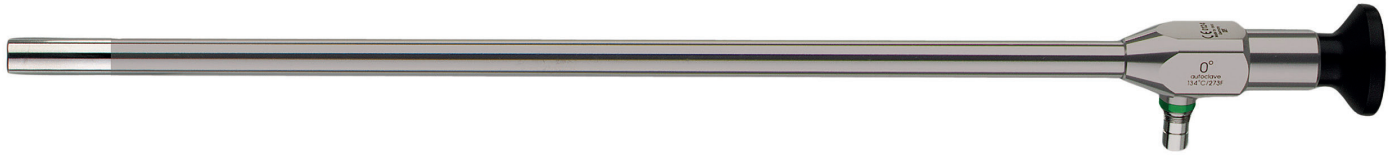
Three customisable buttons with multiple functions, including Gain and Enhance



Ergonomic design to facilitate handling and minimise weariness of operator

RIGID ENDOSCOPES

- + Sapphire full HD glass on the distal end and ocular side
- + Autoclavable at 134° for 18 minutes
- + 'Made in Germany' quality



ARTHROSCOPES

CODE	DIAMETER	LENGTH	DIRECTION OF VIEW
00007582	∅ 1.9 mm	60 mm	0°
00007583	∅ 1.9 mm	60 mm	30°
00007584	∅ 2.7 mm	110 mm	0°
00007585	∅ 2.7 mm	110 mm	30°
00007586	∅ 2.7 mm	110 mm	70°
00007587	∅ 2.7 mm	140 mm	0°
00007588	∅ 2.7 mm	140 mm	30°
00007589	∅ 2.7 mm	175 mm	0°
00007546	∅ 2.7 mm	175 mm	30°
00007591	∅ 2.7 mm	175 mm	70°
00007592	∅ 2.7 mm	187,5 mm	0°
00007593	∅ 2.7 mm	187,5 mm	30°
00007594	∅ 2.7 mm	187.5 mm	70°

LAPAROSCOPES

CODE	DIAMETER	LENGTH	DIRECTION OF VIEW
00007590	∅ 2 mm	300 mm	0°
00007614	∅ 2 mm	300 mm	30°
00007595	∅ 5 mm	300 mm	0°
00007388	∅ 5 mm	300 mm	30°
00007596	∅ 10 mm	339 mm	0°
00007387	∅ 10 mm	341 mm	30°
00007597	∅ 10 mm	341 mm	45°

CYSTOSCOPES

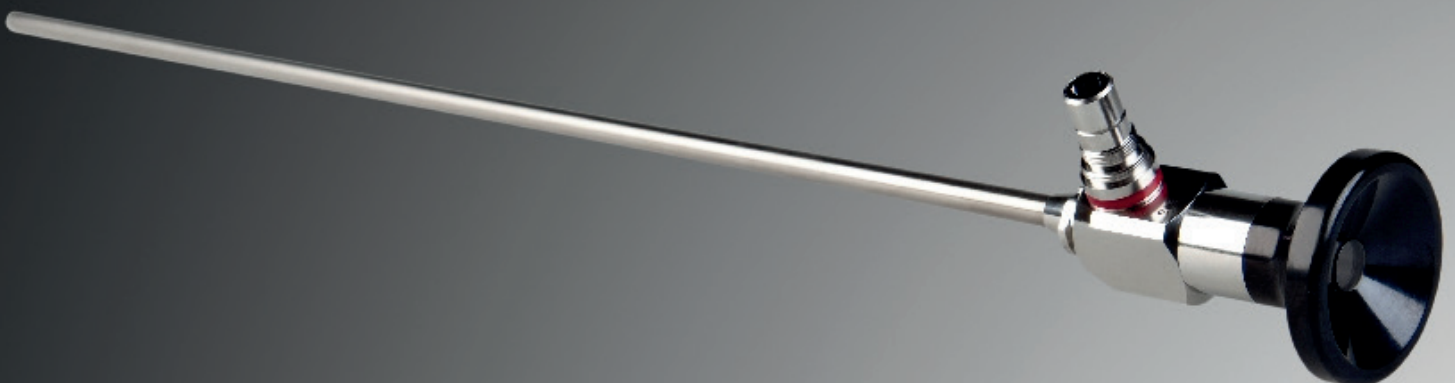
CODE	DIAMETER	LENGTH	DIRECTION OF VIEW
00007606	∅ 2.7 mm	302 mm	0°
00007607	∅ 2.7 mm	302 mm	30°
00007608	∅ 2.7 mm	302 mm	70°

URETEROSCOPES

CODE	DIAMETER	LENGTH	DIRECTION OF VIEW
00007598	∅ 1.5/2.2 mm	315 mm	5°
00007601	∅ 1.5/2.2 mm	430 mm	5°
00007599	∅ 2.0/2.5 mm	315 mm	5°
00007600	∅ 2.0/2.5 mm	315 mm	12°
00007602	∅ 2.0/2.5 mm	430 mm	5°
00007603	∅ 2.0/2.5 mm	430 mm	12°
00007604	∅ 2.7/3.2 mm	315 mm	12°
00007605	∅ 2.7/3.2 mm	430 mm	12°

OTOSCOPES

CODE	DIAMETER	LENGTH	DIRECTION OF VIEW
00007609	∅ 2.7 mm	50 mm	0°
00007610	∅ 2.7 mm	50 mm	30°
00007611	∅ 4 mm	50 mm	0°
00007612	∅ 4 mm	50 mm	30°





Foschi S.r.l • Via di Salone, 132 • 00131 Roma (Italia) • Tel. +39 06 417 905 800 • orders@foschigroup.com

