



ADDENDUM #1

Project Name: ACCC Offshore Wind Training Center at Worthington Campus Issued to: All Bidders
Project No.: 21024.00.001
Date: 17 November 2021

Founding Principals

Thomas J. Sykes AIA PP
William A. Salerno AIA PP

Principals

Kimberly McCarron NCARB
Mark Petrella AIA
John M. DeRiche III AIA

Senior Associate

Austin J. Gerber AIA

RFI

TN Ward

1. Please provide an anticipated award and NTP schedule.

The College Board of Trustees anticipates award of bid the week of December 13th, 2021 with NTP directly following approval.

2. Civil drawing C-1 calls for a landscaped area, but no information is included for what is required. Please clarify.

See updated drawings Addendum #1 which includes a planting plan

Atlantic City
1020 Atlantic Avenue
Atlantic City, NJ 08401
T: 609.345.5222

Philadelphia
The Curtis Center
601 Walnut Street, Suite 1060
Philadelphia, PA 19106
T: 215.395.9555

Weatherby Construction

1. There appears to be several differences between the Site Development Plan on C-1 and the Architectural drawings:
 - a. On the New York Ave. side, C-1 shows a large landscape area, A-101 shows parking and A-300 appears to show raised planters. Which is correct?
[Architectural site plan will follow Civil and have been updated in Addendum #1](#)
 - b. Is there a specification for the plantings or a Landscape Plan?
[See Updated Civil Drawings Addendum #1 which includes a planting plan](#)
 - c. Also on this side, the sidewalk against the building is less than 5' wide on C-1 and dimensioned at 8'-2" on A-101.
[Architectural site plan will follow Civil and have been updated in Addendum #1](#)
 - d. On the Arctic Ave. side there are 11 bollards on C-1 and 12 on A-101 & A-111 due to the reduced sidewalk width noted above.
[Architectural site plan will follow Civil and have been updated in Addendum #1](#)
 - e. Are these bollards set in raised concrete? Please provide a cross section or detail.
[Please see specifications for bollards. Bollards are to be precast concrete with sleeves for installation over steel pipe set in a concrete footer.](#)
2. Is exterior signage shown on A-300 by others?
[Signage is now included as part of scope. See revised written specs on elevations for more information.](#)
3. Please provide detail for low wall with wood cap.
[See Addendum #1 drawings](#)
4. Is there a floor finish on the upper landing and treads of the interior stair or is it exposed concrete?
[Exposed Concrete for both](#)

-
5. Finish note on A-111 says to provide rubber wall base to match existing. What is BOD of the existing base
Base to be verified in field. We believe based on existing drawings provided to us that it is part of the “copper scheme” with a Johnsonite 4” 1/8 rubber base with toe in color 287 “rustic.”

Arthur J. Ogren, Inc.

1. For the Wind Safety Center Training Center Bid – will you accept an alternate for the sunshade?
Please see the attached Masa Ecoshade Data for your review.

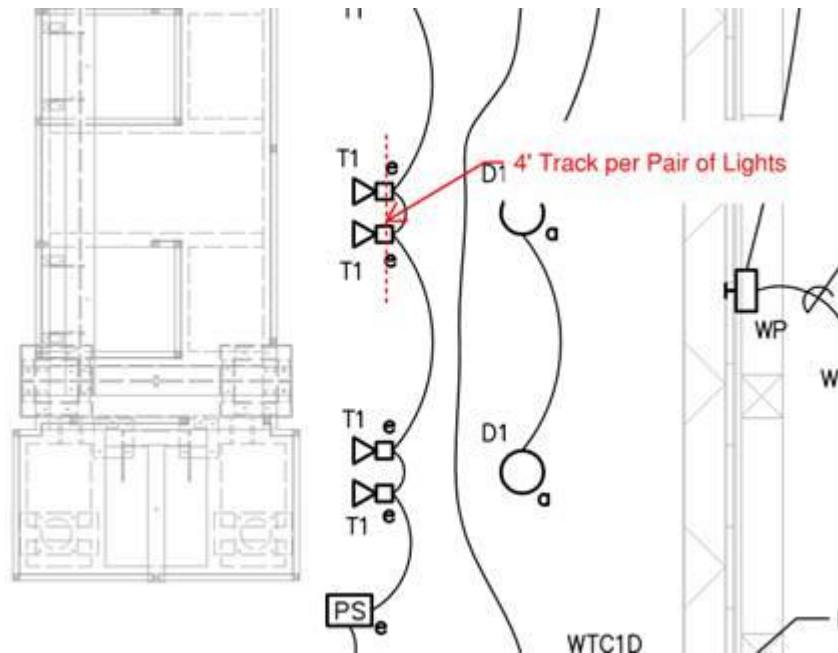
Alternates are acceptable as long as profile, shape, and color ultimately match the existing building.



Scalfo Electric

1. The fixture type T1 is a track head LED. Is this fixture going to be mounted on a track or on individual mounting plates? With either mounting solution there are several options.

The intention is to surface mount each pair of T1 Track Lights to a piece of 4' track that are around the apparatus.



PLEASE NOTE:

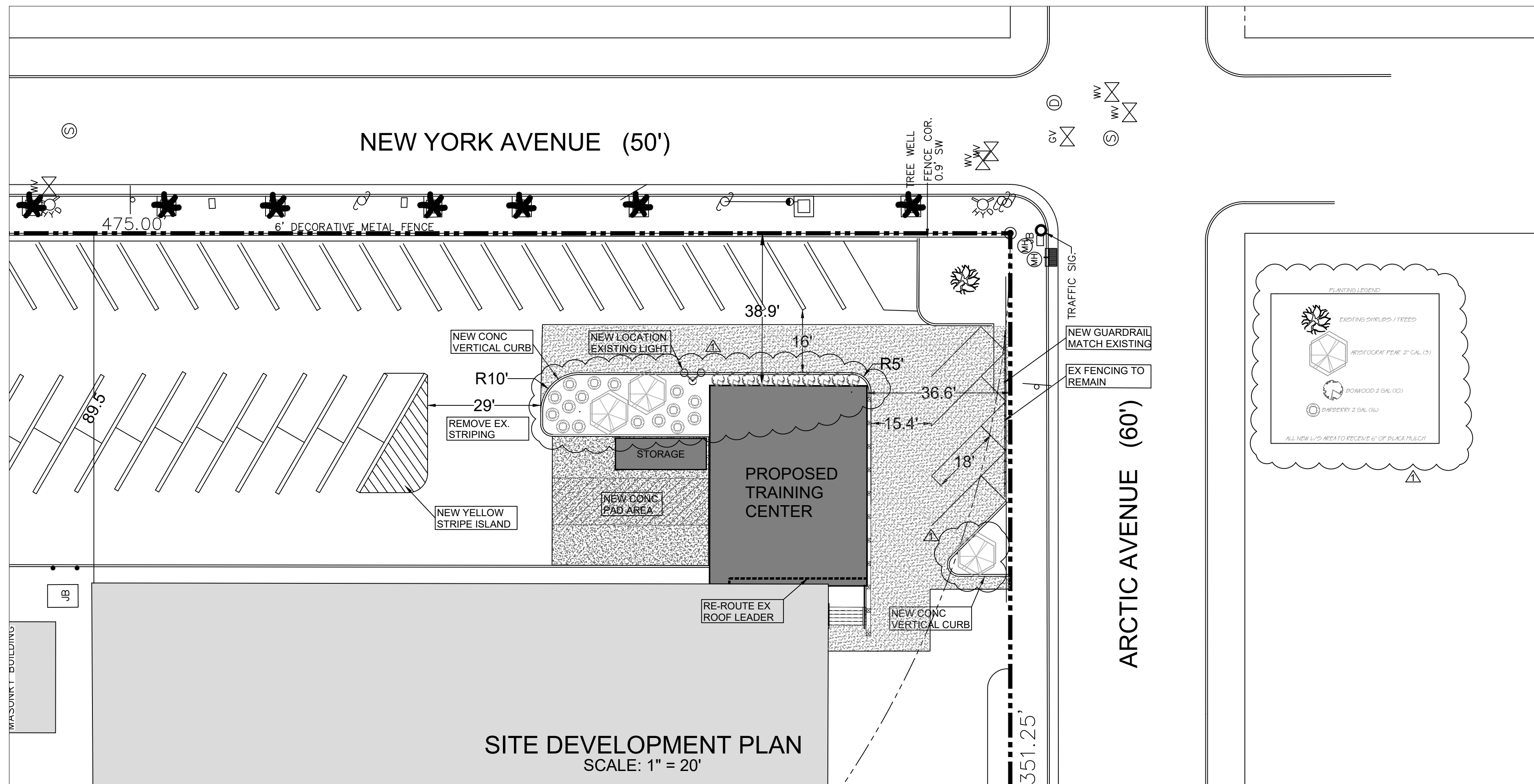
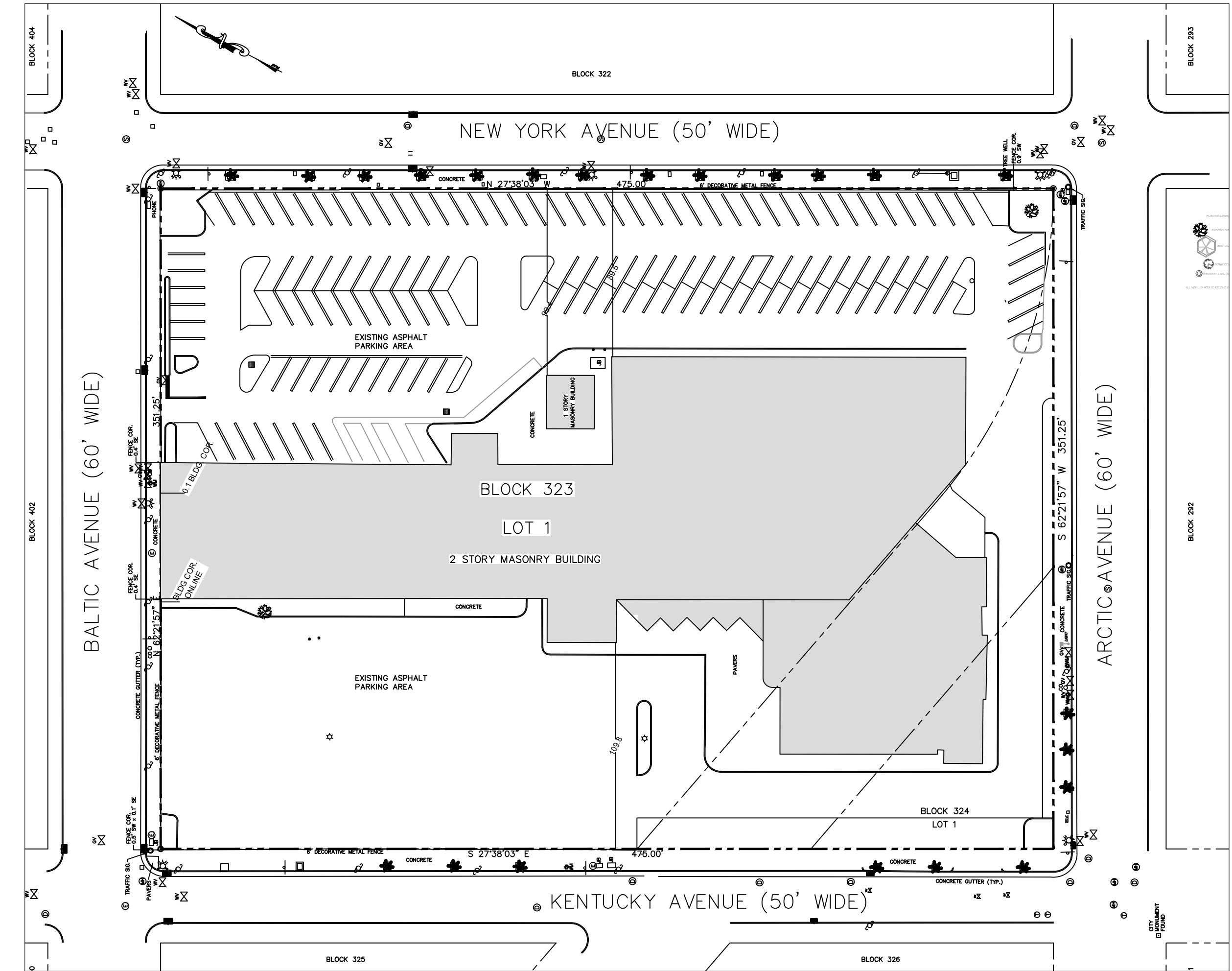
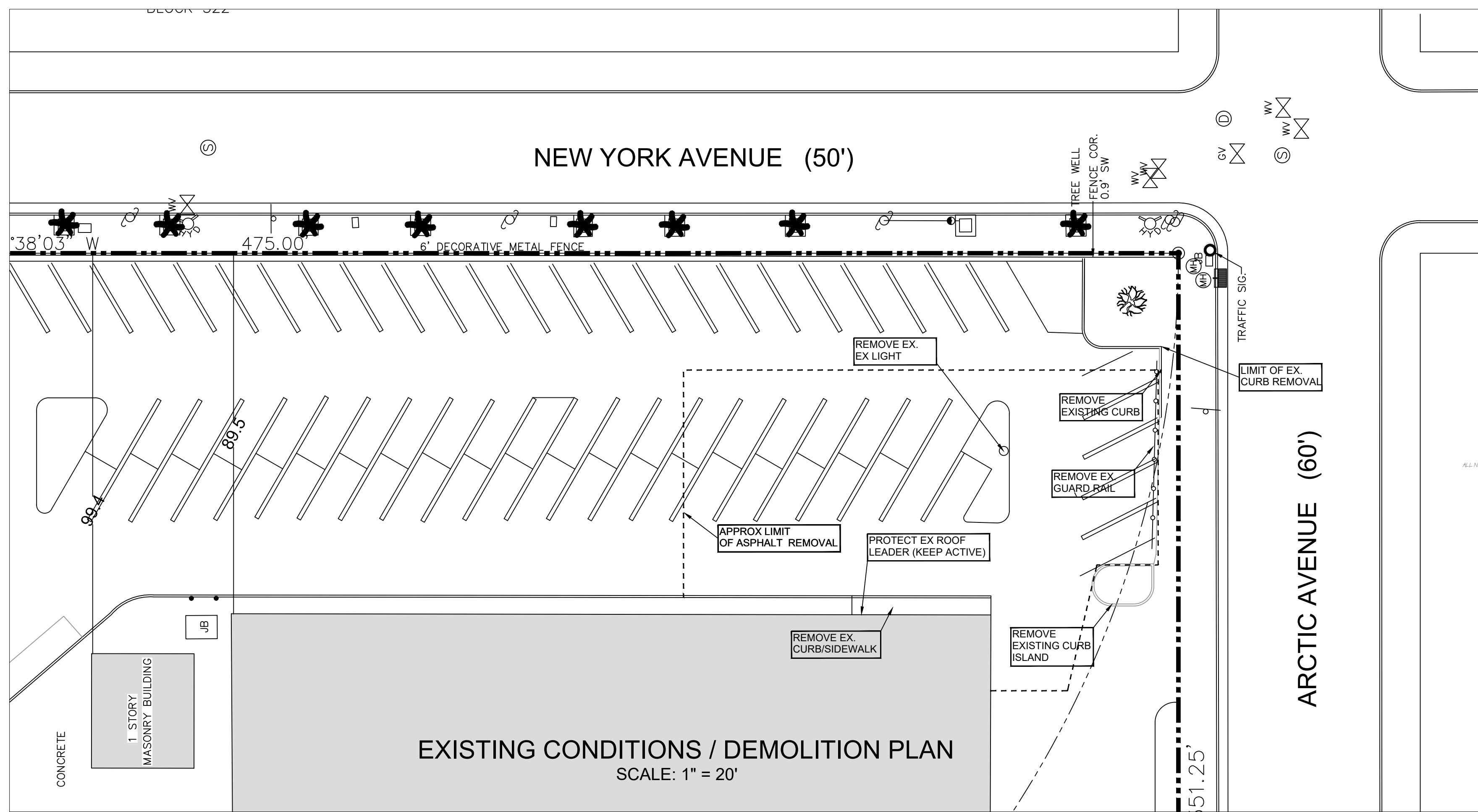
The ACCC has decided to remove the PLA requirement from the bid documents.

END OF ADDENDUM

Submitted by: Keith F. Vreeland Jr. RA NJPO Date Issued: 17 November 2021

CC: Ed Perkins,
SOSH

architecture · interiors · planning




COPYRIGHT © 2020 ARTHUR W. PONZIO COMPANY & ASSOCIATES, INC. ALL RIGHTS RESERVED. THE COPY OR USE OF THIS DOCUMENT OR ANY PORTION THEREOF IS STRICTLY PROHIBITED WITHOUT THE WRITTEN CONSENT OF THE PREPARED. THIS DOCUMENT IS THE SOLE PROPERTY OF ARTHUR W. PONZIO COMPANY & ASSOCIATES, INC. AND HAS BEEN PREPARED SPECIFICALLY FOR USE BY THE OWNER (CLIENT) OF THIS PROJECT AT THIS SITE. IT SHOULD NOT BE USED BY ANY OTHER PERSON OR ENTITY AND MAY NOT BE COPIED IN ANY WAY FOR ANY OTHER PURPOSE AT ANY TIME.

ALL WORK SHALL COMPLY WITH ALL APPLICABLE FEDERAL, STATE AND LOCAL LAWS AND SAFETY REQUIREMENTS AND SHALL BE PERFORMED IN ACCORDANCE WITH THE LATEST PROVISIONS OF THE OCCUPATIONAL SAFETY AND HEALTH ADMINISTRATION (OSHA), THE HIGH VOLTAGE PROXIMITY ACT, STATE OF NEW JERSEY, ADOPTED 7/21/48 AS P.L. 1948, c.249, THE NEW JERSEY UNIFORM CONSTRUCTION CODE, ICC, ASTM SPECIFICATIONS, ALL LOCAL ORDINANCES AND PERMIT CONDITIONS.

A.W. PONZIO CO & ASSOCIATES, INC. RESPONSIBILITIES DO NOT INCLUDE ANY FIELD INSPECTION, CONSTRUCTION MANAGEMENT, CONSTRUCTION OR CONTRACTOR'S COMPLIANCE WITH CONSTRUCTION DOCUMENTS.

NO.	DATE	BY	DESCRIPTION	NO.	DATE	BY	DESCRIPTION
1	11-17-21	JJB	ADDENDUM 1				


ARTHUR W. PONZIO CO. & ASSOCIATES, INC.
 SURVEYORS, PLANNERS, ENGINEERS
 400 NORTH DOVER AVENUE, ATLANTIC CITY, N. J. 08401
 PHONE: 609-344-8194 FAX: 609-344-1594
 NEW JERSEY STATE AUTH. NO.: 24GA28001300

JON J. BARNHART
 PROFESSIONAL PLANNER N.J. NO. 33LI00581500
 PROFESSIONAL ENGINEER N.J. NO. GE43483

ARTHUR W. PONZIO, JR.
 PROFESSIONAL PLANNER N.J. NO. 33LI00267600
 PROFESSIONAL LAND SURVEYOR N.J. NO. 24GS02831400

SITE DEVELOPMENT PLAN
 BLOCK 323 LOT 1
 ATLANTIC CITY ATLANTIC COUNTY NEW JERSEY
 SCALE: SEE PLAN
 DATE: 10-28-21
 BY: JJB
 PROJ. NO.: 36085

SHEET NO.
C-1
 SHEET 1 of 2

OFFSHORE WIND SAFETY CENTER - TRAINING ROOM

ATLANTIC CAPE COMMUNITY COLLEGE

SOSH
- atlantic city, NJ - philadelphia, PA -

DWG. NO.	SHEET TITLE		
02 CIVIL			
C-1	SITE DEVELOPMENT PLAN	X	
C-2	SITE DETAILS	X	
03 STRUCTURAL			
S-100	FOUNDATION AND ROOF FRAMING PLAN	X	
S-200	GENERAL NOTES, SCHEDULES	X	
S-201	SPECIAL INSPECTIONS	X	
S-300	FOUNDATION DETAILS AND SECTIONS	X	
S-400	FRAMING DETAILS	X	
S-401	FRAMING SECTIONS	X	
04 ARCHITECTURE			
AC-000	COVER	X	R
AC-001	GENERAL NOTES AND LEGENDS	X	X
AC-002	MOUNTING HEIGHT DETAILS	X	X
AC-010	PARTITION TYPES, LEGENDS, & NOTES	X	X
AC-101	EGRESS PLAN	X	X
AD-101	DEMOLITION FLOOR PLAN	X	R
A-101	FIRST FLOOR OVERALL PLAN	X	R
A-111	FIRST FLOOR PLAN	X	R
A-112	SECOND FLOOR AND ROOF PLANS	X	R
A-300	EXTERIOR ELEVATIONS	X	R
A-401	BUILDING SECTIONS	X	X
A-500	EXTERIOR WALL ASSEMBLY DETAILS	X	X
A-501	WALL SECTIONS & DETAILS	X	R
A-700	STAIR AND HANDRAIL DETAILS	X	X
A-900	DOOR SCHEDULE, WINDOW SCHEDULE, AND DETAILS	X	R
05 MECHANICAL			
M001	MECHANICAL LEAD SHEET	X	
M002	MECHANICAL SPECIFICATIONS	X	
M101	PARTIAL MECHANICAL DEMOLITION PLANS - FIRST AND SECOND FLOOR	X	
M101	PARTIAL MECHANICAL NEW WORK PLANS - FIRST FLOOR, SECOND FLOOR & ROOF	X	
M201	MECHANICAL SCHEDULES & DETAILS	X	
06 PLUMBING			
P001	PLUMBING LEAD SHEET	X	
P101	PARTIAL PLUMBING NEW WORK PLAN	X	
P102	PARTIAL PLUMBING NEW WORK PLAN	X	
07 FIRE PROTECTION			
FP001	FIRE PROTECTION LEAD SHEET	X	
FP101	PARTIAL FIRE PROTECTION PLANS	X	
08 ELECTRICAL			
E000	ELECTRICAL GENERAL NOTES, LEGEND, SYMBOLS, KEY PLANS & PANEL SCHEDULES	X	
ED101	FIRST AND SECOND FLOOR DEMOLITION PARTIAL PLANS	X	
E101	FIRST FLOOR & ROOF NEW WORK PARTIAL PLANS	X	
E102	FIRST FLOOR NEW WORK LIGHTING PARTIAL PLAN, DETAIL & SCHEDULE	X	
09 FIRE ALARM			
FA000	FIRE ALARM NOTES, LEGEND, SYMBOLS AND KEY PLAN	X	
FA101	FIRE ALARM DEMOLITION & NEW WORK PARTIAL PLANS	X	



Thomas J. Sykes, A.I.A., P.P.
Founding Principal
William A. Salerno, A.I.A., P.P.
Founding Principal
Mark Petrella, A.I.A.
Principal
Kimberly McCarron, NCARB
Principal
John M. DeRiche III, R.A., A.I.A., NCARB
Principal

Offshore Wind Safety Center -
Training Room
1535 Bacharach Blvd, Atlantic
City, NJ 08401

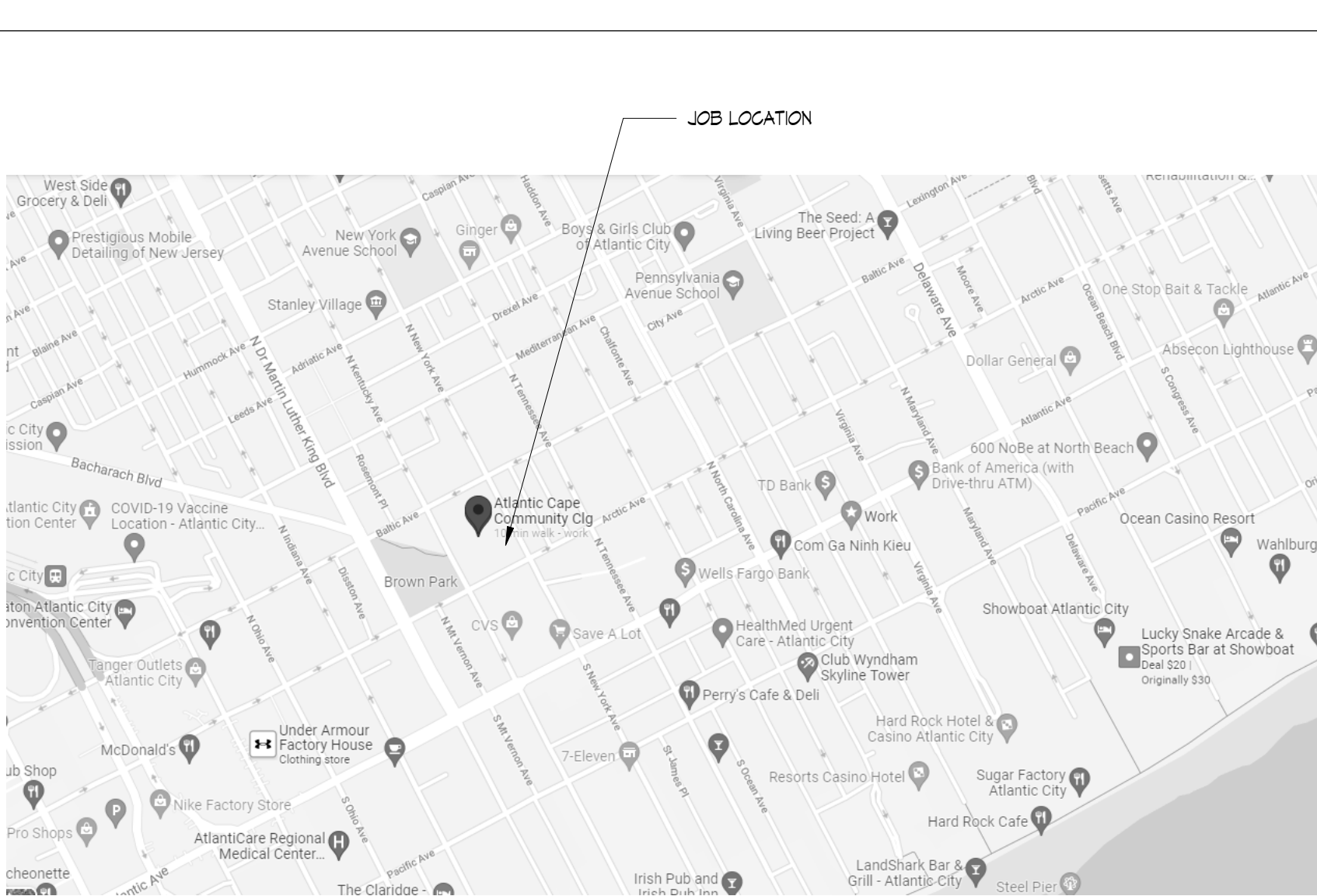
CONSTRUCTION DOCUMENTS
10.27.2021

REVISIONS		
NO.	DATE	DESCRIPTION
1	11.17.21	ADDENDUM NO 1

DRAWING TITLE:
COVER

DRAWN BY: Author
REVIEWED BY: Checker
PROJECT NO.

DRAWING NO.
AC-000



OWNER
ATLANTIC CAPE COMMUNITY COLLEGE
5100 BLACK HORSE PIKE
MAYS LANDING, NJ 08330

ARCHITECT OF RECORD
SOSH ARCHITECTS
1020 ATLANTIC AVENUE
ATLANTIC CITY, NJ 08401
P: 609.345.5222

CIVIL ENGINEER
AUTHOR W. PONZIO CO. & ASSOCIATES, INC
400 NORTH DOVER AVENUE,
ATLANTIC CITY, NJ 08401
P: 609.344.8194

STRUCTURAL ENGINEER
O'DONNELL & NACCARATO
701 MARKET STREET, SUITE 6000
PHILADELPHIA, PA 19106
P: 215.925.3788

MEP ENGINEER
CONCORD ENGINEERING
2311 ATLANTIC AVE
ATLANTIC CITY, NJ 08401
P: 609.272.9620

REGIONAL MAP	SCALE N.T.S.	3	LOCATION MAP	SCALE N.T.S.	2	PROJECT TEAM	SCALE 12" = 1'-0"	1
--------------	-----------------	---	--------------	-----------------	---	--------------	----------------------	---

Thomas J. Sykes, A.I.A., P.P.
Founding Principal
William A. Salerno, A.I.A., P.P.
Founding Principal
Mark Petrella, A.I.A.
Principal
Kimberly McCarron, NCARB
Principal
John M. DeRiche III, R.A., A.I.A., NCARB
Principal

X
Thomas J. Sykes - New Jersey License # 21A00762900

Offshore Wind Safety Center -
Training Room
1535 Bacharach Blvd, Atlantic
City, NJ 08401

CONSTRUCTION DOCUMENTS
10.27.2021

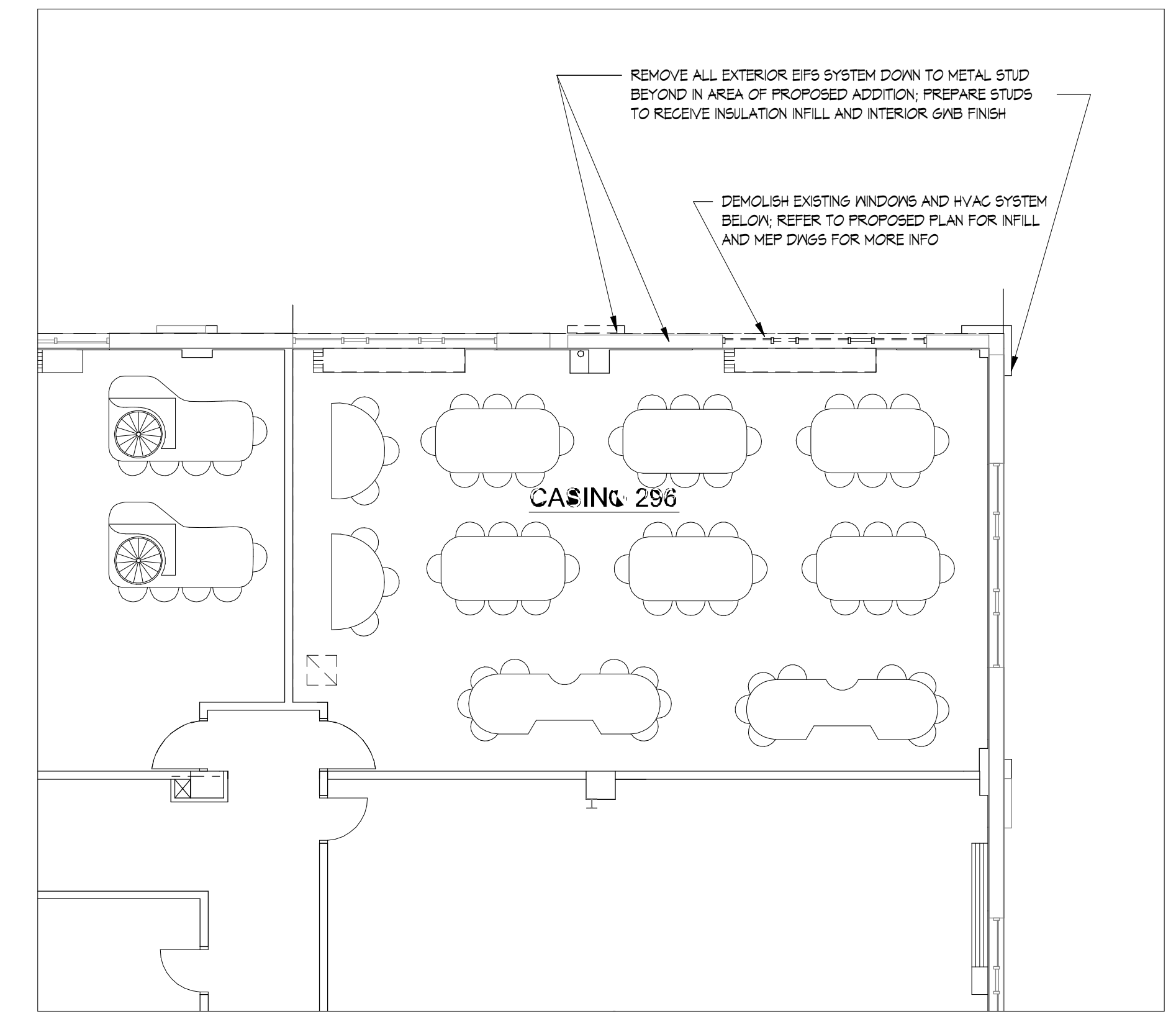
REVISIONS

NO.	DATE	DESCRIPTION
1	11.17.21	ADDED/NO 1

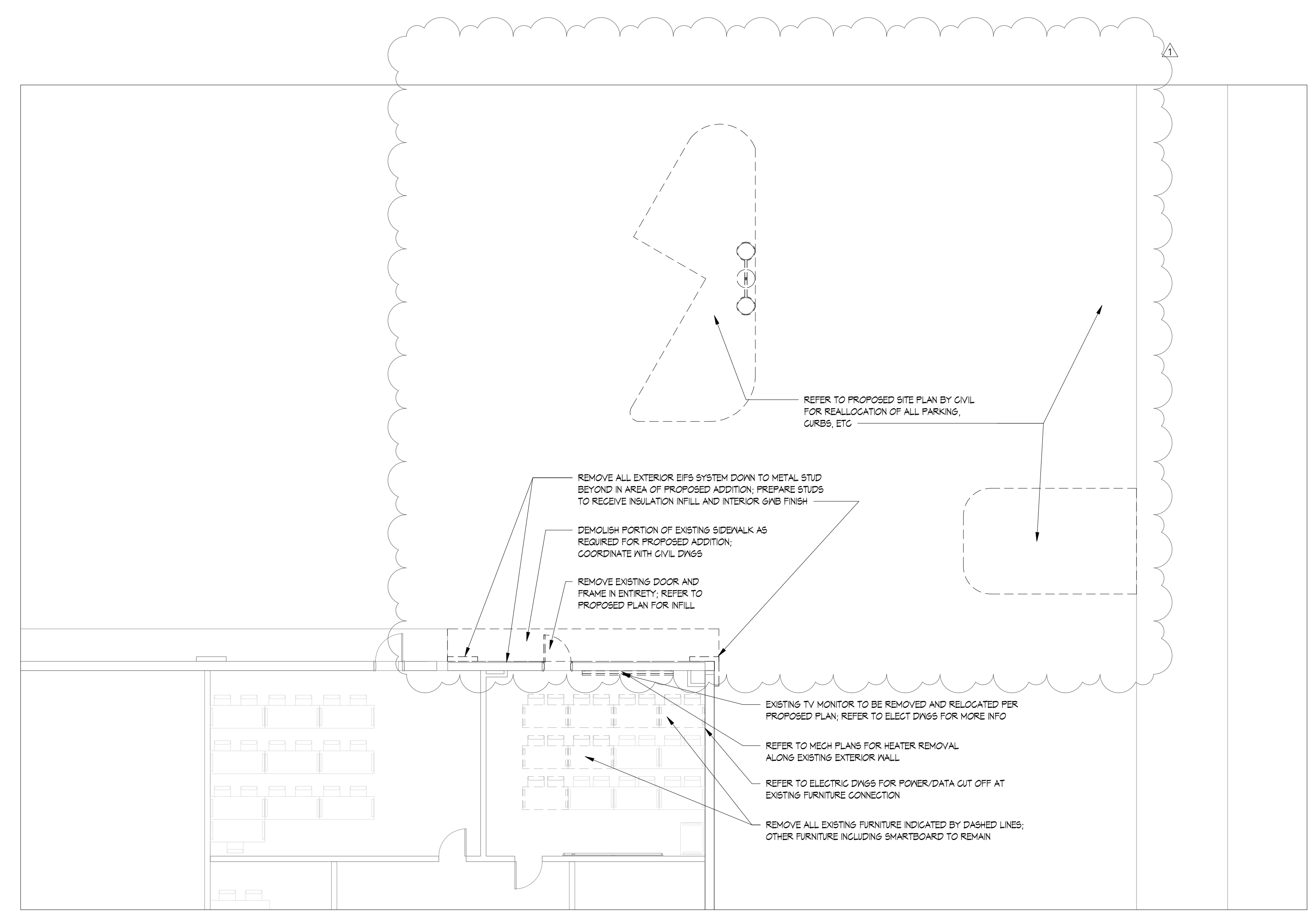
DRAWING TITLE:
DEMOLITION FLOOR PLAN

DRAWN BY: Author
REVIEWED BY: Checker
PROJECT NO. **AD-101**

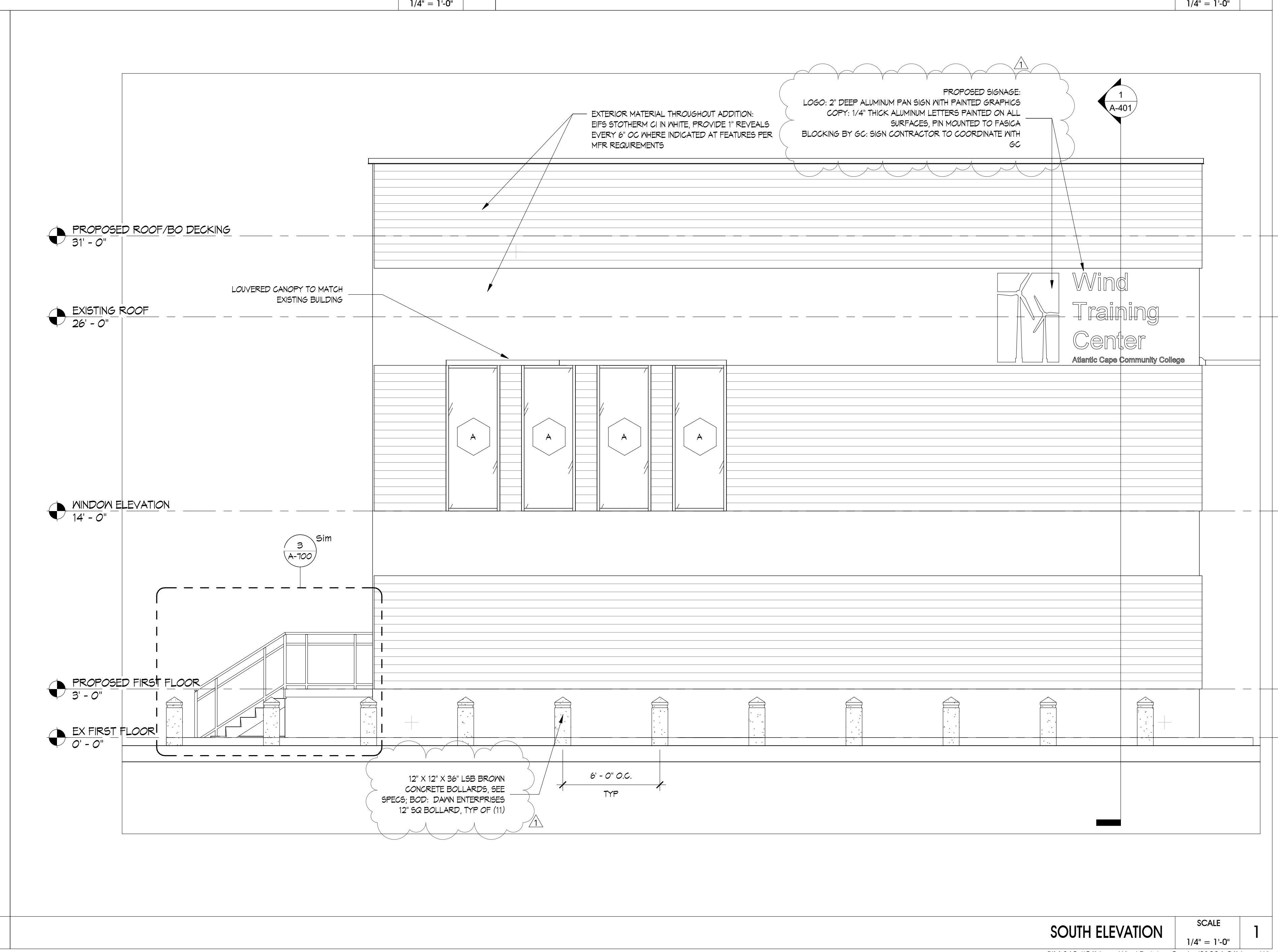
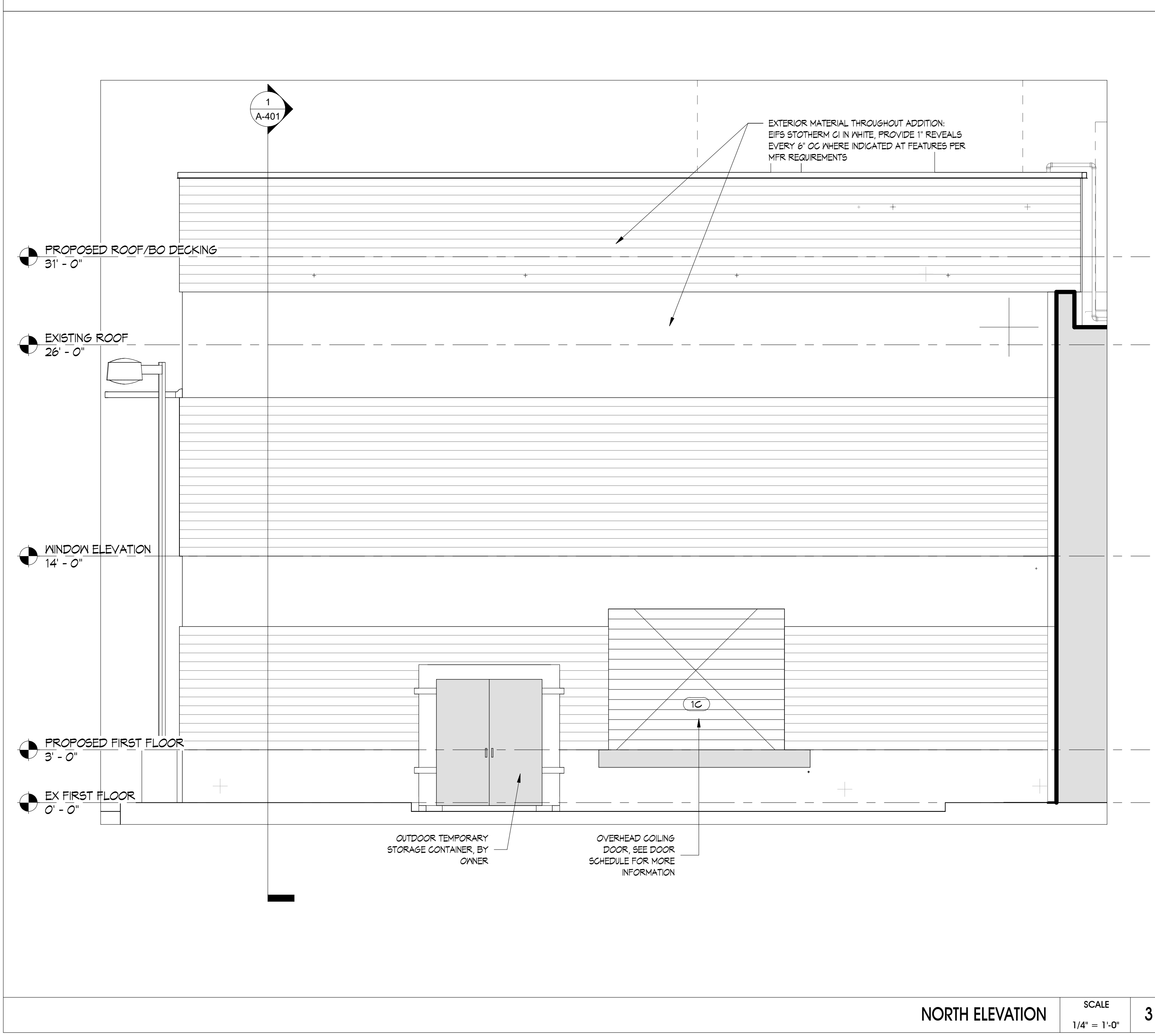
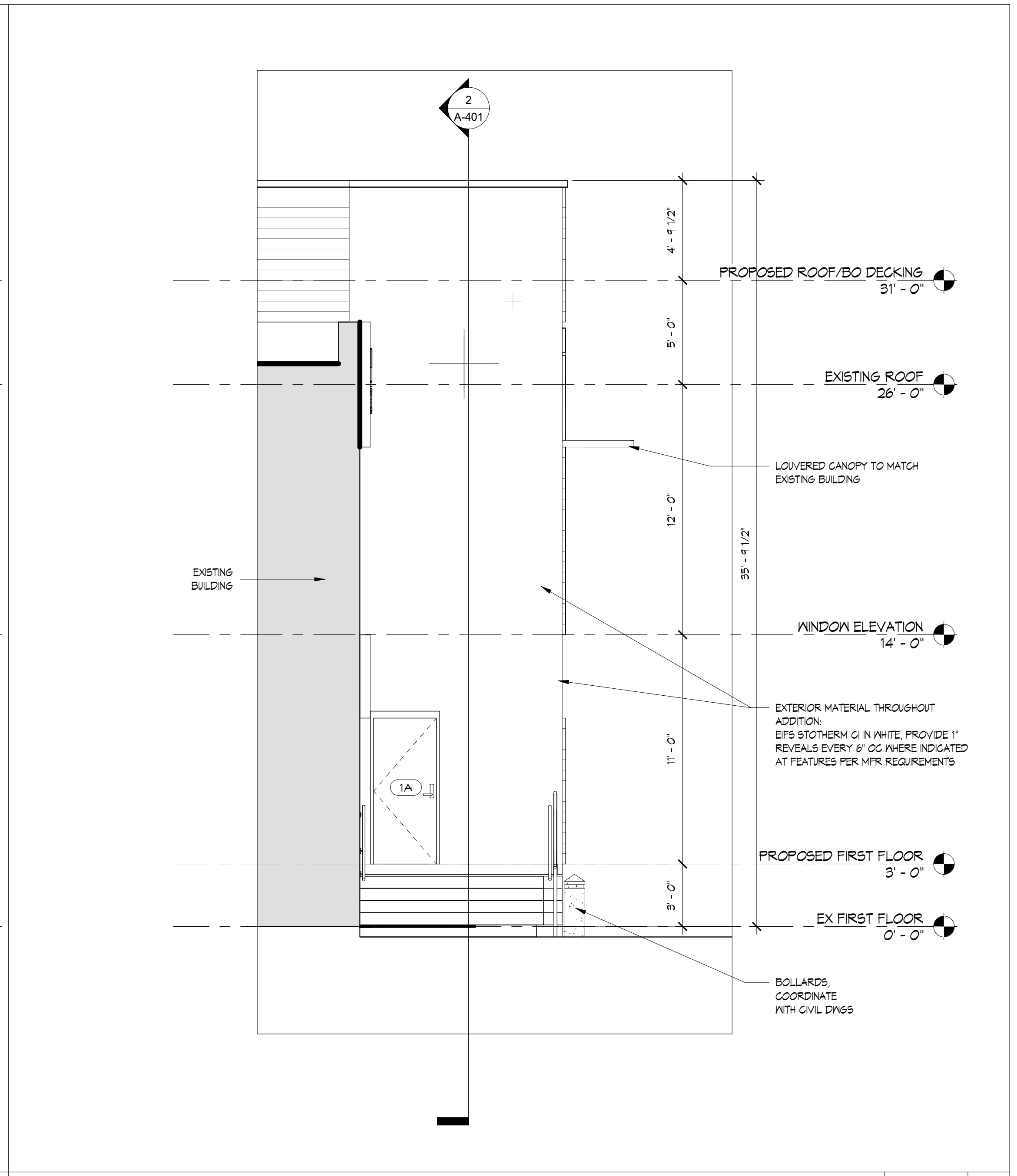
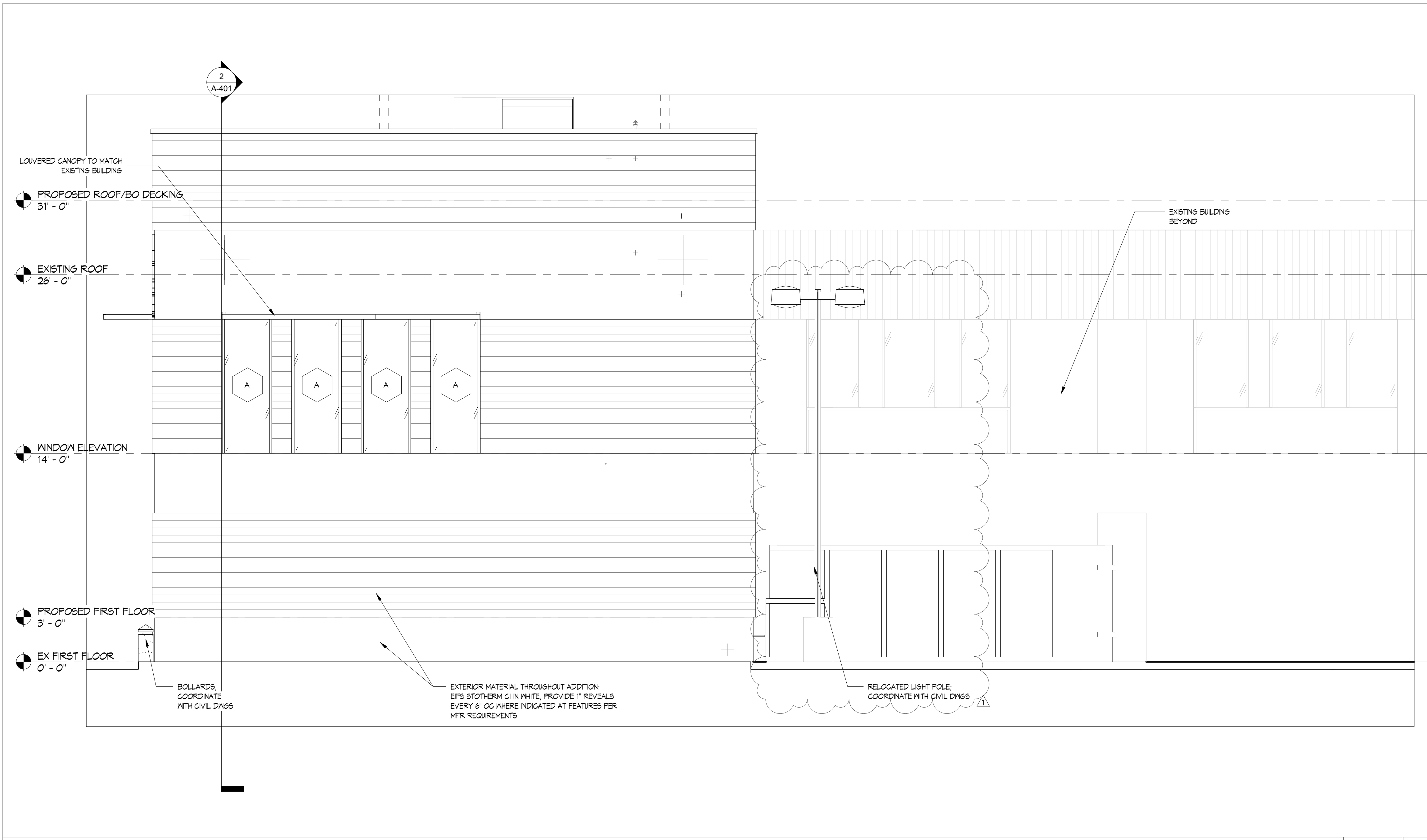
DRAWING NO.
AD-101



SECOND FLOOR DEMOLITION PLAN SCALE 1/8" = 1'-0" 2



FIRST FLOOR DEMOLITION PLAN SCALE 1/8" = 1'-0" 1



Thomas J. Sykes, A.I.A., P.P.
Founding Principal
William A. Salerno, A.I.A., P.P.
Founding Principal
Mark Petrella, A.I.A.
Principal
Kimberly McCarron, NCARB
Principal
John M. DeRiche III, R.A., A.I.A., NCARB
Principal

X
Thomas J. Sykes - New Jersey License # 21A00762900

Offshore Wind Safety Center -
Training Room

1535 Bacharach Blvd, Atlantic
City, NJ 08401

CONSTRUCTION DOCUMENTS
10.27.2021

REVISIONS

NO.	DATE	DESCRIPTION
1	11.17.21	ADDENDUM NO 1

DRAWING TITLE:
EXTERIOR ELEVATIONS

DRAWN BY: Author
REVIEWED BY: Checker
PROJECT NO. **A-300**

DRAWING NO.
A-300

Thomas J. Sykes, A.I.A., P.P.
Founding Principal
William A. Salerno, A.I.A., P.P.
Founding Principal
Mark Patrella, A.I.A.
Principal
Kimberly McCarron, NCARB
Principal
John M. DeRiche III, R.A., A.I.A., NCARB
Principal

Thomas J. Sykes - New Jersey License # 21A00762900

Offshore Wind Safety Center -
Training Room
1535 Bacharach Blvd, Atlantic
City, NJ 08401

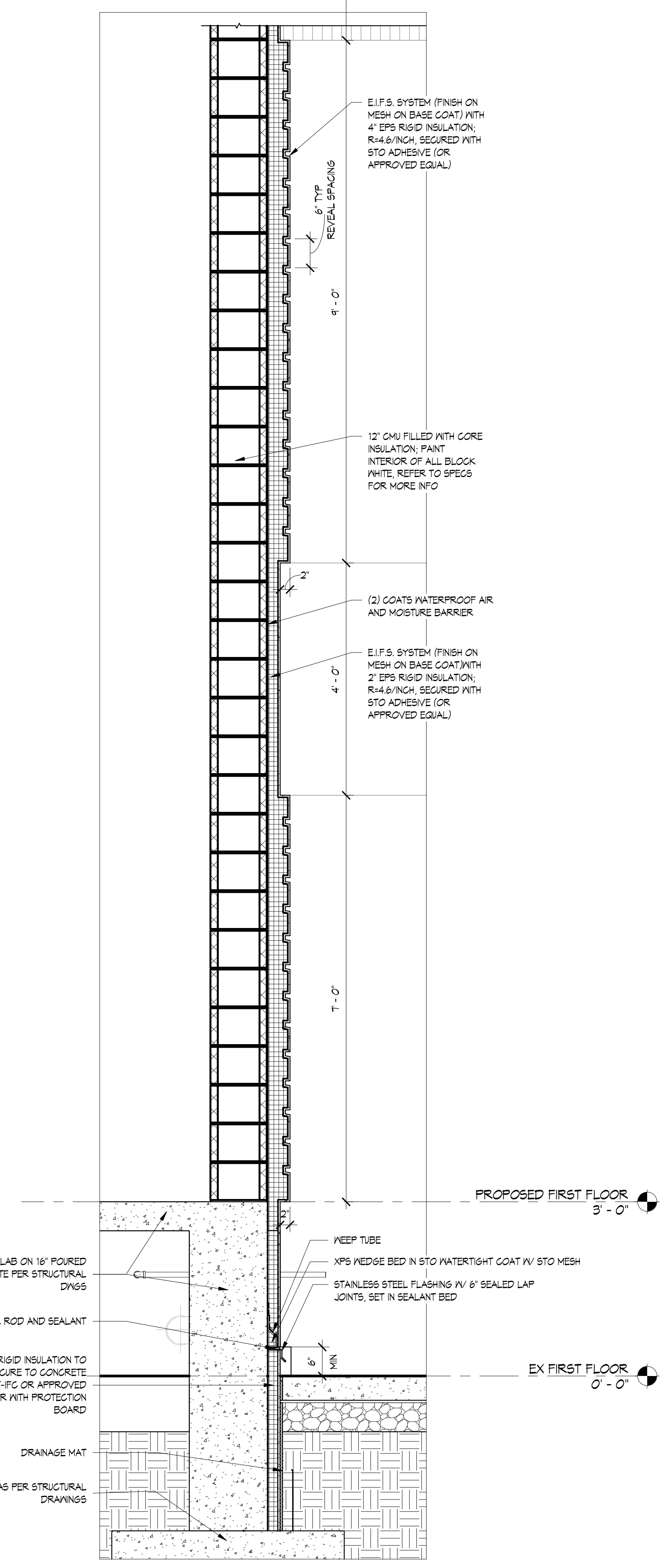
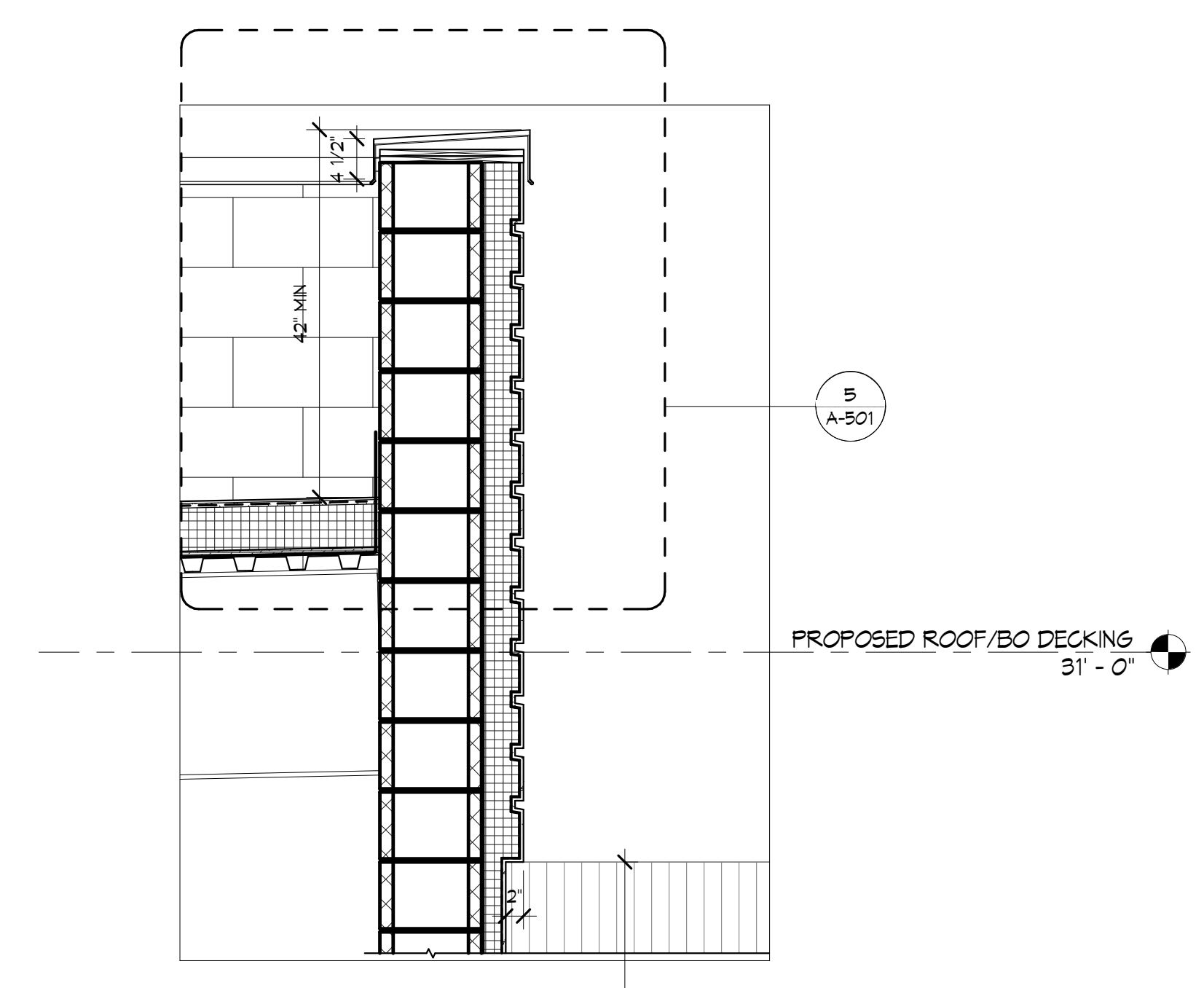
CONSTRUCTION DOCUMENTS
10.27.2021

REVISIONS

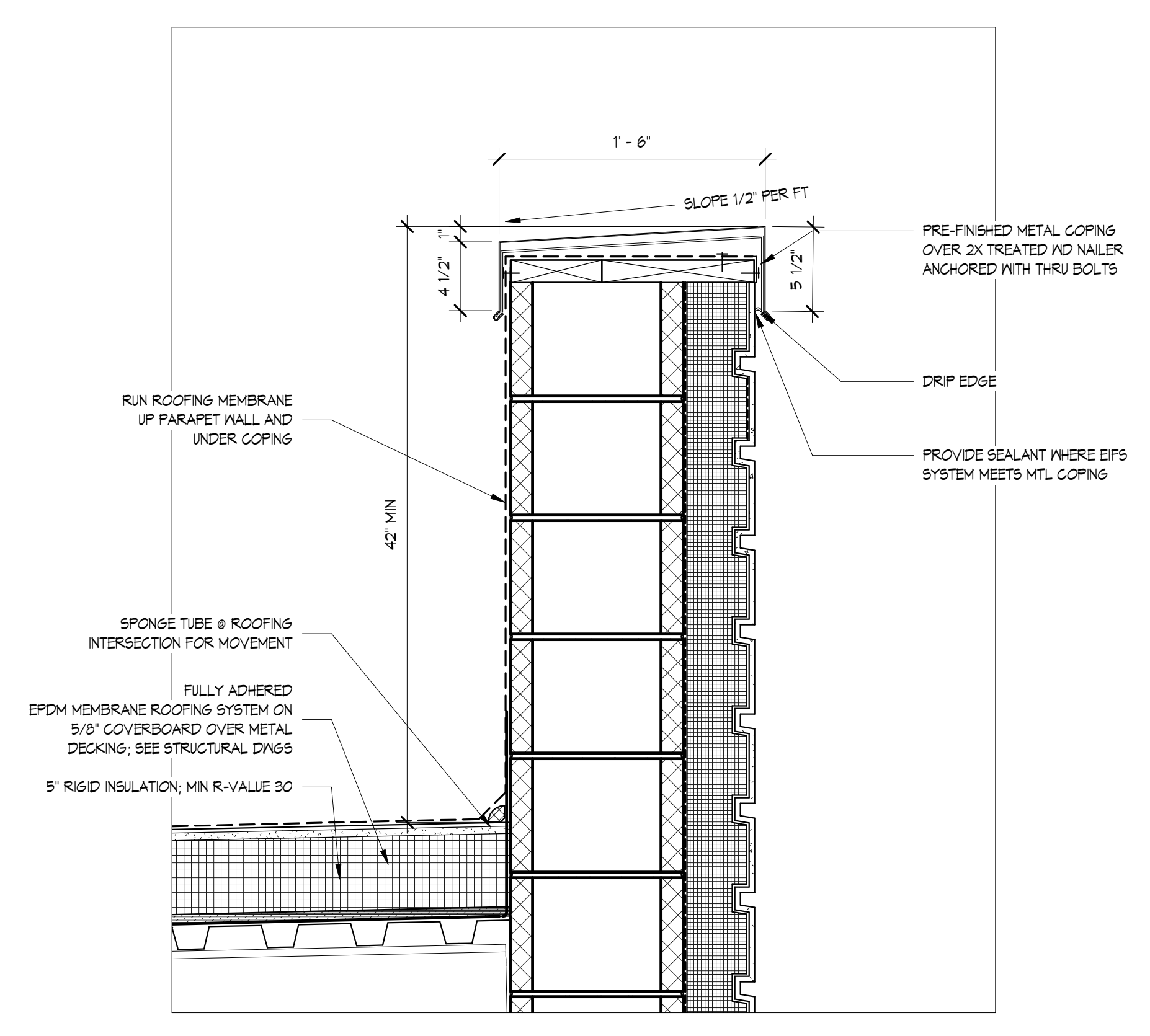
NO.	DATE	DESCRIPTION
1	11.17.21	ADDED NUM NO 1

DRAWING TITLE:
WALL SECTIONS & DETAILS

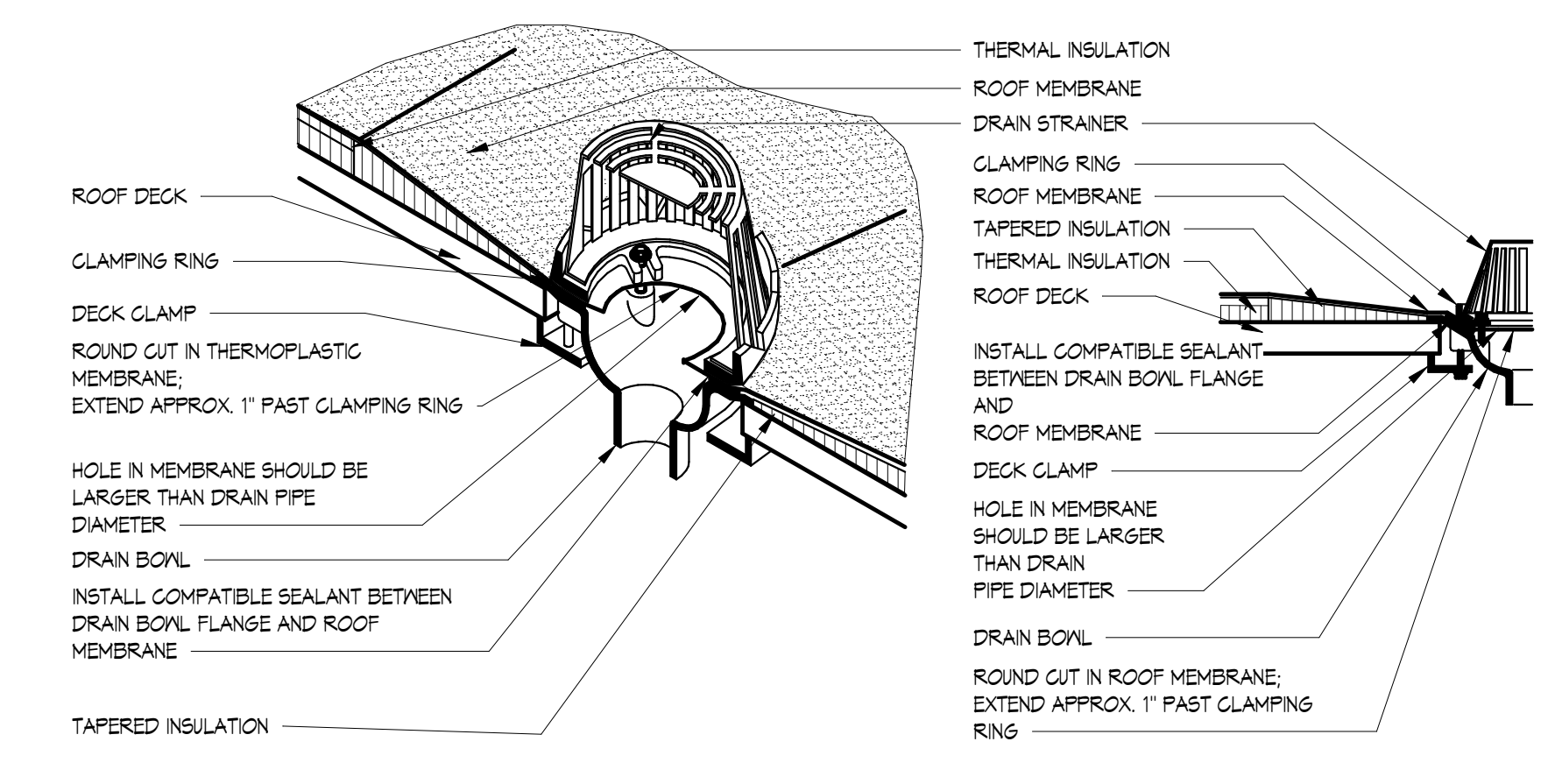
DRAWN BY: Author
REVIEWED BY: Checker
PROJECT NO.
A-501



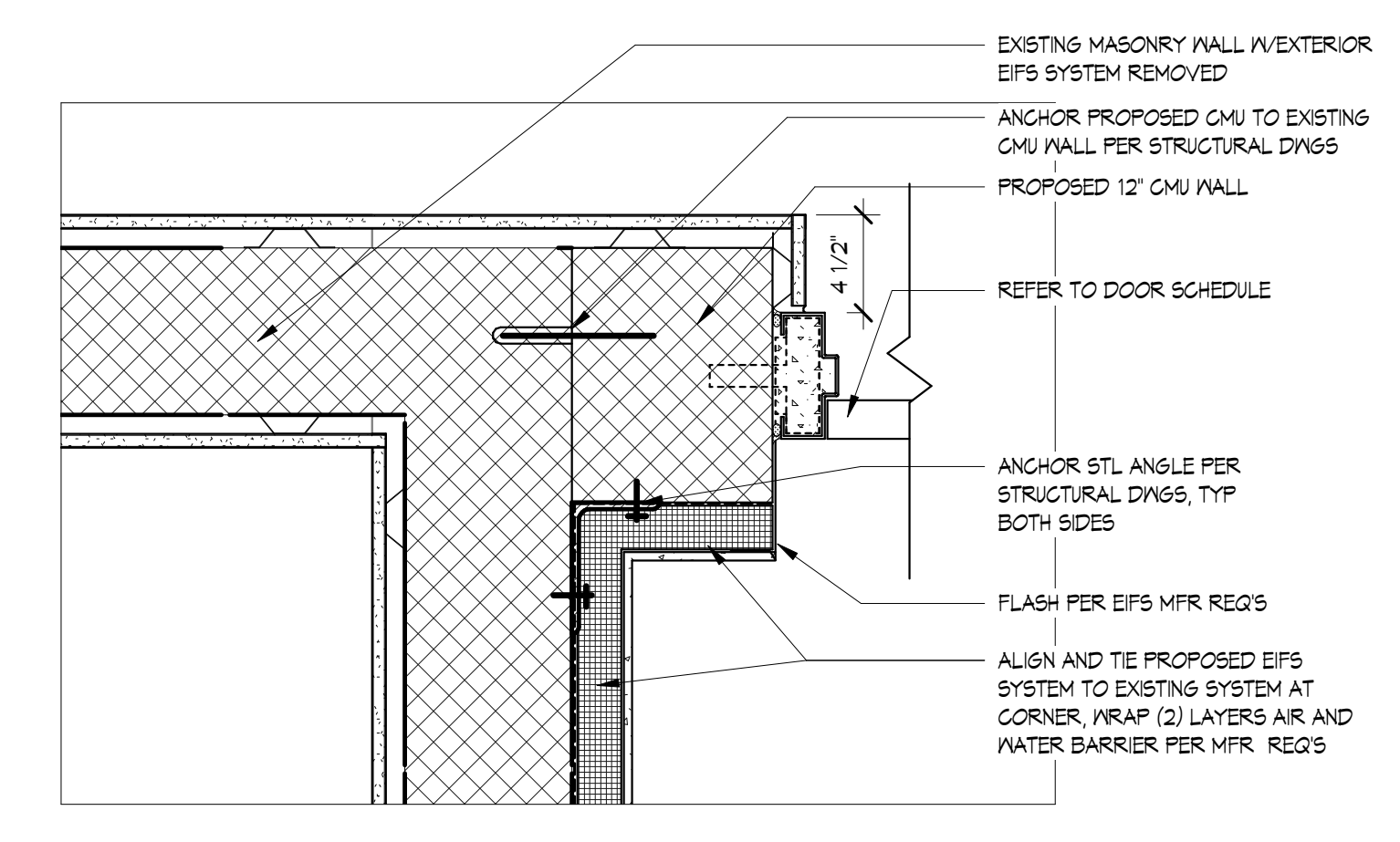
TYPICAL WALL SECTION SCALE 3/4" = 1'-0" 1



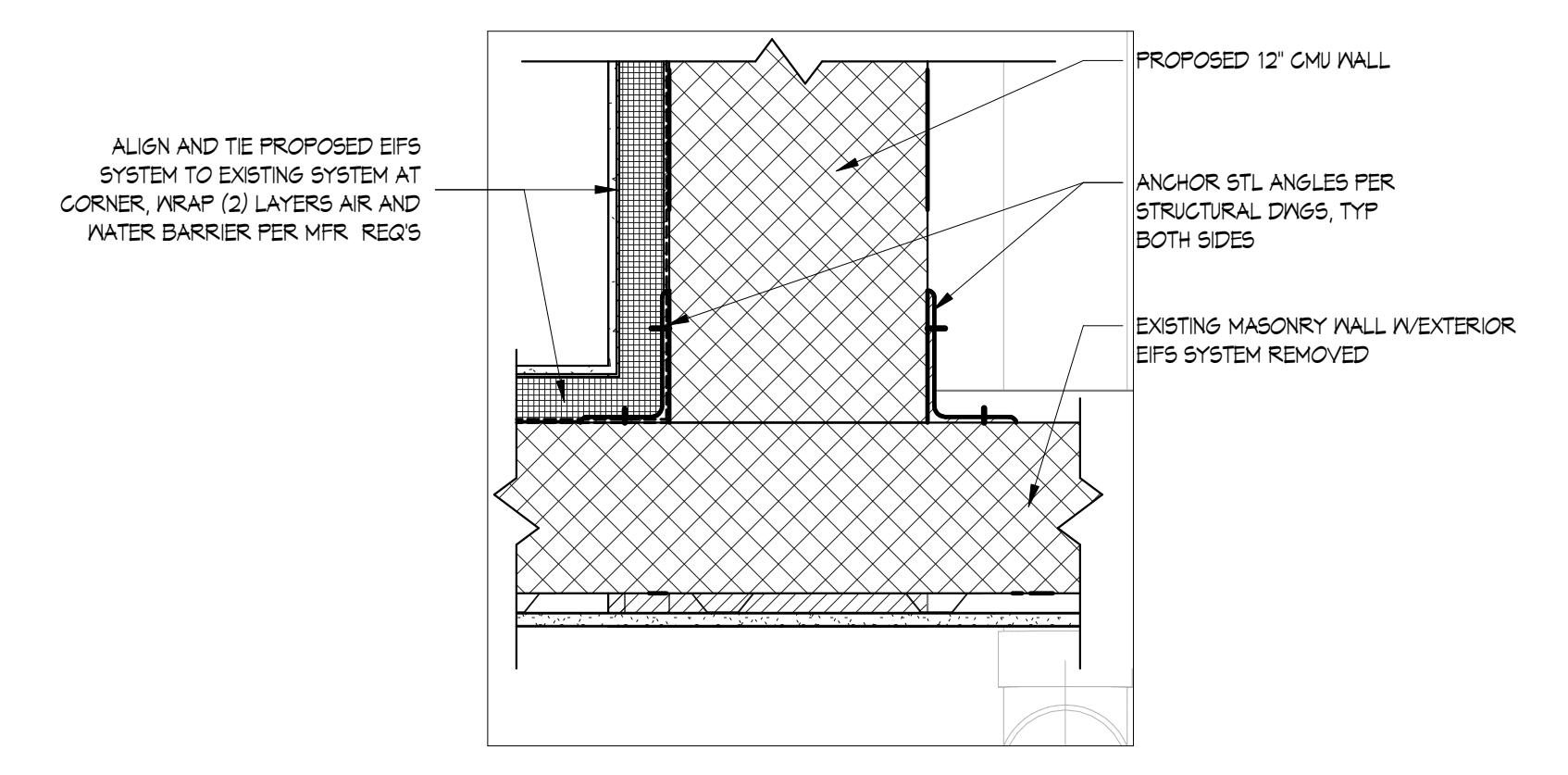
TYPICAL PARAPET DETAIL SCALE 1 1/2" = 1'-0" 5



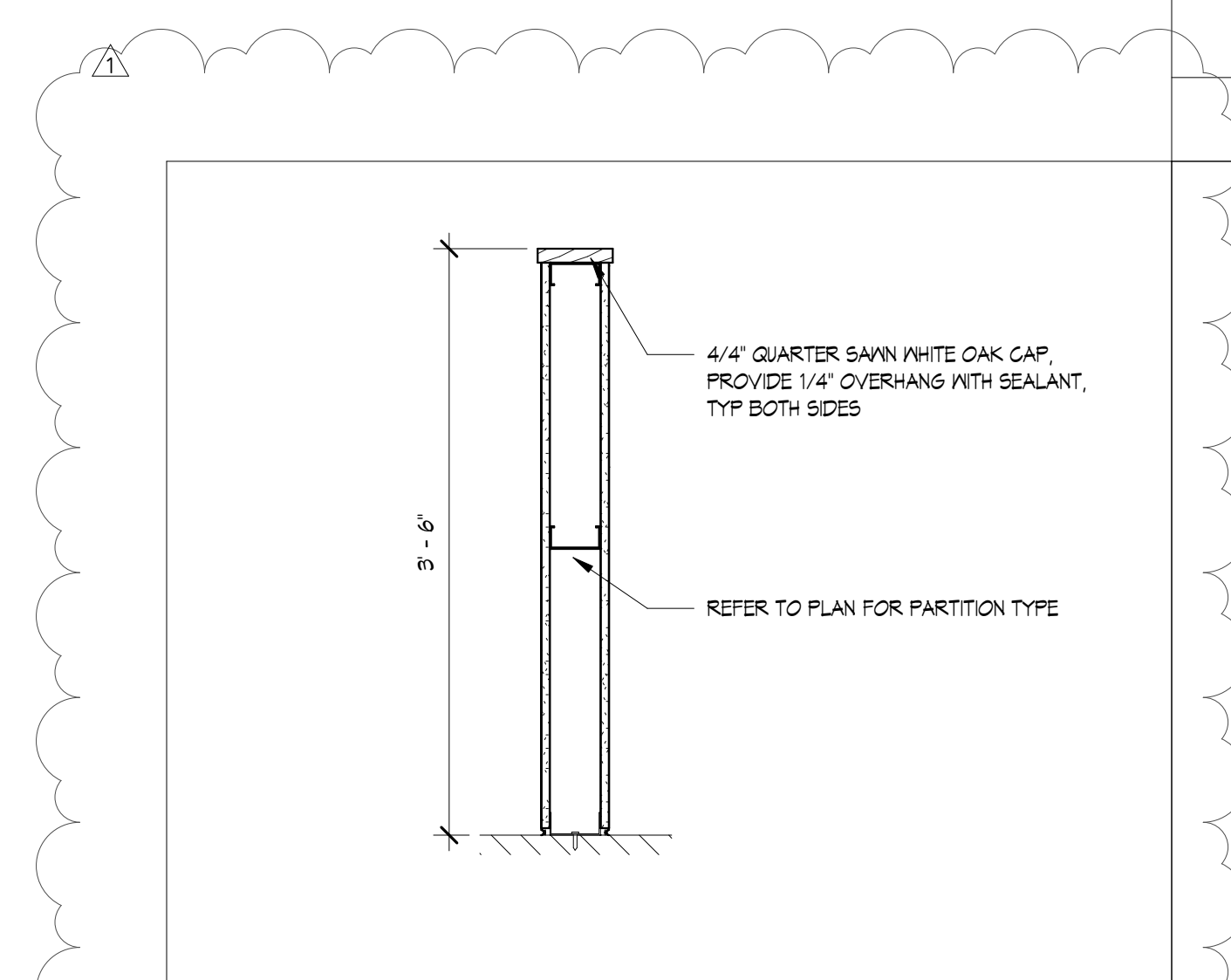
ROOF DRAIN SCALE 1 1/2" = 1'-0" 4



FIRST FLOOR ENLARGED PLAN DETAIL - HORIZONTAL CONNECTION SCALE 1 1/2" = 1'-0" 3



FIRST FLOOR ENLARGED PLAN DETAIL - PERPENDICULAR CONNECTION SCALE 1 1/2" = 1'-0" 2



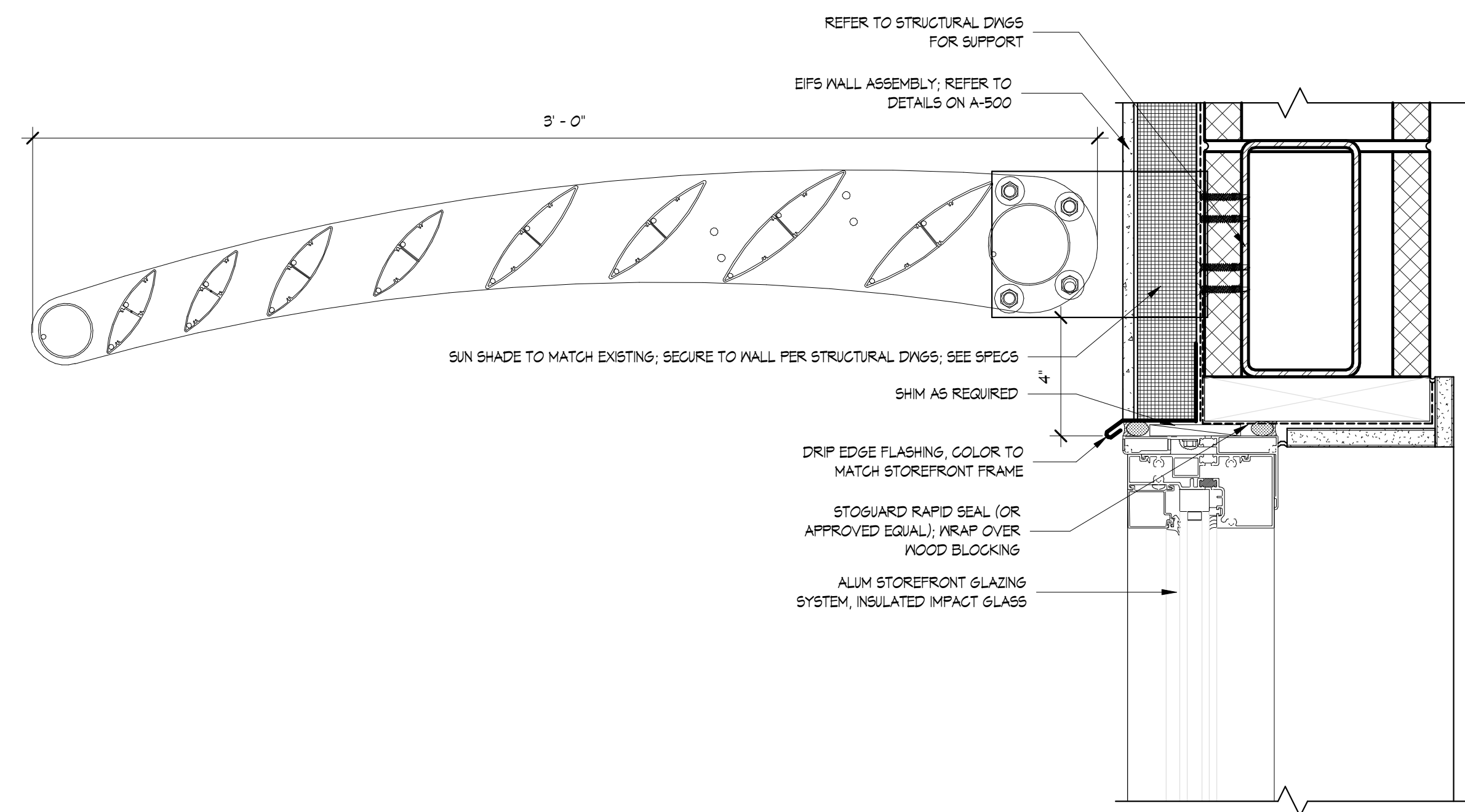
WALL DETAIL SCALE 1" = 1'-0" 6

DOOR SCHEDULE																	
DOOR NO.	ROOM NO.	ROOM NAME	DOOR							FRAME				HEAD DETAIL	JAMB DETAIL	RATING	COMMENTS
			TYPE	WIDTH	HEIGHT	THICKNESS	MATERIAL	FINISH	GLAZING	HARDWARE GROUP	FRAME TYPE	FRAME MATERIAL	FRAME FINISH				
1A	1	WIND TRAINING CENTER CLASSROOM	A	3'-0"	7'-0"	0'-1 3/4"	FG	PT	-	1	HM	PT	H1	J1	-	REUSE EXISTING DOOR/FRAME IF POSSIBLE. OVERHEAD GLAZING DOOR WITH MOTOR OPERATION (EGD). OVERHEAD DOOR CO 825 (INSULATED DOOR) AND SAFETY RAILS. SEE SPECS FOR MORE INFORMATION.	
1B	2	WIND TRAINING CENTER CLASSROOM	A	3'-0"	7'-0"	0'-1 3/4"	HM	PT	-	1	HM	PT	H1 SM	J1	-		
1C	1	WIND TRAINING CENTER	B	10'-0"	8'-0"	0'-3"	-	-	-	-	-	-	H5	J5	-		

ALL EXTERIOR DOORS ARE REQUIRED TO HAVE INTEGRAL FLOOD GATES. REFER TO SPECIFICATIONS FOR MORE INFORMATION.

DOOR SCHEDULE

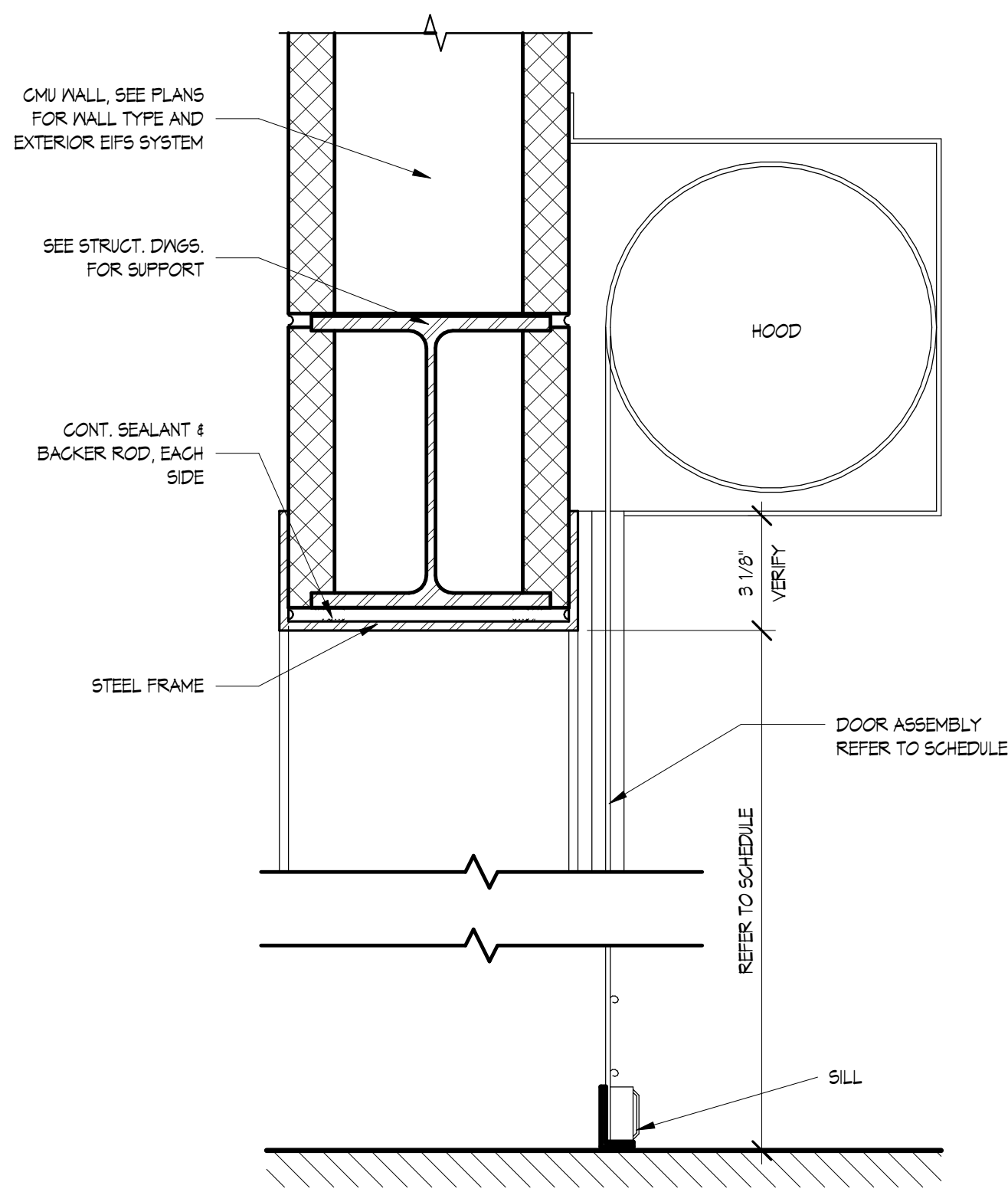
4



WINDOW HEAD DETAIL

SCALE 3" = 1'-0"

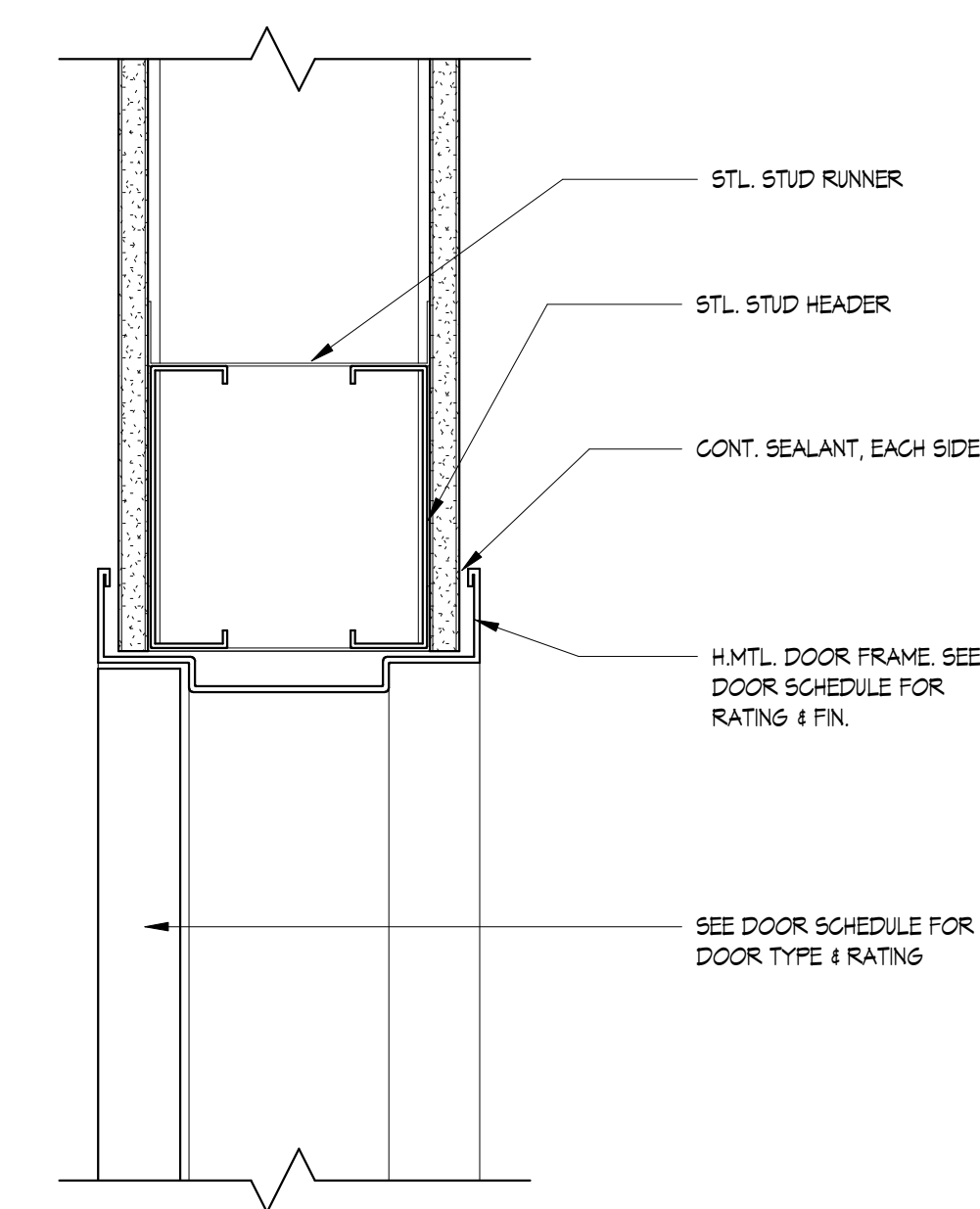
13



HEADER DETAIL H3

SCALE 3" = 1'-0"

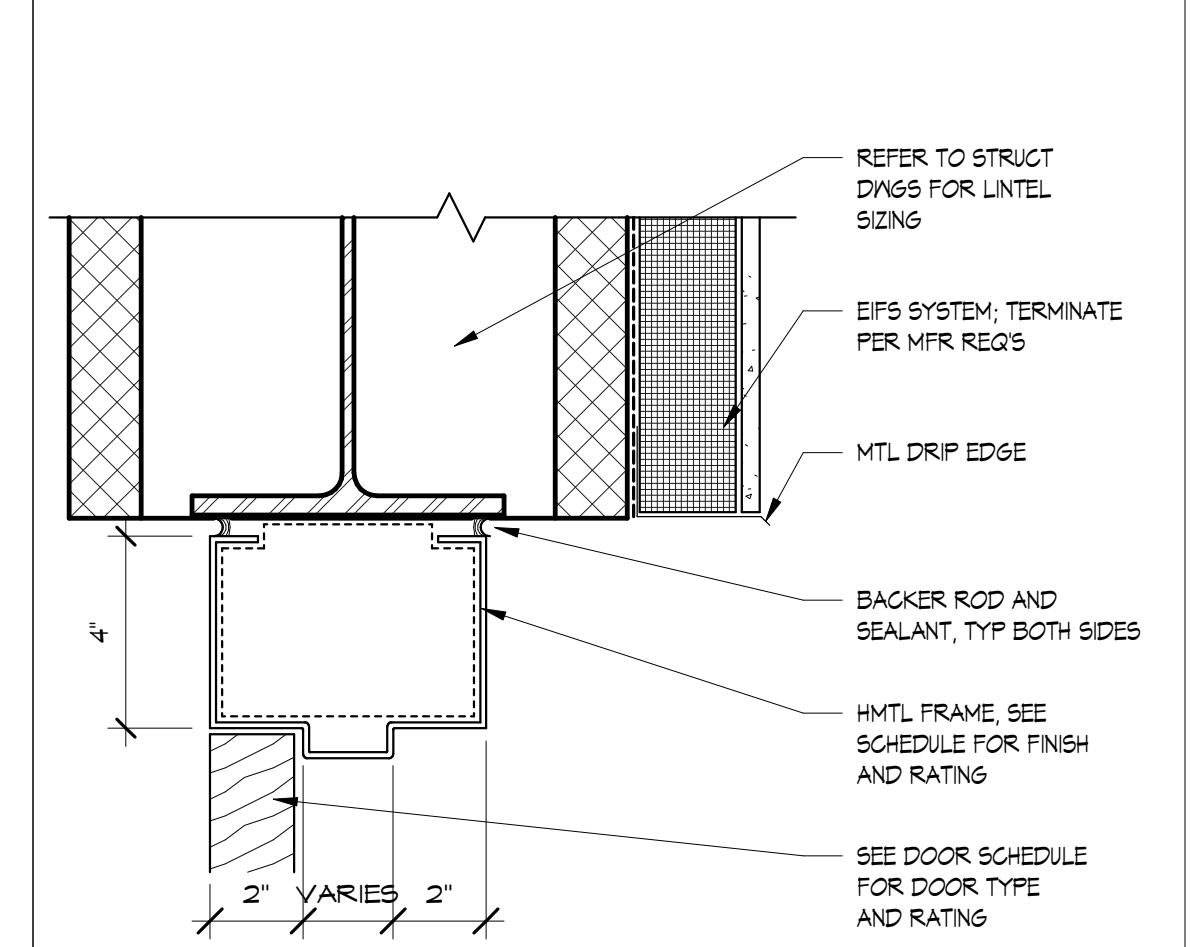
9



HEADER DETAIL H2

SCALE 3" = 1'-0"

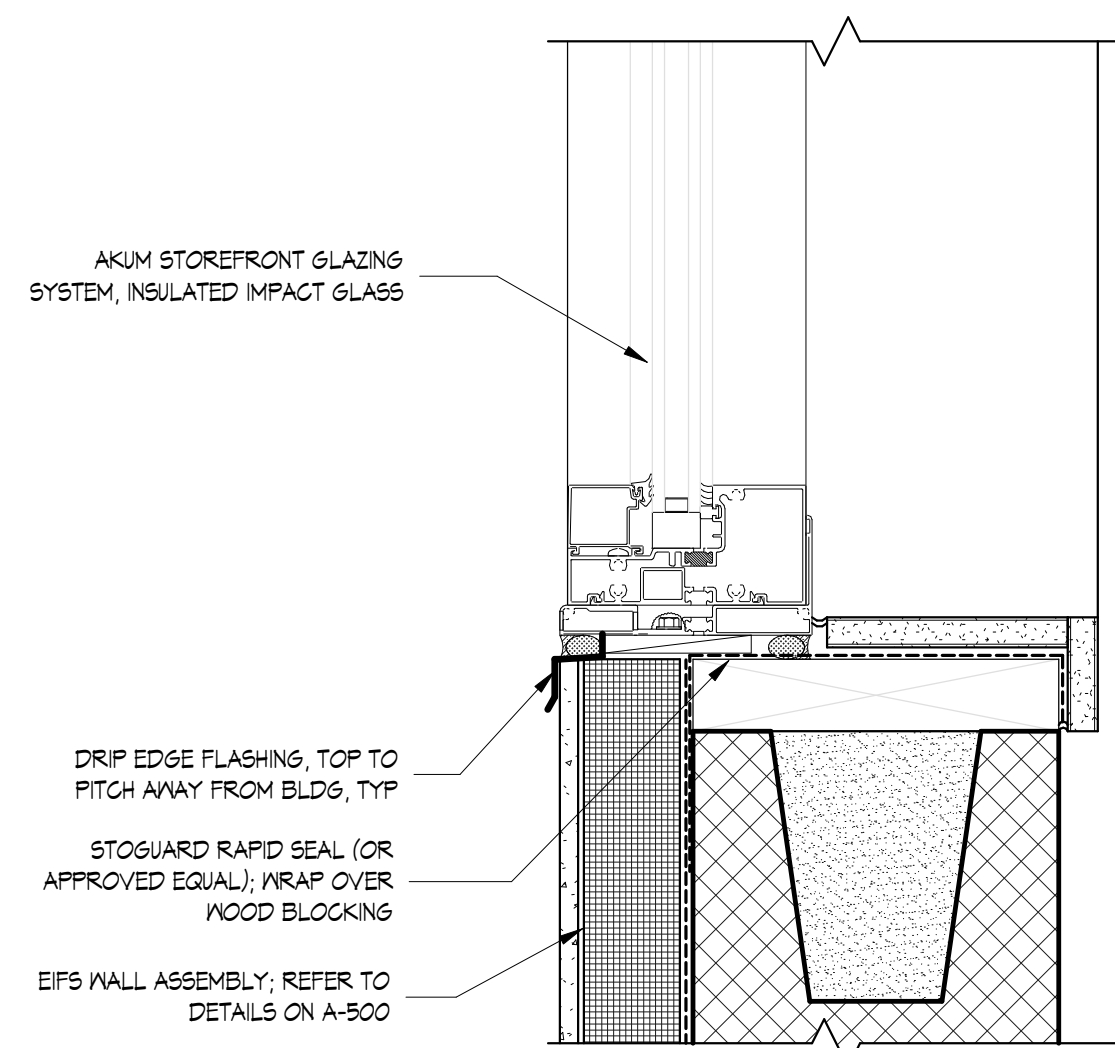
6



HEADER DETAIL H1

SCALE 3" = 1'-0"

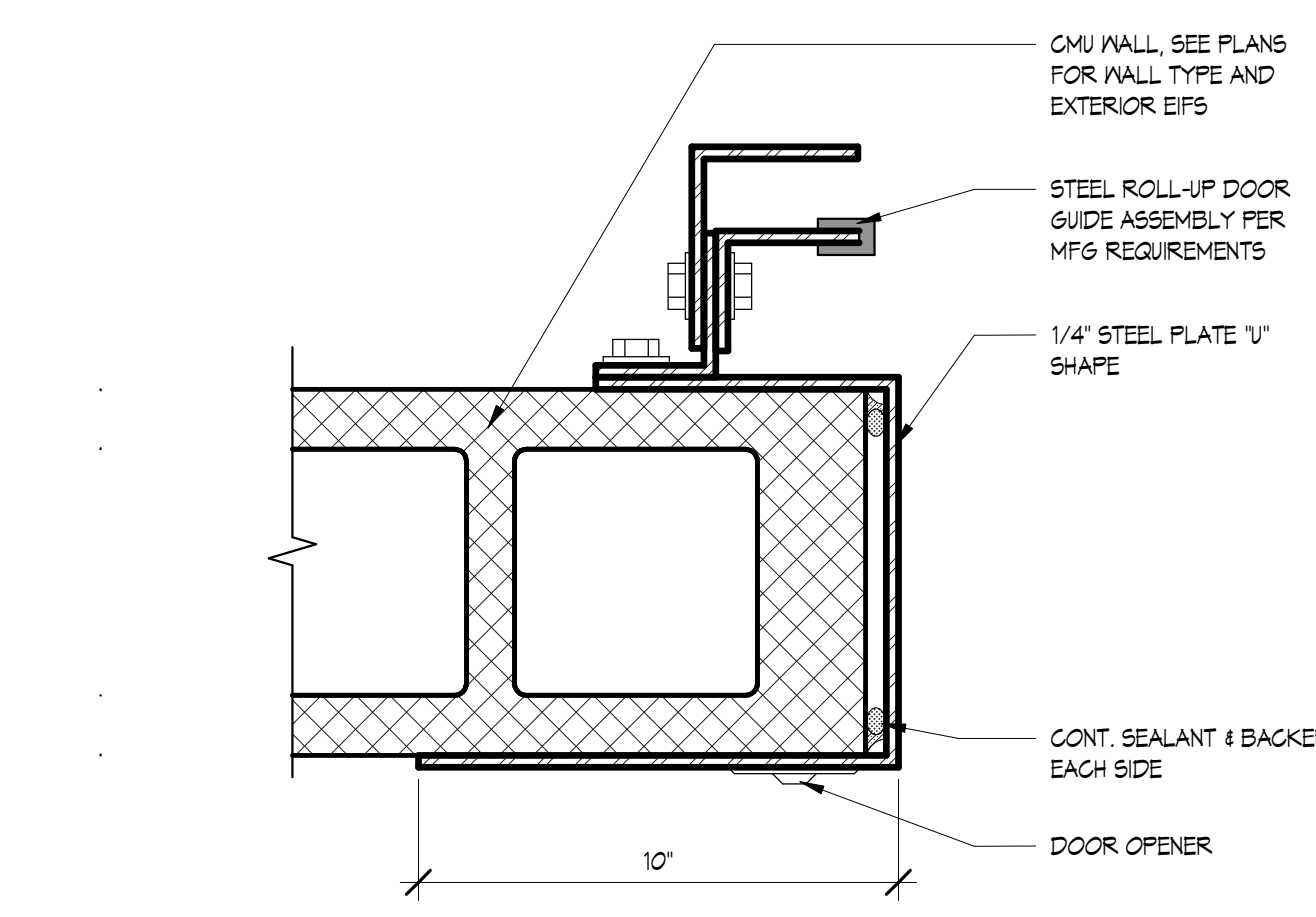
3



WINDOW SILL DETAIL

SCALE 3" = 1'-0"

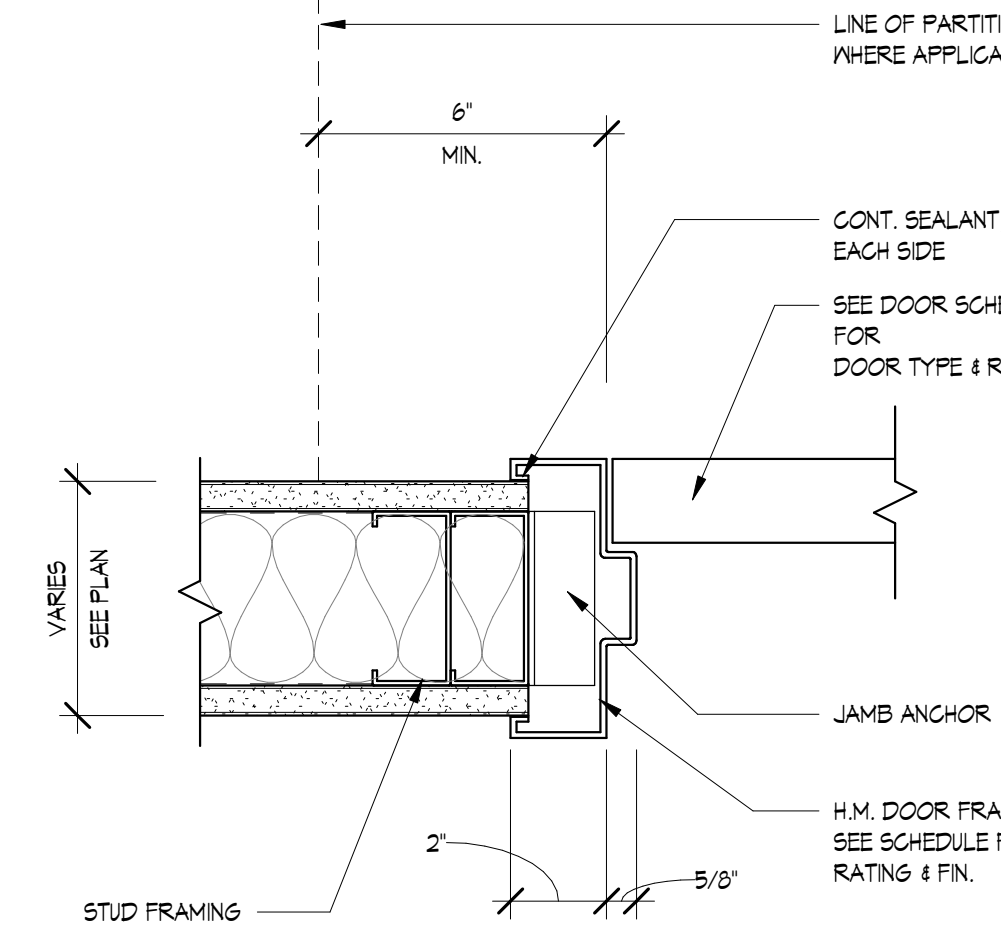
12



JAMB DETAIL J3

SCALE 3" = 1'-0"

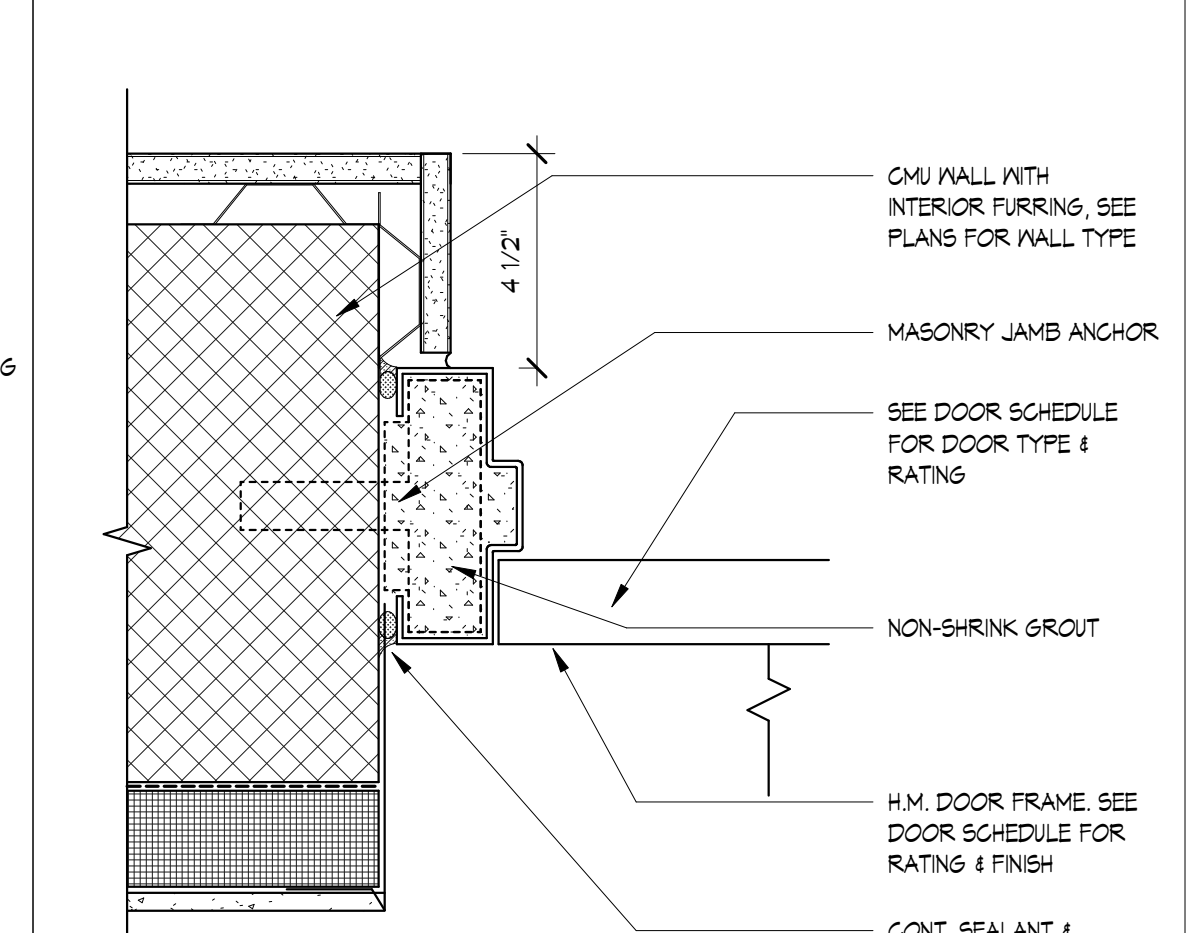
8



JAMB DETAIL J2

SCALE 3" = 1'-0"

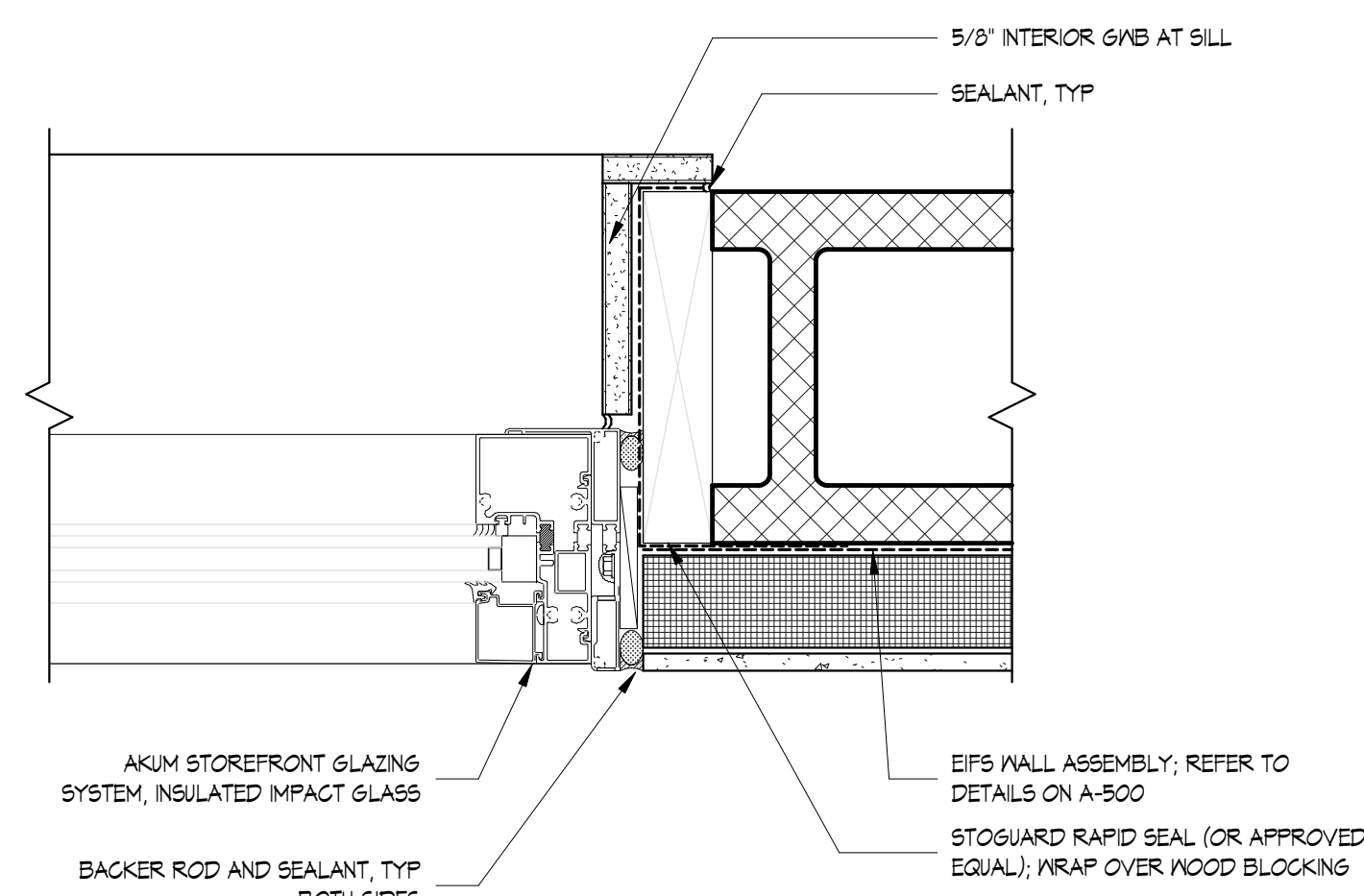
5



JAMB DETAIL J1

SCALE 3" = 1'-0"

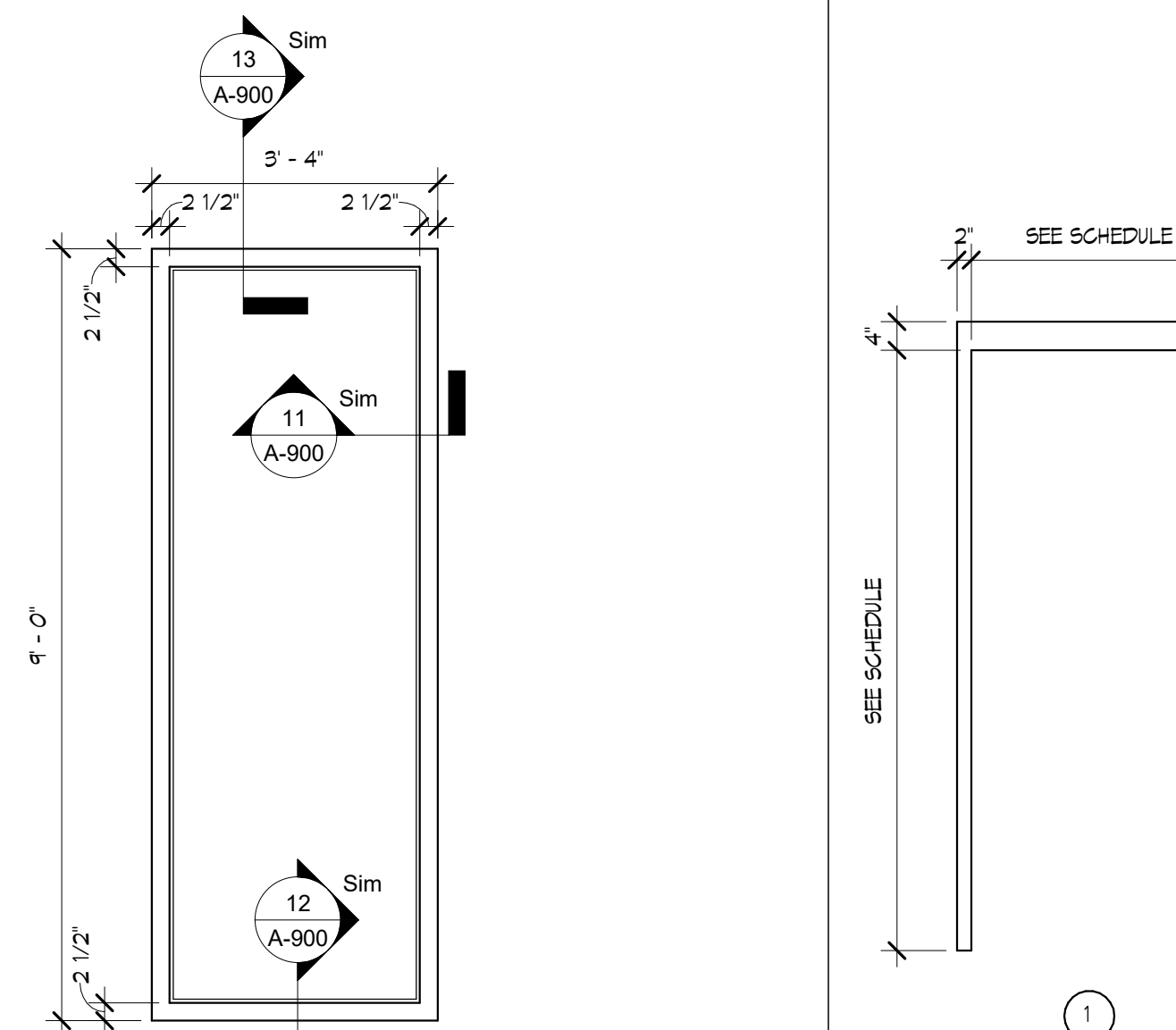
2



WINDOW JAMB DETAIL

SCALE 3" = 1'-0"

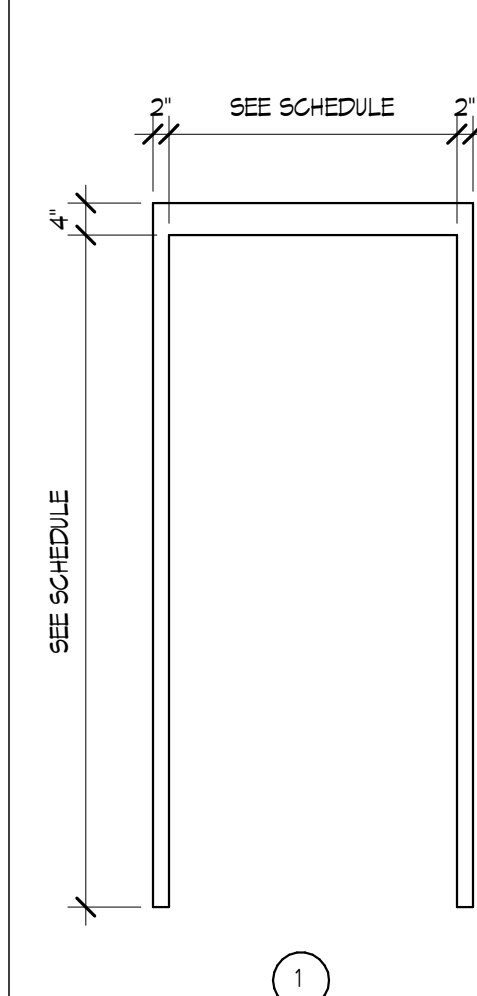
11



WINDOW TYPE 'A'

SCALE 1/2" = 1'-0"

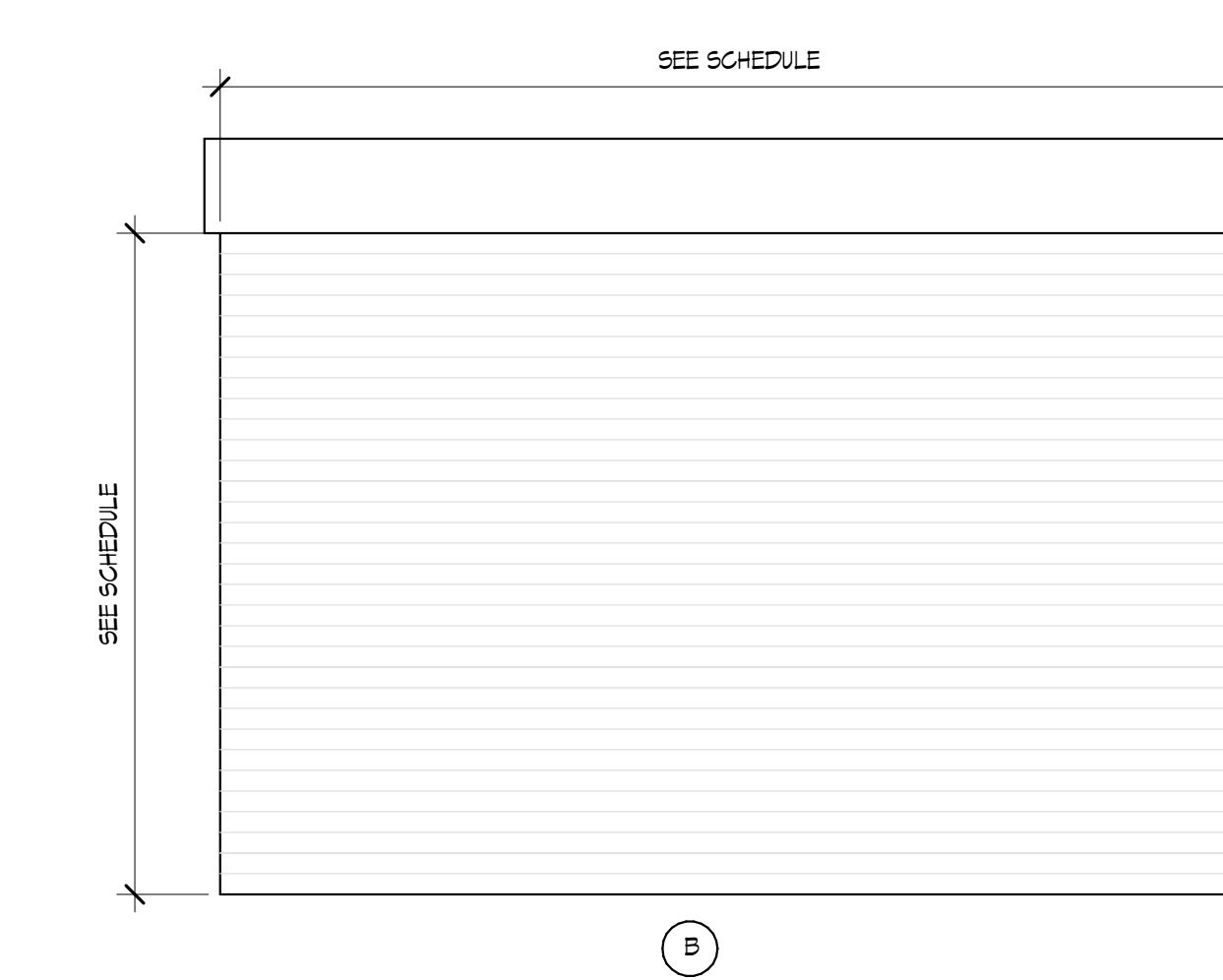
10



DR FRAME

SCALE 1/2" = 1'-0"

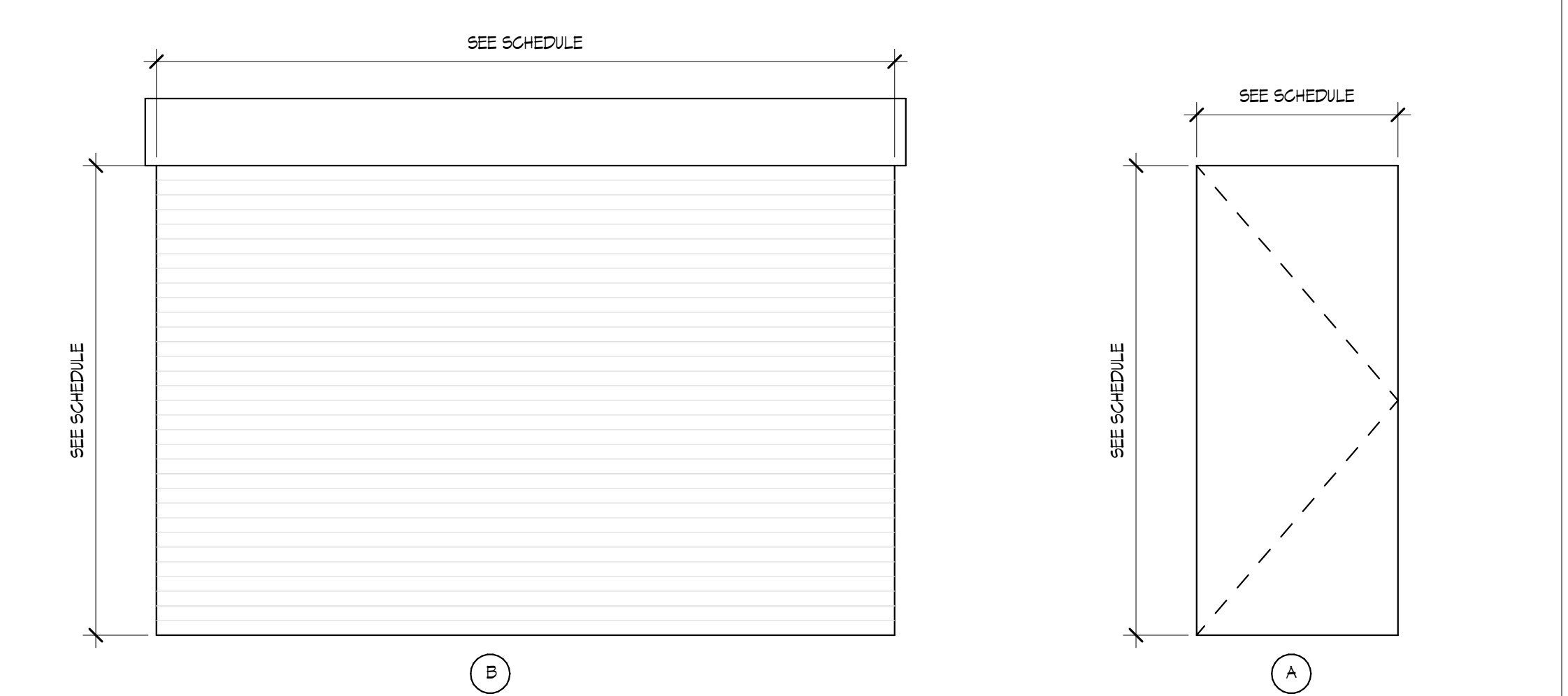
7



DOOR TYPES

SCALE 1/2" = 1'-0"

1



Thomas J. Sykes, A.I.A., P.P.
Founding Principal
William A. Salerno, A.I.A., P.P.
Founding Principal
Mark Petrella, A.I.A.
Principal
Kimberly McCarron, NCARB
Principal
John M. DeRiche III, R.A., A.I.A., NCARB
Principal

Thomas J. Sykes - New Jersey License # 21A00762900

Offshore Wind Safety Center -
Training Room
1535 Bacharach Blvd, Atlantic
City, NJ 08401

CONSTRUCTION DOCUMENTS
10.27.2021

REVISIONS

NO.	DATE	DESCRIPTION
1	11.17.21	ADDED NUM NO 1

DRAWING TITLE:
DOOR SCHEDULE, WINDOW
SCHEDULE, AND DETAILS

DRAWN BY: Author
REVIEWED BY: Checker
PROJECT NO.

DRAWING NO.
A-900