

ELECTRICAL GENERAL NOTES:

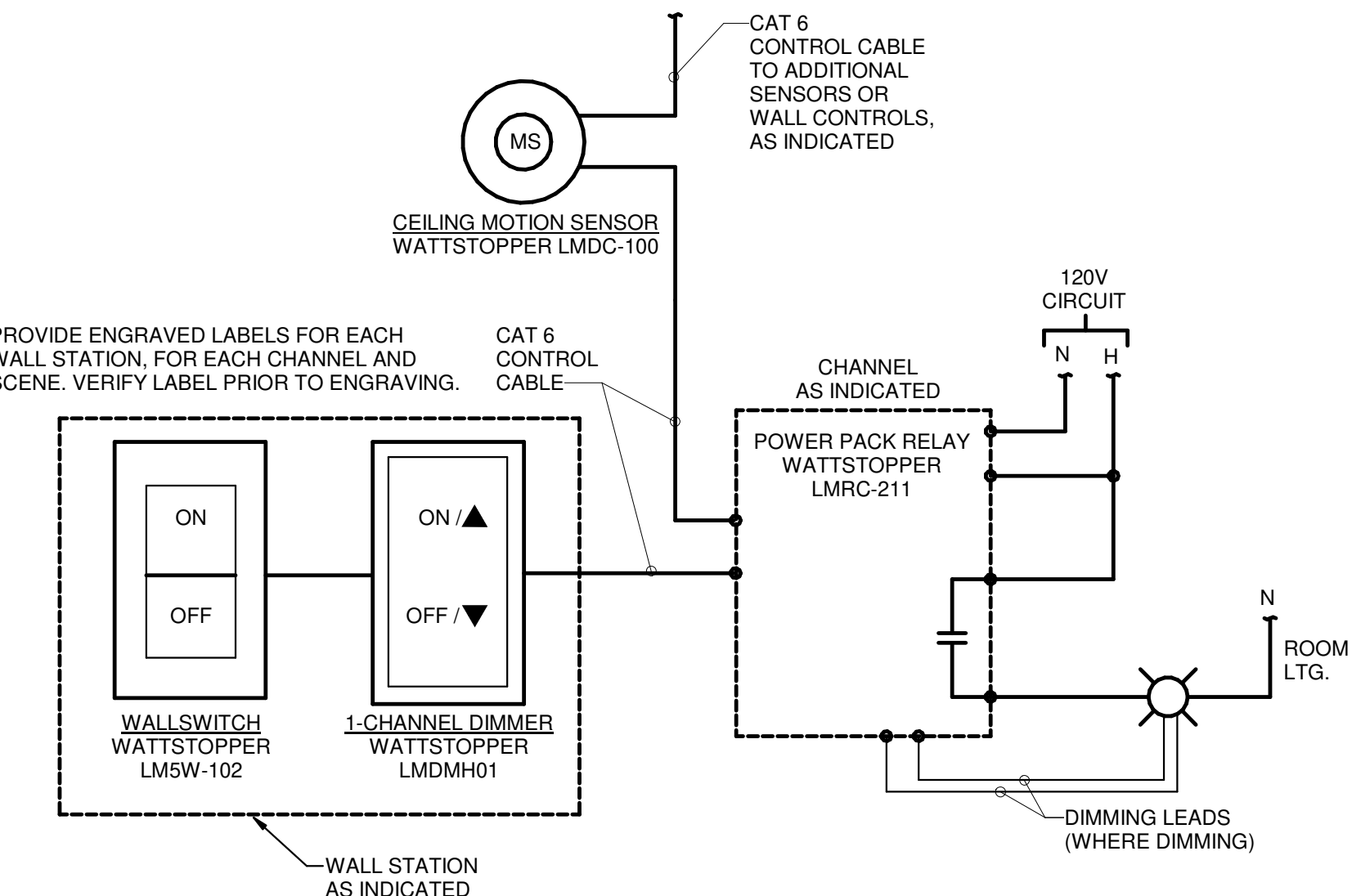
- THE REMOVAL PLAN DRAWINGS SHALL SERVE TO AD THE CONTRACTOR IN HIS EVALUATION OF THE EXTENT OF REMOVALS, BUT SHALL NOT BE HELD TO BE ALL INCLUSIVE.
- THE CONTRACTOR SHALL BE RESPONSIBLE FOR VISITING THE BUILDING AND SITE TO BECOME FAMILIAR WITH THE EXISTING CONDITIONS, VERIFY SIZE, LOCATION, AND USAGE OF UTILITIES AND EQUIPMENT PRIOR TO REMOVAL.
- FOR FURTHER INFORMATION WITH REGARD TO THE EXTENT OF REMOVALS, SEE NEW CONSTRUCTION PLANS AND ARCHITECTURAL PLANS WHICH ILLUSTRATE THE NEW CONSTRUCTION.
- ALL EQUIPMENT REMOVED FOR RELOCATION SHALL BE REMOVED IN SUCH A MANNER THAT REUSE IS POSSIBLE.
- PATCH ALL OPENINGS IN WALLS, FLOORS, AND CEILINGS WHERE REMOVAL OF EQUIPMENT OR DEVICES CREATES SUCH OPENINGS. PATCH OPENINGS TO MATCH EXISTING.
- IF PORTIONS OF CIRCUITS SERVING EQUIPMENT TO REMAIN MUST BE RELOCATED OR REMOVED DUE TO OTHER REMOVAL OR DUE TO INTERFERENCE WITH NEW EQUIPMENT INSTALLATION, THE CIRCUITS SHALL BE MODIFIED IN SUCH A MANNER WHICH WILL ENSURE THE PROPER OPERATION OF THE EQUIPMENT AFTER CONSTRUCTION IS COMPLETE. USE THE SAME TYPE OF CONDUCTOR AND SAME CONDUIT SIZE AS EXISTING UNLESS OTHERWISE NOTED.
- IF WALLS, CEILINGS, FLOORS, OR EQUIPMENT ARE REMOVED, OR OTHER REMOVAL OCCURS, WHICH EXPOSES CIRCUITS TO REMAIN, THE CIRCUITS SHALL BE RELOCATED OR MODIFIED IN SUCH A MANNER WHICH SHALL ENSURE CONTINUED OPERATION OF THE CIRCUIT. EXISTING CONDUITS EXPOSED DURING REMOVALS WHICH REMAIN TO SERVE EQUIPMENT, SHALL BE RE-SUPPORTED IN ACCORDANCE WITH THE REQUIREMENTS FOR RACEWAY INSTALLATION IN THE SPECIFICATIONS.
- CONTRACTOR SHALL BE RESPONSIBLE FOR ALL REMOVALS REQUIRED FOR THE INSTALLATION OF NEW WORK, WHETHER OR NOT IT IS SPECIFICALLY INDICATED OR NOTED IN THESE DOCUMENTS.
- ALL EQUIPMENT INDICATED AS CROSS-HATCHED, OR NOTED, SHALL BE DISCONNECTED AND REMOVED.
- ALL CONDUIT RUNS TO REMOVED EQUIPMENT OR DEVICES SHALL BE COMPLETELY REMOVED BACK TO SOURCE INCLUDING ALL HANGERS, BEAM CLAMPS, MISCELLANEOUS SUPPORTS, AND WIRING, UNLESS WIRING IS REQUIRED TO SERVE EXISTING EQUIPMENT TO REMAIN.
- ALL WIRING DEVICES TO BE REMOVED SHALL BE REMOVED COMPLETELY INCLUDING OUTLET BOX.
- ALL DEVICES, FIXTURES, EQUIPMENT, AND MATERIAL DETERMINED BY THE OWNER TO BE SALVAGEABLE SHALL REMAIN THE PROPERTY OF THE OWNER AND STORED AT THE LOCATION ON THE PREMISES DESIGNATED BY THE OWNER. CONTRACTOR SHALL BE RESPONSIBLE FOR THE DISPOSAL OF ALL OTHER ELECTRICAL EQUIPMENT WHICH IS DISCONNECTED AND REMOVED DURING DEMOLITION, UNLESS NOTED OTHERWISE.
- REMOVE ALL ABANDONED ELECTRICAL EQUIPMENT, WIRING & CONDUIT WITH PROJECT AREA.
- PROVIDE ALL TEMPORARY EGRESS EXIT LIGHTING FIXTURES AS REQUIRED DURING CONSTRUCTION.
- ELECTRICAL CONTRACTOR SHALL BE RESPONSIBLE FOR REMOVING & REPLACING ACoustICAL LAY-IN CEILING FOR ROUTING OF FEEDERS AND COMMUNICATION CABLEING, UNLESS SPECIFICALLY NOTED OTHERWISE OR SHOWN ON ARCHITECTURAL DRAWINGS. ALL DAMAGED TILE SHALL BE REPLACED WITH NEW TILE TO MATCH EXISTING.
- COORDINATE CONDUIT ROUTING WITH MECHANICAL CONTRACTOR TO AVOID CONFLICTS WITH EQUIPMENT AND EQUIPMENT CLEARANCES.
- SEAL AROUND ALL NEW AND EXISTING WALL PENETRATIONS WITH FIRE STOPPING.
- FINAL CONNECTION TO ALL CEILING MOUNTED DEVICES SHALL BE MADE WITH FLEX CONDUIT.
- COORDINATE LIGHTING FIXTURE LOCATIONS WITH ARCHITECTURAL REFLECTED CEILING PLAN.
- PROVIDE SYNC MODULES TO SYNCHRONIZE EXISTING STROBES WITH NEW.

REMOVAL KEYNOTES:

- REMOVE CIRCUIT SERVING LIGHT FIXTURE IN SUCH A MANNER THAT IT MAY BE REUSED TO SERVE NEW FIXTURES. EXTEND AND MODIFY EXISTING CIRCUIT AS NEEDED USING SAME GAUGE AND TYPE WIRE AS EXISTING.
- REMOVE EXISTING CEILING MOUNTED DEVICES AS REQUIRED. REMOVE IN SUCH A MANNER THAT IT MAY BE REINSTALLED IN NEW CEILING. EXTEND AND MODIFY EXISTING CIRCUIT AS NEEDED USING SAME GAUGE AND TYPE WIRE AS EXISTING.
- DISCONNECT AND ALL ASSOCIATED HARDWARE SERVING MECHANICAL UNIT TO BE REMOVED COMPLETE. REMOVE CIRCUIT FEEDING MECHANICAL UNIT BACK TO PANEL "4" IN SUCH A MANNER THAT THE EXISTING BREAKER SERVING UNIT CAN BE REUSED TO SERVE NEW UNIT.
- CEILING MOUNTED PROJECTOR AND ALL ASSOCIATED HARDWARE TO BE REMOVED AND TURNED OVER TO OWNER.
- DISCONNECT EXISTING CIRCUIT SERVING ROOF TOP EXHAUST FAN IN SUCH A MANNER THAT THE CIRCUIT MAY BE REUSED. EXTEND AND MODIFY EXISTING CIRCUIT USING SAME GAUGE AND TYPE WIRE AS NEEDED TO POWER NEW EXHAUST FAN.

NEW WORK KEYNOTES:

- REINSTALL EXISTING CEILING MOUNTED DEVICES INTO NEW CEILING GRID. EXTEND AND MODIFY CIRCUIT AS NEEDED USING SAME GAUGE AND TYPE WIRE AS EXISTING.
- RECONNECT EXISTING CIRCUIT TO NEW ROOF EXHAUST FAN USING SAME GAUGE AND TYPE WIRE AS EXISTING.
- PROVIDE DUCT MOUNTED SMOKE DETECTOR OR CONTACT DETECTOR TO EXISTING FIRE ALARM SYSTEM. ACTIVATION OF DETECTOR SHALL SOUND GENERAL ALARM OUTLET UNIT. PROVIDE ALL WIRING AND HARDWARE AS NOTED.
- PROVIDE (2) COMPARTMENT SURFACE RACEWAY, LEGRAND WIREMOLD MODEL 540 OR EQUAL, MOUNT 18" A.F.F. TO BOTTOM. PROVIDE DOUBLE DUPLEX RECEPTACLE AND OUTLET BOX FOR DATA.



5 LOW VOLTAGE LIGHTING CONTROL DETAIL - POWER PACK
SCALE: 12" = 1'-0"

TYPE	DESCRIPTION	MANUFACTURER	SERIES	LAMP		BALLAST / DRIVER	VOLTAGE	MOUNTING
				TYPE	LUMENS			
A	2'x4' LED FLAT PANEL FIXTURE WITH LENS, 3500K, 50W, MINIMUM 10% DIMMING	RAB	EXPANF2X4/D10	LED	5723	50	0-10V, DIMMING TO 1%	LAY-IN
B	2'x4' LED FLAT PANEL FIXTURE WITH LENS, 3500K, 40W, MINIMUM 10% DIMMING	RAB	EXPANF2X4/D10	LED	4763	40	0-10V, DIMMING TO 1%	LAY-IN
C	2'x2' RECESSED LED FLAT PANEL WITH LENS, 3500K, 0-10V DIMMING	RAB	EZPANFA2X2/D10	LED	4800	42	0-10V, DIMMING TO 1%	RECESSED
D	6" DIA LED DOWNLIGHT WITH CLEAR TRIM AND SEMI-SPECULAR FINISH, 4000K, 1500 LUMENS	LITHONIA	EV06SH-35-15-DFR-SMO-MVOLT-EZ1-90CR	LED	1500	14.7	0-10V, DIMMING TO 1%	RECESSED
E	LED SINGLE FACED EXIT LIGHT WITH BLACK DIE-CAST HOUSING/ BRUSHED ALUMINUM FACE AND RED STENCIL LETTERS.	LITHONIA	LES1RW	LED		1.2	--	UNIVERSAL

LIGHTING

- CEILING MOUNTED LIGHTING FIXTURE AS SCHEDULED.
- CEILING OUTLET AND LIGHTING FIXTURE AS SCHEDULED.
- ⊗ CEILING OUTLET AND EXIT LIGHT FIXTURE AS SCHEDULED.
- ⊕ WALL OUTLET AND EXIT LIGHT FIXTURE AS SCHEDULED.
- ↔ ARROWS INDICATE EGRESS EXIT SIGNAGE (CHEVRONS) REQUIRED.
- ⊕ SYMBOL INDICATES FIXTURE TYPE WHEN SHOWN ON LIGHTING PLANS ADJACENT TO FIXTURE.
- LMC LOWER CASE LETTERS AT OUTLETS INDICATES SWITCHING ARRANGEMENT.
- S SINGLE POLE 20A SWITCH, MOUNT 48" A.F.F. TO TOP, UNLESS NOTED OTHERWISE. SUBSCRIPT: MS = VACANCY SENSOR SIMILAR TO WATTSTOPPER DSW-301 SERIES LV = LOW VOLTAGE CONTROLLER SIMILAR TO WATTSTOPPER LSMW-102 SERIES
- ⊕ DIMMER SWITCH 1KW RATED UNLESS NOTED OTHERWISE MOUNT 48" A.F.F. TO TOP UNLESS NOTED OTHERWISE. LV = LOW VOLTAGE CONTROLLER SIMILAR TO WATTSTOPPER LMDM-101 SERIES
- ⊕ CEILING OUTLET AND DUAL TECHNOLOGY MOTION SENSOR FOR LIGHTING CONTROL WITH AUTOMATIC AND MANUAL - ON CONTROL OPERATION, WATTSTOPPER LMDC-100 OR APPROVED EQUAL.
- ⊕ OUTLET BOX MOUNTED MOTION LOW VOLTAGE SENSOR POWER PACK. SENSOR SHALL BE SIMILAR TO WATTSTOPPER LMRC-211

GENERAL DEVICE SUBSCRIPTS

"1,2,3" NUMBER AT OUTLET INDICATES CIRCUIT ARRANGEMENT.
 "GFI" INDICATES GROUND FAULT CURRENT INTERRUPTER DEVICE.
 "EX" INDICATES EXISTING WHEN SHOWN ADJACENT TO SYMBOLS ON LIGHTING, POWER, OR SYSTEMS PLANS.
 "REF" INDICATES REFRIGERATOR.

FIRE ALARM SYSTEM

- ⊕ FIRE ALARM SYSTEM VISUAL UNIT, WALL MOUNT AT 80" A.F.F. TO STROBE.
- ⊕ MANUAL FIRE ALARM ADDRESSABLE PULL STATION, MOUNT 48" A.F.F. TO TOP.
- ⊕ CEILING MOUNTED SMOKE DETECTOR. SUBSCRIPT R = WITH RELAY BASE.
- ⊕ FIRE ALARM AUDIO UNIT, MOUNT 80" A.F.F. TO BOTTOM, OR 6" BELOW CEILING TO TOP, WHICH IS LOWER. SUBSCRIPT C: CEILING MOUNT
- ⊕ ADDRESSABLE SMOKE DETECTOR, DUCT TYPE. PROVIDE REMOTE TEST SWITCH IN READILY ACCESSIBLE LOCATION. ACTIVATION OF DETECTOR SHALL CAUSE FAN TO SHUT-DOWN.

POWER

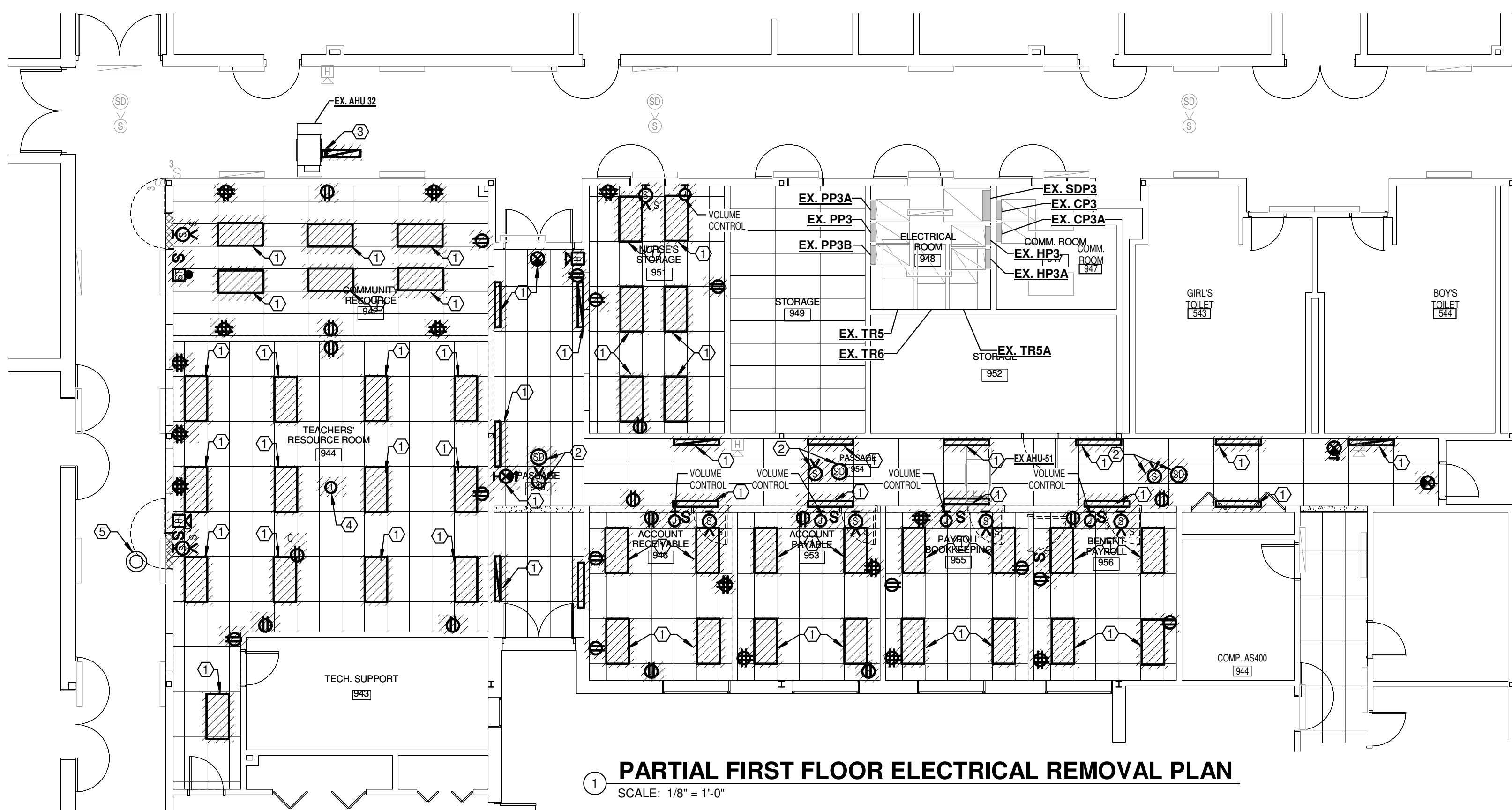
- CEILING OR FLOOR MOUNTED JUNCTION BOX.
- ⊕ WALL OUTLET WITH 20A, 125V DUPLEX RECEPTACLE, MOUNT 18" A.F.F. TO BOTTOM, UNLESS NOTED OTHERWISE.
- ⊕ WALL OUTLET WITH 20A, 125V DOUBLE DUPLEX (QUADRAPLEX) RECEPTACLE, MOUNT AT 18" A.F.F. TO BOTTOM UNLESS NOTED OTHERWISE.
- ⊕ 208Y/120V SURFACE MOUNTED PANELBOARD. DASH LINE INDICATES N.E.C. CLEARANCE.
- ⊕ 480Y/277V SURFACE MOUNTED PANELBOARD. DASH LINE INDICATES N.E.C. CLEARANCE.
- ⊕ FUSIBLE DISCONNECT SWITCH, MOUNT 4'-6" A.F.F. TO CENTER, UNLESS NOTED OTHERWISE. DASH LINE INDICATES N.E.C. CLEARANCE.

RACEWAYS

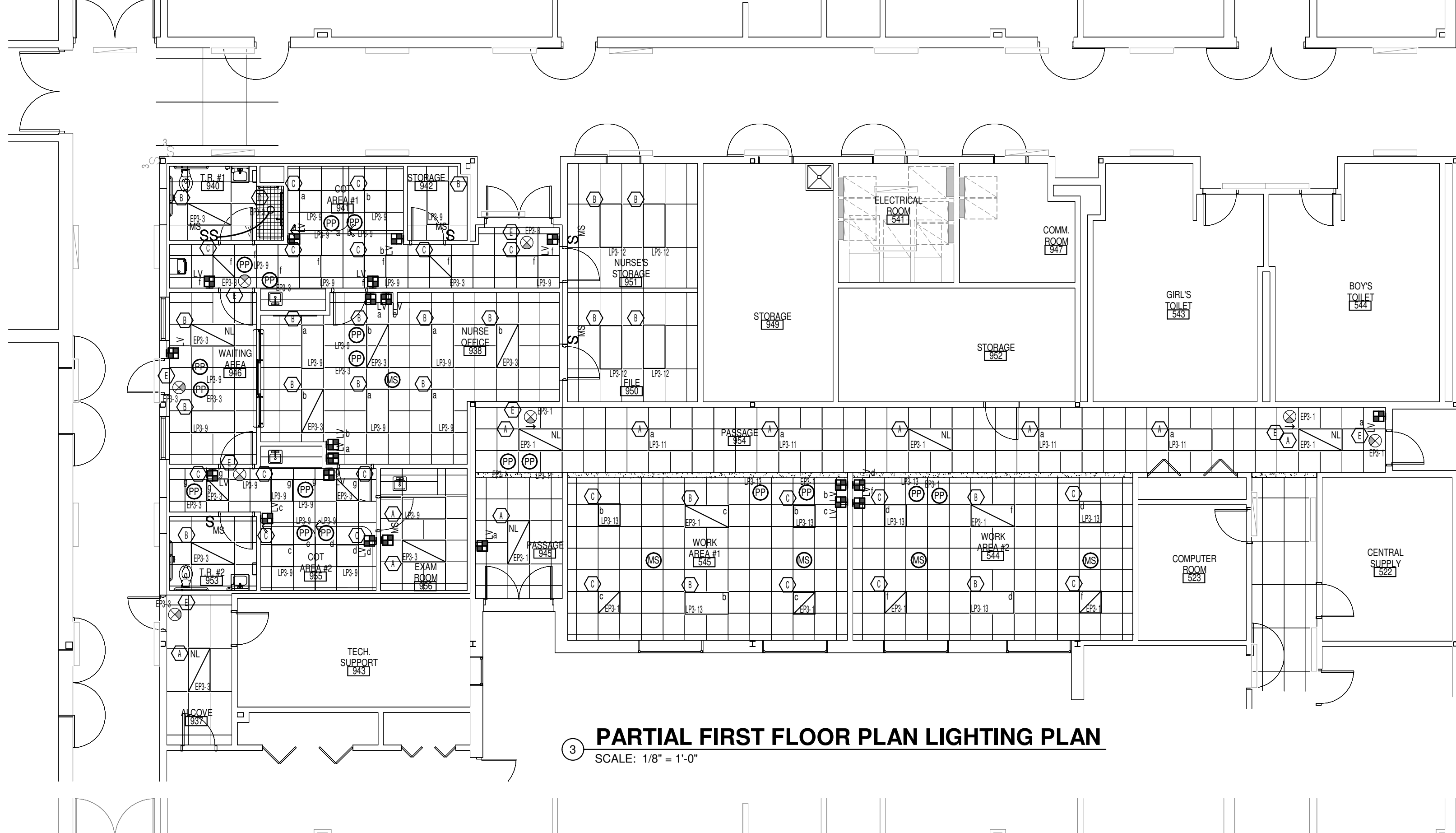
PHASE CONDUCTORS - NEUTRAL - GROUND
 H1A-1.3
 CIRCUIT CONCEALED IN CEILING OR WALL. CROSSBARS INDICATE NUMBER OF CONDUCTORS REQUIRED. CONDUIT NOT SIZED IS 3/4". CONDUCTORS NOT SIZED ARE NO. 12.
 HOMERUN TO PANELBOARD INDICATED. NUMBER OF ARROWHEADS INDICATES CIRCUIT NUMBERS. PREFIX INDICATES PANEL NUMBER.
 EQUIPMENT POINT OF CONNECTION. VERIFY WITH EQUIPMENT PROVIDER AND/OR INSTALLER.

COMMUNICATIONS

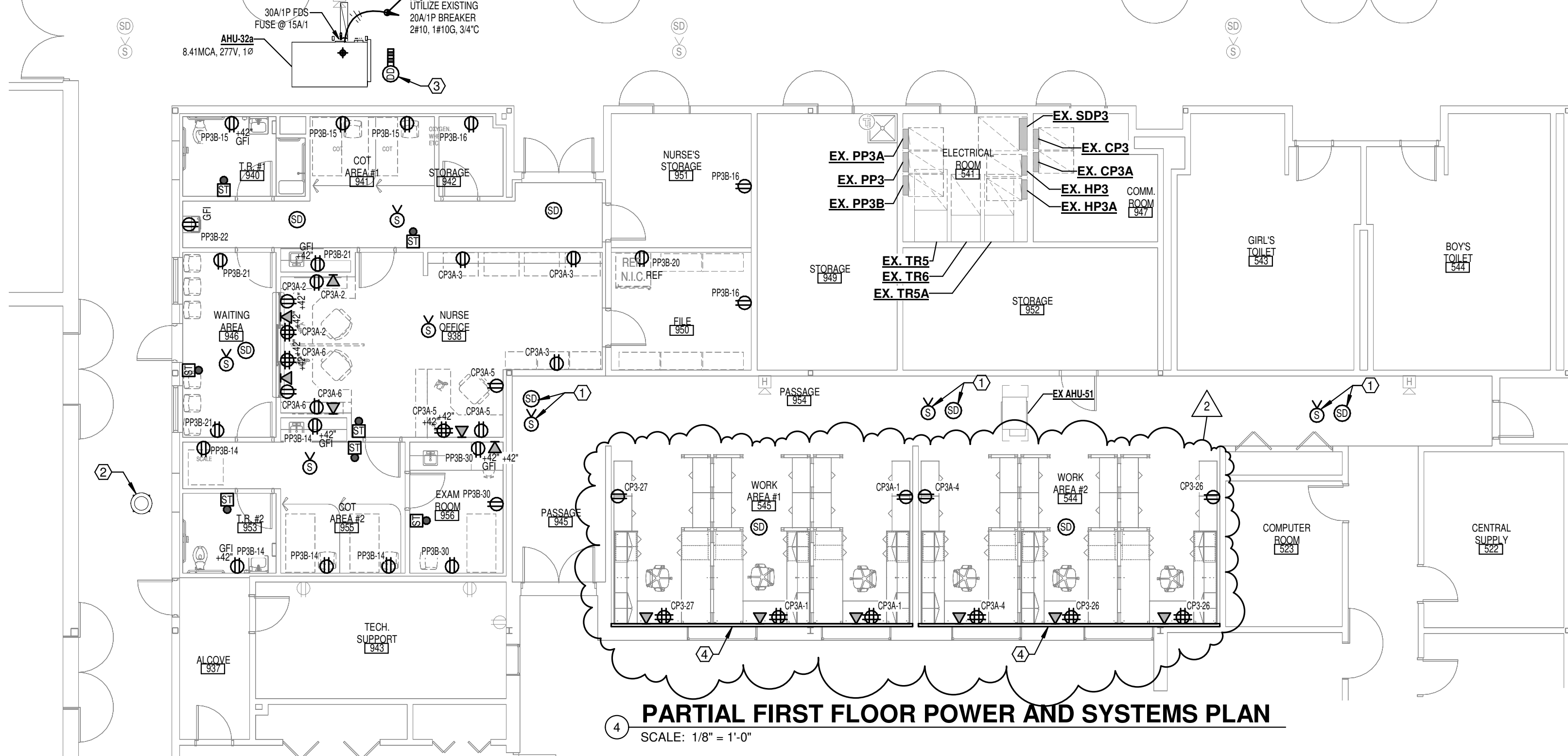
- ⊕ OUTLET BOX IN WALL WITH ONE VOICE JACK AND DEVICE PLATE. PROVIDE 1" CONDUIT FROM OUTLET BOX TO ACCESSIBLE CEILING CAVITY AND BUSH END, MOUNT 18" A.F.F. TO BOTTOM, UNLESS NOTED OTHERWISE.
- ⊕ CEILING MOUNTED INTERCOM SPEAKER. NEW SPEAKERS SHALL MATCH EXISTING SYSTEM.



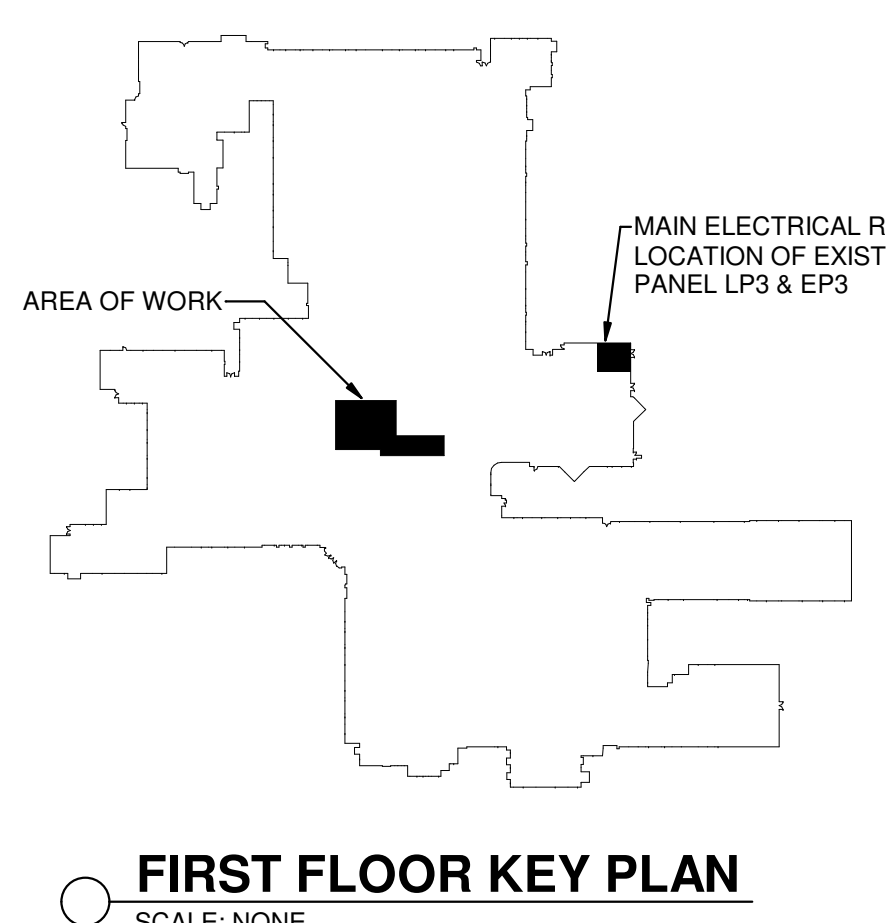
1 PARTIAL FIRST FLOOR ELECTRICAL REMOVAL PLAN
SCALE: 1/8" = 1'-0"



3 PARTIAL FIRST FLOOR PLAN LIGHTING PLAN
SCALE: 1/8" = 1'-0"



4 PARTIAL FIRST FLOOR POWER AND SYSTEMS PLAN
SCALE: 1/8" = 1'-0"



FIRST FLOOR KEY PLAN
SCALE: NONE

RELEASE / REVISION

No.	Date	Description
1	1/24/2024	RELEASED FOR BIDDING
2	05/06/2024	ADDENDUM #1



ALL REPORTS, PLANS, SPECIFICATIONS AND COMPUTER FILES RELATING TO THIS PROJECT ARE THE PROPERTY OF MANDERS MERIGHI PORTADIN FARRELL ARCHITECTS, LLC. STATUTE AND OTHER RESERVED RIGHTS INCLUDING THE COPYRIGHT HEREIN. REPRODUCTION OF THE MATERIAL HEREIN OR SUBSTANTIAL USE WITHOUT WRITTEN PERMISSION OF MANDERS MERIGHI PORTADIN FARRELL ARCHITECTS, LLC VIOLATES THE COPYRIGHT LAWS OF THE UNITED STATES AND WILL BE SUBJECT TO LEGAL PROSECUTION.

© 2018, MANDERS MERIGHI PORTADIN FARRELL ARCHITECTS, LLC



Manders Merighi Portadin Farrell Architects, LLC
 1138 East Chestnut Avenue Vineland, New Jersey 08360
 p. 856.696.9155 | f. 856.696.9080
 www.mmpf.com
 David G. Manders AIA AI-07220
 Lawrence J. Merighi AIA AI-07473
 Ronald P. Portadin AIA AI-13038
 Peter W. Farrell AIA AI-13618

Project ATLANTIC COUNTY SPECIAL SERVICES SCHOOL
NEW NURSE SUITE & MISC. ALTERATIONS
 4805 NAWAKWA BLVD.
 MAYS LANDING, NJ 08330

Drawing FIRST FLOOR ELECTRICAL PLANS

Scale As indicated
Job 24018
Sheet E1.0
Drawn CAR
Date 04/24/2024