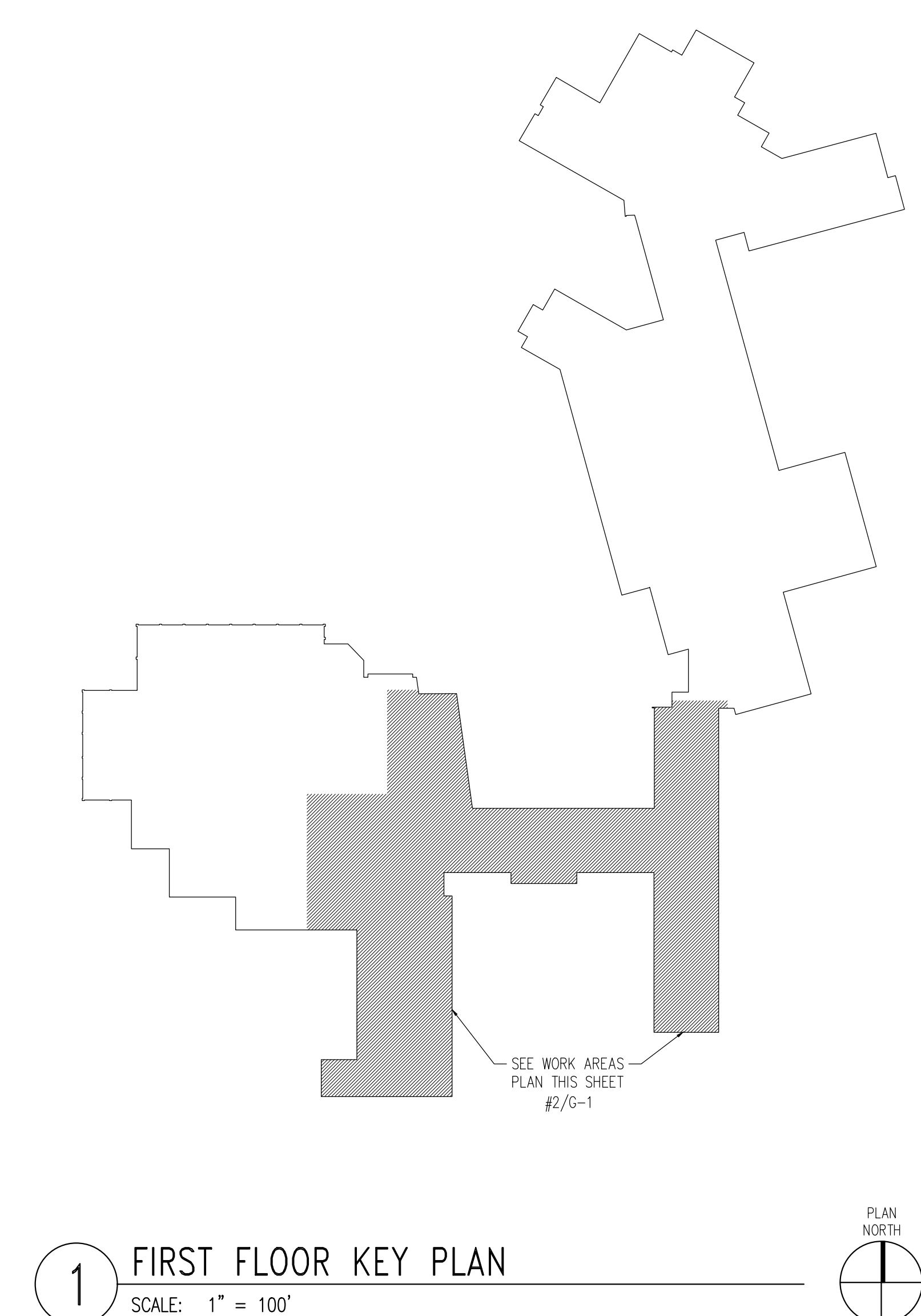


509 Forest Hills Parkway, Bayville, Ocean County, New Jersey
NJDOE Project No. 0770-030-21-1000
TVC Project No. 20-29705

ABATEMENT CONSULTANT:
AHERA CONSULTANTS INC.
 1256 NORTH CHURCH STREET
 MOORESTOWN, NJ 08057
 P. (856) 722-6700 F. (856) 722-0175

CLASSIFICATION OF WORK: REPAIR & RENOVATION



PLAN
NORTH

GENERAL DEMOLITION NOTES (PROJECT NO. 1):

THE FOLLOWING DEMOLITION WORK SHALL BE PERFORMED IN A-WING CORRIDORS:

- REMOVE ADHERED ACOUSTIC TILE FROM PLASTER CEILING IN CORRIDORS.
- REMOVE PLASTER, LATH, AND SECONDARY SUPPORT CHANNELS FROM CEILINGS (MAIN SURFACES CHANGING TO CEILING).
- REMOVE EXISTING LIGHTING FIXTURES, SALVAGE LAMPS AND RETURN TO OWNERS.
- REMOVE EXISTING ACCESS DOORS IN CEILINGS.
- REMOVE CEILING MOUNTED DEVICES, WRAP, PROTECT, AND TEMPORARILY HANG FROM STRUCTURE FOR REUSE IN PROJECT NO. 2.

THE FOLLOWING DEMOLITION WORK SHALL TAKE PLACE IN ADJACENT SPACES:

- SELECTIVE CUTTING & REMOVALS OF PLASTER CEILINGS, LIGHTING FIXTURES, ACCESS DOORS, AND OTHER DEVICES FROM PLASTER CEILING, WALLS, AND FLOORS, ETC.
- SALVAGE CEILING MOUNTED DEVICES FOR REUSE IN PROJECT NO. 2, AS IN CORRIDORS

AREAS HATCHED INDICATE LOCATIONS IMPACTED BY THE WORK OF PROJECTS NO. 1 & NO. 2 PROJECT NO. 1 WORK TO BE COMPLETED UNDER A SEPARATE CONTRACT.

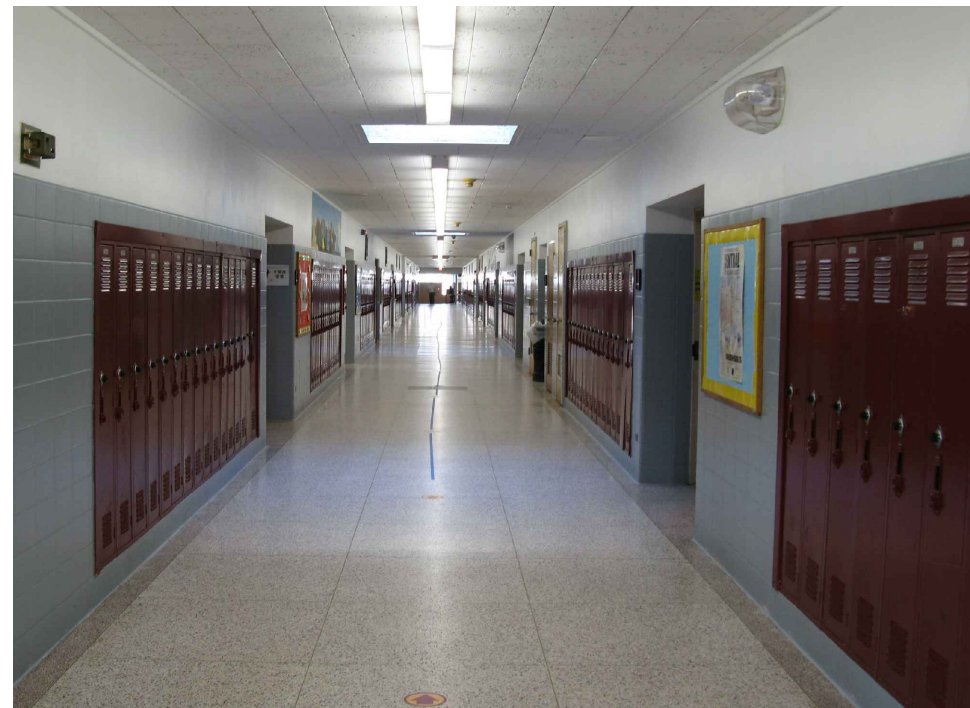
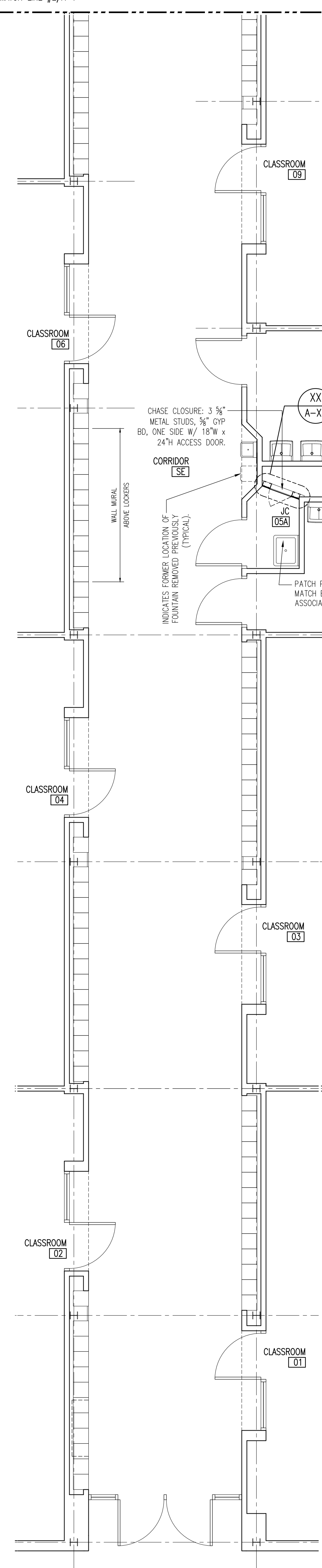
PROJECT NO: 20-29705

509 Forest
Berkley Township
Ocean County
New Jersey

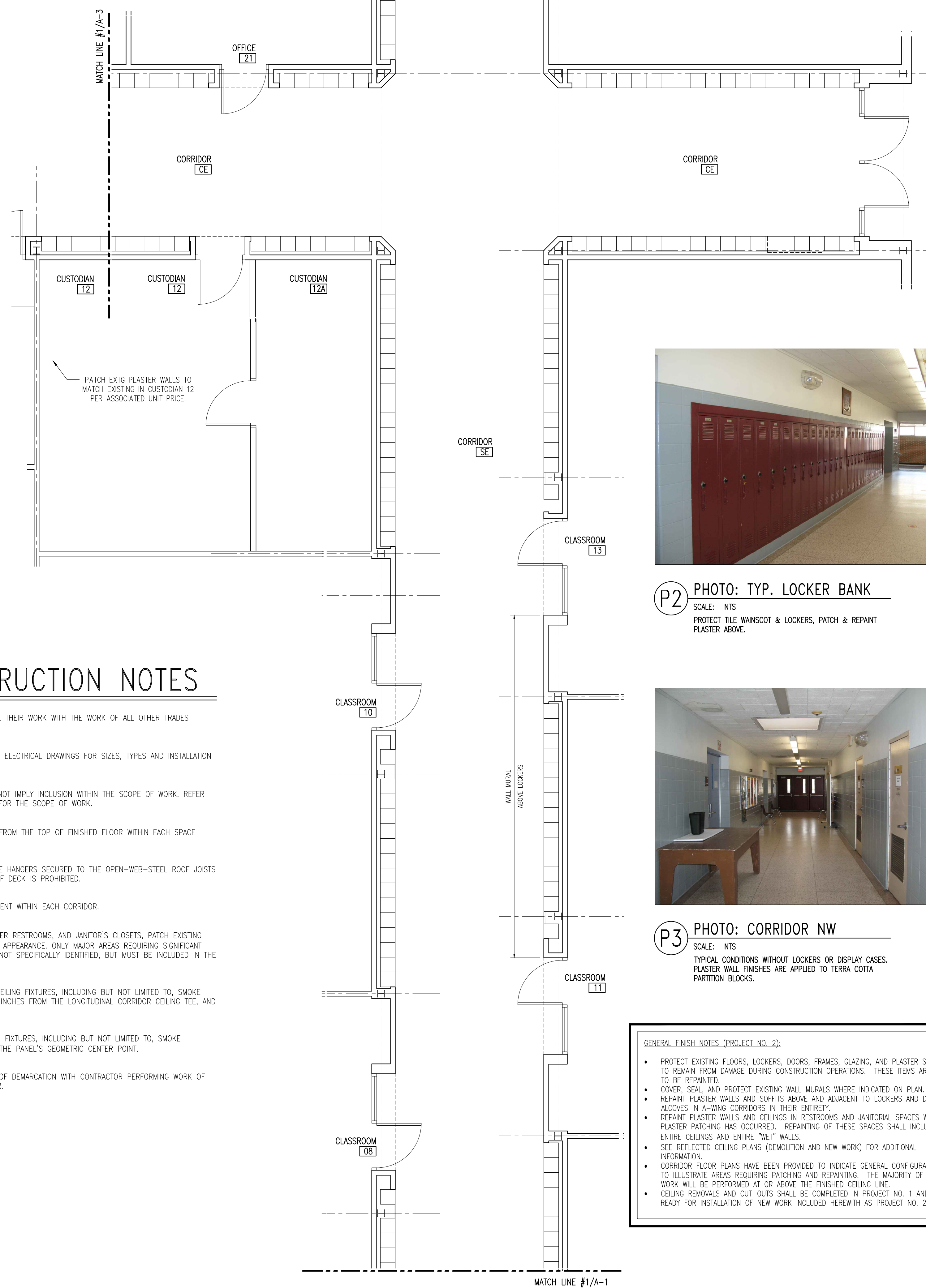
DRAWING TITLE:

KEY FLOOR PLAN
WORK AREAS PLAN

G-2



P1 PHOTO: CORRIDOR NE
SCALE: NTS
CEILING SHALL BE REMOVED IN PROJECT NO.1 SCOPE.



P2 PHOTO: TYP. LOCKER BANK
SCALE: NTS
PROTECT TILE WAINSCOT & LOCKERS, PATCH & REPAINT
PLASTER ABOVE.



P3 PHOTO: CORRIDOR NW

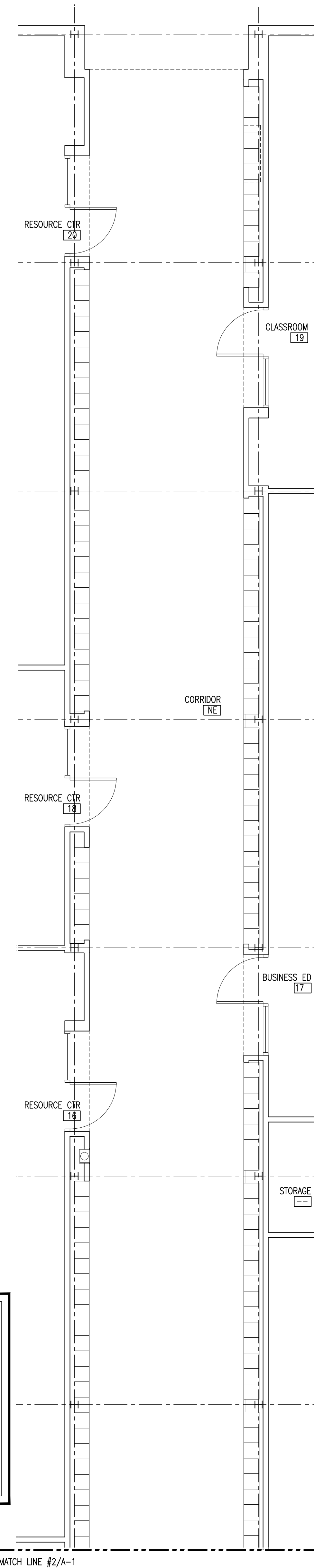
SCALE: NTS

TYPICAL CONDITIONS WITHOUT LOCKERS OR DISPLAY CASES.
PLASTER WALL FINISHES ARE APPLIED TO TERRA COTTA
PARTITION BLOCKS.

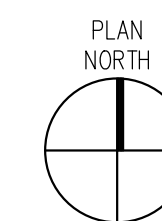
GENERAL FINISHING NOTES (PROJECT NO. 2):

- PROTECT EXISTING FLOORS, LOCKERS, DOORS, FRAMES, GLAZING, AND PLASTER SURFACES TO REMAIN FROM DAMAGE DURING CONSTRUCTION OPERATIONS. THESE ITEMS ARE TO BE REPAIRED.
- COVER SEAL AND PROTECT EXISTING WALL MURALS WHERE INDICATED ON PLAN.
- REPAIR PLASTER WALLS AND SOFFITS ABOVE AND ADJACENT TO LOCKERS AND DOOR ADJACENT IN A-WING CORRIDORS IN THEIR ENTIRETY.
- REPAIR PLASTER WALLS EXISTING IN RESTROOMS AND UNIFORMS SPACES WHERE PLASTER CHIPPING HAS OCCURRED. REPAIRING OF THESE SPACES SHALL INCLUDE ENTIRE CEMENTS AND ENTIRE "WET" WALLS.
- SEE SELECTED CEILING PLANS (DEMOLITION AND NEW WORK) FOR ADDITIONAL INFORMATION.

CORRIDOR FLOOR PLANS HAVE BEEN PROVIDED TO INDICATE GENERAL CONFIGURATION AND TO ILLUSTRATE AREAS REQUIRED FOR DEMOLITION AND REPAIRING. THE MAJORITY OF THE WORK WILL BE PERFORMED AT OR ABOVE THE FINISHED CEILING LINE. CEILING REMOVALS AND CUT-OUTS SHALL BE COMPLETED IN PROJECT NO. 1 AND BE RECONSTRUCTION.



3 PARTIAL CORRIDOR PLAN 1C
SCALE: 1/4" = 1'-0"



GENERAL CONSTRUCTION NOTES

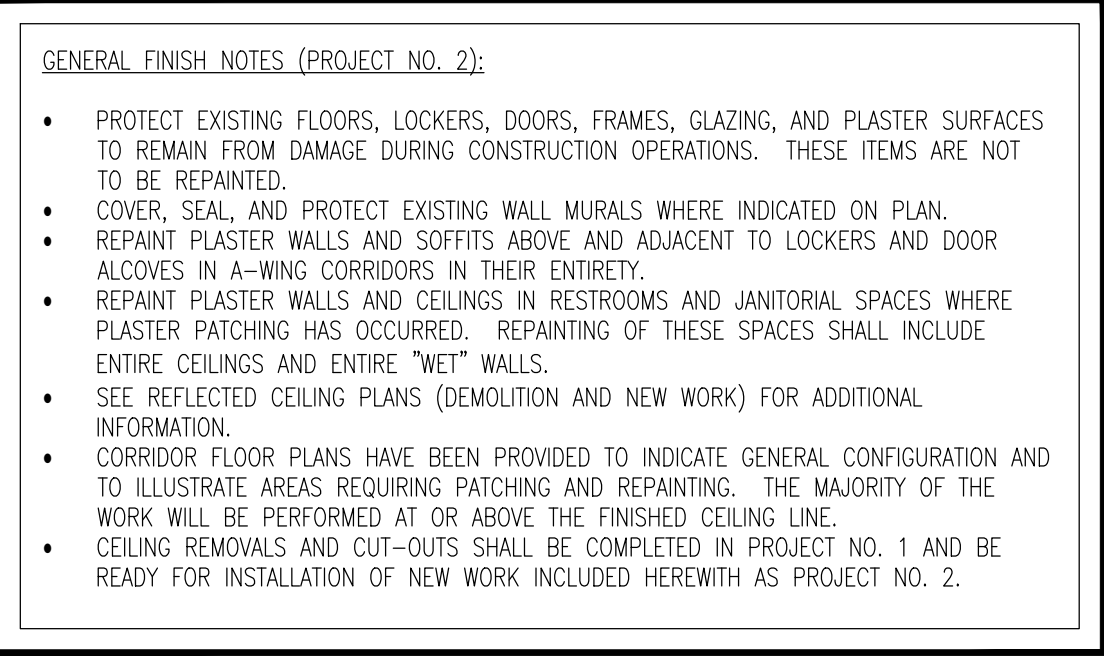
- 1 CONTRACTORS OF RESTRICTIVE TRADES SHALL COORDINATE THEIR WORK WITH THE WORK OF ALL OTHER TRADES BEFORE INSTALLATION OF FIXTURES AND/ OR EQUIPMENT.
- 2 REFER TO FIRE PROTECTION, PLUMBING, MECHANICAL AND ELECTRICAL DRAWINGS FOR SIZES, TYPES AND INSTALLATION REQUIREMENTS OF FIXTURES AND/ OR EQUIPMENT.
- 3 INCLUSION OF SYMBOLS IN THE GRAPHIC LEGEND DOES NOT IMPLY INCLUSION WITHIN THE SCOPE OF WORK. REFER TO REFLECTED CEILING PLANS AND ASSOCIATED DETAILS FOR THE SCOPE OF WORK.
- 4 ALL SPECIFIED CEILING/ BULKHEAD HEIGHTS ARE TAKEN FROM THE TOP OF FINISHED FLOOR WITHIN EACH SPACE UNLESS OTHERWISE NOTED.
- 5 NEW CEILING GRID TEES SHALL BE SUSPENDED WITH WIRE HANGERS SECURED TO THE OPEN-WEB-STEEL ROOF JOISTS ABOVE. SECURING WIRE HANGER ANCHORS INTO THE ROOF DECK IS PROHIBITED.
- 6 REFER TO THE CEILING PLANS FOR CEILING GRID PLACEMENT WITHIN EACH CORRIDOR.
- 7 WITHIN EXISTING BOY'S & GIRL'S RESTROOMS, SINGLE URINE RESTROOMS, AND JANITOR'S CLOSETS, PATCH EXISTING PLASTER CEILINGS AS REQUIRED TO PROVIDE "LIKE-NEW" APPEARANCE. ONLY MAJOR AREAS REQUIRING SIGNIFICANT PATCHING ARE IDENTIFIED. REMAINING MINOR AREAS ARE NOT SPECIFICALLY IDENTIFIED, BUT MUST BE INCLUDED IN THE BID PRICE.
- 8 AT RECTANGULAR ACOUSTICAL CEILING PANELS, INSTALL CEILING FIXTURES, INCLUDING BUT NOT LIMITED TO, SMOKE DETECTORS, SPEAKERS, CAMERAS AND THERMOSTATS, 12 INCHES FROM THE LONGITUDINAL CORRIDOR CEILING TEE, AND MIDWAY BETWEEN ADJACENT LADITUDINAL CEILING TEES.
- 9 AT SQUARE ACOUSTICAL CEILING PANELS, INSTALL CEILING FIXTURES, INCLUDING BUT NOT LIMITED TO, SMOKE DETECTORS, SPEAKERS, CAMERAS AND THERMOSTATS, AT THE PANEL'S GEOMETRIC CENTER POINT.
- 10 COORDINATE PHASING OF WORK SCHEDULING AND LINES OF DEMARCATION WITH CONTRACTOR PERFORMING WORK OF PROJECT NO. 1 UNDER SEPARATE CONTRACT WITH OWNER.

1 PARTIAL CORRIDOR PLAN 1A
SCALE: 1/4" = 1'-0"

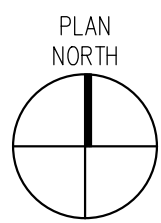
2 PARTIAL CORRIDOR PLAN 1B
SCALE: 1/4" = 1'-0"

3 PARTIAL CORRIDOR PLAN 1C
SCALE: 1/4" = 1'-0"





2 PARTIAL CORRIDOR PLAN 2B
SCALE: 1/4" = 1'-0"



3 PARTIAL CORRIDOR PLAN 2C
SCALE: 1/4" = 1'-0"

[illegible]

PROJECT NO: 20-29705

PROJECT:

Central Regional
School District

High School
A-Wing Corridors
Ceiling Replacement
& Renovations
Project No. 2

509 Forest Hills Parkway
Berkley Township
Ocean County
New Jersey

RAWING TITLE:
A-WING CORRIDOR
FLOOR PLANS 2

RAWING NO:

A-3

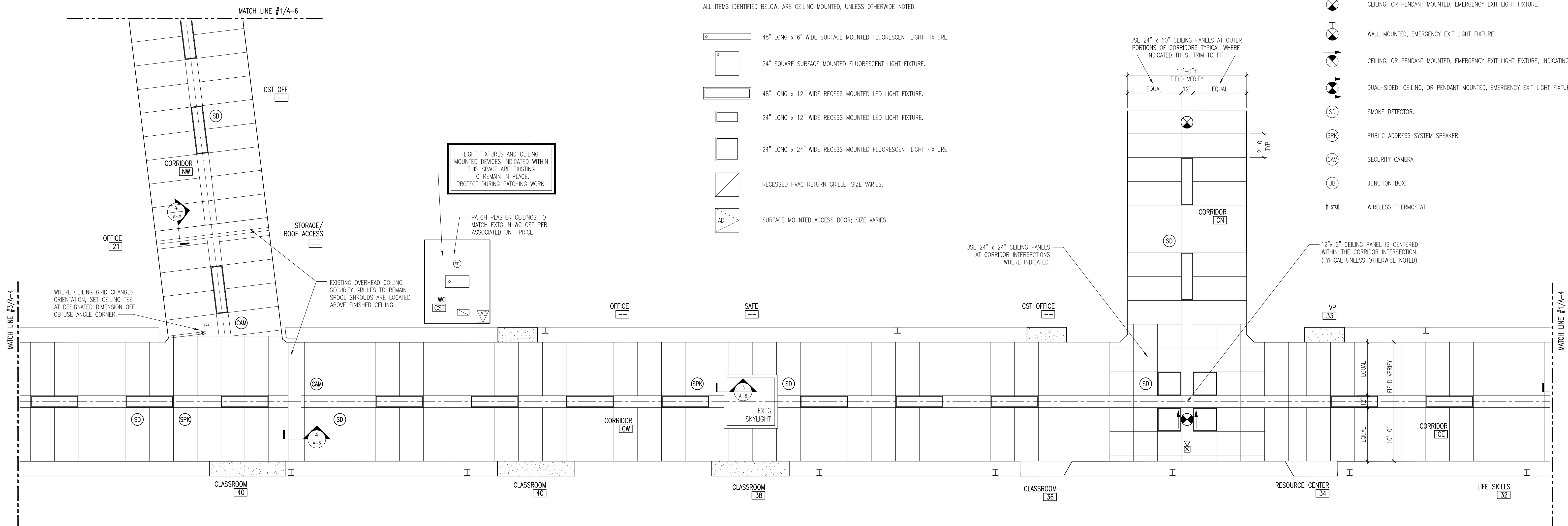
GRAPHIC SYMBOL LEGEND

ALL ITEMS IDENTIFIED BELOW, ARE CEILING MOUNTED, UNLESS OTHERWISE NOTED.

- 48" LONG x 6" WIDE SURFACE MOUNTED FLUORESCENT LIGHT FIXTURE.
- 24" SQUARE SURFACE MOUNTED FLUORESCENT LIGHT FIXTURE.
- 48" LONG x 12" WIDE RECESS MOUNTED LED LIGHT FIXTURE.
- 24" LONG x 12" WIDE RECESS MOUNTED LED LIGHT FIXTURE.
- 24" LONG x 24" WIDE RECESS MOUNTED FLUORESCENT LIGHT FIXTURE.
- RECESSED HVAC RETURN GRILLE; SIZE VARIES.
- SURFACE MOUNTED ACCESS DOOR; SIZE VARIES.

GRAPHIC SYMBOLS LEGEND (CONT.)

- CEILING, OR PENDANT MOUNTED, EMERGENCY EXIT LIGHT FIXTURE.
- WALL MOUNTED, EMERGENCY EXIT LIGHT FIXTURE.
- CEILING, OR PENDANT MOUNTED, EMERGENCY EXIT LIGHT FIXTURE, INDICATING EXIT DIRECTION.
- DUAL-SIDED, CEILING, OR PENDANT MOUNTED, EMERGENCY EXIT LIGHT FIXTURE, INDICATING EXIT DIRECTION.
- SMOKE DETECTOR.
- PUBLIC ADDRESS SYSTEM SPEAKER.
- SECURITY CAMERA.
- JUNCTION BOX.
- WIRELESS THERMOSTAT.

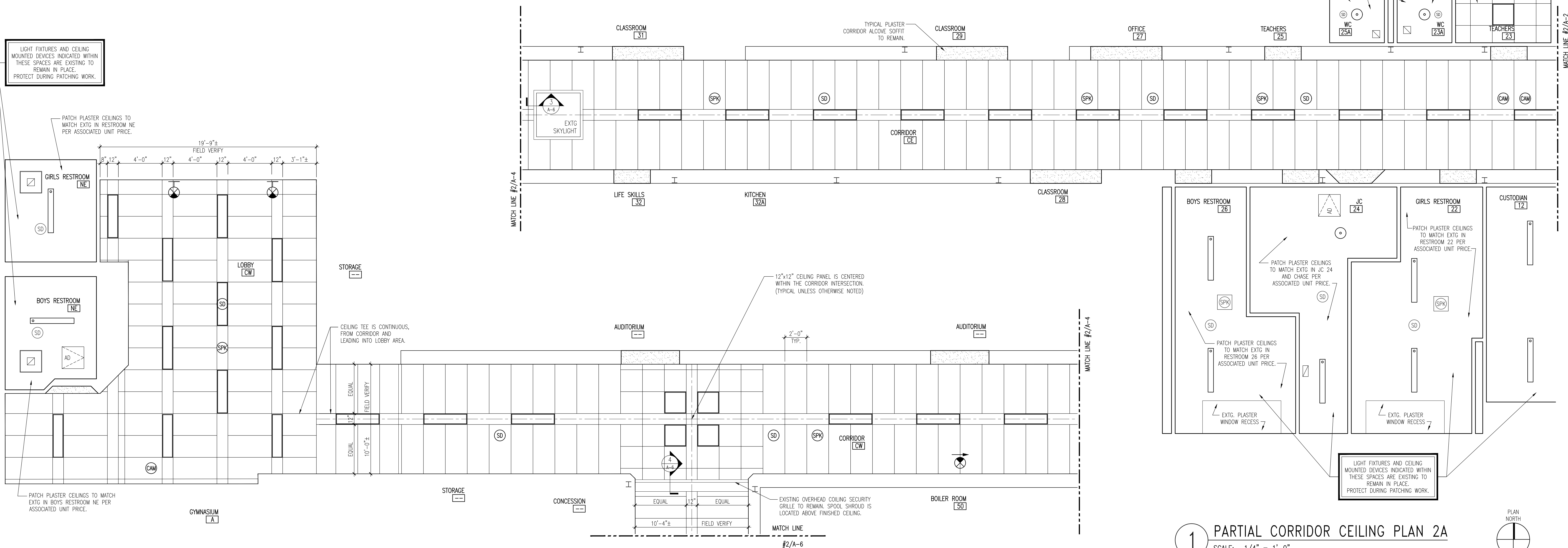


2 PARTIAL CORRIDOR CEILING PLAN 2B

SCALE: 1/4" = 1'-0"

NOTE: WHERE EXISTING SKYLIGHTS ARE INDICATED, SKYLIGHTS AND SKYLIGHT SHAFT FINISHES SHALL REMAIN UNDISTURBED BY CONSTRUCTION OPERATIONS.

CEILING HEIGHTS: EXISTING PLASTER CEILINGS IN RESTROOMS AND JANITORIAL SPACES AND ACOUSTIC TILES ON PLASTER CEILINGS IN CORRIDORS ARE TYPICALLY 8'-6" A.F.F. PATCHED PLASTER SHALL MATCH EXISTING. NEW SUSPENDED ACOUSTIC CEILINGS SHALL BE INSTALLED AT 8'-2" A.F.F. IN ORDER TO ACCOMMODATE FIELD CONDITIONS.



3 PARTIAL CORRIDOR CEILING PLAN 2C

SCALE: 1/4" = 1'-0"

1 PARTIAL CORRIDOR CEILING PLAN 2A

SCALE: 1/4" = 1'-0"

ISSUE: DATE: TITLE:

01 02-05-2021 FOR BIDDING

PROJECT NO: 20-29/05

PROJECT:

Central Regional
School District

High School
A-Wing Corridors
Ceiling Replacement
& Renovations
Project No. 2

509 Forest Hills Parkway
Berkley Township
Ocean County
New Jersey

DRAWING TITLE:

A-WING CORRIDOR
REFLECTED
CEILING PLANS 2
NEW WORK

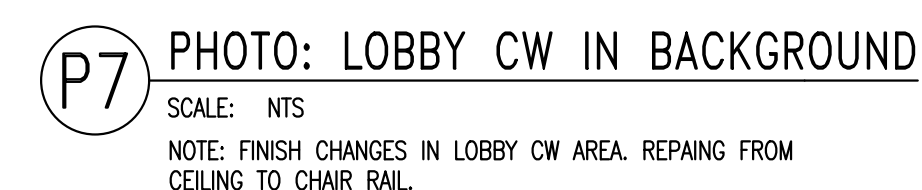
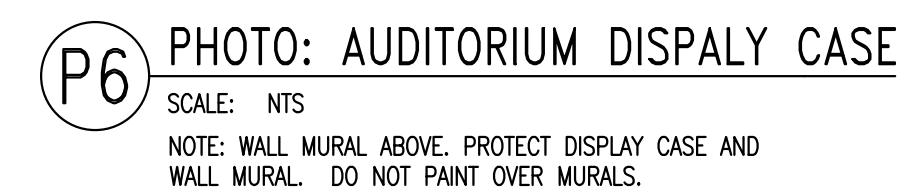
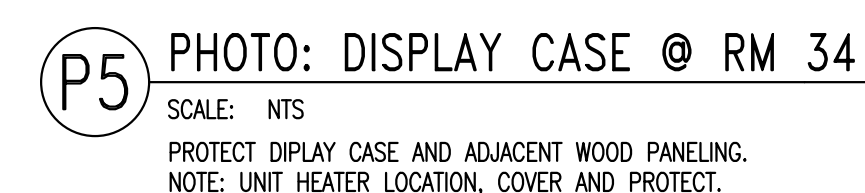
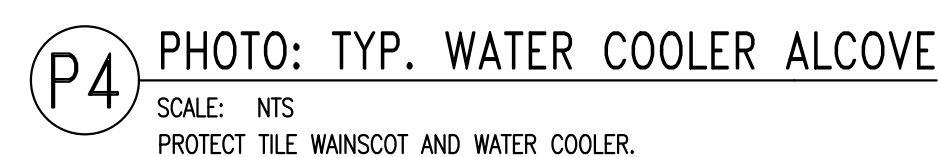
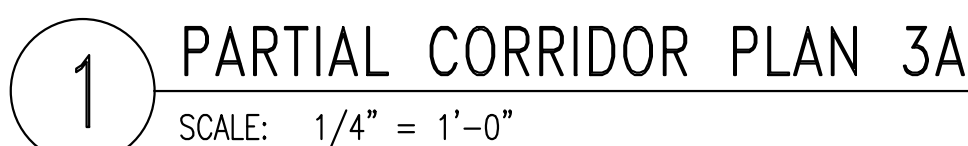
D.W. BUONANNINO, AIA NJ LIC. 21A00600000

DRAWING NO:

A-4

SHEET NO:

6 of 15



- GENERAL FINISH NOTES (PROJECT NO. 2):**
- PESTER EXISTING FLOORS, LOCKERS, DOORS, GRATES, FRAMING, AND PLASTER SURFACE TO REMAIN FROM DAMAGE DURING CONSTRUCTION OPERATIONS. THESE ITEMS ARE NOT TO BE REPAIRED.
 - COVER ALL EXISTING PESTER EXISTING WALL MURALS WHERE INDICATED ON PLAN.
 - REPAINT PLASTER WALLS AND SOFFITS ABOVE AND ADJACENT TO LOCKERS AND DOOR ALCOVES IN A-WING CORRIDORS IN THEIR ENTIRETY.
 - REPAIR PLASTER WALLS AND SOFFITS IN RESTROOMS AND UNIDOTAL SPACES WHERE PLASTER PATCHING HAS OCCURRED. REPAIRING OF THESE SPACES SHALL INCLUDE ENTIRE CEILING AND ENTIRE "WET" WALLS.
 - SEE ILLUSTRATED CEILING PLANS (DEMOLITION AND NEW WORK) FOR ADDITIONAL INFORMATION.
 - CORRIDOR FLOOR PLANS HAVE BEEN PROVIDED TO INDICATE GENERAL CONFIGURATION A CORRIDOR REQUIREMENTS. THE CORRIDOR FLOOR FINISHES AND QUALITY OF THE WORK WILL BE PERFORMED AT OR ABOVE THE FINISHED CEILING LINE.
 - CEILING REMOVALS AND CUT-OUTS SHALL BE COMPLETED IN PROJECT NO. 1 AND BE REPAIRED IN PROJECT NO. 2.

[illegible]

PROJECT NO: 20-29705

PROJECT:

Central Regional
School District

High School A-Wing Corridors Ceiling Replacement & Renovations Project No. 2

509 Forest Hills Parkway
Berkley Township
Ocean County
New Jersey

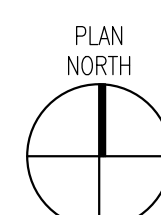
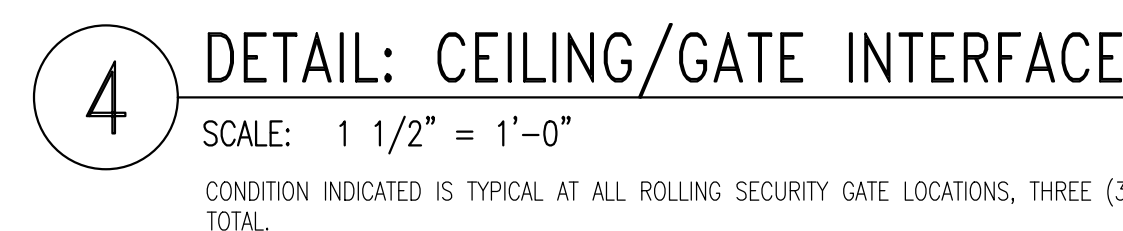
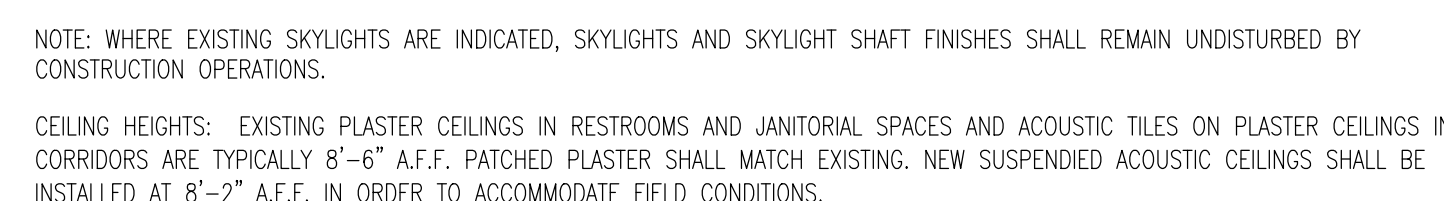
DRAWING TITLE:

A-WING CORRIDOR
FLOOR PLANS 3
EXISTING PHOTOS

D.W. BUONANNO, AIA NJ LIC. 21A00690000
DRAWING NO:

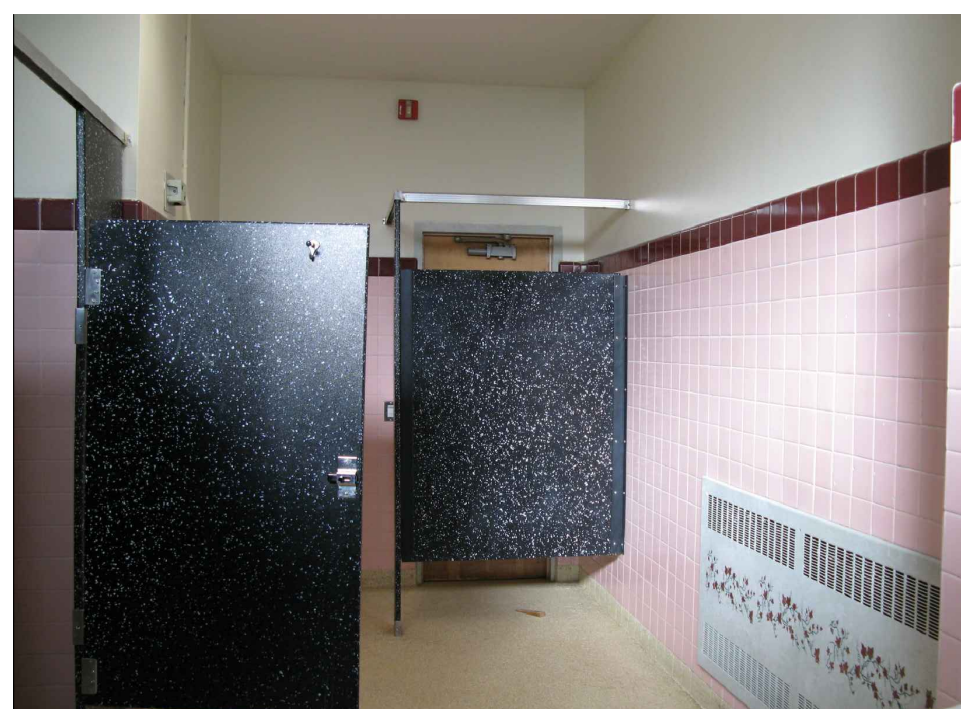
A-5

SHEET NO: 7 of 15





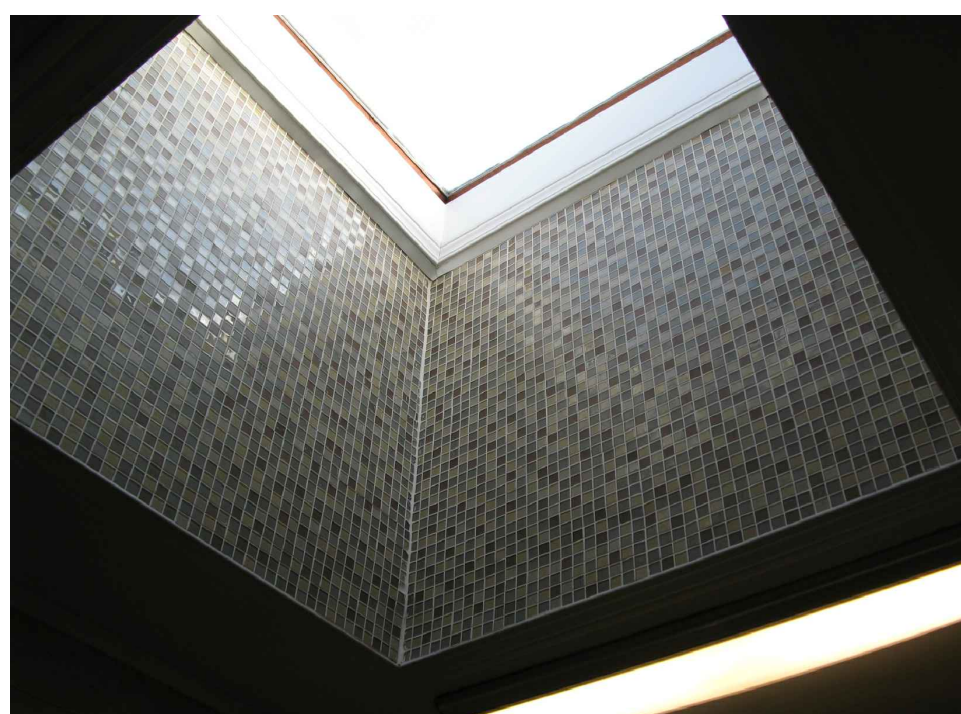
P8 PHOTO: ROLL UP GATE
SCALE: NTS
SEE DETAIL ON REFLECTED CEILING PLAN SHEET FOR
INTERFACE AT NEW SUSPENDED ACOUSTIC CEILING.



P11 PHOTO: GIRLS RESTROOM 22
SCALE: NTS
PROTECT TILE WAINSCOTING, TOILET PARTITIONS, AND
PLUMBING FIXTURES, TYPICAL IN RESTROOMS.



PHOTO: J.C. 24 PIPE CHASE
SCALE: NTS
NOTE: PLASTER WALL & CEILING PATCHING SHALL BE
REQUIRED THIS AREA. REPAINT AREAS PATCHED.



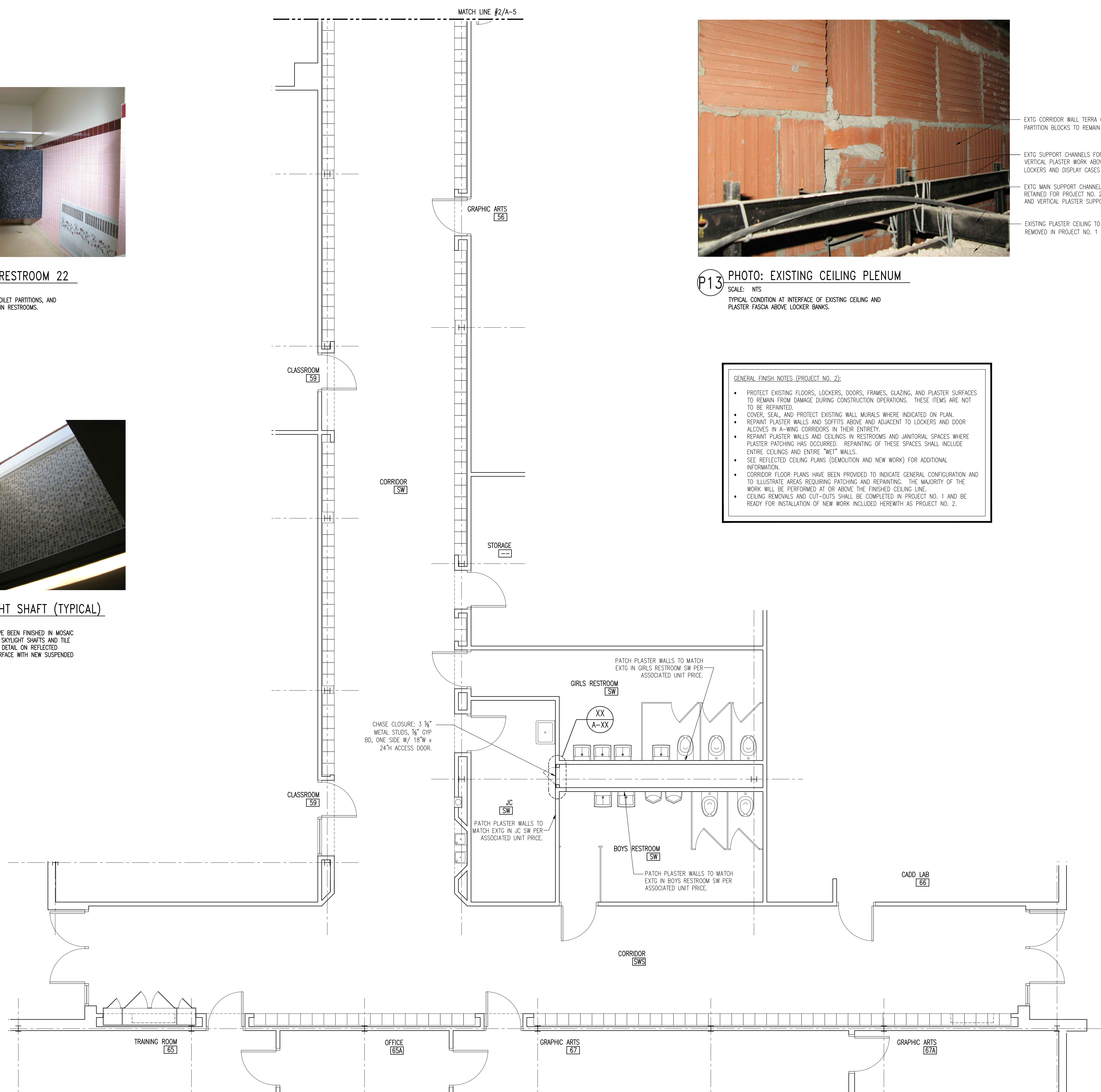
P12 PHOTO: SKYLIGHT SHAFT (TYPICAL)

SCALE: NTS

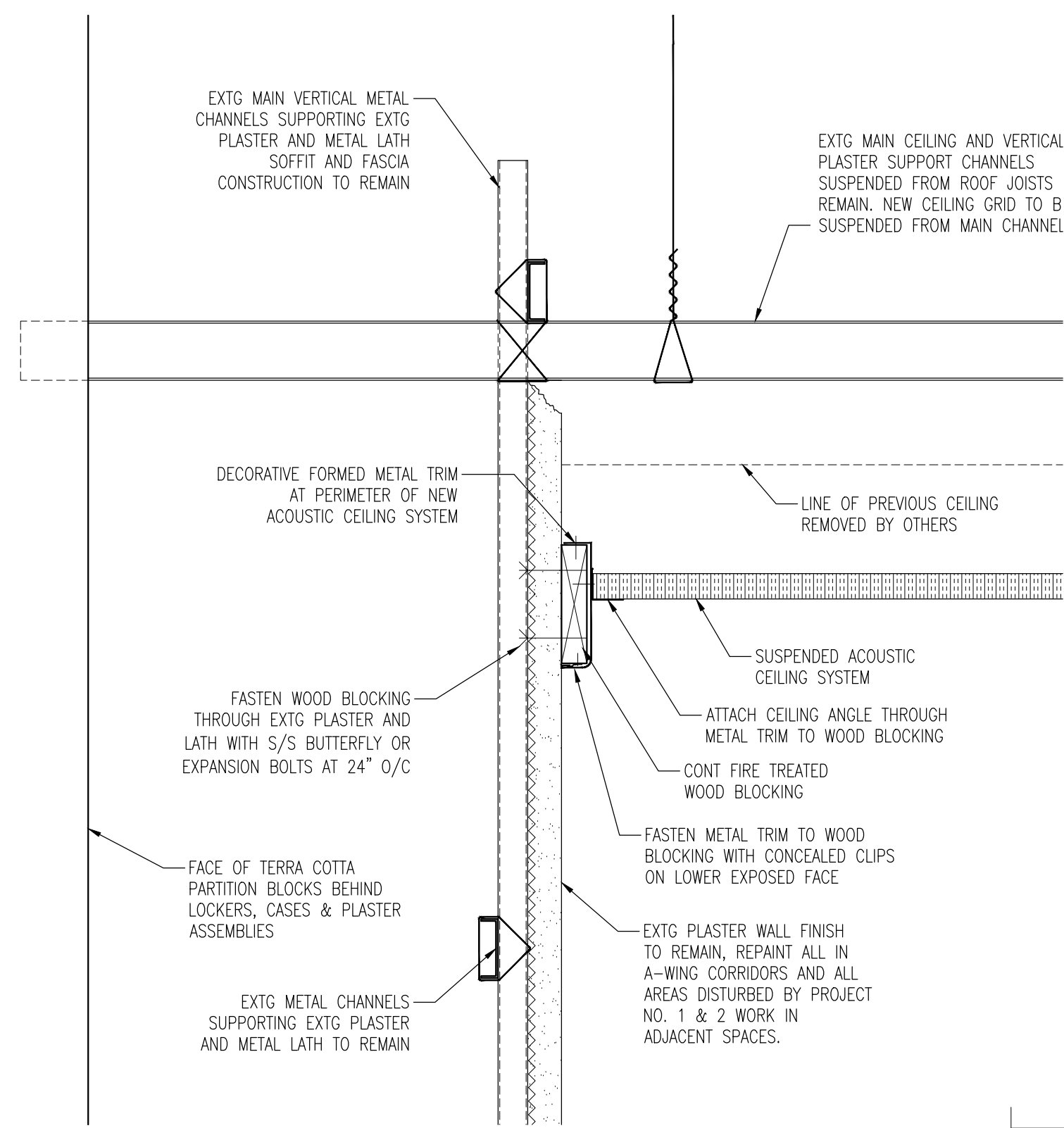
TYPICAL SKYLIGHT SHAFTS HAVE BEEN FINISHED IN MOSAIC TILE OVER PLASTER. EXISTING SKYLIGHT SHAFTS AND TILE SHALL REMAIN IN PLACE. SEE DETAIL ON REFLECTED CEILING PLAN SHEE FOR INTERFACE WITH NEW SUSPENDED ACOUSTIC CEILING.



P10 PHOTO: BOYS RESTROOM 26
SCALE: NTS
PROTECT TILE WAINSCOTING, TOILET PARTITIONS, AND
PLUMBING FIXTURES, TYPICAL IN RESTROOMS.



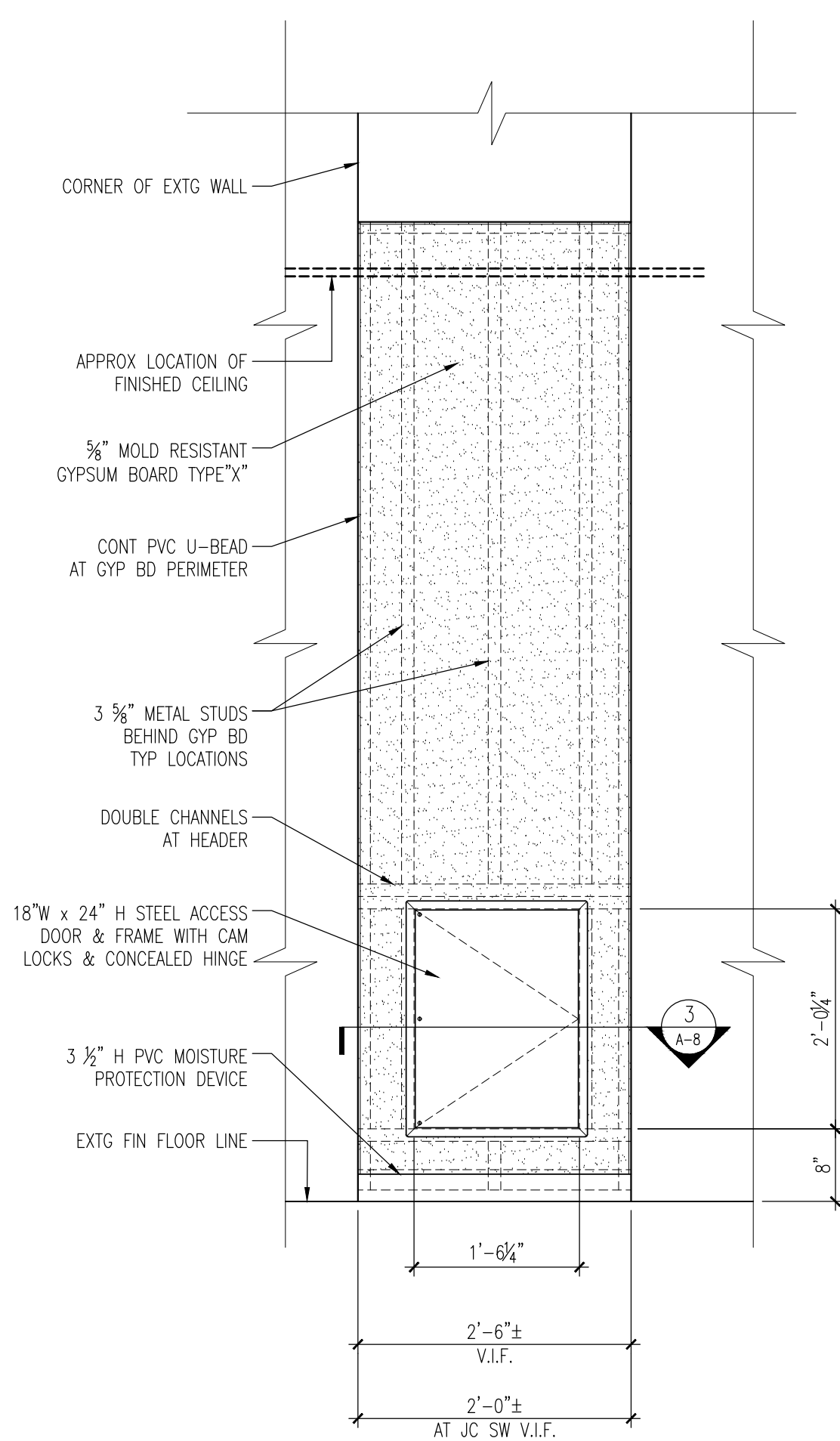
1 PARTIAL CORRIDOR PLAN 4A
SCALE: 1/4" = 1'-0"



5 DETAIL: TYP. CEILING PERIMETER

SCALE: 3" = 1'-0"

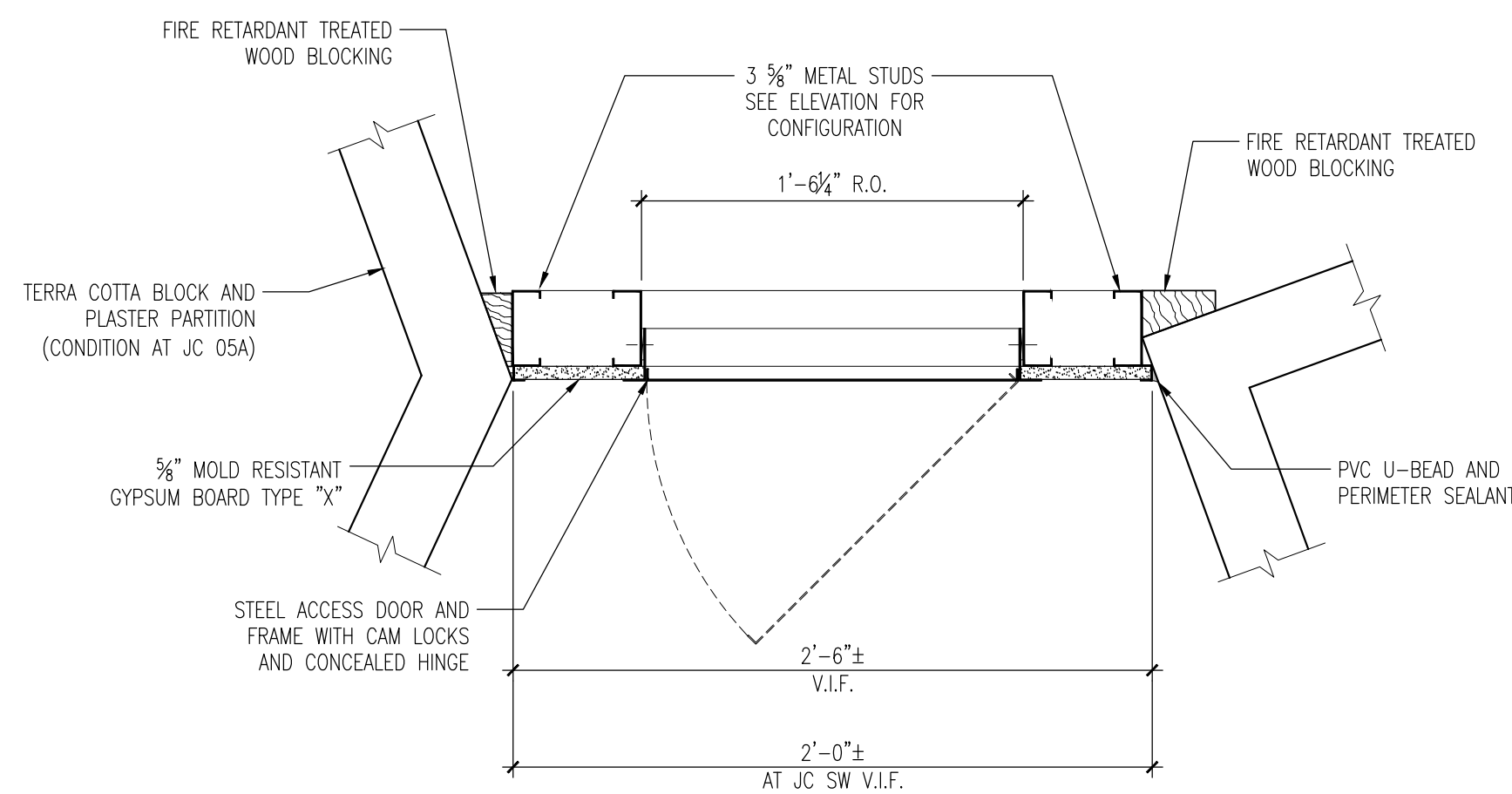
CONDITION INDICATED IS TYPICAL AT AREAS ABOVE LOCKERS, DISPLAY CASES, FIRE EXTINGUISHER CABINETS, AND SIMILAR LOCATIONS WHERE THE FINISHED WALL FACE IS FRAMED AWAY FROM THE BACK-UP PARTITION BLOCKS. WHERE PLASTER IS APPLIED DIRECTLY TO TERRA COTTA OR CMU BACK-UP, INSTALL DECORATIVE METAL TRIM AS SHOWN WITH BLOCKING ANCHORED INTO BLOCKS WITH EXPANSION ANCHORS.



4 ELEVATION: TYP. CHASE CLOSURE

SCALE: 3/4" = 1'-0"

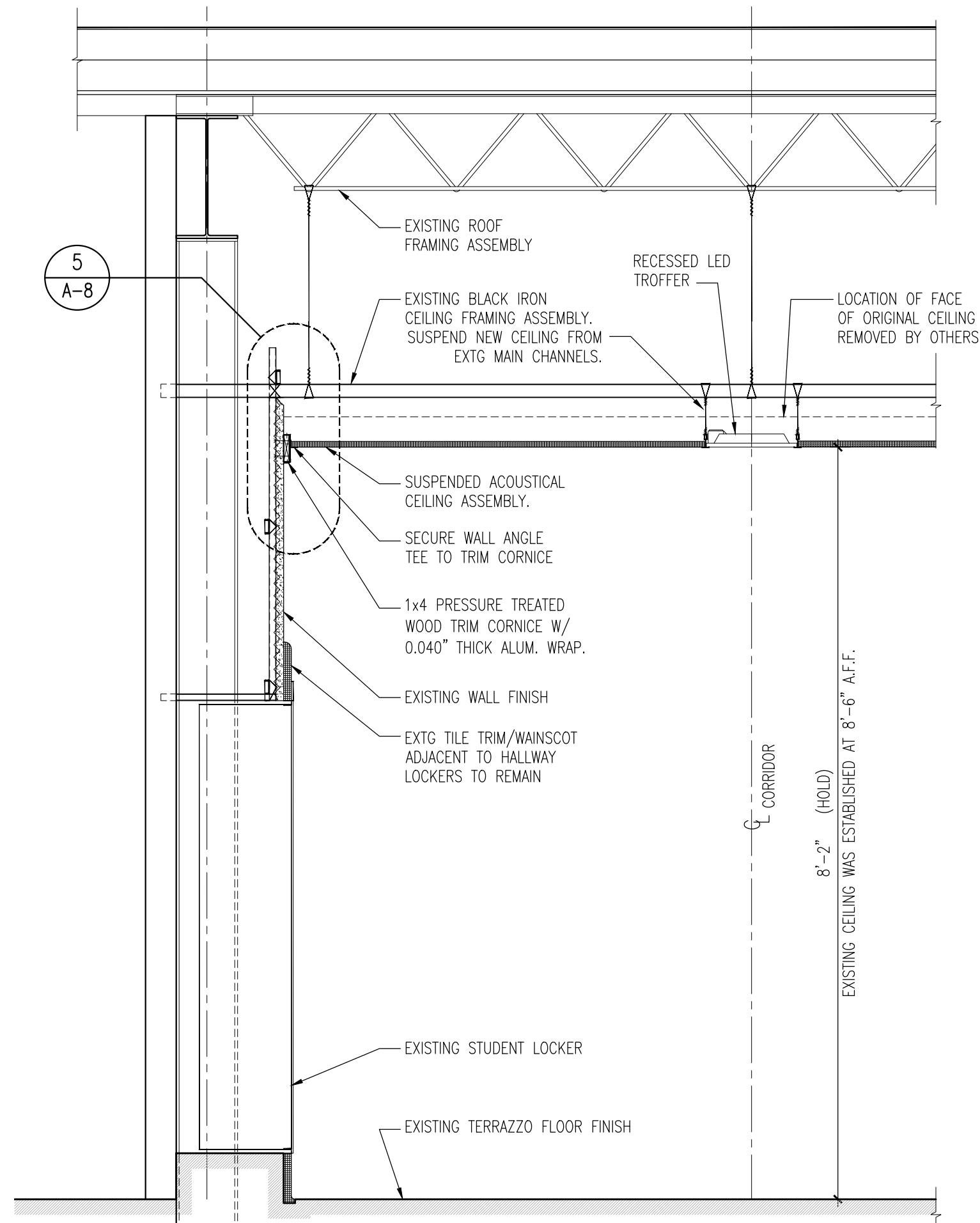
ELEVATION INDICATES CONDITION AT J.C. OSA. CONDITION AT J.C. SW IS SIMILAR. FASTEN STUDS AND TRACK TO CONCRETE SLAB, MASONRY WALLS, OR WOOD BLOCKING WITH EXPANSION ANCHORS OR WOOD SCREWS, AS APPROPRIATE.



3 DETAIL: TYP. CHASE CLOSURE

SCALE: 1 1/2" = 1'-0"

DETAIL INDICATES CONDITION AT J.C. OSA. CONDITION AT J.C. SW IS SIMILAR.

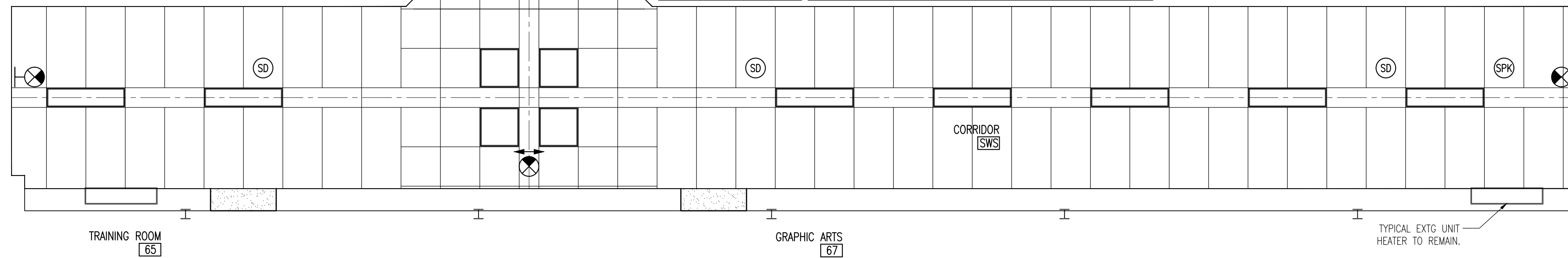


2 TYPICAL CORRIDOR CROSS SECTION

SCALE: 3/4" = 1'-0"

1 PARTIAL CORRIDOR CEILING PLAN-4A

SCALE: 1/4" = 1'-0"



GRAPHIC SYMBOL LEGEND

ALL ITEMS IDENTIFIED BELOW, ARE CEILING MOUNTED, UNLESS OTHERWISE NOTED.

- 48" LONG x 6" WIDE SURFACE MOUNTED FLUORESCENT LIGHT FIXTURE.
- 24" SQUARE SURFACE MOUNTED FLUORESCENT LIGHT FIXTURE.
- 48" LONG x 12" WIDE RECESS MOUNTED LED LIGHT FIXTURE.
- 24" LONG x 12" WIDE RECESS MOUNTED LED LIGHT FIXTURE.
- 24" LONG x 24" WIDE RECESS MOUNTED FLUORESCENT LIGHT FIXTURE.
- RECESSED HVAC RETURN GRILLE; SIZE VARIES.
- SURFACE MOUNTED ACCESS DOOR; SIZE VARIES.
- CEILING, OR PENDANT MOUNTED, EMERGENCY EXIT LIGHT FIXTURE.
- WALL MOUNTED, EMERGENCY EXIT LIGHT FIXTURE.
- CEILING, OR PENDANT MOUNTED, EMERGENCY EXIT LIGHT FIXTURE, INDICATING EXIT DIRECTION.
- DUAL-SIDED, CEILING, OR PENDANT MOUNTED, EMERGENCY EXIT LIGHT FIXTURE, INDICATING EXIT DIRECTION.
- SMOKE DETECTOR.
- PUBLIC ADDRESS SYSTEM SPEAKER.
- SECURITY CAMERA.
- JUNCTION BOX.
- WIRELESS THERMOSTAT.

NOTE: WHERE EXISTING SKYLIGHTS ARE INDICATED, SKYLIGHTS AND SKYLIGHT SHAFT FINISHES SHALL REMAIN UNDISTURBED BY CONSTRUCTION OPERATIONS.

CEILING HEIGHTS: EXISTING PLASTER CEILINGS IN RESTROOMS AND JANITORIAL SPACES AND ACOUSTIC TILES ON PLASTER CEILINGS IN CORRIDORS ARE TYPICALLY 8'-6" A.F.F. PATCHED PLASTER SHALL MATCH EXISTING. NEW SUSPENDED ACOUSTIC CEILINGS SHALL BE INSTALLED AT 8'-2" A.F.F. IN ORDER TO ACCOMMODATE FIELD CONDITIONS.

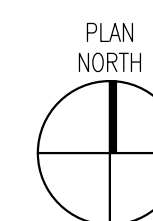
PATCH PLASTER CEILINGS TO MATCH EXISTING IN GIRLS RESTROOM SW PER ASSOCIATED UNIT PRICE.

NEW CHASE CLOSURE PANEL.

LIGHT FIXTURES AND CEILING MOUNTED DEVICES INDICATED WITHIN THESE SPACES ARE EXISTING TO REMAIN IN PLACE. PROTECT DURING PATCHING WORK.

PATCH PLASTER CEILINGS TO MATCH EXISTING IN BOYS RESTROOM SW PER ASSOCIATED UNIT PRICE.

CADD LAB 66



ISSUE: DATE: TITLE:

01 02-05-2021 FOR BIDDING

PROJECT NO: 20-29705

Central Regional School District

High School A-Wing Corridors Ceiling Replacement & Renovations Project No. 2

509 Forest Hills Parkway
Berkley Township
Ocean County
New Jersey

DRAWING TITLE:

A-WING CORRIDOR REFLECTED CEILING PLANS 4 NEW WORK

D.W. BUONANNINO, AIA NJ LIC. 21A000690001

DRAWING NO:

A-8

SHEET NO: 10 of 15