

## GENERAL NOTES

1. FINAL LOCATION OF LIGHTING FIXTURES, AND OTHER CEILING-MOUNTED ELECTRICAL EQUIPMENT SHALL BE MARKED OUT AND REVIEWED BY THE ARCHITECT PRIOR TO CUTTING FOR INSTALLATION.
2. ALL NOTATIONS OF "SCALE" ARE INTENDED AS APPROXIMATIONS. THE CONTRACTOR SHALL BE RESPONSIBLE FOR ASCERTAINING THE EXACT LOCATIONS OF ALL EQUIPMENT AND CHECKING THE REQUIRED CLEARANCES.
3. ALL MOUNTING HEIGHTS GIVEN FOR LIGHT FIXTURES SHALL BE FROM FINISHED FLOOR OR GRADE TO BOTTOM OF LIGHTING FIXTURES.
4. PULL AND JUNCTION BOXES SHALL BE SURFACE-TYPE IN ULTIMATELY UNFINISHED AREAS UNLESS OTHERWISE NOTED. LOCATE APPROXIMATELY WHERE INDICATED ON THE WALLS, BEAMS, OR SUSPENDED FROM CEILING, TO BUT CONTACT ENTRANCE TO ANY OTHER INTERFERENCE WITH EQUIPMENT OF OTHER TRADES AND TO LEAVE COVERS READILY ACCESSIBLE.
5. PULL BOXES WHETHER SIZED OR NOT SHALL BE MODIFIED BY THIS CONTRACTOR TO MEET FIELD CONDITIONS AND CODE REQUIREMENTS. ADDITIONAL PULL BOXES, IF REQUIRED TO SATISFY FIELD CONDITIONS AND CODE REQUIREMENTS, SHALL BE SUPPLIED AND INSTALLED BY THIS CONTRACTOR AT NO EXTRA COST.
6. DEVICES SHALL BE MARKED OUT AND REVIEWED BY ARCHITECT PRIOR TO CUTTING FOR INSTALLATION.
7. CONDUIT & CABLE RUNS SHALL BE NEATLY INSTALLED, WHERE MULTIPLE RUNS FROM THE SAME PANEL ARE MADE, THE RUNS SHALL BE PARALLEL WITH EACH OTHER AND FASTENED WITH A COMMON SUPPORT, SPACED AND SECURED AT THE REQUIRED INTERVALS. BRANCHES SHALL TURN OFF FROM THEIR OUTLET, ALL EQUIPMENT HANGER WITHOUT CROSSING EACH OTHER.
8. ALL BRANCH CIRCUITS SHALL BE CLEARLY MARKED IN THE PANELS AS TO LOCATION AND PURPOSE. PROVIDE UPDATED TYPE PANELBOARD SCHEDULES.
9. WIRING IN AIR PLenum HUNG CEILING INSTALLED WITHOUT CONDUIT SHALL BE PLenum RATED TEFLON-JACKETED, FIRE ALARM WIRING SHALL BE INSTALLED IN CONDUIT OR METAL CLAD CABLE PER THE NEC 300.20C.
10. ALL ELECTRICAL WORK SHALL CONFORM TO THE REQUIREMENTS OF THE NEW EDITION REHABILITATION SUBCODE NAC 5-23-16 AND THE NATIONAL ELECTRICAL CODE 2017.
11. THE BARRIER FREE REQUIREMENTS OF NAC 5-23-12 SHALL APPLY TO THE ELECTRICAL INSTALLATION.

## DEMOLITION NOTES

1. BRANCH CIRCUITS TO BE REMOVED, CONDUIT AND SUPPORTS SHALL BE REMOVED TO ASSOCIATED LOCATION.
2. ALL WIRING RACEWAYS, BOXES, SUPPORTS, AND OTHER APPURTENANCES WILL BE REMOVED FROM THE SITE AND PROPERLY DISPOSED OF.
3. THE REMOVAL OF ALL ACTIVE FIRE ALARM COMMUNICATIONS, DATA, AND SECURITY EQUIPMENT AND ASSOCIATED CABLING SHALL BE COORDINATED WITH BUILDING OPERATIONS PERSONNEL. ALL EQUIPMENT SHALL BE REMOVED IN A BOX AND TURNED OVER TO THE OWNER.
4. IN THE PROCESS OF REMOVING RACEWAYS, PULLBOXES, PANELBOARDS, WIRING DEVICES, LIGHT FIXTURES, AND OTHER ELECTRICAL EQUIPMENT AND MATERIAL, THIS CONTRACTOR SHALL EXERCISE EXTREME CAUTION TO PREVENT DAMAGE TO ARCHITECTURAL SURFACES AND MATERIALS INCLUDING WALLS, FLOORS, CEILINGS, WINDOWS, DOORS, MIRRORS, ETC., WHICH ARE TO REMAIN. THE COST OF REPAIR OR TO REPLACE ANY MATERIAL DEEMED BY THE ARCHITECT TO HAVE BEEN UNDULY DAMAGED BY THIS CONTRACTOR DURING EXECUTION OF WORK SHALL BE BORNE BY THE CONTRACTOR, OR AT NO ADDITIONAL COST TO THE OWNER IN A BOX AND TURNED OVER TO THE OWNER.
5. CONTINUITY OF EXISTING WIRING SYSTEMS PROVIDING POWER AND SIGNAL TO THE AREAS OR DEVICES NOT AFFECTED BY THIS ALTERATION SHALL BE MAINTAINED AT ALL TIMES OF THE PROJECT.



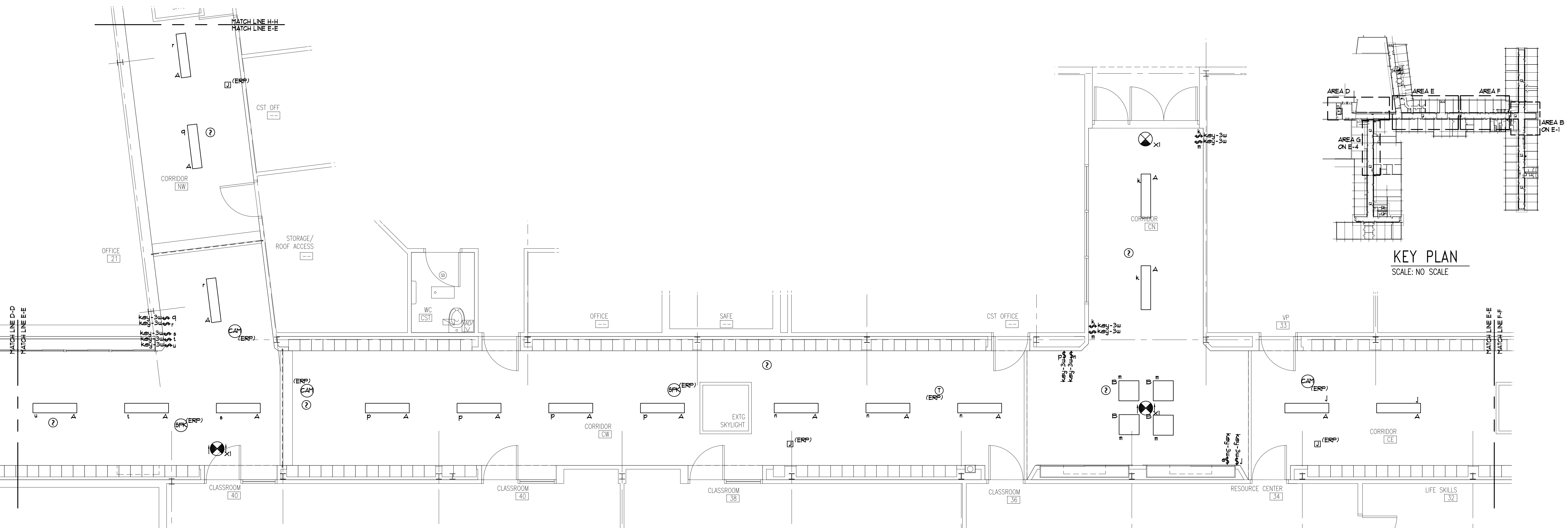
**PEI** Princeton Engineering Group, LLC  
 Consulting Engineers  
 100A Forrestal Road  
 Princeton, New Jersey 08540  
 Tel: 609 243-9286 Fax: 609 243-9287  
 PEG PROJECT NO. 922-20

IRA GUTERMAN, PE  
 PROFESSIONAL ENGINEER NJ # 37750  
 Certificate of Authorization No. 24GA27977200



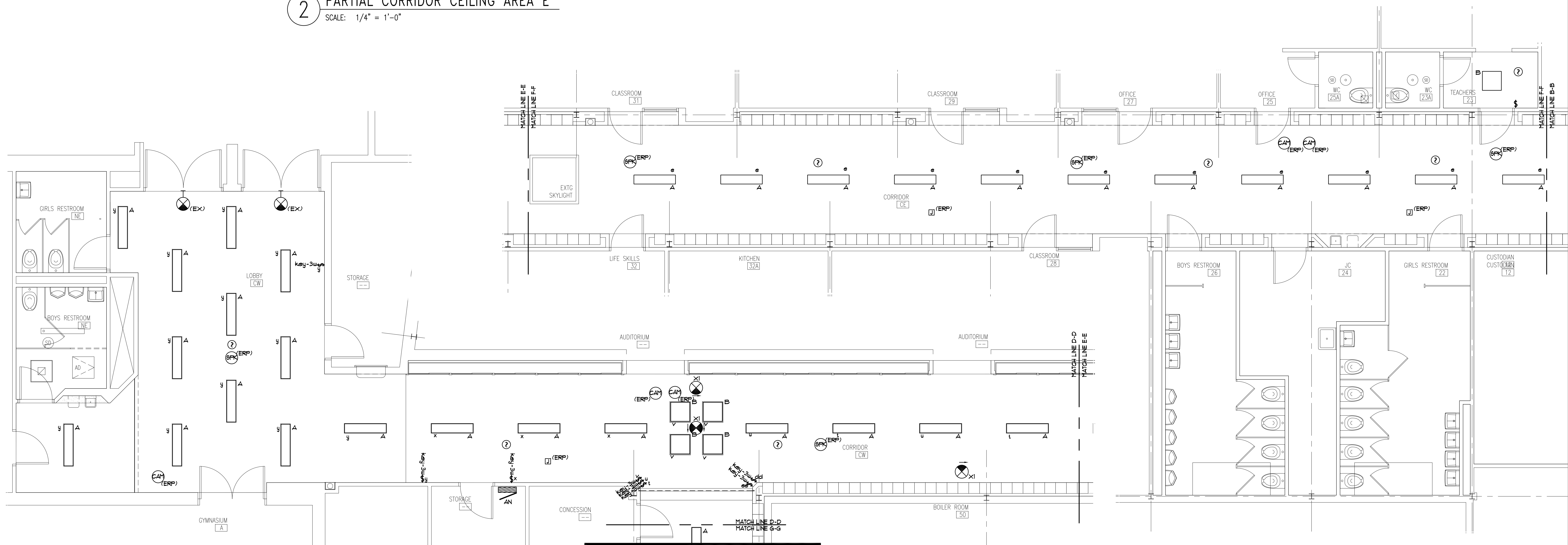
2 PARTIAL CORRIDOR CEILING AREA B  
SCALE: 1/4" = 1'-0"

3 PARTIAL CORRIDOR CEILING AREA C  
SCALE: 1/4" = 1'-0"



KEY PLAN  
SCALE: NO SCALE

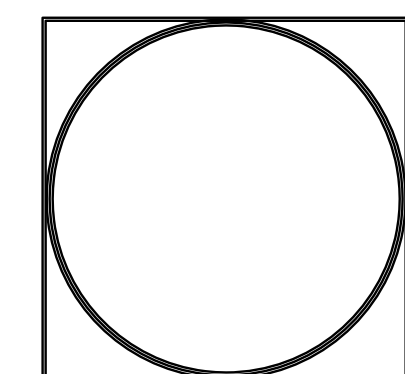
2 PARTIAL CORRIDOR CEILING AREA E  
SCALE: 1/4" = 1'-0"



1 PARTIAL CORRIDOR CEILING AREA D  
SCALE: 1/4" = 1'-0"

3 PARTIAL CORRIDOR CEILING AREA F  
SCALE: 1/4" = 1'-0"

GENERAL NOTES:  
1. REPLACE ALL KEY SWITCHES WITH HEAVY DUTY KEY SWITCHES OR APPROVED EQUAL AND RE-ENERGIZE.  
2. ALL DEVICES SHALL BE RE-ENERGIZED.



**PEI GROUP** Princeton Engineering Group, LLC  
Consulting Engineers  
100A Forrestal Road  
Princeton, New Jersey 08540  
Tel: 609 243-9286 Fax: 609 243-9287  
PEG PROJECT NO. 922-20  
IRA GUTERMAN, PE  
PROFESSIONAL ENGINEER NJ # 37750  
Certificate of Authorization No. 24GA2797200

| ISSUE: | DATE:      | TITLE:      |
|--------|------------|-------------|
| 01     | 02-05-2021 | FOR BIDDING |

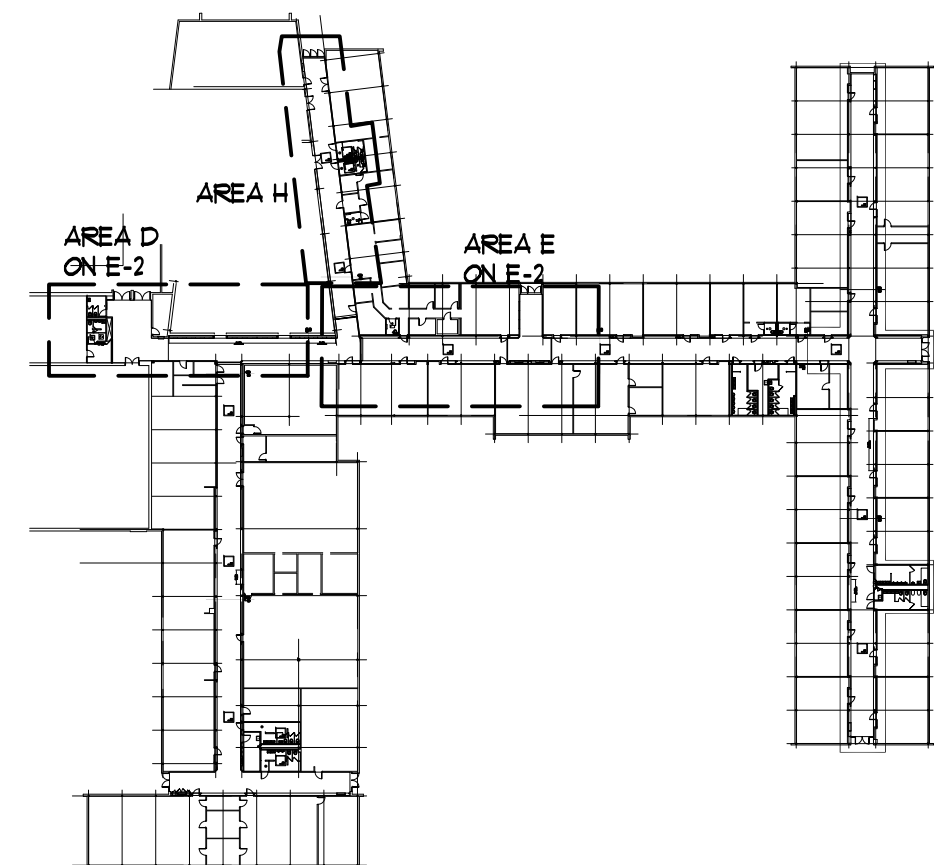
PROJECT NO:  
PROJECT:  
Central Regional School District  
High School  
A-Wing Corridors  
Ceiling Replacement  
& Renovations  
Project No. 2  
509 Forest Hills Parkway  
Berkley Township  
Ocean County  
New Jersey

DRAWING TITLE:  
ELECTRICAL PLAN 2

D.W. BJORNWIG, AIA NJ LIC. 21A00060000  
DRAWING NO:

E-2

SHEET NO. 13

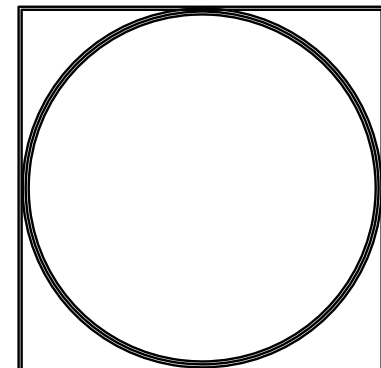


**PEI GROUP** *Princeton Engineering Group, LLC*  
Consulting Engineers  
100A Forrestal Road  
Princeton, New Jersey 08540  
Tel: 609 243-9286 Fax: 609 243-9287  
PEG PROJECT NO. 922-20

**IRA GUTERMAN, PE**  
**PROFESSIONAL ENGINEER NJ # 37750**  
Certificate of Authorization No. 24GA2797200

D.W. BUONANNO, AIA NJ LIC. 21A000690000  
DRAWING NO:

SHEET NO: 14



**PEI GROUP** **Princeton Engineering Group, LLC**  
Consulting Engineers  
100A Forrestal Road  
Princeton, New Jersey 08540  
Tel: 609 243-9286 Fax: 609 243-9287  
PEG PROJECT NO. 922-20

**IRA GUTERMAN, PE**  
**PROFESSIONAL ENGINEER NJ # 37750**  
**Certificate of Authorization NO. 246GA27977200**