

PLAN REVIEW DATA

APPLICABLE CODES AND STANDARDS

UNIFORM CONSTRUCTION CODE STATE OF NEW JERSEY, LATEST EDITION AND ALL OF ITS SUBCODES AND AMENDMENTS (N.J. REHAB SUB CODE)
NEW JERSEY REHABILITATION SUBCODE 5:23-6
INTERNATIONAL BUILDING CODE / 2018
INTERNATIONAL RESIDENTIAL CODE / 2018
INTERNATIONAL MECHANICAL CODE / 2018
INTERNATIONAL FUEL GAS CODE / 2018
ASHRAE 90.1 - 2016 (COMMERCIAL)
INTERNATIONAL ENERGY CONSERVATION CODE - NJ ED, 2018
NATIONAL STANDARD PLUMBING CODE / 2018
NATIONAL ELECTRIC CODE / 2017
ANSI A171-2009
WFCM (WOOD FRAMED CONSTRUCTION) HIGH WIND AREAS FOR ONE & TWO FAMILY DWELLINGS

OCCUPANCY CLASSIFICATION

USE GROUP 5-2

CONSTRUCTION CLASSIFICATION

PER TABLE (504.3 & 504.4) SECTION (506.2)

TYPE 25
ALLOWANCE AREA 26,000 SQ. FT.
ALLOWANCE HEIGHT 3 STORIES

BUILDING ELEMENT FIRE RESISTANCE RATINGS

PER TABLE (601) SECTION (602)

• STRUCTURAL FRAME (a) (INCLUDING COLUMNS, GIRDERS, TRUSSES)	NO CHANGE
• BEARING WALLS EXTERIOR (H) INTERIOR	NO CHANGE NO CHANGE
• NON BEARING WALLS & PARTITIONS (TABLE 602) EXTERIOR INTERIOR (a)	NO CHANGE NO CHANGE
• FLOOR CONSTRUCTION (INCLUDING SUPPORTING BEAMS AND JOISTS)	NO CHANGE
• ROOF CONSTRUCTION (INCLUDING SUPPORTING BEAMS AND JOISTS)	NO CHANGE
• FIRE WALLS (706.4)	NO CHANGE
• FIRE BARRIERS (707.3.10)	NO CHANGE
• FIRE PARTITIONS (708.3)	NO CHANGE
• SHAFTS (713.4)	NO CHANGE
• EXIT ACCESS CORRIDORS (1020.1)	NO CHANGE

BUILDING CHARACTERISTICS

NUMBER OF STORIES 5 (EXISTING TO REMAIN)
HEIGHT OF STRUCTURE ± 60'-2 1/2" (EXISTING TO REMAIN)
AREA LARGEST FLOOR EXISTING TO REMAIN
AREA OF ADDITION ± 406 SQUARE FEET (SECURITY OFFICE)

BUILDING DESIGN LOADS

PER CHAPTER 16

ROOF N/A
GROUND SNOW LOADS N/A
BASIC WIND SPEED N/A
SEISMIC REQUIREMENTS N/A
NO CHANGE - OFFICE AREA IN LIEU OF EXISTING PARKING STALLS
N/A= INDICATES NOT APPLICABLE

STANDARD ABBREVIATIONS

ABOVE FINISH FLOOR	A.F.F.	FIRE EXTINGUISHER	F.E.	MASONRY	MAS.	SAFETY	SFTY.
ACOUSTICAL CEILING TILE	A.C.T.	FLOOR	FL./FLR.	MASONRY OPENING	M.O.	SCHEDULE	SCHED.
AIR CONDITIONING	A/C	FLOOR DRAIN	F.D.	MAXIMUM	MAX.	SECTION	SECT.
ALTERNATE	ALT.	FLOOR SINK	F.S.	MECHANICAL	MECH.	SOLID CORE	S.C.
ALUMINUM	ALUM.	FLOURESCENT	FLOR.	MEMBRANE	MEMB.	SHEET	SHT.
APPROVED	APPD./APP'VD	FOOTING	FTG.	MINIMUM/MINUTE	MIN.	SIMILAR	SIM.
AT	@	FURNISH	FURN.	MISCELLANEOUS	MISC.	SPECIFICATIONS	SPEC.
		FURRING	FURR.			SQUARE	SQ.
BLOCK	BLK.			NORTH	N	SQUARE FOOT	S.F.
BLOCKING	BLKG.	GAUGE	GA.	NOMINAL	NOM.	STAINLESS STEEL	S.S.
BOARD	BD.	GALVANIZED	GALV.	NOT IN CONTRACT	N.I.C.	STEEL	STL.
BUILDING	BLDG.	GENERAL GENERATOR	G.G.	NOT TO SCALE	N.T.S.	STORAGE	STOR.
		GENERAL CONTRACTOR(OR)	G.C.	NUMBER	NO.	STORAGE CLOSET	ST. CL.
CARPET	CPT.	GLASS, GLAZING	GL.				
CEILING	CLG.	GRADE	GR.	OFFICE	OFF.	TOTAL LOAD	TL.
CENTERLINE	C.	GYP/SUM WALLBOARD	G.W.B./GYP. BD.	ON CENTER	O.C.	TOP OF PECK	T.O.P.
CERAMIC	CER.	GROUND FAULT INTERRUPTER	G.F.I.	OPENING	OPNG.	TOP OF FOOTING	T.O.F.
CERAMIC TILE	C.T.			OUTSIDE DIAMETER (DIMENSION)	O.D.	TOP OF MASONRY	T.O.M.
COATS	C.TS.	HARDWARE	H.W./H.W'R.	OVERHEAD	O.H.	TOP OF PIER	T.O.P.
COLD WATER	C.W.	HARDWOOD	H.WD.			TOP OF SLAB	T.O.S.
COLUMN	COL.	HEATING/VENTILATING/AIR	H.V.A.C.	PAINT	PT.	TOP OF STEEL	T.O.STL.
CONCRETE	CONC.	CONDITIONING	C.M.U.	PAINTED	PTD.	TOP OF WALL	T.O.W.
CONCRETE MASONRY UNIT	C.M.U.	HEIGHT	HT.	PARTITION	PARTN.	TYPICAL	TYP.
CONTINUOUS/CONTINUE	CONT.	HIGH POINT	H.P.	PARALLEL STRAND LUMBER	P.S.L.	TREAD	T.
CONTRACTOR	CONTR.	HOLLOW CORE	H.C.	PLASTER	PLAS.		
CONTROL JOINT	C.J.	HOLLOW METAL	H.M.	PLASTIC LAMINATE	PLAM.	UNDERWRITERS LABORATORIES	U.L.
CLEAN OUT	C.O.	HOLLOW METAL FRAME	H.M.F.	PLATE	PL.	UNFINISHED	UNF.
		HOSE BIB	H.B.	PLUMBING	PLBG.	UNIFORM BUILDING CODE	U.B.C.
DEAD LOAD	DL	HOT WATER	H.W.	POLYVINYL CHLORIDE	P.V.C.	VINYL COMPOSITION TILE	V.C.T.
DEMOLISH, DEMOLITION	DEMO.	HOUR	HR.	POUNDS PER CUBIC FOOT	P.C.F.	VINYL WALL COVERING	V.W.C.
DIAMETER	DIA./Ø			POUNDS PER LINEAL FOOT	P.L.F.	VERTICAL	VERT.
DIFFUSER	DIFF.	INSULATION	INSUL.	POUNDS PER SQUARE FOOT	P.S.F.	VESTIBULE	VEST.
DIMENSION	DIM.	INTERIOR	INT.	POUNDS PER SQUARE INCH	P.S.I.	VERIFY IN FIELD	V.I.F.
DOWN	DN.	INVERT	INV.	PREFABRICATED	PREFAB.		
DITTO	DTTO	JOINT	JT.	QUARRY TILE	Q.T.	WATER CLOSET	W.C.
						WEATHERPROOF	W.P.
EQUAL	EQ.	LAMINATE(D)	LAM.	RADIUS	RAD.	WELDED WIRE FABRIC	W.W.F.
EQUIP.	EQUIP.	LAMINATED VENEER LUMBER	L.V.L.	REFERENCE	REF.	WELDED WIRE MESH	W.W.M.
EXISTING	EXIST./EXIST'G	LAVATORY	LAV.	REINFORCE, REINFORCING	REINFP.	WIRE GLASS	W.G.L.
EXTERIOR	EXT.	LIVE LOAD	LL.	REQUIRED	REQ./REQ'D.	WITHOUT	W/O
		LOUVER	LVR./LOUV.	RISER	R.	WOOD	WP.
FLOOR CLEAN OUT	F.C.O.			ROUGH OPENING	R.O.		
FEET, FOOT	FT.	MAINTENANCE/MAINTAIN	MAINT./MANUP.				
FINISH	FIN.	MANUFACTURER	MFR./MANUF.				
FINISH FLOOR	FF.						

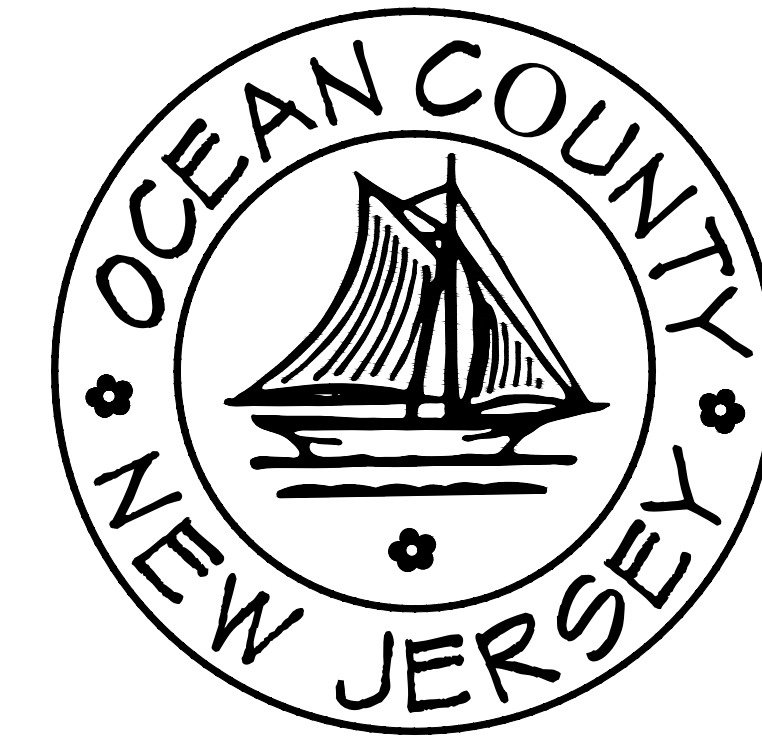
NOTE: THIS LIST REPRESENTS ABBREVIATIONS THAT MAY OR MAY NOT APPEAR IN THESE DOCUMENTS. CONTACT YEZZI ASSOCIATES FOR ANY CLARIFICATIONS REGARDING THE ABBREVIATIONS

SYMBOL KEY

	DETAIL CALLOUT		ROOM IDENTIFICATION		COLUMN MARK
	SECTION CALLOUT		DOOR CALLOUT		EXIST'G ENTITY TO REMAIN
	EXTERIOR ELEVATION CALLOUT		EXTERIOR WINDOW CALLOUT		WALL TYPE KEY
	INTERIOR ELEVATION CALLOUT		INTERIOR WINDOW CALLOUT		ELEVATION MARK
	NORTH ARROW				

GENERAL NOTES

- DO NOT SCALE DRAWINGS.
- FIELD CHECK ALL DIMENSIONS PRIOR TO THE START OF CONSTRUCTION.
- WHERE THERE MAY BE A CONFLICT BETWEEN THE DRAWINGS AND THE ACTUAL FIELD CONDITIONS, THE CONTRACTOR SHALL NOTIFY THE ARCHITECTS WHO WILL MAKE THE NECESSARY REVISIONS.
- PLANS TO CONFORM WITH THE STRUCTURE REQUIREMENTS OF THE INTERNATIONAL BUILDING CODE, LATEST EDITION.
- ALL EXISTING WORK TO REMAIN MUST BE PROTECTED. ANY SUCH WORK DAMAGED IN THE COURSE OF CONSTRUCTION WILL BE REPAIRED OR REPLACED BY THE CONTRACTOR AT HIS EXPENSE.
- ALL ITEMS TO BE REMOVED AND REUSED THAT ARE DAMAGED AND NOT REUSABLE SHALL BE REPLACED BY THE CONTRACTOR AT HIS OWN EXPENSE.
- AT THE END OF EACH WORKING DAY THE CONTRACTOR SHALL REMOVE ALL CONSTRUCTION RUBBLE FROM THE SITE.
- ALL ITEMS MARKED ON THE DRAWINGS TO BE REMOVED SHALL ALSO MEAN PATCH TO MATCH SURROUNDING CONDITIONS.
- ALL TRADES TO COORDINATE THEIR WORK SO THERE WILL BE NO DUPLICATION OF WORK.
- ALL TRADES TO DO THEIR OWN CUTTING AND PATCHING UNLESS OTHERWISE NOTED ON THE DRAWINGS.
- THE CONTRACTOR SHALL EXAMINE ALL EXISTING CONDITIONS PRIOR TO BIDDING AND STARTING CONSTRUCTION & TAKE PHOTOGRAPHS OF ALL EXISTING CONDITIONS. ANY ALTERATIONS TO EXISTING STRUCTURE REQUIRED FOR PROPER INSTALLATION OF NEW WORK SHALL BE DONE BY THE CONTRACTOR AT HIS OWN EXPENSE, BUT ONLY AS APPROVED BY THE ARCHITECT.
- ALL EXISTING UTILITIES IN CONFLICT WITH THE WORK SHALL BE TURNED OFF BY THE CONTRACTOR / UTILITY COMPANIES PRIOR TO START OF DEMOLITION / CONSTRUCTION.
- AS PER STATE ORDINANCE, PRIOR TO ANY START OF CONSTRUCTION, THE CONTRACTOR SHALL NOTIFY ADJACENT PROPERTY OWNERS OF SAID PROPOSED NEW CONSTRUCTION, ADDITION OR ALTERATIONS, TO THE PROPERTY IN QUESTION. THE CONTRACTOR SHALL PROVIDE WRITTEN CERTIFICATION OF NOTICE. COPY OF SAID CERTIFICATION SHALL BE PROVIDED TO THE LOCAL BUILDING DEPARTMENT FOR REVIEW AS PART OF THE BUILDING PERMIT APPLICATION PROCESS.
- RELOCATE ELECTRICAL SERVICE - BY CONTRACTOR - (PROVIDE NEW 2" METAL CONDUIT FEED). ALL INFORMATION TECHNOLOGY BY EXCEPT CONDUIT BY OWNER. CONTRACTOR TO PROVIDE 3" METAL CONDUIT FEED AS INDICATED ON DRAWINGS. (TYP.)



OCEAN COUNTY BOARD OF CHOSEN FREEHOLDERS

JOSEPH H. VICARI FREEHOLDER DIRECTOR
GARY QUINN FREEHOLDER DEPUTY DIRECTOR
VIRGINIA E. HAINES FREEHOLDER
JOHN P. KELLY FREEHOLDER
GERRY P. LITTLE FREEHOLDER

CARL W. BLOCK ADMINISTRATOR
MICHAEL J. FIURE ASSISTANT ADMINISTRATOR
DIRECTOR OF MANAGEMENT & BUDGET

JOSEPH J. MEYERS SUPERINTENDENT OF BUILDINGS & GROUNDS

INDEX OF DRAWING'S

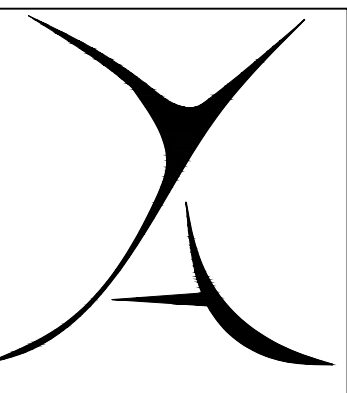
1	COVER	COVER SHEET, PROJECT DATA, & CODE RESEARCH
2	D-1	EXISTING CONDITIONS PHOTOGRAPHS
3	A-1	FLOOR PLAN AND ELECTRICAL LIGHTING PLAN
4	A-2	ELEVATIONS, SECTIONS, DOOR DETAILS AND WINDOW DETAILS
5	E-1	ELECTRICAL GENERAL NOTES
6	E-2	ELECTRICAL CONSTRUCTION PLANS

SCOPE OF WORK

- PROVIDE NEW SECURITY BOOTH AT PARKING GARAGE AS INDICATED ON DRAWINGS.
- PREPARE AREA WHICH IS NOW PARKING SPACES FOR NEW SECURITY OFFICE.
- LIMITED HVAC SYSTEM.
- NO PLUMBING.
- TIE ELECTRICAL SERVICE TO EXISTING SYSTEM.
- INFORMATION TECHNOLOGY BY COUNTY AND GENERAL CONTRACTOR AS INDICATED ON PLANS - GENERAL CONTRACTOR TO PROVIDE METAL CONDUIT FEED LINES AS WELL.

BID SET

JUNE 16, 2020
YEZZI ASSOCIATES
ARCHITECTS PLANNERS



ARCHITECTURE

PLANNING
ENGINEERING
INTERIORS
MANAGEMENT
13 Washington Street
P.O. Box 1433
Toms River, NJ 08754
Tel: 732-240-3433
Fax: 732-240-3433
E-mail: info@yezziassociates.com
Website: www.yezziassociates.com

Massimo Franco Yezzi, Jr.
Architect No. C74716 -NJ
Planner No. 2368 -NJ
Architect No. 010302 -NY
Architect No. 012705 -PA
Architect No. 71460 -CT
Architect No. 0475 -NC
Architect No. 5075 -SC
Architect No. 03304 -FL
Architect No. 0755 -NV
Architect No. 0787-005 -WIS
Architect No. 50914 -NCARB
Architect No. 5022377 -AIA

Daniel M. Serratto
Architect No. 21801007000 -NJ
Architect No. 73072 -NCARB

Progress Set	
04/27/2020	DS
02/10/2020	CP
By	
Not For Construction	

PROPOSED NEW SECURITY OFFICE AT:
OCEAN COUNTY
PARKING GARAGE
MADISON AVENUE
OCEAN COUNTY
TOMS RIVER
NEW JERSEY

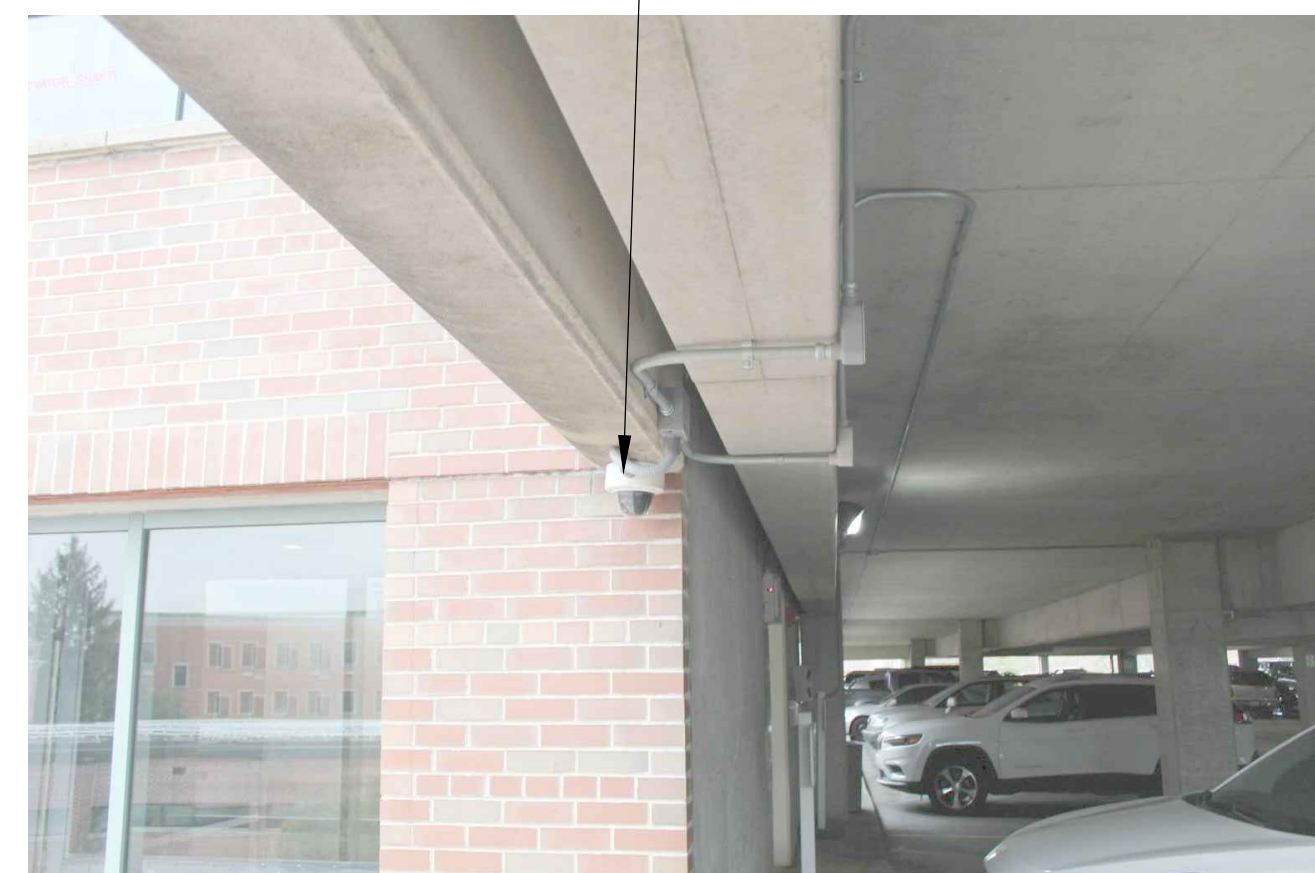
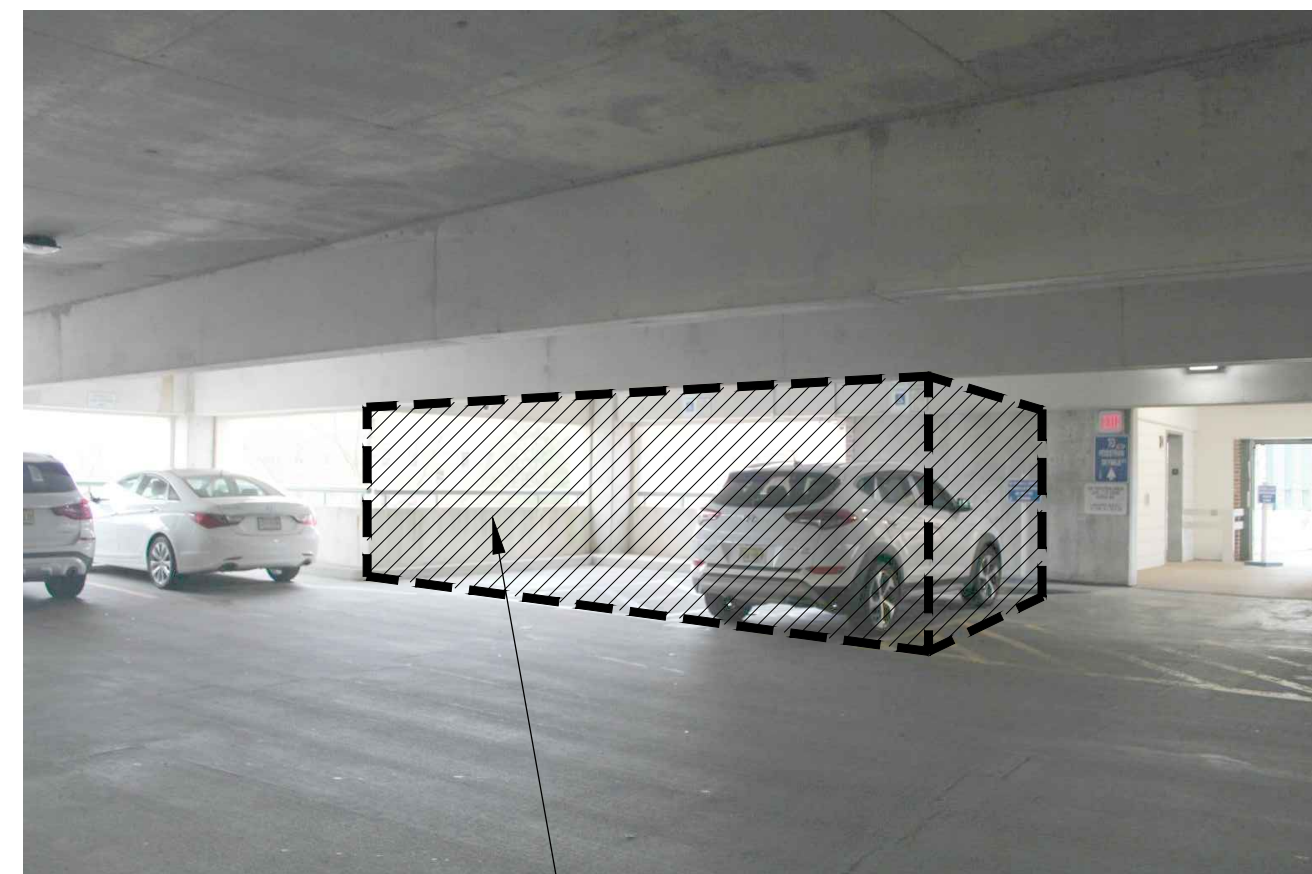
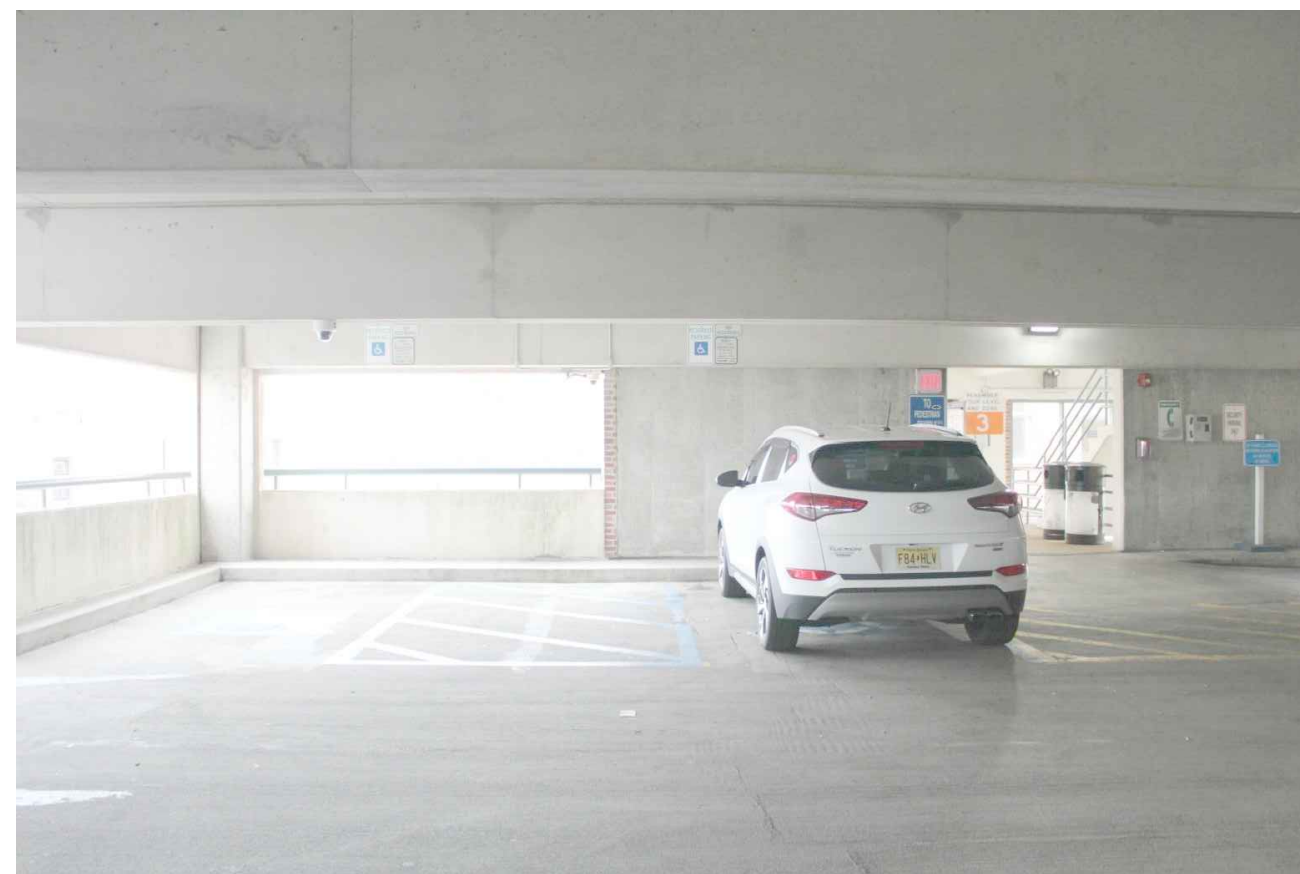
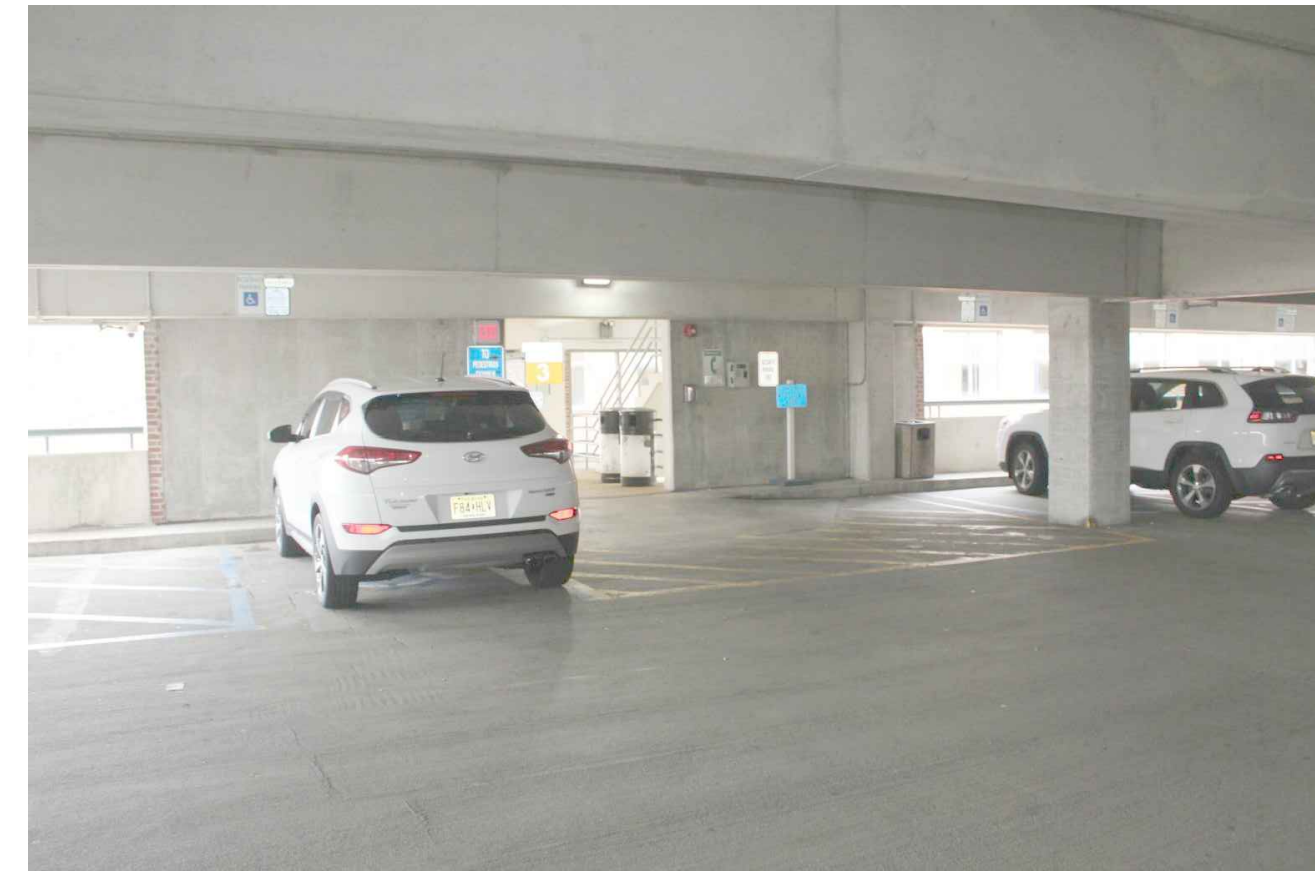
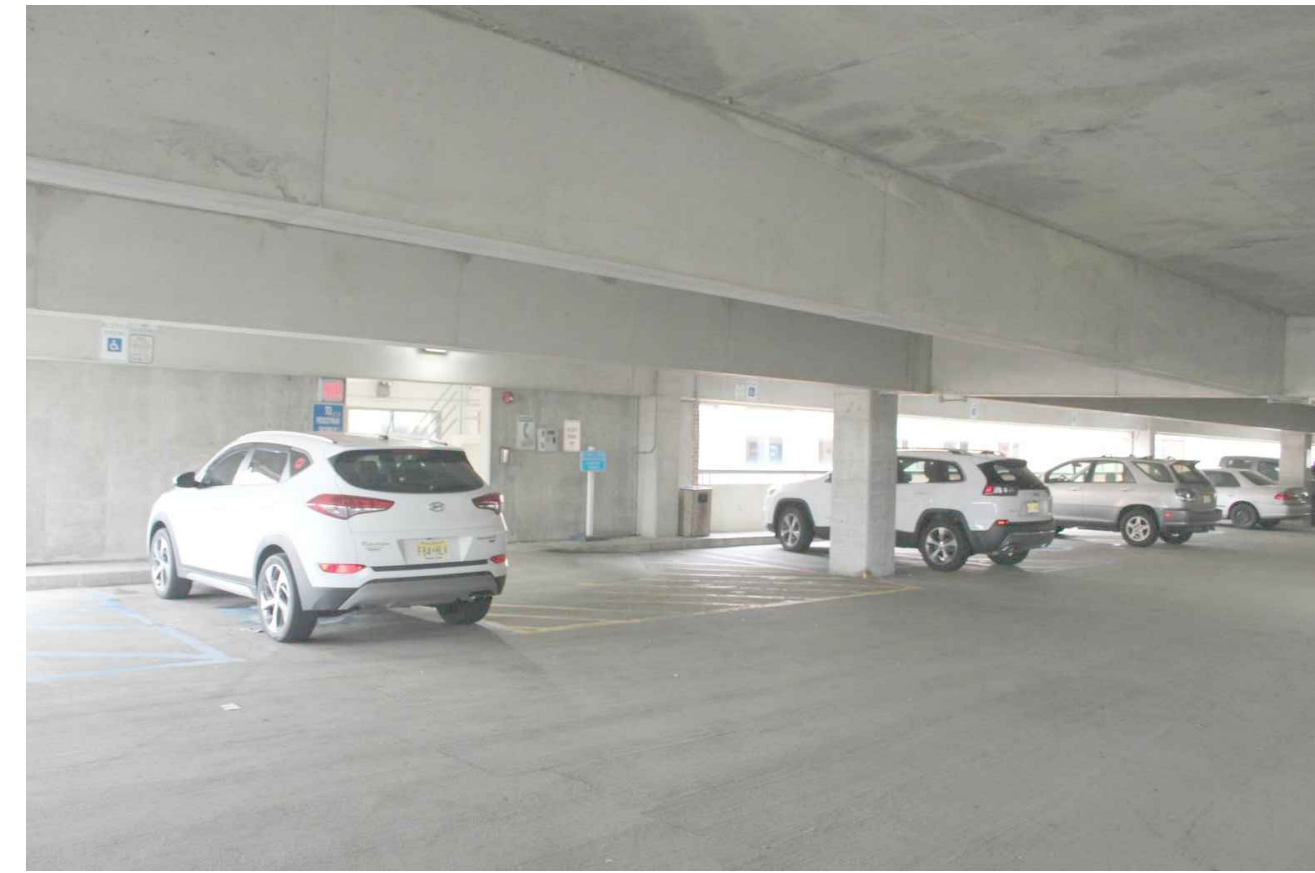
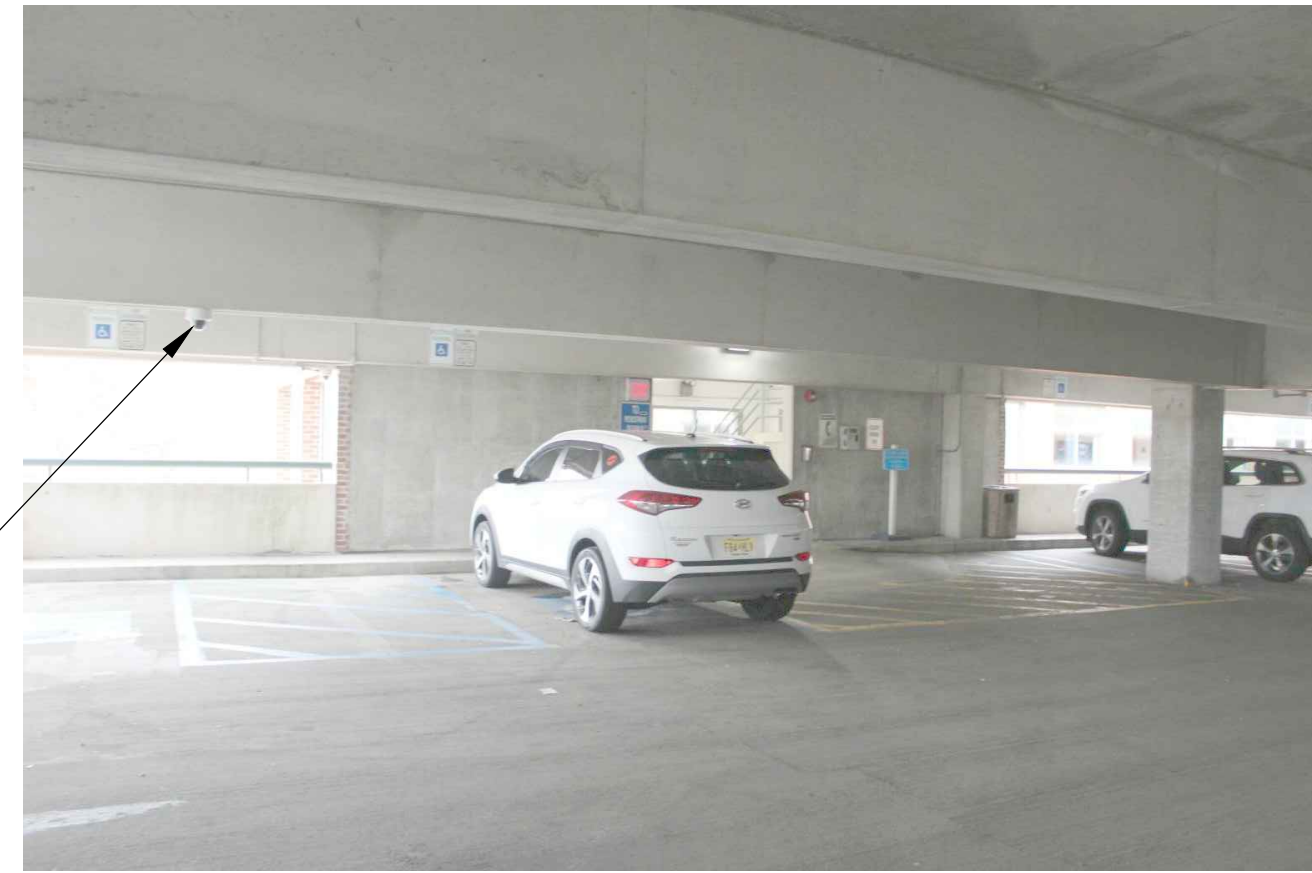
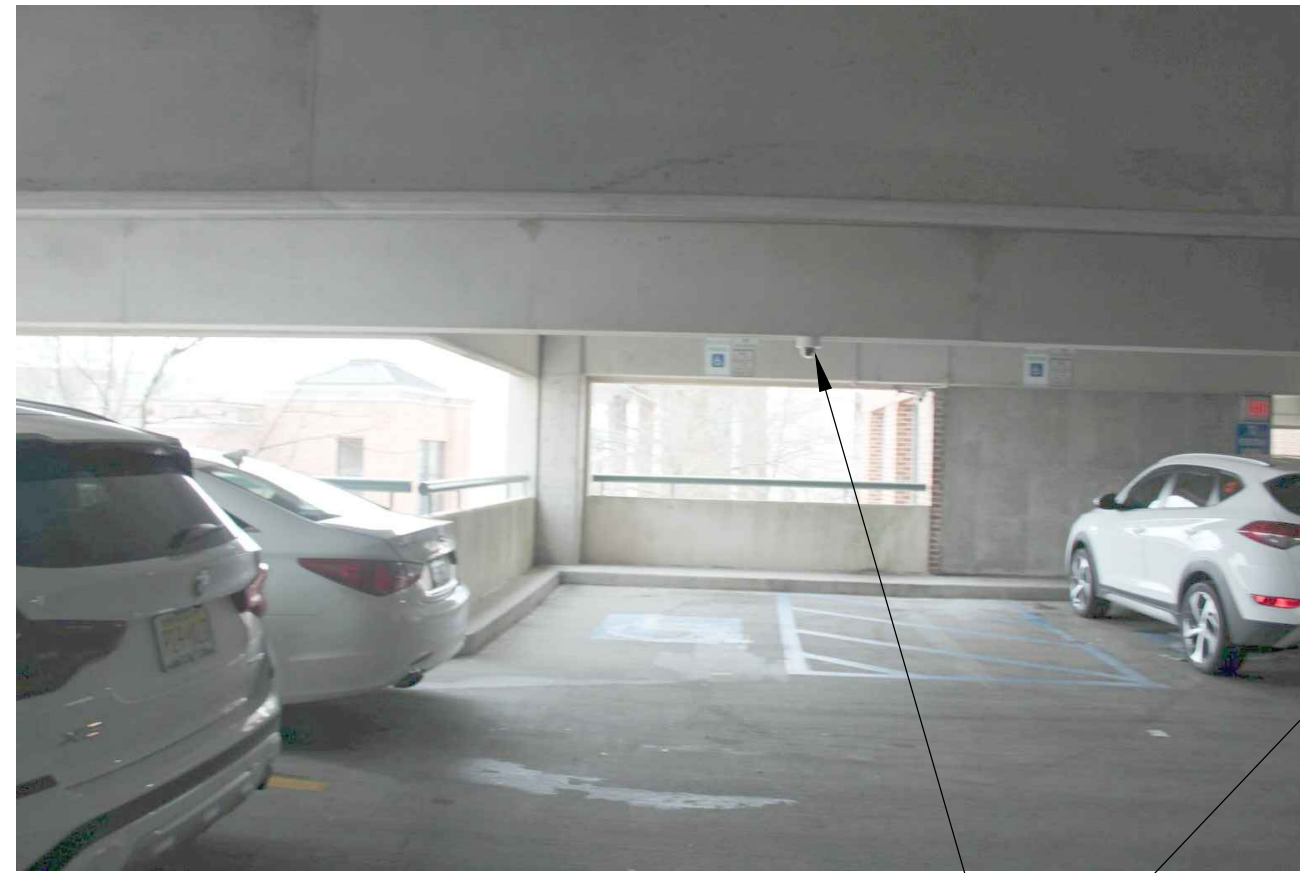
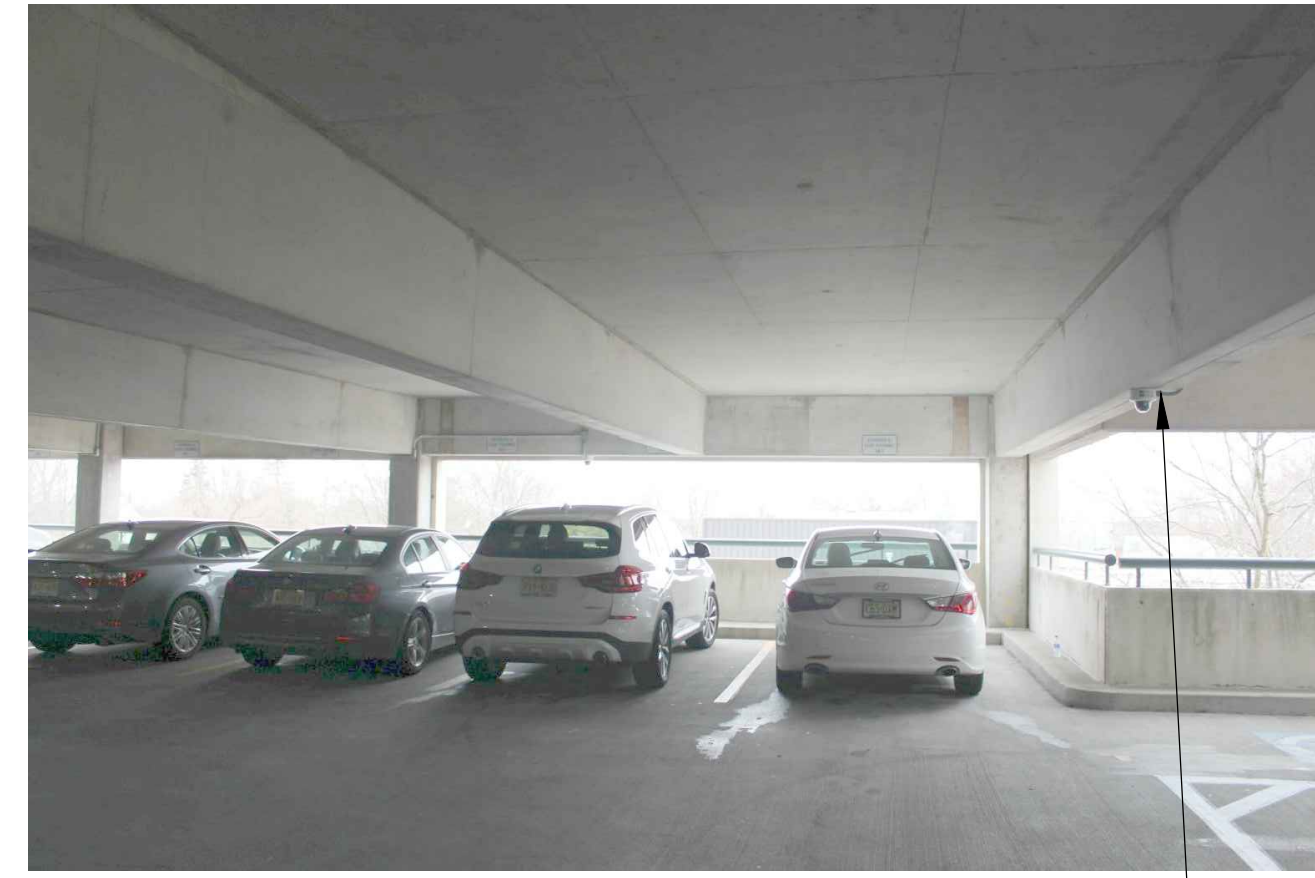
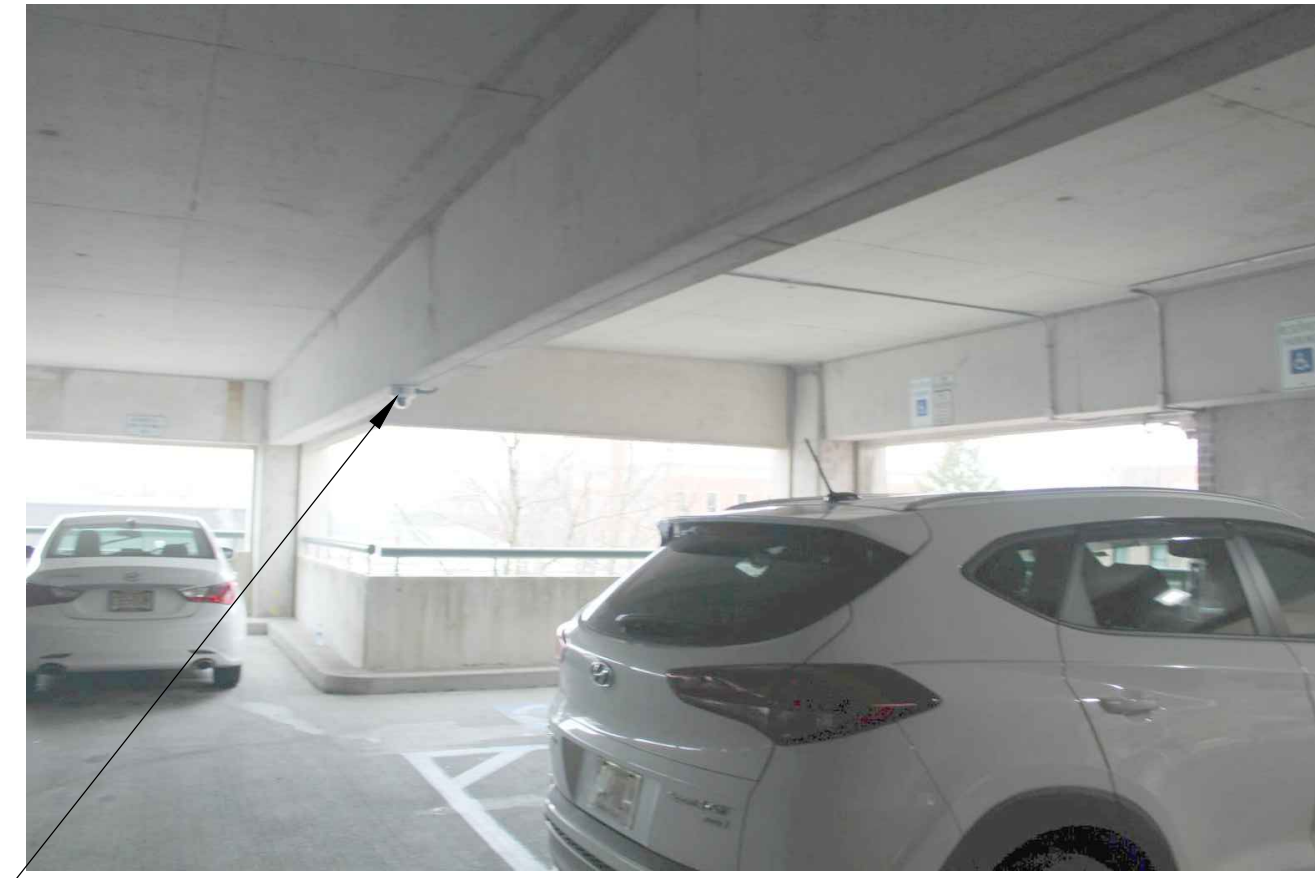
Project No. 6/2/2020

Revised By Date

Sheet Title: COVER SHEET PROJECT DATA & CODE RESEARCH
Drawn By: CP
Checked By: MPY
Sheet No. 6

Project No. Y0103

COVER



ALL EXISTING CAMERA AND ELECTRICAL FEEDS ARE TO BE RELOCATED TO ALLOW FOR NEW SECURITY BOOTH. CONSTRUCTION CONTRACTOR TO COORDINATE ALL ELECTRICAL, DATA AND CAMERA SERVICE INTERRUPTIONS WITH BUILDINGS AND GROUNDS PRIOR TO DISCONNECTING. (TYP.)

ALL EXISTING CAMERA AND ELECTRICAL FEEDS ARE TO BE RELOCATED TO ALLOW FOR NEW SECURITY BOOTH. CONSTRUCTION CONTRACTOR TO COORDINATE ALL ELECTRICAL, DATA AND CAMERA SERVICE INTERRUPTIONS WITH BUILDINGS AND GROUNDS PRIOR TO DISCONNECTING. (TYP.)

ALL EXISTING CAMERA AND ELECTRICAL FEEDS ARE TO BE RELOCATED TO ALLOW FOR NEW SECURITY BOOTH. CONSTRUCTION CONTRACTOR TO COORDINATE ALL ELECTRICAL, DATA AND CAMERA SERVICE INTERRUPTIONS WITH BUILDINGS AND GROUNDS PRIOR TO DISCONNECTING. (TYP.)

AREA OF NEW SECURITY BOOTH - REFER TO PLANS FOR ADDITIONAL INFORMATION (TYP.)

EXISTING RAILING TO BE REMOVED - CONTRACTOR TO PATCH ALL HOLES AND INSTALL NEW PRECAST CONC. SILL - SEE PROPOSED SECTION (TYP.)

ALL EXISTING CAMERA AND ELECTRICAL FEEDS ARE TO BE RELOCATED TO ALLOW FOR NEW SECURITY BOOTH. CONSTRUCTION CONTRACTOR TO COORDINATE ALL ELECTRICAL, DATA AND CAMERA SERVICE INTERRUPTIONS WITH BUILDINGS AND GROUNDS PRIOR TO DISCONNECTING. (TYP.)

1 EXISTING CONDITIONS PHOTOGRAPHS
D-1 SCALE: N.T.S.

NOTE
THE PHOTOGRAPHS INDICATED ON THESE DRAWINGS ARE FOR REFERENCE ONLY TO INDICATE THE EXISTING BUILDING CONDITIONS AT THE TIME OF OUR FIELD INSPECTION. ALL DEMOLITION REQUIRED TO SUCCESSFULLY COMPLETE THIS PROJECT SHALL BE INCLUDED IN THE GENERAL CONTRACTOR'S SCOPE OF WORK. THE GENERAL CONTRACTOR IS TO COORDINATE THE EXTENT OF DEMOLITION WITH THE ENTIRE SET OF DRAWINGS AND FIELD CONDITIONS.

Do Not Scale Drawings - Field check all dimensions prior to start of construction.



ARCHITECTURE
PLANNING
ENGINEERING
INTERIORS
MANAGEMENT

13 Washington Street
Trenton, NJ 08646
Tel: 732-240-3433
Fax: 732-240-3469
E-mail: info@yezziassociates.com
Website: www.yezziassociates.com

Massimo Franco Yezzi, Jr.
Architect No. C 71716 -NJ
Planner No. 2368 -NJ
Architect No. 010302 -NY
Architect No. 0127005 -PA
Architect No. 71460 -CT
Architect No. 04475 -NC
Architect No. 5075 -SC
Architect No. 08304 -FL
Architect No. 0755 -NV
Architect No. 0787-005 -WISG
Architect No. 50514 -NCARB
Architect No. 3022377 -AIA

Daniel M. Serrotto
Architect No. 21A01007000 -NJ
Architect No. 73072 -NCARB

Progress Set	
04/27/2019	DS
02/10/2020	CP
Title	By
Title	By
Not For Construction	
Signature	Date

PROPOSED NEW SECURITY OFFICE AT:
**OCEAN COUNTY
PARKING GARAGE**
TOMAS RIVER
NEW JERSEY

Project Bld Date
6/2/2020

Sheet Title
EXISTING CONDITIONS PHOTOGRAPHS

Drawn By	2
CP	CP
CHK'd By	6
MPY	

Sheet No.
D-1

Project No.
Y08103

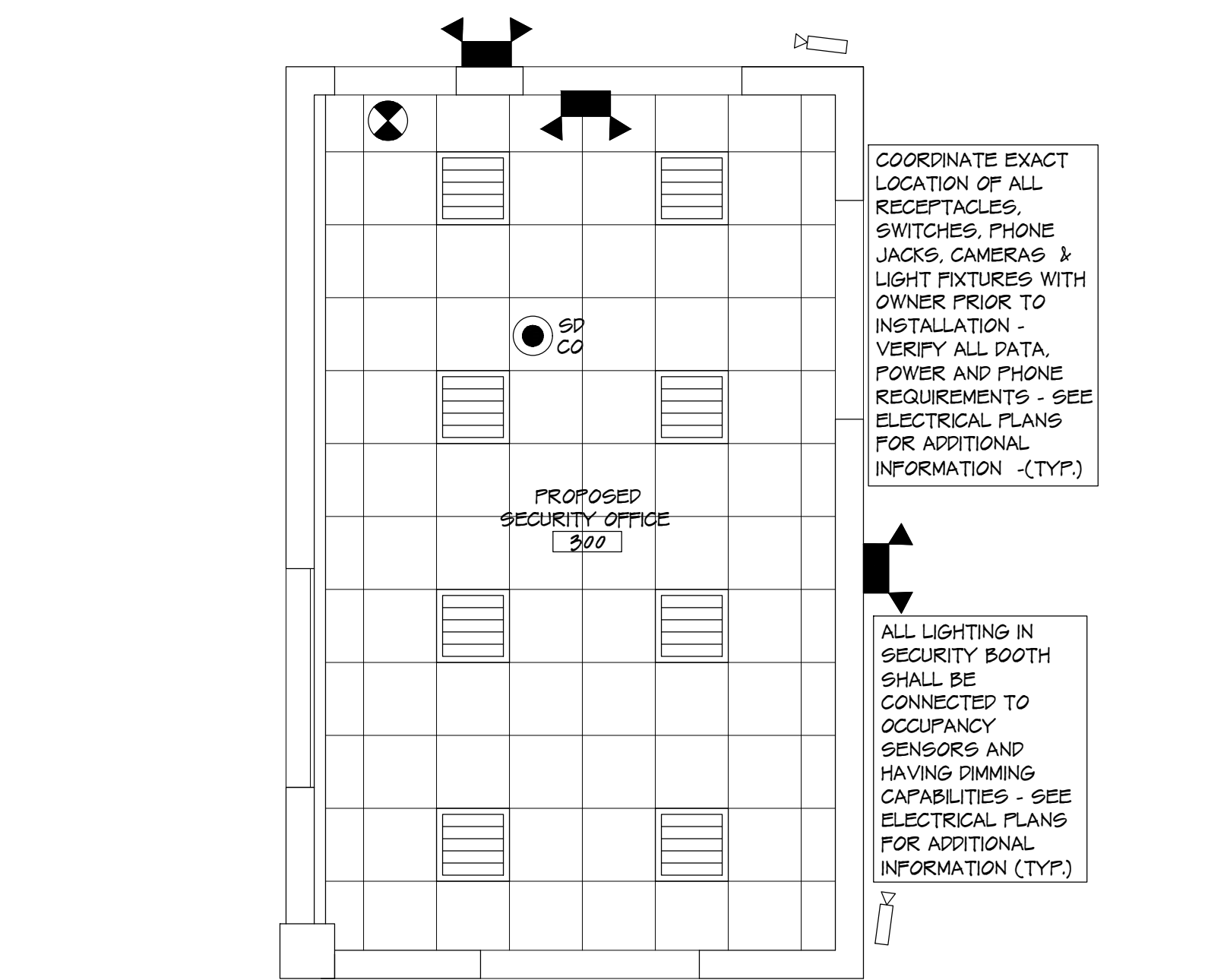
OWNERSHIP OF DOCUMENTS: The documents, ideas and designs incorporated herein, are instruments of professional service and are the property of Yezzi Associates and are not to be used, copied or reproduced in whole or in part without approval of Yezzi Associates. These documents have been reviewed with the client prior to being signed and sealed by Yezzi Associates to insure conformance with clients scope of work.

OWNERSHIP OF DOCUMENTS: The documents, ideas and designs incorporated herein, are instruments of professional service and are the property of Yezzi Associates and are not to be used, copied or reproduced in whole or in part without approval of Yezzi Associates. These documents have been prepared and sealed by Yezzi Associates to insure conformance with clients scope of work.

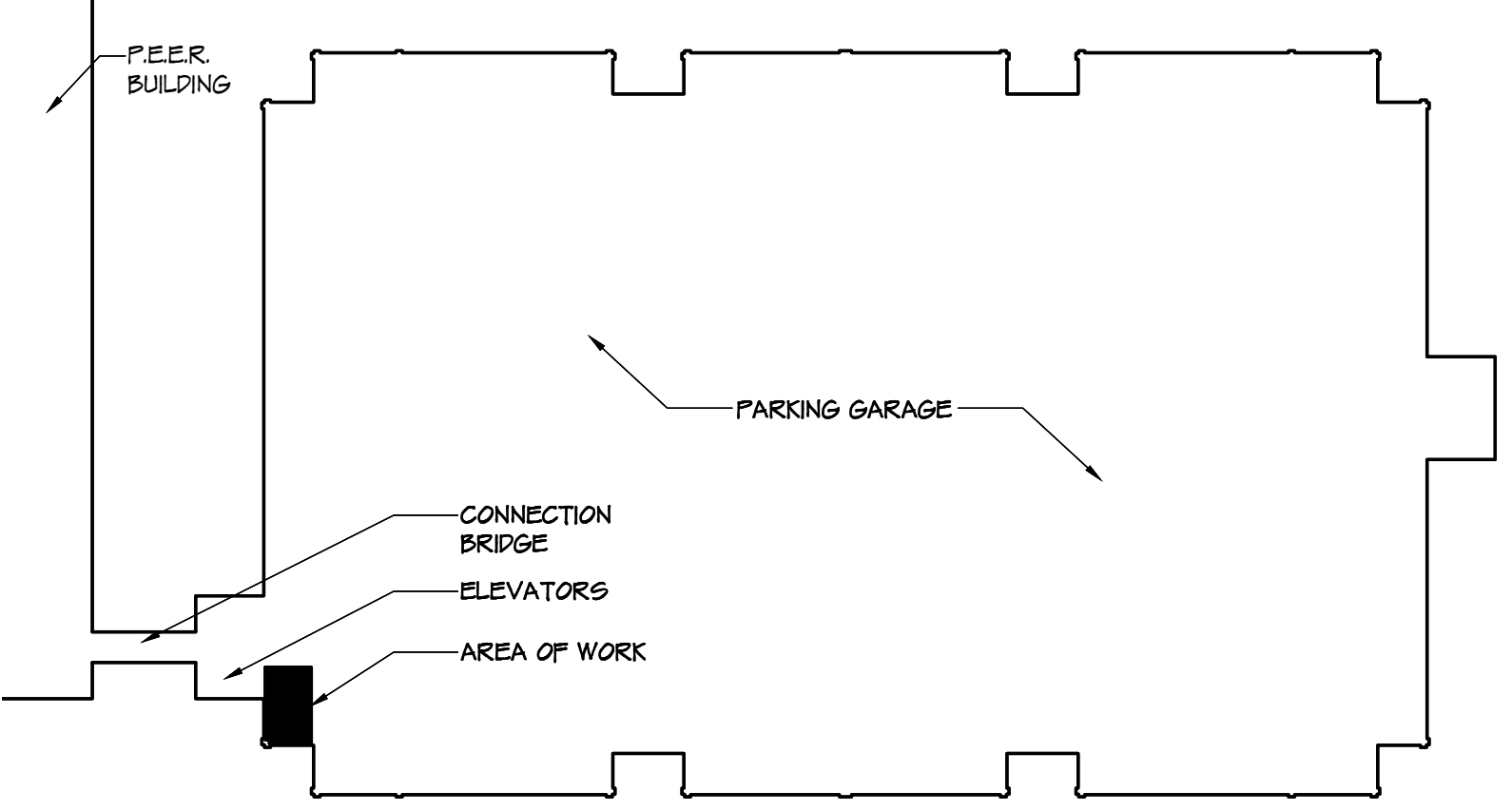
SYMBOL KEY

	6" 20 GA. METAL STUDS @ 16" O.C. W/ 1/2" PAINTED PENS GLASS OVER TYVEK OVER 2" RIGID INSULATION OVER R-10 BATT INSULATION - PROVIDE 1/8" IMPACT RESISTANT TYPE-X GYP. BD. AT INTERIOR FACE AND PRIME 1 COAT AND PAINT 2 COATS (TYP.)
	EXISTING WALL TO REMAIN (TYP.)
	2'-0" x 2'-0" x 5/8" ACOUSTICAL CEILING TILE AND GRID SYSTEM AS MANUFACTURED BY 'ARMSTRONG' MODEL #172B OR ARCHITECT APPROVED EQUAL SET AT 0'-0" ABOVE FINISHED FLOOR AS SELECTED BY OWNER. (TYP.)
	2'-0" x 2'-0" 3-LAMP LED LIGHT FIXTURE - SEE ELECTRICAL DRAWINGS FOR ADDITIONAL INFORMATION (TYP.)
	EXIT SIGN- A/C WIRED BATTERY BACK-UP UNIT WITH DIRECTIONAL ARROW KNOCK-OUTS. (TYP.)
	EMERGENCY LIGHT- A/C WIRED BATTERY BACK-UP UNIT (TYP.)
	COMBINATION SMOKE/CARBON MONOXIDE DETECTOR- A/C WIRED BATTERY BACK-UP UNIT.
	TV PROVIDED BY THE CONTRACTOR - SEE ELECTRICAL DRAWINGS FOR ADDITIONAL INFORMATION - PROVIDE BLOCKING AS REQUIRED FOR TV INSTALLATION (TYP.)
	VIDEO CAMERA - FIXED FLEXIDOME IP STARLIGHT 6000 VR HD 1080P NN-63023-A35 1080P POWER OVER ETHERNET TIED TO RACK MOUNTED SWITCH

NOTES:
1. COORDINATE EXACT LOCATION OF ALL RECEPTACLES, SWITCHES, PHONE JACKS, DATA PORTS AND LIGHT FIXTURES WITH OWNER PRIOR TO INSTALLATION - VERIFY ALL DATA, POWER AND PHONE REQUIREMENTS - SEE ELECTRICAL PLANS FOR ADDITIONAL INFORMATION (TYP.)
2. ALL EXISTING CAMERA AND ELECTRICAL FEEDS ARE TO BE RELOCATED TO ALLOW FOR NEW SECURITY BOOTH CONSTRUCTION. CONTRACTOR TO COORDINATE ALL ELECTRICAL, DATA, TELEPHONE AND CAMERA SERVICE INTERRUPTIONS WITH BUILDINGS AND GROUNDS AND I.T. DEPARTMENT PRIOR TO DISCONNECTING. (TYP.)



2 ARCHITECTURAL REFLECTED CEILING PLAN
SCALE: 1/4" = 1'-0"



KEY PLAN - THIRD FLOOR

IT SCOPE OF WORK

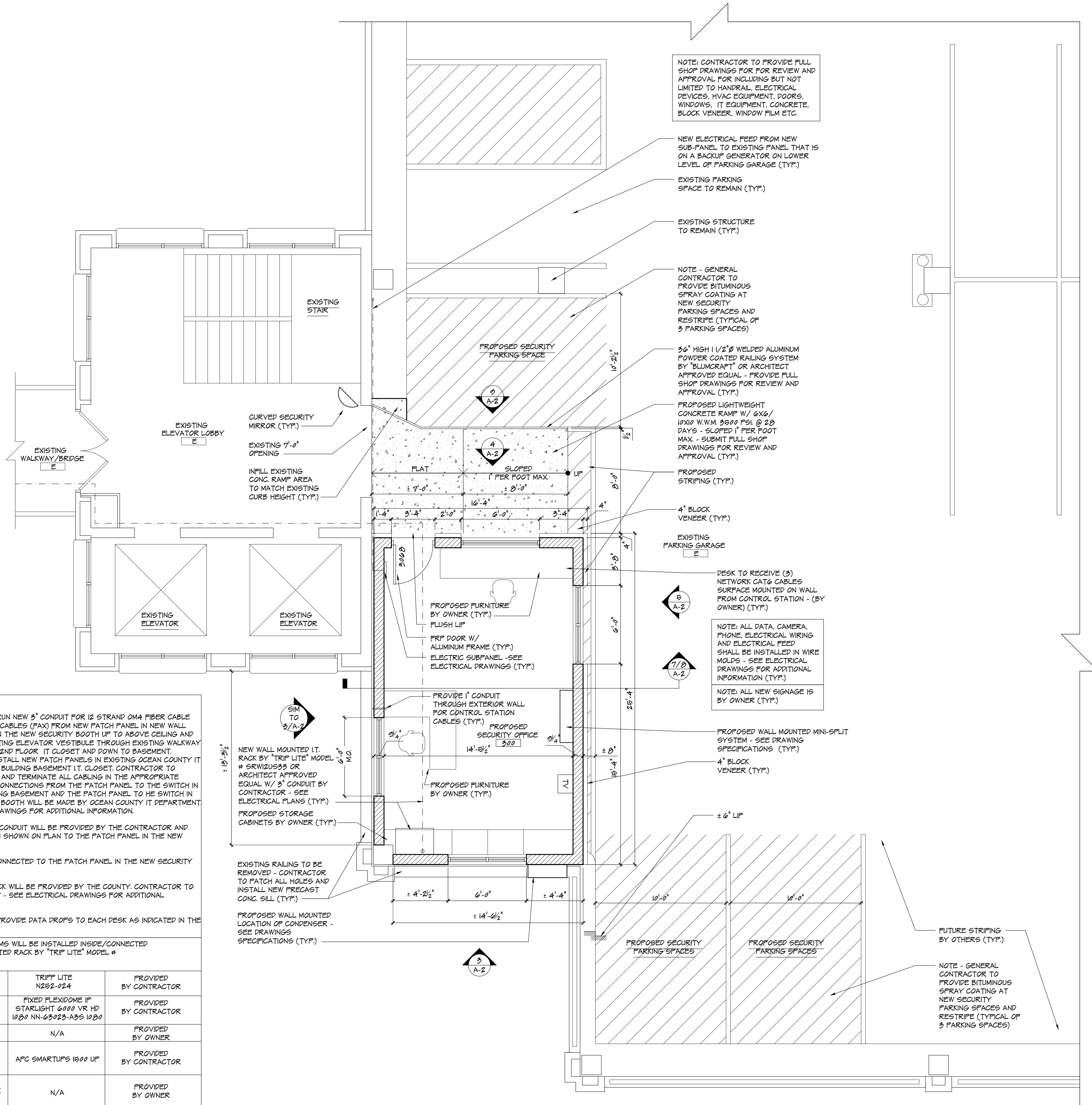
- CONTRACTOR TO RUN NEW 3" CONDUIT FOR 12 STRAND OMA FIBER CABLE (DATA) AND 3 CAT6 CABLES (FAX) FROM NEW PATCH PANEL IN NEW WALL MOUNTED I.T. RACK IN THE NEW SECURITY BOOTH UP TO ABOVE CEILING AND RUN THROUGH EXISTING ELEVATOR VESTIBULE THROUGH EXISTING WALKWAY TO PEER BUILDING 2ND FLOOR. IT CLOSET AND DOWN TO BASEMENT. CONTRACTOR TO INSTALL NEW PATCH PANELS IN EXISTING OCEAN COUNTY IT RACK IN THE PEER BUILDING BASEMENT I.T. CLOSET. CONTRACTOR TO INSTALL TIPS, TEST AND TERMINATE ALL CABLEING IN THE APPROPRIATE PATCH PANEL. ALL CONNECTIONS FROM THE PATCH PANEL TO THE SWITCH IN THE PEER'S BUILDING BASEMENT AND THE PATCH PANEL TO THE SWITCH IN THE NEW SECURITY BOOTH WILL BE MADE BY OCEAN COUNTY IT DEPARTMENT. SEE ELECTRICAL DRAWINGS FOR ADDITIONAL INFORMATION.
- ALL CAMERAS AND CONDUIT WILL BE PROVIDED BY THE CONTRACTOR AND RUN FROM LOCATION SHOWN ON PLAN TO THE PATCH PANEL IN THE NEW SECURITY BOOTH.
- THE TV WILL BE CONNECTED TO THE PATCH PANEL IN THE NEW SECURITY BOOTH.
- KRONOS TIME CLOCK WILL BE PROVIDED BY THE COUNTY. CONTRACTOR TO PROVIDE DATA DROP - SEE ELECTRICAL DRAWINGS FOR ADDITIONAL INFORMATION.
- CONTRACTOR TO PROVIDE DATA DROPS TO EACH DESK AS INDICATED IN THE ELECTRICAL PLAN.

THE FOLLOWING ITEMS WILL BE INSTALLED INSIDE/CONNECTED TO THE WALL MOUNTED RACK BY 'TRIP LITE' MODEL # SRW12533:

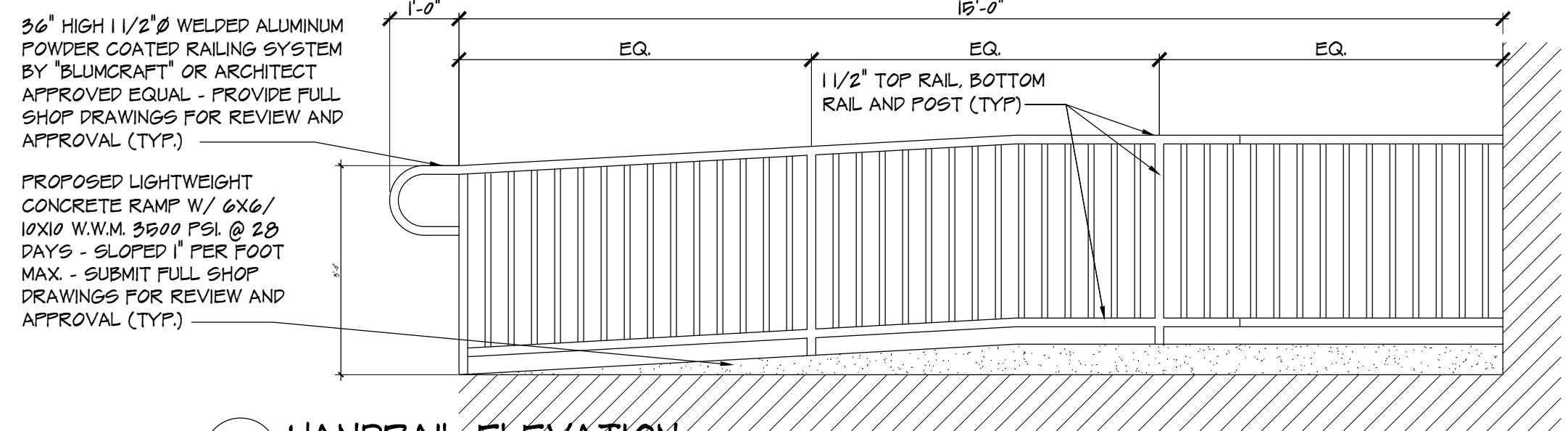
PATCH PANEL	TRIPP LITE N252-024	PROVIDED BY CONTRACTOR
CAMERAS	FIXED FLEXIDOME IP STARLIGHT 6000 VR HD 1080P NN-63023-A35 1080P	PROVIDED BY CONTRACTOR
SWITCH	N/A	PROVIDED BY OWNER
UPS	APC SMARTUPS 1500 UP	PROVIDED BY CONTRACTOR
KRONOS TIME CLOCK	N/A	PROVIDED BY OWNER

THE FOLLOWING ITEMS WILL BE INSTALLED INSIDE THE EXISTING I.T. RACK IN THE PEER'S BUILDING BASEMENT I.T. CLOSET:

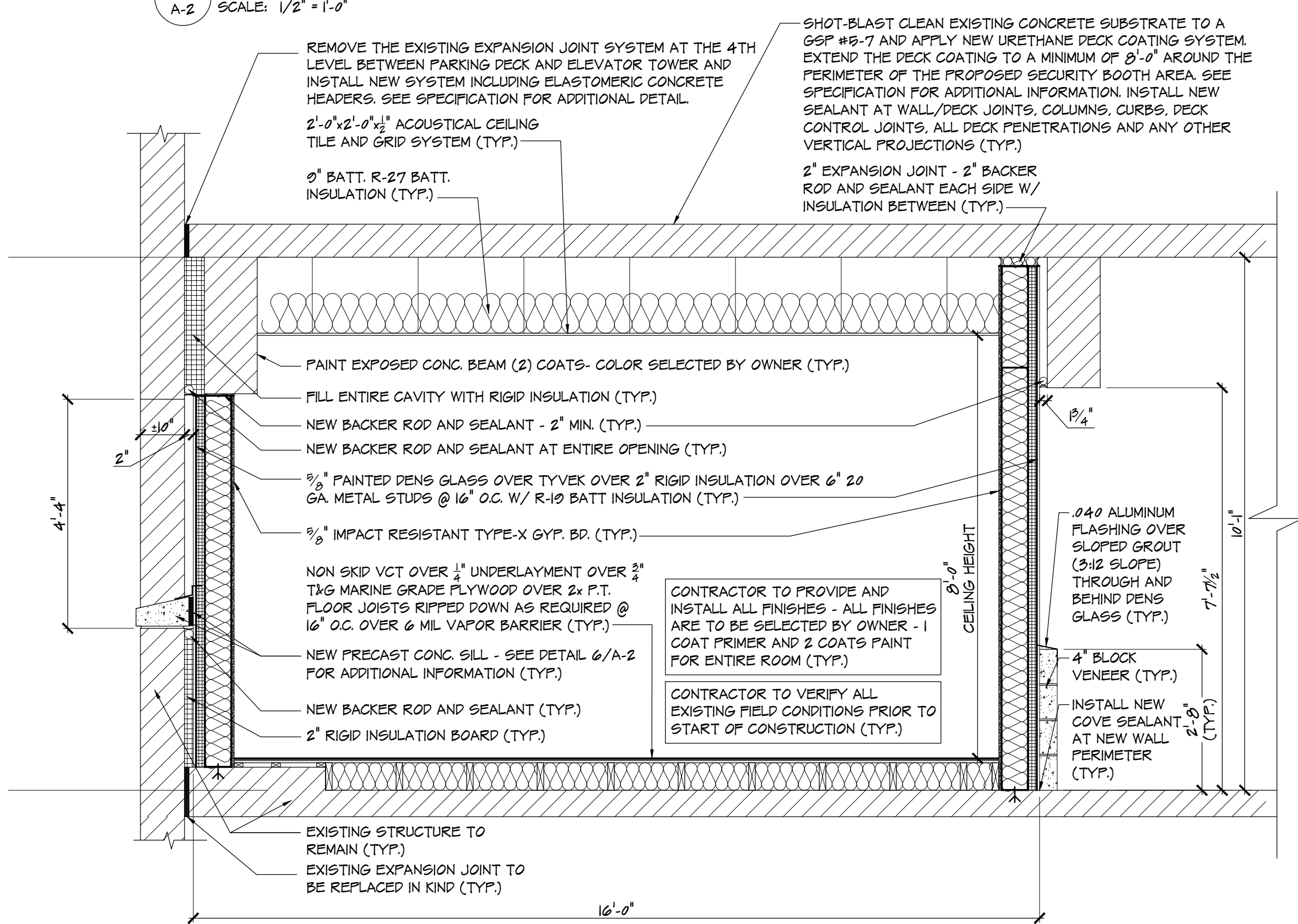
PATCH PANEL	TRIPP LITE N400-016-L0C	PROVIDED BY CONTRACTOR
-------------	-------------------------	------------------------



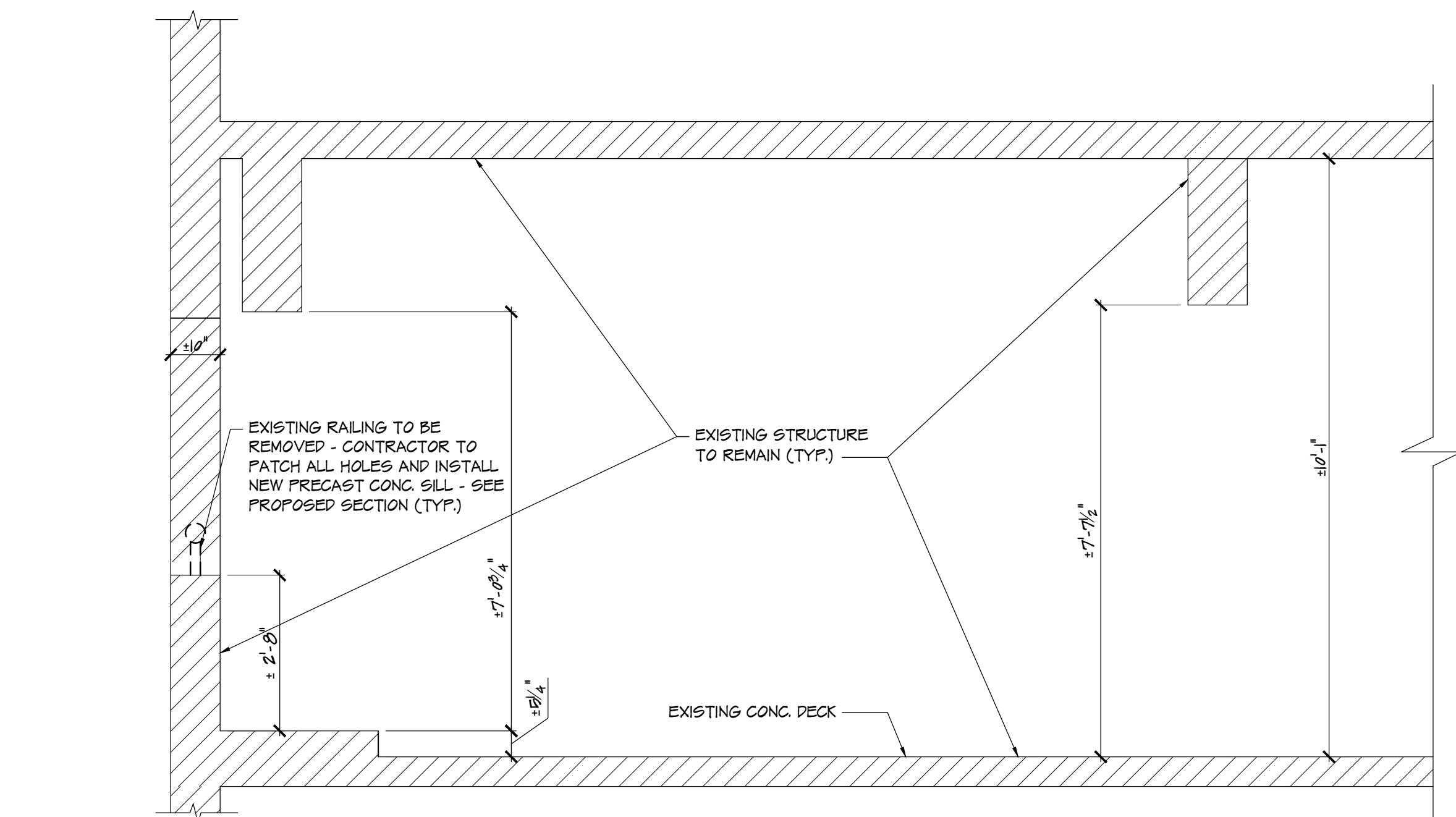
1 FLOOR PLAN
SCALE: 1/4" = 1'-0"



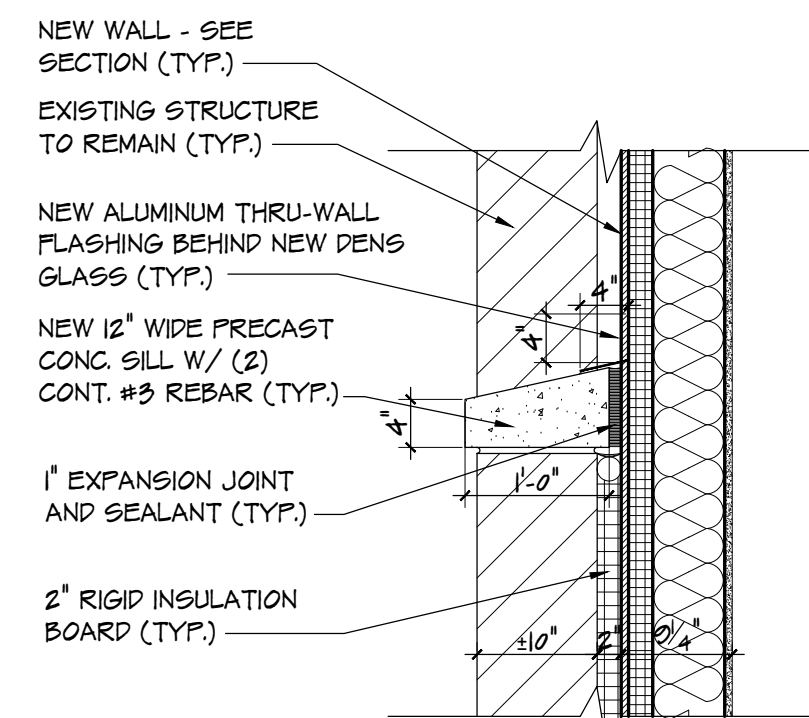
9 HANDRAIL ELEVATION
A-2 SCALE: 1/2" = 1'-0"



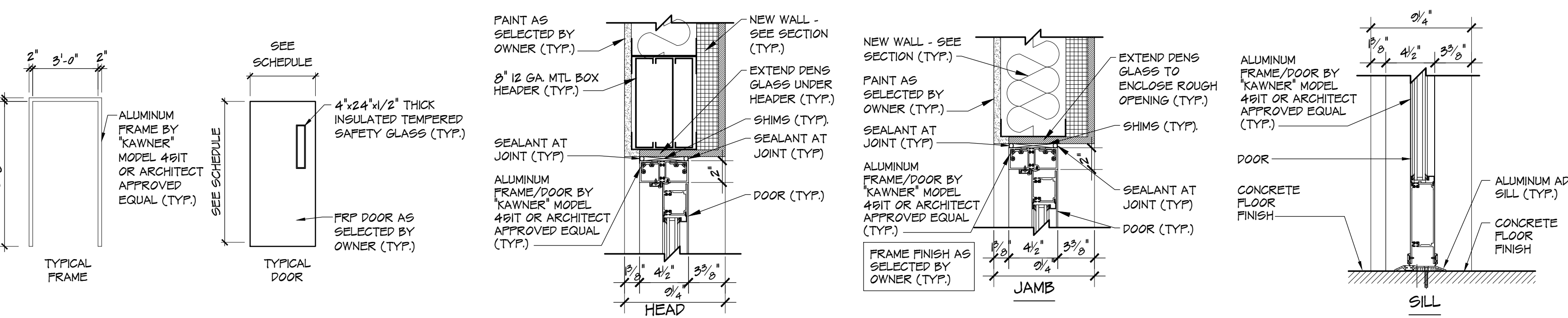
8 PROPOSED SECTION
A-2 SCALE: 1/2" = 1'-0"



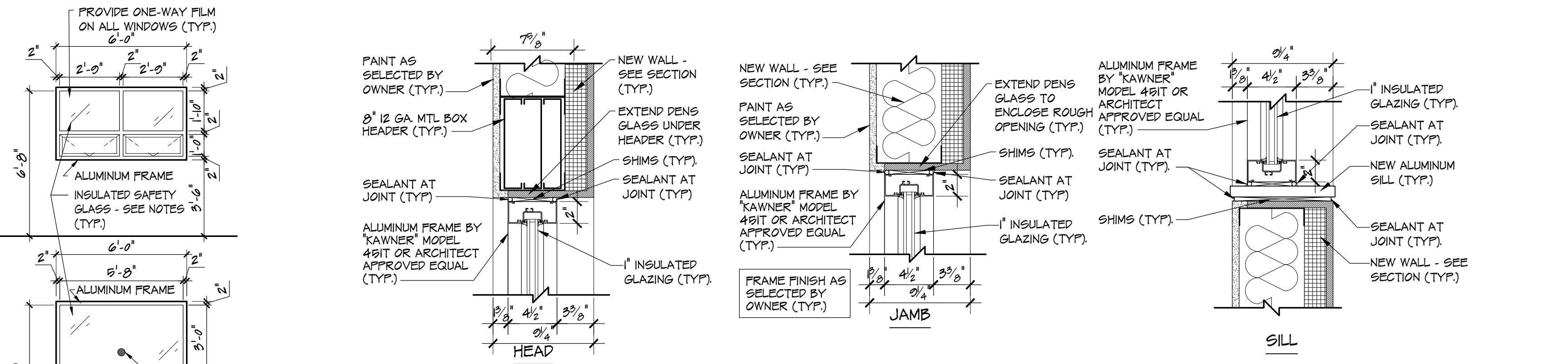
7 EXISTING CONDITIONS SECTION
A-2 SCALE: 1/2" = 1'-0"



6 TYPICAL CONC. SILL DETAIL
A-2 SCALE: 1/4" = 1'-0"

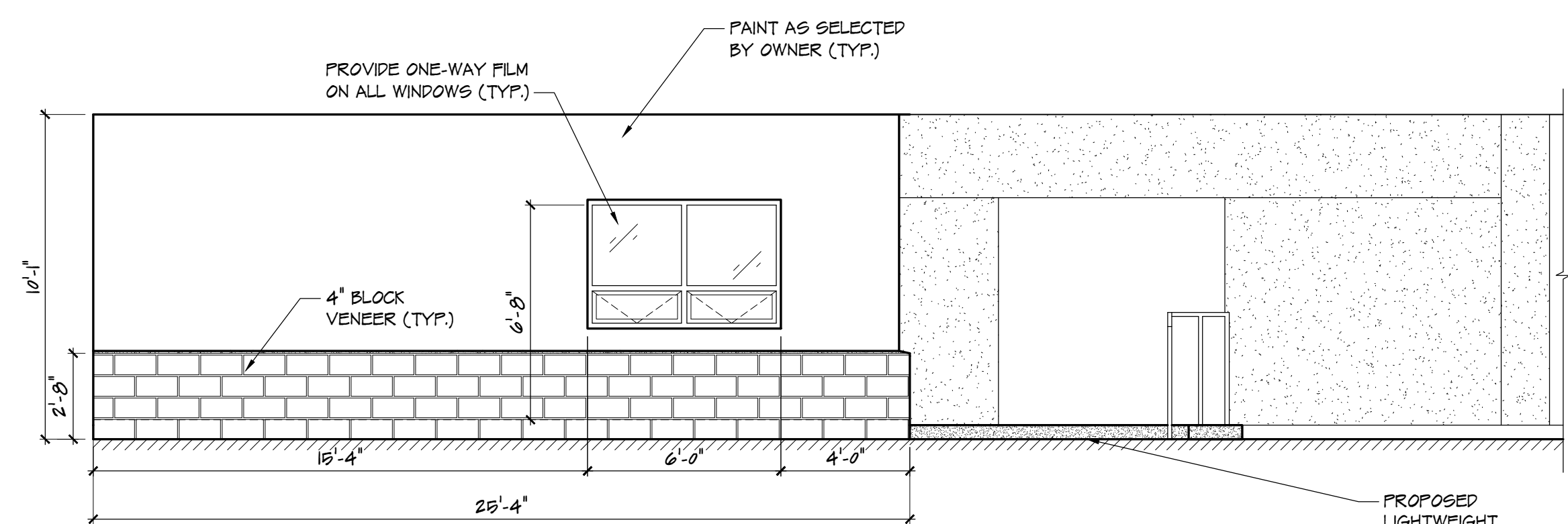


2 TYPICAL DOOR DETAILS
A-2 SCALE: N.T.S.

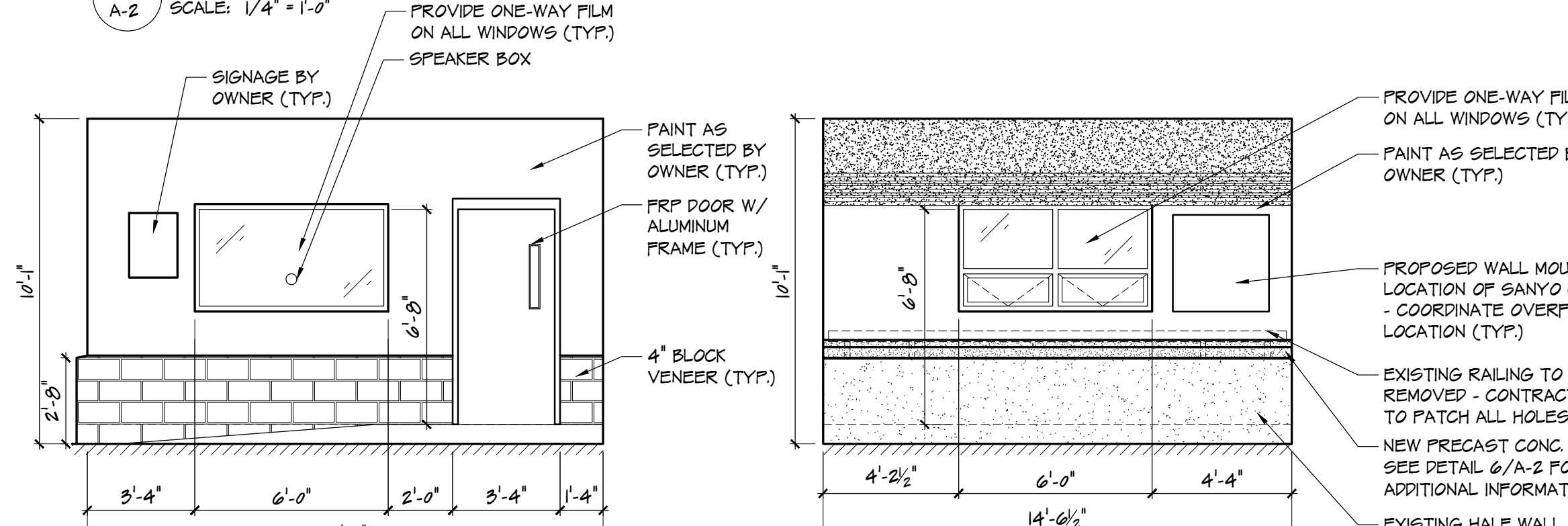


NOTES:
 1. ALL STORE FRONT SYSTEM WINDOWS TO BE AS MANUFACTURED BY KAWNEER TRIFAB 481T OR AN ARCHITECT APPROVED EQUAL
 2. ALL GLAZING TO BE 1" CLEAR INSULATED TEMPERED SAFETY GLASS (1/4" TEMPERED SAFETY + 1/2" AIR SPACE + 1/4" TEMPERED SAFETY) UNLESS OTHERWISE IN THE SCHEDULES & DRAWINGS/SPECS.
 3. FRAME COLOR TO BE AS SELECTED BY OWNER (TYP.)
 4. G.C. TO SUBMIT FULL SETS OF SHOP DRAWINGS FOR REVIEW AND APPROVAL PRIOR TO ANY WORK BEING DONE
 5. PROVIDE SECURITY SCREEN AT ALL HOPPER WINDOWS (TYP.)
 6. WINDOW SPEAKER AS MANUFACTURED BY 'G.R. LAURENCE' MODEL ORLSST9 OR ARCHITECT APPROVED EQUAL (TYP.)

1 TYPICAL WINDOW DETAILS
A-2 SCALE: N.T.S.



5 FRONT ELEVATION
A-2 SCALE: 1/4" = 1'-0"



4 RIGHT SIDE ELEVATION
A-2 SCALE: 1/4" = 1'-0"

3 REAR ELEVATION
A-2 SCALE: 1/4" = 1'-0"

Progress Set	
DATE	BY
04/27/2019 DS	
02/10/2020 CP	
TITLE	BY
Not For Construction	
Signature	Date

PROPOSED NEW SECURITY OFFICE AT:
OCEAN COUNTY PARKING GARAGE
 MADISON AVENUE
 OCEAN COUNTY, NEW JERSEY

Project No. 6/2/2020

Revised By Date

Sheet Title: ELEVATIONS, SECTIONS, DOOR DETAILS AND WINDOW DETAILS

Drawn By: DS 4 OF

Checked By: MPY 6

Sheet No. A-2

Project No. YC0103

PROJECT INFORMATION:
 FILE PATH: C:\Projects\OCTY\00720\Plans\
 FILE NAME: Electrical Sheets.dwg
 LAST SAVED DATE AND TIME: 20 May 2020, 4:27PM
 USER: SAKH BP - Bureau

COPYRIGHT 2020, T&M ASSOCIATES - ALL RIGHTS RESERVED. THE COPYING OR REUSE OF THIS DOCUMENT OR PORTIONS THEREOF, FOR OTHER THAN THE ORIGINAL PROJECT OR THE PURPOSE ORIGINALLY INTENDED, WITHOUT THE WRITTEN PERMISSION OF T&M ASSOCIATES IS PROHIBITED.

GENERAL ABBREVIATIONS

A	AMPERES
AFF	ABOVE FLOOR FINISH
AIC	AMPERES INTERRUPTING CAPACITY
C	CONDUIT
CB	CIRCUIT BREAKER
CKT	CIRCUIT
E	EXISTING
EC	ELECTRICAL CONTRACTOR
EQP	EQUIPMENT
ETR	EXISTING TO REMAIN
FACP	FIRE ALARM CONTROL PANEL
GFCI	GROUND FAULT CIRCUIT INTERRUPTER
GRD/G	GROUNDING
HOA	HAND-OFF-AUTOMATIC
JB	JUNCTION BOX
KV	KILOVOLTS
KVA	KILOVOLT AMPERES
KW	KILOWATTS
NTS	NOT TO SCALE
R	REMOVE
TYP	TYPICAL
UON	UNLESS OTHERWISE NOTED
V	VOLTS
W	WATTS
WP	WEATHERPROOF

NOTE:
 NOT ALL SYMBOLS AND ABBREVIATIONS SHOWN
 HERE MAY APPEAR ON THE DRAWINGS FOR
 THIS PROJECT.

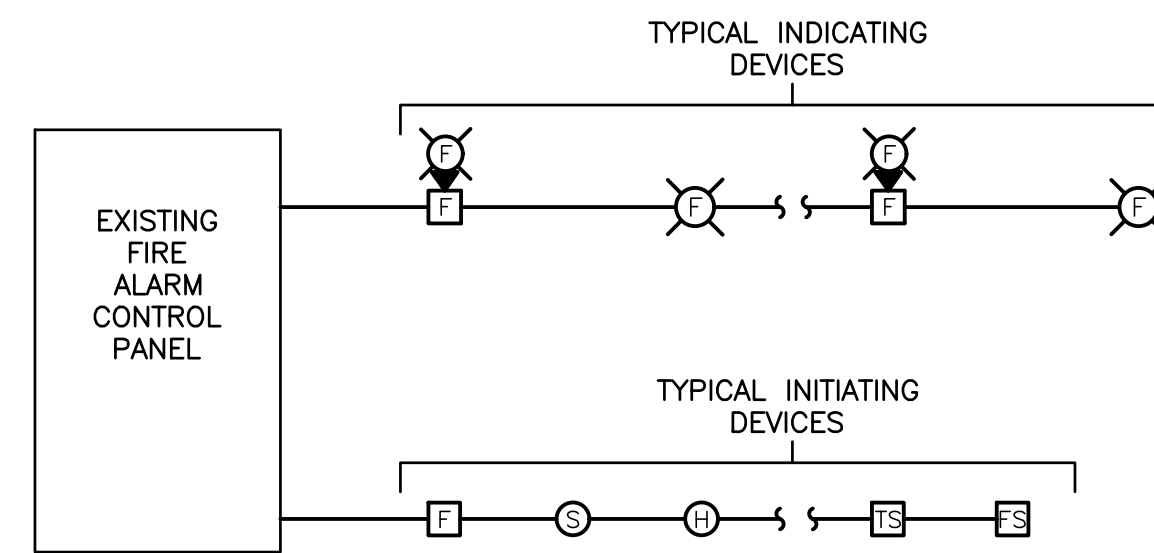
ELECTRICAL SYMBOLS

Ⓢ	ON/OFF DUAL TECHNOLOGY 0-10V DIMMING WALL SWITCH AND OCCUPANCY SENSOR SWITCH, WATTSTOPPER DW-311
Ⓞ	DUAL TECHNOLOGY CEILING MOUNTED OCCUPANCY SENSOR
☐	LIGHT FIXTURES: 2X2 LED PANEL: LITHONIA MODEL 2GTL-2-33L-GZ10-LP835 EMERGENCY LIGHTING UNIT: LITHONIA MODEL ELM2L-UVOLT-LTP-SDRT REMOTE HEADS: LITHONIA MODEL ELMRW-LP220L-DOBTD-SGL EXIT SIGN: LITHONIA MODEL LQM-S-W-3-R-120/277-ELN-SD
Ⓢ	DUPLEX RECEPTACLE, NEMA 5-20R, REFER TO ARCHITECTURAL PLANS FOR MOUNTING HEIGHTS
Ⓢ	QUAD RECEPTACLE, NEMA 5-20R, REFER TO ARCHITECTURAL PLANS FOR MOUNTING HEIGHTS
Ⓢ	TEL/DATA RECEPTACLE, REFER TO ARCHITECTURAL PLANS FOR MOUNTING HEIGHTS AND QUANTITY. PROVIDE 3/4" CONDUIT FROM DATA RECEPTACLE TO 6" ABOVE CEILING FOR DATA CABLING. CONTRACTOR TO PROVIDE FACEPLATE WITH KEYSTONE QUANTITY TO MATCH CABLE QUANTITY. CONTRACTOR SHALL PROVIDE CABLE CONNECTORS, TERMINATE AND TEST CABLE. COORDINATE REQUIREMENTS WITH OWNER.
Ⓢ	FLUSH FLOOR BOX WITH DOUBLE QUAD RECEPTACLE, PROVIDE EMPTY CONDUIT WITH PULL STRING TO WALL INDICATED FOR DATA
⊙	JUNCTION BOX FOR HARDWIRED EQUIPMENT
F	FIRE ALARM MANUAL PULL STATION - MOUNT 48" AFF
F	COMBINATION AUDIO/VISUAL INDICATING DEVICE - MOUNT 80" AFF
F	VISUAL INDICATING DEVICE - MOUNT 80" AFF
FS	FLOW SWITCH
TS	TAMPER SWITCH
S	SMOKE DETECTOR, 'R' DENOTES ELEVATOR RECALL
H	HEAT DETECTOR
DH	DOOR HOLD
SP	SPEAKER
☐	SECURITY CAMERA, REFER TO ARCHITECTURAL PLANS FOR CAMERA SPECIFICATION. PROVIDE CAT6 CABLE IN 3/4" CONDUIT FROM IT RACK TO CAMERA LOCATION INDICATED ON PLANS. CONTRACTOR SHALL PROVIDE CABLE CONNECTORS, TERMINATE AND TEST CABLE. COORDINATE REQUIREMENTS WITH OWNER.
TV	TELEVISION, SAMSUNG 7 SERIES 55" LED UN55RU7100F

ELECTRICAL NOTES

- ELECTRICAL CONSTRUCTION NOTES:**
- THE ELECTRICAL WORK ON THIS PROJECT SHALL BE PERFORMED IN ACCORDANCE WITH REQUIREMENTS OF THE NATIONAL ELECTRICAL CODE.
 - ALL CONDUIT RUNS ARE DIAGRAMMATICALLY SHOWN ON THE DRAWINGS. THE FINAL ROUTING OF CONDUITS SHALL BE DETERMINED BY THE ELECTRICAL CONTRACTOR AND APPROVED BY THE ENGINEER. CONDUIT SHALL BE INSTALLED IN A MANNER TO PREVENT CONFLICTS WITH EQUIPMENT AND STRUCTURAL CONDITIONS. EXPOSED CONDUITS SHALL BE INSTALLED PARALLEL TO BEAMS AND WALLS. CONDUIT SHALL BE TERMINATED SO AS TO PERMIT NEAT CONNECTIONS TO EQUIPMENT.
 - WIRE SIZES SHOWN ON PLANS MAY BE OVERSIZED TO ACCOMMODATE VOLTAGE DROP. CONTRACTOR MAY ELECT TO TAP DOWN WIRE SIZE AT SOURCE AND/OR APPLIANCE IN A LISTED MANNER COMPLIANT WITH THE CODE.
 - CONTRACTOR SHALL PROVIDE APPURTENANCES AS REQUIRED (TRANSFORMERS, RELAYS, ETC.) TO PROVIDE THE PROPER POWER SUPPLY FOR ANY VOLTAGES REQUIRED FOR A COMPLETE INSTALLATION. ANY VOLTAGE SUPPLIES REQUIRED BY THE SUBMITTED EQUIPMENT, FOR POWER OR CONTROLS, SHALL BE INCLUDED.
 - THE ELECTRICAL CONTRACTOR SHALL FURNISH AND INSTALL A COMPLETE GROUNDING SYSTEM IN ACCORDANCE WITH THE NATIONAL ELECTRICAL CODE. ELECTRICAL WIRE RACEWAYS, APPARATUS AND PANEL ENCLOSURES AND OTHER NON-CURRENT CARRYING METAL PARTS SHALL BE MECHANICALLY JOINED TO FORM A CONTINUOUS CONDUCTING METALLIC PATH AND ASSURE ELECTRICAL CONTINUITY OF THE GROUNDING CIRCUITS. THE STRANDED COPPER BONDING JUMPER CABLES AND/OR GROUND WIRES SHALL BE INSTALLED WHERE REQUIRED. THE SURFACE WHERE GROUNDING CONNECTIONS ARE TO BE MADE SHALL BE CLEAN AND DRY. STEEL SURFACES SHALL BE GROUND OR FILED TO REMOVE ALL SCALE, RUST, GREASE AND DIRT. COPPER AND GALVANIZED STEEL SHALL BE CLEANED WITH EMERY CLOTH TO REMOVE OXIDE BEFORE MAKING CONNECTIONS.
 - MOTOR AND POWER DISTRIBUTION EQUIPMENT SHALL BE EFFECTIVELY GROUNDED USING A GROUND CONDUCTOR.
 - CONTROL AND INSTRUMENTATION EQUIPMENT SHALL BE EFFECTIVELY GROUNDED USING A GROUND CONDUCTOR, METALLIC RACEWAY, OR A COMBINATION OF THE TWO.
 - THE TYPE CONDUIT SHALL BE AS FOLLOWS UNLESS OTHERWISE NOTED:

APPLICATION	TYPE
INDOOR LOCATIONS	EMT/MC
OUTDOOR LOCATIONS	RMC
 - THE POWER AND CONTROL WIRING SHALL BE STRANDED COPPER CONDUCTOR WITH THWN INSULATION RATED 600 VOLTS. SERVICE WIRING SHALL BE AS POWER WIRING BUT HAVE "XHHW" TYPE INSULATION. MINIMUM SIZE OF POWER WIRING SHALL BE #12 AWG. CONTROL WIRING SHALL BE #14 AWG.
 - THE ELECTRICAL APPARATUS SUCH AS SWITCHES, RECEPTACLES, CONTROL DEVICES, PANELS, ETC., ARE SHOWN IN THEIR APPROXIMATE LOCATION. ACTUAL LOCATION OF THESE APPARATUS SHALL BE DETERMINED BY CHECKING JOB SITE AND OTHER TRADE DRAWINGS. FINAL LOCATION SHALL BE APPROVED BY THE ENGINEER. SWITCHES AND DISCONNECTS MOUNTING HEIGHT SHALL BE 4'-6" MIN. ABOVE FINISHED FLOOR OR GRADE UNLESS OTHERWISE NOTED.
 - A 1/8" NYLON PULL CORD SHALL BE PULLED INTO ALL CONDUITS NOT CONTAINING WIRES.
 - ALL PVC TYPE CONDUIT EXCEPT ELECTRIC SERVICE CONNECTIONS SHALL INCLUDE A GROUNDING CONDUCTOR IN ADDITION TO THOSE THAT ARE SHOWN ON THE DRAWING.
 - ALL FIELD WIRING TERMINATIONS SHALL BE MADE AT TERMINALS LOCATED IN THE INDIVIDUAL COMPARTMENTS OR ENCLOSURES. USE OF WIRE NUTS OR DIRECT WIRING WILL NOT BE ACCEPTED. ALL TERMINATION POINTS MUST BE IDENTIFIED IN THE SHOP DRAWINGS AND PERMANENTLY / CLEARLY MARKED IN ACCORDANCE WITH THE SPECIFICATION REQUIREMENTS. TERMINATOR MATERIALS SHALL BE SIZED FOR THE INSTALLED CONDUCTORS.
 - ALL WIRES SHALL BE NEATLY BUNDLED AND TAGGED TO INDICATE THE CONNECTED DEVICE. EACH WIRE SHALL BE COLOR CODED AND TAGGED WITH A PLASTIC SLEEVE TYPE WIRING TAG. WIRING SHALL BE TAGGED AT EACH POINT OF TERMINATION.
 - CONDUIT INSTALLATION INTO EQUIPMENT WITH EXPOSED LIVE COMPONENTS SHALL BE ROUTED FOR BOTTOM ENTRY WHERE POSSIBLE OR SEALED IN A WATERTIGHT MANNER ACCEPTABLE TO THE ENGINEER.
 - ALL RELAYS AND CONTACTORS SHALL HAVE A SUFFICIENT AMOUNT OF CONTACTS TO SATISFY THE CONTRACT REQUIREMENTS AND ONE SPARE.
 - ALL DEVICES AND APPARATUS FURNISHED SHALL BE NEW AND SHALL BE UL LISTED.
 - THE WIRING DIAGRAMS, QUANTITY AND SIZE OF WIRES AND CONDUIT REPRESENT A SUGGESTED ARRANGEMENT BASED UPON SELECTED STANDARD COMPONENTS OF ELECTRICAL EQUIPMENT. MODIFICATIONS ACCEPTABLE TO THE ENGINEER MAY BE MADE BY THE CONTRACTOR TO ACCOMMODATE EQUIPMENT ACTUALLY PURCHASED. THE BASIC SEQUENCE AND METHOD OF CONTROL MUST BE MAINTAINED AS INDICATED ON THE DRAWINGS AND/OR SPECIFICATION.
 - DISCONNECT AND REMOVE EXISTING CONDUIT, WIRING, POWER AND CONTROL DEVICES ASSOCIATED WITH EQUIPMENT TO BE DEMOLISHED EXCEPT WHERE OTHERWISE INDICATED TO BE REUSED. REMOVE ALL WIRE AND EXPOSED CONDUIT.
 - ALL CIRCUIT BREAKERS FOR MOTOR-OPERATED EQUIPMENT SHALL BE EQUIPPED WITH LOCK-OUT / TAG-OUT ACCESSORY.



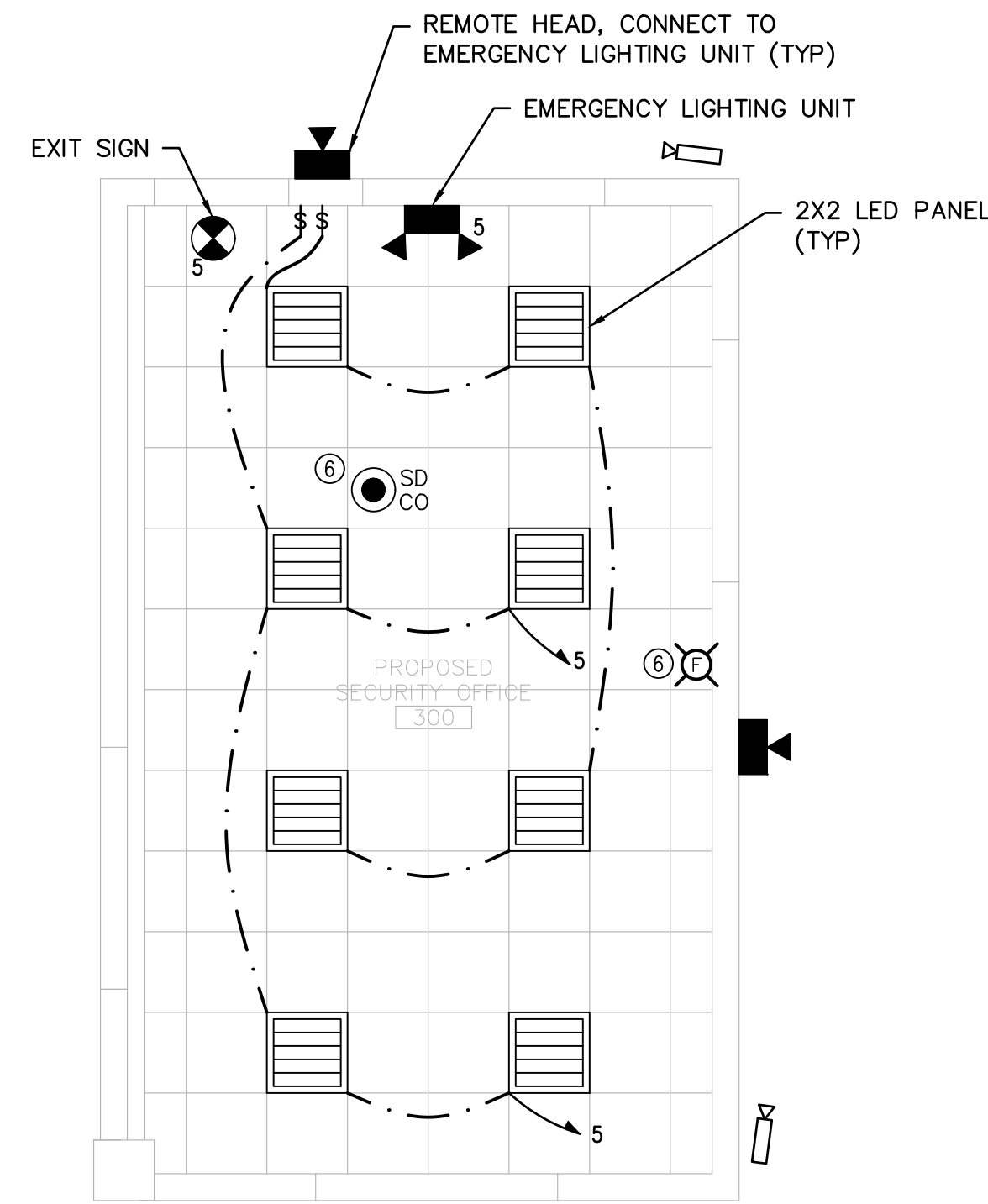
- NOTES:
- NOT ALL FIRE ALARM DEVICES ARE INDICATED ON THIS DIAGRAM. REFER TO FLOOR PLAN FOR LOCATION OF ALL FIRE ALARM DEVICES.
 - CONTRACTOR SHALL PROVIDE SIGNED AND SEALED WIRING DIAGRAMS AND BATTERY CALCULATIONS FURNISHED BY THE FIRE ALARM MANUFACTURER FOR APPROVAL.

FIRE ALARM RISER
 SCALE: NTS

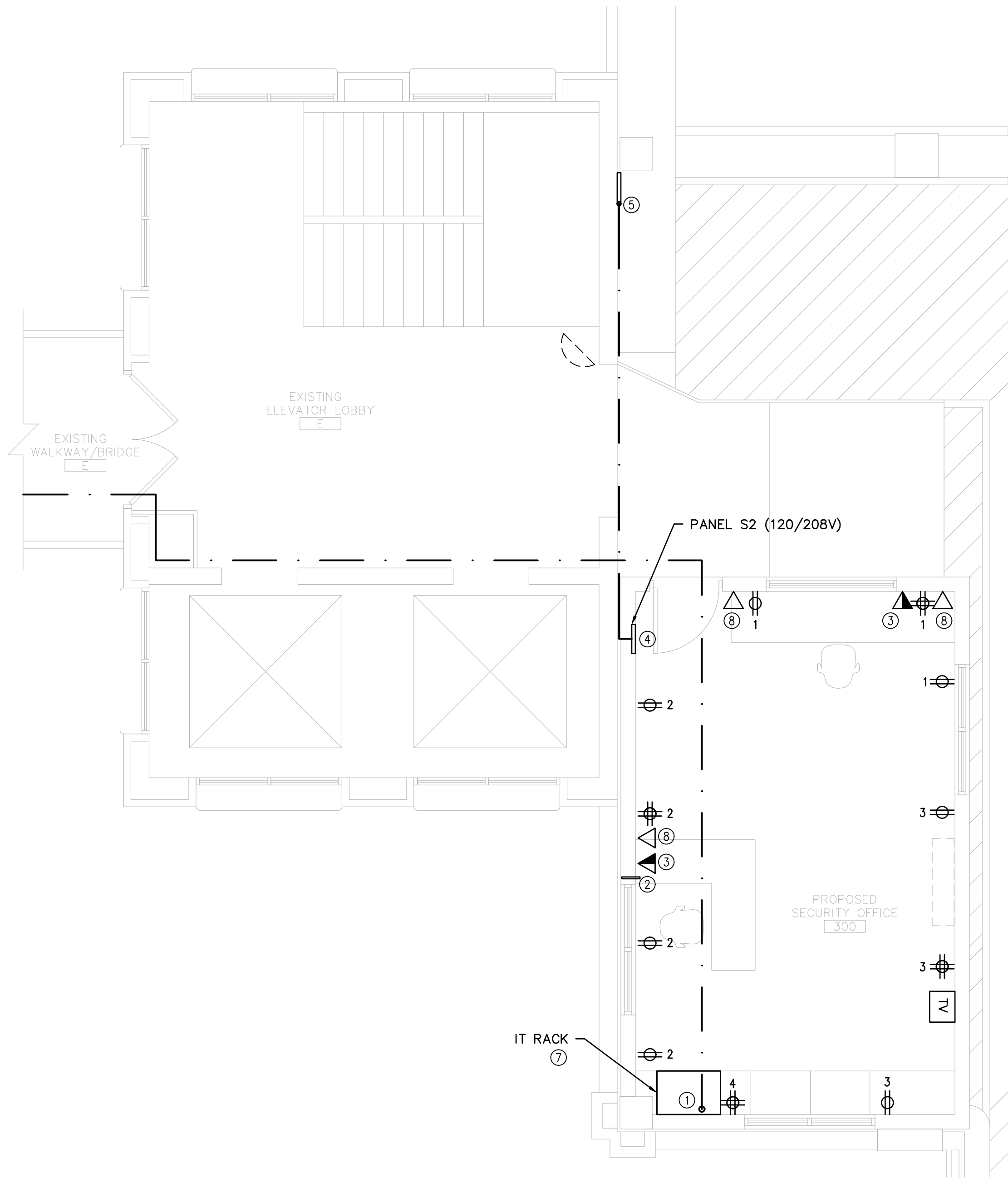
OCEAN COUNTY	DOMINIC A. MOFFITT CONSULTING ENGINEER					REVISIONS	BY
PARKING DECK NEW SECURITY OFFICE							
TOWNSHIP OF OCEAN COUNTY, NEW JERSEY							
ELECTRICAL GENERAL NOTES							
YOUR GOALS. OUR MISSION.							
1144 HOOPER AVENUE, SUITE 202 TOWNSHIP OF OCEAN COUNTY, NEW JERSEY 08753 TEL 732-473-3400 FAX 732-473-3408 www.tandmassociates.com							
NEW JERSEY BOARD OF PROFESSIONAL ENGINEERS AND LAND SURVEYORS CERTIFICATE OF AUTHORIZATION 246A27987500							
OFFICES LOCATED IN: DELAWARE, INDIANA, KENTUCKY, MASSACHUSETTS, MICHIGAN, NEW JERSEY, OHIO AND PENNSYLVANIA							
DESIGNED BY	DWJ	DRAWING					
CHECKED BY	DAM	SHEET	E-1				
DRAWN BY	DWJ	SHEET					
DATE	05/04/20	5					
SCALE	AS SHOWN						
PROJ. NO.	OCTY00720	OF	6				

PROJECT INFORMATION:
 FILE PATH: C:\Projects\OCTY\00720\Plans\
 FILE NAME: Electrical Sheets.dwg
 LAST SAVED DATE AND TIME: 20 May 2020, 4:27PM
 USER: SAKH BIR-BARENB

COPYRIGHT 2020, T&M ASSOCIATES - ALL RIGHTS RESERVED. THE COPYING OR REUSE OF THIS DOCUMENT OR PORTIONS THEREOF, FOR OTHER THAN THE ORIGINAL PROJECT OR THE PURPOSE ORIGINALLY INTENDED, WITHOUT THE WRITTEN PERMISSION OF T&M ASSOCIATES IS PROHIBITED.



ELECTRICAL LIGHTING PLAN
 SCALE: 1/4" = 1'-0"



ELECTRICAL POWER PLAN
 SCALE: 1/4" = 1'-0"

PLAN GENERAL NOTES

- COORDINATE EXACT LOCATION OF ALL RECEPTACLES, SWITCHES & LIGHT FIXTURES WITH OWNER PRIOR TO INSTALLATION - VERIFY ALL DATA, POWER AND PHONE REQUIREMENTS (TYP.)
- ALL LIGHTING IN SECURITY BOOTH SHALL BE CONNECTED TO OCCUPANCY SENSORS AND HAVING DIMMING CAPABILITIES (TYP.)

PLAN KEY NOTES SYMBOL = ①

- NEW 3" CONDUIT WITH SINGLE MODE 12 STRAND OM4 FIBER CABLE AND (3) CAT6 CABLES FROM WALL MOUNTED I.T. RACK UP TO ABOVE CEILING AND RUN THROUGH EXISTING ELEVATOR VESTIBULE THROUGH EXISTING WALKWAY TO BUILDING 129 2ND FLOOR IT CLOSET AND DOWN TO BASEMENT. COORDINATE ROUTING W/ OWNER (TYP.). CONTRACTOR SHALL PROVIDE (1) FIBER PATCH PANEL IN BASEMENT IT ROOM OF BUILDING 129, CONTRACTOR SHALL PROVIDE CABLE TERMINATIONS INTO PATCH PANEL AND TEST. COORDINATE REQUIREMENTS WITH OWNER.
- PROVIDE 1" CONDUIT THROUGH EXTERIOR WALL FOR CONTROL STATION CABLES (TYP.)
- PROVIDE (3) NETWORK CAT6 CABLES TO TEL/DATA RECEPTACLE FLUSH MOUNTED IN WALL FROM IT RACK (TYP.)
- ELECTRICAL SUBPANEL S2 - 24 BREAKER/60 AMP MIN. - FEED WITH 1" METAL CONDUIT FROM ROOM BELOW - SEE FLOOR PLAN FOR DIAGRAM (TYP.)
- EXISTING ELECTRICAL PANEL TWO FLOORS BELOW IN GROUND FLOOR SECURITY ROOM TO FEED NEW SECURITY ROOM PANEL. PROVIDE 60A/3P CIRCUIT BREAKER WITH (4)#6AWG, #10AWG GND IN 1" TO FEED NEW PANEL S2.
- PROVIDE NEW COMBINATION SMOKE AND CARBON MONOXIDE DETECTOR. CONNECT TO NEAREST AVAILABLE FIRE ALARM LOOP AND PROVIDE MODIFICATIONS AS REQUIRED. CONSULT WITH OWNER'S FIRE ALARM VENDOR FOR MORE INFORMATION.
- WALL MOUNTED I.T. RACK BY "TRIP LITE" MODEL #SRW12US33 OR ARCHITECT APPROVED EQUAL. CONTRACTOR SHALL PROVIDE (1) FIBER PATCH PANEL, (1) CAT6 PATCH PANEL AND (1) APC SMARTUPS 1500 UPS. CONTRACTOR SHALL PROVIDE ALL CABLE TERMINATIONS INTO PATCH PANELS AND TEST. COORDINATE REQUIREMENTS WITH OWNER.
- PROVIDE (1) NETWORK CAT6 CABLE TO TEL/DATA RECEPTACLE FLUSH MOUNTED IN WALL FROM IT RACK (TYP.).

LOCATION: NEW SECURITY ROOM 10 KAIC										MFG.: SQUARE D	
										TYPE: NEW	
										MOUNT: FLUSH	
PANEL S2 120/208 VOLTS 3 PHASE 4 WIRE 100 AMP MAINS 60											
CKT. No.	SERVES	WIRE & CONDUIT	TRIP POLE	LOAD KVA	LOAD KVA	TRIP POLE	WIRE & CONDUIT	SERVES	CKT. No.		
1	SECURITY RM RECEPT.	2#12,#12G	20/1	0.54	0.72	20/1	2#12,#12G	SECURITY RM RECEPT.	2		
3	SECURITY RM RECEPT.	2#12,#12G	20/1	0.54	1.8	20/1	2#12,#12G	IT RACK	4		
5	SECURITY RM LIGHTING.	2#12,#12G	20/1	0.30	2.5	20/2	2#12,#12G	DUCTLESS SPLIT SYSTEM (COORDINATE LOCATION WITH ARCHITECT)	6		
7	SPARE		20/1					SPARE	8		
9	SPARE		20/1					SPARE	10		
11	SPARE		20/1					SPARE	12		
13	SPARE		20/1					SPARE	14		
15	SPARE		20/1					SPARE	16		
17	SPARE		20/1					SPARE	18		
19	SPARE		20/1					SPARE	20		
21	SPARE		20/1					SPARE	22		
23	SPACE		20/1					SPACE	24		
				1.38	5.02			6.4 KVA = 18A			

* PROVIDE NEMA3R DISCONNECT SWITCH AT OUTDOOR UNIT. PROVIDE 3#12, #12G FROM OUTDOOR UNIT TO INDOOR UNIT FOR POWER. COORDINATE CONTROL REQUIREMENTS WITH MANUFACTURER.

NO.	DATE	REVISIONS	BY	CHKD

DOMINICA A. MOFFITT
 CONSULTING ENGINEER
 LICENSED PROFESSIONAL ENGINEER
 STATE OF NJ LICENSE No. 2460519200

OCEAN COUNTY
PARKING DECK NEW SECURITY OFFICE
 TOMS RIVER, OCEAN COUNTY, NEW JERSEY
ELECTRICAL CONSTRUCTION PLANS

1144 HOOPER AVENUE, SUITE 202
 TOMS RIVER, NJ 08753
 TEL 732-473-3400
 FAX 732-473-3408
 www.tandmassociates.com
 NEW JERSEY BOARD OF PROFESSIONAL ENGINEERS
 AND LAND SURVEYORS
 CERTIFICATE OF AUTHORIZATION 246A27987500
 OFFICES LOCATED IN:
 DELAWARE, INDIANA, KENTUCKY, MASSACHUSETTS,
 MICHIGAN, NEW JERSEY, OHIO AND PENNSYLVANIA

DESIGNED BY	DWJ	DRAWING	
CHECKED BY	DAM	E-2	
DRAWN BY	DWJ	SHEET	
DATE	05/04/20	6	
SCALE	AS SHOWN		
PROJ. NO.	OCTY00720	OF	6