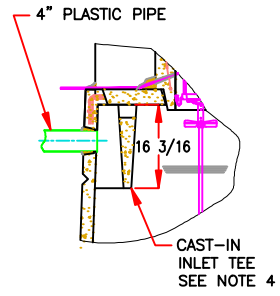
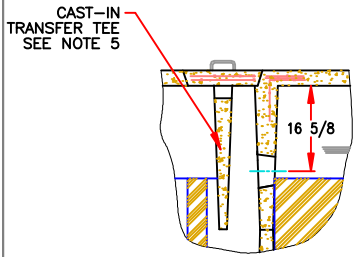


DETAIL 1



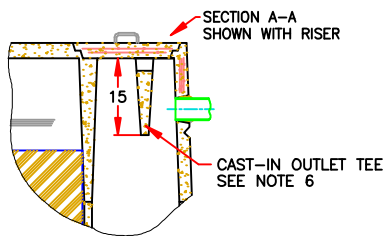
OPTIONAL INLET TEE

DETAIL 2

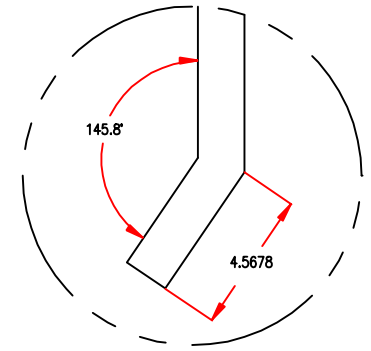
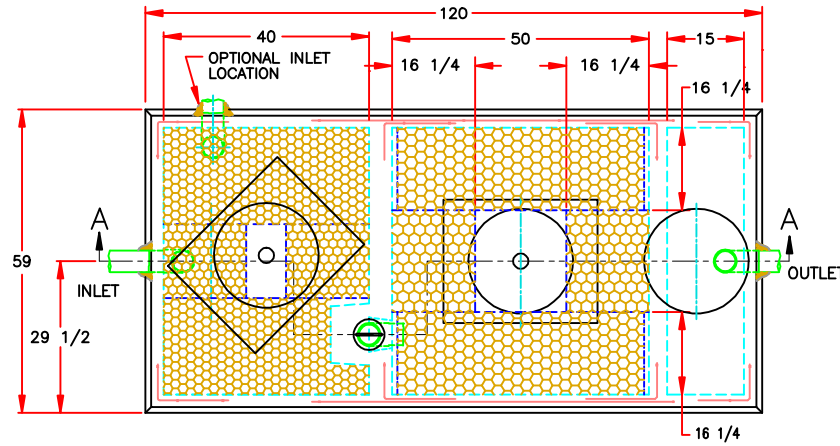


OPTIONAL TRANSFER TEE

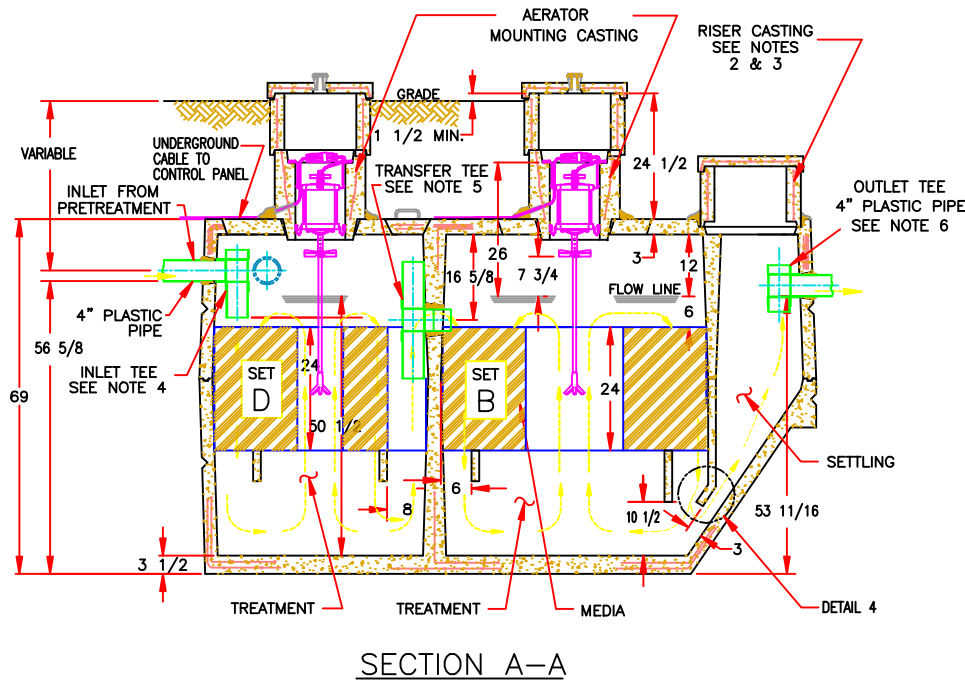
DETAIL 3



OPTIONAL OUTLET TEE



DETAIL 4



SECTION A-A

NOTES:

- 1.) AERATOR MODEL 700LL IN CONTINUOUS OPERATION MUST BE USED.
- 2.) IF AERATOR MOUNTING CASTING HAS NO RISER, RISERS ARE NOT REQUIRED HERE. REMOVABLE CONCRETE COVERS, OR PLASTIC COVERS SECURED WITH TAMPER RESISTANT FASTENERS ARE REQUIRED.
- 3.) IF AERATOR MOUNTING CASTING HAS A RISER(S), COVERED RISERS ARE REQUIRED HERE. RISERS SHOULD BE DEVELOPED TO GRADE OR TO 6"-12" BELOW GRADE.
- 4.) PLANTS WHICH DO NOT USE A PLASTIC INLET TEE IN THE PRETREATMENT COMPARTMENT MAY USE AN OPTIONAL CAST-IN INLET TEE. SEE DETAIL 1.
- 5.) PLANTS WHICH DO NOT HAVE A PLASTIC TRANSFER TEE IN THE TREATMENT COMPARTMENT MAY USE AN OPTIONAL CAST-IN TRANSFER TEE. SEE DETAIL 2.
- 6.) PLANTS WHICH DO NOT HAVE A PLASTIC OUTLET TEE IN THE SETTLING COMPARTMENT MAY USE AN OPTIONAL CAST-IN OUTLET TEE. SEE DETAIL 3.
- 7.) 1000 GALLON MINIMUM PRETREATMENT TANK MUST PRECEDE THE J1500.

	REVISED: 01-20-09
	DRAWN BY: R. P. T.
	APPROVED BY: D.S.M.
	DATE: 1-18-95
J1500 JET TWO-PIECE CONCRETE TANK	SCALE: NONE
© MMI JET INC.	D 12
<small>PROPRIETARY PROPERTY; THIS DRAWING IS THE PROPERTY OF JET INC. AND MAY NOT BE REPRODUCED, COPIED OR USED WITHOUT WRITTEN PERMISSION.</small>	
DRAWING NUMBER: J-1500	

PATENTED