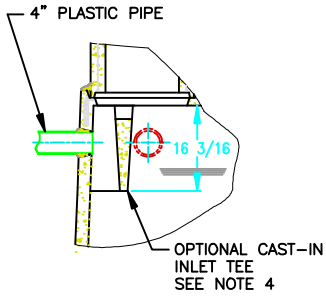
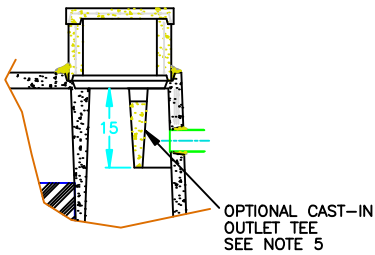


DETAIL 1



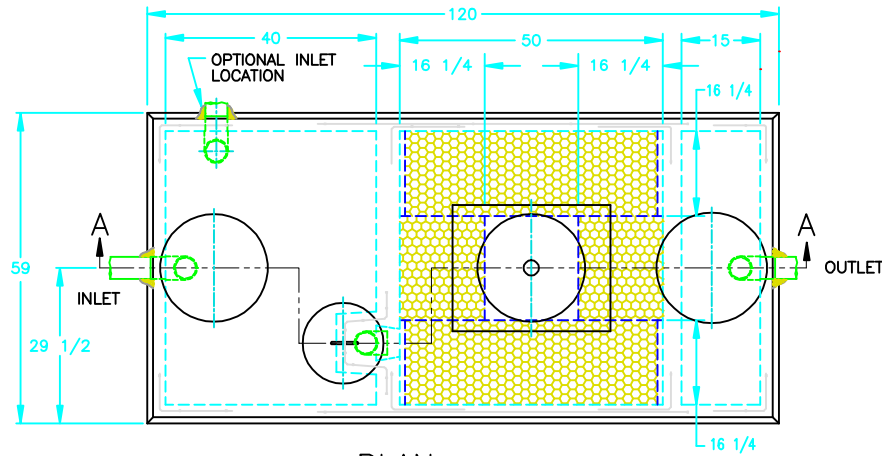
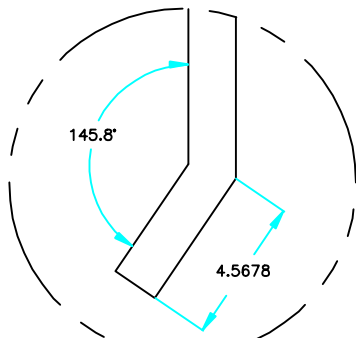
OPTIONAL CAST-IN INLET TEE

DETAIL 2

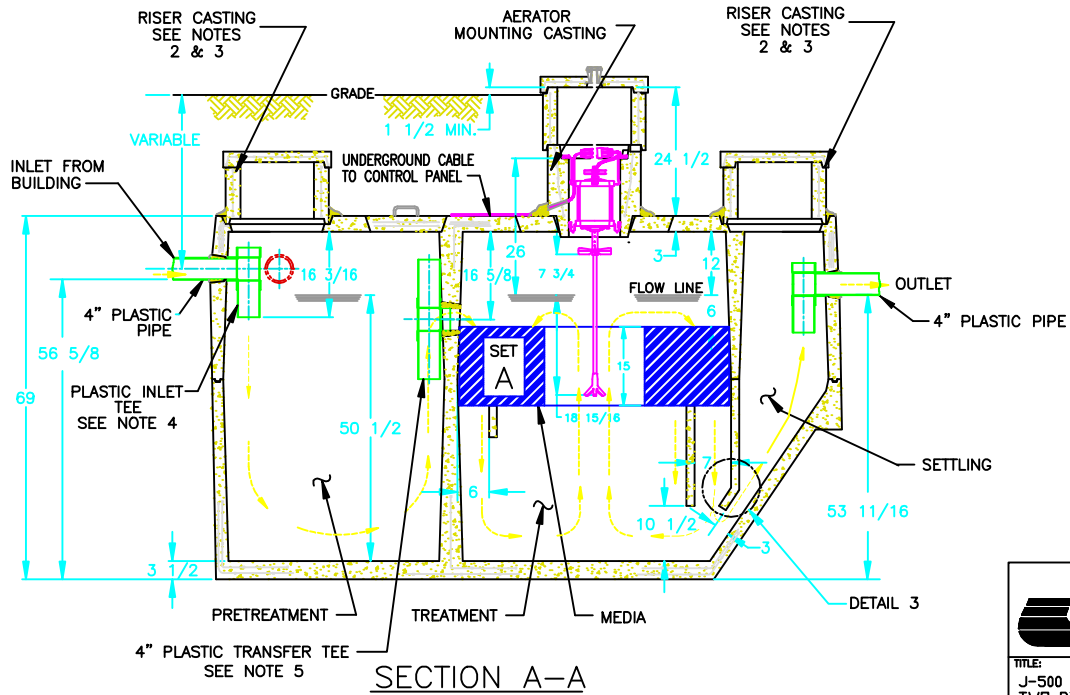


OPTIONAL CAST-IN TRANSFER TEE

DETAIL 3



PLAN



SECTION A-A

NOTES:

- 1.) AERATOR MODEL 700LL MUST BE USED IN CONTINUOUS OPERATION.
- 2.) IF AERATOR MOUNTING CASTING HAS NO RISER, RISERS ARE NOT REQUIRED HERE. REMOVABLE CONCRETE COVERS OR PLASTIC COVERS SECURED WITH TAMPER RESISTANT FASTENERS ARE REQUIRED.
- 3.) IF AERATOR MOUNTING CASTING HAS A RISER(S), COVERED RISERS ARE REQUIRED HERE. RISERS SHOULD BE DEVELOPED TO GRADE OR TO 6"-12" BELOW GRADE.
- 4.) PLANTS WHICH DO NOT USE A PLASTIC INLET TEE IN THE PRETREATMENT COMPARTMENT MAY USE AN OPTIONAL CAST-IN INLET TEE. SEE DETAIL 1.
- 5.) PLANTS WHICH DO NOT HAVE A PLASTIC TRANSFER TEE IN THE PRETREATMENT COMPARTMENT MAY USE AN OPTIONAL CAST-IN TRANSFER TEE. SEE DETAIL 2.

| | | | | | | | | | |
|--------|--|--|--|--|--|--|--|--|--|
| REV. | | | | | | | | | |
| EN NO. | | | | | | | | | |
| DATE | | | | | | | | | |

PATENTED **JET INC.**
CLEVELAND, OHIO

| | |
|---|---------------|
| DRAWN BY: TFV | DATE: 5-21-01 |
| APPROVED BY: GW | DATE: 5-21-01 |
| MATERIAL: | |
| TITLE: J-500 TWO-PIECE CONCRETE TANK | |
| SCALE: NTS | |
| UNLESS OTHERWISE SPECIFIED ALL DIMENSIONS IN INCHES | |
| DECIMAL: ± .005 | |
| FRACTION: ± 1/64 | |
| DEGREE: ± 1° | |
| USED ON: | C |
| DRAWING NUMBER: 090521-01 | |