

Board Games and Gaming

Details of shops, cafes and events in and around Surrey



Version 1a - published August 2025

This handout has been produced as part of Autism Friendly Communities Surrey.

The project is funded by Surrey County Council.

The team from Autism by Experience CIC is leading the project.



Autism in Surrey

Working to improve the lives of autistic people in Surrey

We will be keeping this handout up-to-date, so please do let us know if anything needs editing.

You can contact us:

Email

AFC@autismbyexperience.co.uk

Visit our website

www.autismbyexperience.co.uk



Autism by Experience
Community Interest Company

Do or Dice Tabletop Games Café - Addlestone



Tabletop Gaming in the heart of Addlestone.

Do or Dice is a tabletop games cafe. They offer hot and cold drinks, milkshakes and a comfort food menu including burgers, chicken strips, nachos and snacks.

On their website you'll see a weekly timetable of activities and events ranging from Pokémon, Magic: The Gathering, Yu-Gi-Oh!, One Piece, Star Wars Unlimited, Lorcana, Chess, Dungeons and Dragons, Warhammer, other miniature wargames and board games.

Address: Unit 6B Addlestone One, Market Street, Addlestone, KT15 2GB

Opening hours: Open every day 9.30am to 10pm (10am to 5pm Sundays)

Website: <https://www.do-or-dice.com/>

Wayfarer's Rest - Godalming



Boardgame cafe and shop on Godalming High Street.

Wayfarer's Rest is a board games cafe. They have a collection of hundreds of board games for you to pick from. To use the board games there's a £3 charge per person, per hour.

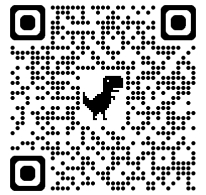
They have a range of cakes, crisps and muffins. A lot of their options are vegan and/or gluten free. For drinks, you can find a selection of soft drinks along with their speciality coffee and teas. They advertise events on their website including a Thursday evening Board Games Club.

Address: Wayfarer's Rest, 46 High Street, Godalming, Surrey GU7 1DY

Opening hours: Closed Mondays. Tues to Thurs 10am to 10pm, Fri to Sat 10am to 11pm, Sunday 11am to 5pm.

Website: <https://wayfarersleague.com/wayfarers-rest/>

Unplug + Play - Guildford



A board games cafe in Guildford town centre

Unplug + Play have over 700 games to enjoy, from all-day strategic brain burners, to 5 minute silly gigglers, and everything in between.

How it works: £8 per person gets you a table for 3 hours. They can recommend you games, or you can choose your own from their categorised library. They can help set it up and teach you the rules. You can get drinks and snacks in the cafe, or bring in your own.

Address: Unplug + Play, 17 Jeffries Passage, Guildford, GU1 4AP

Opening hours: Closed Mondays. Tues to Fri 12noon - 11pm, Sat 10am - 11pm, Sun 10am - 10pm.

Website: <https://www.unplugandplay.cafe/>

Game N Play - Dorking



Board games cafe on Dorking High Street.

You can come and play board games in the shop or buy a ukulele. They offer an inclusive, welcoming, fun, safe environment for all. They will be holding some special games nights/tournaments including Chess, Scrabble and Warhammer!!

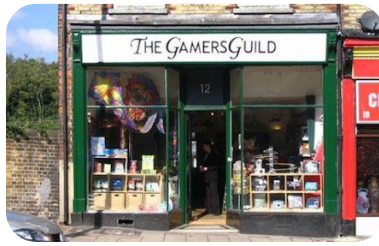
You can book a table to play or just pop in. Events include chess nights and scrabble nights. You can buy hot and cold drinks, sandwiches and snacks.

Address: Game-n-Play, 280 High Street, Dorking, Surrey, RH4 1QT

Opening hours: Closed Mondays. Tues to Thurs 10am to 9pm, Fri to Sat 10am to 10pm, Sun 10am to 4pm

Website: <https://game-n-play.co.uk/>

The Gamers Guild - Redhill



A board games shop between Redhill and Reigate

The Gamers Guild is a games shop with gaming rooms available for hire.

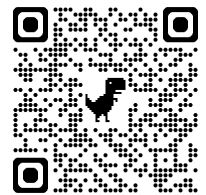
Regular clubs, groups and events include; Pokemon, Dungeons and Dragons, Kill Team, Role Playing games, Warhammer, board games.

Address: The Gamers Guild, 12 Linkfield Corner, Redhill, RH1 1BB

Opening hours: Mon 11am to 4pm, Tues 11am to 4pm and 6pm to 9pm, Wed 11am - 7:30pm
Fri 11am to 7:30pm, Sat 11am to 5pm. Thurs and Sun closed.

Website: <https://shop.thegamersguild.co.uk/>

Aldershot Games Shop - Aldershot



Aldershot's only dedicated, specialist games shop.

Whether you are looking for a small pocket game to keep the kids entertained on a long journey, an epic strategy game to occupy an entire weekend with your closest friends, or simply a classic board game, they have them all.

They host regular events every week - you can find their schedule on their Events page, or on their Facebook page.

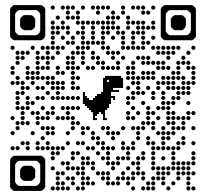
They have four gaming rooms for events and gaming, including the 'War Room' for extensive war gaming, and over 2,200 square feet of gaming space.

Address: The Games Shop Aldershot, 6 Wellington Street, Aldershot, Hampshire, GU11 1DZ

Opening hours: Mon 10am to 6pm, Tues to Sat 10am to 11pm, Sun 10am to 6pm

Website: <https://thegamesshopaldershot.co.uk/>

Food and Board - Yateley



A board games cafe in Yateley.

Enjoy delicious ethically sourced coffee and freshly prepared snacks & meals while playing any of the hundreds of board games they have in stock.

From Chess to Catan and Guess Who to Gloomhaven, there's something for every age and rivalry!

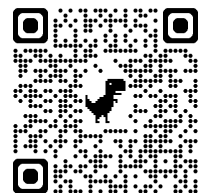
They recommend you book in advance to make sure they have a table ready for you. They also host Pokemon and Dungeons and Dragons events.

Address: Food and Board, 5 Elizabeth Parade, Tudor Drive, Yateley, GU46 6BY.

Opening hours: Monday closed, Tue 6.30pm to 10pm, Wed to Sat 11am to 10pm, Sun 2pm to 6pm.

Website: <https://foodandboard.co.uk/>

Lionsheart Bookshop - Woking



Your local independent bookshop, café, and game store in Woking

Lionsheart run regular games events including Dungeons and Dragons, Star Wars and other Trading Card Games, board games and MTG Commander.

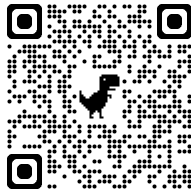
The cafe has a range of hot and cold drinks and cakes.

Address: Lionsheart Bookshop, 67 Commercial Way, Woking, Surrey, GU21 6HN

Opening hours: Mon to Fri 8am to 10pm, Sat 9am to 6pm, Sun 9am to 10pm

Website: <https://www.lionsheartbookshop.co.uk/>

Miwk Collectibles - Reigate

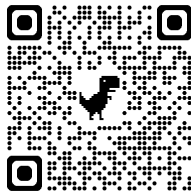


A collectibles shop in Reigate that also hosts Pokemon and Yu - Gi - Oh events.

Address: Miwk Collectibles, 45a Bell Street, Reigate, Surrey, RH2 7AQ

Website: <https://www.miwk.co.uk/>

That Retro Place - Caterham



A board games cafe serving artisan coffee and snacks, with a small 80s style video games arcade, that sells/repairs classic consoles/games.

Events include Subbuteo evenings and craft events.

Address: 21 High Street, Caterham, Surrey, CR3 5UE

Opening Times: 10.30am to 5.30pm Tues to Sat

Website: <https://www.facebook.com/profile.php?id=61552848046307#>

The Ludoquist - Croydon



Croydon's award-winning little haven for board games, good food, and great company.

The cafe services beer, cocktails, soft drinks, pizzas and paninis

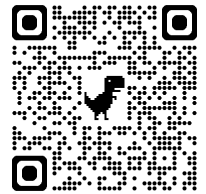
They have over 1000 games available to play, £8 for adults, £4 for under 16's.

Address: 21 High Street, Caterham, Surrey, CR3 5UE

Opening Times: Mon to Thurs 12pm to 10pm, Fri 12pm to 11pm, Sat 11am to 11pm, Sun 11am to 8pm.

Website: <https://www.theludoquist.com/>

Gamers Lounge - Guildford and beyond !



Preserving games for future generations - come along to an event to play.

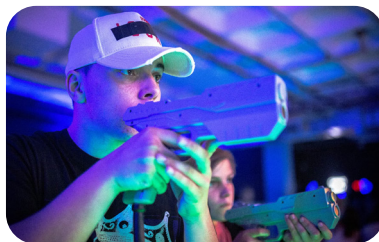
Gamers Lounge is set up to preserve how retro games used to be played, on the original consoles it was developed for. Using modern flashcards, we have managed to archive as many games as we could so that everyone coming to our events, young or old, can understand and enjoy gaming as it was 20-30 years ago.

A monthly event is held at The Boileroom in Guildford and Gamers Lounge pops up in other venues such as Guilfest and Cranleigh Arts Centre. A new monthly event is being planned for Woking Library.

Events: Once a month on a Saturday afternoon (12pm to 2pm and 2pm to 4pm) at The Boileroom in Guildford, Check the website for other events.

Website: <https://thegamerslounge.net/>

High Score Arcade - Farnborough



You can book and pay for a one hour session and then free-play on the machines.

High Score Arcade Farnborough has over 60 games from old school classics including Space Invaders and PAC-man to pinball, sports games and the newest arcade fun. There's something for everyone to enjoy.

Their Quiet Hour runs once a month with a reduced capacity. Their machine volumes are turned down whilst still allowing everyone to have a great gaming experience. Carers are welcome to attend and join in with the fun. You only need to buy a ticket for those playing.

Address: The Meads Shopping Centre, Unit 29, Farnborough, Hampshire, GU14 7SL.

Opening hours: Fri 4pm to 8pm, Sat 10am to 8pm and Sundays 10am to 6:30pm. Open 7 days a week during school holidays and bank holidays

Website: <https://www.highscorearcades.co.uk/farnborough>

The Heart of Gaming - Croydon



Dedicated to keeping the arcade scene alive.

The Heart of Gaming is a video game arcade and gaming lounge for all the family. Experience a thrilling journey through arcade gaming history with beloved classics and up-to-date games. When it comes to consoles, from the SNES, Dreamcast, and N64 classics to PS5 and Nintendo Switch, they've got it all.

The Heart of Gaming is on Croydon High Street with local shops and restaurants surrounding it. Adults: £20 all-day pass, Children under 16: £15 all-day pass, Adult and Child £25 (see website for more offers).

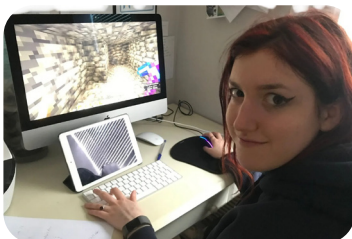
Address: The Heart of Gaming, 44-46 North End Road, Croydon, CR0 1UG

Opening hours: Fri to Sun 12pm to 7pm

Website: <https://www.heartofgaming.co.uk/>

Supported online gaming

APPEER - online sessions



Each month the APPEER team will be running either a Roblox or Minecraft build and share session.

There will be a separate Session for Girls (aged 7 to 12) and Teens (aged 13 to 18).



The aim for the sessions is to enable the girls to:

- Share positive social interactions in a pressure-free, supportive setting or to work alone if desired
- Take part in a collaborative session, to share tips and build together or simply play alongside each other
- Join a cohort which often remains similar in each session

Sessions cost £9 for each person for a one hour session. APPEER also offer a wide range of other activities for autistic girls and women.

Website: <https://www.appeer.org.uk/Online-Sessions>