

***KANSAS HORSE COUNCIL NEWSLETTER.
NEWS FOR KANSAS AND THE EQUINE INDUSTRY.***

July 2024 EDITION

**News, announcements and events from around Kansas,
regarding the Kansas equine industry.**

**Legislation, Insurance, Equipment & Retail discounts are just
some of our membership benefits! Visit our website to learn
more.**

Join our herd!



[Visit Our
Website!](#)



**JOIN
NOW**



2024

WWW.KANSASHORSECOUNCIL.COM

2024 Upcoming Events and Calendar

This month there are shows, rodeos, trail rides, and more!

See them here:

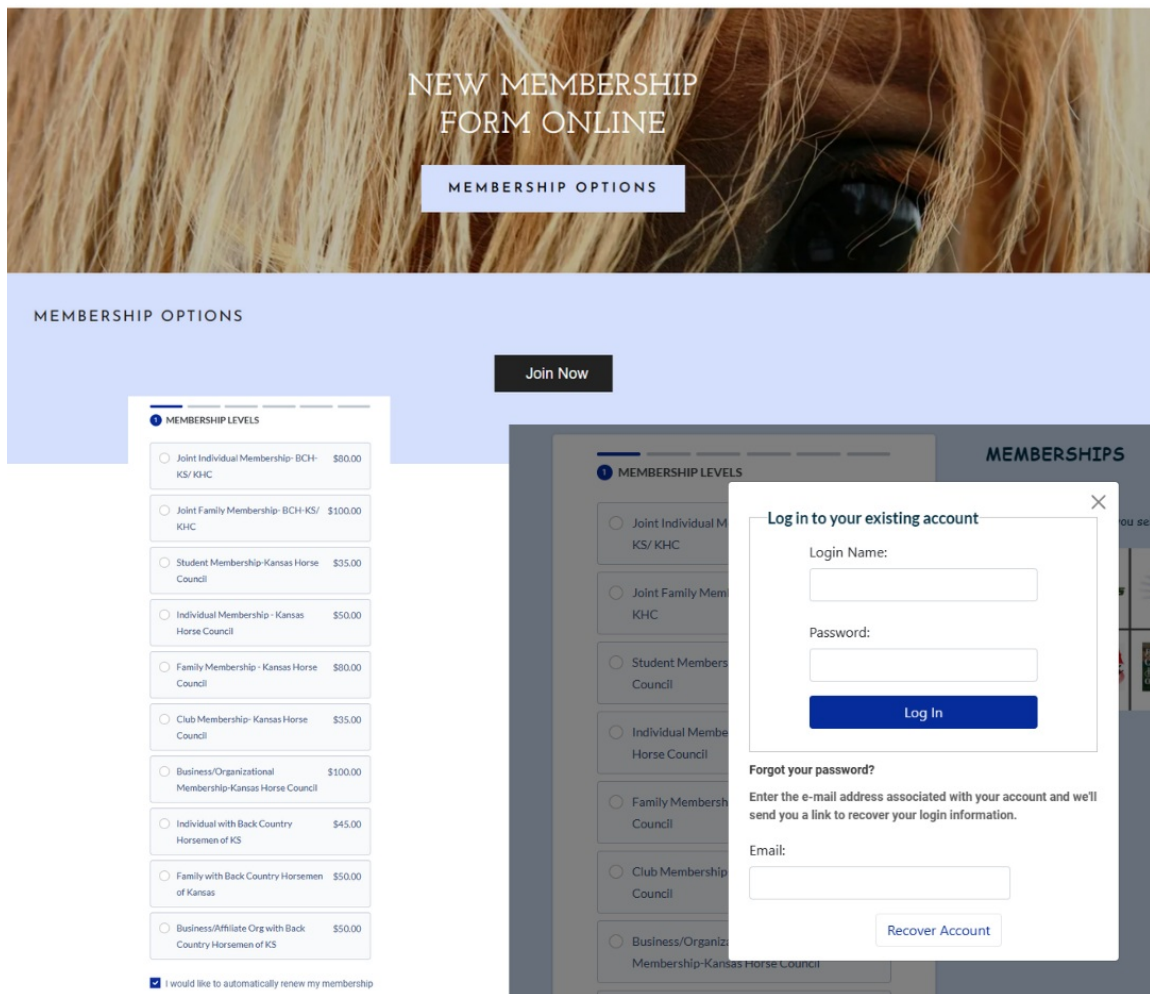
Calendar of Submitted Events

Any questions regarding events, please call us at

785-776-0662

If interested in more information or to register for an event, please email us
at

director@kansashorsecouncil.com



NEW MEMBERSHIP FORM ONLINE

MEMBERSHIP OPTIONS

Join Now

MEMBERSHIP LEVELS

<input type="radio"/> Joint Individual Membership- BCH- KS/ KHHC	\$80.00
<input type="radio"/> Joint Family Membership- BCH- KS/ KHHC	\$100.00
<input type="radio"/> Student Membership- Kansas Horse Council	\$35.00
<input type="radio"/> Individual Membership- Kansas Horse Council	\$50.00
<input type="radio"/> Family Membership- Kansas Horse Council	\$80.00
<input type="radio"/> Club Membership- Kansas Horse Council	\$35.00
<input type="radio"/> Business/Organizational Membership- Kansas Horse Council	\$100.00
<input type="radio"/> Individual with Back Country Horsemen of KS	\$45.00
<input type="radio"/> Family with Back Country Horsemen of Kansas	\$50.00
<input type="radio"/> Business/Affiliate Org with Back Country Horsemen of KS	\$50.00

☒ I would like to automatically renew my membership

Log in to your existing account

Login Name:

Password:

Log In

Forgot your password?

Enter the e-mail address associated with your account and we'll send you a link to recover your login information.

Email:

Recover Account

NEW for 2024 and beyond!

When you set up an account and you are logged in, any purchases you make are listed in your personal account, so you can always see your transactions and you'll always have your member number handy.

HRP, Lifetime Insurance, Signs and Guides are in the "store" options, just under the Membership options page.

We hope you like the changes. We'll still be able to take memberships over the phone or check by mail...this online provides convenience and an auto-renewal option if you'd like!

Feel free to email or call if you have any questions.
director@kansashorsecouncil.com, 785-776-0662

*You're
Invited!*

July 25, 2024

**2:30pm to 4:00pm
in person & Zoom**



AGENDA will be posted on the Kansas Horse Council FB page soon.

Meeting Location:
Kansas Department of Agriculture,
1320 Research Dr., Manhattan, KS 66502.

- Topics:**
- a recap of the previous priorities
 - equine economic impact data
 - current events

**Special Guest: Julie Broadway with American Horse Council via
Zoom**

**We hope to see you there and hear what you think should be the
next priorities to work on!**

REGISTER HERE TO ATTEND BY ZOOM OR IN PERSON

AGENDA



**SAVE
THE
DATE**

Kansas
2024 AG SUMMIT
GROW SMARTER. GROW STRONGER. GROW KANSAS.



2024 Kansas Governor's Summit on Agricultural Growth
WEDNESDAY, AUGUST 21, 2024

Kansas State University Alumni Center | Manhattan, Kansas

Come early
and join us for
the social event!
AUGUST 20

This event is FREE, although we request that you register online. Registration will open at a later date.

A social event will be held the evening of Tuesday, August 20, also at the Alumni Center. Details will be posted on our website as they become available.

agriculture.ks.gov/GrowAg


REGISTER HERE

SAVE the DATES

KANSAS
LIVESTOCK
ASSOCIATION

K-STATE
Research and Extension

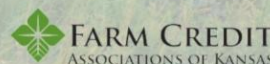
 **August 15**
Wabaunsee Co. | Downey Ranch

 **August 22**
Gove Co. | Hoeme Ranch & Cattle

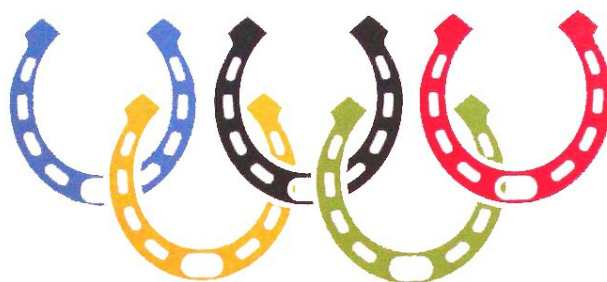
2024 Ranch Management Field Days



Thanks to our sponsors!



SAVE THE DATES!
2024 KLA/KSU Ranch Management Field Days
More info to follow!



LET THE GAMES BEGIN

The equestrian events at the 2024 Paris Olympics will take place from July 27 to August 6.

Here's a summary of the key dates:

July 29: Eventing Individual Final (jumping)
and Eventing Team Final (jumping)

August 2: Jumping Team Final

August 3: Dressage Team Final (Grand Prix Special)

The equestrian program features three disciplines:
eventing, jumping, and dressage, with a total of six gold medals up for grabs.

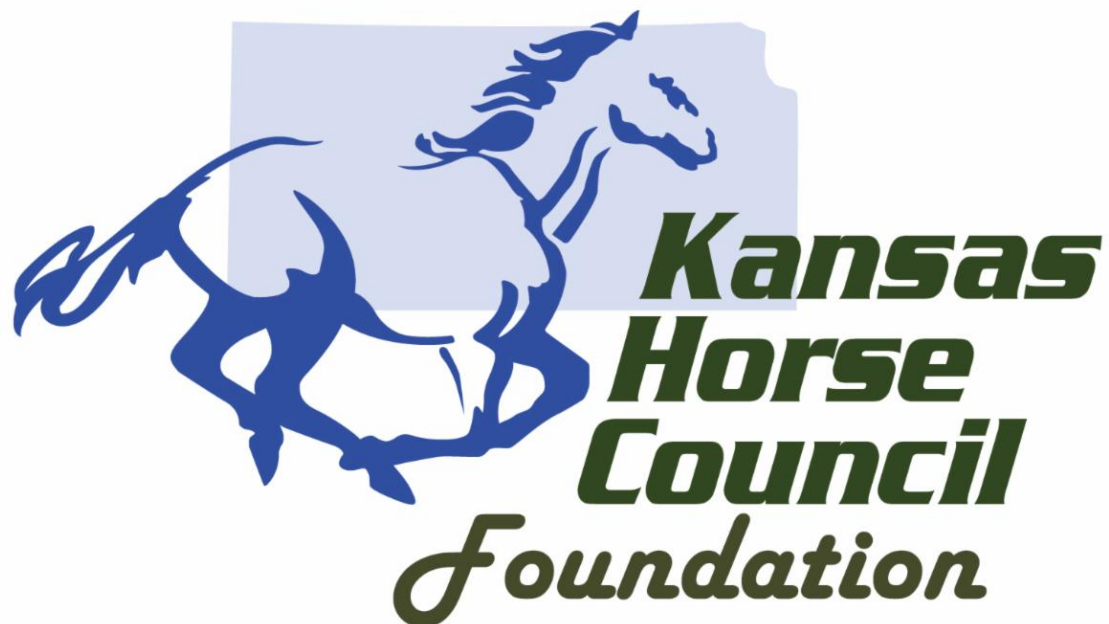
Enjoy a few clips of some past freestyle dressage greats!

Stefan Peters 2020

Andreas Helgstrand 2006



Planning for the future?
Consider a tax deductible donation to
the Kansas Horse Council Foundation, a 501c3 charitable
organization, promoting equine education and providing academic
scholarships to equestrians.



KOOL KURTAINS

Create a Haven for your Horses



**For Barns
& Run-in Sheds**

**Deflects 80% of
the sun's heat rays**

**Screens out
insects and birds**



AHC Reel of Industry Updates



**ARE YOU INTERESTED IN SPONSORING AWARDS FOR THE
KANSAS STATE FAIR 4-H HORSE SHOW?**

Check out the list of classes and divisions you can help with. Contact Kelsey Nordyke if interested in supporting.

klnordyke@ksu.edu

(620) 222-1311

Your name will be listed in the Show Program!

LIST OF CLASSES TO SUPPORT





Bret Maceyak of PATH International chats with the AHC team about miniature horses as service animals under the American Disabilities Act.

It was a fascinating conversation about these little dynamos and all the ways they can be the perfect partners.

The AHC team also touches base on three timely topics:

- the release of new horse stamps from USPS (they are going fast!)
- two national days of commemoration for and about horses - July 15 and July 17 "National I Love Horses Day" and "National Meet a Horse Day"
- tips for horses and riders in the heat!

[Ears Up- Listen Here!](#)

NATIONAL MEET-A-HORSE DAY

JULY 17TH, 2024

5 PM - 7 PM

ATCHISON COUNTY FAIRGROUNDS



FREE

FOR HORSE
LOVERS !

CONTACT

CCLIERZ@KSU.EDU

OR CALL (913) 330 0050

FOR MORE INFORMATION

K-STATE
Research and Extension



Atchison
County

**DO YOU HAVE A HORSE LOVER IN THE FAMILY?
HAVE YOU EVER WONDERED WHAT GOES INTO THE
CARE OF A HORSE? COME OUT TO THIS COME & GO
EVENT AND LEARN ALL ABOUT THE HORSE!**

K-State Research and Extension is committed to providing equal opportunity for participation in all programs, services and activities. Program information may be available in languages other than English. Reasonable accommodations for persons with disabilities, including alternative means of communication (e.g., Braille, large print, audio tape, and American Sign Language) may be requested by contacting the event contact (Clarissa Conrad-Lierz) at (913) 330-0050 or cclierz@ksu.edu. Requests received after 7/7/24 will be honored when it is feasible to do so. Language access services, such as interpretation or translation of vital information, will be provided free of charge to limited English proficient individuals upon request.



Summer is in full swing and it's only going to get hotter!

Unfortunately, some of our equine friends struggle to sweat properly in the summer heat, which can put them at an increased risk of heat stress.

Though there is limited evidence in regard to effective treatments for horses diagnosed with anhidrosis (the inability to sweat properly), there are a few therapies that have been proposed to help, including offering horses dark beer!

Overall, watch closely for signs of heat stress if your horse is diagnosed with anhidrosis. During the summer months, monitor your horse's response to the heat and ensure they are sweating an appropriate amount. If you have concerns about your horse's ability to sweat, please contact your veterinarian.

MTYHBUSTERS

? Can horses drink beer?



Horses rely on sweating to help dissipate body heat. When this ability is compromised, they are at increased risks for heat stress. There is limited evidence related to effective treatments, but some proposed therapies include electrolyte supplementation, herbal therapies, acupuncture and even offering them dark beers!



Ottawa County Fair



Minneapolis, Kansas



Draft Horse and Mule field day and competition

Field Days Events

- ♦ Straw Cutting
- ♦ Straw Raking
- ♦ Stationary and Horse Powered Baler Demonstration



All working teams welcome

Register by phone and mail. Final registration date July 8, 2024

Competition Events

- ♦ Feed Team Race
- ♦ Other events
- ♦ Single/ Youth Events

Entry fee \$100 per team/single. 1 driver per team/single driver

\$50.00 for youth driver (Must be accompanied by experienced driver)

Todd & Christina Reid

785-787-0369, 785-787-2695

Christina.reid1977@gmail.com



a KHC Region 1 Event

July 19 & 20, 2024



American Royal Ranch Riding Clinic

American Royal Competitive Educational Activity Coordinator:
Regan Culp, reganc@americanroyal.com, 816-569-4043

Date & Location of Clinic: Friday, August 2, 2024, at 6:30 PM CST in Tom Bass Arena

[Register Here](#)

Entry Fee for Youth Riders: \$65.00

Entry Fee for Adult Riders: \$75.00

Clinic Instructor: Jason and Carrie Cook

About

Ranch riding is a form of equestrianism that celebrates western traditions and showcases the practical skills expected of a working ranch horse. During this clinic, riders will work through patterns that encompass a wide range of maneuvers related to a ranch horse's tasks, such as herding cattle, navigating obstacles, and showcasing adaptability and versatility. Ranch riding is inclusive of all breeds and its focus is on the natural abilities of the horse and the rider's horsemanship.

This clinic can provide riders with the knowledge and skills to partake in different Ranch Riding Classes, such as Working Cow Horse, Cutting, Ranch Trail, Ranch Reining, and Ranch Pleasure. Ranch riding also creates versatility within the horse. While deepening the partnership between the horse and rider. Join us for this educational clinic and embrace the time-honored traditions of America's working ranch horse!

Registration Deadline: August 1, 2024



There is a lot of talk in farm circles and rural coffee shops these days about foreign ownership of U.S. farmland, especially by our adversaries. State legislatures around the country and our own U.S. Congress are addressing these issues.

Even domestically, it is interesting to look at the largest landowners in the U.S., how that land was acquired and who is looking for more acres and why.

In this edition of Farm Files, Sarah and Curt talk about land ownership issues, and what they are seeing in their own backyards.

Is Bill Gates the biggest owner of farmland in the U.S.? What foreign interests are most invested in U.S. farmland?

What are state legislatures and Congress doing that might impact land ownership domestically, or even how family farm corporations are reporting their land holdings? These issues and more are tackled in this Farm Files episode of FP Next, powered by John Deere.

[Listen to the Podcast Here](#)

“Kansas grazing lands play a key role in the economic sustainability of the cattle industry, which contributes significantly to our state’s economy. Grasslands are one of our most valuable natural resources, and they support livestock grazing, healthy watersheds and wildlife habitat. Therefore, conserving our rangeland and native grasslands is a priority for KDA.”

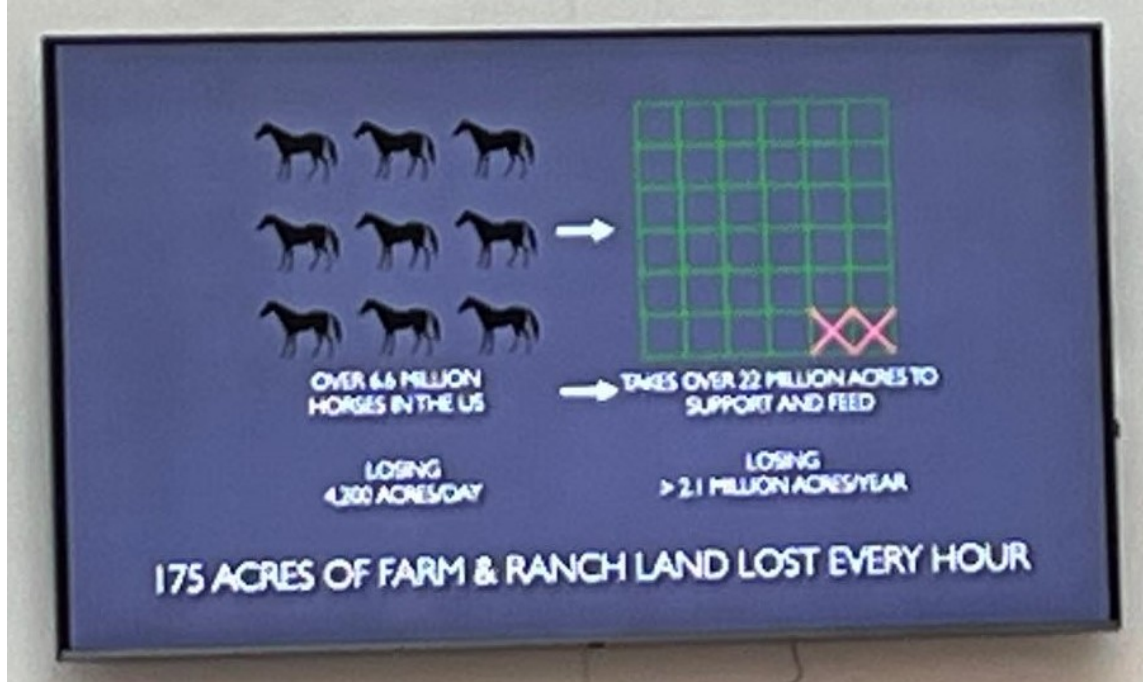
-Mike Beam

Secretary

Kansas Department of Agriculture



Kansas Department of Agriculture is working to preserve native grasslands in their state! Learn about the critical role grasslands play in the state and economy from Kansas Agriculture Commissioner Mike Beam.



From the American Horse Council presentation on Recreation, Trails & Land Use during the National Issues Forum.

Losing 175 acres of farm and ranch land every hour in the United States. 2.1 million acres per year. Loss of land needed to feed our population, raise livestock, or have a horse industry, which includes grazing, stabling, and riding.

Horses are livestock...and we all care about land loss!



What We Can Do to Protect Our Horse Lands, Facilities and Trails



With land development occurring around the country, and coming closer to agriculture-zoned properties, you may be interested in learning more about how to protect your property from development.

In “Conservation Easements as a Tool for Protecting Horse Lands” you can learn more about Conservation Easements, including what they are, how they benefit a property, and how to qualify for one in the link below.

The booklet “Purchase of Development Rights Programs in the U.S” discusses the differences between a Conservation Easement and a Purchase of Development Rights, how to find funding, and examples of programs from around the country.

[Conservation Easement Link](#)

[PDR Programs](#)



BreyerFest 2024

BreyerFest is a celebration of horses featuring Breyer models and the real horses that inspired them! It is unlike any festival or horse show you've ever seen.

Join us online at BreyerHorses.com or in-person at the Kentucky Horse Park July 12-14, 2024!

Our unique hybrid format allows fans from across the world to experience all BreyerFest has to offer, from the excitement of the equine entertainment, to getting to know your favorite Guest Horse!

Fans can also see incredible works of model horse art, learn more about the model horse hobby, and gather with Breyer friends from around the world sharing their own inspiring stories.

Breyer Fest



Mounted Patrol Competition, New York

Featuring Livingston County Sheriff's Mounted Patrol Unit

- Wednesday, July 17th at 12pm

The Mounted Patrol competition has been hosted by the Livingston County Sheriff's Department for nearly 20 years. Local counties (including Livingston, Monroe, Wyoming, Niagara & Chautauqua), as well as teams from the Rochester Police Department and the Governor's General Guard in Canada, bring mounted units to train and compete. Men and women compete equally, as neither sex has an advantage on their mount.

Individuals compete on a course of 10 street-based obstacles, designed to reflect real-world scenarios. These include a construction noises, crowd

control, suspect apprehension, escorting a patrol car and others. Each year, the course is slightly different.



the HORSE

Common Myths When Cooling Horses

Myth 1: Heat illness (e.g., heat stroke, exhaustion) only affects horses in hot and humid

weather conditions.

Myth 2: Do not apply cold water on hot horses because this can cause shock, colic, or tying up.

Myth 3: Always scrape off water because leaving water on the horse will prevent him from cooling down.

Myth 4: Leaving a wet towel on the horse aids cooling.

Myth 5: All horses cool down in the same manner.

Myth 6: Horses exercising at high intensity reach their peak core temperatures during peak exercise.

For full details about these myths visit ***the Horse*** in the link below

[*Read Full Article Here*](#)



27



FCA RODEO DAY CAMP

July 18th & 19th, 2024 — 9am to 4pm - Louisburg, KS

OFFERING THE FOLLOWING EVENTS FOR DAILY CLINICS:

- Barrels
- Poles
- Roping

FEATURING:

Zoey Sharp - Barrels & Poles
Jason Williams - Roping

COST:

Athletes: \$125

Scholarships available
contact kimjohnson@fca.org

REGISTER NOW:

<https://fca.regfox.com/2024kcrodeo>

FOR INFORMATION CONTACT:

Kimberly Johnson, Camp Director
kimjohnson@fca.org

INCLUDES:

Campers will be going home with a custom
FCA Rodeo t-shirt and FCA bible!!

**for cowboys and cowgirls ages 10-18*

**must bring your own horse*



**REGISTER
HERE!!!!**



F E L L O W S H I P O F C H R I S T I A N A T H L E T E S

9:00am-4:00pm July 18th & 19th in Louisburg, KS

For girls and boys ages 10-18

Events offered: Roping, Barrels, Poles

Stay updated here: [\(20+\) FCA Rodeo Day Camp!!!! | Facebook](#)

BACK COUNTRY HORSEMEN

OF KANSAS



August 31 - Annual Benefit Ride & Auction, Wild Horse Equestrian Campground, Perry State Park, Perry Lake.

Call Park office to book campsite, 785-246-3449.

Follow Let's Ride--Perry Lake on FB for details.

October 11-13 - Annual Benefit Ride & Auction, Eisenhower State Park, Melvern Lake. Call Park office to book campsite, 785-528-4102. Watch for ride flyer on FB at Back Country Horsemen of America Kansas Chapter.

October 19 - Annual Moonlight Ride & Chili/Pie Supper, Perry State Park. Follow Let's Ride--Perry Lake for details.

**Experience the
Exmark difference!**



Your horses can save you money on a new Exmark mower!



A COWBOY'S DELIGHT

by Del Shields Cowboy Music and Poetry

All was quiet in the dry camp. The horses picketed with heads hanging low.

The stars burned bright. It was one of those nights, when you hated to see it go.

Bruce played softly on his dented harmonica. It was soothing to man and



beast.

Over the ridge orange met purple, as a harvest moon lit up the east.

Way off in the west, we heard a rumble or two. The sky flickered flashes of light.

We paid no attention for we saw that so oft. It seemed a world in which cowboy's delight.

All tuckered out and all fast asleep, the campfire burned itself out. Then a crack and a flash and a downpour cut loose and the trail boss cried out with a shout.

The storm had turned round. It snuck right in upon us. Not one of us heard of its warning.

Now she's raging like fury and we're all in a scurry. Cowboys were praying for morning.

Horses were pulling the picket lines down. They were twisting and tangled in rope.

In the lighting's bright flashes and the thunder's bold crashes, it was hard to hang on to your hope.

Then a wagon got hit by a light bolt. It was burning with smeltering smoke.

Cattle were running right straight through the camp. In the fog you could hear cowboys choke.

As the chaos and mayhem rained fury on us, it seemed like the end of the world.

It kept raging on and we lost some good mounts, as the cattle ran round in a swirl.

As the east broke in grey, we all knelt to pray, for survival was granted to some.

We lost Jimmy and Ted and old Johnny's near dead. He asked Cookie, "do you still hide some Rum?"

Our cowboy delight turned to panic and fright. Now sorrow has crept into camp.

We'll say some words over these, and ask the Lord please, to receive these hard working top hands.

Well, there's good men to bury and steers to round up, and horses that's needing put down.

We'll telegraph family and inform them of loss, as soon as we reach the next town.

There's not a cloud in the sky, as the meadowlarks sing. The air is as fresh as can be.

There's a cool breeze blowing. It feels perfect and right. Like someone is smiling on me.

We'll never forget this drive and its loss. I give thanks that I lived through that night.

But today's a new trail with the sun in my face. Sort of feels like a cowboy's delight.



Best of America by Horseback

Don't miss the chance to ride in the "Cowboy Capital of the World" at Bandera, Texas!

Del Shields is bringing the National Television Show "Best of America by Horseback" on RFD-TV to the stunning Texas Hill Country from October 18-20, 2024.

Join Del and his crew to experience the beauty of South Texas by horseback. We'll be camping at Chapa's Campground, a bucket-list location for Del, renowned for its rich western history.

Rides will take place in the Hill Country Natural Area on Friday and Saturday. On Sunday, the adventure continues along the river into town, where riders will tie up at the hitch rails and enjoy lunch at one of the town's historic establishments.

Spots are limited, so sign up soon!
Oct 18-20, 2024

Hill Country State Natural Area - Bandera, Texas
Call: 620-433-1819 to make a ride reservation

Don't miss this chance to ride in true cowboy style!



Best of America by Horseback 2024

Call: 620-433-1819



THE GOLDEN HISTORIC HORSE RACING FACILITY



**WICHITA
ON THE CHEAP**

What is historical horse racing?

- It's a way of gambling. You bet on horse races that have happened already.
- They are like slot machines. They have spinning pictures, and it sounds like a slot machine.
- You will get information about the horses and jockey before placing your bet.
- The player chooses the order of horses, or you can choose to have the machine choose for you.
- The new facility will be called the Golden Circle Historic Horse Racing Facility.

About the facility:

- It is going into the old Greyhound Park in Park City that closed in 2007.
- It's 3 stories tall.
- Phil Ruffin is behind the project that will cost roughly \$100 million dollars.
- There are 80 acres of land for the new project.

COMING TO WICHITA IN SEPTEMBER 2025

5 Tips For Equestrian Camps

1



Clean up ALL manure

READ THE RULES: Place all manure in it's appropriate place before departing. Manure Bunker, pack it out or spread it. (but avoid throwing at base of trees) **READ the RULES.**

3



Leave Nothing Behind

Twine or hooks use to fasten buckets, gates, or haybags should be removed. These can be hazards for Equines

4



Bedding is a NO NO!

Your trail groups work very hard to place sand in the corrals for your equines comfort. Shavings mix in and prevent the natural drying of sand.

If corrals are prepared with limestone or gravel, and bedding is needed, then be sure **LARGE** flake shavings are used and **COMPLETELY CLEANED UP.**

5



Pitch In

Watch for WorkBees happening at your favorite Equestrian Trails and Camps, Follow them on social media, invite your riding friends and lend a hand. **Volunteers are ALWAYS needed and so appreciated.**

Michigan Horse Trails Directory

**Good things to remember when visiting any equine
camping facility, anywhere!**

Please respect spaces, wherever you may visit!

JULY INSPO!



Kansas Horse Council Membership

Benefit Alert!

Equine Discounts provides exclusive discounts on nationally known products for everyone in the horse world. We are currently partnered with John Deere, Big Ass Fans, Sherwin Williams, ODP Business Solutions, and Farmers Insurance. We offer equine members steep discounts on everything from paint, fans, and office supplies to farm equipment such as tractors, mowers, hay equipment and Gators™!

Anyone with a paid membership to any equine association (such as Kansas Horse Council) qualifies for Equine Discounts.

A percentage of every sale through Equine Discounts is returned to the Equine Industry!

Call 866-678-4289 to start saving today!





Equine National Plan

The United States (US) horse industry involves activities in all regions of the country and the world. Horses are considered livestock and are unique in the livestock sector because of their broad diversity.

The equine industry involves business, working animals, sport, recreation, entertainment, gaming, and environmental support, all built on the agri-business of breeding and raising equine.

In addition to economic benefits, it also produces other intangible benefits to people and the US, including recreation, exercise, working animals, stress reduction, and entertainment.

The overall goals of the NEHP are as follows:

- Protect the health and welfare of horses in the US and North America;
- Facilitate the continued interstate and international movement of equine and associated products with science-based requirements and standards;
- Protect the business continuity and economic viability of the equine industry;
- Establish the role of the industry, federal and state authorities, and tribal governments in equine disease prevention and control and in natural disasters; ensure the availability of current diagnostic testing, inspection, and certification services; create and maintain a communication system which provides timely and rapid dispersal of accurate information about disease outbreaks;
- Provide guidelines for control, identification, and containment of equine diseases;
- Support and make available educational programs for horse owners and industry representatives on disease identification and prevention.

Click on the link below for further details

[National Equine Health Plan](#)



Know a horse owner in need of assistance? Find support services and safety net programs today.

UNITED HORSE COALITION
EQUINE RESOURCE
DATABASE

WWW.UNITEDHORSECOALITION.ORG



What are the signs of gastric discomfort in horses?

Poor coat condition

Teeth grinding (bruxism)

Changes in behavior, including aggression, nervous behaviors, side biting and "girthiness"

Acute or recurring colic

Poor performance

Poor appetite

Picky eating

Poor body condition

Weight loss

Chronic diarrhea



DID YOU KNOW...It's FREE to Access the Horse Trails of America Map

THE map is **free to access**, but we do ask that all sign in and make an account so that we can keep our community safe. Here's where to make your membership (or take advantage of the six-month free trial for the Trail & Travel Membership): <https://www.horsetrailsofamerica.com/start-membership>. Or if it's easier to remember, [HTA.horse](https://www.hta.horse) will take you to the same spot.

Watch the Video

Want more help? Here's a how-to video to walk you through all the features and what to do. Watch the YouTube channel—and be sure to hit subscribe and like once you're there: <https://www.youtube.com/watch?v=2rQm8Lnd3ko>

The map is up to 1400 locations. If you're looking for a layover or have one to add please make <http://HTA.horse> your first resource. You can review what's up already and post more! We would love to have you post fairgrounds too!



AQHA
PRO
HORSEMEN
ACADEMY
PRESENTED BY  **Boehringer**
Ingelheim

JANUARY
14-16, 2025
SOUTHPOINT HOTEL & CASINO • LAS VEGAS

REGISTER
NOW



Boehringer + AQHA Professional
Horsemen Academy Register Here

THE ROLE HORSES PLAY

With therapy involving horses, emotions don't need to be verbalized. Horses, with their intuitive and non-judgmental nature, offer clients a safe space to connect with their feelings in a powerful way.

Donate today by visiting horsesformentalhealth.org/campaign.
Additional thanks to Zoetis Equine.

#SeenThroughHorses #HorsesforMentalHealth #mentalhealthawarenessmonth
#ZoetisEquine #LongLiveTheHorse

Check out Forrie J. Smith's Poem for #Seen Through Horses



www.hereforhorses.org

American Royal



Our horse show season is just around the corner! We're kicking off an exciting

summer with the Royal Showcase, August 3-4 in Hale Arena

Applications are open for the Royal Showcase BOTAR Scholarship, which is available to youth participants. This \$1,500 scholarship is made possible by the BOTAR organization and their generous support of the American Royal.

View the showbill, review the rule book and enter the show in the link below

[Royal Showcase](#)



It's not too late to enroll for 2024.
Have you renewed for 2024?
For those currently enrolled, don't forget to submit your
HRP logged hours!

[HRP SIGN UP](#)

**Back Country
Horsemen
of Kansas**

**10 years
2014-2024**

Keeping equestrian trails open for future generations.

Kansas Back Country Horsemen of America

Did you know 2024 is BCHKS' 10-year anniversary?
Want to know more about Back Country Horsemen- Kansas?

Like and Follow on Facebook:

[\(20+\) Back Country Horsemen of America Kansas Chapter | Facebook](#)

Many fall trail rides offer opportunities to support trails and trail improvement projects.



Broccoli Apple Salad

Tacoselchilango

Ingredients

- 4 c. Broccoli Florets (*small, diced*)
- 2 small Gala apples (*cored and diced*)
- 1 c. Walnuts
- 1 c. Matchstick carrots

- 1/2 c. Dried cranberries (*and/or Golden Raisins*)
- 1/4 c. Red Onion (*chopped*)
- 3/4 c. Plain Greek Yogurt
- 1/3 c. Mayo (*your favorite*)
- 1 1/2 T. Apple Cider Vinegar
- 3 T. Honey
- Salt

Directions

For the dressing:

- In a medium mixing bowl whisk together Greek yogurt, mayonnaise, vinegar, honey and season with salt to taste (about 1/4 tsp). Chill until ready to use.

For the salad:

- In a salad bowl toss together broccoli, apples, walnuts, carrots, raisins or cranberries and red onion. Pour in dressing and toss until evenly coated.

Kansas Horse Council Specialty License Plate

- Kansas Horse Council license plates are available at your local County Treasurer's office.
- You don't have to be a member to sport one, on your car, truck or trailer!
- Show your love of horses with this colorful statement plate!

KHC License Plate Info



ENJOY THE RIDE WITH KHC!!

GET A KANSAS HORSE COUNCIL TAG
PROUDLY SHOW YOUR SUPPORT FOR KHC AND THE WORK IT DOES.

KANSAS HORSE COUNCIL PLATES
are available to anyone who owns or leases an automobile, RV, truck or trailer with a gross weight of 20,000 pounds or less.

WHAT YOUR TAX DEDUCTION SUPPORTS

- RECREATIONAL AND TRAIL MAINTENANCE
- EQUINE HEALTH AND WELFARE
- EDUCATION PROGRAMS
- YOUTH ACTIVITIES AND SCHOLARSHIPS

HOW TO GET YOURS:
TROT over to your County Treasurers Office
FILL OUT a Kansas Royalty Tag form
PAY a one time production charge of \$50.00 plus title fees, registration fees, personal property tax and a \$30 donation to the Kansas Horse Council. The \$30 tax deductible donation will appear on your paperwork every year when you renew! If the vehicle is currently tagged, the original plate must be returned and the current owner's registration and proof of insurance will need to be provided.

Kansas Horse Council
www.kansashorsecouncil.com



BACK COUNTRY HORSEMEN OF KANSAS

What's the best way to stay informed of BCHKansas news and activities?

Follow Facebook.

There are several Facebook pages set up to keep BCHKansas members and all equestrians up-to-date on activities on several of our public trails. Here's a list:

Back Country Horsemen of America Kansas Chapter
Sunflower Chapter of Back Country Horsemen of Kansas
Saddle Ridge Chapter of Back Country Horsemen of Kansas
Tuttle Creek Chapter of Back Country Horsemen of Kansas
Saddle Ridge Chapter
Big Hill Lake Riders
Friends of Randolph State Park
Friends of Rockhaven Park
Let's Ride—Perry Lake
Kanza Rail Trails Conservancy

Receive notifications of workdays or see reports on trails-maintenance or campground improvements. Join in on workdays whenever possible!

Follow the www.bchkansas.com website.

Encourage a new member to join BCHKS and be entered into an end-of-year drawing.

BCHKS 2023 Volunteer Hours Summary

Across Kansas, BCHKS volunteers are assisting in the maintenance of trails on public lands. We do make a difference! Equestrian volunteer work hours on Kansas public lands in 2023 are as follows:

(Formulas provided by BCHA and determined by The Independent Sector.)



Backcountry Horsemen of America - Kansas Volunteer Hours Report January - December 2023			
	Totals	Rate per hour/mile/day	Total Value
Total Basic Hours	539	\$29.95	\$16,143
Total Skilled Hours	1398	\$44.93	\$62,812
Non-Trail Hours	1076	\$29.95	\$32,226
Travel Time	201	\$29.95	\$6,020
Total Hours	3214		\$117,201
Personal and Stock Use	11738	\$1.00	
Total Travel Miles	11738		\$11,738
Power Equipment	730	\$30.00	\$21,900
Heavy Equipment	165	\$110.00	\$18,150
Total Equipment Hours	895		\$40,050
Total Stock Days	152	\$100.00	\$15,200
Total Donations	\$11,466		\$11,466
	Total		\$195,655

Keeping Kansas Trails Open for Future Generations!

2023 Trail & Campground Improvements

Join both BCHKS and Kansas Horse Council at discounted rate with one payment.
www.kansashorsecouncil.com

Big Hill Lake BCHKS:

~ New water hydrant at Timber Hill Trailhead funded by endurance ride donation

Chisholm Trail BCHKS:

~ Planned & hosted 6 Fill-the-Campground events (donation of manure cart to each)
~ BCHA \$500 grant funded safety vests, eye/ear protection, hand tools, chainsaw

Clinton Lake (Sunflower BCHKS):

~ Benefit ride raised \$850 for ongoing trail maintenance projects

Eisenhower State Park, Melvern Lake (Sunflower BCHKS):

~ Several new cross trails added to trail system
~ Benefit ride funds used to build round pen at West Point Equestrian Campground
~ Benefit ride raised \$5,480 for campground/trail improvements
~ Hosted Best of America by Horseback in September

Hillsdale State Park (Saddle Ridge BCHKS):

~ Hosted Best of America by Horseback in September
~ Installation of new bathroom near shelter house by park management
~ All campsites now have pen
~ Extensive clearing and widening of trails
~ Fundraiser event raised \$3,000 for trail/campground improvements

Kanopolis State Park:

~ Benefit rides raised \$1,450 for trail/campground improvements

Perry State Park (Sunflower BCHKS):

~ Benefit ride raised \$5,890 for campground/trails
~ Benefit funds used to rebuild tractor used for mowing trails
~ Water and electric lines updated by State Park management
~ Work began on site for new arena

Randolph State Park (Tuttle Creek BCHKS):

~ Benefit ride raised \$1,200 for campground/trail improvements
~ BCHKS grant funded purchase of two manure carts for campground

Since 2014, equestrian volunteers have donated 29,538 hours toward the preservation and maintenance of trails on Kansas public lands with a value of \$1,902,543!

BCHKS, celebrating 10 years in 2024!!

bchks.com or bcha.org

On Facebook - Back Country Horsemen of America Kansas Chapter

**In 2023, BCHKS
volunteers
contributed
3,214 hours of
work on public
trails. This
equates to
\$195,655!**

Joint membership with KHC & BCH-KS for you!



Kansas Chapter



JOINT MEMBERSHIP AVAILABLE IN BOTH ORGANIZATIONS!

Individual: \$80 (\$15 to BCHA/\$15 to BCH-KS/\$15 to KS Chapter of Choice/\$20 for insurance/\$15 to KHC)
Family: \$100 (\$15 to BCHA/\$15 to BCH-KS/\$15 to KS Chapter of Choice/\$40 for insurance/\$15 to KHC)

Trails Advocate Level Individual: \$80

Trails Advocate Level Family: \$100

One enrollment to support two organizations!
Simple and makes sense!

INTERSCHOLASTIC
EQUESTRIAN
ASSOCIATION



GET A
JUMP
ON THE **2023-2024**
IEA SHOW SEASON



Join Now! Competitions begin August 1st.

**Attention Kansas lesson barns, you too
could become an (IEA) Interscholastic
Equestrian Association facility and
partake in shows & awards!
Checkout their Facebook page and
website, www.rideiea.org**

Kansas Horse Council Rewards Programs



DILLONS COMMUNITY REWARDS PROGRAM:

- When you shop at Dillons and use your Rewards card, KHC will earn a percentage rebate based on your Dillon's purchases!

To link & register your rewards card click here: **Dillons Rewards Link** and log into your existing account. Search for Kansas Horse Council or enter our NPO number, KS920 and click Enroll. New users will need to create an account which requires some basic information, a valid email address and a *Rewards Card. *You must have a registered Dillons Food Stores rewards card account to link the Community Rewards program to Kansas Horse Council. (Cards are available for FREE at any Dillon's customer service desk.) SHOP: Purchases will not count towards rebates for KHC until you register your rewards card and link to Kansas Horse Council here: **DILLONS REWARDS LINK Registered Rewards Cards** must be swiped at checkout or use your phone number registered with your Rewards Card when shopping for purchases to count. This program does not affect your Fuel Points balance. Points will still accumulate for your personal use. Rebate program is based on purchases at Dillon's stores payable to Kansas Horse Council as a Non-Profit Organization. Thank you for your continued support to the voice of equine enthusiasts in Kansas!



Earn Horsemanship points for the quality time you spend with horses, mules, donkeys, ponies and minis!

Registered or Grade, owner or non-owner, or as a volunteer, we want to recognize your participation in Equine Activities!

(“Activities” do not include feeding, stall cleaning and general maintenance.)

Examples include groundwork, grooming, trail, recreational riding, schooling, lessons, competing, driving, training, exercising and other horse care.

Earn points by volunteering at a therapeutic riding program or an equine rescue.

\$35 for first time enrollment & \$15 each renewal year to rollover your cumulative hours. Enroll now!

[SIGN UP FOR HRP HERE](#)

IT'S TIME
TO JOIN UP



EARN
REWARDS

WANTED



ALL EQUINE LOVERS

THE



PRESENTS



HORSEMANSHIP REWARDS PROGRAM

Earn rewards while working with your favorite equine friends!

This program is open to anyone who enjoys working with horses, minis, donkeys, ponies, or mules, including "grade" equines.



This program recognizes participation in Equine Activities such as riding, schooling, competing, showing, training, ground work, driving, exercising, and assisting in a Therapy Program or Rescue. The program does not include feeding, stall cleaning and maintenance.

Awards are given at 25, 50, 100, 250, 500, 1000, 1500 & 2000 hour milestones.
Upon 2000 hours completed, members are welcome to re-enroll and start again!

PROGRAM RULES & REQUIREMENTS:

- Must be a current KHC Member.
- Must pay a \$35.00 initial program enrollment fee the first year and then a \$15.00 annual program fee thereafter.
- May ride or handle more than one horse and it is not necessary to be the owner of the horse.
- Hourly log sheets may be submitted monthly, quarterly or annually. Annual submissions must be postmarked no later than December 31st.
- The KHC Member participant will need an Individual membership to track member rewards by name.
- Rewards points are not retroactive. Date of log begins on enrollment date.
- Rewards are subject to change based on availability.

FOR MORE INFORMATION CONTACT:



KANSAS HORSE COUNCIL, 8831 QUAIL LANE, SUITE 201, MANHATTAN, KS 66502
www.kansashorsecouncil.com | 785-776-0662 | Fax 785-539-2928 | director@kansashorsecouncil.com





EQUINE DISCOUNTS

A percentage of every sale is

returned to the equine industry!



As a member of KHC, you are eligible for these discounts.



JOHN DEERE

John Deere offers substantial discounts on everything from mowers and tractors to Gator™ Utility Vehicles, hay and construction equipment.

- The MSRP Program: up to 28% off
- The Cash Bonus Program: up to \$2,700 off
- Construction Equipment: up to 26% off



BIG ASS FANS

BAF is committed to Energy Efficient Air movement and providing comfort to the equine industry. Equine members will receive up to a 25% discount on qualifying purchases for all Equine Facilities and Personal Residences.



By establishing a Sherwin-Williams account, members are eligible for these great benefits:

- 35% off paints at list price
- 30% off brushes, rollers and associated products at list price



ODP Business Solutions™ (formerly Office Depot) and Equine Discounts have partnered to provide exclusive benefits and savings on a wide selection of office products and services.



@myequinediscounts



@myequinediscounts

Call 866-982-6872 to start saving!
EquineDiscounts.com



Learn About Kansas Horse Trails! RIDE Kansas!

Saddle Up and RIDE Kansas! Visit our Kansas Department of Wildlife and U.S. Corps. of Engineers equestrian facilities. Visiting and riding or camping shows support of our parks, and keeps them open for future use and possible funding of improvements. Always leave only hoofprints behind. Share our multi-use trails. Call before you haul if in doubt before your visit.



Do you have your copy of our Equestrian Trails in Kansas?

Copies are provided FREE at all Kansas Horse Council events, or \$3 for s/h and we'll mail you one.

These guides are also available at all KDWP offices.

Trail info is also available online here:

Public Trails in Kansas



Kansas Horse Council | 8831 Quail Lane Suite 201 | Manhattan, KS 66502 US

[Unsubscribe](#) | [Update Profile](#) | [Constant Contact Data Notice](#)



Try email marketing for free today!