

***KANSAS HORSE COUNCIL NEWSLETTER.
NEWS FOR KANSAS AND THE EQUINE INDUSTRY.***

June 2023 EDITION

**News, announcements and events from around Kansas,
regarding the Kansas equine industry.**

**Legislation, Insurance, Equipment & Retail discounts are just
some of our membership benefits! Visit our website to learn
more.**

Join our herd!



**Visit Our
Website!**



JOIN OR RENEW FOR 2023!



www.kansashorsecouncil.com

2023 Upcoming Events and Calendar

This month there are shows, rodeos, trail rides, and more!

See them here:

[Calendar of Submitted Events](#)

Any questions regarding events, please call us at

[785-776-0662](tel:785-776-0662)

If interested in more information or to register for an event, please email us at director@kansashorsecouncil.com



The Kansas Horse Council Foundation was pleased to present 14 academic scholarships this year during the annual awards banquet held Wednesday, June 14, 2023.



Pictured L to R back row:

Kelli Kychik, Courtney Clinesmith, Chancy Johnson, Emily Stamper, Lexi Studebaker, Tee Koch.

Picture L to R front row:

Talor Sutton, KHC President-Kallie Emig, KHC Executive Director- Justine Staten, Ally Leslie

Not Pictured:

Caitlyn Champagne, Morgan Clinesmith, Aubrey Gerdes, Alexis Gerdes, Cash Fuesz, Rileigh Holcomb



Congratulations to our State Champion
4-H Horse Judging Teams
at the 2023 State 4-H Horse Judging Contest -
Saline County Expo Center!

Senior Champions- Flint Hills District: Gus Wainwright,
Mandy Wainwright, Lexi Todd and Casten Andres

Intermediate Champions- Pottawatomie County: Harriet
Kleinhenz, Ashlynn King and Grant Slough



*FOR IMMEDIATE RELEASE June 20, 2023 Kelsey Nordyke, 4-H Program Specialist-Southeast Region
K-State Research and Extension/Kansas 4-H; Manhattan, KS*

KANSAS STATE 4-H HORSE JUDGING CONTEST RESULTS

Thirty Kansas 4-H members from across the state participated in the 2023 Kansas State 4-H Horse Judging Contest June 15 at the Saline County Expo Center in Salina, KS. This competitive event for Kansas 4-H members ages 9-13 included judging six horse classes and oral reasons for two age divisions- intermediate (age 9-13) and senior (age 14-18). The event was hosted by Kansas 4-H Youth Development in partnership with the Kansas State University Horse Judging Team.

Volunteers from across the state were recruited to ride and exhibit horses in Western Pleasure, Western Horsemanship, Ranch Riding, Trail, Performance Mares and Performance Geldings. KSU Horse Judging Coach, Celsey Crabtree was instrumental in organizing the classes. KSU Horse Judging Team members provided official placings for each class and scored reasons for both age divisions.

Animal judging activities help youth become competent in animal evaluation. Traditionally, animal evaluation contests are offered in livestock, dairy, horse and poultry project areas. The purpose of judging contests is to encourage the critical evaluation of livestock and horses as a way to improve the animals.

Youth judging contests provide 4-H members with valuable life skills including the ability to verbally defend a decision, animal industry knowledge, decision-making skills, oral communication, organizational skills, problem solving, self-confidence, self-discipline, self-motivation, and teamwork. Youth learn valuable decision making and problem solving skills while learning to “think on their feet” to determine the most logical ranking for each class. Decisions are made during the contest to recognize and determine desirable and undesirable traits in conformation as well as performance (riding) classes. Public speaking skills are gained through delivery of oral reasons, a method of defending or explaining one’s placing of a class to a judge. Reasons are presented in a logical and professional manner, allowing youth to become more proficient in their oral delivery skills.

Judging contests involve 3-4 youth acting as independent members of a team to evaluate and place a class of four animals from most desirable to least desirable. Animals are placed based on a set of industry standards. Through placing classes, youth learn skills in recognizing industry standards while learning to prioritize various traits. Participants in judging contests are independent members of a team whose scores collectively make up a team score.

Skills learned through participation in youth judging programs include the ability to verbally defend a decision, animal industry knowledge, decision-making skills, oral communication, organizational skills, problem solving, self-confidence, self-discipline, self-motivation, and teamwork. Youth learn valuable decision making and problem solving skills while learning to “think on their feet” to determine the most logical ranking for each class. Decisions are made during the contest to recognize and determine desirable and undesirable traits in conformation as well as performance (riding) classes. Public speaking skills are gained through delivery of oral reasons, a method of defending or explaining one’s placing of a class to a judge. Reasons are presented in a logical and professional manner, allowing youth to become more proficient in their oral delivery skills.

Teams from Flint Hills Extension District, Marais des Cygnes Extension District and Pottawatomie County took top honors at the contest. Pottawatomie County’s intermediate team placed first in its division. Team members include Harriet Kleinhenz, Grant Slough and Ashlynn King. Harriet Kleinhenz was the top intermediate. The Flint Hills District intermediate team placed second in their division. The Flint Hills District senior team consisting of Mandy Wainwright, Gus Wainwright, Lexi Todd and Castyn Andres were named Senior Champions with Castyn Andres placing first individually. Marais des Cygnes was second place senior team. The champion senior team receives the honor of representing Kansas 4-H at the Western National 4-H Roundup Horse Judging Contest in Denver, CO in January. Additional information as well as complete results can be found on the Kansas 4-H website at <https://bit.ly/StateHorseJudging>.

For more information contact: Kelsey Nordyke, 620-222-1311, knordyke@ksu.edu



Support a Foundation
Endowment for KSU Horse
Judging Team

Scholarships

***Team
Travel***

**Extension
Outreach**

Celsey Crabtree
celseyb@ksu.edu
913-267-4805



Save the Date

Mark your calendar for 2023 Kansas Ag Summit

The main Summit event and social event will be held at the following times:

Social Event: Wednesday, August 16, 6:00–8:00 p.m.

Ag Growth Summit: Thursday, August 17, 8:00 a.m.–2:30 p.m.

Stay Tuned for details about the Equine Sector Session!

The Foundation For The HORSE



As Canada's uncontrolled wildfires spread across the country, we stand ready to dispatch aid wherever natural disasters affect horses. When natural disasters strike, our Foundation works tirelessly with trusted partners providing urgent veterinary care for horses in need. Please make a gift for Disaster Relief today.

<https://give.aaep.org/CSiDonate/Give.aspx/A68YXH8D/#c>

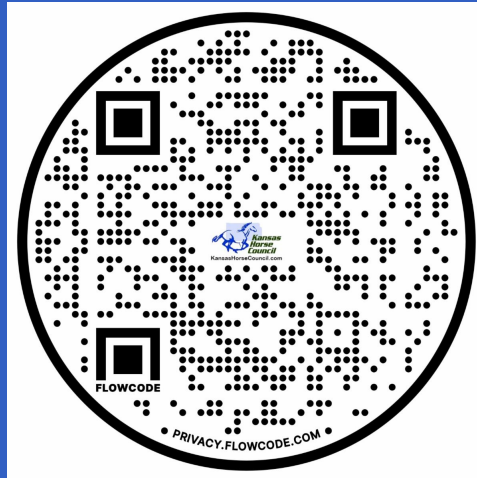


LINK TO GIVE

Don't Miss This Great KHC
Benefit:

Subscription opportunity to The
Horse Magazine at 90%
DISCOUNT off retail-
Only \$5 for the year to Kansas
Horse Council Members!

*the***HORSE**
YOUR GUIDE TO EQUINE HEALTH CARE



Scan the QR Code to sign-up for your reduced subscription
TODAY!!



Jay Snider of Cyril, Oklahoma, has been appointed by Governor J. Kevin Stitt to serve as the 2023-2024 Oklahoma State Poet Laureate. Snider is an award-winning cowboy poet and recording artist who has appeared at national and regional events. He is widely recognized in the Oklahoma cowboy poetry community

and is a frequent contributor to programs presented by the Chisholm Trail Heritage Center in Duncan, Oklahoma. The tradition of officials conferring poets laureate to make public appearances and promote a greater appreciation of poetry originated hundreds of years ago.

Jay was born and raised in southwest Oklahoma. His dad was a top roper and rodeo cowboy and his granddad was a brand inspector for the Texas and Southwestern Cattle Raisers Association. He rodeoed throughout most of his early years and now stays busy raising ranch horses and cattle, and team roping. Jay continues to judge a few amateur rodeos around home and hosts annually the Invitational Rafter S Ranch Cowboy Reunion.

Read more: [Governor Stitt Appoints Jay Snider of Cyril as 2023-2024 Oklahoma State Poet Laureate](#)

[Enjoy a past YouTube video of Jay.](#)



ODE TO JAY SNIDER by Del Shields

He stood upon a makeshift stage, in a dusty hay filled barn.
Before him was a rural crowd, who'd come to hear his yarn.

Outside the rain was falling. Inside the hearts were warm.
All, together, were grateful for the long awaited storm.

With microphone held to his lips, he shared his words of
choice. Every soul sat captive to his deepened cowboy
voice.

His tales were of the old days when cowboy camps were
homes. the listeners ears were carried back to where the
punchers roamed.

With grace and wit the stories came. They left us wanting
more. They had a way of bringing worth you can't buy at
the store.

One cowboy sharing history in perfect meter and rhythm.
Like a panoramic movie scene he carried us back in time.

You could almost hear the cattle bawl, smell the sagebrush
in the morning dew. It was like you were there at the
branding fire, and you were roping and dragging too.

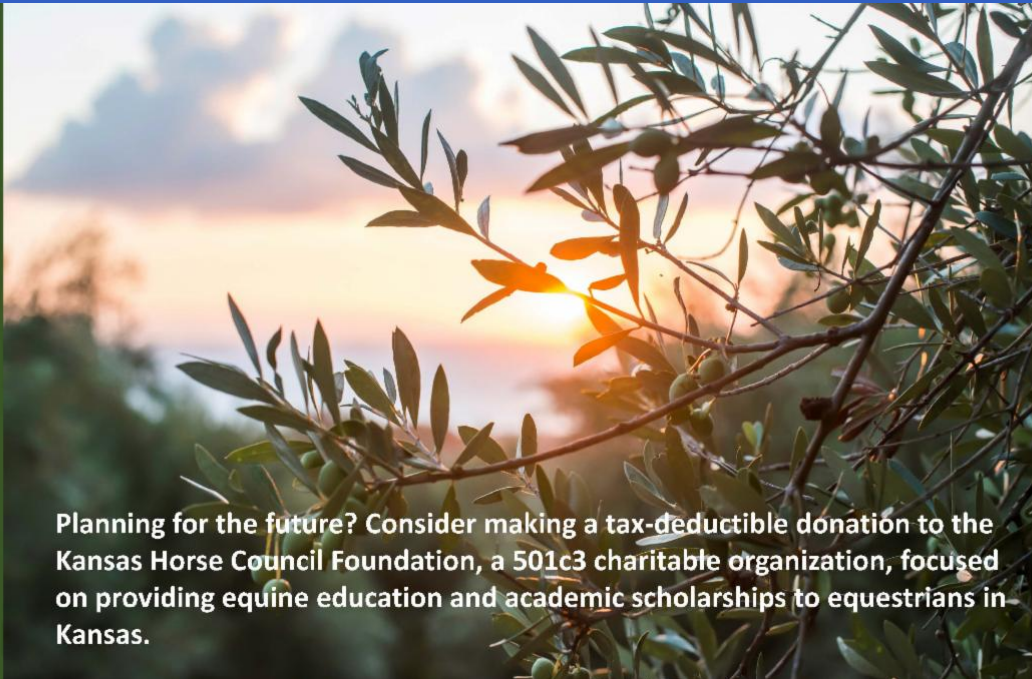
Most will never forget that scene as ole Jay stood on the
stage. They'll recollect each story told as memory turns its
page.

The history in his memoirs need told a thousand times. So,
cowboys, keep on telling tales. The world needs your
rhymes.

What happened in the barn that night upon the makeshift
stage, won't become the new best thing or be the latest

rage.

But, ask someone who heard his voice just how they felt that night. I believe they'd all agree, it made the world seem right.



Planning for the future? Consider making a tax-deductible donation to the Kansas Horse Council Foundation, a 501c3 charitable organization, focused on providing equine education and academic scholarships to equestrians in Kansas.



Shout Out to our friends at Rainbow Meadows. Karen does great work there! Enjoy this sweet FB clip of a recent rehoming. Who doesn't love long ears?!!

<https://fb.watch/lgujNeSol6/>

CAMPAIGN SCHOOL MINI SESSIONS *Register Now*

JULY 18 LAWRENCE
JULY 25 GARDEN CITY
JULY 26 WICHITA



Kansas Farm Bureau to host...

If you're considering running for state legislature, school board, county commission or other public office, KFB's Campaign School Mini Sessions can teach you the nuts and bolts of campaigning and help you execute a winning campaign. The mini sessions are based on the two-day Campaign School, which is nonpartisan, unbiased and has an 80 percent success rate of attendees being elected. The mini sessions are a condensed opportunity to learn the fundamentals of campaign management skills to assist a broad range of locally elected offices. The sessions are only \$50 for Farm Bureau members in Kansas and \$75 for nonmembers.

Attendance is limited to the first 20 registrations at each location.

The sessions will be offered on the following dates and locations:

July 18 2-6 PM in Lawrence

at Baker University Wetlands and Discovery Center
1365 N. 1250 Rd, Lawrence

July 25 1-5 PM in Garden City

Finnup Center for Conservation Education/Lee Richardson Zoo
312 Finnup Dr., Garden City

July 26 1- 5 PM in Wichita

Groover Labs, Inc., South Classroom
334 N St. Francis, Wichita

For full details and to register for your preferred location, click on the button below.

[SIGN UP](#)

Charro Jerry Diaz Family With Andalusian Horses Entertaining At The Volland Store

by Frank Buchman



Internationally acclaimed equestrian performers, Charro Jerry Diaz and family, will entertain at the Volland Store in Alma on Saturday, July 8.

"They entertained here in 2019 and there have been requests for their return," said Jerry and Patty Reece at the Volland Store.

The July 8th program will start with food trucks and mariachi music from Mariachi Estrella KC, opening at 5:30pm and Volland's History, Nature, and Sculpture Trail open for hiking.

Inside the Volland gallery photographs of the Flint Hills from Philip Heying will be on view. His contemplative, graceful approach is just one reason he was awarded a Guggenheim Fellowship in 2022, one of the art world's

most prestigious and coveted prizes.

At 7 pm the event will shift to Volland's horse arena where Charro Jerry Diaz and Family, on their stunning Andalusian horses, will perform equestrian traditions of Mexico, Spain, and Portugal with all the color and romance that entails. Wabaunsee County's own Dawn and Geff Dawson will emcee the event.

Following the horse show, at 8:15pm, a flamenco concert by Ensemble Iberica who recently performed at Carnegie Hall, will perform at the Ruin (Volland's outdoor performance venue) with special guest Melinda Hedgecorth. Ensemble Iberica musicians Beau Bledsoe, John Currey, and Rich Wheeler will showcase guitar, saxophone, and percussion to accompany Melinda.

July 8th will be an especially memorable day at Volland.

Bring your lawn chair and join us for a late afternoon and evening of extraordinary horsemanship, art, music, and dance.

We strongly encourage pre-purchasing tickets through our website, thevollandstore.com.

Please bring cash for the event (or for purchasing tickets at the door).

Tickets for non-Wabaunsee County residents are \$45. Wabaunsee County residents are \$25, and children under 12 are free. A cash bar by donation will be offered.

The Volland Store opened in 1913 at Volland, the railroad depot, and became the cultural center of the ranching community. Today, the former general store has been re-purposed as an event center.

With leadership of the Reece couple, the Volland Store is owned and operated by the Volland Foundation, a 501c3 nonprofit. It serves as an anchor for the activities at Volland in Wabaunsee County. The gallery hosts art exhibitions and community programming. There are outdoor performances at "the Ruin," artist residencies, and guest accommodations. A history, nature, and sculpture trail is open throughout the year from dawn to dusk.

The Volland Foundation receives support from the Kansas Creative Arts Industries Commission and the National Endowment for the Arts. Information is available at www.thevollandstore.com.

BUY TICKETS HERE

Veterinarian Appreciation Day



June 18th was Veterinarian Appreciation Day, but so can ANY day! Ways to show your appreciation include:

- Shout-out some positivity to your vet on social media
- Handmade cards from children or even adults can fill their walls and bring smiles to their hearts
- Take the time to listen--ask how they are, learn what their day is like
- Send photos of your pet with a letter of thanks
- Send a gift package -- many times, vets and their techs don't have much time for a lunch/dinner break. Sending some treats (nutritious and fun) or even purchasing some party subs can make a big difference



Pinto World Championship Ravaged by 100 Mph Winds, Paints Move to Fort Worth

Posted on June 18, 2023 by **QHN Staff**

On the night of June 17, Tulsa, Ok was swept by steady winds of over 100 mph. The Pinto World Championship (PtHA) show has been in full swing at Tulsa Expo Center. The show was slated for June 12-24, 2023 and was forced to cancel before finishing all events.

Debris and winds caused damage to utilities as well as blocking roadways. "Due to the damage, no power, and to insure safe event conditions here at the

Tulsa Expo Square fairgrounds, the Pinto World Championship show will have to cancel the remaining classes,” the Pinto Horse Association of America (PtHA) Facebook page stated.

“We will look at holding the remaining classes at the Color Breed Congress show in November. As we get more information we will keep you updated,” the post continued.

“Stalls need to be vacated by 5 pm on Tuesday, June 20th. The show office will be open from 8 am to 5 pm for immediate assistance,” PtHA said.

Typically many participants of the Pinto World Show leave Tulsa to head straight to Fort Worth, Texas to begin the American Paint Horse Association (APHA) World Show. This year’s APHA World show is slated for June 23 through July 9 at the Will Rogers Memorial Center.

In response to the devastation in Tulsa, the APHA has extended an offer to allow the Pinto entrants to move to Fort Worth early.

“In light of the devastating storms in Tulsa and subsequent cancellation of the Pinto World Championship Show, we have been working together with Will Rogers Memorial Center to allow those affected to move in to the APHA World Show early beginning at 8 a.m. on Tuesday, June 20,” an APHA Facebook post stated.

“In addition, we will waive late fees on entries, stalls and RV reservations with proof of Pinto World Show entry. Due to the tight turnaround between events, we ask that anyone that wishes to move in early or will need additional stalls or RVs, please email aphaevents@apha.com with those details. This will help us be better prepared for your safe arrival,” APHA’s post continued.

The National Reined Cow Horse Association (NRCHA) planned to move into Tulsa Expo Center for the Hackamore Classic, July 24-30. In addition to the Hackamore Classic the NRCHA will be hosting the final The Run For A Million Cow Horse Challenge Qualifier as well as the first ever Non-Pro Worlds Greatest Horseman.



FACTSHEET

EQUINE ALLERGIES

BY STACEY OKE, DVM, MS; REVIEWED BY SAMUEL WHITE, PHD

ALLERGIES AND ALLERGIC DERMATITIS IN HORSES

ALLERGEN AVOIDANCE KEY TO CONTROLLING ALLERGIES, BUT WHAT ELSE CAN HELP?

Like people, horses can develop allergies to pollens/trees/plants, dust components and mites, molds, medications, shampoos, and food.¹ Typical reactions to allergen exposure include severe itching (pruritus) and the development of hives (urticaria). Veterinary intervention, particularly in chronic cases, is directed at controlling the itch, treating the secondary dermatitis and trauma caused by the horse's scratching and rubbing, and discussing allergen avoidance.

WHAT ARE ALLERGIES AND ALLERGIC REACTIONS?

Allergies are a result of the immune system overreacting to certain substances.² When functioning normally, the immune system protects the horse from invading organisms, such as bacteria and viruses. White blood cells such as B and T cells, macrophages, and various inflammatory mediators all work together to identify the invading organism and neutralize/destroy it. A hyperreactive immune system, however, becomes sensitized to nonpathogenic stimuli such as dust, molds, and plant materials, producing very specific antibodies called immunoglobulin E (IgE). When the horse encounters the same allergen again, IgE binds to mast cells, causing the release of histamine and other very potent inflammatory mediators. This spurs the development of clinical signs associated with allergies, primarily urticaria and pruritus.^{3,4}

URTICARIA: A TYPICAL SIGN OF ALLERGIES

The most common sign of allergies in horses is skin and respiratory tract inflammation (the latter being asthma). Only dermatologic manifestations—primarily urticaria—are discussed herein. Urticaria can result from direct contact with or following ingestion, inhalation, and injection of an allergen. While typically non-life-threatening, urticaria does have a “major impact on the animal, owner, and veterinarian.”¹ In addition to affecting the horse's comfort, whether at rest or during riding, competing, and training, chronic urticaria can cause owners compassion fatigue due to the need for ongoing management. Many hives are also pruritic, causing affected horses to rub and scratch themselves, frequently damaging the skin and potentially causing infection.

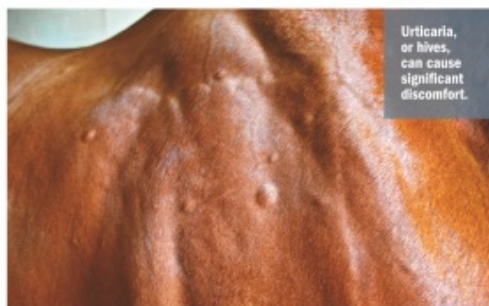
COMMON ALLERGENS

Environmental (Atopic) and Contact

Typical airborne environmental allergens include molds and airborne particulate matter, including bacteria, fungi, pollens, and arthropods, such as mites dust, the horse inhales. Medications such as antibiotics, vaccinations, anti-inflammatory drugs (phenylbutazone, flunixin), and anthelmintics (dewormers) can result in allergic reactions. Chemicals or products that come in contact with the skin, such as shampoos or insect repellents, can also cause contact dermatitis and allergic reactions.⁴

Insect Bite Hypersensitivity (IBH, Sweet Itch)

Insect bites, specifically those from biting midges called *Culicoides* spp. can cause eczematous lesions with scales, crusts, thickened skin,



Urticaria, or hives, can cause significant discomfort.

THE HORSE STAFF

and damaged dermis from scratching (this is a highly pruritic condition). The prevalence of IBH is 30-60% globally, and presentation is typically seasonal, depending on the geographical distribution and life cycle of the biting midge. This is the most common cause of allergies in horses.¹

Food Allergies

Compared to environmental allergies, food allergies reportedly occur less commonly in horses (unlike other species such as dogs and humans). A recent yet somewhat heated dermatologic debate was published in the journal *Veterinary Dermatology* exploring the role of food allergies in the development of urticaria in racehorses. Two studies published in French journals suggested urticaria occurred commonly in racehorses (82% of 22 horses studied). The horses were unresponsive to glucocorticoids, a mainstay in allergy management, and intradermal testing (IDT) with various food-derived allergens suggested the potential role of concentrated feeds in chronic urticaria.^{5,6}

In response, however, another group of experts wrote, “There is a notable paucity of well-defined cases of food allergy in the peer-reviewed literature.” Those veterinarians suggested the reactions could have been due to the dust, molds, and forage mites associated with the feeds, rather than the feed itself. Further, IDT is not well-standardized in horses. Finally, changing feeds to alleviate “food allergies” might simply have changed the environmental allergies (dust, molds, forage mites) rather than resolving food allergies.

Common food items blamed for causing adverse reactions include vitamins and minerals, hays/pasture, and supplements.^{1,2}

Others

Researchers and veterinarians have reported a wide variety of additional, and likely surprising, causes of urticaria. These include temperature changes (cold packing, hot shower), skin pressure, exercise, sun exposure, internal and external parasites, and even psychogenic stress (e.g., introduction of a new herdmate, trailering).¹ While the underlying cause of stress in the development of allergies remains undetermined, some experts believe stress can negatively affect the intestinal microbiome, resulting in leaky gut syndrome. The clinical manifestation for leaky gut is allergy-type reactions such as hives.⁷ Often, the underlying cause of urticaria is never identified, making management and allergen avoidance difficult.¹

READ MORE HERE





ALERT ALERT

Why does this matter? This extremist group, BHCD, is targeting one of our Friends of EquiFest of KS!

Northstar Carriages, participates at EquiFest each year. These draft horses LOVE to work. Northstar staff CARES for their horses. They are a great ambassador of horse activities, giving many people that first time horse experience with a quality service.

"May 5: BHCD urges city council members in Dallas to ban horse-drawn carriage rides"

The local activist group Ban Horse Carriages Dallas (BHCD) has recently been observed active in its campaigning against the continued use of horse-drawn carriages throughout the city for human transport/entertainment. As part of the group's recent efforts, supporters have been found calling on local city council members pressuring them to introduce and support an official ban on the practice.

This included the Facebook user "Gloria Raquel Carbajal" releasing a post on April 15, claiming "Today two

#BanHorseCarriagesDallas (BHCD) volunteers had the opportunity to meet two City council members running for reelection - Jesse Moreno of District 2 and Paula Blackmon of District 9. They are noticing /taking note of our passion and determination/in our tweets/emails/phone calls/ social media communications. Please continue applying the pressure. We are all very hopeful and motivated. Together we will get this done (and move on to another city)."

As part of the ongoing campaign the group had also planned a protest for the cause at the Klyde Warren Park in Dallas on Saturday June 24th.

NOTE: This extremist group, "BHCD", moved into Dallas for this single mission-to destroy a business. It uses videos from out of country activities mixed with local clips of carriages to stir emotions.



First Aid Kit - Horses

- Information
 - Veterinarian's name and phone number
 - Cell phone handy
 - Directions to your location/address
 - Horse information/medical history (vaccines, dewormers)
- Physical exam/parameters
 - Stethoscope
 - Heart rate normal-at rest: 30-45 beats per minute
 - Respiration rate normal-at rest: 8-16 breathes per minute
 - Intestinal sounds: should be present
 - Rectal thermometer
 - Temperature: 99.5 – 101.5° F
 - Other vitals
 - Mucus membranes (gums): pink and moist
 - Capillary refill time (push gums): less than 2 sec. turn back pink
- Bandage material (properly applied!)
 - Gauze sponges, Brown gauze wrap
 - Telfa/non-stick pads
 - Roll cotton/diapers
 - Leg wraps
 - Self adhesive (vet wrap)
 - polo leg wraps
 - Water soluble antibiotic ointments (Furacin, SSD , or Triple antibiotic etc...)
 - Magna Paste (poultice for swelling-don't apply on open wound/abrasion)
 - Adhesive tape (zonas, Duct tape, Elasticon)
 - Bandage scissors
 - Exam gloves
 - Clippers and sterile wound lube
- Scrub material
 - Betadine or Chlorhexadine Scrub and Solution
 - Scrub bucket/clean trash bag (as liner): for clean water initial scrub
 - Roll cotton (in bandage material) for scrubbing
 - Bottle sterile saline (rinse wound area): for final water to clean
 - 35 cc syringe (aid in flushing area clean)
- Other equipment
 - Flashlight
 - Sharp knife/wire cutters/pliers
 - Hemostats
- Medications as directed by your veterinarian
 - Banamine paste
 - Bute paste



June 2023

Equine Emergency Preparedness: Developing an Effective Equine Emergency Plan

By Dr. Bethany Roof, Equine Internal Medicine Intern

Equine emergencies can arise suddenly and unexpectedly, presenting unique challenges and potential risks to both horses and their caretakers. From injuries and colic episodes to natural disasters and transportation accidents, the need for a well-thought-out equine emergency plan cannot be overstated. An equine emergency plan is a comprehensive and proactive strategy designed to mitigate the impact of emergencies, protect the welfare of horses, and ensure the safety of

everyone involved in their care.

By understanding the critical elements of emergency preparedness and response, horse owners, facilities managers, and equine professionals can effectively safeguard the health and well-being of their horses during unexpected events. This document discusses the creation of an emergency contact list, identification of potential emergencies, necessary equipment and supplies for an equine first aid kit, and basic first aid techniques for common emergencies. This information is intended to assist with planning at the individual or stable/farm level. Planning for emergencies will depend on a variety of factors, but it is important for equine enthusiasts that manage horses to identify what risks and potential threats exist for appropriate planning and intended favorable outcome(s).

[READ MORE HERE](#)

Lake Access Keeping Economies Strong ACT

Senator Kevin Cramer — Senator Martin Heinrich

The LAKES Act expands opportunities to improve and develop outdoor recreation facilities at U.S. Army Corps of Engineers managed areas.

Outdoor recreation is
a vital economic driver
in local economies
across the U.S.

1.9%
of U.S. GDP
\$454B
in gross economic output

U.S. Army Corps of Engineers
assets are one of the
nation's largest federal
outdoor recreation providers

257,000
facilities
43
states

Retention of Recreation Fees:

Under current law, local units of federal land management agencies at the Departments of Interior and Agriculture can retain 80% of recreation fees collected on site. These funds are then dedicated to the site's operation and maintenance needs without approval from headquarters, allowing them to be nimbler and more responsive with their planning decisions. Currently, USACE recreation facilities are excluded from this benefit.

The LAKES Act rectifies this discrepancy by enabling recreation sites and facilities under the jurisdiction of USACE to retain 80% of recreation fees collected at a particular location for its operation and maintenance.

This funding would supplement annual appropriated funding, while the other 20% of collected fees would be available for operations and management at any Army Corps recreation facility. This authority provides for more expedient reinvestment of recreation fees by USACE in local recreation infrastructure.

Joint Recreation Management:

- The LAKES Act amends Challenge Cost Sharing Cooperative Management Agreement authority, enabling private nonprofit entities to enter into cooperative agreements with USACE to operate and maintain recreation facilities under USACE jurisdiction.
- The LAKES Act will foster agreements between nonprofits and the USACE, as well as affirm the authority of the USACE to enter into cooperative joint management agreements with Tribes.
- The LAKES Act fixes issues with the USACE's inability to collect and send funds to partners under existing CCSMA authority using the Recreation.gov system. This issue has deterred partners interested in cooperatively managing parks with USACE. The LAKES Act would allow USACE to handle partner-collected fees and return them to the partner after processing.



Horses feed
your soul...



Chef Alli's Strawberry Cream Cheese Galette

Here is what you will need:

- Canned strawberry pie filling (may substitute any pie filling you prefer)
- Cream cheese
- Egg yolk

- Sugar
- Vanilla
- Refrigerated pie crust (that comes in roll)

Instructions:

1. Preheat oven to 400 degrees
2. In a large mixing bowl, using an electric mixer, beat the softened cream cheese and sugar together; add the egg yolk and vanilla, beating until well incorporated and the filling is smooth.
3. Remove the roll of pie crust dough from refrigeration and unwrap; open the can of pie filling. Place a sheet of parchment paper onto your work surface. Using your favorite rolling pin, roll the pie crust dough out over the parchment paper, until it's about 11-12 inches in circumference. Don't worry if it's not perfectly round in shape.
4. Grab one side of the parchment paper and slide the pie crust onto a large, rimmed baking sheet (13×18 inches in size). Spread the prepared cream cheese filling over the pie crust, leaving about an inch edge all the way around. (This is to make the pinched edge.)
5. Gently fold the pie dough up and over the filling, forming the edge. The center of the crostata will be open to show the pretty strawberry pie filling.
6. Bake the crostata or galette, uncovered, on the center oven rack for 35-40 minutes or until the crust on the top and bottom is nicely golden brown. Remove to a cooling rack and cool completely so the cheesecake filling can set.
7. Cool and slice like a pie. Serve with whipped topping or ice cream.
8. Enjoy!

Kansas Horse Council Specialty License Plate

- Kansas Horse Council license plates are available at your local County Treasurer's office.
- You don't have to be a member to sport one, on your car, truck or trailer!
- Show your love of horses with this colorful statement plate!

KHC License Plate Info



**ENJOY THE RIDE
WITH KHC!!**

**GET A
KANSAS
HORSE
COUNCIL
TAG**

PROUDLY SHOW
YOUR SUPPORT
FOR KHC AND
THE WORK IT DOES.

**KANSAS
HORSE
COUNCIL
PLATES**

are available to
anyone who owns or
leases an automobile,
RV, truck or trailer
with a gross weight of
20,000 pounds or less.

HOW TO GET YOURS:

TROT over to your County
Treasurers Office

FILL OUT a Kansas Royalty
Tag form

PAY a one time production charge of \$50.00 plus
title fees, registration fees, personal property tax
and a \$30 donation to the Kansas Horse Council.
The \$30 tax deductible donation will appear on
your paperwork every year when you renew! If the
vehicle is currently tagged, the original plate must
be returned and the current owner's registration
and proof of insurance will need to be provided.



**WHAT YOUR TAX
DEDUCTION SUPPORTS**

YOUTH
ACTIVITIES AND
SCHOLARSHIPS

EDUCATION
PROGRAMS

EQUINE
HEALTH
AND
WELFARE

RECREATIONAL
AND TRAIL
MAINTENANCE

**Kansas
Horse
Council**
www.kansashorsecouncil.com



Giving a shoutout to these participants and the hours they've logged
enjoying time with their equine friends!

Q1 2023

500 Hours - Delana Dee Crist
500 Hours - Emily Neises

Q2 Coming Soon!



INTERSCHOLASTIC
EQUESTRIAN
ASSOCIATION

GET A
JUMP
ON THE **2023-2024**
IEA SHOW SEASON

IEA™ Join Now! Competitions begin August 1st.

**Attention Kansas lesson barns, you too
could become an (IEA) Interscholastic
Equestrian Association facility and
partake in shows & awards!
Checkout their Facebook page and
website, www.rideiea.org**

HOW MUCH TOTAL
\$SCHOLAR\$HIP
MONEY ARE WE AWARDING AT
THE 2023 IEA NATIONAL FINALS?

\$1,153,550

Joint membership with KHC & BCH-KS for you!



Kansas Chapter



KansasHorseCouncil.com



JOINT MEMBERSHIP AVAILABLE IN BOTH ORGANIZATIONS!

Individual: \$80 (\$15 to BCHA/\$15 to BCH-KS/\$15 to KS Chapter of Choice/\$20 for insurance/\$15 to KHC)
Family: \$100 (\$15 to BCHA/\$15 to BCH-KS/\$15 to KS Chapter of Choice/\$40 for insurance/\$15 to KHC)

Trails Advocate Level Individual: \$80

Trails Advocate Level Family: \$100

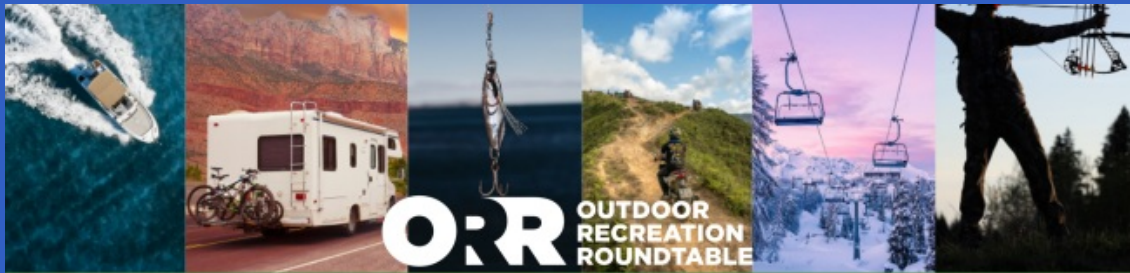
One enrollment to support two organizations!
Simple and makes sense!



Horses are highly intuitive to nonverbal messages and intentions. Through this, we receive unbiased feedback and our stories transform in a safe and powerful way. Due to their size and presence, horses create a sense of awe, leading to increased emotional safety and engagement in the treatment process.

Because horses can provide a safe and dynamic environment, peace and healing can happen through relationships facilitated by trained professionals.

incorporating horses for mental health and personal growth programs. Visit <https://horsesformentalhealth.org/stories/> to hear stories from Randy Travis, Tanya Tucker, and many others about horses in their lives. Visit horsesformentalhealth.org/campaign to choose a nonprofit and make a donation today!



America's Outdoor Recreation Act

AORA is a bipartisan recreation package that will help get people outdoors by modernizing federal systems and eliminating barriers **at no cost to taxpayers. This first-of-its-kind legislation is the result of decades of work by stakeholders and Congress.**

This transformative bill:

- Breaks down government silos to address pressing recreation challenges and opportunities
- Expands parking at highly-visited destinations
- Unifies and makes data collection consistent
- Allows for selling passes and collecting fees online
- Modernizes film and photo permitting
- Creates more transparency in processes
- Provides flexibility in cross-agency trips
- Updates infrastructure
- Improves resources for hunters and anglers
- Supports youth and veterans
- Builds sustainable local economies



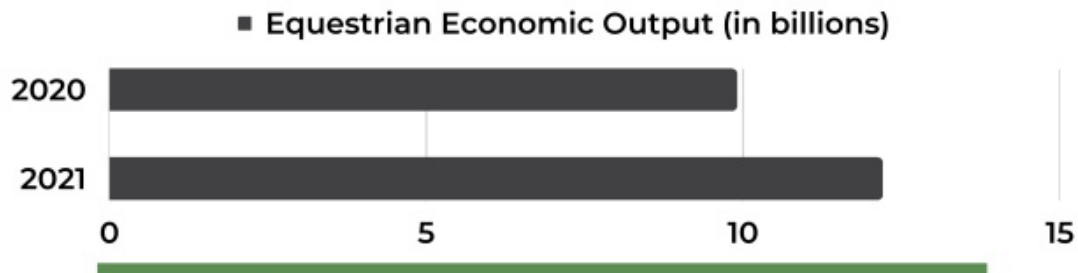
Why is AORA good for horseback riding in addition to the above?



- Protects horseback riding access on new long-distance trails
- Directs agencies to identify areas to expand recreational usage
- Informs the public of access closures
- Extends shoulder seasons for more and better managed visitation and increased riding opportunities
- Helps bring broadband and WiFi to frontcountry sites

Horseback riding **generates:**

\$12.2 billion nationwide annually



ORR is the leading coalition of outdoor recreation trade associations serving more than 110,000 businesses, educational institutions, state Offices of Outdoor Recreation, and more.

For more information, visit
www.recreationroundtable.org

 @ORRoundtable

ORR OUTDOOR
RECREATION
ROUNDTABLE



BACK COUNTRY HORSEMEN OF KANSAS

What's the best way to stay informed of BCHKansas news and activities?

Follow Facebook.

There are several Facebook pages set up to keep BCHKansas members and all equestrians up-to-date on activities on several of our public trails. Here's a list:

Back Country Horsemen of America Kansas Chapter
Sunflower Chapter of Back Country Horsemen of Kansas
Saddle Ridge Chapter of Back Country Horsemen of Kansas
Tuttle Creek Chapter of Back Country Horsemen of Kansas
Saddle Ridge Chapter
Big Hill Lake Riders
Friends of Randolph State Park
Friends of Rockhaven Park
Let's Ride—Perry Lake
Kanza Rail Trails Conservancy

Receive notifications of workdays or see reports on trails-maintenance or campground improvements. Join in on workdays whenever possible!

Follow the www.bchkansas.com website.

Encourage a new member to join BCHKS and be entered into an end-of-year drawing.



Kansas Horse Council Rewards Programs



DILLONS COMMUNITY REWARDS PROGRAM:

- When you shop at Dillons and use your Rewards card, KHC will earn a percentage rebate based on your Dillon's purchases!

To link & register your rewards card click here: [Dillons Rewards Link](#) and log into your existing account. Search for Kansas Horse Council or enter our NPO number, KS920 and click Enroll. New users will need to create an account which requires some basic information, a valid email address and a *Rewards Card. *You must have a registered Dillons Food Stores rewards card account to link the Community Rewards program to Kansas Horse Council. (Cards are available for FREE at any Dillon's customer service desk.) SHOP: Purchases will not count towards rebates for KHC until you register your rewards card and link to Kansas Horse Council here: [DILLONS REWARDS LINK](#) Registered Rewards Cards must

be swiped at checkout or use your phone number registered with your Rewards Card when shopping for purchases to count. This program does not affect your Fuel Points balance. Points will still accumulate for your personal use. Rebate program is based on purchases at Dillon's stores payable to Kansas Horse Council as a Non-Profit Organization. Thank you for your continued support to the voice of equine enthusiasts in Kansas!

EQUINE U DISCOUNTS

A percentage of every sale is returned to the equine industry!

As a member of KHC, you are eligible for these discounts.



JOHN DEERE

John Deere offers substantial discounts on everything from mowers and tractors to Gator™ Utility Vehicles, hay and construction equipment.

- The MSRP Program: up to 28% off
- The Cash Bonus Program: up to \$2,700 off
- Construction Equipment: up to 26% off



BIG ASS FANS

BAF is committed to Energy Efficient Air movement and providing comfort to the equine industry. Equine members will receive up to a 25% discount on qualifying purchases for all Equine Facilities and Personal Residences.



By establishing a Sherwin-Williams account, members are eligible for these great benefits:

- 35% off paints at list price
- 30% off brushes, rollers and associated products at list price



ODP Business Solutions™ (formerly Office Depot) and Equine Discounts have partnered to provide exclusive benefits and savings on a wide selection of office products and services.



@myequinediscounts

@myequinediscounts

Call 866-982-6872 to start saving!
EquineDiscounts.com



June Funny

When does a horse talk?
Whinny wants to.



IT'S TIME TO JOIN UP **EARN REWARDS**

WANTED ALL EQUINE LOVERS

THE **KANSAS HORSE COUNCIL** PRESENTS **HORSEMANSHIP REWARDS PROGRAM**

Earn rewards while working with your favorite equine friends!
This program is open to anyone who enjoys working with horses, minis, donkeys, ponies, or mules, including "grade" equines.

This program recognizes participation in Equine Activities such as riding, schooling, competing, showing, training, ground work, driving, exercising, and assisting in a Therapy Program or Rescue. The program does not include feeding, stall cleaning and maintenance.

PROGRAM RULES & REQUIREMENTS:

- Must be a current KHC Member.
- Must pay a \$35.00 initial program enrollment fee the first year and then a \$15.00 annual program fee thereafter.
- May ride or handle more than one horse and it is not necessary to be the owner of the horse.
- Hourly log sheets may be submitted monthly, quarterly or annually. Annual submissions must be postmarked no later than December 31st.
- The KHC Member participant will need an individual membership to track member rewards by name.
- Rewards points are not retroactive. Date of log begins on enrollment date.
- Rewards are subject to change based on availability.

Awards are given at 25, 50, 100, 250, 500, 1000, 1500 & 2000 hour milestones. Upon 2000 hours completed, members are welcome to re-enroll and start again!

FOR MORE INFORMATION CONTACT:
KANSAS HORSE COUNCIL, 8831 QUAIL LANE, SUITE 201, MANHATTAN, KS 66502
www.kansashorsecouncil.com | 785-776-0802 | Fax 785-539-2528 | director@kansashorsecouncil.com

Saddle up with
Kansas Horse
Council
Horsemanship
Rewards
members only
program! Earn
prizes for
spending time
with horses!

Be sure to renew your KHC membership for
2023 and pay your HRP renewal fee- \$15, to
rollover your hours into the New Year!

Logs are submitted quarterly.
Saddle up, ride and earn rewards...it's a
great way to start a NEW year!

For more details visit:

[Horsemanship Rewards Info](#)

Thanks to our [Friends of KHC Sponsors](#) below for
their support of the HRP program!

KHC would like to thank you for sponsoring our HRP program!



Shawnee Woodwork
Inc



FEED GREATNESS®

VALLEYVET.COM



Learn About Kansas Horse Trails! RIDE Kansas!

Saddle Up and RIDE Kansas! Visit our Kansas Department of Wildlife and U.S. Corps. of Engineers equestrian facilities. Visiting and riding or camping shows support of our parks, and keeps them open for future use and possible funding of improvements. Always leave only hoofprints behind. Share our multi-use trails. Call before you haul if in doubt before your visit.

KDWP State Parks info.



Do you have your copy

of our Equestrian Trails in Kansas?

Copies are provided FREE at all Kansas Horse Council events, or \$3 for s/h and we'll mail you one.

These guides are also available at all KDWP offices.

Trail info is also available online here:

[Public Trails in Kansas](#)

Stay tuned for our updated trail book this spring!



Kansas equestrians deserve a big pat on the back for another impressive year of volunteer work on public trails! Our public land managers and other trail organizations continue to be impressed by the dedication of equestrians to taking care of the trails we love to ride.

BCHKS volunteers reported the following for 2021 - 3,783 hours, with a value of \$259,326 in labor and supplies.

Since BCHKS started keeping track in 2014, equestrian volunteers in Kansas have contributed - 23,000 hours, with a value of \$1,250,943 in labor and supplies!

We do make a difference!



JOIN OR RENEW FOR 2023!



www.kansashorsecouncil.com

Kansas Horse Council | 8831 Quail Lane, Suite 201, Manhattan, KS 66502

Unsubscribe_director@kansashorsecouncil.com

[Update Profile](#) | [Constant Contact Data Notice](#)

Sent by director@kansashorsecouncil.com powered by



Try email marketing for free today!