

***KANSAS HORSE COUNCIL NEWSLETTER.
NEWS FOR KANSAS AND THE EQUINE INDUSTRY.***

June 2024 EDITION

**News, announcements and events from around Kansas,
regarding the Kansas equine industry.**

**Legislation, Insurance, Equipment & Retail discounts are just
some of our membership benefits! Visit our website to learn
more.**

Join our herd!



Visit Our
Website!



**JOIN
NOW**



2024

WWW.KANSASHORSECOUNCIL.COM

2024 Upcoming Events and Calendar

This month there are shows, rodeos, trail rides, and more!

See them here:

Calendar of Submitted Events

Any questions regarding events, please call us at

785-776-0662

If interested in more information or to register for an event, please email us
at

director@kansashorsecouncil.com

NEW MEMBERSHIP FORM ONLINE

MEMBERSHIP OPTIONS

MEMBERSHIP OPTIONS

Join Now

MEMBERSHIP LEVELS

- ☐ Joint Individual Membership- BCH- KS/ KHC \$80.00
- ☐ Joint Family Membership- BCH- KS/ KHC \$100.00
- ☐ Student Membership- Kansas Horse Council \$35.00
- ☐ Individual Membership- Kansas Horse Council \$50.00
- ☐ Family Membership- Kansas Horse Council \$80.00
- ☐ Club Membership- Kansas Horse Council \$35.00
- ☐ Business/Organizational Membership- Kansas Horse Council \$100.00
- ☐ Individual with Back Country Horsemen of KS \$45.00
- ☐ Family with Back Country Horsemen of Kansas \$50.00
- ☐ Business/Affiliate Org with Back Country Horsemen of KS \$50.00

☒ I would like to automatically renew my membership

MEMBERSHIPS

MEMBERSHIP LEVELS

Log in to your existing account

Login Name:

Password:

Log In

Forgot your password?

Enter the e-mail address associated with your account and we'll send you a link to recover your login information.

Email:

Recover Account

NEW for 2024 and beyond!

When you set up an account and you are logged in, any purchases you make are listed in your personal account, so you can always see your transactions and you'll always have your member number handy.

HRP, Lifetime Insurance, Signs and Guides are in the "store" options, just under the Membership options page.

We hope you like the changes. We'll still be able to take memberships over the phone or check by mail...this online provides convenience and an auto-renewal option if you'd like!

Feel free to email or call if you have any questions.
director@kansashorsecouncil.com, 785-776-0662

*You're
Invited!*

July 25, 2024
2:30pm to 4:00pm
in person & Zoom



EQUINE
Hybrid SECTOR SESSION
2024

Kansas AGSUMMIT
GROW SMARTER. GROW STRONGER. GROW KANSAS.

Agenda & Details coming soon



[2023 Equine Sector Session Recording Link](#)



SAVE THE DATE

Kansas
2024 AG SUMMIT
GROW SMARTER. GROW STRONGER. GROW KANSAS.



2024 Kansas Governor's Summit on Agricultural Growth
WEDNESDAY, AUGUST 21, 2024

Kansas State University Alumni Center | Manhattan, Kansas

Come early
and join us for
the social event!
AUGUST 20

This event is FREE, although we request that you register online. Registration will open at a later date.

A social event will be held the evening of Tuesday, August 20, also at the Alumni Center. Details will be posted on our website as they become available.


agriculture.ks.gov/GrowAg

SAVE the DATES

KANSAS
LIVESTOCK
ASSOCIATION

K-STATE
Research and Extension

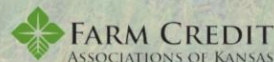
 **August 15**
Wabaunsee Co. | Downey Ranch

 **August 22**
Gove Co. | Hoeme Ranch & Cattle

2024 Ranch Management Field Days



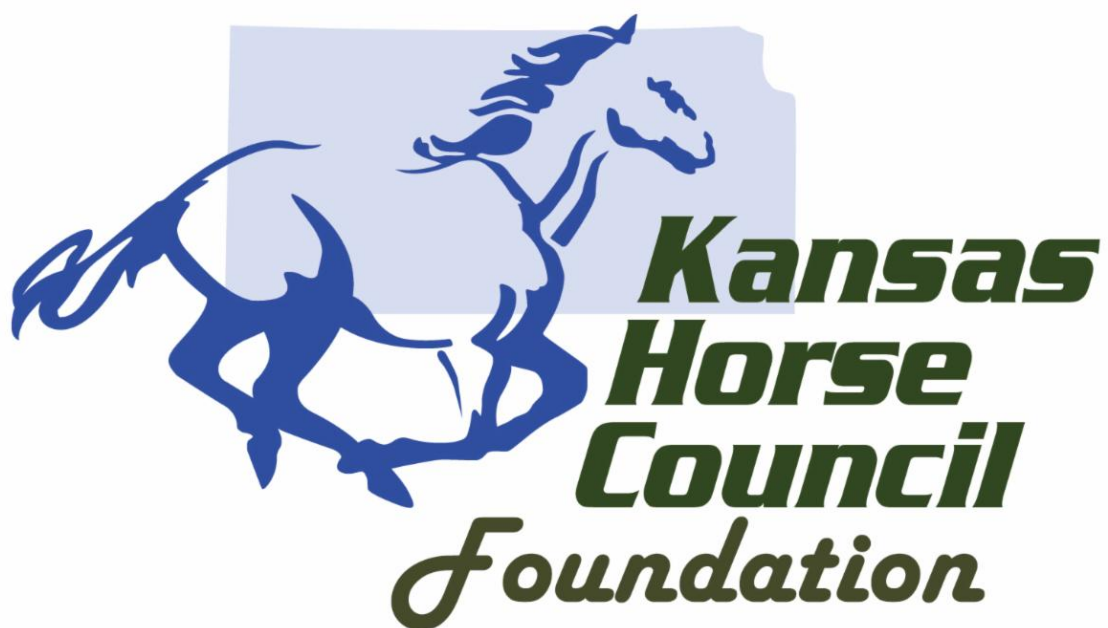
Thanks to our sponsors!



SAVE THE DATES!
2024 KLA/KSU Ranch Management Field Days
More info to follow!



Planning for the future?
Consider a tax deductible donation to
the Kansas Horse Council Foundation, a 501c3 charitable
organization, promoting equine education and providing academic
scholarships to equestrians.





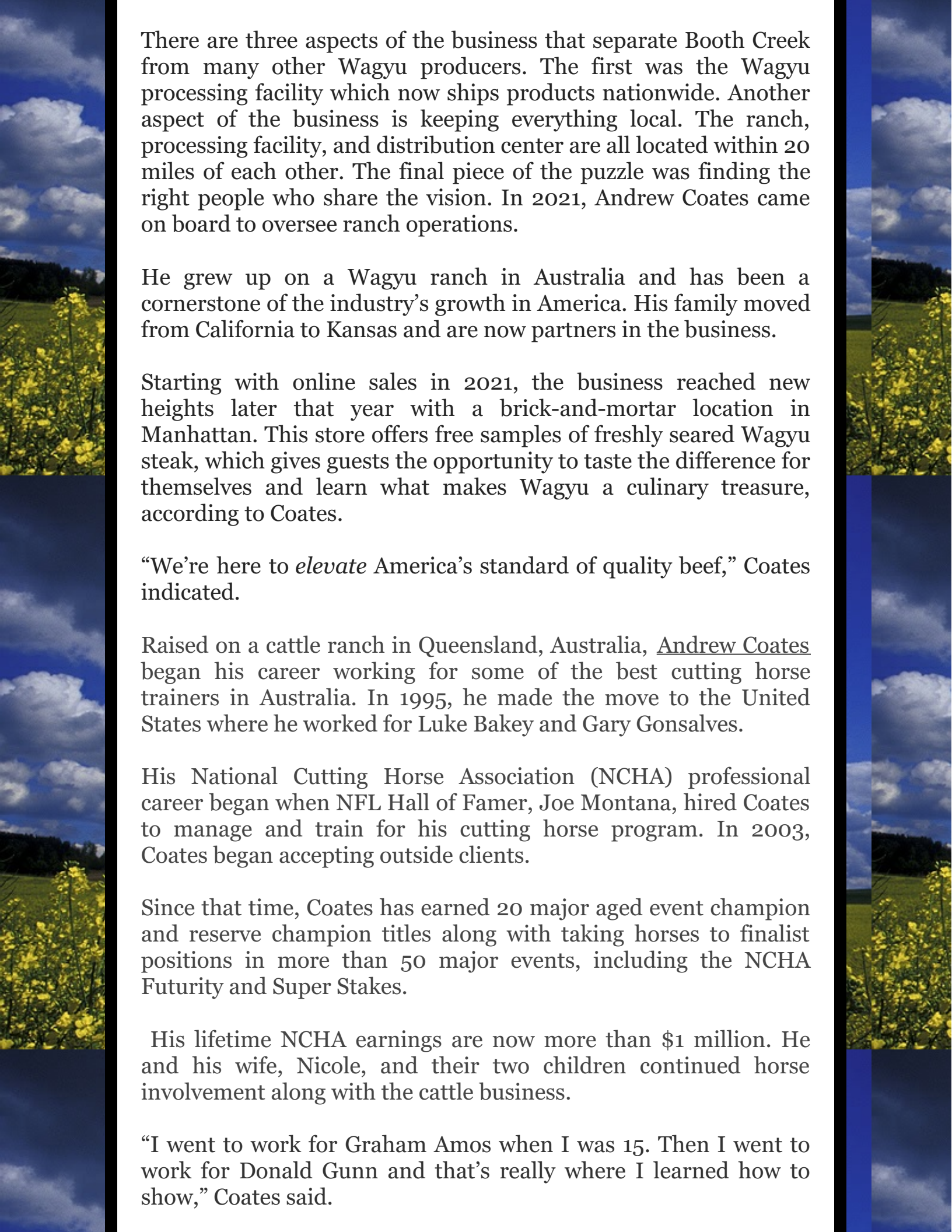
Kansas Horse Council Presents Scholarships With Career Inspiration from Leading Trainer

Grilled Wagyu burgers kicked off the Kansas Horse Council Scholarship presentations featuring a diverse program. At the Sedalia Community Church north of Manhattan, Andrew Coates discussed his career as a leading cutting horse trainer before ten scholarships were given to young people looking to careers with horses.

Appropriate to review the Booth Creek Wagyu Ranch which supplied the banquet burgers. Located north of Manhattan near Olsburg, our ranch was originally developed for world-class whitetail deer hunting, according to Andrew Coates, the ranch manager.

Despite what most people think about the state's geography, the Booth Creek ranch is anything but flat. "It features deep, wooded creek draws, surrounded by rolling hills of lush tallgrass prairie, making it the perfect place to raise our special herd," Coates informed on the ranch website.

The business began in 2020 when Dave Dreiling, attended his first Wagyu auction. He started studying the Wagyu industry in America and saw opportunities to improve it through efficiency, education, and a more practical business approach.



There are three aspects of the business that separate Booth Creek from many other Wagyu producers. The first was the Wagyu processing facility which now ships products nationwide. Another aspect of the business is keeping everything local. The ranch, processing facility, and distribution center are all located within 20 miles of each other. The final piece of the puzzle was finding the right people who share the vision. In 2021, Andrew Coates came on board to oversee ranch operations.

He grew up on a Wagyu ranch in Australia and has been a cornerstone of the industry's growth in America. His family moved from California to Kansas and are now partners in the business.

Starting with online sales in 2021, the business reached new heights later that year with a brick-and-mortar location in Manhattan. This store offers free samples of freshly seared Wagyu steak, which gives guests the opportunity to taste the difference for themselves and learn what makes Wagyu a culinary treasure, according to Coates.

"We're here to *elevate* America's standard of quality beef," Coates indicated.

Raised on a cattle ranch in Queensland, Australia, Andrew Coates began his career working for some of the best cutting horse trainers in Australia. In 1995, he made the move to the United States where he worked for Luke Bakey and Gary Gonsalves.

His National Cutting Horse Association (NCHA) professional career began when NFL Hall of Famer, Joe Montana, hired Coates to manage and train for his cutting horse program. In 2003, Coates began accepting outside clients.

Since that time, Coates has earned 20 major aged event champion and reserve champion titles along with taking horses to finalist positions in more than 50 major events, including the NCHA Futurity and Super Stakes.

His lifetime NCHA earnings are now more than \$1 million. He and his wife, Nicole, and their two children continued horse involvement along with the cattle business.

"I went to work for Graham Amos when I was 15. Then I went to work for Donald Gunn and that's really where I learned how to show," Coates said.



He came to the states in 1995 before training for Joe Montana for four years.

“The biggest mistake I’ve made is getting too focused on horse training and losing sight of being a good horseman,” Coates admitted. “The biggest myth in cutting is that it’s easy. It may be simple, but it is not easy,” he emphasized.

Coates’ most memorable moment in cutting was the first time he made the Futurity finals on Sues Barn Cat. “Try to train every horse to the best of its ability but being aware of its limitations,” Coates said.

His favorite quote and what he considers the best advice came from his employer Joe Montana. “If you’re afraid to lose you can never be a winner.”

His biggest showring achievements include NCHA major aged event finalist five times, multiple Pacific Coast championships, 2018 Cascades Derby Champion; 2017 El Rancho Futurity Champion; 2017 Idaho Futurity Champion; 2005 Pacific Coast Gelding Stakes Champion; and 2005 Breeders Invitational five- and six-year-old Champion.

Coates considers the top three horses he’s trained to include Sues Barn Cat, Im Catman, and Lizzys Got Style.

Recipients of scholarships from the Kansas Horse Council Foundation (KHCF) as presented by executive director Justine Staten with assistance from KHC member Joyce Troyer include: Chelsei Brown, Logan, daughter of Steve and Tara Brown, majoring in horse production and management at Colby Community College.

Caitlyn Champagne, Lawrence, daughter of Chris and Carolyn Champagne, majoring in kinesiology, Spanish, and physiology at Kansas State University.

Courtney Clinesmith, Cimarron, daughter of Bill and Stephanie Clinesmith, majoring in agricultural economics business at Kansas State University.

Cash Fuesz, Eureka, son of Cory and Heather Fuesz, majoring in organizational leadership at Weatherford College.

Raleigh Holcomb, Ford, daughter of Cody Holcomb and Jessica Stout, majoring in horse production and management at Colby Community College.

Chancy Johnson, White City, daughter of Chad and Janon Johnson, majoring in agribusiness and marketing at Kansas State University.

Kelli Kychlik, Topeka, daughter of Corey and Michelle Kychlik, majoring in nursing at Kansas State University.

Alyssa Leslie, Inman, daughter of Garrett Leslie and Toni Woodson, majoring in veterinary medicine at Kansas State University.

Kirsten Miessler, Seward, daughter of Ron and Heather Miessler, majoring in elementary education at Wichita State University.

Alexis Studebaker, Harveyville, daughter of David and Jamie Studebaker, majoring in agriculture and communications at Kansas State University.

+++30+++

CUTLINES

Present to receive their Kansas Horse Council Foundation Scholarships were Alexis Studebaker, Harveyville; Alyssa Leslie, Inman; and Chancy Johnson, White City.

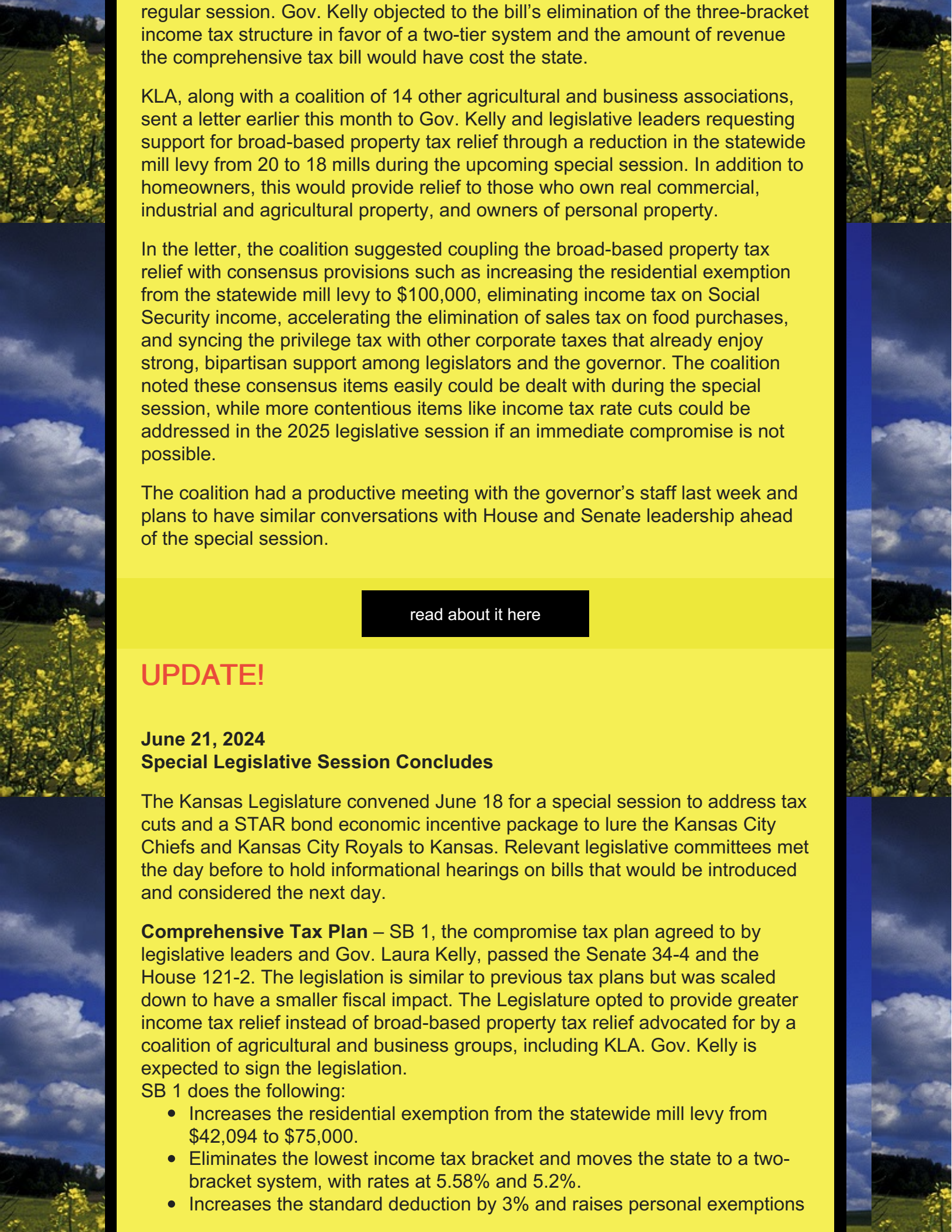


KLA
Today

June 3, 2024

Governor Calls Special Session To Address Tax Cuts

Last week Gov. Laura Kelly called for a special session of the Kansas Legislature, set to meet June 18. The governor's primary purpose in bringing back the Legislature is to address tax cuts after she vetoed the last comprehensive tax proposal passed by the Legislature at the end of the



regular session. Gov. Kelly objected to the bill's elimination of the three-bracket income tax structure in favor of a two-tier system and the amount of revenue the comprehensive tax bill would have cost the state.

KLA, along with a coalition of 14 other agricultural and business associations, sent a letter earlier this month to Gov. Kelly and legislative leaders requesting support for broad-based property tax relief through a reduction in the statewide mill levy from 20 to 18 mills during the upcoming special session. In addition to homeowners, this would provide relief to those who own real commercial, industrial and agricultural property, and owners of personal property.

In the letter, the coalition suggested coupling the broad-based property tax relief with consensus provisions such as increasing the residential exemption from the statewide mill levy to \$100,000, eliminating income tax on Social Security income, accelerating the elimination of sales tax on food purchases, and syncing the privilege tax with other corporate taxes that already enjoy strong, bipartisan support among legislators and the governor. The coalition noted these consensus items easily could be dealt with during the special session, while more contentious items like income tax rate cuts could be addressed in the 2025 legislative session if an immediate compromise is not possible.

The coalition had a productive meeting with the governor's staff last week and plans to have similar conversations with House and Senate leadership ahead of the special session.

[read about it here](#)

UPDATE!

June 21, 2024 Special Legislative Session Concludes

The Kansas Legislature convened June 18 for a special session to address tax cuts and a STAR bond economic incentive package to lure the Kansas City Chiefs and Kansas City Royals to Kansas. Relevant legislative committees met the day before to hold informational hearings on bills that would be introduced and considered the next day.

Comprehensive Tax Plan – SB 1, the compromise tax plan agreed to by legislative leaders and Gov. Laura Kelly, passed the Senate 34-4 and the House 121-2. The legislation is similar to previous tax plans but was scaled down to have a smaller fiscal impact. The Legislature opted to provide greater income tax relief instead of broad-based property tax relief advocated for by a coalition of agricultural and business groups, including KLA. Gov. Kelly is expected to sign the legislation.

SB 1 does the following:

- Increases the residential exemption from the statewide mill levy from \$42,094 to \$75,000.
- Eliminates the lowest income tax bracket and moves the state to a two-bracket system, with rates at 5.58% and 5.2%.
- Increases the standard deduction by 3% and raises personal exemptions

from \$2,250 per person to \$9,160 for single filers and \$18,320 for joint filers. The exemption would be \$2,320 for dependents.

- Reduces the privilege tax rates applied to financial institutions to align with recent changes to corporate income tax rates.
- Increases the childcare tax credit from 25% to 50% of the federal allowance.
- Prohibits the sale price of a 1031 exchange property from being considered an indicator of fair market value.
- Eliminates the income tax on Social Security income.
- Repeals the statutory transfer of funds to the Local Ad Valorem Tax Reduction Fund and the City-County Revenue Sharing Fund.

Capping valuation increases on real property - KLA staff testified in opposition to SCR 1604, a proposition introduced during the special session to amend the Kansas Constitution to limit the valuation increase of real property to 4%, or a lesser amount if determined by statute, in any tax year. KLA staff explained the bill actually would not provide property tax relief. The legislation only would affect one component of total property tax liability, which is the product of valuation multiplied by the assessment rate multiplied by the mill levy, which is set by the statewide mill levy or local government budgets. Additionally, artificially capping valuation increases could shift the tax burden from one class of property to others if appraisals of certain classes increase more than 4%, while others increase by less than 4%. Currently, several counties have seen significant increases in residential values, while agricultural values have leveled off or declined. SCR 1604 also would disrupt and likely invalidate the use-value appraisal formula used to determine valuation on agricultural land. The resolution ultimately was not considered during the special session but could resurface during the next regular session.



June 9-12, Kansas Horse Council attended the American Horse Council National Issues Forum. Agency & Hill visits took place following a full schedule of industry discussions.



Pictured above L to R: Alan Hinds, AQHA/KQHA, Tel Wittmer, Legislative Assistant to Representative Tracey Mann, and Justine Staten, Executive Director of Kansas Horse Council.



Pictured above L to R: Cameron Bradshaw, Legislative Correspondent to Senator Jerry Moran, Alan Hinds, AQHA/KQHA, Monica Chapman, Kansas Horse Council Board Member and American Endurance Racing Association, Justine Staten, Kansas Horse Council and Travis Martinez, Legislative Assistant to Jerry Moran.



Episode 14

**Donkeys, Hinnies,
and Mules, oh my!**

June 4, 2024

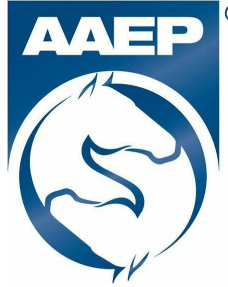
The American Horse Council's special monthly episode onHorses in the Morning with Julie and Emily is about mules, donkeys, and hinnies. Joined by Dr. Amy McLean, a lifelong expert from UC Davis.

Did you know there are over 300,000 mules & donkeys in the US alone, out of 6.6 million equids?

Dr. McLean will share surprising facts about these amazing equids and explore their many roles, from trail riding to showing, and cart pulling.

Tune in to learn why mules and donkeys are more than cute faces with big ears!

Ears Up- Listen Here!



COMMON VECTOR CONTROL TIPS

In epidemiology, a disease vector is any agent which carries and transmits an infectious pathogen into another living organism.

TICKS



CONTROL TIPS: Locate and remove any ticks already attached to your horse; apply **tick specific topical acaricides** directly on the horse; **practice environmental control** by removing brush, moving tall grass and discouraging wildlife on your property.

WHY SHOULD I CARE? Ticks cause local skin and tissue irritation; they **can also transmit diseases** like Lyme disease, equine piroplasmosis, equine granulocytic anaplasmosis, and tick paralysis.

FLIES



CONTROL TIPS: Sanitation (quickly removing and properly disposing manure and garbage; keeping the barn and feeding areas clean); **use horse protection** (such as fly mask and sheets, fly repellent sprays and strong fans); **practice environmental control** (release fly predators, use fly traps).

WHY SHOULD I CARE? Besides irritating horses, flies **can also transmit the causative agent for diseases and conditions** like summer sores, eyeworms, pigeon fever, equine infectious anemia and hypersensitivity.

MOSQUITOES



CONTROL TIPS: practice **environmental control** by removing or draining sites where water can collect and stand long enough to serve as a breeding site; clean and refill water buckets and troughs regularly. **Use horse protection** (fly sheets, masks and inspect repellents).

WHY SHOULD I CARE? **Mosquitoes transmit** arboviruses that cause Eastern Equine Encephalitis (**EEE**), Western Equine Encephalitis (**WEE**), Venezuelan Equine Encephalitis (**VEE**) and West Nile Virus (**WNV**).

SUPPORT SMALL BUSINESS



**The Horse World Saves on
Tractors, Mowers
& Hay Equipment**

"Kansas grazing lands play a key role in the economic sustainability of the cattle industry, which contributes significantly to our state's economy. Grasslands are one of our most valuable natural resources, and they support livestock grazing, healthy watersheds and wildlife habitat. Therefore, conserving our rangeland and native grasslands is a priority for KDA."

-Mike Beam

Secretary

Kansas Department of Agriculture



Kansas Department of Agriculture is working to preserve native grasslands in their state! Learn about the critical role grasslands play in the state and economy from Kansas Agriculture Commissioner Mike Beam.



From the American Horse Council presentation on Recreation, Trails & Land Use during the National Issues Forum.

Losing 175 acres of farm and ranch land every hour in the United States.

2.1 million acres per year.

Loss of land needed to feed our population, raise livestock, or have a horse industry, which includes grazing, stabling, and riding.

Horses are livestock...and we all care about land loss!



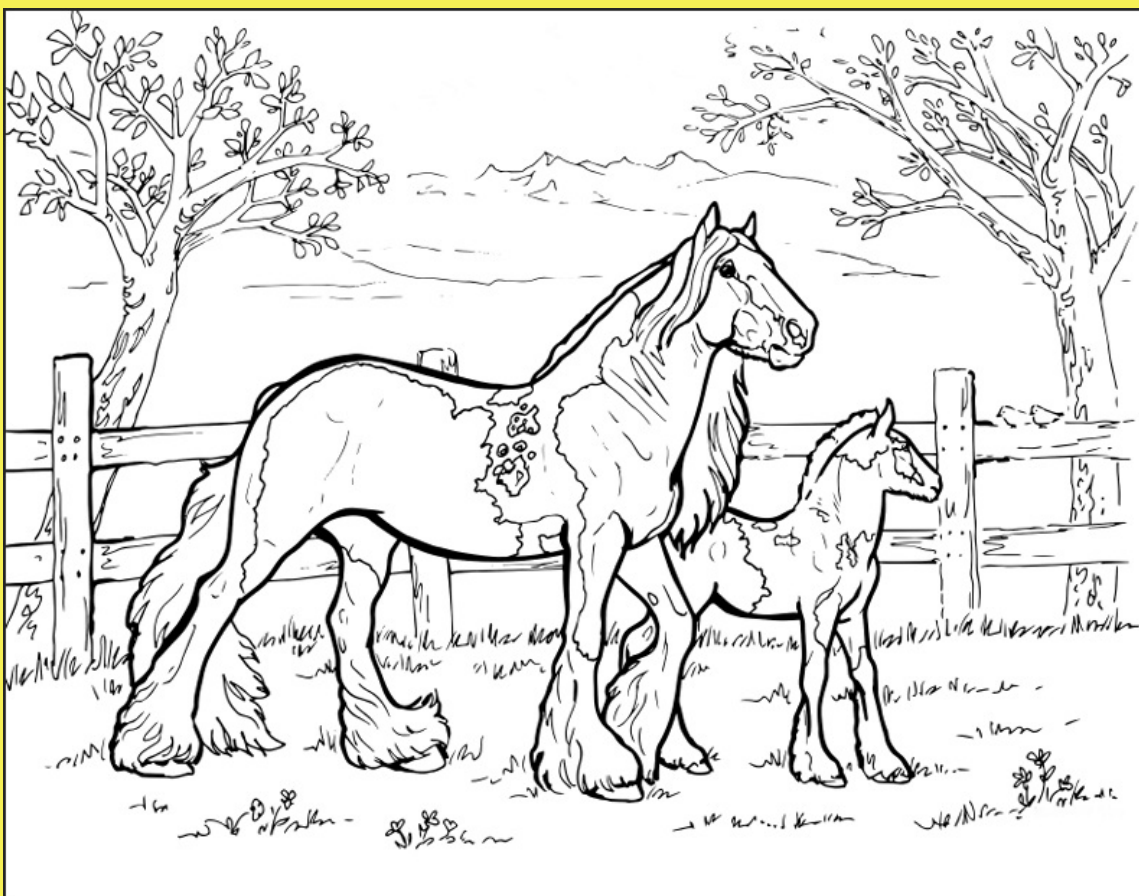
What We Can Do to Protect Our Horse Lands, Facilities and Trails

There are many tools for protecting open lands, including horse farms and ranches, competition venues, trails, hay fields, and the ecologically sensitive lands that often accompany these. Below you will find a discussion of the need for conserving open land; language explanations of a range of conservation tools from conservation easements to purchase of development rights programs; sample language to protect horse access in conservation easements and other conservation tools; guidance on working with land trusts; and an overview of historic and cultural preservation issues.



We are losing more and more equestrian facilities across the United States, and we want to help protect and preserve historic venues like the Illinois State Fairgrounds, which is home to the Midwest Charity Horse Show. Learn more about conservation tools to protect horse land, facilities, and trails in the link below!

[View Link Here](#)



Calling at Breyer fans – we're having a coloring contest! We know you love creating them...and we love seeing your entries!

This contest features a lovely Vanner Mare & Foal!

Get your creative juices flowing and color in your scene using any physical artistic medium – crayons, markers, paint, pens... whatever speaks to you!

Be sure to read the full instructions under "How to Enter" and the Official Rules before submitting your entry!

The prize for this contest for the three (3) winners in each age group, for a total of nine (9) winners, is Ebony Shines & Charlize (Item #1872, ERV \$59.99 USD). *

[Details & Enter Here](#)



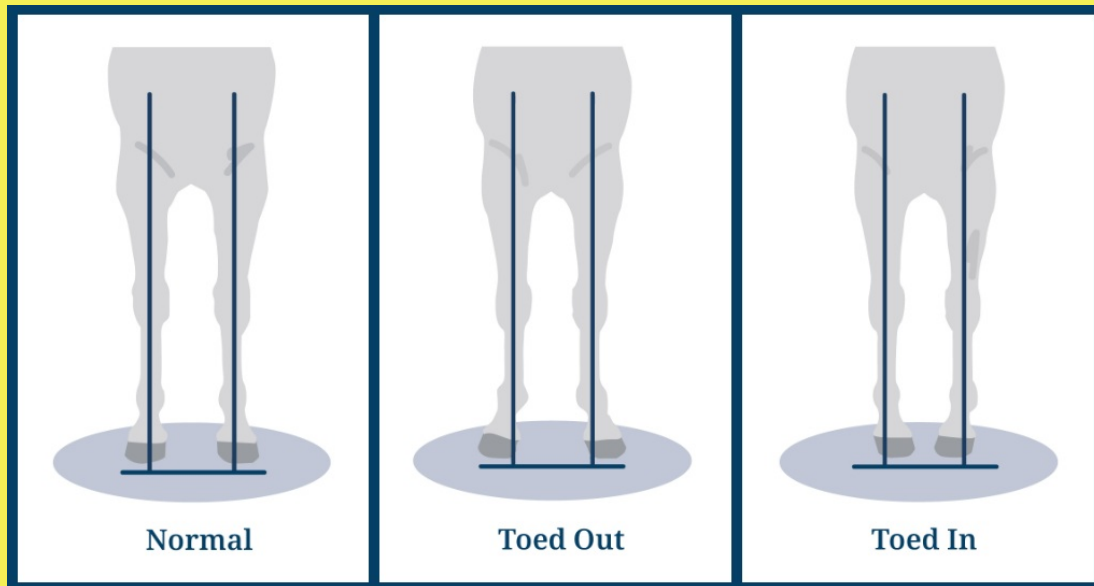
A comprehensive look at supporting soundness to help sport horses perform into the years ahead

Why do some horses compete at top levels year after year, never missing a beat, while others seem to spend more time rehabbing from injuries and ultimately retiring when they should be in their prime? Increasing the longevity of a performance horse's career isn't just about luck; it's a matter of strategic care, training, and management. In this feature we'll explore the myriad factors that can cut a sport horse's career short, with a special focus on the connective tissue you should protect at all costs—joint cartilage.

Let's first look at intrinsic factors with the potential to reduce the life span of your equine athlete's career. For example, poor confirmation puts asymmetrical or excessive pressure on a horse's knees or hocks and disproportionately small hooves strain the delicate internal structures of the horse's foot. Researchers have shown that horses developing hoof lameness are 7.5 times

more likely to have small feet for their body weight, putting them at a disadvantage from the start. Dr. Beau Whittaker, partner at Brazos Valley Equine Hospitals, agrees that genetics and preexisting conditions such as metabolic problems are partly to blame for some soundness issues. "The factors that cause joint pain are varied," he admits. "They typically include a combination of biomechanical forces applied to the joint during training, imperfect musculoskeletal structural anatomy, and subpar footing and shoeing." Those stressors are cumulative, meaning an inadequate training program on poor-quality footing can exacerbate existing issues stemming from less-than-ideal conformation. Inflammation in the bony and soft tissue of the horse's body can stem from trauma and repeated concussion. This brings us to our second category of contributing stressors to lameness in horses: intrinsic factors. Whether or not your horse was blessed by genetics and good conformation, these aspects of his care and management can make or break his athletic career.

[Read Full Article Here](#)



27



FCA RODEO DAY CAMP

July 18th & 19th, 2024 — 9am to 4pm - Louisburg, KS

OFFERING THE FOLLOWING EVENTS FOR DAILY CLINICS:

- Barrels
- Poles
- Roping

FEATURING:

Zoey Sharp - Barrels & Poles
Jason Williams - Roping

COST:

Athletes: \$125

Scholarships available
contact kimjohnson@fca.org

REGISTER NOW:

<https://fca.regfox.com/2024kcrodeo>

FOR INFORMATION CONTACT:

Kimberly Johnson, Camp Director
kimjohnson@fca.org

INCLUDES:

Campers will be going home with a custom
FCA Rodeo t-shirt and FCA bible!!

**for cowboys and cowgirls ages 10-18*

**must bring your own horse*



**REGISTER
HERE!!!!**



F E L L O W S H I P O F C H R I S T I A N A T H L E T E S

9:00am-4:00pm July 18th & 19th in Louisburg, KS

For girls and boys ages 10-18

Events offered: Roping, Barrels, Poles

Stay updated here: [\(20+\) FCA Rodeo Day Camp!!!! | Facebook](#)



With the recent outbreak of highly pathogenic avian influenza (HPAI) in dairy herds in Kansas, Dr. Justin Smith, the Animal Health Commissioner at Kansas Department of Agriculture, joins the Inside Ag podcast to provide clarification and insight on the virus. He explains the signs and symptoms of the virus, breaks down the effects of the recent transportation order and offers tips for producers to protect against HPAI. [Listen to the podcast on your favorite streaming service or here.](#)

For the most recent information regarding Influenza A, visit [Highly Pathogenic Avian Influenza \(HPAI\) Detections in Livestock \(ks.gov\)](#)

**Experience the
Exmark difference!**



Your horses can save you money on a new Exmark mower!



Isn't it time that you experienced the Exmark difference? Known for their

rugged durability, it's no wonder why Exmark outsells their competition 2-1! Your farm would look great with one of these sitting out front!

Give **Equine Equipment** a call today to see what great deals horse owners can get on a new Exmark. We'll get you connected with your local dealer and make the purchasing process a breeze! **877-905-0004**



A GLOWING HEART

by Del Shields Cowboy Music and Poetry

His life was hard though he seldom spoke, of things deep in his heart.
So much of the time he felt alone. But he played his steady part.
He spent his days with horses. His work he dearly loved.
He felt his gift fell nothing short than a gift from up above.
Yet a longing deep still stirred within. An emptiness stirred about.
He stayed the course and lived each day, and seldom let it out.
Oh but when the kids came home. These were his brightest days.
The hugs and laughter, the smiles. Oh how his heart would raise.
The time would pass so quickly. They'd come and then they'd go.
The years they passed by also, like the melting of the snow.
Each visit brought them closer. Closer in many ways.
Closer in heart. Closer in kind. Closer to his parting day.
Oh but when the kids came home, these were his brightest days.
The hugs and laughter, the smiles. Oh how his heart would raise.
They visit now each chance they get. They sweep his dusty stone.
They think of all the love he shared, each time that they'd come home.
He surely smiles with a glowing heart as they visit his cross on the hill.
Yes that old ranch where love was grown, it brings them together still.



THE GOLDEN HISTORIC HORSE RACING FACILITY



What is historical horse racing?

- It's a way of gambling. You bet on horse races that have happened already.
- They are like slot machines. They have spinning pictures, and it sounds like a slot machine.
- You will get information about the horses and jockey before placing your bet.
- The player chooses the order of horses, or you can choose to have the machine choose for you.
- The new facility will be called the Golden Circle Historic Horse Racing

Facility.

About the facility:

- It is going into the old Greyhound Park in Park City that closed in 2007.
- It's 3 stories tall.
- Phil Ruffin is behind the project that will cost roughly \$100 million dollars.
- There are 80 acres of land for the new project.

5 Tips For Equestrian Camps

1



Clean up ALL manure

READ THE RULES: Place all manure in it's appropriate place before departing. Manure Bunker, pack it out or spread it. (but avoid throwing at base of trees) **READ the RULES.**

2



Hay! Clean it up!

Old hay holds moisture and can leave a moldy mess for the next equine, which is very unhealthy.

3



Leave Nothing Behind

Twine or hooks use to fasten buckets, gates, or haybags should be removed. These can be hazards for Equines

4



Bedding is a NO NO!

Your trail groups work very hard to place sand in the corrals for your equines comfort. Shavings mix in and prevent the natural drying of sand.

If corrals are prepared with limestone or gravel, and bedding is needed, then be sure **LARGE** flake shavings are used and **COMPLETELY CLEANED UP.**

5



Pitch In

Watch for WorkBees happening at your favorite Equestrian Trails and Camps, Follow them on social media, invite your riding friends and lend a hand. **Volunteers are ALWAYS needed and so appreciated.**

Michigan Horse Trails Directory

Good things to remember when visiting any equine camping facility, anywhere!

Please respect spaces, wherever you may visit!

JUNE INSPO! How true is this?

IT'S AMAZING THE
NUMBER OF GREAT
PEOPLE IN MY LIFE
THAT I WOULDN'T
HAVE EVER MET IF
IT WASN'T FOR
HORSES

from horse.com fb



**Kansas Horse Council Membership Benefit
Alert!**

Equine Discounts provides exclusive discounts on nationally known products for everyone in the horse world. We are currently partnered with John Deere, Big Ass Fans, Sherwin Williams, ODP Business Solutions, and Farmers Insurance. We offer equine members steep discounts on everything from paint, fans, and office supplies to farm equipment such as tractors, mowers, hay equipment and Gators™!

Anyone with a paid membership to any equine association (such as Kansas Horse Council) qualifies for Equine Discounts.

A percentage of every sale through Equine Discounts is returned to the Equine Industry!

Call 866-678-4289 to start saving today!





Show season means lots of horses together in the same spaces.

EQUINE INFLUENZA 101

Symptoms

Things to look for can include:

- ▶ Fever, up to 106° F
- ▶ Lack of appetite and muscle pain/weakness
- ▶ Dry, harsh to hacking cough (can last up to 6 weeks)
- ▶ Nasal discharge
- ▶ Muscle pain/weakness
- ▶ Lethargy

Prevention



All horses should be vaccinated against equine influenza.

Equine Influenza is highly contagious and spreads rapidly; any horse showing signs of respiratory disease (cough, nasal discharge, persistent fever) should be isolated immediately until the cause can be determined by your veterinarian.

DID YOU KNOW?

"Flu season" is year-round for horses



Transmission

- ▶ Airborne (coughing and snorting), most common
- ▶ Contaminated surfaces such as stalls, wash racks, stocks, water sources, feed, tack, grooming equipment such as wipe rags, and transport vehicles.
- ▶ Contaminated hands and clothing





Know a horse owner in need of assistance? Find support services and safety net programs today.

UNITED HORSE COALITION
EQUINE RESOURCE
DATABASE

WWW.UNITEDHORSECOALITION.ORG



5 Tips to reduce *heat stress*



1. Provide adequate shelter or shade



2. Supply fresh, cool water



3. Apply cool baths or provide fans to move air



4. Exercise in early mornings or late evenings



5. Provide supplemental salt & add electrolyte if sweating heavily

ENF EQUINE NETWORK
FOUNDATION



10
YEARS



DID YOU KNOW...It's **FREE** to Access the Horse Trails of America Map

THE map is **free to access**, but we do ask that all sign in and make an account so that we can keep our community safe. Here's where to make your membership (or take advantage of the six-month free trial for the Trail & Travel Membership): <https://www.horsetrailsofamerica.com/start-membership>. Or if it's easier to remember, [HTA.horse](https://www.hta.horse) will take you to the same spot.

Watch the Video

Want more help? Here's a how-to video to walk you through all the features and what to do. Watch the YouTube channel—and be sure to hit subscribe and like once you're there: <https://www.youtube.com/watch?v=2rQm8Lnd3ko>

The map is up to 1400 locations. If you're looking for a layover or have one to add please make <http://HTA.horse> your first resource. You can review what's up already and post more! We would love to have you post fairgrounds too!





Patrick Gottsch (1953–2024), founder of RFD-TV and The Cowboy Channel

He cared about serving rural America!

Patrick Gottsch's legacy

Born in Omaha, Nebraska and raised on a family farm, Patrick Gottsch did not initially follow in the family tradition, after being told by his father that there was no future in farming. Instead, Gottsch worked on the Chicago Mercantile Exchange before going into the satellite dish installation business. There, he learned that viewers in rural America felt underrepresented in the news, so Gottsch decided to fill that void.

He launched RFD-TV in 1988, but with little in the way of advertising dollars, it failed within a year. Gottsch did not give up. He relaunched in 2000, initially as a nonprofit, with a focus on agricultural news and other topics relevant to rural farmland communities. This time, thanks to shows like "Chris Cox Horsemanship," "American Rancher" and "FarmHer," the channel found an audience. Today, it is available to over 40% of U.S. households with a television.

In 2017, Gottsch launched The Cowboy Channel, with a focus on rodeo sports and horse riding. It was a full rebrand of a network that had begun life in the 1970s as the National Christian Network and later became FamilyNet. A sister channel, The Cowgirl Network, launched in 2023.

Gottsch also opened a music theater in Branson, Missouri, and launched Rural Radio on Sirius XM.

On creating a network devoted to rural life and agriculture:

"I thought, 'Well, shoot, there's nobody else going to do it, so why don't I?' I didn't know any better, so I did." —Money Magazine interview, 2008

Watch this Town Hall



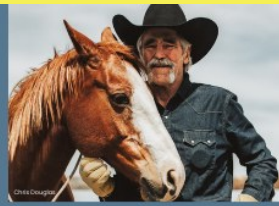
Emily Ward



Christy Cashman



Gabriela Reutter



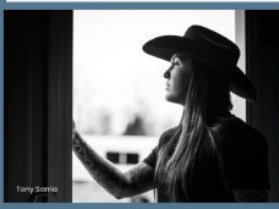
Forrie J Smith



Nigel Barker



Misdee Wrigley Miller



Allie Colleen



Jill Rapport



Randy Travis



Esteemed Equestrians and horse enthusiasts who have championed Seen Through Horses Campaign



Andrea Bocelli



Shelby Van Weelden



Shawn Hinz



Riley Smith



C Thomas Howell



Apolo Ohno



Eli Alger



Whey Jennings



Bourke Floyd



Sophie Grace



Reggie Selma

We want to thank RFD-TV and host Suzanne Alexander for featuring the #SeenThroughHorses Campaign by Horses for Mental Health on RFD TV's "Market Day Report."

Their news story included footage from "The Power of Horses: Supporting Mental

Health in Rural America," a landscape that often masks the silent struggles of the mental health crisis gripping our rural communities.

Special thanks to our Charity Partner, Gateway Family Services of Illinois, and Premier Partner, Rural Minds for your contributions to this video. Bravo to STH Campaign ambassador and country music artist Eli Alger and The Faster Horses. Eli grew up on a farm in Iowa and has long loved horses and we thank him for helping us raise awareness and critical funds for this campaign.

Donate today by visiting horsesformentalhealth.org/campaign.

Additional thanks to Zoetis Equine.

#SeenThroughHorses #HorsesforMentalHealth #mentalhealthawarenessmonth
#ZoetisEquine #LongLiveTheHorse

[Watch RFD segment Here](#)



HERE FOR
HORSES

www.hereforhorses.org



AMERICAN ROYAL AG STEM CAMP



The American Royal agriculture-based STEM Camp, sponsored by UMB Bank, is for students going into 6th, 7th, or 8th grade and will take place June 25-27, 7:30 a.m. to noon at the American Royal facilities. It will focus on exposing middle schoolers to different STEM topics in the ag industry related to plants, animals, and agriculture technology. Each student will be charged a \$45 equipment fee to participate in the camp.

Registration is open now at <https://bit.ly/ARAgStem>!



**KHC Horsemanship
Rewards Program
Announcement!**

It's not too late to enroll for 2024.
Have you renewed for 2024?
For those currently enrolled, don't forget to submit your
HRP logged hours!

[HRP SIGN UP](#)

**Back Country
Horsemen
of Kansas**

**10 years
2014-2024**

Keeping equestrian trails open for future generations.

Kansas Back Country Horsemen of America

Did you know 2024 is BCHKS' 10-year anniversary?
Want to know more about Back Country Horsemen- Kansas?

Like and Follow on Facebook:

[\(20+\) Back Country Horsemen of America Kansas Chapter | Facebook](#)

Many fall trail rides offer opportunities to support trails and trail improvement projects.



Summer Corn Salad

Taste of Home

Ingredients

- 5 teaspoons olive oil, divided
- 1 tablespoon lime juice
- 1/4 teaspoon salt
- 1/4 teaspoon hot pepper sauce
- 1-1/2 cups fresh or frozen corn, thawed
- 1-1/2 cups cherry tomatoes, halved
- 1/2 cup finely chopped cucumber
- 1/4 cup finely chopped red onion
- 2 tablespoons minced fresh basil or 2 teaspoons dried basil
- 1/4 cup crumbled feta cheese

Directions

- 1. In a small bowl, whisk 4 teaspoons oil, lime juice, salt and pepper sauce; set aside.
- 2. In a large skillet, cook and stir corn in remaining oil over medium-high heat until tender. Transfer to a salad bowl; cool slightly. Add the tomatoes, cucumber, onion and basil. Drizzle with dressing and toss to coat.
- 3. Let stand for 10 minutes before serving or refrigerate until chilled. Sprinkle with cheese just before serving.

Kansas Horse Council Specialty License Plate

- Kansas Horse Council license plates are available at your local County Treasurer's office.
- You don't have to be a member to sport one, on your car, truck or trailer!
- Show your love of horses with this colorful statement plate!

KHC License Plate Info



ENJOY THE RIDE WITH KHC!!

GET A KANSAS HORSE COUNCIL TAG
PROUDLY SHOW YOUR SUPPORT FOR KHC AND THE WORK IT DOES.

KANSAS HORSE COUNCIL PLATES
are available to anyone who owns or leases an automobile, RV, truck or trailer with a gross weight of 20,000 pounds or less.

WHAT YOUR TAX DEDUCTION SUPPORTS

- RECREATIONAL AND TRAIL MAINTENANCE
- EQUINE HEALTH AND WELFARE
- EDUCATION PROGRAMS
- YOUTH ACTIVITIES AND SCHOLARSHIPS

HOW TO GET YOURS:
TROT over to your County Treasurers Office
FILL OUT a Kansas Royalty Tag form
PAY a one time production charge of \$50.00 plus title fees, registration fees, personal property tax and a \$50 donation to the Kansas Horse Council. The \$50 tax deductible donation will appear on your paperwork every year when you renew! If the vehicle is currently tagged, the original plate must be returned and the current owner's registration and proof of insurance will need to be provided.

Kansas Horse Council
www.kansashorsecouncil.com



BACK COUNTRY HORSEMEN OF KANSAS

What's the best way to stay informed of BCHKansas news and activities?

Follow Facebook.

There are several Facebook pages set up to keep BCHKansas members and all equestrians up-to-date on activities on several of our public trails. Here's a list:

Back Country Horsemen of America Kansas Chapter
Sunflower Chapter of Back Country Horsemen of Kansas
Saddle Ridge Chapter of Back Country Horsemen of Kansas
Tuttle Creek Chapter of Back Country Horsemen of Kansas
Saddle Ridge Chapter
Big Hill Lake Riders
Friends of Randolph State Park
Friends of Rockhaven Park
Let's Ride—Perry Lake
Kanza Rail Trails Conservancy

Receive notifications of workdays or see reports on trails-maintenance or campground improvements. Join in on workdays whenever possible!

Follow the www.bchkansas.com website.

Encourage a new member to join BCHKS and be entered into an end-of-year drawing.

BCHKS 2023 Volunteer Hours Summary

Across Kansas, BCHKS volunteers are assisting in the maintenance of trails on public lands. We do make a difference! Equestrian volunteer work hours on Kansas public lands in 2023 are as follows:

(Formulas provided by BCHA and determined by The Independent Sector.)



Backcountry Horsemen of America - Kansas			
Volunteer Hours Report			
January - December 2023			
	Totals	Rate per hour/mile/day	Total Value
Total Basic Hours	539	\$29.95	\$16,143
Total Skilled Hours	1398	\$44.93	\$62,812
Non-Trail Hours	1076	\$29.95	\$32,226
Travel Time	201	\$29.95	\$6,020
Total Hours	3214		\$117,201
Personal and Stock Use	11738	\$1.00	
Total Travel Miles	11738		\$11,738
Power Equipment	730	\$30.00	\$21,900
Heavy Equipment	165	\$110.00	\$18,150
Total Equipment Hours	895		\$40,050
Total Stock Days	152	\$100.00	\$15,200
Total Donations	\$11,466		\$11,466
	Total		\$196,666

Keeping Kansas Trails Open for Future Generations!

2023 Trail & Campground Improvements

*Join both BCHKS and Kansas Horse Council at discounted rate with one payment.
www.kansashorsecouncil.com*

Big Hill Lake BCHKS:

~ New water hydrant at Timber Hill Trailhead funded by endurance ride donation

Chisholm Trail BCHKS:

~ Planned & hosted 6 Fill-the-Campground events (donation of manure cart to each)
~ BCHA \$500 grant funded safety vests, eye/ear protection, hand tools, chainsaw

Clinton Lake (Sunflower BCHKS):

~ Benefit ride raised \$850 for ongoing trail maintenance projects

Eisenhower State Park, Melvern Lake (Sunflower BCHKS):

~ Several new cross trails added to trail system
~ Benefit ride funds used to build round pen at West Point Equestrian Campground
~ Benefit ride raised \$5,480 for campground/trail improvements
~ Hosted *Best of America by Horseback* in September

Hillsdale State Park (Saddle Ridge BCHKS):

~ Hosted *Best of America by Horseback* in September
~ Installation of new bathroom near shelter house by park management
~ All campsites now have pen
~ Extensive clearing and widening of trails
~ Fundraiser event raised \$3,000 for trail/campground improvements

Kanopolis State Park:

~ Benefit rides raised \$1,450 for trail/campground improvements

Perry State Park (Sunflower BCHKS):

~ Benefit ride raised \$5,890 for campground/trails
~ Benefit funds used to rebuild tractor used for mowing trails
~ Water and electric lines updated by State Park management
~ Work began on site for new arena

Randolph State Park (Tuttle Creek BCHKS):

~ Benefit ride raised \$1,200 for campground/trail improvements
~ BCHKS grant funded purchase of two manure carts for campground

Since 2014, equestrian volunteers have donated 29,538 hours toward the preservation and maintenance of trails on Kansas public lands with a value of \$1,902,543!

BCHKS, celebrating 10 years in 2024!!

bchkansas.com or bcha.org

On Facebook - Back Country Horsemen of America Kansas Chapter

**In 2023, BCHKS
volunteers
contributed
3,214 hours of
work on public
trails. This
equates to
\$195,655!**

Joint membership with KHC & BCH-KS for you!



Kansas Chapter



JOINT MEMBERSHIP AVAILABLE IN BOTH ORGANIZATIONS!

Individual: \$80 (\$15 to BCHA/\$15 to BCH-KS/\$15 to KS Chapter of Choice/\$20 for insurance/\$15 to KHC)
Family: \$100 (\$15 to BCHA/\$15 to BCH-KS/\$15 to KS Chapter of Choice/\$40 for insurance/\$15 to KHC)

Trails Advocate Level Individual: \$80
Trails Advocate Level Family: \$100

**One enrollment to support two organizations!
Simple and makes sense!**

INTERSCHOLASTIC
EQUESTRIAN
ASSOCIATION



GET A
JUMP
ON THE **2023-2024**
IEA SHOW SEASON



Join Now! Competitions begin August 1st.

**Attention Kansas lesson barns, you too
could become an (IEA) Interscholastic
Equestrian Association facility and
partake in shows & awards!
Checkout their Facebook page and
website, www.rideiea.org**

Kansas Horse Council Rewards Programs



DILLONS COMMUNITY REWARDS PROGRAM:

- When you shop at Dillons and use your Rewards card, KHC will earn a percentage rebate based on your Dillon's purchases!

To link & register your rewards card click here: **Dillons Rewards Link** and log into your existing account. Search for Kansas Horse Council or enter our NPO number, KS920 and click Enroll. New users will need to create an account which requires some basic information, a valid email address and a *Rewards Card. *You must have a registered Dillons Food Stores rewards card account to link the Community Rewards program to Kansas Horse Council. (Cards are available for FREE at any Dillon's customer service desk.) SHOP: Purchases will not count towards rebates for KHC until you register your rewards card and link to Kansas Horse Council here: **DILLONS REWARDS LINK** Registered Rewards Cards must be swiped at checkout or use your phone number registered with your Rewards Card when shopping for purchases to count. This program does not affect your Fuel Points balance. Points will still accumulate for your personal use. Rebate program is based on purchases at Dillon's stores payable to Kansas Horse Council as a Non-Profit Organization. Thank you for your continued support to the voice of equine enthusiasts in Kansas!



IT'S TIME TO JOIN UP **EARN REWARDS**

WANTED ALL EQUINE LOVERS

THE KANSAS HORSE COUNCIL PRESENTS HORSEMANSHIP REWARDS PROGRAM

Earn rewards while working with your favorite equine friends!
This program is open to anyone who enjoys working with horses, minis, donkeys, ponies, or mules, including "grade" equines.

PROGRAM RULES & REQUIREMENTS:

- Must be a current KHC Member.
- Must pay a \$35.00 initial program enrollment fee the first year and then a \$15.00 annual program fee thereafter.
- May ride or handle more than one horse and it is not necessary to be the owner of the horse.
- Hourly log sheets may be submitted monthly, quarterly or annually. Annual submissions must be postmarked no later than December 31st.
- The KHC Member participant will need an individual membership to track member rewards by name.
- Rewards points are not retroactive. Date of log begins on enrollment date.
- Rewards are subject to change based on availability.

Awards are given at 25, 50, 100, 250, 500, 1000, 1500 & 2000 hour milestones. Upon 2000 hours completed, members are welcome to re-enroll and start again!

FOR MORE INFORMATION CONTACT:
KANSAS HORSE COUNCIL, 8831 QUAIL LANE, SUITE 201, MANHATTAN, KS 66502
www.kansashorsecouncil.com | 785-776-0662 | Fax 785-539-2928 | director@kansashorsecouncil.com

Saddle up with
Kansas Horse
Council
Horsemanship
Rewards
members only
program! Earn
prizes for
spending time
with horses!

Be sure to renew your KHC membership for 2024 and pay your HRP renewal fee- \$15, to rollover your hours into the New Year!

Logs are submitted quarterly.
Saddle up, ride and earn rewards...it's a great way to start a NEW year!

For more details visit:
[Horsemanship Rewards Info](#)

Become a [Friends of KHC Sponsors](#) and support the HRP program!

EQUINE DISCOUNTS

A percentage of every sale is



returned to the equine industry!



As a member of KHC, you are eligible for these discounts.



JOHN DEERE

John Deere offers substantial discounts on everything from mowers and tractors to Gator™ Utility Vehicles, hay and construction equipment.

- The MSRP Program: up to 28% off
- The Cash Bonus Program: up to \$2,700 off
- Construction Equipment: up to 26% off



BIG ASS FANS

BAF is committed to Energy Efficient Air movement and providing comfort to the equine industry. Equine members will receive up to a 25% discount on qualifying purchases for all Equine Facilities and Personal Residences.



By establishing a Sherwin-Williams account, members are eligible for these great benefits:

- 35% off paints at list price
- 30% off brushes, rollers and associated products at list price



ODP Business Solutions™ (formerly Office Depot) and Equine Discounts have partnered to provide exclusive benefits and savings on a wide selection of office products and services.



@myequinediscounts

@myequinediscounts

Call 866-982-6872 to start saving!
EquineDiscounts.com



Learn About Kansas Horse Trails! RIDE Kansas!

Saddle Up and RIDE Kansas! Visit our Kansas Department of Wildlife and U.S. Corps. of Engineers equestrian facilities. Visiting and riding or camping shows support of our parks, and keeps them open for future use and possible funding of improvements. Always leave only hoofprints behind. Share our multi-use trails. Call before you haul if in doubt



before your visit.
KDWP State Parks info.

Do you have your copy
of our Equestrian Trails
in Kansas?

Copies are provided
FREE at all Kansas
Horse Council events, or
\$3 for s/h and we'll mail
you one.

These guides are also
available at all KDWP
offices.

**Trail info is also
available
online here:**

Public Trails in Kansas



Kansas Horse Council | 8831 Quail Lane Suite 201 | Manhattan, KS 66502 US

[Unsubscribe](#) | [Update Profile](#) | [Constant Contact Data Notice](#)



Try email marketing for free today!