

***KANSAS HORSE COUNCIL NEWSLETTER.
NEWS FOR KANSAS AND THE EQUINE INDUSTRY.***

August 2024 EDITION

**News, announcements and events from around Kansas,
regarding the Kansas equine industry.**

**Legislation, Insurance, Equipment & Retail discounts are just
some of our membership benefits! Visit our website to learn
more.**

Join our herd!



Visit Our
Website!



**JOIN
NOW**



2024

WWW.KANSASHORSECOUNCIL.COM

2024 Upcoming Events and Calendar

This month there are shows, rodeos, trail rides, and more!

See them here:

Calendar of Submitted Events

Any questions regarding events, please call us at

785-776-0662

If interested in more information or to register for an event, please email us
at

director@kansashorsecouncil.com

NEW MEMBERSHIP FORM ONLINE

MEMBERSHIP OPTIONS

MEMBERSHIP OPTIONS

Join Now

1 MEMBERSHIP LEVELS

- ☐ Joint Individual Membership- BCH- KS/ KHCC \$80.00
- ☐ Joint Family Membership- BCH- KS/ KHCC \$100.00
- ☐ Student Membership- Kansas Horse Council \$35.00
- ☐ Individual Membership- Kansas Horse Council \$50.00
- ☐ Family Membership- Kansas Horse Council \$80.00
- ☐ Club Membership- Kansas Horse Council \$35.00
- ☐ Business/Organizational Membership- Kansas Horse Council \$100.00
- ☐ Individual with Back Country Horsemen of KS \$45.00
- ☐ Family with Back Country Horsemen of Kansas \$50.00
- ☐ Business/Affiliate Org with Back Country Horsemen of KS \$50.00

☒ I would like to automatically renew my membership

MEMBERSHIPS

1 MEMBERSHIP LEVELS

- ☐ Joint Individual M KS/ KHCC
- ☐ Joint Family Mem KHCC
- ☐ Student Members Council
- ☐ Individual Membe Horse Council
- ☐ Family Members Council
- ☐ Club Membership Council
- ☐ Business/Organiz Membership-Kansas Horse Council

Log in to your existing account

Login Name:

Password:

Log In

Forgot your password?

Enter the e-mail address associated with your account and we'll send you a link to recover your login information.

Email:

Recover Account

NEW for 2024 and beyond!

When you set up an account and you are logged in, any purchases you make are listed in your personal account, so you can always see your transactions and you'll always have your member number handy.

HRP, Lifetime Insurance, Signs and Guides are in the "store" options, just under the Membership options page.

We hope you like the changes. We'll still be able to take memberships over the phone or check by mail...this online provides convenience and an auto-renewal option if you'd like!

Feel free to email or call if you have any questions.
director@kansashorsecouncil.com, 785-776-0662

Watch the
Replay and Take
the Poll!



Recorded: July 25, 2024



Thank you to those who joined us for the Equine Sector Session—if you missed the session, the recording is available [here](#).

To guide the work that the Kansas Horse Council will do over the next year, please participate in the poll below.

The poll will allow you to select multiple equine sector priorities, please choose only your top three priorities.

Equine Sector Priorities (PICK 3) (View/vote in browser)

1. Adding/Improving Equine Expo Infrastructure
2. Defining Horses as Livestock
3. Appointing a dedicated Kansas Equine Extension Specialist
4. Supporting consumer demand for entry-level experiences to equine activities
5. Restoring Federal Appropriations for USDA inspectors as it applies to horse exports and horse processing
6. Establishing an Equine Check-Off Program
7. Sharing Equine Economic Impact

8. Support KS Horse Racing as needed
9. Develop equine handling protocol for emergency response & law enforcement
10. Increased trail maintenance, trail riding promotion, and opening of new trails for equestrian use
11. Other: please respond via email with "other" sector priority

[VOTE HERE](#)

[2024 Equine Sector Session Recording Link](#)

[2023 Equine Sector Session Recording Link](#)

Kansas
Department of Agriculture

SAVE THE DATE

Kansas
2024 AG SUMMIT
GROW SMARTER. GROW STRONGER. GROW KANSAS.

2024 Kansas Governor's Summit on Agricultural Growth
WEDNESDAY, AUGUST 21, 2024
Kansas State University Alumni Center | Manhattan, Kansas

Come early and join us for the social event!
AUGUST 20

This event is FREE, although we request that you register online. Registration will open at a later date.

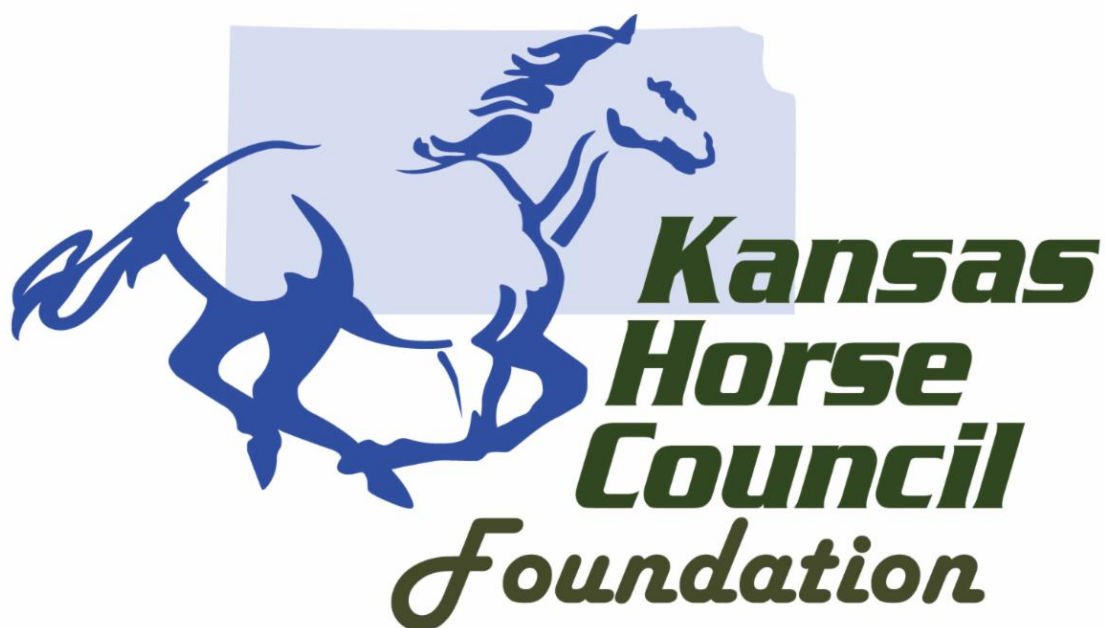
A social event will be held the evening of Tuesday, August 20, also at the Alumni Center. Details will be posted on our website as they become available.

agriculture.ks.gov/GrowAg

REGISTER HERE



Planning for the future?
Consider a tax deductible donation to
the Kansas Horse Council Foundation, a 501c3 charitable
organization, promoting equine education and providing academic
scholarships to equestrians.



Stay tuned for the upcoming



Sept. 6-15 2024



2024 EXPO SCHEDULE

SEPTEMBER 5th – 15th



Thursday Sept. 5

8:00 AM Horse Stalls Open

Friday Sept. 6

8:00 am Working Equitation

12:00 pm Draft Horse Show

Saturday Sept. 7

8:00 am Working Equitation

10:00 am Draft Horse Show

4:00 pm Draft Horse Team Pull

6:30 pm Draft Horse Show

Sunday Sept. 8

10:00 am Draft horse Show

Monday Sept. 9

10:00 am Mounted Shooters Demos

12:00 pm Mounted Shooters Demos

2:00 pm Mounted Shooters Demos

2:00 pm Barrel Bash

4:00 pm Mounted Shooters Competition

Tuesday Sept. 10

10:00 am Mounted Shooters Competition

2:00 pm Barrel Bash

Wednesday Sept. 11

9:00 am Dog Demos

12:00 pm 4-H Horse Move – in (until 3 pm)

5:00 pm 4-H Horse Move – In (until 7 pm)

Thursday Sept. 12

7:00 am 4-H Horse Barns Open (until 9 am)

9:00 am 4-H Horse Show

6:00 pm 4-H Stalls Open (until 9pm)

Friday Sept. 13

7:00 am 4-H Horse Barns Open (until 9am)

8:00 am Llama Stalls Open

8:00 am 4-H Horse Show

6:00 pm Mustang Vet Check (until 8 pm)

6:00 pm 4-H Stalls Open (until 9 pm)

Saturday Sept. 14

7:00 am 4-H Horse Vet Check (until 9 am)

8:00 am 4-H Horse Show

12:00 pm Mustang Show

3:00 pm Llama Show

Sunday Sept. 15

8:00 am Mustang Show

8:00 am Llama Show



KANSAS
STATE FAIR

Historic Lake Scott Trail Ride

**On site registration
8:45am to 9:45am
Ride out at 10:00am**



**Saturday,
September 7th, 2024**

sponsored by



**Alisha Owens
620-309-7828**

State Park Permit Required

REGISTRATION FORM



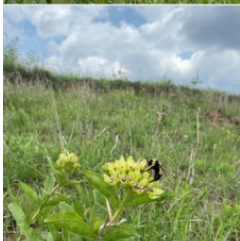
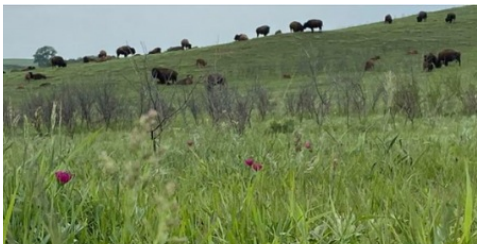
**ARE YOU INTERESTED IN SPONSORING AWARDS FOR THE
KANSAS STATE FAIR 4-H HORSE SHOW?**

Check out the list of classes and divisions you can help with. Contact Kelsey Nordyke if interested in supporting.

klnordyke@ksu.edu
(620) 222-1311

Your name will be listed in the Show Program!

LIST OF CLASSES TO SUPPORT



Join us for lots of fun and
fellowship on the beautiful
prairie at

Maxwell Wildlife Refuge!

www.maxwellwildliferefuge.com

10am-3:30pm

Purchase tickets online, or by phone
620-654-7230 or email your
reservations to
maxwellwildliferefuge@gmail.com

\$35/Full day with meal
\$25/half day with meal-
(choose morning or afternoon).
Lunch at Noon.

Bring your own horse!

November 16th sponsored by



[Visit MWR Website](http://www.maxwellwildliferefuge.com)



AMERICAN
HORSE COUNCIL

How do you tell bugs to
“buzz off”?

bit.ly/AHCBuzzOffSurvey



Bug season is here!
And we want to know, how do you make flies and ticks
“buzz off”?

There are Federal Regulations in the works that may limit what
products we can use to keep our horses and donkeys insect-
free.

So be the flea in our ear and make a beeline for this 1-minute
survey to let us know how we can best advocate for your
needs.

SURVEY



SNIPPETS OF ARTICLE POSTED ON EQUINE NETWORK FOUNDATION BY EDITORS OF PRACTICAL HORSEMEN.

REDISCOVERING RIDING OFF THE TRACK: ROSIE NAPRAVNIK

In a sport dominated by men, the 5-foot-2 Rosie, with a sweet face and calm demeanor, was a fierce competitor since her first race—literally. Since then, she's earned her status as one of the world's most successful jockeys with a list of firsts and bests that rivals the most decorated race riders in history.

In 2013 Rosie became the first female jockey to compete in all three jewels of the Triple Crown, riding Mylute to a fifth-place finish in the Kentucky Derby and third in the Preakness Stakes and Unlimited Budget to a sixth-place finish in the Belmont Stakes. In 2014 she guided the filly Untapable to six graded stakes wins, including victories in the Kentucky Oaks and the Breeders' Cup Distaff, becoming the first female rider to win multiple editions of the Oaks and the first female rider to win multiple Breeders' Cup races. The Breeders' Cup win clinched year-end champion honors for Untapable and, during the post-race interview, Rosie announced that she and Joe were expecting their first child and that she would be retiring after that weekend.

Rosie, who retired from racing last fall, has worked to promote the Thoroughbreds she loves, especially in second careers as sporthorses. Now 27, Rosie currently sits on the boards of several Thoroughbred aftercare organizations, including Old Friends and the Retired Racehorse Project, and can be found most mornings assisting Joe in his racetrack shedrow or escorting racehorses to the track aboard Sugar. "I try to support as many Thoroughbred aftercare and adoption organizations as I can," she says. "Thoroughbreds have given me nearly everything I have."

Having a background with Thoroughbreds both on and off the racetrack has given Rosie a unique and thoroughly informed understanding of how best to acclimate a former racehorse to a new career. She says the process of "letting a horse down" is key to him becoming well-adjusted in his off-track life both mentally and physically, and using a mix of chiropractic, acupuncture and massage therapy can dramatically help a horse excel in his initial reschooling.

"Racehorses are exposed to so many things, and I think that helps them tremendously in their second careers," Rosie explains. "They're always moving and changing scenery and being asked to perform in different places. Claiming

horses like Sugar I find are especially adaptable to change. Many times they switch from one trainer to another, and each trainer has his or her own routine and way of doing things. I think it helps them go into reschooling with such a good attitude and makes them so adaptable to new situations, experiences and surroundings.”

[READ FULL: ARTICLE HERE](#)



The graphic is a promotional poster for the 'Road to the Horse 2025' event. It features a large, stylized, multi-colored horse head on the right side, with a white blaze on its face. On the left, there is a circular inset photo of Tik Maynard, a man in a red shirt and black riding helmet, looking forward. Below the photo is a small Canadian flag icon. The text 'ROAD TO THE HORSE 2025' is prominently displayed at the top left, with 'MARCH 27-30 | LEXINGTON, KY' underneath it. Below the photo, the name 'TIK MAYNARD' is written in bold, followed by 'ROAD TO THE HORSE 2025 CHAMPIONSHIP COMPETITOR'. At the bottom, it says 'TICKETS ON SALE NOW AT' followed by the website 'WWW.ROADTOTHEHORSE.COM'.

ROAD TO THE HORSE 2025
MARCH 27-30 | LEXINGTON, KY

TIK MAYNARD
ROAD TO THE HORSE 2025
CHAMPIONSHIP COMPETITOR

TICKETS ON SALE NOW AT
WWW.ROADTOTHEHORSE.COM

FROM RTTH: We're excited to announce that RTTH 2024 World Champion Tik Maynard will return in 2025 to defend his title! We can't wait to watch him back in action, in the round pen, in 2025!

"I have followed Road to the Horse since 2012, and I always get drawn up in the suspense: Who will be invited? Who will win? What drama will unfold? However, most of all, I look forward to learning. In preparation for Road to the Horse 2024, I learned more about horses in eight months than I think I did in the previous eight years. I am honored to be invited back to compete at Road to the Horse 2025. I can't wait to keep learning, I can't wait to see who else is invited, I can't wait to meet the colts and I can't wait to see everyone there." Tik Maynard -Tik Maynard Company



The decision to open your barn or pasture to boarders is not as straightforward as it may seem. Two knowledgeable professionals join us today to talk about what you need to know before you make this big decision! Listen in...

Your Hosts: Julie Broadway (President) and Emily Stearns (Health, Welfare, and Regulatory Affairs Liaison) of the American Horse Council with special guests Julie I. Fershtman and Delia MacDonald.

By the end of this episode, you'll have both the legal and logistical factors to consider before deciding if you should open your property to boarders.

[LISTEN HERE](#)

Hemp Hurd Bedding: The Ultimate Guide for Horses

Hemp hurd for horses has many advantages. Download the deep litter guide for horses from Midwest Hemp Tech.

AUGUSTA, Kan. – Hemp hurd for horses has many advantages. Ultra absorbent, it reduces odor and pests. Utilizing hemp hurd in the deep litter method for horses and other animals is good for the animals, the earth and your pocketbook.

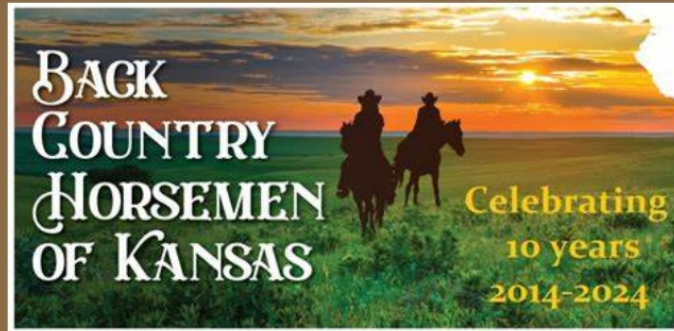
Follow the recommendations below and download the ready-to-print guide and hang in your stalls (*contact [Midwest Hemp Technology](#) to request*).

- Prepare the Stall – Start with a clean stall by removing any existing bedding and debris. Ensure proper drainage to prevent moisture buildup.
- Spread Hemp Hurd – Evenly spread a layer of hemp hurd on the stall floor. Aim for a thickness of 4-6 inches to provide comfortable bedding for your horse.
- Monitor Moisture Levels – Regularly check the moisture content of the hemp hurd bedding. Hemp hurd absorbs moisture well, but it's essential to maintain a balance to prevent excessive dampness.
- Add Additional Layers – As your horse produces waste, add additional layers of hemp hurd to cover and absorb urine and manure. This helps build up the bedding over time.
- Turn & Mix – Periodically turn and mix the bedding to promote aeration and prevent the development of ammonia odors. Use a pitchfork or similar tool to fluff up the hemp hurd.
- Remove Soiled Material – While the deep litter method encourages layering, it's crucial to remove heavily soiled or wet spots regularly. This prevents odors and maintains a healthy environment.
- Monitor Horse Health Throughout – Keep an eye on your horse's health, especially their hooves and respiratory system. Ensure that the hemp hurd bedding is not causing any adverse reactions. Adjust the thickness of the hemp hurd bedding based on the season and your horse's needs. Thicker bedding may be required in colder weather.
- Cleaning & Disposal – Despite the deep litter method, conduct a thorough stall cleaning periodically. Remove all bedding, clean the stall, and start the process again with fresh hemp hurd. Dispose of used hemp hurd in an environmentally friendly manner. Consider composting and local waste disposal regulations.

About Midwest Hemp Technology

Midwest Hemp Technology buys locally grown hemp crops from Kansas farmers for use in manufacturing and food. Founded by hemp industry veterans and business development experts, Midwest Hemp Technology takes a collaborative approach to building the supply chain. Contracting with farmers and end-use manufacturers, the company makes hemp industry connections that contribute in significant ways to the crop's long-term viability in the U.S.

Hemp grain is cleaned, sorted, dehulled and pressed to make food for humans and animals. Midwest Hemp Technology makes a variety of hemp-based products from Kansas farms for use around the country.



We're midway through 2024 already, and fall riding will be here before we know it!

Be sure to add these fun events to your calendars!!

Aug 31, Annual Perry State Park Benefit Ride. Go to Let's Ride—Perry Lake, Events, on Facebook for details. Be sure to call state park office directly for camping reservations, 785-246-3449.

Sept 28, Annual Benefit Ride for Randolph Campground & Trails, Tuttle Creek Lake. Go to Tuttle Creek Chapter of BCHKS, Events, on Facebook for details. Call state park office directly for camping reservations, 785-539-7941.

Oct 5, Murder Mystery Ride, Saddle Ridge Campground, Hillsdale State Park. Details pending. Call state park office directly for camping reservations, 913-594-3600.

Oct 11-13, Annual Eisenhower State Park (Melvern Lake) Benefit Ride. Find ride flier in Comments. Call park office directly for camping reservations, 785-528-4102.

Oct 19, Annual Moonlight Ride with Chili & Pie Supper at Perry State Park. Go to Let's Ride—Perry Lake, Events, on Facebook for details. Call park office directly for camping reservations, 785-246-3449.



SHHH... IT'S A SECRET!

imgflip.com

**DID YOU HEAR THE NEWS?
KANSAS IS GETTING HORSE RACING BACK AT EUREKA DOWNS IN 2026!
GOT ANY HORSE RACING FRIENDS?
SHARE THE SECRET!**



KOOL KURTAINS

Create a Haven for your Horses



For Barns
& Run-in Sheds

Deflects 80% of
the sun's heat rays

Screens out
insects and birds

AMERICAN ROYAL UPCOMING EVENTS



AUG. 23 - 25 2024
CUTTING HORSE
SHOW



AUG. 31 - SEPT. 1 2024
ARABIAN HORSE
SHOW



SEPT. 4-8 2024
QUARTER HORSE
SHOW



NOV. 11-16 2024
UPHA AMERICAN ROYAL
NATIONAL CHAMPIONSHIP
HORSE SHOW

Equine Events by The American
Royal



Attention!

**FANS OF
BREYER**



Breyer

National Fun Day!

Save the Date 10.19.2024

[More Information](#)

*"A rare opportunity to ride
unique ranchland in SW KS"*



www.kansashorsecouncil.com

October 18-19, 2024 Clawson Ranch in Englewood, KS

Alisha Owens, 620-309-7828
or email: mommyheckel@gmail.com

Camp Friday, Oct. 18.

Ride Saturday, Oct. 19.

Mount up and depart at 10:00am, pack your own lunch.
Enjoy pulled pork dinner & potluck sides in the evening.

Camp Saturday night.

Enjoy a 2 hour ride Sunday Oct. 20 before you leave.

PRE REGISTRATION IS REQUIRED

www.kansashorsecouncil.com

[REGISTRATION FORM](#)



AHC Reel of Industry Updates

JOIN US!



We invite you to participate in the
Heavy Horse Show
September 20-22, 2024

Featuring in hand, under saddle and
driving classes for Gypsy, Draft & Friesian.

Offering a High Point Farm
Single/Team Exhibitor award.

Barrel Racing, Obstacle Course,
Log Skid, Feed Race and more!

Online entries open July 1 and
close August 15 without penalty.

To view the Competition Guide for more
information and show schedule, visit
www.okstatefair.com.



Contact:

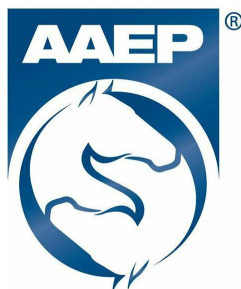
Marc Pankow

mpankow@okstatefair.com

(405)448-6735

OKLAHOMA
STATE FAIR

September 12-22, 2024
Oklahoma City, OK



Summer is a great time of the year to be a horse owner but let's not forget that heat, aggressive insects, and drought-hardened pastures can really impact the health and comfort of our equine friends.

One of the side effect of the heat for some horses is the inability to sweat properly. This condition, called anhidrosis, is potentially dangerous for horses because it compromises their ability to thermoregulate even in weather that doesn't seem that hot, and therefore puts them at higher risk of heat stress.

Anhidrosis is not fully understood yet; it is widespread in the hot and humid regions of the southeastern United States and the Gulf states, but it is also widely reported elsewhere during the summer and particularly during heat waves. If your horse has a high respiratory rate and does not seem to tolerate turnout on hot days, be sure to discuss it with your veterinarian.

Remember that administering unnecessary medications without consulting your horse doctor first could do more harm than good, as it puts your equine friend at risk of developing harmful side effects!



SIGNS OF ANHIDROSIS IN HORSES

Anhidrosis is defined as the **inability to produce an adequate amount of sweat** in response to increased body temperature. This condition is potentially dangerous for horses as it puts them at **increased risk for hyperthermia or heat stroke**. Common symptoms can include:



Increased respiratory rate



Minimal sweat production



Failure to cool after exercise



Fatigue



Poor skin and coat health

“Kansas grazing lands play a key role in the economic sustainability of the cattle industry, which contributes significantly to our state’s economy. Grasslands are one of our most valuable natural resources, and they support livestock grazing, healthy watersheds and wildlife habitat. Therefore, conserving our rangeland and native grasslands is a priority for KDA.”

-Mike Beam

Secretary

Kansas Department of Agriculture




On to Safer Pastures: Protecting Horses from Poisonous Plants



Written by *Valley Vet Supply*

Oklahoma State University professor, Extension equine specialist



details poisonous plants impacting horses, shares harrowing first-hand account

The pastures were recently cleared from overgrown trees and brush, and Kris Hiney, PhD, Oklahoma State University assistant professor and Extension equine specialist, closely looked over the brush piles to make sure no poisonous plants or trees had surfaced. "All clear," she thought as she let her two horses back into the field.

"The very next day, they were already showing toxicity symptoms," Dr. Hiney said. "It turns out I did have black locust trees in the pasture, and when the horses had a chance to get to them, it almost killed them. I called my vet and said, 'This isn't colic. This is toxicity. And I need you here now.'"

Of the two horses, one had lower tolerance to the toxic tree. His heartrate was elevated over 90 for a full 24 hours and to save his life, he required three days of supportive care in the veterinary clinic. Luckily, both horses survived, but the situation could have been life-ending, if Dr. Hiney was not familiar with poisonous plants and signs of toxicity.


There are many poisonous grasses, plants and trees that can gravely impact horse health, such as black locust trees, Johnsongrass, white clover, maple trees, locoweed, tansy ragwort and black walnut trees. Fescue grass can be toxic to broodmares and their foals, causing thickened placentas and even abortions. Look to this University of Minnesota poster for pictures of poisonous plants and to better understand signs of toxicity.

Know these common toxicity symptoms:

- Change in behavior
- Anxiety
- Depression
- Neurologic issues
- Seizure
- Abnormal gait
- Tremors
- Stocking up or founder
- Elevated heart rate
- Brown or discolored urine
- Mouth blisters
- Colic

If horse owners fear their horse might have ingested a poisonous plant, "Call a veterinarian immediately," Dr. Hiney said. "If horses do not receive the right care, toxicity can be a big deal. Death is often a real possibility."

As the weather affects forage available to horses in turnout situations (especially with summer drought or winter conditions), horses are



more inclined to ingest unfamiliar plants or leaves. To help prevent plant toxicity, make sure horses have adequate rations of quality hay or grass in front of them. Dr. Hiney encourages horse owners to work closely with their county extension agent to identify potentially harmful grasses, plants or trees that may surface in their pastures. Horse owners can also invest in a spray system to eliminate unwanted plants and weeds.

"Anytime there is something novel in their pasture, horses are going to investigate it," Hiney warned. "I thought everything in my pasture was safe, but it turns out I was wrong. Be very careful, and take a look at what now is accessible to the horses, because they will take advantage."



**AMERICAN HORSE COUNCIL
QUARTERLY WEBINAR**

URBAN RIDING PROGRAMS

With invited guests:


SELINA BROWN
STAND Foundation


RON MACK
Legacy Equine Academy


LEZLIE HINER
Work to Ride


DAVID SILVER
Detroit Horsepower


WILLIAM LEWIS
Urban Horse Center

The webinar will also feature Mikhail Proctor, USEF Community Outreach Program Director, and Ambreen Tariq, Director of Together Outdoors with Outdoor Recreation Roundtable. Both will speak about the grants and resources available to equestrian programs.

MONDAY, AUGUST 19, 2024 @ 1:00PM EST  **LIVE**

RSVP by August 16th at 5:00 PM ET at <https://bit.ly/AHCWebinarAugust2024>

The American Horse Council is pleased to announce a panel of outstanding guests for its 3rd quarter 2024 webinar on "Urban Riding Programs" on Monday, August 19, 2024, at 1:00 PM ET.

AHC President Julie Broadway stated "We believe each of these programs has great stories to share, and each provides unique programs and offerings that our

audience would find of interest. We also know their work has enriched and positively impacted lots of young people, and that's something to celebrate—and for our audience to learn more about and how to support these programs.” Invited panelists will include:

Selina Brown with the Washington DC based STAND Foundation.
William Lewis with the Baltimore MD based Urban Horse Center.
Lezlie Hiner with the Philadelphia PA based Work to Ride.
David Silver with the Detroit MI based Detroit Horsepower.
Ron Mack with the Lexington KY based Legacy Equine Academy.

The webinar will also feature Mikhail Proctor, USEF Community Outreach Program Director, and

Ambreen Tariq, Director Together Outdoors with Outdoor Recreation Roundtable. Both will speak about the grants and resources available to equestrian programs.

RSVP by August 16th at 5:00 PM ET at <https://bit.ly/AHCWebinarAugust2024> to receive the Zoom link for this webinar.

[REGISTER HERE](#)

aaephorsedocs





Sponsored by





Good works are acts of giving back to the horse, for the love of the horse and the people they touch.

Nominate a deserving horse doctor through August 2024.



SCAN ME

Don't forget to nominate any outstanding horse doctors you know who go above and beyond to volunteer their time and skills to help horses in need.

This summer, the AAEP is honoring its members who embody a spirit of service to the horse through the 2024 Good Works for Horses Campaign, sponsored by Zoetis!

During the months of July and August, three AAEP-member veterinarians will be selected for recognition in a Win, Place and Show order. A grand prize winner will be honored during the 2024 AAEP Convention in Orlando, FL, Dec. 7-11.

To nominate an outstanding and selflessly serving veterinarian through Aug. 31, visit: <https://aaep.org/good-works-for-horses/>

the HORSE

What to expect when a veterinarian performs a prepurchase exam on a prospective equine partner.

Scheduling an Exam

Avoid potential conflicts of interest when choosing a veterinarian to perform your prepurchase exam.

The Pass/Fail Myth

"Passing a horse for one buyer is not passing for another," says Roemer. "It depends on what the horse is to be doing and what the buyer is willing to tolerate as far as preexisting or potential issues."

Buyer Considerations

Every client has different levels of disposable income, experience maintaining or treating conditions, and levels of risk they're willing to take when buying a horse.

Look at the Whole Horse

"When it comes to prepurchase exams, I am going through a horse from nose to tail. This includes evaluating parts of the respiratory system, gastrointestinal system, neurologic system, eyes, ears, skin, muscles, joints, etc. The list can be quite long."

Assessing the Athlete

Radiographs and ultrasound are great diagnostic tools that can tell us a lot about a horse. While it would be wonderful to image every horse getting a prepurchase, this is not financially feasible for many prospective buyers.

To read the full article, visit ***the Horse*** in the link below

[Read Full Article Here](#)



**Experience the
Exmark difference!**



Your horses can save you money on a new Exmark mower!





UNBRANDED-UNCHANGED

by Del Shields Cowboy Music and Poetry

*Much has been written of the cowboy.
Some true, some false and some exaggerated to fit the page of the
writer. One thing is for sure. He made his mark in history and has never
been forgotten, blotted or overlooked.*

From his earliest work as literally boys, who were assigned to watching



herds of cattle graze on open fields, to wild roundups and drives of maverick range stock, that was collected and grouped up by livestock managers and sold to buyers in norther states, his title has been true.

Kansas was a crucial part of the development of this industry as places like Abilene and Ellsworth offered railroad connections to ship beef back east.

The "Cowboy" or "Cow Hand" was viewed in various ways by varying authors over the years. Some wrote of him as a ruthless, uneducated, lawless nomad with no morals or ethics. While there might have been that rare encounter of men of low degree, most saw the cut of men as the most noble in integrity and loyalty to their employer and their way of life.

These individuals were guided by a code of respect, which they lived by and by which some died trying to defend what to them was valuable and right. While it's true then and now, most cowboys are men/women who have a need to live with life liberties that exclude them from ridged routine and are much more at home punching cattle rather than time clocks. This however has never meant an easy way of living, and in most cases, cowboys work longer hours than many other professions. In today's modern processes, things are much different for most cowboys. Cattle are confined to rangelands that are either fenced or protected by dictated areas of travel. They are now trucked from feed yards to processing plants and sold on televised auction markets. Cowboys are sometimes more horsemen than cattlemen in today's world, but nonetheless, his heart holds true to form. Every year now on the third Saturday of July, an annual celebration takes place in the U.S. deemed the "National Day of the Cowboy".

His heritage and legacy lives on and the tradition he has set is as strong as ever. Cowboy hats and boots are worn by people who have never or hardly ever seen a cow or know the difference between a steer and a bull. But they romance the American west. To the cowboy he sees himself as nothing special. He just lives what he loves and doesn't want to get too deeply involved into the world around him. He honors those of the past and wishes he had lived in an earlier time when the west was wild and there were no fences and gates to direct his course. reality is more harsh for some than others. Progress isn't always improvement.

Adaptation is sometimes uncomfortable and daunting for those who see themselves in a different way of living. When you hear musicians declaring "long live cowboys" you can bet his path has been paved. He'll still be found riding fences on some out of the way but not forgotten rangeland. An old, battered guitar might be found leaning up against a living room wall. His favorite felt hat will be stained with sweat and dust and soaked full of memories of a hundred brandings and a thousand sunsets. You might see his trappings cased in some western themed museum, but don't feel too remorseful over these relics. Out there, beyond the skylines and interstates, the real ones, the true ones, are still riding free.

He's the one who is unbranded and unchanged. Take him or leave him. He doesn't care. But in a time of crisis, he's the one you'll want on your side. My heroes have always been cowboys and I'm sure they always will be.



Best of America by Horseback

Our mission is to promote equine tourism and riding destinations, while providing an entertaining and informative viewing experience for our audience.

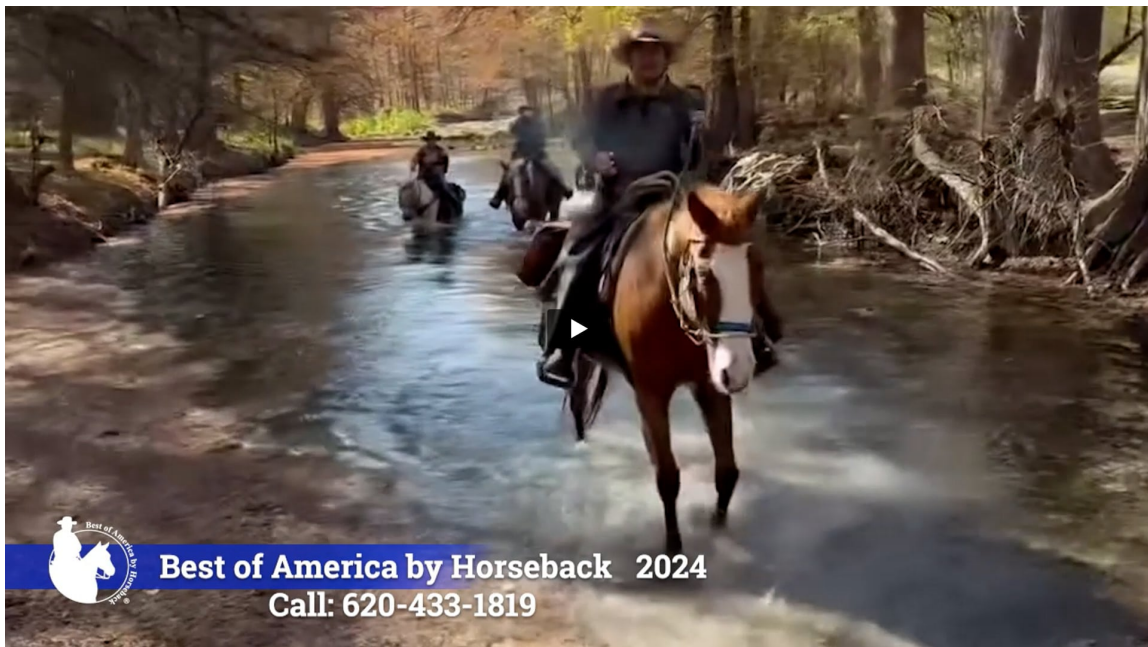
Tune in to RFD-TV & The Cowboy Channel to catch our latest episodes and discover your next adventure on horseback!

From the mountains of Montana to the beaches of Florida, we'll take you on a journey to experience the best horseback riding that America has to offer.

Join us for the 20th Anniversary Ride in Black, Missouri

September 20-22
Brushy Creek Lodge and Resort, Black, Missouri

For more information or to
make a ride reservation,
please call:
620-433-1819



Best of America by Horseback 2024
Call: 620-433-1819



THE GOLDEN HISTORIC HORSE RACING FACILITY



What is historical horse racing?

- It's a way of gambling. You bet on horse races that have happened already.
- They are like slot machines. They have spinning pictures, and it sounds like a slot machine.
- You will get information about the horses and jockey before placing your bet.
- The player chooses the order of horses, or you can choose to have the machine choose for you.
- The new facility will be called the Golden Circle Historic Horse Racing Facility.

About the facility:

- It is going into the old Greyhound Park in Park City that closed in 2007.
- It's 3 stories tall.
- Phil Ruffin is behind the project that will cost roughly \$100 million dollars.
- There are 80 acres of land for the new project.

COMING TO WICHITA IN SEPTEMBER 2025

AUGUST Inspiration



“Horses change lives. They give our young people confidence and self-esteem. They provide peace and tranquility to troubled souls. They give us hope!”

— Toni Robinson

5 Tips For Equestrian Camps

1



Clean up ALL manure

READ THE RULES: Place all manure in it's appropriate place before departing. Manure Bunker, pack it out or spread it. (but avoid throwing at base of trees) **READ the RULES.**

2



Hay! Clean it up!

Old hay holds moisture and can leave a moldy mess for the next equine, which is very unhealthy.

3



Leave Nothing Behind

Twine or hooks use to fasten buckets, gates, or haybags should be removed. These can be hazards for Equines

4



Bedding is a NO NO!

Your trail groups work very hard to place sand in the corrals for your equines comfort. Shavings mix in and prevent the natural drying of sand.

If corrals are prepared with limestone or gravel, and bedding is needed, then be sure LARGE flake shavings are used and **COMPLETELY CLEANED UP.**

5



Pitch In

Watch for WorkBees happening at your favorite Equestrian Trails and Camps, Follow them on social media, invite your riding friends and lend a hand. **Volunteers are ALWAYS needed and so appreciated.**

Michigan Horse Trails Directory

**Good things to remember when visiting any equine
camping facility, anywhere!
Please respect spaces, wherever you may visit!**



Kansas Horse Council Membership **Benefit Alert!**

Equine Discounts provides exclusive discounts on nationally known products for everyone in the horse world. We are currently partnered with John Deere, Big Ass Fans, Sherwin Williams, ODP Business Solutions, and Farmers Insurance. We offer equine members steep discounts on everything from paint, fans, and office supplies to farm equipment such as tractors, mowers, hay equipment and Gators™!

Anyone with a paid membership to any equine association (such as Kansas Horse Council) qualifies for Equine Discounts.

A percentage of every sale through Equine Discounts is returned to the Equine Industry!

Call 866-678-4289 to start saving today!



JOHN DEERE



BIG ASS FANS



FARMERS
INSURANCE



Equine National Plan

The United States (US) horse industry involves activities in all regions of the country and the world. Horses are considered livestock and are unique in the livestock sector because of their broad diversity.

The equine industry involves business, working animals, sport, recreation,

entertainment, gaming, and environmental support, all built on the agri-business of breeding and raising equine.

In addition to economic benefits, it also produces other intangible benefits to people and the US, including recreation, exercise, working animals, stress reduction, and entertainment.

The overall goals of the NEHP are as follows:

- Protect the health and welfare of horses in the US and North America;
- Facilitate the continued interstate and international movement of equine and associated products with science-based requirements and standards;
- Protect the business continuity and economic viability of the equine industry;
- Establish the role of the industry, federal and state authorities, and tribal governments in equine disease prevention and control and in natural disasters; ensure the availability of current diagnostic testing, inspection, and certification services; create and maintain a communication system which provides timely and rapid dispersal of accurate information about disease outbreaks;
- Provide guidelines for control, identification, and containment of equine diseases;
- Support and make available educational programs for horse owners and industry representatives on disease identification and prevention.

Click on the link below for further details

[National Equine Health Plan](#)



Know a horse owner in need of assistance? Find support services and safety net programs today.

**UNITED HORSE COALITION
EQUINE RESOURCE
DATABASE**

WWW.UNITEDHORSECOALITION.ORG





What are the signs of gastric discomfort in horses?

Poor coat condition

Teeth grinding (bruxism)

Changes in behavior, including aggression, nervous behaviors, side biting and "girthiness"

Acute or recurring colic

Poor performance

Poor appetite

Picky eating

Poor body condition

Weight loss

Chronic diarrhea



DID YOU KNOW...It's **FREE** to Access the Horse Trails of America Map

THE map is **free to access**, but we do ask that all sign in and make an account so that we can keep our community safe. Here's where to make your membership (or take advantage of the six-month free trial for the Trail & Travel Membership): <https://www.horsetrailsofamerica.com/start-membership>. Or if it's easier to remember, HTA.horse will take you to the same spot.

Watch the Video

Want more help? Here's a how-to video to walk you through all the features and what to do. Watch the YouTube channel—and be sure to hit subscribe and like once you're there: <https://www.youtube.com/watch?v=2rQm8Lnd3ko>

The map is up to 1400 locations. If you're looking for a layover or have one to add please make <http://HTA.horse> your first resource. You can review what's up already and post more! We would love to have you post fairgrounds too!



A map of the United States with various colored circles (green, yellow, orange, purple) and icons (hiker, airplane, suitcase) placed across different states. The circles contain numbers: 7, 8, 18, 2, 6, 23, 4, 5, 14, 5, 3, 4, 61. The icons include a hiker in Wisconsin and Michigan, an airplane in Michigan, and a suitcase in Florida. State names visible include MINNESOTA, WISCONSIN, MICHIGAN, NEW YORK, MASSACHUSETTS, IOWA, MISSOURI, ILLINOIS, INDIANA, VIRGINIA, NORTH CAROLINA, ALABAMA, GEORGIA, LOUISIANA, and FLORIDA.

**MAKE US YOUR
LAYOVER RESOURCE!
1400 LOCATIONS AT:
HTA.HORSE**

AQHA
PRO
HORSEMEN
ACADEMY
PRESENTED BY  **Boehringer**
Ingelheim

JANUARY
14-16, 2025
SOUTHPOINT HOTEL & CASINO • LAS VEGAS

REGISTER
NOW



Boehringer + AQHA Professional
Horsemen Academy Register Here



Psychotherapy sessions incorporating horses can enhance traditional therapy programs and services.

Through interactions with horses, clients engage in building trust and forming profound connections that extend beyond words.

Guided by professional facilitators, relationships with horses help clients calm their nervous systems, safely confront fears, and embody positive experiences.

This therapeutic partnership enriches both horses and humans.



HERE FOR
HORSES

www.hereforhorses.org



**KHC Horsemanship
Rewards Program
Announcement!**

It's not too late to enroll for 2024.
Have you renewed for 2024?
For those currently enrolled, don't forget to submit your
HRP logged hours!

HRP SIGN UP



Kansas Back Country Horsemen of America

Did you know 2024 is BCHKS' 10-year anniversary?
Want to know more about Back Country Horsemen- Kansas?

Like and Follow on Facebook:

[\(20+\) Back Country Horsemen of America Kansas Chapter | Facebook](#)

Many fall trail rides offer opportunities to support trails and trail improvement projects.



Summer Corn Chowder

[Corn Chowder Recipe {the Best!} - Cooking Classy](#)

Ingredients

- 8 ears fresh sweet yellow corn, husked and silks removed, and kernels cut from cob
- 3 Tbsp butter
- 5 slices bacon, cut into 1/4 to 1/2-inch pieces (see note*)
- 1 medium yellow onion chopped (1 1/2 cups)
- 1/4 cup all-purpose flour
- 1 clove garlic, minced
- 5 cups water or low-sodium chicken broth
- 1 lb Yukon Gold potatoes, cut into 1/2-inch pieces
- 1/2 tsp dried thyme
- 1 bay leaf
- Salt and freshly ground black pepper
- 1 cup half and half
- 1 Tbsp honey
- 2 - 3 Tbsp chopped fresh chives
- Shredded cheddar cheese, for serving
-

Directions

- Melt butter in a large pot over medium heat. Add the onion and bacon and cook, stirring frequently, until onion has softened and just starting to brown around edges, about 8 - 10 minutes.
- Add in the flour and garlic and cook 1 1/2 minutes. While whisking, slowly pour in 5 cups water or broth.
- Bring mixture to a boil, stirring constantly, then stir in corn kernels and potatoes. Add in thyme and bay leaf and season with salt and pepper to taste.
- Bring to a light boil, then reduce heat to medium-low and allow to simmer, stirring occasionally, until potatoes are tender, about 20 minutes.
- Remove bay leave then transfer 2 1/2 cups of the chowder to a blender and blend until smooth.
- Stir the mixture back into the pot then stir in half and half and honey. Sprinkle each serving with chives and optional cheddar.

Kansas Horse Council Specialty License Plate

- Kansas Horse Council license plates are available at your local County Treasurer's office.
- You don't have to be a member to sport one, on your car, truck or trailer!
- Show your love of horses with this colorful statement plate!

KHC License Plate Info



ENJOY THE RIDE WITH KHC!!

GET A KANSAS HORSE COUNCIL TAG
PROUDLY SHOW YOUR SUPPORT FOR KHC AND THE WORK IT DOES.

KANSAS HORSE COUNCIL PLATES
are available to anyone who owns or leases an automobile, RV, truck or trailer with a gross weight of 20,000 pounds or less.

WHAT YOUR TAX DEDUCTION SUPPORTS

- RECREATIONAL AND TRAIL MAINTENANCE
- EQUINE HEALTH AND WELFARE
- EDUCATION PROGRAMS
- YOUTH ACTIVITIES AND SCHOLARSHIPS

HOW TO GET YOURS:
TROT over to your County Treasurers Office
FILL OUT a Kansas Royalty Tag form
PAY a one time production charge of \$50.00 plus title fees, registration fees, personal property tax and a \$30 donation to the Kansas Horse Council.
The \$30 tax deductible donation will appear on your paperwork every year when you renew. If the vehicle is currently tagged, the original plate must be returned and the current owner's registration and proof of insurance will need to be provided.

Kansas Horse Council
www.kansashorsecouncil.com



BACK COUNTRY HORSEMEN OF KANSAS

What's the best way to stay informed of BCHKansas news and activities?

Follow Facebook.

There are several Facebook pages set up to keep BCHKansas members and all equestrians up-to-date on activities on several of our public trails. Here's a list:

Back Country Horsemen of America Kansas Chapter
Sunflower Chapter of Back Country Horsemen of Kansas
Saddle Ridge Chapter of Back Country Horsemen of Kansas
Tuttle Creek Chapter of Back Country Horsemen of Kansas
Saddle Ridge Chapter
Big Hill Lake Riders
Friends of Randolph State Park
Friends of Rockhaven Park
Let's Ride—Perry Lake
Kanza Rail Trails Conservancy

Receive notifications of workdays or see reports on trails-maintenance or campground improvements. Join in on workdays whenever possible!

Follow the www.bchkansas.com website.

Encourage a new member to join BCHKS and be entered into an end-of-year drawing.

BCHKS 2023 Volunteer Hours Summary

Across Kansas, BCHKS volunteers are assisting in the maintenance of trails on public lands. We do make a difference! Equestrian volunteer work hours on Kansas public lands in 2023 are as follows:

(Formulas provided by BCHA and determined by The Independent Sector.)



| Backcountry Horsemen of America - Kansas Volunteer Hours Report January - December 2023 | | | |
|---|--------------|---------------------------|------------------|
| | Totals | Rate per hour/mile/day | Total Value |
| Total Basic Hours | 539 | \$29.95 | \$16,143 |
| Total Skilled Hours | 1398 | \$44.93 | \$62,812 |
| Non-Trail Hours | 1076 | \$29.95 | \$32,226 |
| Travel Time | 201 | \$29.95 | \$6,020 |
| Total Hours | 3214 | | \$117,201 |
| Personal and Stock Use | 11738 | \$1.00 | |
| Total Travel Miles | 11738 | | \$11,738 |
| Power Equipment | 730 | \$30.00 | \$21,900 |
| Heavy Equipment | 165 | \$110.00 | \$18,150 |
| Total Equipment Hours | 895 | | \$40,050 |
| Total Stock Days | 152 | \$100.00 | \$15,200 |
| Total Donations | \$11,466 | | \$11,466 |
| | Total | | \$195,655 |

Keeping Kansas Trails Open for Future Generations!

2023 Trail & Campground Improvements

Join both BCHKS and Kansas Horse Council at discounted rate with one payment.
www.kansashorsecouncil.com

Big Hill Lake BCHKS:

~ New water hydrant at Timber Hill Trailhead funded by endurance ride donation

Chisholm Trail BCHKS:

~ Planned & hosted 6 Fill-the-Campground events (donation of manure cart to each)
~ BCHA \$500 grant funded safety vests, eye/ear protection, hand tools, chainsaw

Clinton Lake (Sunflower BCHKS):

~ Benefit ride raised \$850 for ongoing trail maintenance projects

Eisenhower State Park, Melvern Lake (Sunflower BCHKS):

~ Several new cross trails added to trail system
~ Benefit ride funds used to build round pen at West Point Equestrian Campground
~ Benefit ride raised \$5,480 for campground/trail improvements
~ Hosted *Best of America by Horseback* in September

Hillsdale State Park (Saddle Ridge BCHKS):

~ Hosted *Best of America by Horseback* in September
~ Installation of new bathroom near shelter house by park management
~ All campsites now have pen
~ Extensive clearing and widening of trails
~ Fundraiser event raised \$3,000 for trail/campground improvements

Kanopolis State Park:

~ Benefit rides raised \$1,450 for trail/campground improvements

Perry State Park (Sunflower BCHKS):

~ Benefit ride raised \$5,890 for campground/trails
~ Benefit funds used to rebuild tractor used for mowing trails
~ Water and electric lines updated by State Park management
~ Work began on site for new arena

Randolph State Park (Tuttle Creek BCHKS):

~ Benefit ride raised \$1,200 for campground/trail improvements
~ BCHKS grant funded purchase of two manure carts for campground

Since 2014, equestrian volunteers have donated 29,538 hours toward the preservation and maintenance of trails on Kansas public lands with a value of \$1,902,543!

BCHKS, celebrating 10 years in 2024!!

bchks.com or bcha.org

On Facebook - Back Country Horsemen of America Kansas Chapter

**In 2023, BCHKS
volunteers
contributed
3,214 hours of
work on public
trails. This
equates to
\$195,655!**

Joint membership with KHC & BCH-KS for you!



Kansas Chapter



JOINT MEMBERSHIP AVAILABLE IN BOTH ORGANIZATIONS!

Individual: \$80 (\$15 to BCHA/\$15 to BCH-KS/\$15 to KS Chapter of Choice/\$20 for insurance/\$15 to KHC)
Family: \$100 (\$15 to BCHA/\$15 to BCH-KS/\$15 to KS Chapter of Choice/\$40 for insurance/\$15 to KHC)

Trails Advocate Level Individual: \$80

Trails Advocate Level Family: \$100

One enrollment to support two organizations!
Simple and makes sense!



Hunt Seat



Western



Dressage



INTERSCHOLASTIC
EQUESTRIAN
ASSOCIATION

INCLUSIVE. EQUITABLE. AFFORDABLE.

WHAT IS IEA?

IEA is a non-profit organization offering a unique draw-based/catch-ride team competition, whereby riders are **not required to own their own horse or riding tack** to participate - thus providing greater access to the sport.

WHO CAN PARTICIPATE?

- Riders of all experience levels in Grades 4-12
- Amateur Riders age 21 & older
- Coaches 21 & older
- Adult Contributing Members (non-riding)
- Junior Education Members (non-riding)
- Middle & High School Teams

WHAT ARE THE BENEFITS?

- \$1.5 M in Cash & Collegiate Scholarships EACH year
- National Youth Board and Leadership Opportunities
- Financial Aid and Grant Assistance
- Local, Regional, Zone, & National Competitions
- National Online Horsemanship Knowledge Program
- Access to Clinics, College Recruitment Events, Mentorships, Volunteer Opportunities, & Contests

RideIEA.org info@RideIEA.org

Attention Kansas lesson barns, you too could become an (IEA) Interscholastic Equestrian Association facility and partake in shows & awards! Checkout their Facebook page and website, www.rideiea.org

CHECK IT OUT

Kansas Horse Council Rewards Programs



DILLONS COMMUNITY REWARDS PROGRAM:

- When you shop at Dillons and use your Rewards card, KHC will earn a percentage rebate based on your Dillon's purchases!

To link & register your rewards card click here: **Dillons Rewards Link** and log into your existing account. Search for Kansas Horse Council or enter our NPO number, KS920 and click Enroll. New users will need to create an account which requires some basic information, a valid email address and a *Rewards Card. *You must have a registered Dillons Food Stores rewards card account to link the Community Rewards program to Kansas Horse Council. (Cards are available for FREE at any Dillon's customer service desk.) SHOP: Purchases will not count towards rebates for KHC until you register your rewards card and link to Kansas Horse Council here: **DILLONS REWARDS LINK** Registered Rewards Cards must be swiped at checkout or use your phone number registered with your Rewards Card when shopping for purchases to count. This program does not affect your Fuel Points balance. Points will still accumulate for your personal use. Rebate program is based on purchases at Dillon's stores payable to Kansas Horse Council as a Non-Profit Organization. Thank you for your continued support to the voice of equine enthusiasts in Kansas!



Earn Horsemanship points for the quality time you spend with horses, mules, donkeys, ponies and minis!

Registered or Grade, owner or non-owner, or as a volunteer, we want to recognize your participation in Equine Activities!

(“Activities” do not include feeding, stall cleaning and general maintenance.)

Examples include groundwork, grooming, trail, recreational riding, schooling, lessons, competing, driving, training, exercising and other horse care.

Earn points by volunteering at a therapeutic riding program or an equine rescue.

\$35 for first time enrollment & \$15 each renewal year to rollover your cumulative hours. Enroll now!

[SIGN UP FOR HRP HERE](#)

IT'S TIME
TO JOIN UP



EARN
REWARDS

WANTED



ALL EQUINE LOVERS

THE



PRESENTS



HORSEMANSHIP REWARDS PROGRAM

Earn rewards while working with your favorite equine friends!

This program is open to anyone who enjoys working with horses, minis, donkeys, ponies, or mules, including "grade" equines.



This program recognizes participation in Equine Activities such as riding, schooling, competing, showing, training, ground work, driving, exercising, and assisting in a Therapy Program or Rescue. The program does not include feeding, stall cleaning and maintenance.

Awards are given at 25, 50, 100, 250, 500, 1000, 1500 & 2000 hour milestones.
Upon 2000 hours completed, members are welcome to re-enroll and start again!

PROGRAM RULES & REQUIREMENTS:

- Must be a current KHC Member.
- Must pay a \$35.00 initial program enrollment fee the first year and then a \$15.00 annual program fee thereafter.
- May ride or handle more than one horse and it is not necessary to be the owner of the horse.
- Hourly log sheets may be submitted monthly, quarterly or annually. Annual submissions must be postmarked no later than December 31st.
- The KHC Member participant will need an Individual membership to track member rewards by name.
- Rewards points are not retroactive. Date of log begins on enrollment date.
- Rewards are subject to change based on availability.

FOR MORE INFORMATION CONTACT:



KANSAS HORSE COUNCIL, 8831 QUAIL LANE, SUITE 201, MANHATTAN, KS 66502
www.kansashorsecouncil.com | 785-776-0662 | Fax 785-539-2928 | director@kansashorsecouncil.com





EQUINE DISCOUNTS

A percentage of every sale is

returned to the equine industry!



As a member of KHC, you are eligible for these discounts.



JOHN DEERE

John Deere offers substantial discounts on everything from mowers and tractors to Gator™ Utility Vehicles, hay and construction equipment.

- The MSRP Program: up to 28% off
- The Cash Bonus Program: up to \$2,700 off
- Construction Equipment: up to 26% off



BIG ASS FANS

BAF is committed to Energy Efficient Air movement and providing comfort to the equine industry. Equine members will receive up to a 25% discount on qualifying purchases for all Equine Facilities and Personal Residences.



By establishing a Sherwin-Williams account, members are eligible for these great benefits:

- 35% off paints at list price
- 30% off brushes, rollers and associated products at list price



ODP Business Solutions™ (formerly Office Depot) and Equine Discounts have partnered to provide exclusive benefits and savings on a wide selection of office products and services.



@myequinediscounts



@myequinediscounts

Call 866-982-6872 to start saving!
EquineDiscounts.com



Learn About Kansas Horse Trails! RIDE Kansas!

Saddle Up and RIDE Kansas! Visit our Kansas Department of Wildlife and U.S. Corps. of Engineers equestrian facilities. Visiting and riding or camping shows support of our parks, and keeps them open for future use and possible funding of improvements. Always leave only hoofprints behind. Share our multi-use trails. Call before you haul if in doubt before your visit.



Do you have your copy
of our Equestrian Trails
in Kansas?

Copies are provided
FREE at all Kansas
Horse Council events, or
\$3 for s/h and we'll mail
you one.

These guides are also
available at all KDWP
offices.

**Trail info is also
available
online here:**

Public Trails in Kansas



Kansas Horse Council | 8831 Quail Lane Suite 201 | Manhattan, KS 66502 US

[Unsubscribe](#) | [Update Profile](#) | [Constant Contact Data Notice](#)



Try email marketing for free today!