

Clarinet Fingering Chart

Low E to Clarion High C

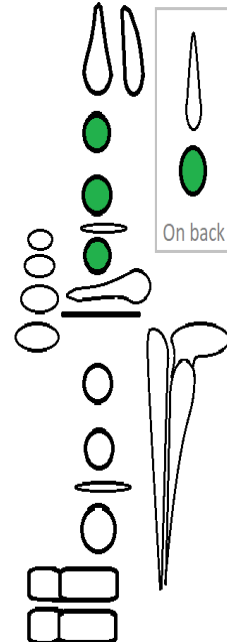
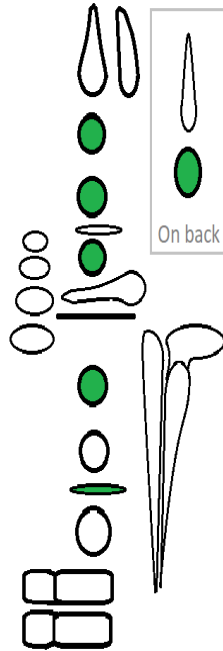
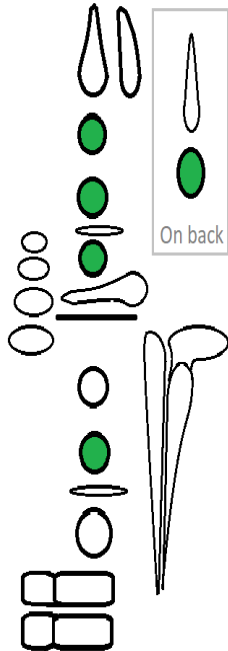
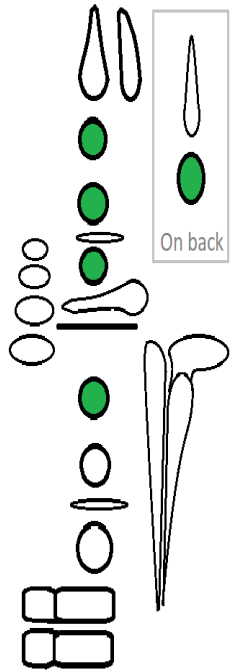
Low E Low F Low F#

This section shows the fingering for the notes Low E, Low F, and Low F#. Each note is represented by a musical staff with a treble clef and a whole note. Below each staff are two diagrams of the clarinet fingerings. The diagrams use green circles to indicate which keys are pressed. For Low E, the keys pressed are the left thumb, left index, left middle, left ring, left pinky, and the right index. For Low F, the keys pressed are the left thumb, left index, left middle, left ring, left pinky, and the right index and right middle. For Low F#, the keys pressed are the left thumb, left index, left middle, left ring, left pinky, and the right index, right middle, and right ring. Each diagram also includes a small inset labeled 'On back' showing the fingering for the back of the hand.

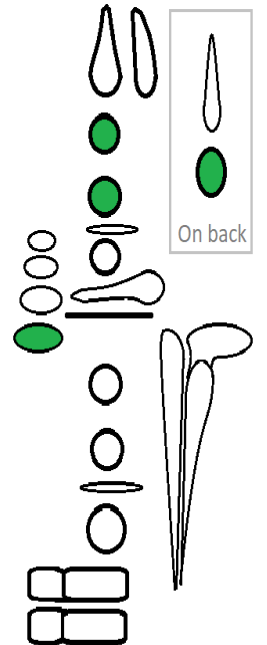
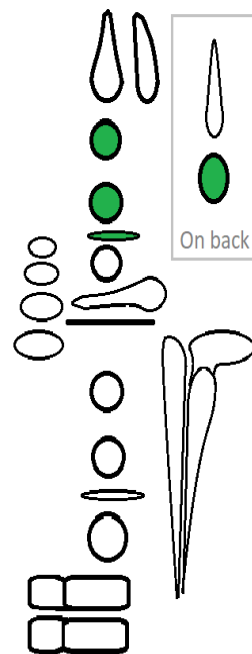
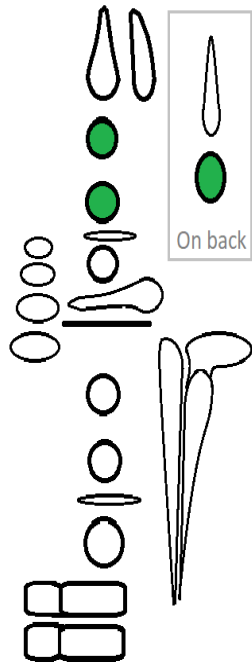
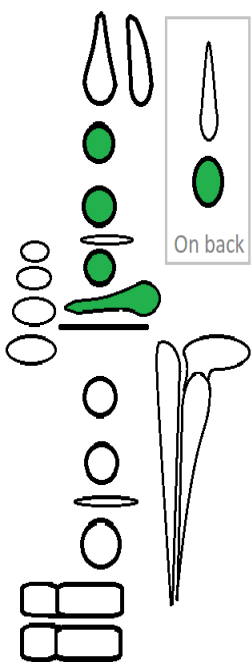
Low G Low Ab Low A

This section shows the fingering for the notes Low G, Low Ab, and Low A. Each note is represented by a musical staff with a treble clef and a whole note. Below each staff are two diagrams of the clarinet fingerings. The diagrams use green circles to indicate which keys are pressed. For Low G, the keys pressed are the left thumb, left index, left middle, left ring, left pinky, and the right index and right middle. For Low Ab, the keys pressed are the left thumb, left index, left middle, left ring, left pinky, and the right index, right middle, and right ring. For Low A, the keys pressed are the left thumb, left index, left middle, left ring, left pinky, and the right index, right middle, and right ring. Each diagram also includes a small inset labeled 'On back' showing the fingering for the back of the hand.

Low Bb Low B-natural Low C



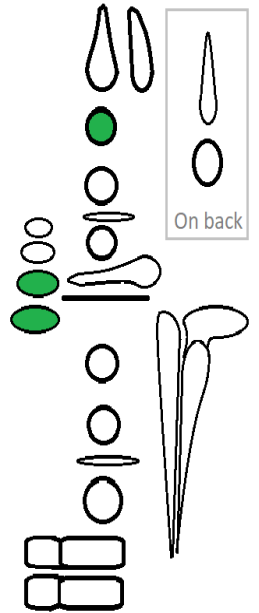
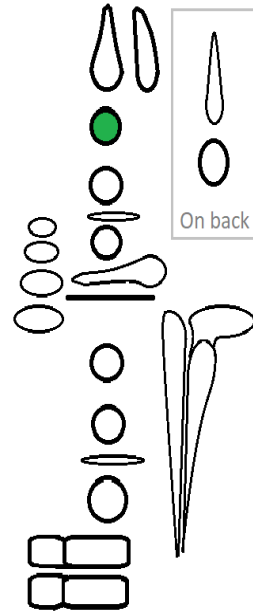
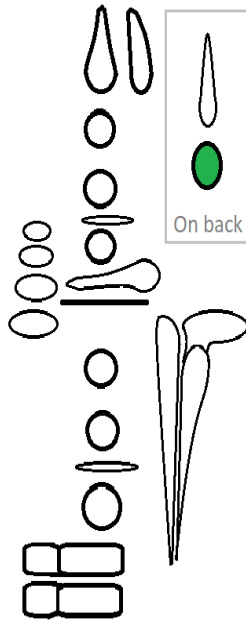
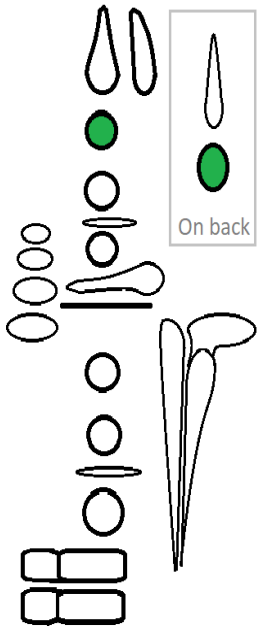
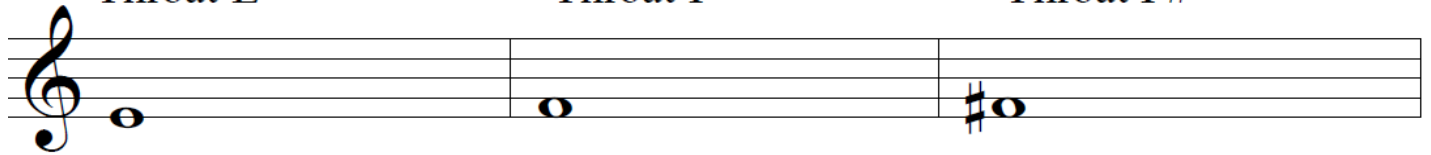
Low Db Low D Eb (side or cross key)



Throat E

Throat F

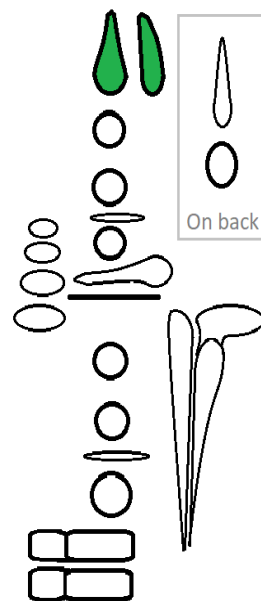
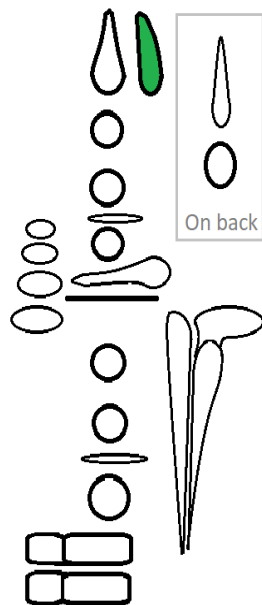
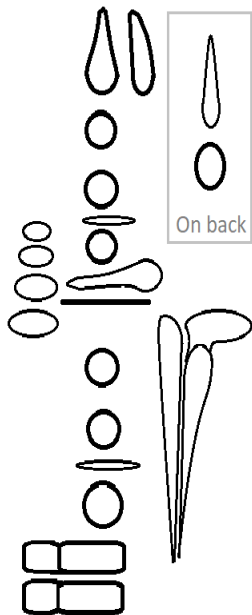
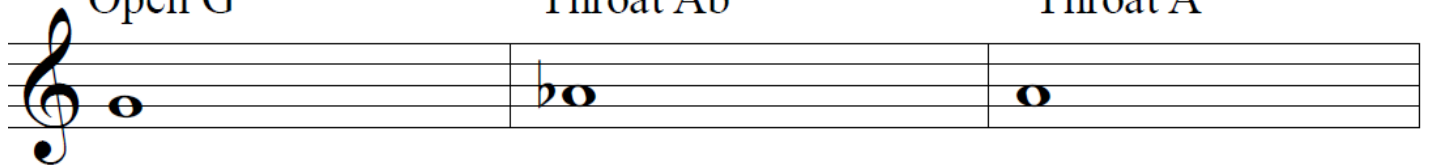
Throat F#



Open G

Throat Ab

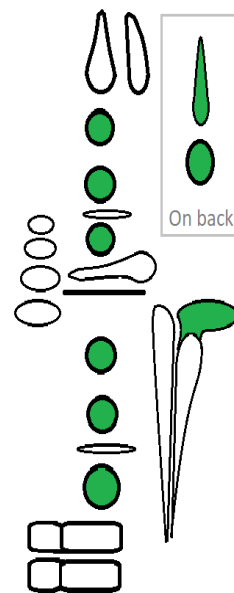
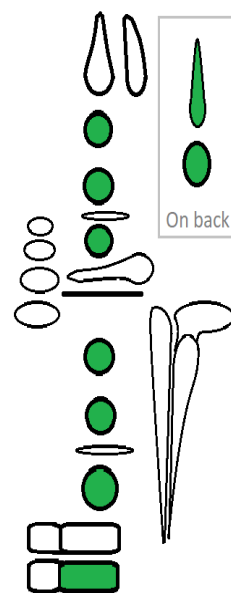
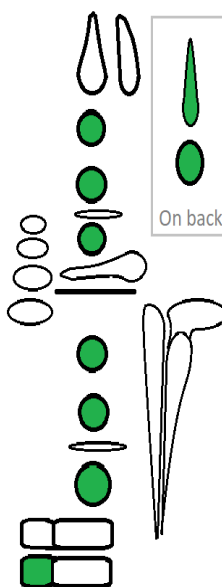
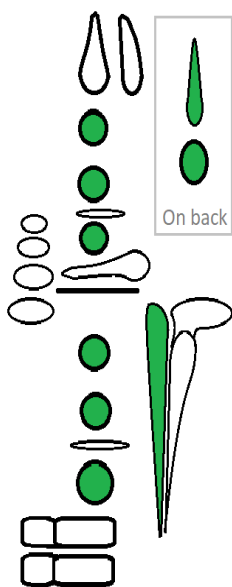
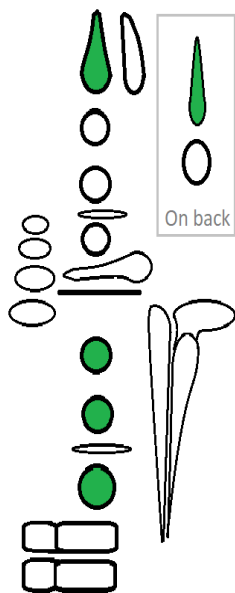
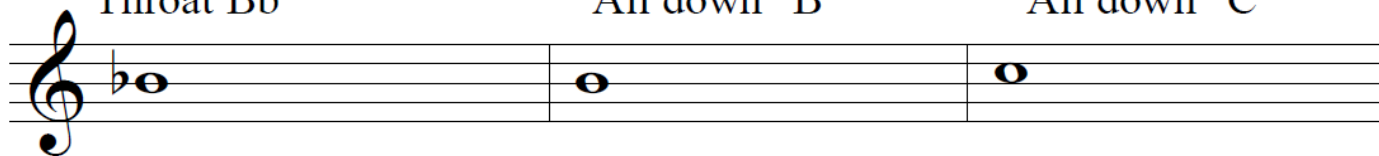
Throat A



Throat Bb

"All down" B

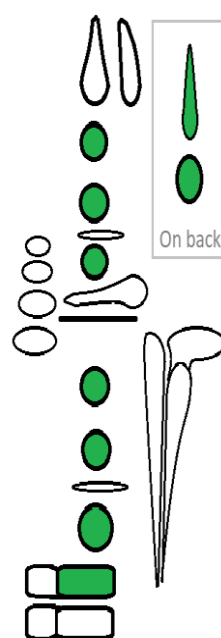
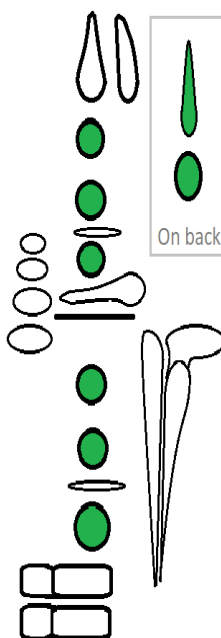
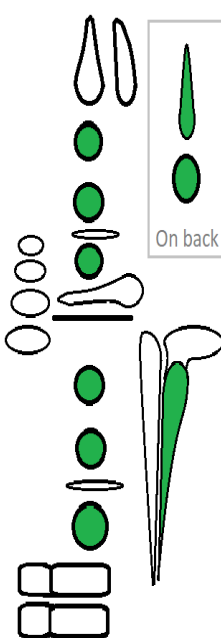
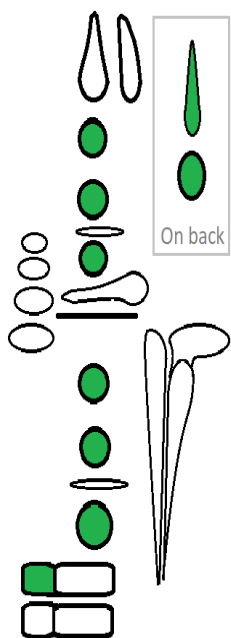
"All down" C



Clarion Db

Clarion D

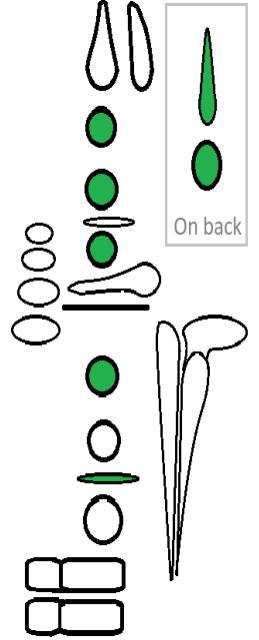
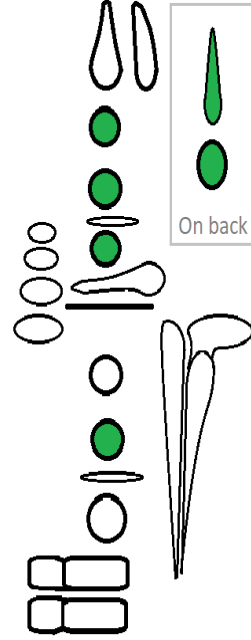
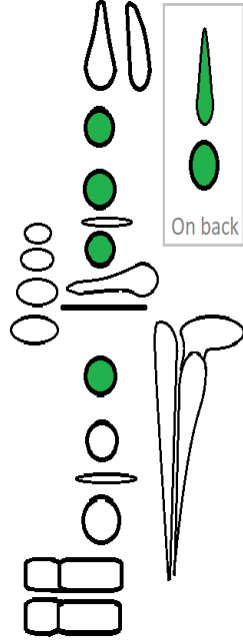
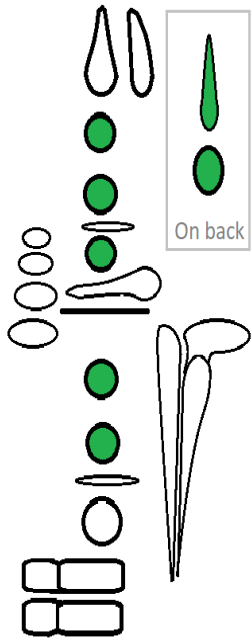
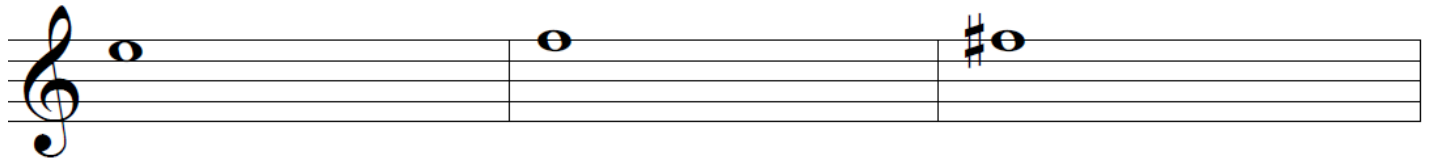
Clarion Eb



Clarion E

Clarion F

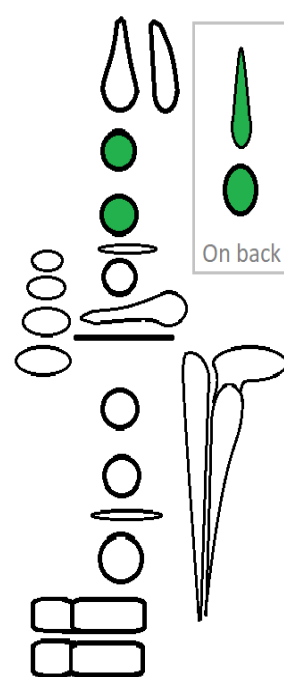
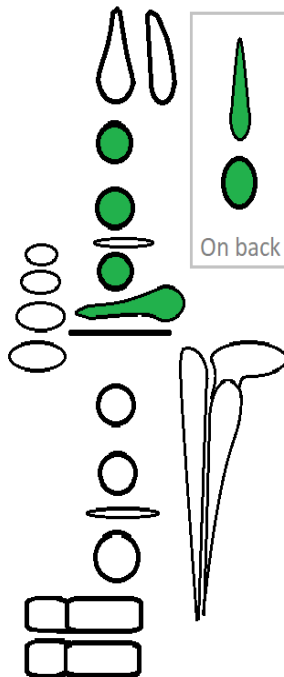
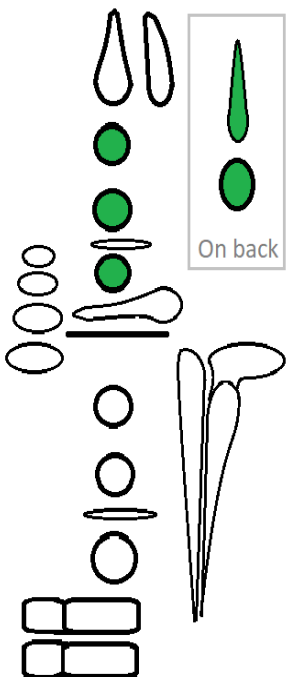
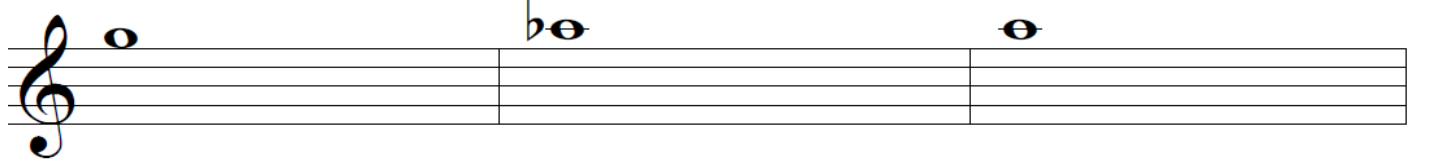
Clarion F#



Clarion G

Clarion Ab

Clarion A



Clarion Bb (or high Bb)

Clarion B (or high B)

High C

